



1. St. Charles College
2. Catonsville, Maryland
3. John C. Murphy
4. March 3, 1983
5. Maryland Historical Trust, Annapolis, Md.
6. View - to North

1/50



1. St. Charles College
2. Catonsville, Maryland
3. John C. Murphy
4. March 3, 1983
5. Maryland Historical Trust, Annapolis, Md.
6. View - to North

2/50



1. St. Charles College
2. Catonsville, Maryland
3. John C. Murphy
4. March 3, 1983
5. Maryland Historical Trust, Annapolis, Md.
6. Chapel, S.W. elevation

3/50



1. St. Charles College
2. Catonsville, Maryland
3. John C. Murphy
4. March 3, 1983
5. Maryland Historical Trust, Annapolis, Md.
6. Chapel, N.E. elevation

4/50





1. St. Charles College
2. Catonsville, Maryland
3. John C. Murphy
4. March 3, 1983
5. Maryland Historical Trust, Annapolis, Md.
6. Chapel, S.E. elevation

5/50



1. St. Charles College
2. Catonsville, Maryland
3. John C. Murphy
4. March 3, 1983
5. Maryland Historical Trust, Annapolis, Md.
6. Chapel - View to Northwest

6/50



1. St. Charles College
2. Catonsville, Maryland
3. John C. Murphy
4. March 3, 1983
5. Maryland Historical Trust, Annapolis, Md.
6. Chapel - Main Altar (S.E. Elevation)

7/50



1. St. Charles College
2. Catonsville, Maryland
3. John C. Murphy
4. March 3, 1983
5. Maryland Historical Trust, Annapolis, Md.
6. Chapel - View to Southeast

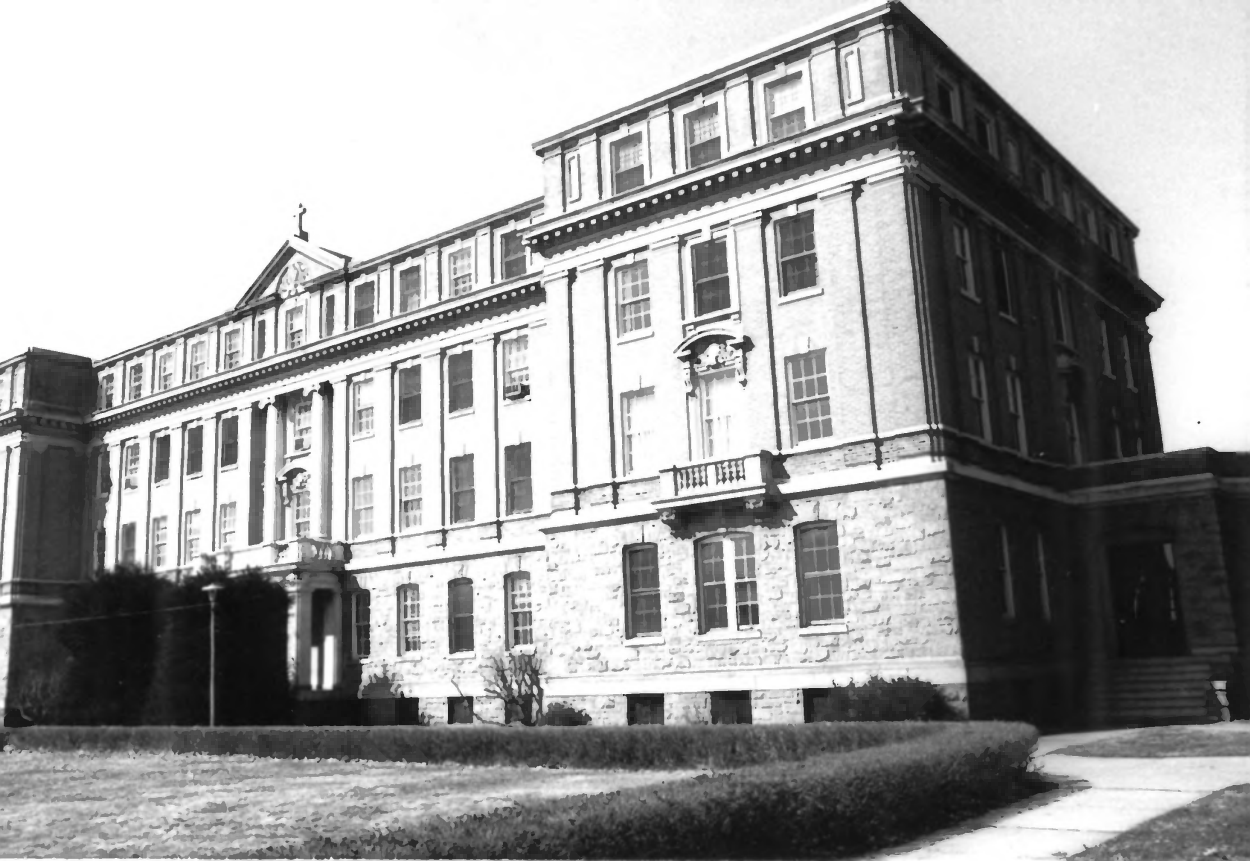
8/50





1. St. Charles College
2. Catonsville, Maryland
3. John C. Murphy
4. March 3, 1983
5. Maryland Historical Trust, Annapolis, Md.
6. Administration Building, Southeast elevation

9/50



1. St. Charles College
2. Catonsville, Maryland
3. John C. Murphy
4. March 3, 1983
5. Maryland Historical Trust, Annapolis, Md.
6. Administration Building, N.E. elevation

10/50



NO  
PARKING

1. St. Charles College
2. Catonsville, Maryland
3. John C. Murphy
4. March 3, 1983
5. Maryland Historical Trust, Annapolis, Md.
6. Administration Building, N.W. elevation

11/50



1. St. Charles College
2. Catonsville, Maryland
3. John C. Murphy
4. March 3, 1983
5. Maryland Historical Trust, Annapolis, Md.
6. Administration Building - First Floor Hall

12/50





1. St. Charles College
2. Catonsville, Maryland
3. John C. Murphy
4. March 3, 1983
5. Maryland Historical Trust, Annapolis, Md.
6. Administration Building - Stairways at west end

13/50



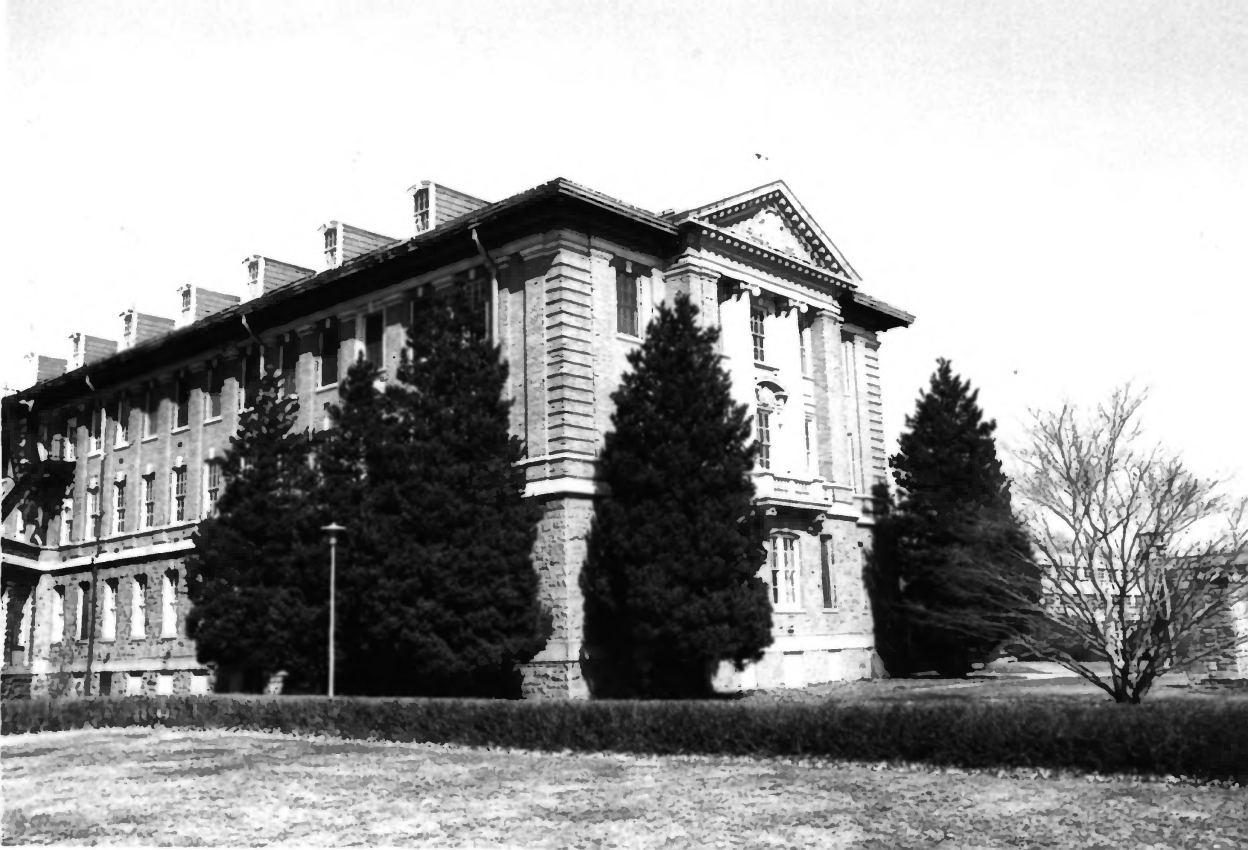
1. St. Charles College
2. Catonsville, Maryland
3. John C. Murphy
4. March 3, 1983
5. Maryland Historical Trust, Annapolis, Md.
6. Administration Building - Classroom

14/50



1. St. Charles College
2. Catonsville, Maryland
3. John C. Murphy
4. March 3, 1983
5. Maryland Historical Trust, Annapolis, Md.
6. Old Dormitory, N.E. elevation

15/50



1. St. Charles College
2. Catonsville, Maryland
3. John C. Murphy
4. March 3, 1983
5. Maryland Historical Trust, Annapolis, Md.
6. Old Dormitory, S.W. elevation

16/50





1. St. Charles College
2. Catonsville, Maryland
3. John C. Murphy
4. March 3, 1983
5. Maryland Historical Trust, Annapolis, Md.
6. Old Dormitory, N.W. elevation

17/50



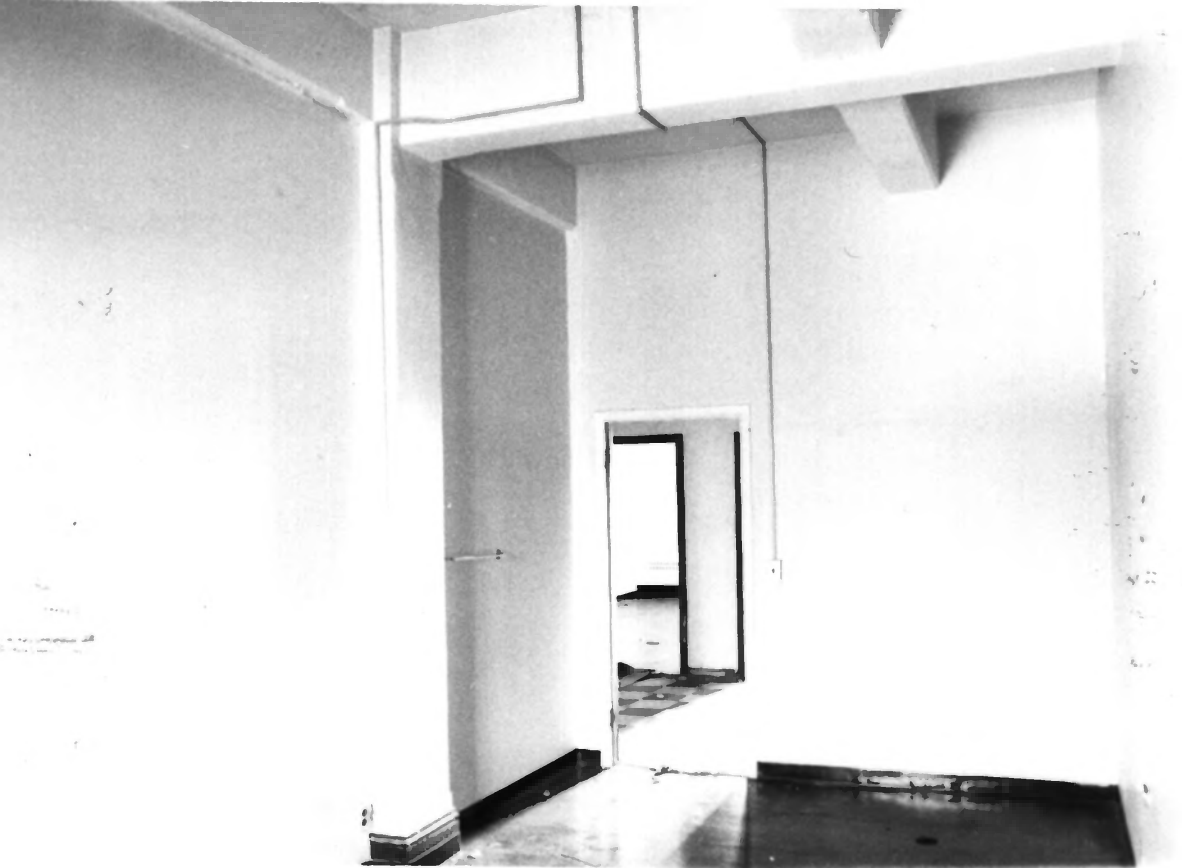
1. St. Charles College
2. Catonsville, Maryland
3. John C. Murphy
4. March 3, 1983
5. Maryland Historical Trust, Annapolis, Md.
6. Old Dormitory, S.E. Elevation

18/50



1. St. Charles College
2. Catonsville, Maryland
3. John C. Murphy
4. March 3, 1983
5. Maryland Historical Trust, Annapolis, Md.
6. Old Dormitory - Stairs

19/50



1. St. Charles College
2. Catonsville, Maryland
3. John C. Murphy
4. March 3, 1983
5. Maryland Historical Trust, Annapolis, Md.
6. Old Dormitory - Dormitory room

20/50





Something went wrong while we were encoding this page.  
Please check the log file to find out the details.

1. St. Charles College
2. Catonsville, Maryland
3. John C. Murphy
4. March 3, 1983
5. Maryland Historical Trust, Annapolis, Md.
6. Old Dormitory - Auditorium

21/50



1. St. Charles College
2. Catonsville, Maryland
3. John C. Murphy
4. March 3, 1983
5. Maryland Historical Trust, Annapolis, Md.
6. Old Dormitory & New Dormitory - to North

22/50



1. St. Charles College
2. Catonsville, Maryland
3. John C. Murphy
4. March 3, 1983
5. Maryland Historical Trust, Annapolis, Md.
6. Old Dormitory & New Dormitory - to North

23/50



1. St. Charles College
2. Catonsville, Maryland
3. John C. Murphy
4. March 3, 1983
5. Maryland Historical Trust, Annapolis, Md.
6. New Dormitory - Chapel

28/50





1. St. Charles College
2. Catonsville, Maryland
3. John C. Murphy
4. March 3, 1983
5. Maryland Historical Trust, Annapolis, Md.
6. New Dormitory - Dormitory Room

29/80



1. St. Charles College
2. Catonsville, Maryland
3. John C. Murphy
4. March 3, 1983
5. Maryland Historical Trust, Annapolis, Md.
6. Dining Hall, S.W. elevation

30/50



1. St. Charles College
2. Catonsville, Maryland
3. John C. Murphy
4. March 3, 1983
5. Maryland Historical Trust, Annapolis, Md.
6. Dining Hall, N.E. elevation

31/50



1. St. Charles College
2. Catonsville, Maryland
3. John C. Murphy
4. March 3, 1983
5. Maryland Historical Trust, Annapolis, Md.
6. Dining Hall - Passageway

32/50





1. St. Charles College
2. Catonsville, Maryland
3. John C. Murphy
4. March 3, 1983
5. Maryland Historical Trust, Annapolis, Md.
6. Dining Hall @ Main Entrance

33/50



1. St. Charles College
2. Catonsville, Maryland
3. John C. Murphy
4. March 3, 1983
5. Maryland Historical Trust, Annapolis, Md.
6. Dining Hall - View to Northeast

34/50



1. St. Charles College
2. Catonsville, Maryland
3. John C. Murphy
4. March 3, 1983
5. Maryland Historical Trust, Annapolis, Md.
6. Dining Hall - View to Southwest

35/50



1. St. Charles College
2. Catonsville, Maryland
3. John C. Murphy
4. March 3, 1983
5. Maryland Historical Trust, Annapolis, Md.
6. Convent, S.W. elevation

36/50





1. St. Charles College
2. Catonsville, Maryland
3. John C. Murphy
4. March 3, 1983
5. Maryland Historical Trust, Annapolis, Md.
6. Convent, N.W. elevation

37/50

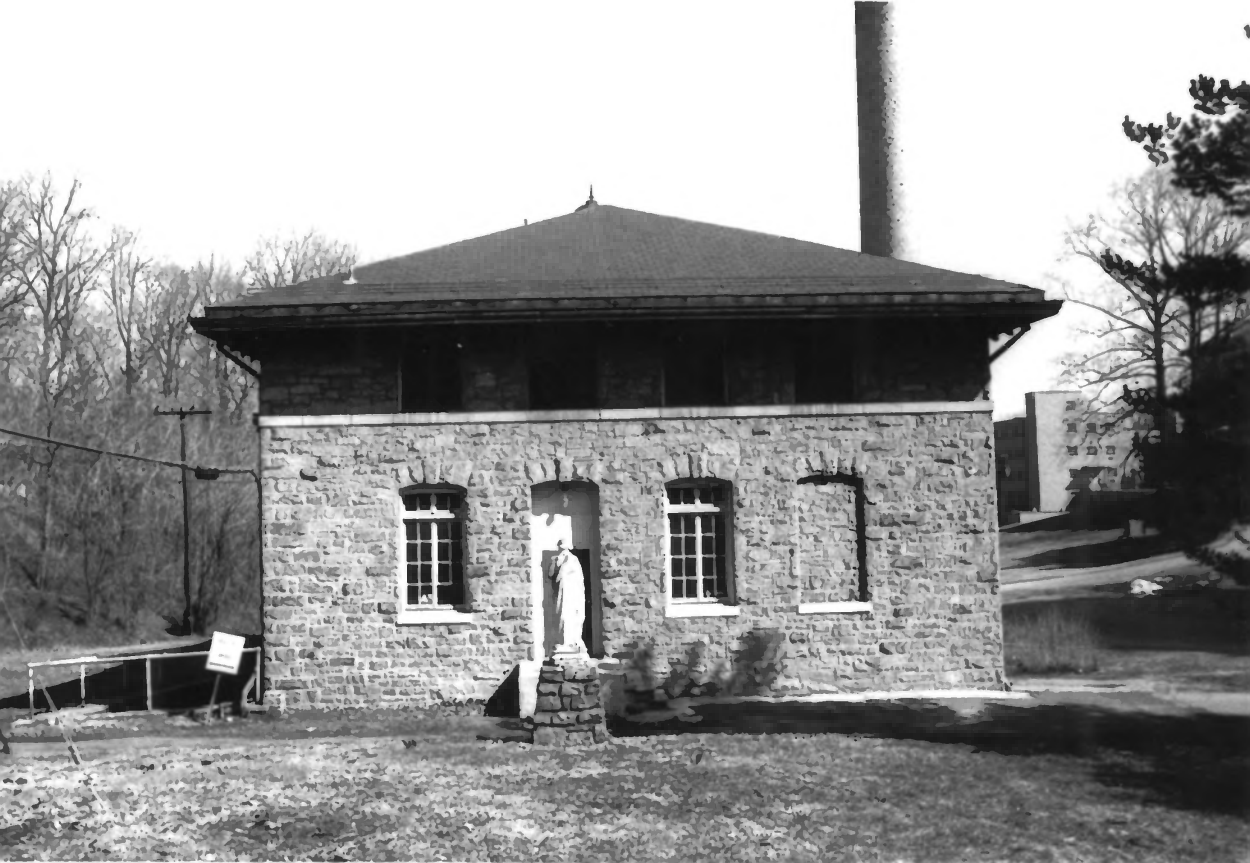


1. St. Charles College
2. Catonsville, Maryland
3. John C. Murphy
4. March 3, 1983
5. Maryland Historical Trust, Annapolis, Md.
6. Convent, S.W. elevation

36/50

1. St. Charles College
2. Catonsville, Maryland
3. John C. Murphy
4. March 3, 1983
5. Maryland Historical Trust, Annapolis, Md.
6. Convent - Convent Room

39/50



1. St. Charles College
2. Catonsville, Maryland
3. John C. Murphy
4. March 3, 1983
5. Maryland Historical Trust, Annapolis, Md.
6. Power House, S.W. elevation

40/50





1. St. Charles College
2. Catonsville, Maryland
3. John C. Murphy
4. March 3, 1983
5. Maryland Historical Trust, Annapolis, Md.
6. Power House, S.E. elevation

#/50



1. St. Charles College
2. Catonsville, Maryland
3. John C. Murphy
4. March 3, 1983
5. Maryland Historical Trust, Annapolis, Md.
6. Power House, N.E. elevation

42/50



1. St. Charles College
2. Catonsville, Maryland
3. John C. Murphy
4. March 3, 1983
5. Maryland Historical Trust, Annapolis, Md.
6. Power House, N.W. elevation

43/50



1. St. Charles College
2. Catonsville, Maryland
3. John C. Murphy
4. March 3, 1983
5. Maryland Historical Trust, Annapolis, Md.
6. Stone Building, East elevation

44/50





1. St. Charles College
2. Catonsville, Maryland
3. John C. Murphy
4. March 3, 1983
5. Maryland Historical Trust, Annapolis, Md.
6. Stone Building, West elevation

45/50



1. St. Charles College
2. Catonsville, Maryland
3. John C. Murphy
4. March 3, 1983
5. Maryland Historical Trust, Annapolis, Md.
6. Stone Building, North elevation

46/50



1. St. Charles College
2. Catonsville, Maryland
3. John C. Murphy
4. March 3, 1983
5. Maryland Historical Trust, Annapolis, Md.
6. Stone Building, South elevation

47/50



1. St. Charles College
2. Catonsville, Maryland
3. John C. Murphy
4. March 3, 1983
5. Maryland Historical Trust, Annapolis, Md.
6. Frederick House, West elevation

48/50





1. St. Charles College
2. Catonsville, Maryland
3. John C. Murphy
4. March 3, 1983
5. Maryland Historical Trust, Annapolis, Md.
6. Frederick House, North & East elevation

49/50



1. St. Charles College
2. Catonsville, Maryland
3. John C. Murphy
4. March 3, 1983
5. Maryland Historical Trust, Annapolis, Md.
6. Frederick House, South elevation

50/50



St. Charles College (Gym)  
711 Maiden Choice Lane  
Catonsville, Md.

John C. Murphy  
March 16, 1984

Front facade (photographed facing North)



St. Charles College (Gym)  
711 Maiden Choice Lane  
Catoonsville, Md.

John C. Murphy,  
March 16, 1984

Reur Juca del (photographer facing South





St. Charles College  
711 Maiden Choice Lane  
Catonsville, Md.

John C. Murphy,  
March 16, 1984

Interior (photographer facing South)



1.

Gym - St. Charles College  
North Façade, photoquypter facing South

2-26-84

Exterior



3

Sum-st. Charles College

South facade, photograph facing north

2-26-24

Exterior



5

Gym - St. Charles College

Interior, photoglyph facing South

2-26-84

Interior





6

Gym - St. Charles College

Interior, photographer facing North

2-26-84

Interior