



UNITED STATES DEPARTMENT OF THE INTERIOR
NATIONAL PARK SERVICE

**NATIONAL REGISTER OF HISTORIC PLACES
PROPERTY PHOTOGRAPH FORM**

FOR NPS USE ONLY	
RECEIVED	MAY 31 1977
DATE ENTERED	JUN 9 1978

SEE INSTRUCTIONS IN *HOW TO COMPLETE NATIONAL REGISTER FORMS*
TYPE ALL ENTRIES ENCLOSE WITH PHOTOGRAPH

1 NAME

HISTORIC

Yosemite Transportation Company Office

AND/OR COMMON

Wells Fargo Office

2 LOCATION

CITY, TOWN

____VICINITY OF

COUNTY

STATE

Yosemite Nat'l pk, Wawona, Pioneer History Center

Mariposa

California

3 PHOTO REFERENCE

PHOTO CREDIT Dean Shenk

DATE OF PHOTO

National Park Service

10/75

NEGATIVE FILED AT

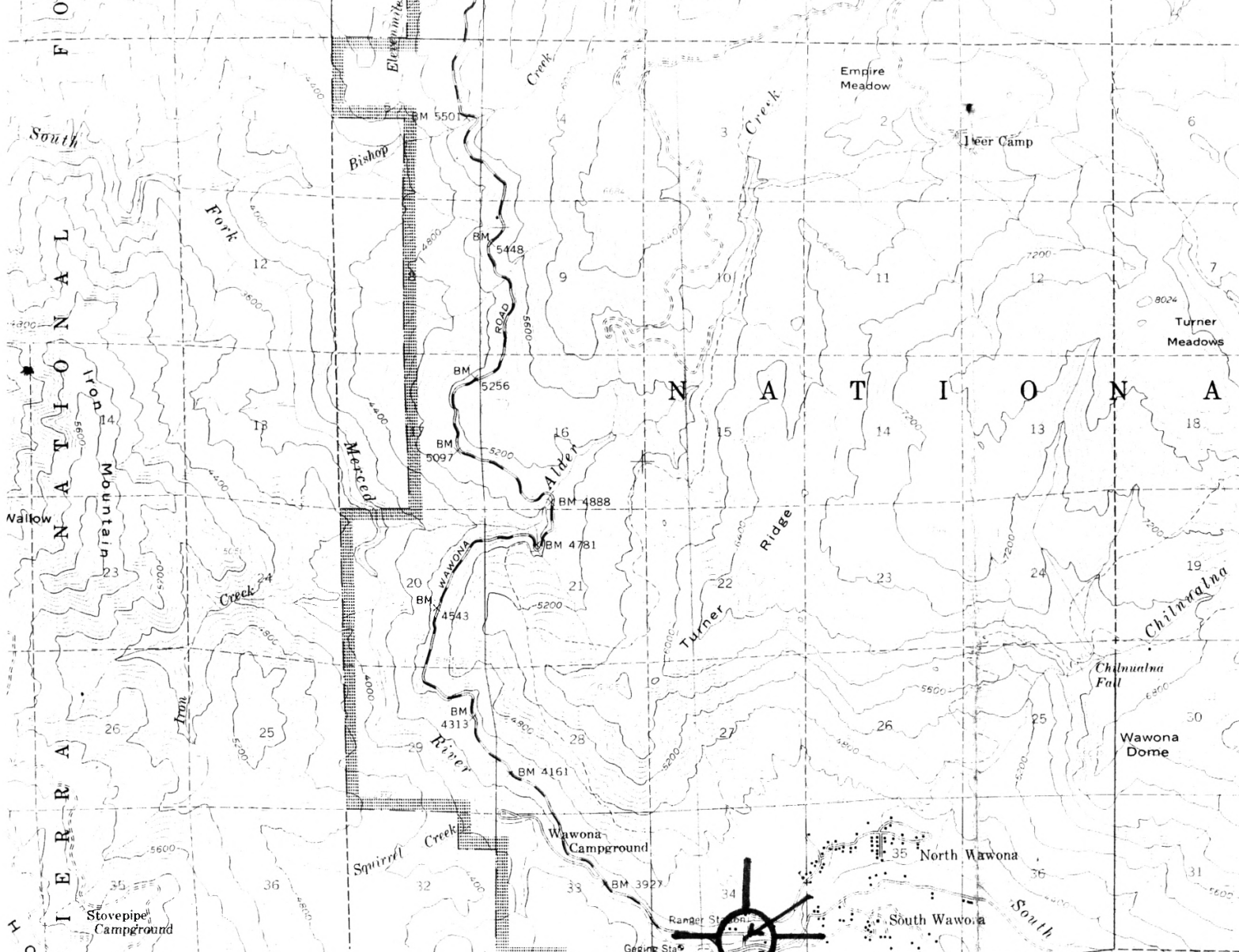
Western Regional Offcie, NPS, 450 Golden Gate Ave., Box 36063, San Francisco, California

4 IDENTIFICATION

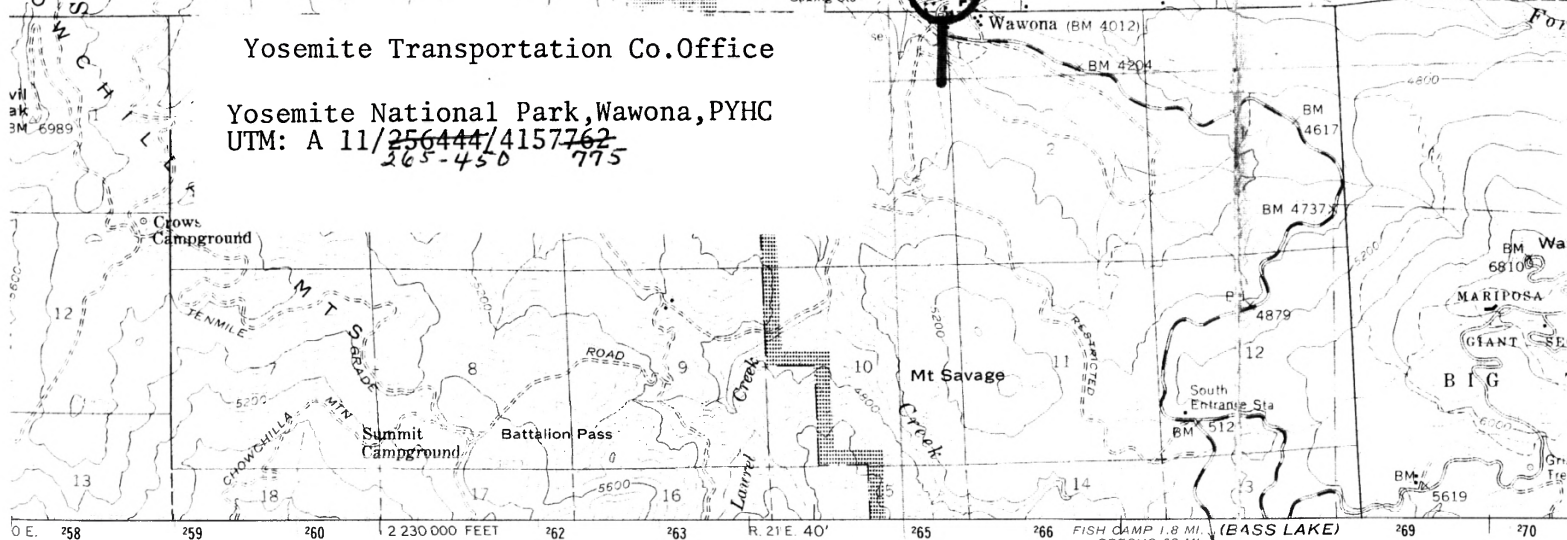
DESCRIBE VIEW, DIRECTION, ETC. IF DISTRICT, GIVE BUILDING NAME & STREET

PHOTO NO

Yosemite Transportation Co. Southwestern and Southeastern sides

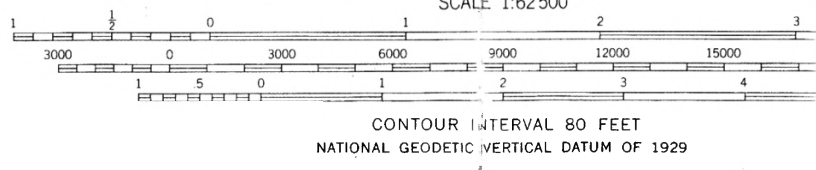
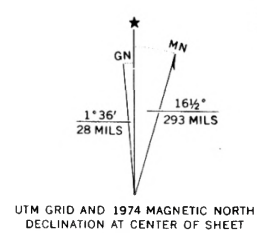


Yosemite Transportation Co. Office
 Yosemite National Park, Wawona, PYHC
 UTM: A 11/256444/4157762
 265-450 775



dated, and published by the Geological Survey
 JSGS and USC&GS
 from aerial photographs by photogrammetric methods
 graphs taken 1955. Advance field check 1956
 rojection. 1927 North American datum
 t grid based on California coordinate system, zone 3
 Universal Transverse Mercator grid ticks,
 own in blue

1 lines indicate approximate locations
 nsurveyed in T. 2 S.-R. 22 E., T. 3 S.-R. 23 E., and
 2 S.-R. 21 E., T. 3 S.-R. 20 E., and T. 5 S.-R. 22 E.
 rmitted in T. 2 S.-R. 23 E., T. 4 S.-R. 23 E., and
 3 S.-R. 22 E., and T. 4 S.-R. 20 E., because of
 data



THIS MAP COMPLIES WITH NATIONAL MAP ACCURACY STANDARDS
 FOR SALE BY U. S. GEOLOGICAL SURVEY, DENVER, COLORADO 80225, OR RESTON, VIRGINIA
 A FOLDER DESCRIBING TOPOGRAPHIC MAPS AND SYMBOLS IS AVAILABLE ON REQUEST