



Photo #1

Wingfield, John Henry "Hank," House

Yavapai County, Arizona

by Michael F. Anderson

15 May 1998

Negative in Anderson's possession

Front of the home, facing north.



Photo # 2

Wingfield, John Henry "Hank," House

Yavapai County, Arizona

by Michael F. Anderson

15 May 1998

negative in Anderson's possession

North and west sides of home, facing southeast



Photo # 3

Wingfield, John Henry "Hank," House

Yavapai County, Arizona

by Michael F. Anderson

15 May 1998

negative in Anderson's possession

North and portion of east sides of home, facing southwest



Photo # 4

Wingfield, John Henry "Hank," House

Yavapai County, Arizona

by Michael F. Anderson

15 May 1998

Negative in Anderson's possession

garage, facing northeast



Photo #5

Wingfield, John Henry "Hank," House

Yavapai County, Arizona

by Michael F. Anderson

15 May 1998

negative in Anderson's possession

well house, facing northeast



Photo #6

Wingfield, John Henry "Hank," House

Yavapai County, Arizona

by Michael F. Anderson

15 May 1998

negative in Anderson's possession

tack house, facing northeast

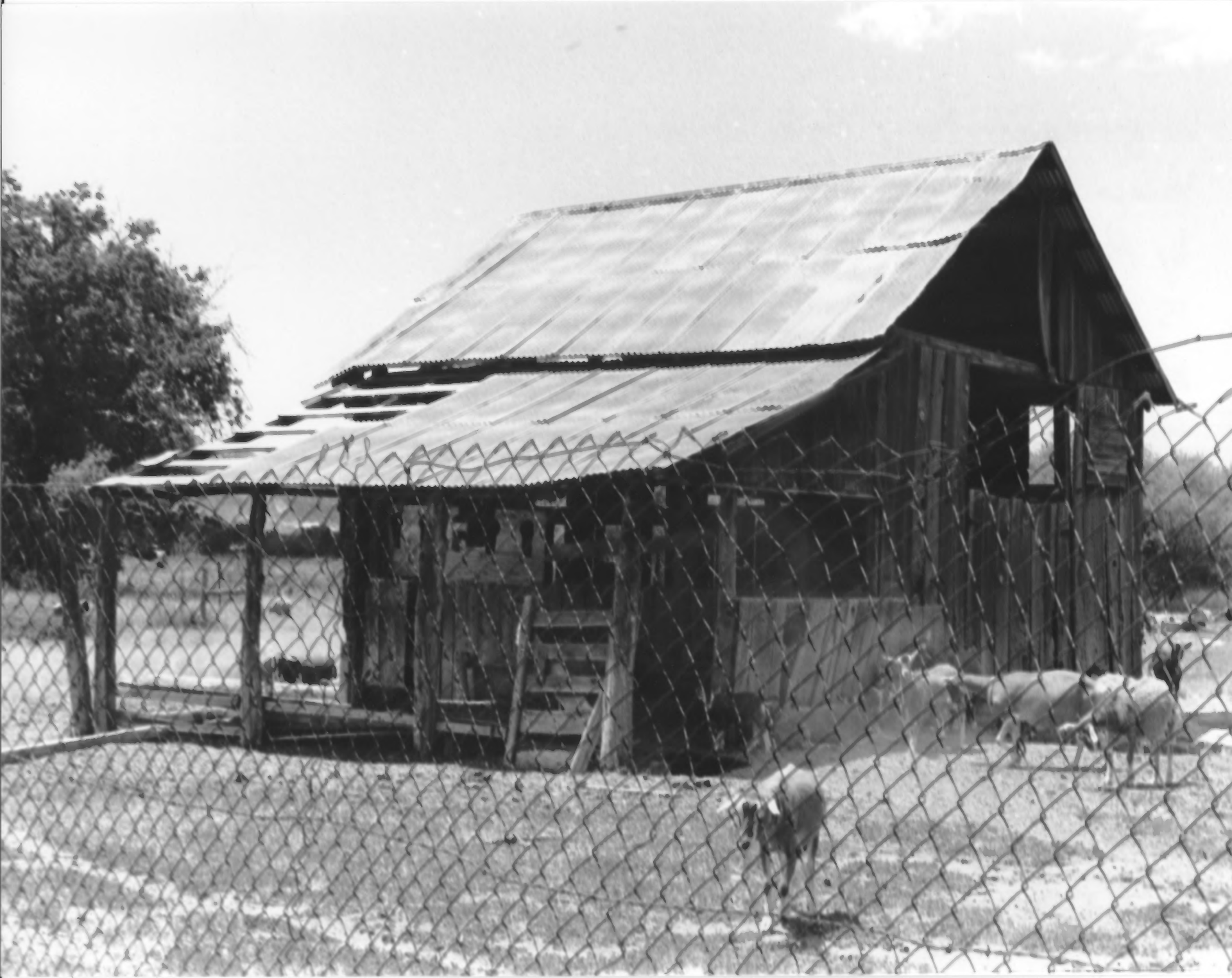


Photo # 7

Wingfield, John Henry "Hank," House

Yavapai County, Arizona

by Michael F. Anderson

15 May 1998

negative in Anderson's possession

barn, facing north west



Photo # 8

Wingfield, John Henry "Hank," House
Yavapai County, Arizona
by Michael F. Anderson

15 May 1998

negative in Anderson's possession
blacksmith's shed, facing south



Photo # 9

Wingfield, John Henry "Hank," House
Yavapai County, Arizona

by Michael F. Anderson

15 May 1998

negative in Anderson's possession

pumphouse, facing west