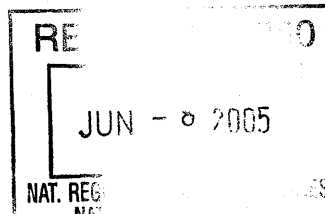


United States Department of the Interior
National Park Service

National Register of Historic Places
Registration Form



This form is for use in nominating or requesting determinations for individual properties and districts. See instructions in *How to Complete the National Register of Historic Places Registration Form* (National Register Bulletin 16A). Complete each item by marking "x" in the appropriate box or by entering the information requested. If any item does not apply to the property being documented, enter "N/A" for "not applicable". For functions, architectural classification, materials, and areas of significance, enter only categories and subcategories from the instructions. Place additional entries and narrative items on continuation sheets (NPS Form 10-900a). Use a typewriter, word processor, or computer to complete all items.

1. Name of Property

Historic name Ohiowa Public School

Other names/site number District No. 40 School, FM09-023

2. Location

Street & number 202 South Main St.

Not for publication ☐

City or town Ohiowa

Vicinity ☐

State Nebraska Code NE County Fillmore

Code 059 Zip code 68416

3. State/Federal Agency Certification

As the designated authority under the National Historic Preservation Act of 1986, as amended, I hereby certify that this ☒ nomination ☐ request for determination of eligibility meets the documentation standards for registering properties in the National Register of Historic Places and meets the procedural and professional requirements set forth in 36 CFR Part 60. In my opinion, the property ☒ meets ☐ does not meet the National Register Criteria. I recommend that this property be considered significant ☐ nationally ☐ statewide ☒ locally. (See continuation sheet for additional comments.)

Wendell Sommer
Signature of certifying official

6/3/05
Date

Director, Nebraska State Historical Society
State or Federal agency and bureau

In my opinion, the property ☐ meets ☐ does not meet the National Register criteria. (See continuation sheet for additional comments.)

Signature of certifying official/Title

Date

State or Federal agency and bureau

4. National Park Service Certification

I, hereby, certify that this property is:

☒ entered in the National Register.

☐ see continuation sheet.

☐ determined eligible for the National Register.

☐ see continuation sheet.

☐ determined not eligible for the National Register.

☐ removed from the National Register.

☐ other, (explain): _____

Edson H. Beall 7/23/05

[Signature]
Signature of Keeper

Date of Action

Ohioa Public School

Name of Property

Fillmore County, Nebraska

County and State

5. Classification

Ownership of Property

(Check as many boxes as apply)

☐ Private

☒ Public-local

☐ Public-state

☐ Public-federal

Category of Property

(Check only one box)

☒ Building(s)

☐ District

☐ Site

☐ Structure

☐ Object

Number of Resources within Property

(Do not include previously listed resources in the count.)

Contributing

1

Noncontributing

Buildings

Sites

Structures

Objects

Total

1

Name of related multiple property listing

(Enter "N/A" if property is not part of a multiple property listing.)

Historic and Architectural School Buildings in Nebraska

Number of contributing resources previously listed in the National Register

0

6. Function or Use

Historic Functions

(Enter categories from instructions.)

EDUCATION

Current Functions

(Enter categories from instructions.)

VACANT/NOT IN USE

7. Description

Architectural Classification

(Enter categories from instructions.)

Other-Schoolhouse vernacular

Materials

(Enter categories from instructions.)

Foundation CONCRETE

Walls BRICK

Roof ASPHALT

Other

Narrative Description

(Describe the historic and current condition of the property on one or more continuation sheets.)

8. Statement of Significance

Applicable National Register Criteria

(Mark "X" in one or more boxes for the criteria qualifying the property for National Register listing.)

- ☒ **A** Property is associated with events that have made a significant contribution to the broad patterns of our history.
- ☐ **B** Property is associated with the lives of persons significant in our past.
- ☒ **C** Property embodies the distinctive characteristics of a type, period, or method of construction or represents the work of a master, or possesses high artistic values, or represents a significant and distinguishable entity whose components lack individual distinction.
- ☐ **D** Property has yielded, or is likely to yield information important in prehistory or history.

Criteria Considerations

(Mark "X" in all the boxes that apply.)

Property is:

- ☐ **A** Owned by a religious institution or used for religious purposes.
- ☐ **B** Removed from its original location.
- ☐ **C** A birthplace or a grave.
- ☐ **D** A cemetery.
- ☐ **E** A reconstructed building, object, or structure.
- ☐ **F** A commemorative property.
- ☐ **G** Less than 50 years of age or achieved significance within the past 50 years.

Narrative Statement of Significance

(Explain the significance of the property on one or more continuation sheets.)

Areas of Significance

(Enter categories from instructions.)

ARCHITECTURE

EDUCATION

Period of Significance

1921-1954

Significant Dates

1921

Significant Person

(Complete if Criterion B is marked above.)

Cultural Affiliation

N/A

Architect/Builder

Davis and Wilson-Architects

Edward Green-Builder

9. Major Bibliographical References

Bibliography

(Cite the books, articles, and other sources used in preparing this form on one or more continuation sheets.)

Previous documentation on file (NPS):

- ☐ Preliminary determination of individual listing (36 CFR 67) has been requested
- ☐ Previously listed in the National Register
- ☐ Previously determined eligible by the National Register
- ☐ Designated a National Historic Landmark
- ☐ Recorded by Historic American Buildings Survey # _____
- ☐ Recorded by Historic American Engineering Record # _____

Primary location for additional data:

- ☒ State Historic Preservation Office
- ☐ Other State agency
- ☐ Federal agency
- ☐ Local Government
- ☐ University
- ☐ Other
- Name of repository: _____

Ohioa Public School

Name of Property

Fillmore County, Nebraska

County and State

10. Geographical Data

Acreage of property Four

UTM References (place additional UTM references on a continuation sheet).

	Zone	Easting	Northing		Zone	Easting	Northing
1.	14	631236	4474286	3.			
2.				4.			

[] See continuation sheet

Verbal Boundary Description

(Describe the boundaries of the property on a continuation sheet.)

Boundary Justification

(Explain why the boundaries were selected on a continuation sheet.)

11. Form Prepared By

name/title Bill Callahan

organization Nebraska State Historic Preservation Office

date 4/27/05

street & number 1500 R Street

telephone 402/471-4788

city or town Lincoln

state NE

zip code 68501-2554

Additional Documentation

Submit the following items with the completed form:

Continuation Sheets

Maps

A **USGS map** (7.5 or 15 minute series) indicating the property's location.

A **Sketch map** for historic districts and properties having large acreage or numerous resources.

Photographs

Representative **black and white photographs** of the property.

Additional items

(Check with the SHPO or FPO for any additional items.)

Property Owner

(Complete this item at the request of the SHPO or FPO.)

name/title School District #40

street & number P.O. Box 128

telephone 402/295-2377

city or town Ohioa

state NE

zip code 68416

Paperwork Reduction Act Statement: This information is being collected for applications to the National Register of Historic Places to nominate properties for listing or determined eligibility for listing, to list properties, and to amend existing listings. Response to this request is required to obtain a benefit in accordance with the National Historic Preservation Act, as amended, (15 USC 470 et seq.).

Estimated Burden Statement: Public reporting burden for this form is estimated to average 18.1 hours per response including the time for reviewing instructions, gathering and maintaining data, and completing and reviewing the form. Direct comments regarding this burden estimate or any aspect of this form to the chief, Administrative Services Division, National Park Service, P.O. Box 37127, Washington, DC 20013-7127; and the Office of Management and Budget, Paperwork Reductions Project (1024-0018), Washington, DC 20503.

United States Department of the Interior
National Park Service

National Register of Historic Places
Continuation Sheet

Ohiowa Public School

Name of Property

Fillmore County, Nebraska

County and State

Section 7 Page 1

The Ohiowa Public School is located on the south edge of Ohiowa, Fillmore County Nebraska (2000 Pop. 142). Ohiowa is located one mile south of Nebraska Route 74 approximately 66 miles southwest of Lincoln, the state capital, fifteen miles southeast of Geneva, the county seat and thirty miles north of the Kansas border. This part of Nebraska is characterized by flat, relatively treeless plains, and the landscape is dominated by row-crop agriculture. Main Street is a two-lane gravel road that runs due south from Nebraska 74. After passing by the local grain Co-Op, Main Street bisects the Ohiowa business district: a small but fine collection of early 20th century commercial buildings that in the opinion of NESHPO staff is eligible for listing on the National Register. The Ohiowa Public School is located two blocks south of the business district. The vast plains of the region are visible south of the school building.

The School is positioned on a single block bounded by Main Street on the east, Strang Street on the south, Luke Street on the west and Shickley Street on the north. The School is located on the southeast corner of Strang and Main Streets. Playground equipment is found west of the school building, and an L-shaped row of trees bounds the lot on the Luke and Shickley street sides. The remainder of the lot is primarily green space.

The Ohiowa Public School is a simple red brick two-story, flat-roofed building constructed in 1921. The primary façade of the building faces east, and entry to the school is attained by seven broad concrete steps. Three double doors dominate a large bay that creates the primary entry portal for the School. All three doors are topped by fan-light windows, each of which are in turn are topped by a small two-over-two double-hung wood window. The central double-hung window has been boarded-over.

The central bay is flanked by brick pilasters. The pilasters have stepped cast concrete bases and are capped by concrete slabs adorned by decorative Greek key-work. These pilasters are repeated on the corners of the primary façade on the main building. The cornice of the entry bay is topped by a decorative brick-work parapet and a bracketed cast concrete cornice. The decorative brick-work is repeated along the parapet of the entire building, though the bracketed cornice is replaced by a simple cast concrete string course on the main building. Two decorative cast iron lampposts with griffin feet are located in front of the entry-bay pilasters.

The south façade of the School primarily presents a massive brick façade punctuated by three four-over-four double hung and one two-over-two double hung wood windows on the second floor. The first floor has a secondary entrance and two small fixed windows that open into the gymnasium.

The rear (west) façade of the School retains nine three four-over-four double hung wood windows on the second floor and five of the small fixed windows that open into the gymnasium. The south half of the central second story window has been modified to incorporate a door, which opens onto a steel fire escape. The date of this modification is unknown. The north façade of the School retains five second floor four-over-four double hung wood windows.

The original configuration of the Ohiowa School's second story windows included an upper six-light fixed pane transom window. All of these windows were covered over at an unknown date. Additionally, physical evidence indicates that the small fixed windows that open onto the gym were once larger windows. Again, the date of the change is unknown. These treatments only marginally detract from the overall historic integrity of the Ohiowa School.

Upon entering a vestibule at the Ohiowa School (created by the entry bay), a visitor must either go up a broad staircase to the second floor or down one of two narrower stairways to the half-basement. The former administrative office/study hall is located at the top of the broad stairway. Three classrooms each are located on the north and south sides of the second

United States Department of the Interior
National Park Service

National Register of Historic Places
Continuation Sheet

Ohiowa Public School

Name of Property

Fillmore County, Nebraska

County and State

Section 7 Page 2

floor. The classroom on the northeast corner is equipped as a laboratory. Boys and girls coatrooms flank the stairway, and restrooms are located on the east side behind the stairway.

The gymnasium is found on the west side of the first floor. The showers are located on the south side of the gym, and a stage is located on the north side. The only seating for the gym is located in a balcony on the east side. A first floor classroom is located in the southeast corner of the first floor, and a cooking room is located on the northeast corner.

The existing design of the School reflects trends in education philosophy of the time it was constructed. The interior of the Ohiowa Public School is virtually intact from the date of its construction. The level of historic integrity of the School is extraordinary. Room configuration, wood trim, chalkboards, the gymnasium/auditorium and floor plans all remain intact. Coupled with the good integrity of the building's exterior and its overall excellent condition, the Ohiowa School represents an excellent example of 1920's school design.

United States Department of the Interior
National Park Service

National Register of Historic Places
Continuation Sheet

Ohiowa Public School

Name of Property

Fillmore County, Nebraska

County and State

Section 8 Page 1

Statement of Significance

In accordance with the registration requirements of *Historic and Architectural School Buildings in Nebraska* the Ohiowa Public School is eligible for the National Register of Historic Places under Criteria A and C. Locally significant, the Ohiowa Public School is associated with the development of education in Nebraska, and embodies the distinct characteristics of a type of school building.

School District Number 40 was created in March, 1872—five years before the village of Ohiowa was incorporated. The original schoolhouse was located south and east of the present town site. In 1888, a two-story frame schoolhouse was built at the site of the extant Ohiowa Public School building¹

The 1888 building suffered from significant problems as early as 1909. In a report to the District 40 school board that year, Superintendent E. F. Monroe stated: "The so-called gymnasium is used for the janitor's room, storage-room, etc. we have no storage-room at present. The gymnasium is and has been fitted up with apparatus just sufficient to make it dangerous to the pupils. Many accidents have already occurred. That end of the building is easily shaken and much running about in the gymnasium shakes the stove-pipes and stove legs loose in the two rooms over it and creates such a disturbance that it becomes a nuisance to all the departments in the building." Almost as an aside Superintendent Monroe added: "A new bulletin board is needed in the front hall."² In 1918 Superintendent John Lanz reported that the schoolhouse was in "...very poor: dangerous condition." And that a good bulletin board was needed in the front hall.³

"Soon after World War I..." the 1888 frame building was condemned because "School was dismissed more than once when the old schoolhouse started to rock in a strong wind."⁴ In reporting a June 13 1921 District 40 school board meeting, the June 16, 1921 the *Nebraska Signal-Ohiowa Leader* stated: "The old building is dangerous as well as disgraceful to the community. The building has been condemned by the state inspector...A vote was taken to get the opinion of the public as to whether to erect a new school building....(which) carried unanimously." On July 15, 1921 District 40 residents voted 94-28 for a \$70,000 bond to build a new school building. The July 21 *Leader* reported that "Even as great as is the necessity for a new building, there were several opposed, some fearing that too high taxation may follow."

According to the November 3, 1921 *Leader*, construction began on the Ohiowa Public School on October 28, 1921. The construction contract was let to Edward Green of Seward. According to blueprints in possession of District 40 officials at this writing, the Ohiowa School was designed by Davis and Wilson Architects of Lincoln. Davis and Wilson are known regionally as having designed excellent examples of public architecture with a large number listed in the National Register of Historic Places. Their designs include the 1925 Kearney Junior High School (NR 2000) and the 1923/1947 Fairbury High School and Auditorium (NR 1999). Between 1921 and 1953, Davis and Wilson designed plans for 40 schools across Nebraska.⁵

The pace of construction was somewhat slow, and the corner stone of the building was not laid until a cold and rainy April 3, 1922.⁶ (the cornerstone date of the School is MCMXXI, or 1921) Indeed, for the students of District 40, the 1922-23 school year began in the "...old wooden shack used as a school building."⁷ Classes were finally held in the new District 40

¹Wilbur G. Gaffney, *The Fillmore County Story*, 1968, Geneva Community Grange, P. 151

² *The Ohiowa History Book* 1987, P. 48

³ *Ibid*, P. 49.

⁴ Gaffney, P. 153

⁵ Elizabeth Miller, *National Register of Historic Places Nomination: Kearney Junior High School*. Sec. 8, P. 2

⁶ *Nebraska Signal/Ohiowa Leader*, April 6, 1922

⁷ *Ibid*, June 16, 1921

United States Department of the Interior
National Park Service

National Register of Historic Places
Continuation Sheet

Ohiowa Public School

Name of Property

Fillmore County, Nebraska

County and State

Section 8 Page 2

building on February 12, 1923. For the next eighty-one years, until May 2004, generations of children were educated in the Ohiowa Public School Building.

Section F, page 1 of the National Register Multiple Property Submission (MPS) *Historic and Architectural School Buildings in Nebraska* states:

To qualify for the NRHP, the property must be an intact example of a school or related resource and should retain essential elements of the seven aspects of integrity...Overall, the property must retain a high degree of physical integrity and should reflect its period of construction...The resource does not need to retain its historic function to be eligible...(and) can be eligible...under Criterion A for its historical association with education in Nebraska;...and/or Criterion C for its architectural significance, including representation of method of construction....or representative of a property type.

Section E, page 10 (subheading "Early School Architecture) of the MPS states:

National publications continued to advocate the ideas of the "modern schoolhouse"...the trade Journal *The Brickbuilder* featured this topic. The series addressed a variety of issues, including the classroom; wardrobes, toilets and special rooms...such as the cooking room, assembly hall, manual training room, (and) gymnasium...Brick (for obvious reasons) was discussed as the exterior material of choice for the modern school. Even the style of the building was discussed with the following: "The exterior treatment of a modern elementary school should always be dignified but never showy or ostentatious."

And on page 11:

New curriculum requirements often affected the types of specialized teaching areas that were incorporated into the design of school buildings, primarily at the junior high school and high school level...For example, a rising concern for health and nutrition led to the inclusion of a gymnasium, lunchroom and indoor bathrooms. In many cases, an assembly room or auditorium was also included, either as a separate room or as a stage at one end of the gymnasium.

The Ohiowa Public School retains superior physical integrity: the interior of the building is virtually intact from its construction, and the exterior window modifications do not significantly detract from the original design of the School. The quality of care and maintenance the School has received for over eighty years is remarkable. The Ohiowa Public School's long history in the village of Ohiowa is a testament to the quality of the building's construction and the thoughtfulness of its design. In accordance with the registration requirements of *Historic and Architectural School Buildings in Nebraska* the Ohiowa Public School is eligible for the National Register of Historic Places under Criteria A and C.

The building's future is somewhat uncertain. School District 40 has been subsumed by two neighboring school districts. The consensus of the community is to retain the building and find a use compatible both to the community's needs and the School's historic character. It is thought by the stewards of District 40 property and the community at large that National Register designation will support these efforts.

United States Department of the Interior
National Park Service

National Register of Historic Places
Continuation Sheet

Ohioa Public School

Name of Property

Fillmore County, Nebraska

County and State

Section 9 Page 1

Gaffney, Wilbur G. *The Fillmore County Story*. 1968, The Geneva Community Grange

Miller, Elizabeth *National Register of Historic Places Nomination: Kearney Junior High School*

(Nebraska State Historic Preservation Office, May, 2000)

Nebraska Signal/Ohioa Leader- June 16, 1921

Nebraska Signal/Ohioa Leader- July 21, 1921

Nebraska Signal/Ohioa Leader- November 3, 1921

Nebraska Signal/Ohioa Leader- November 24, 1921

Nebraska Signal/Ohioa Leader, April 6, 1922

Nebraska Signal/Ohioa Leader- August 24, 1922

Nebraska Signal/Ohioa Leader- November 16, 1922

Nebraska Signal/Ohioa Leader- February 15, 1923

No author cited-*The Ohioa Centennial History Book*, 1887-1987 No publisher.

United States Department of the Interior
National Park Service

**National Register of Historic Places
Continuation Sheet**

Ohiowa Public School

Name of Property

Fillmore County, Nebraska

County and State

Section 10 Page 1

Verbal Boundary description

See map

Boundary Justification

The boundary is that block historically associated with the Ohiowa Public School

United States Department of the Interior
National Park Service

National Register of Historic Places
Continuation Sheet

Ohiowa Public School

Name of Property

Fillmore County, Nebraska

County and State

Section Photos Page 1

Photographs

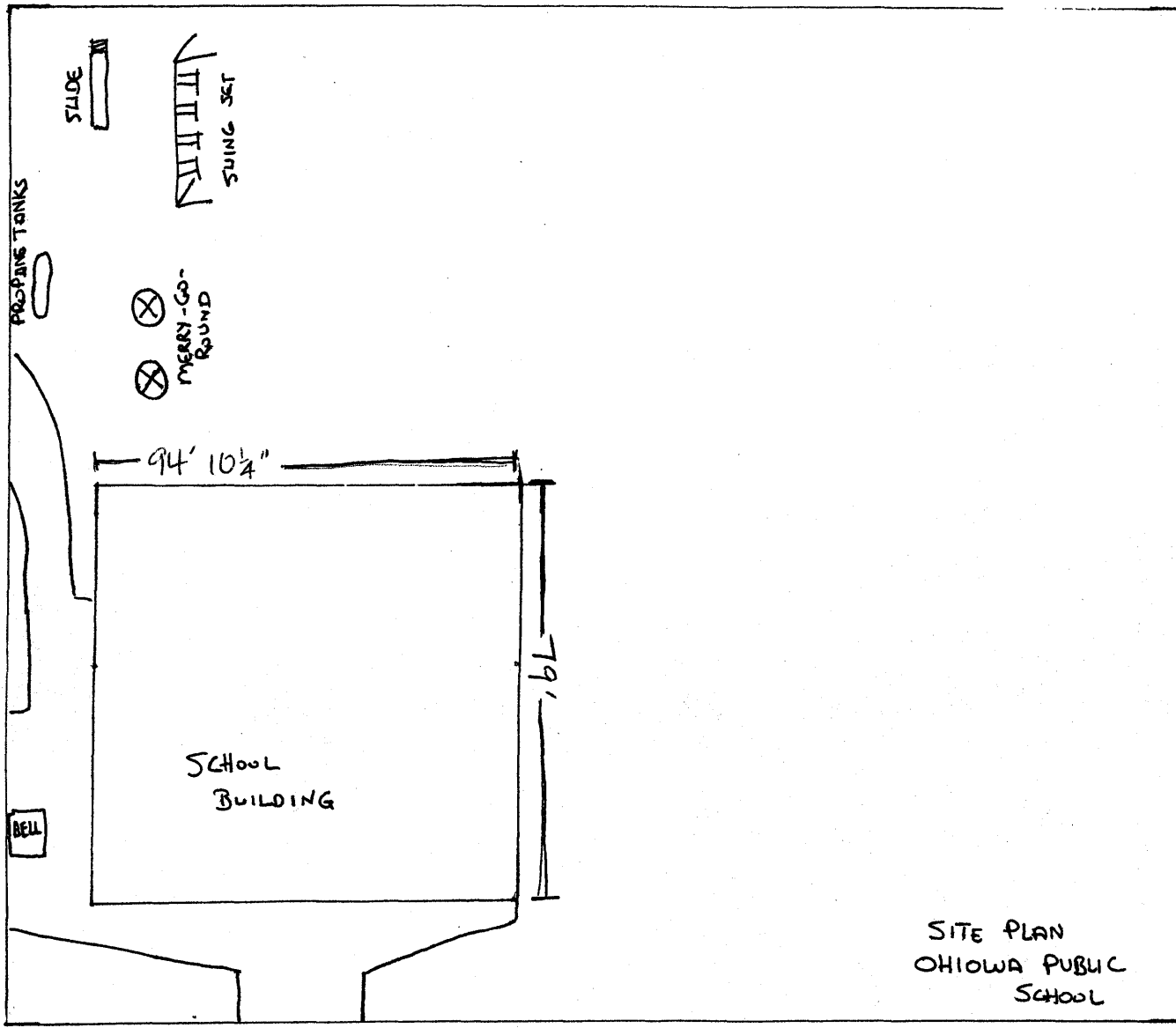
All photographs taken by Bill Callahan and Stacy Stupka-Burda, Nebraska State Historic Preservation Office in March 15, 2005. All negatives are located in the Nebraska State Historic Preservation Office.

Photograph	Description of Photograph	View
1 of 14	East façade	West
2 of 14	North and East facades	Southwest
3 of 14	West facade and playground	Northeast
4 of 14	South and West façades	Northeast
5 of 14	South and East facades	Northwest
6 of 14	East façade entry bay showing cornice detail	West
7 of 14	Main stairway	West
8 of 14	Pocket door at entry vestibule	South
9 of 14	Main Stair showing central entryway	East
10 of 14	Second floor, south-central classroom	Southwest
11 of 14	Second floor main hallway	NNW
12 of 14	Gymnasium and balcony	Southwest
13 of 14	Gymnasium from the balcony showing stage	Northeast
14 of 14	Gymnasium	East

SOUTH LUKE ST.

N
↓

STRANG ST.

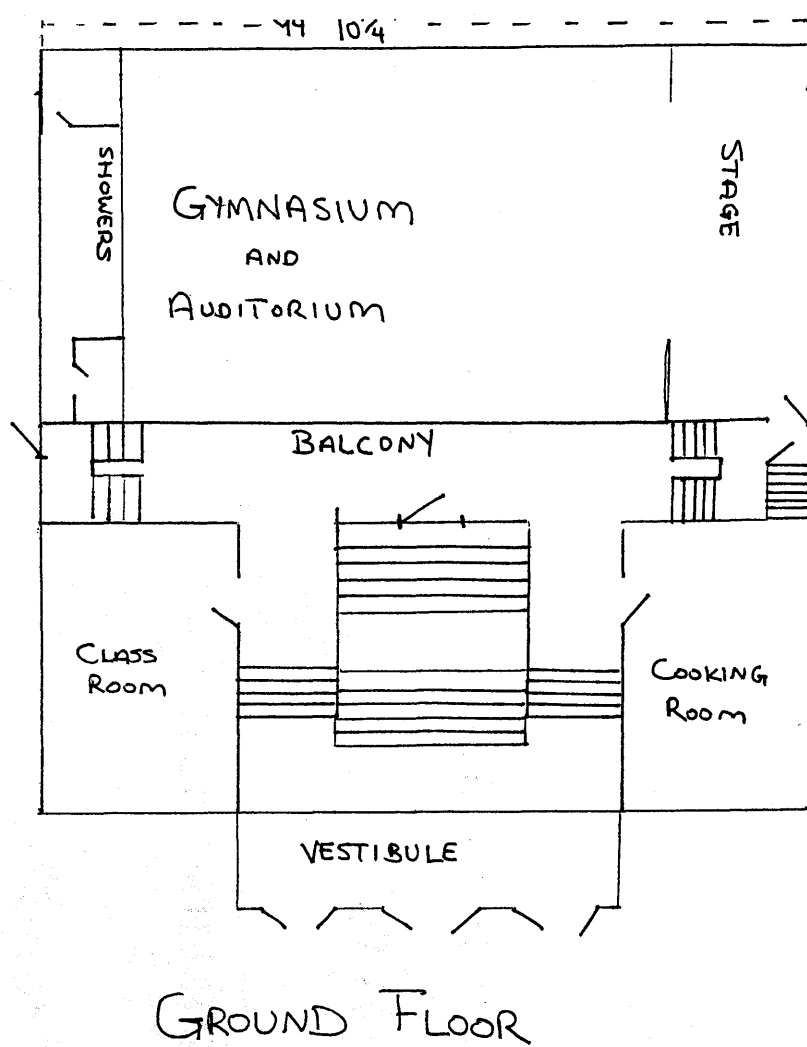


SITE PLAN
OHIOWA PUBLIC
SCHOOL

Map by Steven Most

MAIN STREET

N →



Floor Plans by
Steven Most

SECOND FLOOR

