



OLD LOCK PUMP HOUSE NATIONAL HISTORIC LANDMARK
CHESAPEAKE CITY (SOUTH) MARYLAND

CREDIT: PACITA de la CRUZ
NATIONAL PARK SERVICE

APRIL 1985

WEST ELEVATION - MUSEUM ENTRANCE

BOILER HOUSE (#2)

PHOTO 1 OF 19



OLD LOCK PUMP HOUSE NATIONAL HISTORIC LANDMARK
CHESAPEAKE CITY, (SOUTH) MARYLAND

CREDIT: FACITA T. de la CRUZ
NATIONAL PARK SERVICE

APRIL, 1985

WEST ELEVATION - MUSEUM ENTRANCE

(#2)

PHOTO 2 OF 19



OLD LOCK PUMP HOUSE NATIONAL HISTORIC LANDMARK
CHESAPEAKE CITY, (SOUTH) MARYLAND

CREDIT: PACITA T. de la CRUZ

NATIONAL PARK SERVICE

APRIL, 1985

SOUTH ELEVATION, THE PUMP HOUSE COMPLEX

PHOTO 3 OF 19



OLD LOCK PUMP HOUSE NATIONAL HISTORIC LANDMARK
CHESAPEAKE CITY, MARYLAND

CREDIT: PACITA T. de la CRUZ

NATIONAL PARK SERVICE

APRIL, 1985

SOUTH ELEVATION,

THE ORIGINAL OLD PUMP HOUSE

PHOTO 4 OF 19



OLD LOCK PUMP HOUSE NHL
CHESAPEAKE CITY, MARYLAND

CREDIT: PACITA T. de la CRUZ

NATIONAL PARK SERVICE

APRIL, 1985

SOUTH ELEVATION

EAST ENGINE BUILDING

5. ON INVENTORY

PHOTO 5 OF 19



OLD LOCK PUMP HOUSE NHL
CHESAPEAKE CITY, MARYLAND

CREDIT: PACITA T. de la CRUZ
NATIONAL PARK SERVICE

APRIL, 1985

SOUTH ELEVATION

DETAIL, WHEEL HOUSE, (CENTER)
#4 ON INVENTORY

PHOTO 6 OF 19



OLD LOCK PUMP HOUSE NHL
CHESAPEAKE CITY, MARYLAND

CREDIT: PACITA T. de la CRUZ.

NATIONAL PARK SERVICE

APRIL, 1985

SOUTH ELEVATION

WEST ENGINE BUILDING

3 ON INVENTORY

PHOTO 7 OF 19



OLD LOCK PUMP HOUSE N/H/L
CHESAPEAKE CITY, MARYLAND

CREDIT: PACITA T. de la CRUZ

NATIONAL PARK SERVICE
APRIL, 1985

SOUTH ELEVATION

BOILER HOUSE - (MUSEUM)

#2 ON INVENTORY

PHOTO 8 OF 19



OLD LOCK PUMP HOUSE N+H

CHESAPEAKE CITY, MARYLAND

CREDIT: PACITA T. de la CRUZ

APRIL, 1985 NORTH ELEVATION

THE OLD STEAM HOUSE (OLD PUMP HOUSE)

(OLDEST BUILDING IN COMPLEX)

#1 ON INVENTORY

PHOTO 9 OF 19



PUMP HOUSE OF OLD LOCK CANAL
BUILT 1837

THIS HOUSE WAS
ERECTED BY THE CORPORATION
OF THE
LOCKPORT CANAL AND LOCKS
AND WAS THE FIRST
ERECTED BY THE CORPORATION
OF THE
LOCKPORT CANAL AND LOCKS
AND WAS THE FIRST
ERECTED BY THE CORPORATION
OF THE
LOCKPORT CANAL AND LOCKS

OLD LOCK PUMP HOUSE NHL

CHESAPEAKE CITY, MARYLAND

CREDIT: PACITA T. de la CRUZ

APRIL, 1985

NORTH ELEVATION - WEST ENGINE BUILDING

(WHEEL HOUSE IN BACKGROUND)

(ETCHED TABLET IMPLIES INCORRECT INFORMATION
REGARDING THE STRUCTURE)

4 ON INVENTORY

PUMP HOUSE OF OLD LOCK CANAL
BUILT 1837

THIS TABLET
IS ERECTED BY THE PROPRIETORS
OF THE
CHESAPEAKE AND DELAWARE CANAL
TO COMMEMORATE ITS COMPLETION
ON THE 17TH OF OCTOBER 1837
AND
TO STAND AS A
TESTIMONIAL OF THEIR GRATITUDE

TO
JAMES C. FISHER, PRESIDENT
AND

THOMAS P. COPE, JOHN K. KANE, ROBERT M. LEWIS,
ISAAC C. JONES, ROBERT WHARTON, THOMAS FANNEY,
JOHN HEMPHILL, ANDREW WHITE, AND WILLIAM PLATT,
DIRECTORS OF THE COMPANY.

SECRETARY AND TREASURER HENRY GILSON,
ENGINEER IN CHIEF, SENIUS W. GILSON,
ENGINEER IN CHARGE OF THE LOCKS,
SUPERVISOR OF THE CANAL.

OLD LOCK PUMP HOUSE NHL
CHESAPEAKE CITY, MARYLAND
CREDIT: DACITA de la CRUZ

APRIL 1985

NORTH ELEVATION - WEST ENGINE BUILDING
DETAIL

#4 ON INVENTORY

PHOTO 11 OF 19



OLD LOCK PUMP HOUSE NHIL

CHESAPEAKE CITY, MARYLAND

CREDIT: PACITA de la CRUZ

APRIL 1985

NORTH ELEVATION - BOILER HOUSE

#2 ON INVENTORY SHEET

PHOTO 12 OF 19



OLD LOCK PUMP HOUSE NHL
CHEESAPEAKE CITY, MARYLAND

CREDIT: FACITA 6 12 CRUE

APRIL, 1985

EAST SIDE - WHEEL HOUSE
LIFT WHEEL HUB AND DISCHARGE PORT
VISIBLE BEHIND GLASS

#4 ON INVENTORY SHEET

PHOTO 13 OF 19



OLD LOCK PUMP HOUSE NATIONAL HISTORIC LANDMARK
CHESAPEAKE CITY, MARYLAND

CREDIT: PACITA T. de la CRUZ
NATIONAL PARK SERVICE

APRIL, 1985

EAST ELEVATION OF WHEEL HOUSE

FRAMED GLASS WINDOWS - DETAIL

NOTE LIFT WHEEL HUB BEHIND GLASS

#4 ON INVENTORY SHEET

PHOTO 14 OF 19



OLD LOCK PUMP HOUSE
CHESAPEAKE CITY, MARYLAND

CREDIT: PACITA T. de la CRUZ
APRIL, 1985

EAST / SOUTH ELEVATION

THE OLD STEAM HOUSE (ORIGINAL PUMP HOUSE)
APRIL, 1985

1 ON INVENTORY SHEET

PHOTO 15 OF 19



OLD LOCK PUMP HOUSE NHL

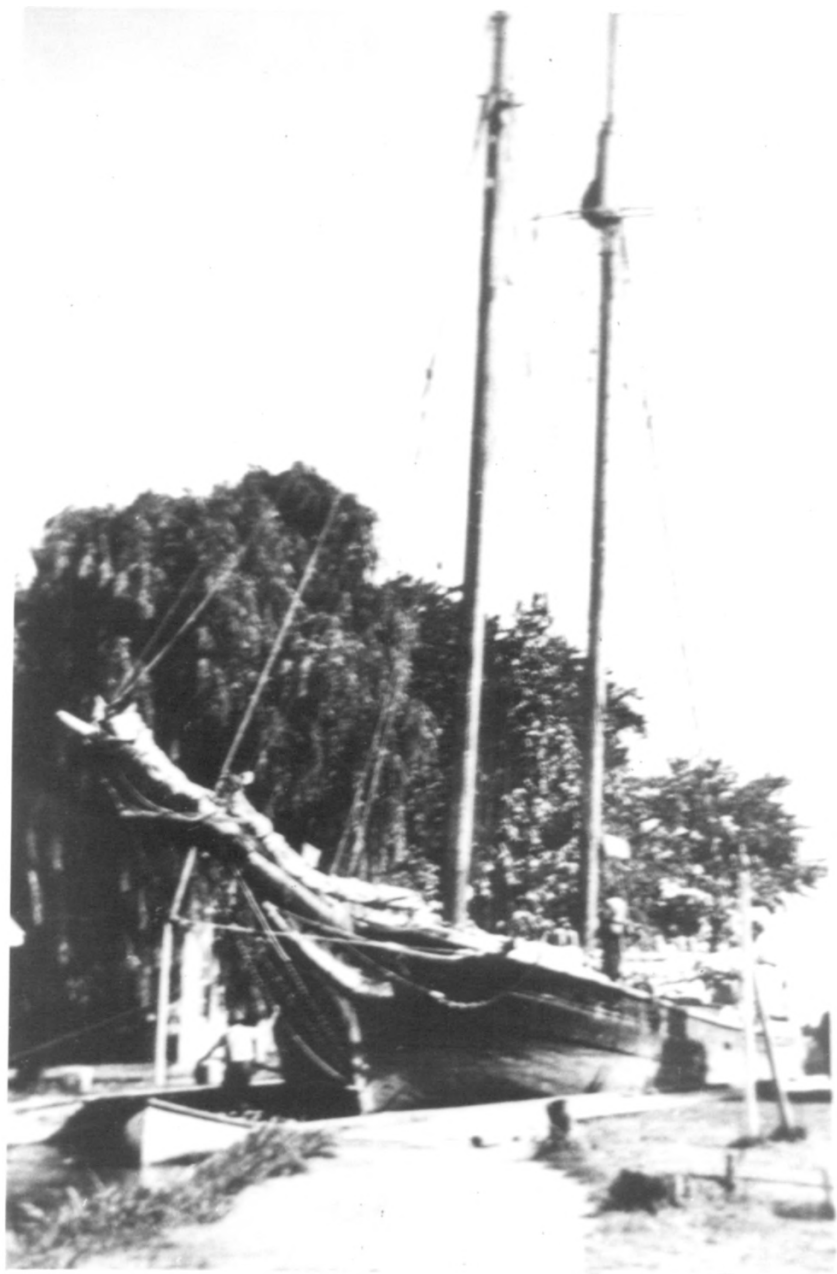
CHESAPEAKE CITY, MARYLAND

CREDIT: PACITA T. de la CRUZ

APRIL, 1985

BIRD'S EYE VIEW - 19th CENTURY LAYOUT OF COMPLEX
ORIGINAL PAINTING IN MUSEUM - (BOILER HOUSE)

PHOTO 16 OF 19



OLD LOCK PUMP HOUSE XIHL

CHESAPEAKE CITY, MARYLAND

CREDIT: PACITA T. de la CRUZ

APRIL, 1985

COPY OF PHOTOGRAPH (ON EXHIBIT
IN MUSEUM)

OF SLOOP IN LOCK, C. 19th CENTURY.

PHOTO 17 OF 19



Station at Chesapeake City, with race in foreground

OLD LOCK PUMP HOUSE NHL
CHESAPEAKE CITY, MARYLAND

CREDIT: PACITA de la CRUZ

APRIL, 1985

COPY OF PHOTOGRAPH ON EXHIBIT IN MUSEUM.

NORTH ELEVATION OF COMPLEX
19TH CENTURY

RACE WAY IN FOREGROUND

PHOTO 18 OF 19



The "Lord Baltimore" exiting through the west entrance of the Chesapeake City lock

OLD LOCK PUMP HOUSE NHL
CHESAPEAKE CITY, MARYLAND

APRIL, 1985

CREDIT: PACITA T. de la CRUZ

COPY OF PHOTOGRAPH ON EXHIBIT IN MUSEUM
19TH CENTURY

PHOTO 19 OF 19