



Set from Irvine Museum

Irvine Bean and Grain Growers Association
Building, 14972 Sand Canyon Avenue
Irvine, California Orange County

Taken: 1980

Photographer: Judy Liebeck

Negatives: Irvine Historical Society

Building from track side looking southeast.



Set from Irvine Museum

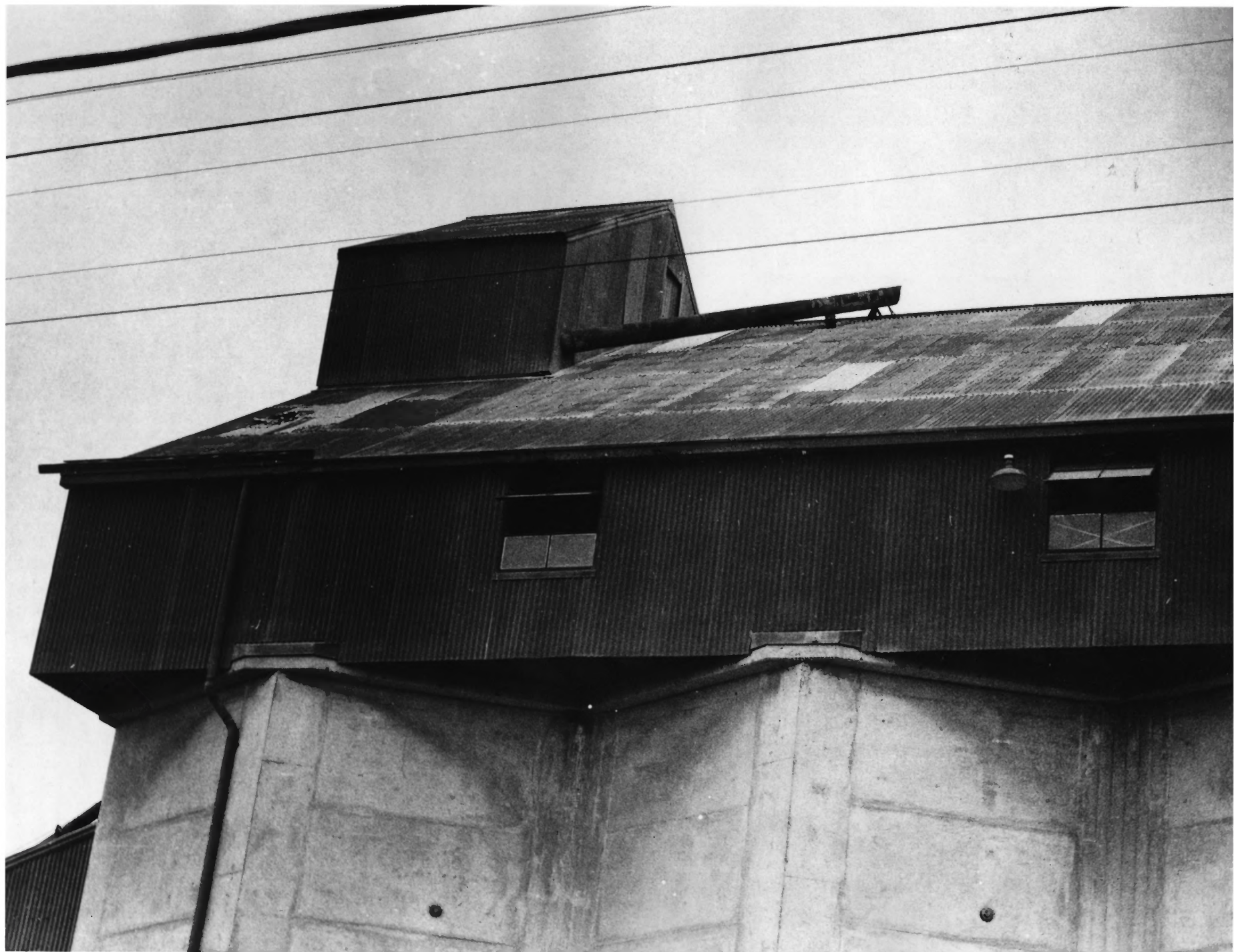
Irvine Bean and Grain Growers Association
Building, 14972 Sand Canyon Avenue
Irvine, California Orange County

Taken: 1980

Photographer: Judy Liebeck

Negatives: Irvine Historical Society

Building from north with tracks on right.



Set from Irvine Museum

Irvine Bean and Grain Growers Association
Building, 14972 Sand Canyon Avenue
Irvine, California Orange County

Taken: 1980

Photographer: Judy Liebeck

Negatives: Irvine Historical Society

North end of building from track side shows
details of top section.



Set from Irvine Museum

Irvine Bean and Grain Growers Association
Building, 14972 Sand Canyon Avenue
Irvine, California Orange County

Taken: 1980

Photographer: Judy Liebeck

Negatives: Irvine Historical Society

Building from southeast corner shows details
of concrete construction.



Set from Irvine Museum

Irvine Bean and Grain Growers Association
Building, 14972 Sand Canyon Avenue
Irvine, California Orange County

Taken: 1980

Photographer: Judy Liebeck

Negatives: Irvine Historical Society

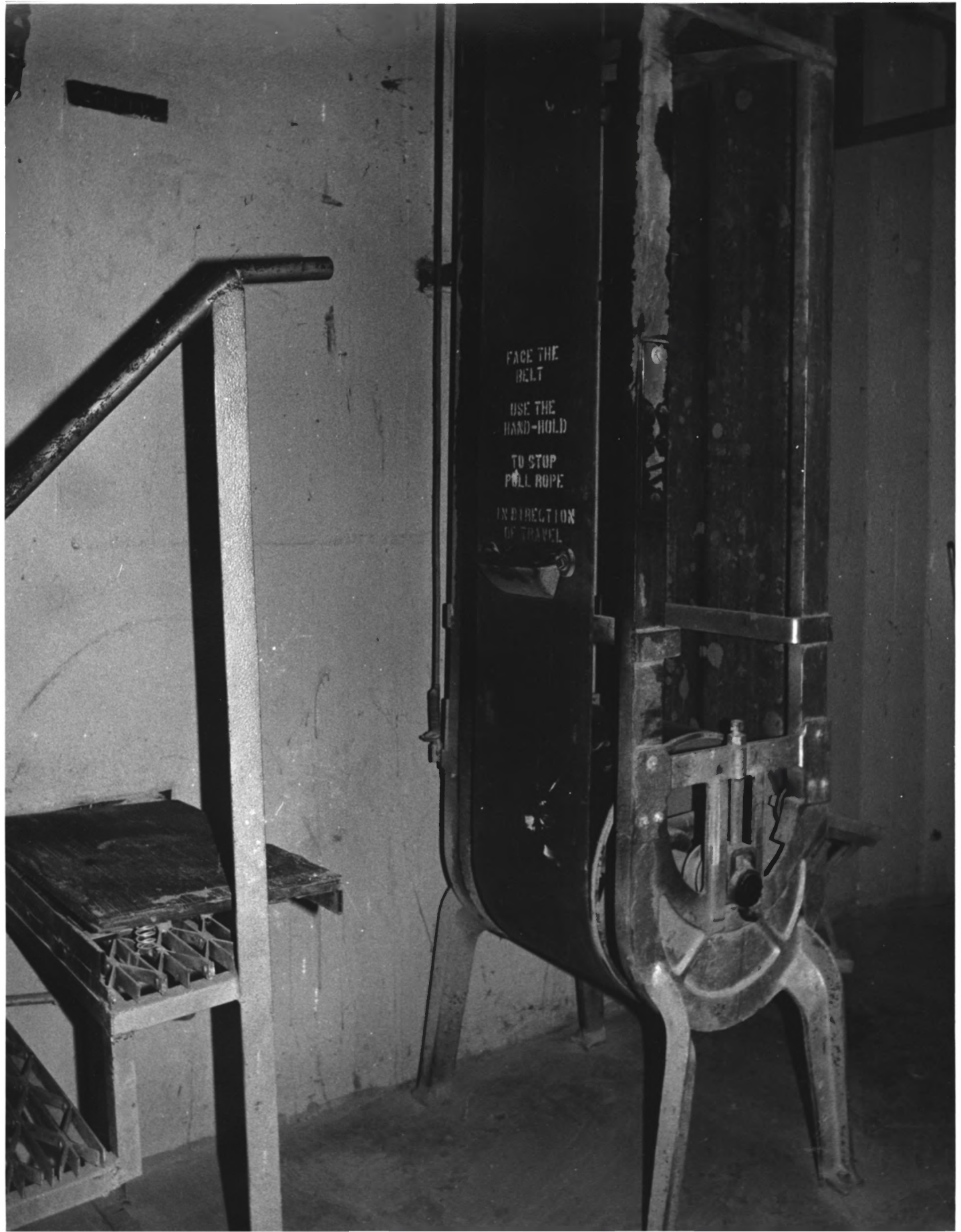
Interior of top floor headhouse, looking
south. Bins are located on each side of
the catwalk.

FACE THE
BELT

USE THE
HAND-HOLD

TO STOP
PULL ROPE

IN DIRECTION
OF TRAVEL



Set from Irvine Museum

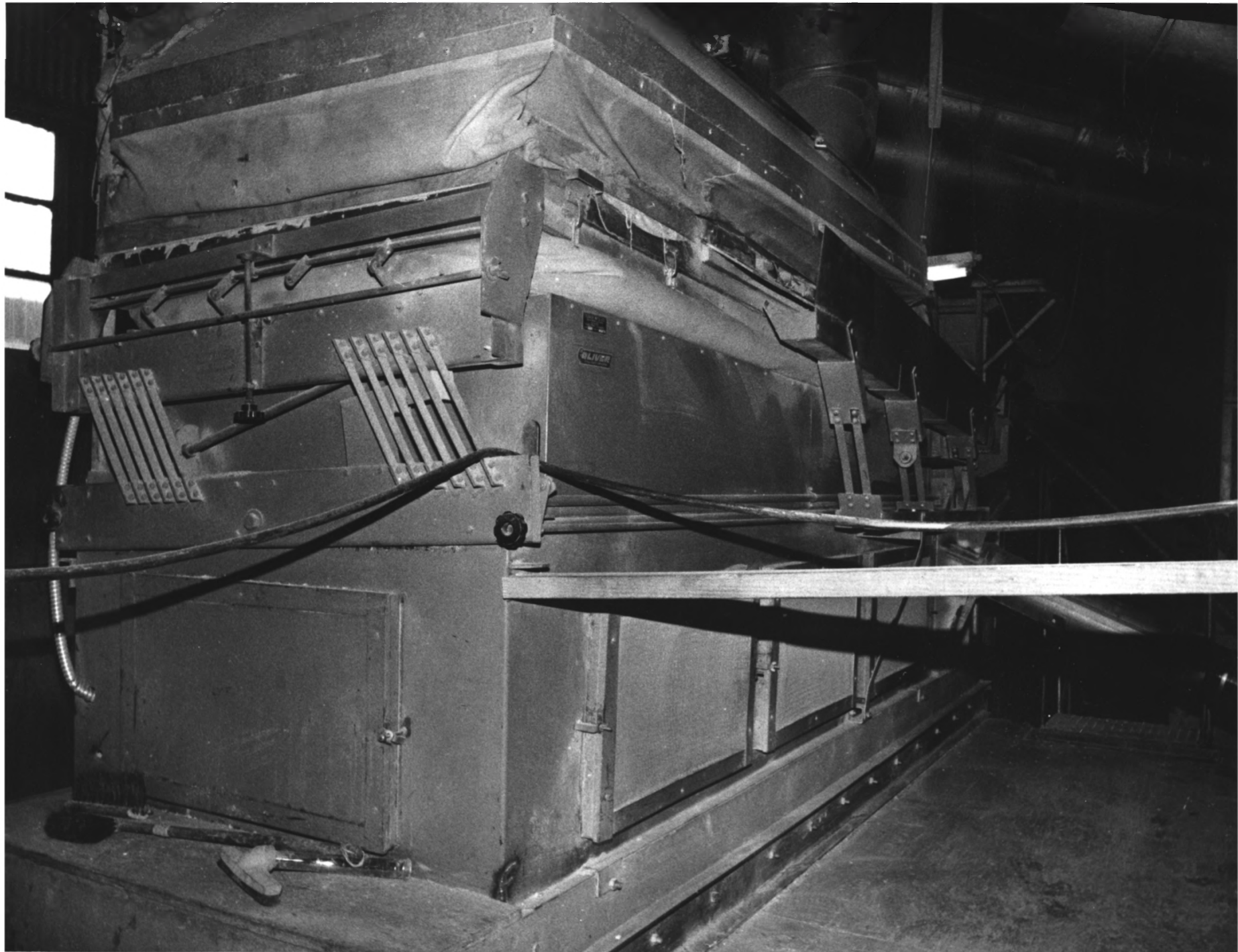
Irvine Bean and Grain Growers Association
Building, 14972 Sand Canyon Avenue
Irvine, California Orange County

Taken: 1980

Photographer: Judy Liebeck

Negatives: Irvine Historical Society

Elevator near northern end of granary leads
to catwalk above the hexagonal bins.



Set from Irvine Museum

Irvine Bean and Grain Growers Association
Building, 14972 Sand Canyon Avenue
Irvine, California Orange County

Taken: 1980

Photographer: Judy Liebeck

Negatives: Irvine Historical Society

Machinery in headhouse, northern end.



Set from Irvine Museum

Irvine Bean and Grain Growers Association
Buidling, 14972 Sand Canyon Avenue
Irvine, California Orange County

Taken: 1980

Photographer: Judy Liebeck

Negatives: Irvine Historical Society

Bins along walls in basement.



Set from Robert Smith

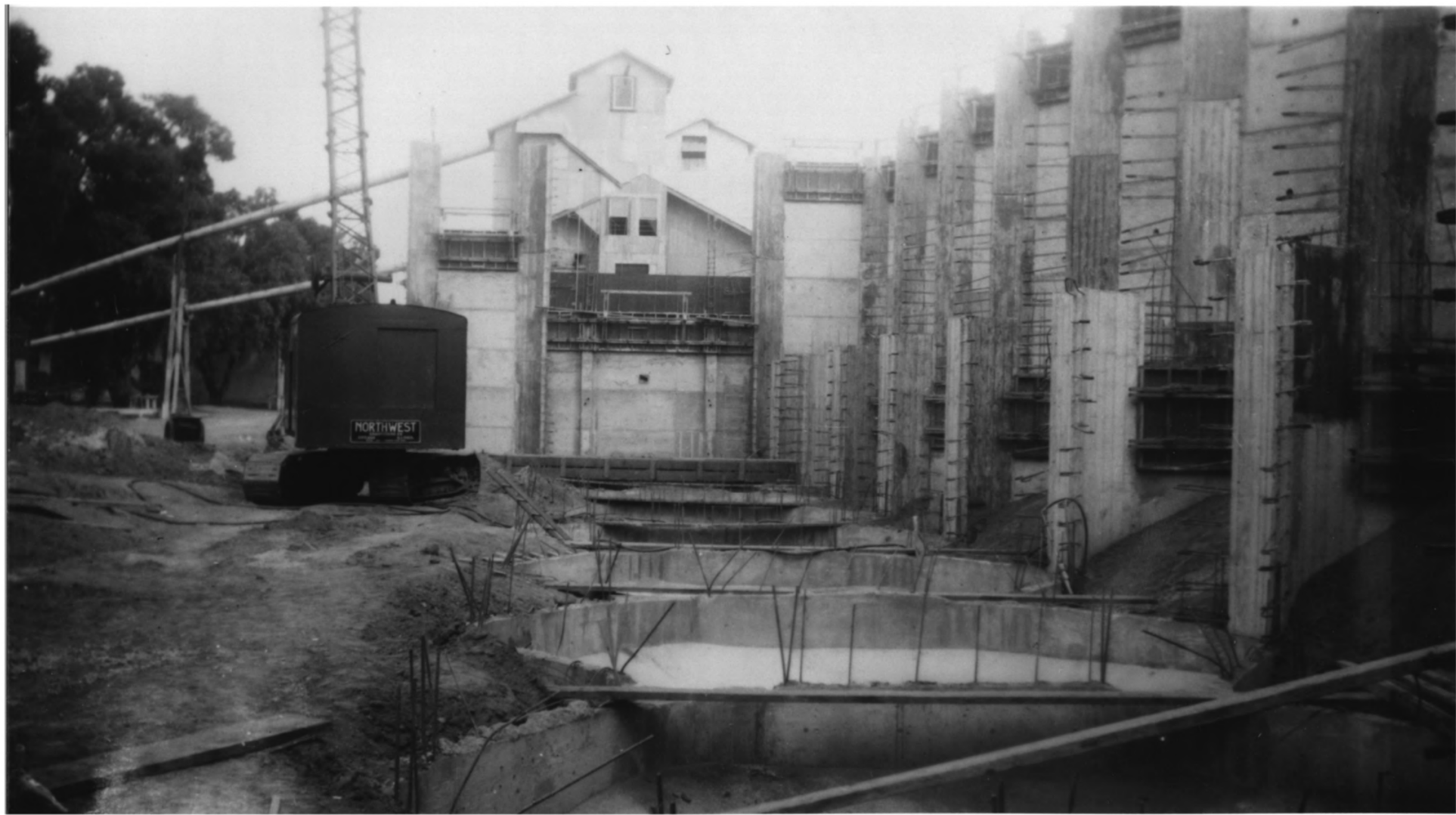
Irvine Bean and Grain Growers Association
Building, 14972 Sand Canyon Avenue
Irvine, California Orange County

Taken: 1947

Photographer: John Steinbrugge

Negatives: J. Ray Construction
2699 White Road, Ste. 150
Irvine, Calif. 92714

View during construction looking west.



Set from Robert Smith

Irvine Bean and Grain Growers Association
Building, 14972 Sand Canyon Avenue
Irvine, California Orange County

Taken: 1947

Photographer: John Steinbrugge

Negatives: J. Ray Construction
2699 White Road, Ste. 150
Irvine, Calif. 92714

View during construction looking east.

No. 10 of 13



Set from Robert Smith

Irvine Bean and Grain Growers Association
Building, 14972 Sand Canyon Avenue
Irvine, California Orange County

Taken: 1947

Photographer: John Steinbrugge

Negatives: J. Ray Construction
2699 White Road, Ste. 150
Irvine, Calif. 92714

View at top of silos prior to headhouse
construction.

No. 11 of 13



Set from Robert Smith

Irvine Bean and Grain Growers Association
Building, 14972 Sand Canyon Avenue
Irvine, California Orange County

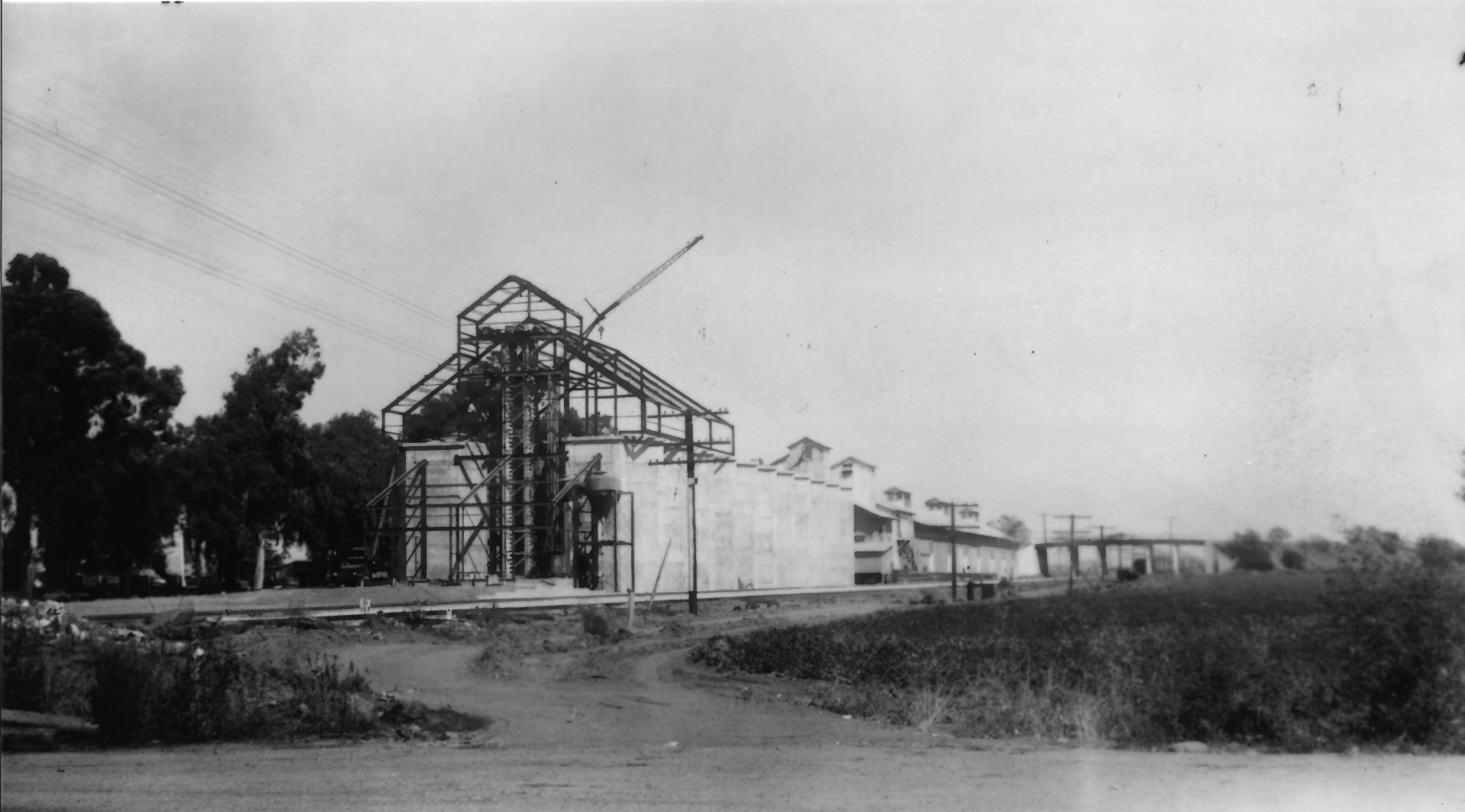
Taken: 1947

Photographer: John Steinbrugge

Negatives: J. Ray Construction
2699 White Road, Ste. 150
Irvine, Calif. 92714

View looking east during construction.

No. 12 of 13



Set from Robert Smith

Irvine Bean and Grain Growers Association
Building, 14972 Sand Canyon Avenue
Irvine, California Orange County

Taken: 1947

Photographer: John Steinbrugge

Negatives: J. Ray Construction
2699 White Road, Ste. 150
Irvine, Calif. 92714

View looking east during construction.
Start of headhouse construction.

No. 13 of 13



No. 1 of 18

IRVINE BEAN AND GROWERS ASSOCIATION BUILDING
EAST IRVINE, ORANGE COUNTY CALIFORNIA

Photographer: Diann Marsh

Date: 11/83

Negatives: Thirtieth Street Architects, Inc.
2821 Newport Blvd.
Newport Beach, Ca. 92663

West side of central processing section. Taken
from Northwest.



No. 2 of 18

IRVINE BEAN AND GROWERS ASSOCIATION BUILDING
EAST IRVINE, ORANGE COUNTY CALIFORNIA

Photographer: Diann Marsh

Date: 11/83

Negatives: Thirtieth Street Architects, Inc.
2821 Newport Blvd.
Newport Beach, Ca. 92663

West side of central processing section. Taken
from Northwest.



No. 3 of 18

IRVINE BEAN AND GROWERS ASSOCIATION BUILDING
EAST IRVINE, ORANGE COUNTY CALIFORNIA

Photographer: Diann Marsh

Date: 11/83

Negatives: Thirtieth Street Architects, Inc.
2821 Newport Blvd.
Newport Beach, Ca. 92663

Western side of processing section at point
where buildings connect.



No. 4 of 18

IRVINE BEAN AND GROWERS ASSOCIATION BUILDING
EAST IRVINE, ORANGE COUNTY CALIFORNIA

Photographer: Diann Marsh

Date: 11/83

Negatives: Thirtieth Street Architects, Inc.
2821 Newport Blvd.
Newport Beach, Ca. 92663

Central processing section. Note towers and
catwalk, original windows.



No. 5 of 18

IRVINE BEAN AND GROWERS ASSOCIATION BUILDING
EAST IRVINE, ORANGE COUNTY CALIFORNIA

Photographer: Diann Marsh

Date: 11/83

Negatives: Thirtieth Street Architects, Inc.
2821 Newport Blvd.
Newport Beach, Ca. 92663

Center section of processing section looking
to Northeast from West side.



No. 6 of 18

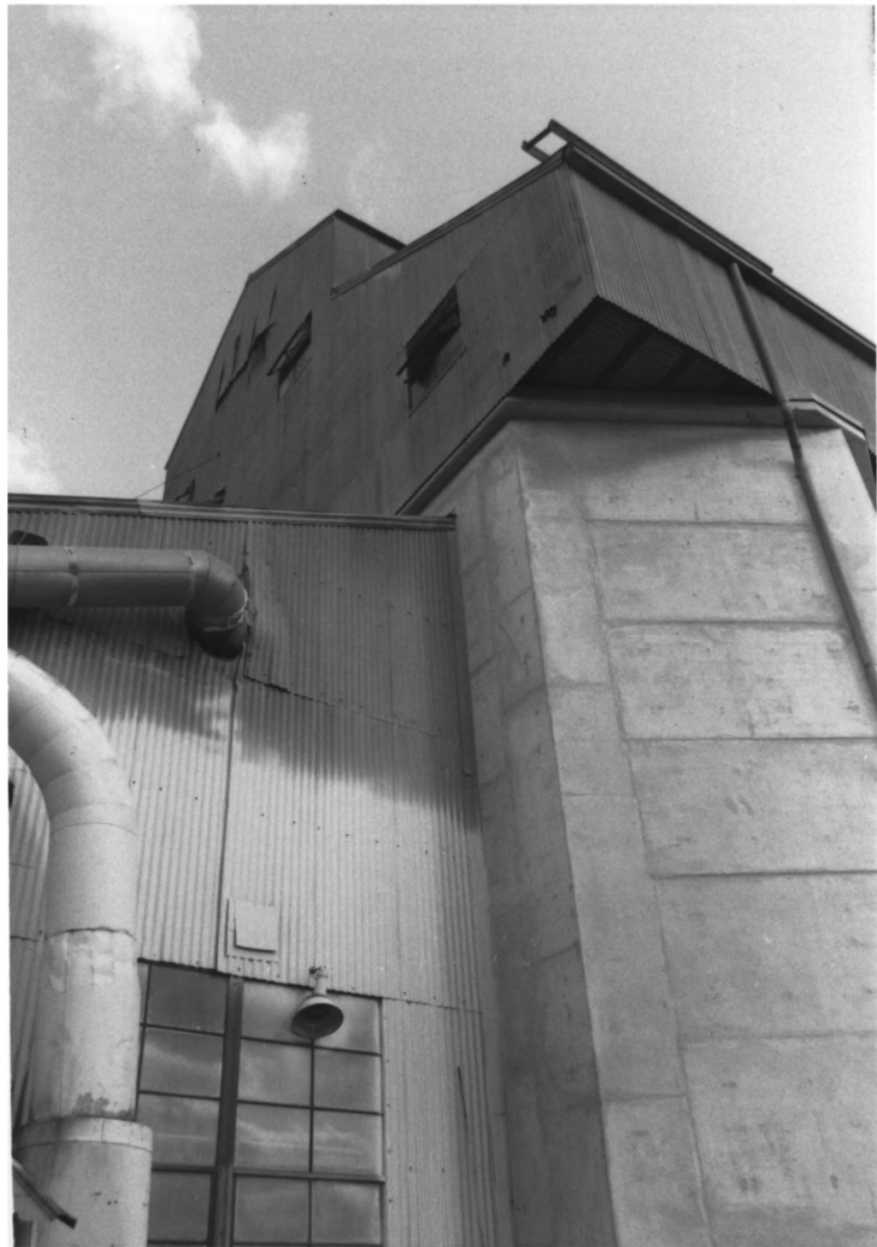
IRVINE BEAN AND GROWERS ASSOCIATION BUILDING
EAST IRVINE, ORANGE COUNTY CALIFORNIA

Photographer: Diann Marsh

Date: 11/83

Negatives: Thirtieth Street Architects, Inc.
2821 Newport Blvd.
Newport Beach, Ca. 92663

Concrete silos of grain elevators on West side
(East side the same).



No. 7 of 18

IRVINE BEAN AND GROWERS ASSOCIATION BUILDING
EAST IRVINE, ORANGE COUNTY CALIFORNIA

Photographer: Diann Marsh

Date: 11/83

Negatives: Thirtieth Street Architects, Inc.
2821 Newport Blvd.
Newport Beach, Ca. 92663

Front (North-West corner) facade of elevator
addition facing North.



No. 8 of 18

IRVINE BEAN AND GROWERS ASSOCIATION BUILDING
EAST IRVINE, ORANGE COUNTY CALIFORNIA

Photographer: Diann Marsh

Date: 11/83

Negatives: Thirtieth Street Architects, Inc.
2821 Newport Blvd.
Newport Beach, Ca. 92663

North (front) facade of elevators looking
Southeast.



No. 9 of 18

IRVINE BEAN AND GROWERS ASSOCIATION BUILDING
EAST IRVINE, ORANGE COUNTY CALIFORNIA

Photographer: Diann Marsh

Date: 11/83

Negatives: Thirtieth Street Architects, Inc.
2821 Newport Blvd.
Newport Beach, Ca. 92663

East side of warehouse section (Southern end),
facing yard.



No. 10 of 18

IRVINE BEAN AND GROWERS ASSOCIATION BUILDING
EAST IRVINE, ORANGE COUNTY CALIFORNIA

Photographer: Diann Marsh

Date: 11/83

Negatives: Thirtieth Street Architects, Inc.
2821 Newport Blvd.
Newport Beach, Ca. 92663

East side of warehouse section. Covered
dock opens onto yard.



No. 11 of 18

IRVINE BEAN AND GROWERS ASSOCIATION BUILDING
EAST IRVINE, ORANGE COUNTY CALIFORNIA

Photographer: Diann Marsh

Date: 11/83

Negatives: Thirtieth Street Architects, Inc.
2821 Newport Blvd.
Newport Beach, Ca. 92663

The eastern receiving dock on the east side of
the warehouse section, looking North.



No. 12 of 18

IRVINE BEAN AND GROWERS ASSOCIATION BUILDING
EAST IRVINE, ORANGE COUNTY CALIFORNIA

Photographer: Diann Marsh

Date: 11/83

Negatives: Thirtieth Street Architects, Inc.
2821 Newport Blvd.
Newport Beach, Ca. 92663

West side of warehouse and processing section:
Loading dock along West side of building.



No. 13 of 18

IRVINE BEAN AND GROWERS ASSOCIATION BUILDING
EAST IRVINE, ORANGE COUNTY CALIFORNIA

Photographer: Diann Marsh

Date: 11/83

Negatives: Thirtieth Street Architects, Inc.
2821 Newport Blvd.
Newport Beach, Ca. 92663

West side of warehouse section and loading
dock.



No. 14 of 18

IRVINE BEAN AND GROWERS ASSOCIATION BUILDING
EAST IRVINE, ORANGE COUNTY CALIFORNIA

Photographer: Diann Marsh

Date: 11/83

Negatives: Thirtieth Street Architects, Inc.
2821 Newport Blvd.
Newport Beach, Ca. 92663

West side of warehouse section from Southwest
corner. Shows length of building.



No. 15 of 18

IRVINE BEAN AND GROWERS ASSOCIATION BUILDING
EAST IRVINE, ORANGE COUNTY CALIFORNIA

Photographer: Diann Marsh

Date: 11/83

Negatives: Thirtieth Street Architects, Inc.
2821 Newport Blvd.
Newport Beach, Ca. 92663

Wing on South end of warehouse, attached by
passthrough on North end.



No. 16 of 18

IRVINE BEAN AND GROWERS ASSOCIATION BUILDING
EAST IRVINE, ORANGE COUNTY CALIFORNIA

Photographer: Diann Marsh

Date: 11/83

Negatives: Thirtieth Street Architects, Inc.
2821 Newport Blvd.
Newport Beach, Ca. 92663

Interior of warehouse section, looking South.



No. 17 of 18

IRVINE BEAN AND GROWERS ASSOCIATION BUILDING
EAST IRVINE, ORANGE COUNTY CALIFORNIA

Photographer: Diann Marsh

Date: 11/83

Negatives: Thirtieth Street Architects, Inc.
2821 Newport Blvd.
Newport Beach, Ca. 92663

Interior roof structure of warehouse.



No. 18 of 18

IRVINE BEAN AND GROWERS ASSOCIATION BUILDING
EAST IRVINE, ORANGE COUNTY CALIFORNIA

Photographer: Diann Marsh

Date: 11/83

Negatives: Thirtieth Street Architects, Inc.
2821 Newport Blvd.
Newport Beach, Ca. 92663

Rural view to West from interior of warehouse.
To East is freeway, Irvine City on South,
East and North.