



Calumet Hotel
620 SW Park Avenue
Portland, Multnomah Co. Oregon
1 of 17

Oregon Historical Society photo c. 1907
1230 SW Park Avenue
Portland, Oregon 97205

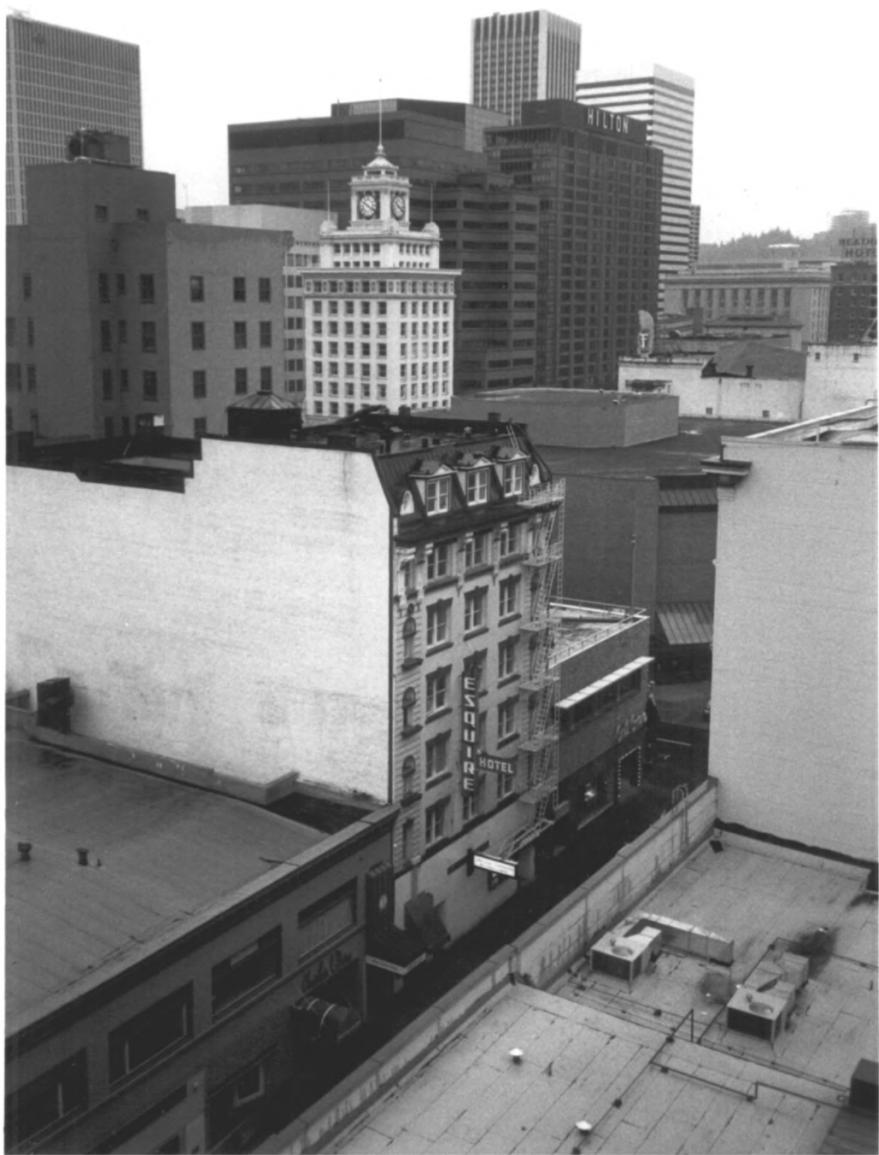
Historic photo, West elevation



Calumet Hotel
620 SW Park Avenue
Portland, Multnomah Co., Oregon
2 of 17

Oregon Historical Society photo, n.d.
1230 SW Park Avenue
Portland, Oregon 97205

Historic photo, Calumet on extreme
right.



Calumet Hotel
620 SW Park Avenue
Portland, Multnomah Co., Oregon
3 of 17

Heritage Investment photo, 1983
813 Southwest Alder, Suite 800
Portland, Oregon 97205

View from northwest.



Calumet Hotel
620 SW Park Avenue
Portland, Multnomah Co., Oregon
4 of 17

Heritage Investment photo, 1983
813 Southwest Alder, Suite 800
Portland, Oregon 97205

West (front) elevation.



Calumet Hotel
620 SW Park Avenue
Portland, Multnomah Co., Oregon
5 of 17

Heritage Investment photo, 1983
813 Southwest Alder, Suite 800
Portland, Oregon 97205

West (front) elevation.



Calumet Hotel
620 SW Park Avenue
Portland, Multnomah Co., Oregon
6 of 17

Heritage Investment photo, 1983
813 Southwest Alder, Suite 800
Portland, Oregon 97205

Detail upper floors of west elevation.



Calumet Hotel
620 SW Park Avenue
Portland, Multnomah Co., Oregon
7 of 17

Heritage Investment photo, 1983
813 Southwest Alder, Suite 800
Portland, Oregon 97205

Detail of base, West elevation



Calumet Hotel
620 SW Park Avenue
Portland, Multnomah Co., Oregon
8 of 17

Heritage Investment photo, 1983
813 Southwest Alder, Suite 800
Portland, Oregon 97205

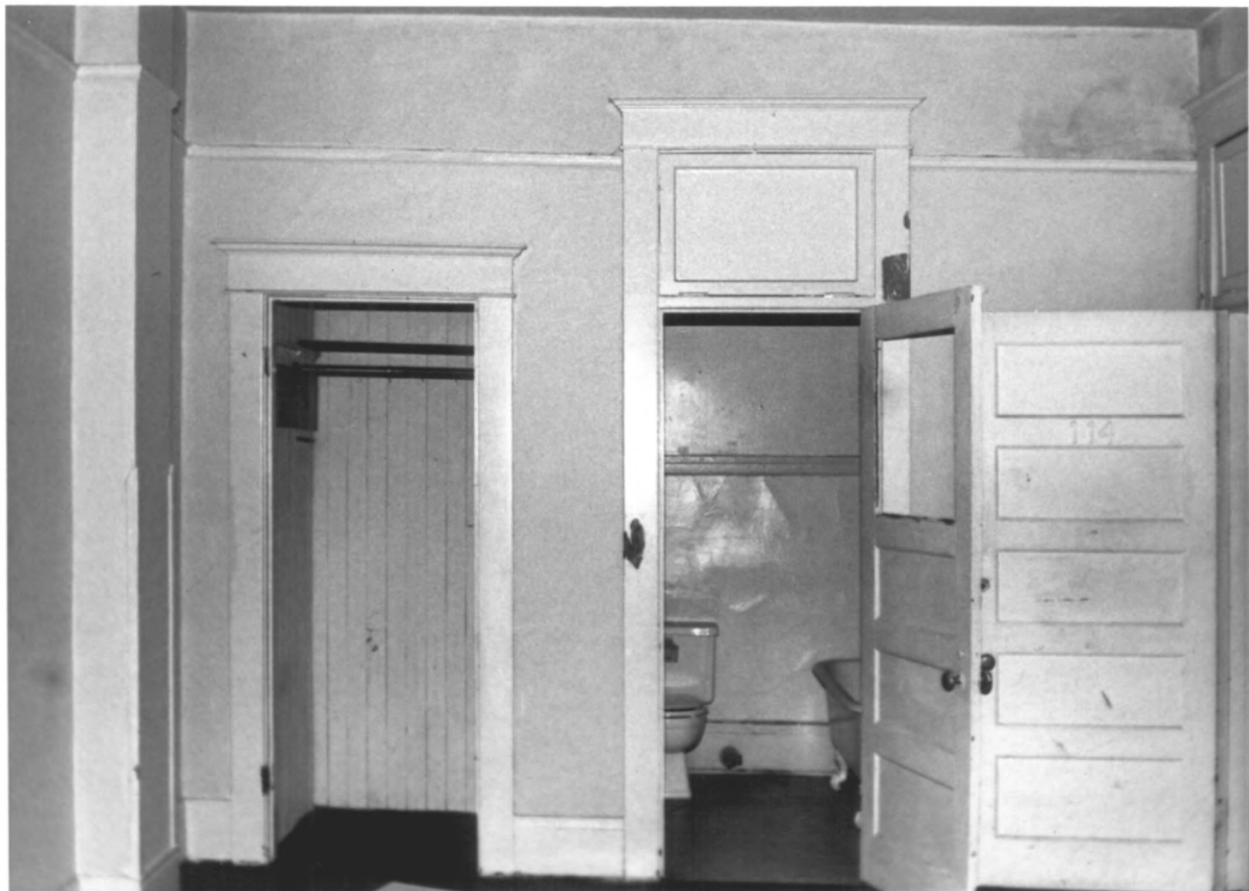
Lobby & mezzanine, showing cast-iron
stair and wrought iron railing



Calumet Hotel
620 SW Park Avenue
Portland, Multnomah Co., Oregon
9 of 17

Heritage Investment photo, 1983
813 Southwest Alder, Suite 800
Portland, Oregon 97205

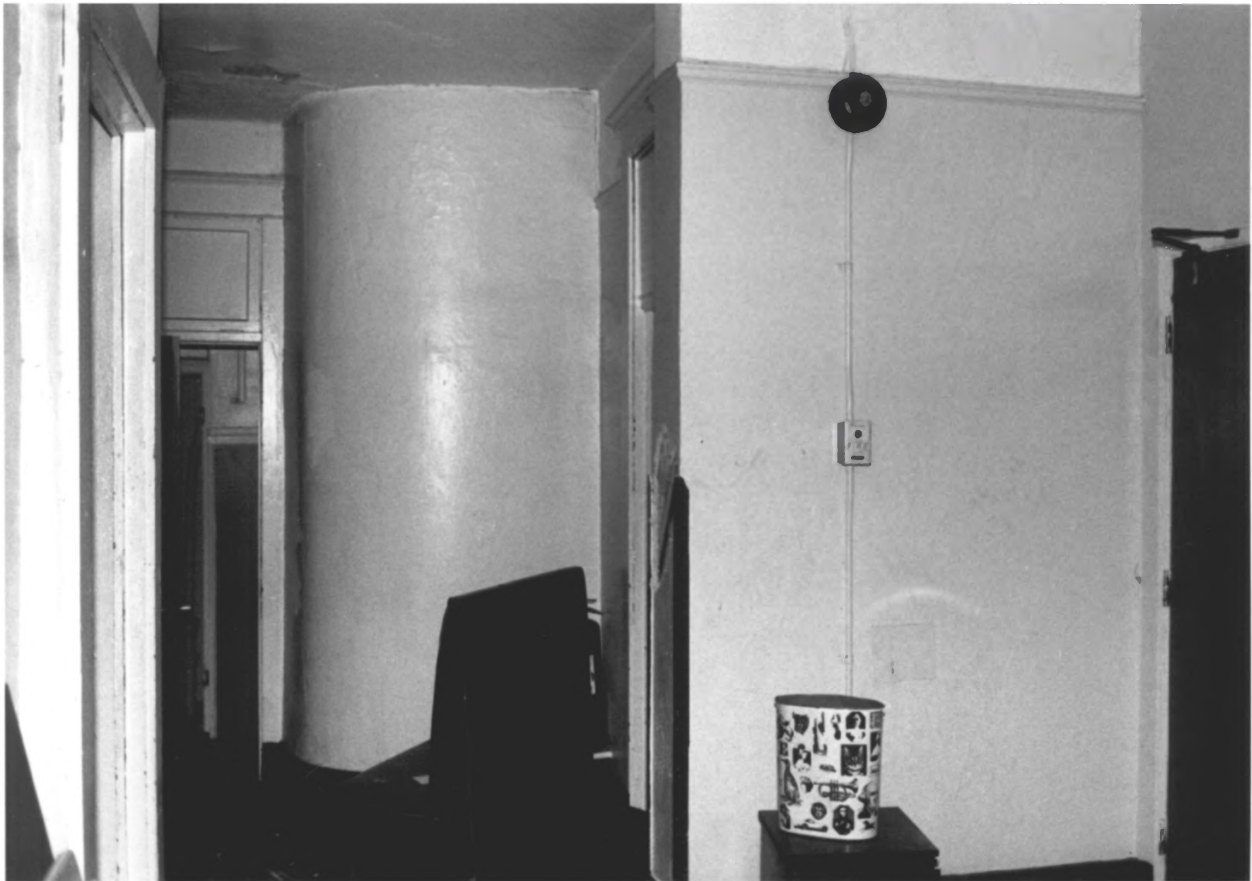
Second floor elevator lobby



Calumet Hotel
620 SW Park Avenue
Portland, Multnomah Co., Oregon
10 of 17

Heritage Investment photo, 1983
813 Southwest Alder, Suite 800
Portland, Oregon 97205

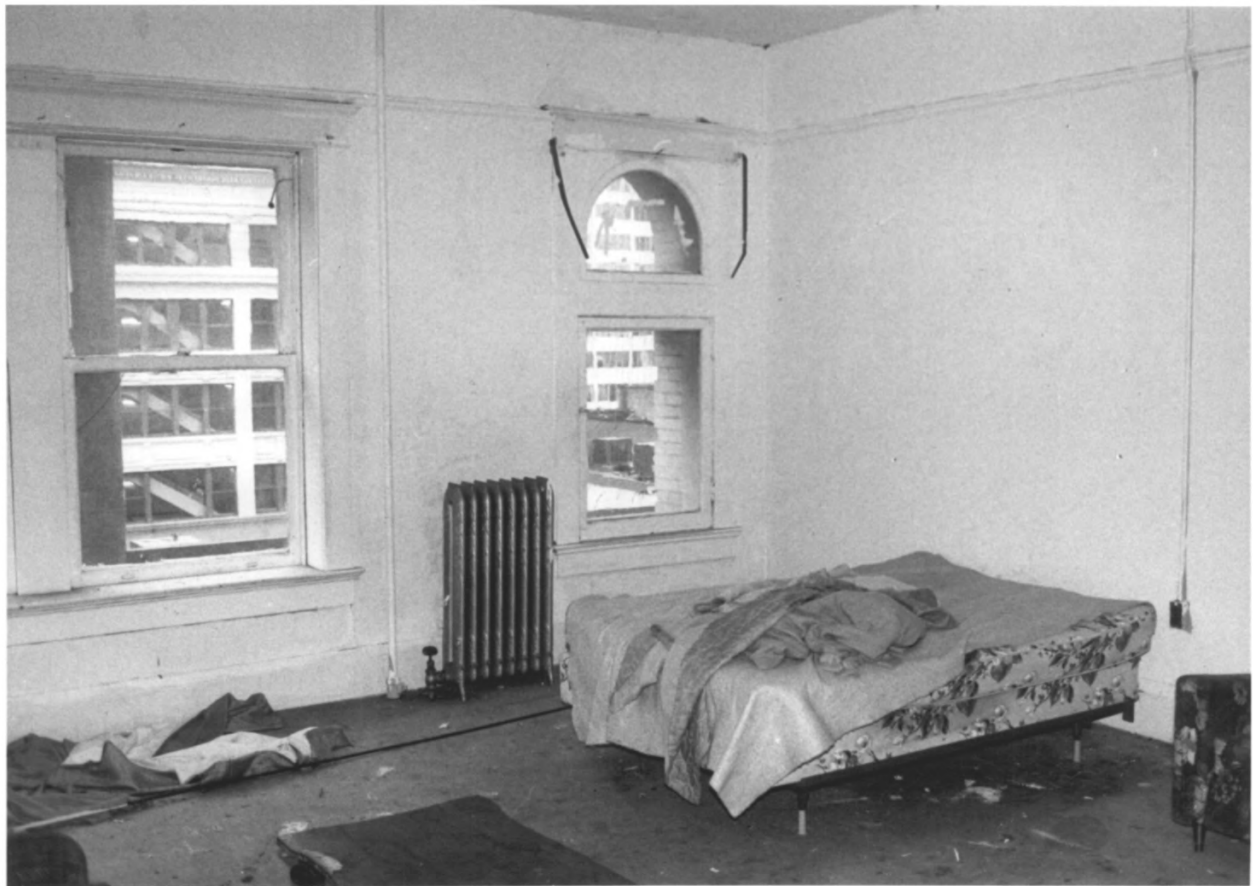
Rooms facing Park Avenue,
Typical detailing



Calumet Hotel
620 SW Park Avenue
Portland, Multnomah Co., Oregon
11 of 17

Heritage Investment photo, 1983
813 Southwest Alder, Suite 800
Portland, Oregon 97205

Elevator lobby, 3rd through 5th floors



Calumet Hotel
620 SW Park Avenue
Portland, Multnomah Co., Oregon
12 of 17

Heritage Investment photo, 1983
813 Southwest Alder, Suite 800
Portland, Oregon 97205

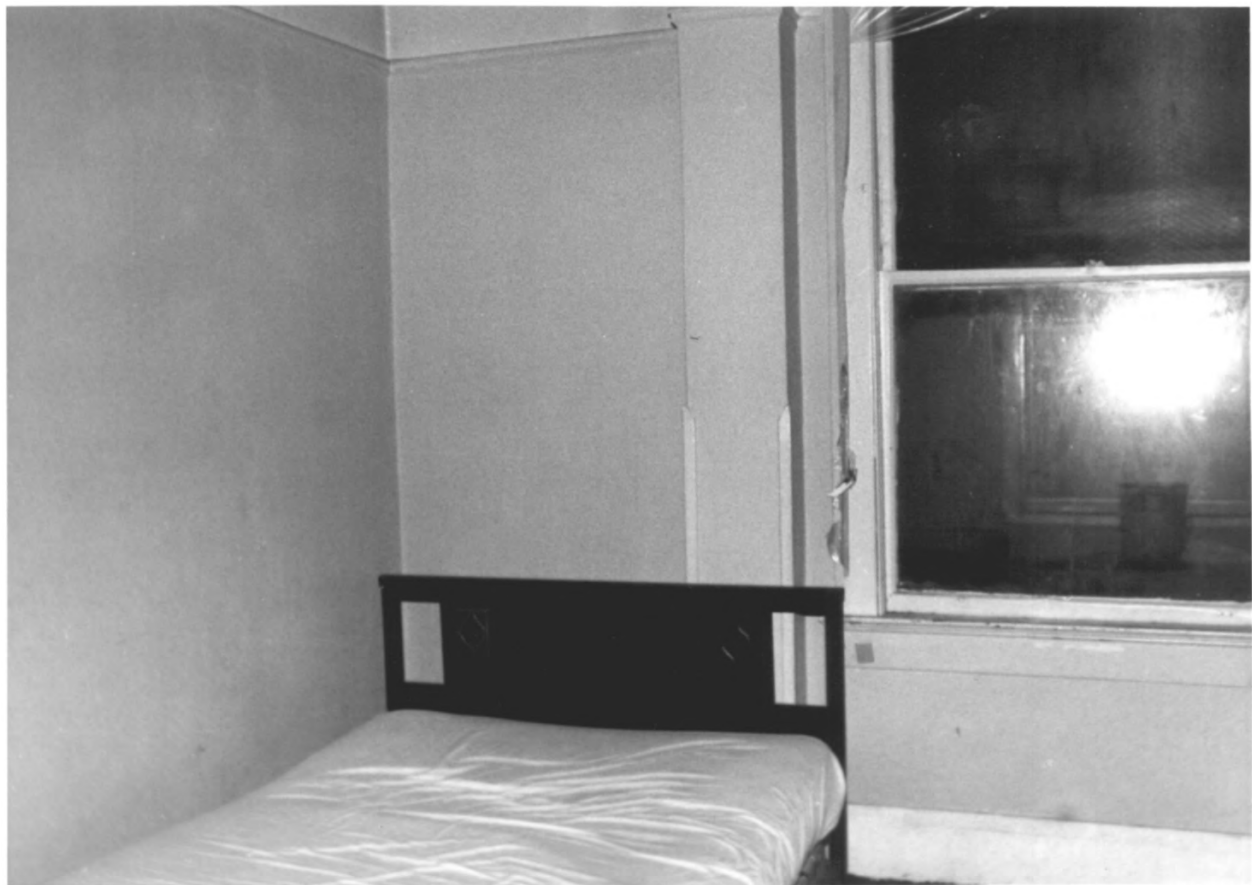
Rooms facing Park Avenue,
Typical detailing



Calumet Hotel
620 SW Park Avenue
Portland, Multnomah Co., Oregon
13 of 17

Heritage Investment photo, 1983
813 Southwest Alder, Suite 800
Portland, Oregon 97205

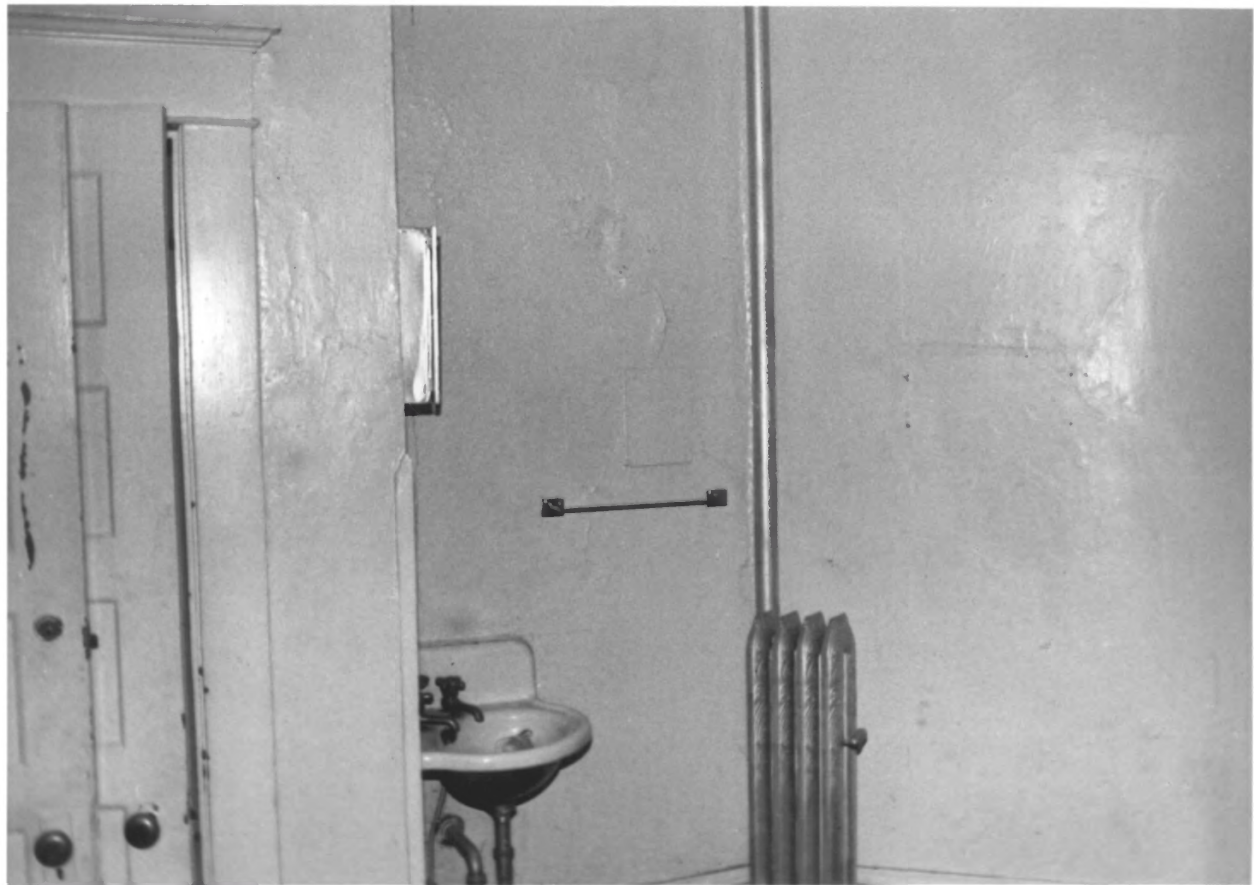
Typical hallway, 2nd through 5th floors



Calumet Hotel
620 SW Park Avenue
Portland, Multnomah Co., Oregon
14 of 17

Heritage Investment photo, 1983
813 Southwest Alder, Suite 800
Portland, Oregon 97205

Typical room facing light court,
2nd through 5th floors



Calumet Hotel
620 SW Park Avenue
Portland, Multnomah Co., Oregon
15 of 17

Heritage Investment photo, 1983
813 Southwest Alder, Suite 800
Portland, Oregon 97205

Typical room facing light court,
2nd through 5th floors



Calumet Hotel
620 SW Park Avenue
Portland, Multnomah Co., Oregon
16 of 17

Heritage Investment photo, 1983
813 Southwest Alder, Suite 800
Portland, Oregon 97205

Detail of penthouse



Calumet Hotel
620 SW Park Avenue
Portland, Multnomah Co., Oregon
17 of 17

Heritage Investment photo, 1983
813 Southwest Alder, Suite 800
Portland, Oregon 97205

Interior light court