

ENNETT 1922

ENNIS & BENTZ REALTY

SPRINGVILLE PHARMACY

ENNIS & BENTZ

WE'RE OPEN

Springville Pharmacy

1. C.A. Elster Building
2. S. E. corner of Highway 190 and Tule River Drive, Springville Tulare County CA
3. Kathleen Les
4. 2/26/81
5. 206 W. 4th St. #316 Santa Ana CA
6. Front View of Business Block from Highway 190
7. 1 of 4 photographs

FEB 8 1982



ENNIS & BENTZ REALTY

SPRINGVILLE PHARMACY

ENNIS & BENTZ

WE'RE

Open

St. Patrick's Day Cards

1. C.A. Elster Building
2. SE Corner of Highway 190 and Tule River Drive, Springville, Tulare County CA
3. Kathleen Les
4. 2/26/81
5. 206 W. 4th St #316 Santa Ana CA
6. Front detail view of business block from Highway 190 photographer facing south
7. 2 of 4 photographs

FEB 8 1982



SPRINGVILLE

PHARMACY    E-S REALTY    BOOKKEEPING  
ARCHITECT    VARIETY

BANKING → H →

R  
J  
R

1. C.A. Elster Building
2. SE corner of Highway 190 and Tule River Drive ,Springville, Tulare County CA
3. Kathleen Les
4. 2/26/81
5. 206 W. 4th St. #316 Santa Ana CA
6. Side view of business block from Tule River Drive. Photographer facing east
7. 3 of 4 photographs

FEB 8 1982

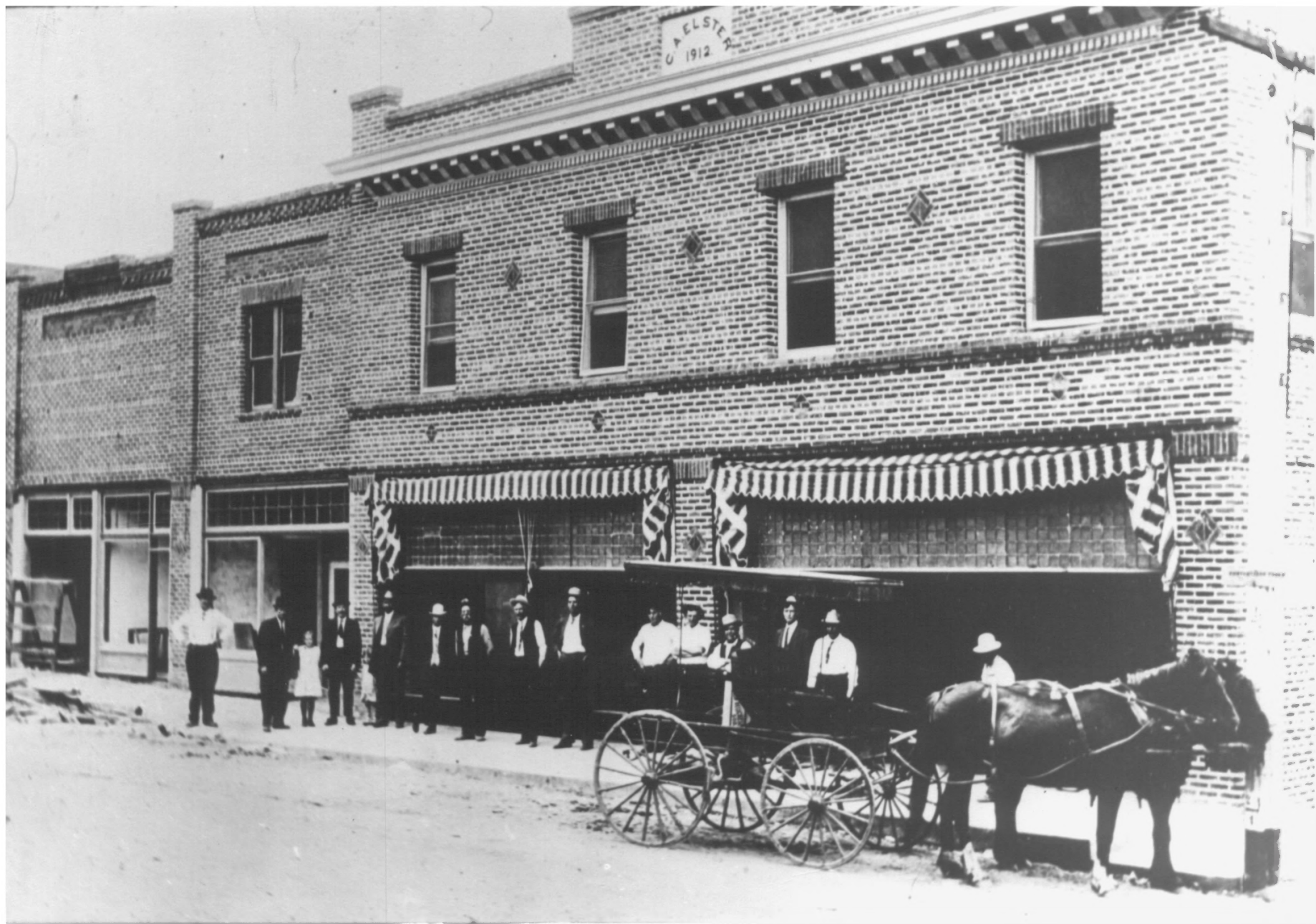




1. C. A. Elster Building
2. SE corner of Highway 190 and Tule River Drive, Springville, Tulare County CA
3. Kathleen Les
4. 2/26/81
5. 206 W. 4th St. #316 Santa Ana CA 92701
6. Rear View of business block from rear parking lot. Photographer facing north
7. 4 of 4 photographs

FEB 8 1982





G. AELSTER  
1912

C.A. Elster Building  
SE corner Highway 190 and Tule River Dr.  
Springville, Tulare County, CA  
Photographer unknown  
negative at 206 W. 4th St. #316 Santa Ana, CA  
1912 opening of west portion  
front facade, facing southeast  
1 of 2 historic photographs

1912 opening of west portion

FEB 8 1982



GAESELE  
1912

W. B. GAESELE  
GENERAL MERCHANDISE

CLAUSEN  
EASTERN BICYCLE ASSOCIATION

(62)

SPRINGVILLE, CAL.

11  
1909

1913 showing Building completed

C.A. Elster Building

SE corner Highway 190 and Tule River Dr.

Springville, Tulare County, CA

Photographer unknown

negative at 206 W. 4th St. #316 Santa Ana, CA

1913 showing completed building

front facade, facing southeast

2 of 2 historic photographs

FEB 8 1962