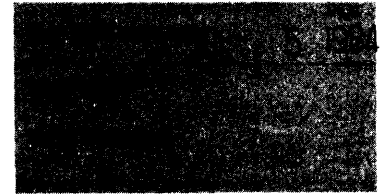


**United States Department of the Interior
National Park Service**

**National Register of Historic Places
Inventory—Nomination Form**

Pulaski County Multiple Resource
Area, Kentucky



Continuation sheet

Item number

Page

South Courthouse Square Historic District

Description

Location: Along West Mt. Vernon, South Main Street, the Public Square, Zachary Way and South Maple Street in Somerset, Kentucky

Owner: Multiple

Classification: District

The South Courthouse Square Historic District is located along the southern boundary of the public square in downtown Somerset, Kentucky. All of the buildings are located facing the Public Square, Zachary Way or Maple Street within one block of the downtown square. The district is located adjacent to the Somerset Commercial Historic District which is centered along E. Mt. Vernon Street. All of the buildings are utilized for commercial or office use. The majority of properties are occupied and there are few vacancies.

The district is composed of ten commercial buildings, nine of which contribute to the character of the district. All of the buildings are two to three stories in height and utilized for commercial businesses. The majority feature Commercial Italianate detailing and were constructed between 1880 and 1910 during Somerset's building boom. While many of the original storefronts have been removed the upper facades still display their original architectural character.

Acreage: approx. 1.7 acres

Verbal Boundary Description: The South Courthouse Square Historic District is designated as lots 5, 6, 7 of block 33, lots 7 through 13 of block 34, and lot 14 of block 35 as shown on Somerset tax maps. The district is defined on all sides by modern or altered structures.

UTM References: A. 16/712540/4107210 B. 16/712725/4107505 C. 16/712815/4107550 D. 16/712778/4107495 E. 16/712885/4107550 F. 16/712895/4107520.

**United States Department of the Interior
National Park Service**

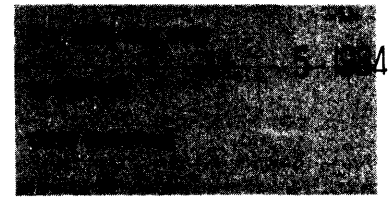
**National Register of Historic Places
Inventory—Nomination Form**

Pulaski County Multiple Resource

Continuation sheet Area, Kentucky

Item number

Page



South Courthouse Square Historic District - Individual Property Descriptions

Properties Contributing to the Character of the District:

1. 103 Mt. Vernon, Goldenburg's. Constructed ca. 1900, this three story brick building has an altered storefront with new display windows. Original details such as cast iron pilasters and a sheet metal cornice are still extant. The brick on the upper facade has been covered with stucco. Windows are paired one-over-one sash with connecting rounded brick arching, stone sills and a sheet metal cornice. The interior has been remodeled on both floors but the original pressed tin ceiling has been preserved.

2. 59 Public Square, Goldenburg's (First National Bank Building). This two-story brick commercial building was constructed ca. 1890 as the Somerset First National Bank Building. The building was occupied by the bank, retail establishments and professional offices. In 1952 the bank was renamed the First and Farmers National Bank which occupied the building until 1963 when it moved into the new building across the street. Since then the building has been used as a furniture store on the ground floor and professional offices on the upper floor. The storefront of the building was added ca. 1905 and features cast iron columns with Ionic capitals and large display windows. The upper facade facing the public square has one-over-one sash windows with transoms and flat lintels. On the Mt. Vernon facade the windows are four-over-four with stone sills and sheet metal hood molding. The interior of the building has been altered into a showroom and offices but the original pressed tin ceiling remains on the first floor.

3. 58 Public Square: The Bank of Somerset is a two-story brick vernacular Romanesque commercial building constructed ca. 1890. While the storefront has been altered with new materials the upper facade still displays its original details. The second story has rounded arch one-over-one sash windows with rusticated brick arching. At the corner is a tower with rusticated brick and a flat roof. At the roofline is a metal cornice with corbelled brickwork below.

4. 101 S. Main Street: The Gibson Building was constructed in 1881 by Robert Gibson a leading Somerset merchant. This two-story brick structure has been altered on the first floor but the upper facade has been restored in recent years. The upper facade has one-over-one sash windows with arched transoms. The arching is well crafted with multi-colored brick. At the roofline is a sheet metal cornice. On the alley facade is corbelled brickwork at the roofline and arched one-over-one sash windows.

6. 53-54 Public Square, Salutsky's. Built ca. 1890 this two-story brick structure displays the commercial Italianate style. The storefront of the building has been altered but cast iron pilasters are still extant and a sheet metal cornice over

**United States Department of the Interior
National Park Service****National Register of Historic Places
Inventory—Nomination Form**Pulaski County Multiple Resource
Area, Kentucky

Continuation sheet

Item number

Page

the storefront is intact. The upper facade has one-over-one sash windows each with flat or pedimented sheet metal hood molding. At the roofline is an elaborate metal cornice. At the rear of the building are two storefronts facing Zachary Way. On the upper facade of this elevation are one-over-one sash windows. Interior details include a pressed tin ceiling and original woodwork.

7. 103-105 S. Zachary Way: This two-story brick vernacular building was constructed ca. 1900. The storefronts on the building have been altered through the application of new brick and stone. The upper facade features one-over-one sash windows with brick relief arching and corbelled brick at the roofline.

8. 107 S. Zachary Way: Built ca. 1900, this two-story brick building runs the width of the block and fronts on both Zachary Way and Maple Street. The Zachary Way facade has an altered storefront with bricked in arches and applied Carrara glass. On the upper facade are one-over-one sash windows. The Maple Street facade has also been altered on the ground story with the application of Carrara glass. On the upper facade are rounded arch one-over-one sash windows, corbelled brickwork and terra cotta tiles at the parapet.

9. 109-113 S. Zachary Way: This ca. 1900 two-story brick building has been extensively remodeled on the interior and contains several shops which face both Zachary Way and Maple Street. The Zachary Way facade has three storefronts, two of which are substantially intact with the original display windows and transoms. These storefronts have stone lintels over the doors and stone sills under the eaves. The central storefront has been altered with new frame. On the corners of the building are rusticated limestone quoins. The upper facade has rectangular windows with rusticated stone sills and above the windows is a rebricked cornice. The two original storefronts also have decorative tile floors in their entrance areas. Along Market Street the building has rounded arch windows on both floors and a new entrance with a stucco facing. The Maple Street facade has an altered storefront with new glass and wood panels. The upper facade windows have stone sills and lintels and the brickwork above has been covered with an aluminum sign.

10. 125 S. Maple: Constructed ca. 1910 this three-story brick building is presently vacant. The storefront has been altered with new glass and metal panels. On the upper facade are rounded arch one-over-one sash windows with rusticated stone sills and brick relief arching. At the roofline is a row of corbelled brickwork. The interior has been remodeled but still retains the original pressed tin ceiling.

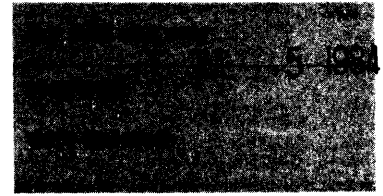
Properties Non-Contributing to the Character of the District:

5. 55-56 Public Square, First and Farmer's National Bank. Built in 1963 the First and Farmer's Bank is a non-contributing structure in the district.

**United States Department of the Interior
National Park Service**

**National Register of Historic Places
Inventory—Nomination Form**

Pulaski County Multiple Resource
Area, Kentucky



Continuation sheet

Item number

Page

South Courthouse Square District

Statement of Significance:

During the early 20th century Somerset experienced a period of growth and expansion. This resulted in a building boom in the downtown area and an increase in commercial activity. Many new buildings of frame and masonry were constructed on the public square and adjacent streets during these years. Most of these buildings featured arched windows, decorative glass and metal cornices typical of the period. Much of Somerset's existing commercial buildings date from this early 20th century construction boom and continue to be the city's commercial and governmental center. A section of buildings along East Mt. Vernon Street was recognized for their architectural significance and placed on the National Register in 1982.

Another important concentration of historic commercial architecture is located along the southern side of the public square. These buildings along South Main Street, Zachary Way, and South Maple Street are also of architectural and historical significance to the development of the community. Within the district boundaries are ten buildings, nine of which are contributive. All of the buildings are two to three stories in height and are of masonry construction. While the storefronts on many of the buildings have been altered, the upper facades display their original architectural character.

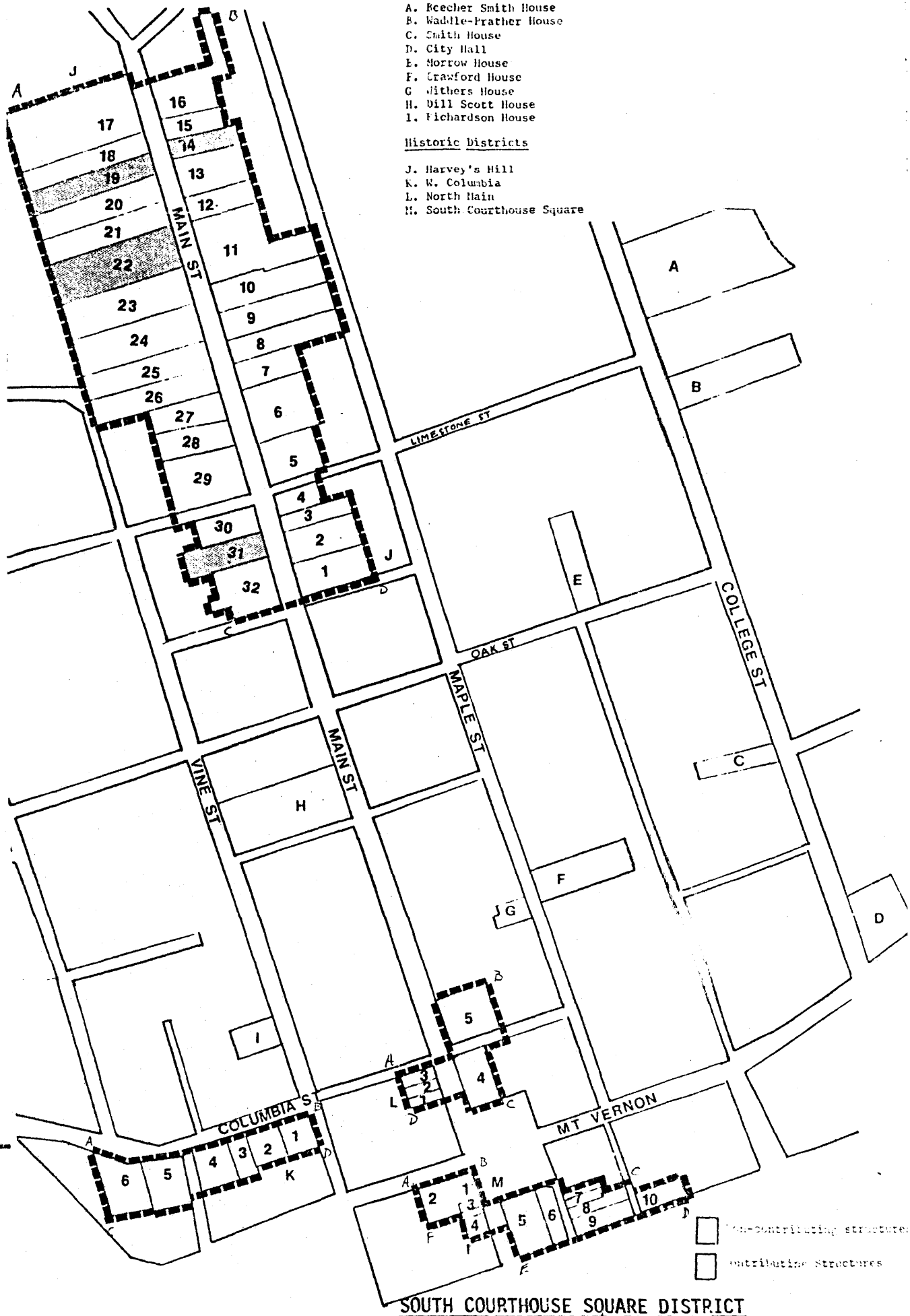
Several of the buildings in the district were constructed between 1880 and 1900. The Italianate style Gibson Building was constructed in 1881 by merchant Robert Gibson and his store was one of Somerset's finest at the turn of the century. At the corner of the public square and West Mt. Vernon Street is the First National Bank Building constructed ca. 1890. This building features cast iron columns and pilasters and arched windows on the second floor. Other early buildings are the Romanesque style Bank of Somerset building and the Italianate style structure at 53-54 Public Square.

After 1900 buildings were constructed along the adjacent side streets such as Zachary Way and Maple Street. These buildings also feature rounded arching on the windows and metal or brick cornices. New construction in the downtown area has been limited in past years. The only intrusion in the district is the First and Farmers National Bank erected in 1963. With this exception the district continues to display its original architectural character. Restoration work on several of the buildings have been completed or are underway.

- A. Beecher Smith House
- B. Waddle-Prather House
- C. Smith House
- D. City Hall
- E. Morrow House
- F. Crawford House
- G. Withers House
- H. Will Scott House
- I. Richardson House

Historic Districts

- J. Harvey's Hill
- K. W. Columbia
- L. North Main
- M. South Courthouse Square



SOUTH COURTHOUSE SQUARE DISTRICT