



Photo # 1

Description:

Corner of Columbia and 7th St. Central  
Presbyterian Church , built C.A. 1914 in  
the Richardsonian Romanesque Style.

Ellsworth Historic District  
Lafayette, Indiana

Photographer:

Mike Warden

Date of Photo:

1976

Location of Neg.

Lafayette Redevelopment  
Commission



Photo 2  
Description:

Columbia Street looking east from 7th  
street.

Ellsworth Historic District  
Lafayette, Indiana

Photographer:	Mike Warden
Date of Photo:	1976
Location of Neg.	Lafayette Redevelopment Commission





HOUSE  
OF  
FITZGERALD

H.F.

Photo # 3

Description:

717 Columbia St. North Facade. Note the detailing on the tower and the four window decorated dormer.

Ellsworth Historic District  
Lafayette, Indiana

Photographer: Mike Warden

Date of Photo: 1976

Location of Neg. Lafayette Redevelopment  
Commission



Photo # 4

Description:

Two of the buildings on Columbia St. South Side.

Ellsworth Historic District  
Lafayette, Indiana

Photographer: Harry Mohler

Date of Photo: 1982

Location of Neg: Schuette Mohler  
& Associates



Photo # 5

Description:

903 Columbia Street. Converted gas station on north edge of district. Now insurance office.

Ellsworth Historic District  
Lafayette, Indiana

Photographer: Don Staley

Date of photo: August, 1985

Location of negative: Lafayette Redevelopment Commission





Photo 6

Description:

14 N. 9th Street. East facade. Appears to be converted apartment building. Now houses optometrist practice.

Ellsworth Historic District  
Lafayette, Indiana

Photographer: Don Staley

Date of photo: August, 1985

Location of negative: Lafayette Redevelopment Commission





Photo #7

Description:

15 N. 9th Street. West facade of early garage structure.

Ellsworth Historic District  
Lafayette, Indiana

Photographer: Don Staley

Date of photo: August, 1985

Location of negative: Lafayette Redevelopment Commission



Photo 8

Description:

7th St. between Columbia and South St.  
Note the brick paved street.

Ellsworth Historic District  
Lafayette, Indiana

Photographer: Harry Mohler

Date of Photo: 1982

Location of Neg: Schuette Mohler  
& Associates





Photo 9

Description: Alley  
between Columbia and South Sts., showing  
back side of bldgs. on South St.

Ellsworth Historic District  
Lafayette, Indiana

Photographer: Harry Mohler  
Date of Photo: 1982  
Location of Neg: Schuette Mohler  
& Associates



Photo 10

Description: 11 N. 7th St., West facade

Ellsworth Historic District  
Lafayette, Indiana

Photographer: Don Staley

Date of Photo: July, 1986

Location of neg.: Lafayette Redevelopment  
Commission





Photo 11

Description:  
St. looking east.

South St. & 6th

Ellsworth Historic District  
Lafayette, Indiana

Photographer: Harry Mohler  
Date of Photo: 1982  
Location of Neg: Schuette Mohler  
& Associates



INDIANA  
26

Photo 12

Description:

South Street, looking east from between  
6th and 7th.

Ellsworth Historic District  
Lafayette, Indiana

Photographer: Mike Warden

Date of Photo: 1976

Location of Neg. Lafayette Redevelopment  
Commission



Photo 13

Description:

620-622 South St. South Facade. Note:

~~Raw~~ iron fence, slate mansard roof and decorated doorways.

Ellsworth Historic District  
Lafayette, Indiana

Photographer:

Mike Warden

Date of Photo:

1976

Location of Neg.

Lafayette Redevelopment  
Commission





SCENE ON SOUTH STREET.

Photo 14

Description: South Street looking east  
between Sixth and Seventh

Ellsworth Historic District  
Lafayette, Indiana

Photo From:	Lafayette Illustrated
Date of Photo:	c. 1880's
Location of Neg.	Tippecanoe County Historical society





Photo 15

Description:

North side of South Street between 6th  
and 7th, Italianate Row Houses - 4 units  
and 2nd Empire Duplex.

Near South Side Historic District  
Lafayette, Indiana

Photographer:

Mike Warden

Date of Photo:

1976

Location of Neg.

Lafayette Redevelopment  
Commission



Photo 16

Description:

703 South St. North Facade. Note the wrought iron fence and bay window which from both floors.

Ellsworth Historic District  
Lafayette, Indiana

Photographer: Mike Warden

Date of Photo: 1976

Location of Neg. Lafayette Redevelopment  
Commission



Photo 17

Description:

South St. between 7th & 8th  
St. looking west.

Ellsworth Historic District  
Lafayette, Indiana

Photographer:

Harry Mohler

Date of Photo:

1982

Location of Neg:

Schuette Mohler  
& Associates





Photo 18

Description:

707 South St. North Facade. Note detailing of cornice around porch and bay window.

Ellsworth Historic District  
Lafayette, Indiana

Photographer: Mike Warden

Date of Photo: 1976

Location of Neg. Lafayette Redevelopmen  
Commission





Photo 19

Description:

711-717 South St., North Facade. Note the decorated frieze and the heavy lintels.

Ellsworth Historic District  
Lafayette, Indiana

Photographer: Mike Warden

Date of Photo: 1976

Location of Neg. Lafayette Redevelopment  
Commission



Photo 20

Description:

10-12 S. 8th Street. East facade.

Ellsworth Historic District  
Lafayette, Indiana

Photographer: Don Staley

Date of photo: August, 1985

Location of negative: Lafayette Redevelopment Commission



Photo 21

Description:

9-11 S. 8th Street. West facade.

Ellsworth Historic District  
Lafayette, Indiana

Photographer: Don Staley

Date of photo: August, 1985

Location of negative: Lafayette Redevelopment Commission





Photo 22

Description:

801 South St. North Facade. Note the  
<sup>wrought</sup>~~raw~~ iron fence, recessed doorway and  
free standing columns.

Ellsworth Historic District  
Lafayette, Indiana

Photographer:

Mike Warden

Date of Photo:

1976

Location of Neg.

Lafayette Redevelopment  
Commission



Photo 23

Description:

South St. from between 8th St. & 9th St.  
Looking West.

Ellsworth Historic District  
Lafayette, Indiana

Photographer:	Harry Mohler
Date of Photo:	1982
Location of Neg:	Schuette Mohler & Associates





Photo 24

Description:

805 South St. North Facade. Note the detailing in brick work.

Ellsworth Historic District  
Lafayette, Indiana

Photographer: Mike Warden

Date of Photo: 1976

Location of Neg. Lafayette Redevelopment  
Commission



Photo 25

Description:

808 South Street. South facade, office building.

Ellsworth Historic District  
Lafayette, Indiana

Photographer: Don Staley

Date of photo: August, 1985

Location of negative: Lafayette Redevelopment Commission





Photo 26

Description:

9th St., looking Southwest along the tracks

Ellsworth Historic District  
Lafayette, Indiana

Photographer: Harry Mohler

Date of Photo: 1982

Location of Neg: Schuette Mohler  
& Associates



Photo 27

Description:

11 N. 9th Street. Converted house, south facade.  
Currently houses realty business.

Ellsworth Historic District  
Lafayette, Indiana

Photographer: Don Staley

Date of photo: August, 1985

Location of negative: Lafayette Redevelopment Commission





Photo 28

Description:

5th St. with railroad tracks running down the center. Looking south from Alabama.

Ellsworth Historic District  
Lafayette, Indiana

Photographer: Harry Mohler

Date of Photo: 1982

Location of Neg: Schuette Mohler  
& Associates





Photo #29

Description: 118, 116 S. 5th St.

Ellsworth Historic District  
Lafayette, Indiana

Photographer: Don Staley

Date of photo: January, 1986

Location of neg.: Lafayette Redevelopment Commission



Photo 30

Description: Alabama St. looking east from 5th showing industry which borders the district. The bldgs. on the other side of 6th St. are in the district.

Ellsworth Historic District  
Lafayette, Indiana

Photographer:	Harry Mohler
Date of Photo:	1982
Location of Neg:	Schuetz Mohler & Associates



Photo 31

Description:

101 S. 6th St. West Facade. One Story  
brick cottage, note the fan attic vent..

Ellsworth Historic District

Lafayette, Indiana

Photographer: Mike Warden

Date of Photo: 1976

Location of Neg. Lafayette Redevelopment  
Commission





105

STONER

Photo 32

Description:

105 S. 6th St. West Facade.

Brick cottage. Note doorway with top light and fanshaped attic vent.

Ellsworth Historic District  
Lafayette, Indiana

Photographer: Mike Warden

Date of Photo: 1976

Location of Neg. Lafayette Redevelopment  
Commission



Photo 33

Description:

609 Alabama Street. North facing facade.

Ellsworth Historic District  
Lafayette, Indiana

Photographer: Don Staley

Date of photo: August, 1985

Location of negative: Lafayette Redevelopment Commission



Photo #34

Description:

617 Alabama Street. An example of modest construction, workers cottage. Several examples still remain in the district.

Ellsworth Historic District  
Lafayette, Indiana

Photographer: Don Staley

Date of photo: Augsut, 1985

Location of negative: Lafayette Redevelopment Commission





Photo #35

Description: 619 Alabama St. North facade.

Ellsworth Historic District

Lafayette, Indiana

Photographer: Don Staley

Date of Photo: January, 1986

Location of neg.: Lafayette Redevelopment Commission



Photo #36

Description: 623,619 Alabama St. North facades.

Ellsworth Historic District  
Lafayette, Indiana

Photographer: Don Staley

Date of Photo: January, 1986

Location of neg.: Lafayette Redevelopment Commission



Photo #37

Description: 629 Alabama St. North facade.

Ellsworth Historic District  
Lafayette, INdiana

Photographer: Don Staley

Date of Photo: January, 1986

Location of neg.: Lafayette Redevelopment Commission





Description:

17 S. 7th St. West Facade. Romanesque Revival, note brick corbel and second story stain glass windows.

Ellsworth Historic District  
Lafayette, Indiana

Photographer: Mike Warden

Date of Photo: 1976

Location of Nef: Lafayette Redevelopment  
Commission



Photo #39

Description: 643,639 Alabama St. North facades.

Ellsworth Historic District

Lafayette, Indiana

Photographer: Don Staley

Date of Photo: January, 1986

Location of neg.: Lafayette Redevelopment Commission



Photo # 40.

Description:

7th St., looking North from Alabama

Ellsworth Historic District  
Lafayette, Indiana

Photographer: Harry Mohler

Date of Photo: 1982

Location of Neg: Schuette Mohler  
& Associates





Photo 41

Description:

111 S. 7th Street. Converted single story ranch house  
now occupied by American Red Cross.

Ellsworth Historic District  
Lafayette, Indiana

Photographer: Don Staley

Date of photo: August, 1985

Location of negative: Lafayette Redevelopment Commission



42

Photo

Description:

102,24, 20 S. 8th Street. Note lack of intrusions,  
typical of district.

Ellsworth Historic District  
Lafayette, Indiana

Photographer: Don Staley

Date of photo: August, 1985

Location of negative: Lafayette Redevelopment Commission



Photo 43

Description:

909 South Street. Expansive grounds and west facing porch.

Ellsworth Historic District  
Lafayette, Indiana

Photographer: Don Staley

Date of photo: August, 1985

Location of negative: Lafayette Redevelopment Commission





Photo #44

Description: 128, 124, 122 S. 5th St. East facades.

Ellsworth Historic District  
Lafayette, Indiana

Photographer: Don Staley

Date of photo: January, 1986

Location of neg.: Lafayette Redevelopment Commission



Photo 45

Description: 206 S. 6th St., West facade

Ellsworth Historic District

Lafayette, Indiana

Photographer: Don Staley

Date of Photo: July, 1986

Location of neg.: Lafayette Redevelopment  
Commission



Photo #46

Description: 114,112 S. 6th St. East facades.

Ellsworth Historic District

Lafayette, Indiana

Photographer: Don Staley

Date of Photo: January, 1986

Location of neg.: Lafayette Redevelopment Commission





Photo #47

Description: 118,114 S. 6th St. East facades.

Ellsworth Historic District  
Lafayette, Indiana

Photographer: Don Staley

Date of Photo: January, 1986

Location of neg.: Lafayette Redevelopment Commission



Photo 48

Description:

201 S. 6th St. West Facade.

Ellsworth Historic District  
Lafayette, Indiana

Photographer: Mike Warden

Date of Photo: 1976

Location of Neg. Lafayette Redevelopment  
Commission



Photo #49

Description: 204,124 S. 6th St. East facades.

Ellsworth Historic District

Lafayette, Indiana

Photographer: Don Staley

Date of photo: January, 1986

Location of neg.: Lafayette Redevelopment Commission





Photo #50

Description: 206 S. 6th St. East facade.

Ellsworth Historic District  
Lafayette, Indiana

Photographer: Don Staley

Date of Photo: January, 1986

Location of neg.: Lafayette Redevelopment Commission



Photo 51

Description: View to southeast of houses on south side of Oregon Street. Note continuity of period housing on this block.

Ellsworth Historic District  
Lafayette, Indiana

Photographer: Don Staley

Date of photo: August, 1985

Location of negative: Lafayette Redevelopment Commission



20-18

52

Photo

Description:

620, 624 Oregon Street. Italianate and more recent bungalow influenced house indicate range of structures on Oregon Street. Latter is, singularly, the most recent style exemplified.

Ellsworth Historic District

Lafayette, Indiana

Photographer: Don Staley

Date of photo: August, 1985

Location of negative: Lafayette Redevelopment Commission





53

Photo

Description:

626 Oregon Street. Note carving on gable eaves.

Ellsworth Historic District  
Lafayette, Indiana

Photographer: Don Staley

Date of photo: August, 1985

Location of negative: Lafayette Redevelopment Commission



54

Photo

Description:

124 S. 7th Street. East facing facade, located on northwest corner of 7th & Oregon.

Ellsworth Historic District  
Lafayette, Indiana

Photographer: Don Staley

Date of photo: August, 1985

Location of negative: Lafayette Redevelopment Commission



Photo 55

Description:

207-209 S. 7th Street. Note wooded hillside above to the east. The orientation of this house suggests its construction postdates that of the railroad. With this in mind, note proximity to tracks.

Ellsworth Historic District  
Lafayette, Indiana

Photographer: Don Staley

Date of photo: August, 1985

Location of negative: Lafayette Redevelopment Commission





56

Photo

Description:

202-204, 206-208, S. 8th Street. East facing facade.

Ellsworth Historic District  
Lafayette, Indiana

Photographer: Don Staley

Date of photo: August, 1985

Location of negative: Lafayette Redevelopment Commission



Photo 57

Description:

5th St.

looking south from between Alabama and New  
York St.

Ellsworth Historic District  
Lafayette, Indiana

Photographer: Harry Mohler

Date of Photo: 1982

Location of Neg: Schuette Mohler  
& Associates



Photo #58

Description: 224, 222, 220 S. 5th St. East facades.

Ellsworth Historic District  
Lafayette, Indiana

Photographer: Don Staley

Date of photo: January, 1986

Location of neg.: Lafayette Redevelopment Commission







Photo #59

Description: 216/218, 214/212, 210/208 S. 5th St.  
East facades.

Ellsworth Historic District  
Lafayette, Indiana

Photographer: Don Staley

Date of photo: January, 1986

Location of neg.: Lafayette Redevelopment Commission



Photo #60

Description: 304 S. 5th St. East facade.

Ellsworth Historic District  
Lafayette, Indiana

Photographer: Don Staley

Date of photo: January, 1986

Location of neg.: Lafayette Redevelopment Commission



Photo #61

Description: 306 S. 5th St. East facade.

Ellsworth Historic District  
Lafayette, Indiana

Photographer: Don Staley

Date of photo: January, 1986

Location of neg.: Lafayette Redevelopment Commission



Photo # 62-

Description:

507 ~~Remy~~ St., North Facade. Note to  
gable/detail.

New York

Ellsworth Historic District  
Lafayette, Indiana

Photographer: Mike Warden

Date of Photo: 1976

Location of Neg. Lafayette Redevelopment  
Commission





63

Photo

Description:

509 ~~Romig~~ St. North Facade.

*New York*

Ellsworth Historic District  
Lafayette, Indiana

Photographer:

Mike Warden

Date of Photo:

1976

Location of Neg.

Lafayette Redevelopment  
Commission



Photo

Description:

511 ~~Romig~~<sup>New York</sup> St. North Facade

Note brick foundation and ornately decorated eaves.

Ellsworth Historic District  
Lafayette, Indiana

Photographer:

Mike Warden

Date of Photo:

1976

Location of Neg:

Lafayette Redevelopment  
Commission



Photo #65

Description:

211 S. 6th St. West Facade. Note <sup>wrought</sup>~~raw~~ iron fence, stucco exterior finish and wood trim on eaves.

Ellsworth Historic District  
Lafayette, Indiana

Photographer: Mike Warden

Date of Photo: 1976

Location of Nef: Lafayette Redevelopment  
Commission





Photo #66

Description: 214, 212, 208 S. 6th St. East facades.

Ellsworth Historic District

Lafayette, Indiana

Photographer: Don Staley

Date of Photo: January, 1986

Location of neg.: Lafayette Redevelopment Commission



Photo #67

Description: 220 S. 6th St. East facade.

Ellsworth Historic District  
Lafayette, Indiana

Photographer: Don Staley

Date of Photo: January, 1986

Location of neg.: Lafayette Redevelopment Commission



Photo # 68.

Description:

601 New Your St. West Facade

Note three story entrance tower and heavy limestone lintels.

Ellsworth Historic District  
Lafayette, Indiana

Photographer: Mike Warden

Date of Photo: 1976

Location of Neg: Lafayette Redevelopment  
Commission



101



Photo

Description:

6th

St. from between Romig St. & New York St.  
looking south.

Ellsworth Historic District  
Lafayette, Indiana

Photographer:

Harry Mohler

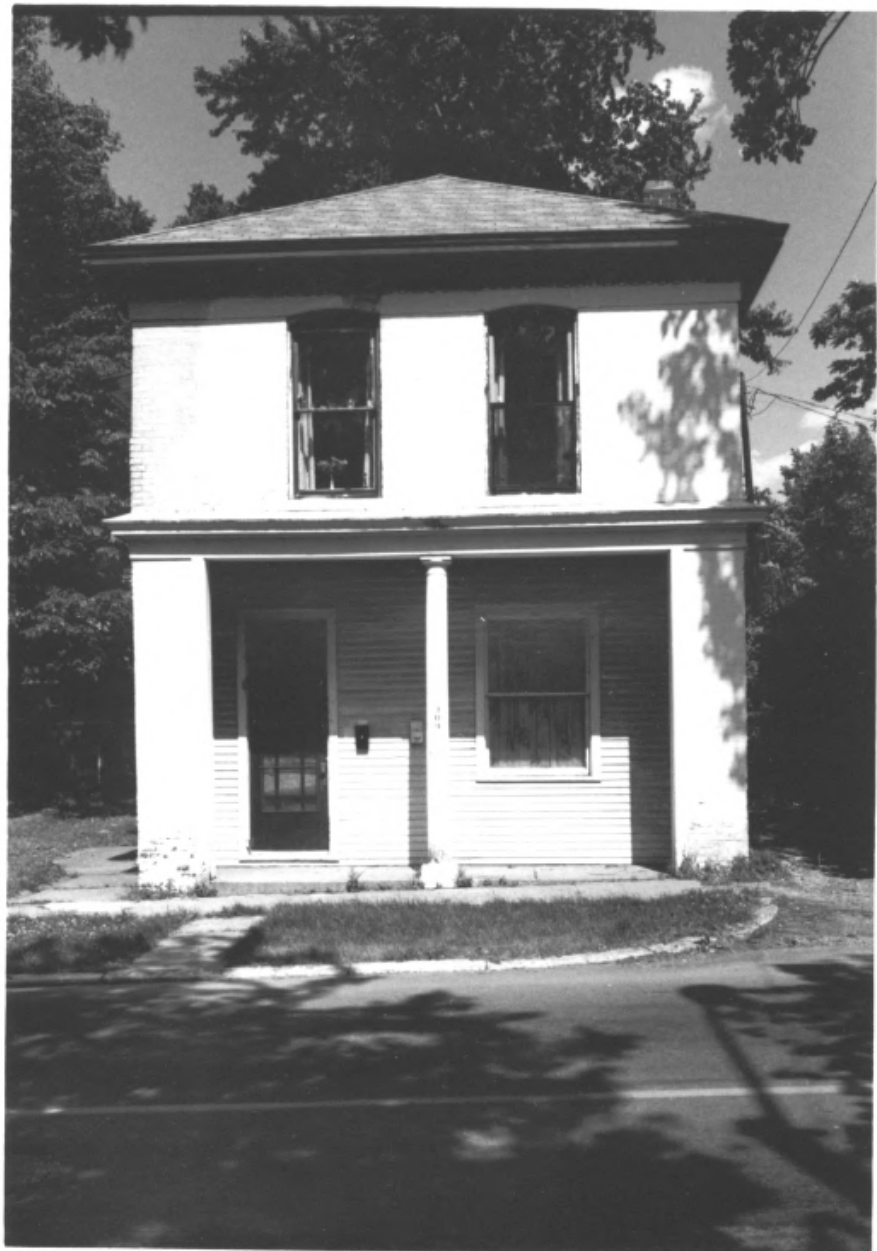
Date of Photo:

1982

Location of Neg:

Schuette Mohler  
& Associates





70

Photo

Description:

309 S. 6th St. West Facade

Ellsworth Historic District  
Lafayette, Indiana

Photographer: Mike Warden

Date of Photo: 1976

Location of Neg: Lafayette Redevelopment  
Commission



Photo 71

Description:

6th

St. looking north from between Romig St.  
and New York St.

Ellsworth Historic District  
Lafayette, Indiana

Photographer:

Harry Mohler

Date of Photo:

1982

Location of Neg:

Schuette Mohler  
& Associates





Photo 72

Description:

6th St.

between Romig St. and New York looking  
northeast.

Ellsworth Historic District  
Lafayette, Indiana

Photographer:

Harry Mohler

Date of Photo:

1982

Location of Neg:

Schuette Mohler  
& Associates







Photo 73

Description: West side of 6th St. between  
Romig St. and New York St.

Ellsworth Historic District  
Lafayette, Indiana

Photographer:	Harry Mohler
Date of Photo:	1982
Location of Neg:	Schuetz Mohler & Associates



Photo 74

Description:

From New

York St. looking southwest.

Ellsworth Historic District.  
Lafayette, Indiana

Photographer:

Harry Mohler

Date of Photo:

1982

Location of Neg:

Schuetz Mohler  
& Associates





Photo 75

Description:

New

York St. looking west across 6th St.

Ellsworth Historic District  
Lafayette, Indiana

Photographer:

Harry Mohler

Date of Photo:

1982

Location of Neg:

Schuette Mohler  
& Associates





ACCOLINA  
1  
NEWSPAPER



Photo 76

Description:

New

York St. looking east from 6th St.

Ellsworth Historic District  
Lafayette, Indiana

Photographer: Harry Mohler

Date of Photo: 1982

Location of Neg: Schuette Mohler  
& Associates



Photo 77

Description: The north  
side of New York St. between 6th and 7th  
Sts.

Ellsworth Historic District  
Lafayette, Indiana

Photographer: Harry Mohler  
Date of Photo: 1982  
Location of Neg: Schuette Mohler  
& Associates





Photo 78

Description: The north side of  
New York St. between 6th & 7th Sts.

Ellsworth Historic District  
Lafayette, Indiana

Photographer: Harry Mohler  
Date of Photo: 1982  
Location of Neg: Schuette Mohler  
& Associates







Photo 79

Description: Southside of New  
York St. looking east across the tracks.

Ellsworth Historic District  
Lafayette, Indiana

Photographer: Harry Mohler  
Date of Photo: 1982  
Location of Neg: Schuette Mohler  
& Associates



Photo 80

Description: New York St.  
looking west from the tracks - south side  
of the street.

Ellsworth Historic District  
Lafayette, Indiana

Photographer: Harry Mohler  
Date of Photo: 1982  
Location of Neg: Schuette Mohler  
& Associates





81

Photo

Description:

The tracks, note the closeness of the houses to the railroad tracks.

Ellsworth Historic District  
Lafayette, Indiana

Photographer:

Harry Mohler

Date of Photo:

1982

Location of Neg:

Schuetz Mohler  
& Associates





Photo 82

Description:

642 New York St., West Facade. Note the Gothic Revival trim on the eaves.

Ellsworth Historic District  
Lafayette, Indiana

Photographer: Mike Warden

Date of Photo: 1976

Location of Neg. Lafayette Redevelopment  
Commission

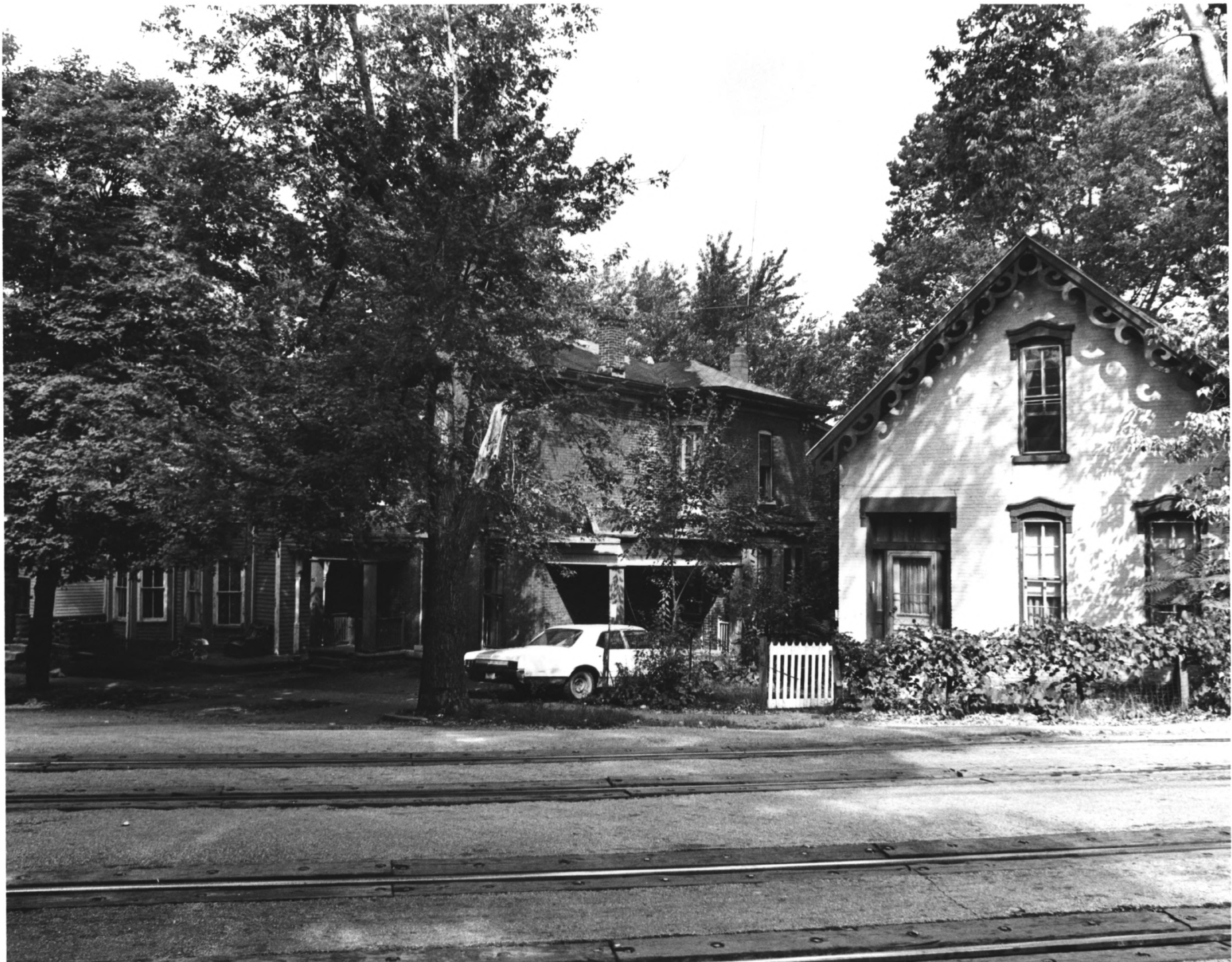


Photo 83

Description:

New

York St. looking northwest across the  
railroad tracks.

Ellsworth Historic District  
Lafayette, Indiana

Photographer:

Harry Mohler

Date of Photo:

1982

Location of Neg:

Schuette Mohler  
& Associates





Photo 84

Description:

New

York St. looking west from railroad tracks. North side of street.

Ellsworth Historic District  
Lafayette, Indiana

Photographer:

Harry Mohler

Date of Photo:

1982

Location of Neg:

Schuette Mohler  
& Associates





35

Photo

Description:

7th St., looking Southwest across New York  
Street

Ellsworth Historic District  
Lafayette, Indiana

Photographer: Harry Mohler

Date of Photo: 1982

Location of Neg: Schuette Mohler  
& Associates



Photo 86

Description:

221 S. 7th Street. Expansive porch on west side faces out over spacious hillside yard.

Ellsworth Historic District  
Lafayette, Indiana

Photographer: Don Staley

Date of photo: August, 1985

Location of negative: Lafayette Redevelopment Commission



Photo 87

Description:

213 S. 7th Street. Front of house faces west down wooded, hillside lot.

Near South Side Historic District  
Lafayette, Indiana

Photographer: Don Staley

Date of photo: August, 1985

Location of negative: Lafayette Redevelopment Commission





Photo #88

Description: 318, 312 S. 5th St. East facades.

Ellsworth Historic District  
Lafayette, Indiana

Photographer: Don Staley

Date of photo: January, 1986

Location of neg.: Lafayette Redevelopment Commission.



Photo #89

Description: 322 S. 5th St. East facade.

Ellsworth Historic District

Lafayette, Indiana

Photographer: Don Staley

Date of photo: January, 1986

Location of neg.: Lafayette Redevelopment Commission



Photo # 90

Description:

Romig St. looking west from 5th St.

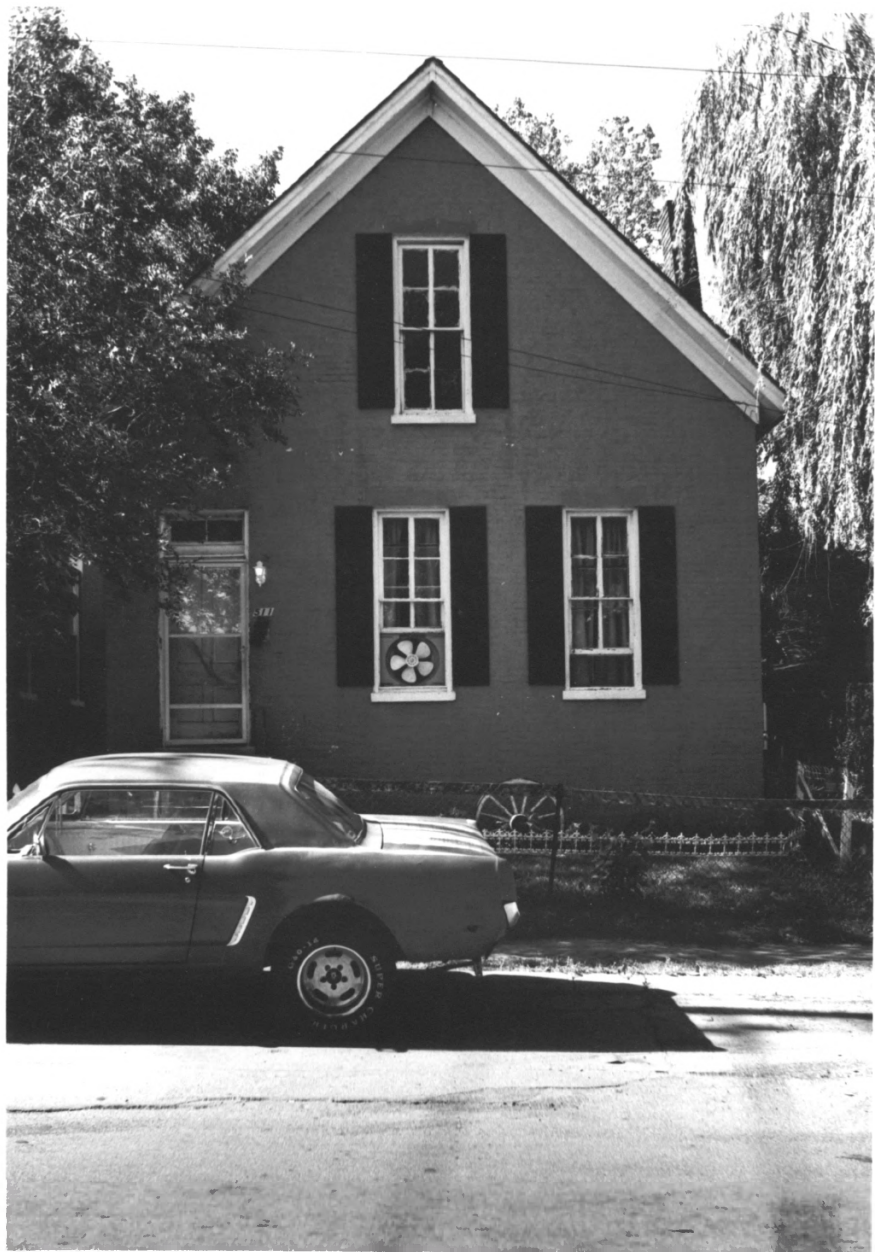
Ellsworth Historic District  
Lafayette, Indiana

Photographer: Harry Mohler

Date of Photo: 1982

Location of Neg: Schuette Mohler  
& Associates







91

Photo

Description: Bldg. 151  
511 Romig St., North Facade

Ellsworth Historic District  
Lafayette, Indiana

Photographer:	Mike Warden
Date of Photo:	1976
Location of Neg:	Lafayette Redevelopment Commission



510

Photo 92

Description:

510 Romig St. South Facade

Ellsworth Historic District  
Lafayette, Indiana

Photographer: Mike Warden

Date of Photo: 1976

Location of Neg: Lafayette Redevelopment  
Commission



93

Photo

Description:

Romig St. looking west from 6th St.

Ellsworth Historic District  
Lafayette, Indiana

Photographer: Harry Mohler

Date of Photo: 1982

Location of Neg: Schuette Mohler  
& Associates







Photo # 94

Description:

6th St.

looking north from Romig St.

Ellsworth Historic District  
Lafayette, Indiana

Photographer:

Harry Mohler

Date of Photo:

1982

Location of Neg:

Schuette Mohler  
& Associates



Photo #95

Description: 622, 628 Romig St. South facades.

Ellsworth Historic District

Lafayette, Indiana

Photographer: Don Staley

Date of photo: January, 1986

Location of neg.: Lafayette Redevelopment Commission



Photo #96

Description: 636 Romig St. South facade. Note brick sidewalk and limestone curb.

Ellworth Historic District  
Lafayette, Indiana

Photographer: Don Staley

Date of photo: January, 1986

Location of neg.: Lafayette Redevelopment Commission





Photo #97

Description: 642, 646, 650 Romig St. South facades.

Ellsworth Historic District  
Lafayette, Indiana

Photographer: Don Staley

Date of photo: January, 1986

Location of neg.: Lafayette Redevelopment Commission



Photo 98

Description:

420 Lingle Ave. Note large lawn downhill to north.

Ellsworth Historic District  
Lafayette, Indiana

Photographer: Don Staley

Date of photo: August, 1985

Location of negative: Lafayette Redevelopment Commission