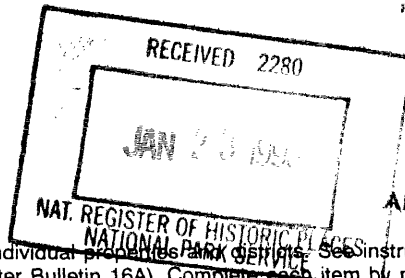


United States Department of the Interior
National Park Service



SEP 5 1997

108

National Register of Historic Places
Registration Form

Ala. Historical Commission

This form is for use in nominating or requesting determinations for individual properties park service. See instructions in How to Complete the National Register of Historic Places Registration Form (National Register Bulletin 16A). Complete each item by marking "x" in the appropriate box or by entering the information requested. If an item does not apply to the property being documented, enter "N/A" for "not applicable." For functions, architectural classification, materials, and areas of significance, enter only categories and subcategories from the instructions. Place additional entries and narrative items on continuation sheets (NPS Form 10-900a). Use a typewriter, word processor, or computer, to complete all items.

1. Name of Property

historic name Oak Grove School

other names/site number N/A

2. Location

street & number approx. 1/4 of a mile west of AL Hwy 69, 1 mile north of N/A not for publication
the intersection of Hwy 69 and U.S. 80, on Hwy 69

city or town Prairieville vicinity

state Alabama code AL county Hale code 065 zip code 36742

3. State/Federal Agency Certification

As the designated authority under the National Historic Preservation Act, as amended, I hereby certify that this nomination request for determination of eligibility meets the documentation standards for registering properties in the National Register of Historic Places and meets the procedural and professional requirements set forth in 36 CFR Part 60. In my opinion, the property meets does not meet the National Register criteria. I recommend that this property be considered significant nationally statewide locally. (See continuation sheet for additional comments.)

[Signature] 1/16/98
Signature of certifying official/Title Date
Alabama Historical Commission (State Historic Preservation Office)
State of Federal agency and bureau

In my opinion, the property meets does not meet the National Register criteria. (See continuation sheet for additional comments.)

Signature of commenting official/Title Date

State or Federal agency and bureau

4. National Park Service Certification

I hereby certify that the property is:

entered in the National Register. See continuation sheet.

determined eligible for the National Register See continuation sheet.

determined not eligible for the National Register.

removed from the National Register.

other, (explain:)

for Signature of the Keeper 3/3/98 Date of Action
[Signature]

Oak Grove School
Name of Property

Hale County, Alabama
County and State

5. Classification

Ownership of Property
(Check as many boxes as apply)

- private
- public-local
- public-State
- public-Federal

Category of Property
(Check only one box)

- building(s)
- district
- site
- structure
- object

Number of Resources within Property
(Do not include previously listed resources in the count.)

Contributing	Noncontributing	
1		buildings
		sites
		structures
		objects
1		Total

Name of related multiple property listing
(Enter "N/A" if property is not part of a multiple property listing.)
The Julius Rosenwald School Building Fund and
Associated Structures (1913-1937)

**Number of contributing resources previously listed
in the National Register**
N/A

6. Function or Use

Historic Functions
(Enter categories from instructions)

EDUCATION/school

Current Functions
(Enter categories from instructions)

RELIGION/church school

7. Description

Architectural Classification
(Enter categories from instructions)

OTHER: no style

Materials
(Enter categories from instructions)

foundation Brick

walls Wood

roof Metal

other _____

Narrative Description

(Describe the historic and current condition of the property on one or more continuation sheets.)

8. Statement of Significance

Applicable National Register Criteria

(Mark "x" in one or more boxes for the criteria qualifying the property for National Register listing.)

- Criteria A, B, C, D with checkboxes and descriptions.

Criteria Considerations

(Mark "x" in all the boxes that apply.)

Property is: N/A

- Criteria A through G with checkboxes and descriptions.

Areas of Significance

(Enter categories from instructions)

Education
Ethnic Heritage - African American
Architecture

Period of Significance

c. 1925 - 1937

Significant Dates

c. 1925

Significant Person

(Complete if Criterion B is marked above)

N/A

Cultural Affiliation

N/A

Architect/Builder

Smith, Samuel (architect)

Narrative Statement of Significance

(Explain the significance of the property on one or more continuation sheets.)

9. Major Bibliographical References

Bibliography

(Cite the books, articles, and other sources used in preparing this form on one or more continuation sheets.)

Previous documentation on file (NPS): N/A

- Documentation checkboxes: preliminary determination, previously listed, designated landmark, recorded by Historic American Buildings Survey, recorded by Historic American Engineering Record.

Primary location of additional data:

- Location checkboxes: State Historic Preservation Office, Other State agency, Federal agency, Local government, University, Other.

Name of repository: Fisk University

Oak Grove School
Name of Property

Hale County, Alabama
County and State

10. Geographical Data

Acreage of Property less than 1 acre

UTM References

(Place additional UTM references on a continuation sheet.)

1

1	6
---	---

4	3	6	1	6	0
---	---	---	---	---	---

3	6	0	1	0	5	0
---	---	---	---	---	---	---

Zone Easting Northing

3

--	--

--	--	--	--	--	--	--	--

--	--	--	--	--	--	--	--	--	--

Zone Easting Northing

2

--	--

--	--	--	--	--	--	--	--

--	--	--	--	--	--	--	--	--	--

4

--	--

--	--	--	--	--	--	--	--

--	--	--	--	--	--	--	--	--	--

See continuation sheet

Verbal Boundary Description

(Describe the boundaries of the property on a continuation sheet.)

Boundary Justification

(Explain why the boundaries were selected on a continuation sheet.)

11. Form Prepared By

name/title Jeff Mansell, Trina Binklev, and Susan Enzweiler (AHC)

organization Cahaba Trace Commission date February 16, 1997

street & number Route 1, Box 147 telephone (205) 665-7982

city or town Brierfield state Alabama zip code 35035

Additional Documentation

Submit the following items with the completed form:

Continuation Sheets

Maps

A **USGS map** (7.5 or 15 minute series) indicating the property's location.

A **Sketch map** for historic districts and properties having large acreage or numerous resources.

Photographs

Representative **black and white photographs** of the property.

Additional items

(Check with the SHPO or FPO for any additional items)

Property Owner

(Complete this item at the request of SHPO or FPO.)

name Oak Grove Baptist Church % Ms. Edmonia Borden

street & number 11 Gaston Lane telephone 334-289-0034

city or town Demopolis state Alabama zip code 36732

Paperwork Reduction Act Statement: This information is being collected for applications to the National Register of Historic Places to nominate properties for listing or determine eligibility for listing, to list properties, and to amend existing listings. Response to this request is required to obtain a benefit in accordance with the National Historic Preservation Act, as amended (16 U.S.C. 470 *et seq.*).

Estimated Burden Statement: Public reporting burden for this form is estimated to average 18.1 hours per response including time for reviewing instructions, gathering and maintaining data, and completing and reviewing the form. Direct comments regarding this burden estimate or any aspect of this form to the Chief, Administrative Services Division, National Park Service, P.O. Box 37127, Washington, DC 20013-7127; and the Office of Management and Budget, Paperwork Reductions Projects (1024-0018), Washington, DC 20503.

United States Department of the Interior
National Park Service

National Register of Historic Places
Continuation Sheet

7 1

Section number _____ Page _____

Oak Grove School
Prairieville vicinity
Hale County, Alabama

The Oak Grove School, c. 1925, is a "two teacher" Rosenwald school building constructed according to Designs No. 20 & 20-A, Two Teacher Community Schools, as found in Samuel Smith's *Community School Plans*, published in booklet form in 1924 by the Rosenwald Southern Office in Nashville. Smith became director of the Southern Office in 1920 and had supplied plans for Rosenwald Schools since that time.

The one story frame building rests on a foundation of brick piers. The exterior wall material is simple weatherboarding. The cross gable roof is covered in corrugated metal and features two interior brick chimneys. The Oak Grove school exhibits a small amount of Craftsman style detailing, such as the brackets found along the eaves of the gables and the exposed rafters. As one would expect from a Rosenwald school, the building has an east-west orientation, the facade faces east.

Basically, the Oak Grove school is T-shaped, with a rectangular block of classrooms and a projecting gable wing containing an industrial room. The centrally placed projecting gable wing is centered along a five bay facade and contains a band of four 9 over 9 double hung sash windows. This wing was added onto in the mid 1950s, creating a larger industrial room. To the right of the gable wing is a secondary entrance, a single leaf door. The primary single leaf entrance, which is protected by a shed roof overhang with Craftsman brackets, is on the left (southern) side of the projecting wing. The south elevation features paired 9 over 9 double hung sash windows in the gable end. Along the west elevation are two bands of five 9 over 9 double hung sash windows and at the extreme northwest corner, a single leaf entrance. The northern facade is plain, with no window or door openings.

The interior room arrangement adheres to the plan found in 20-A, with two large 22' x 30' classrooms separated by folding doors. A 10' x 20' industrial room is located midway along the eastern elevation with doors opening into both classrooms. A cloak room (4' x 32') is located along the southern wall of the building. The interior walls and ceiling are covered with beaded board. The school retains some interior furnishings such as chalk boards and some desks.

The Oak Grove school is in excellent condition and the building maintains a high degree of integrity, retaining its original design and plan, location, workmanship, materials and sense of place.

Archaeological Component

Although no archaeological study has been conducted, the potential for subsurface material remains is high. This material has the potential to yield significant information in regard to the themes identified in the historic contexts, in particular, the themes of education, ethnic heritage - African American, social and cultural history, and architecture.

United States Department of the Interior
National Park ServiceNational Register of Historic Places
Continuation SheetSection number 8 Page 2Oak Grove School
Prairieville vicinity
Hale County, Alabama

Statements of Significance

Criteria A - Education, Ethnic Heritage-African American

The Oak Grove School is significant as a school building constructed under the Julius Rosenwald School Building Fund program. From 1913 to 1937, the Julius Rosenwald School Building Fund helped finance over 5,358 school buildings, teacher's homes, and industrial buildings for African American education in fifteen Southern states. The Rosenwald School Building Fund represents a benchmark in the history of black education, representing the most important philanthropic force that came to aid of African Americans during the first half of the twentieth century. As a result of the Rosenwald Fund's initiatives, more black children went to school longer and with better trained teachers in better constructed and equipped schools. The school-building effort awakened the public school authorities and the general public to the need for more adequate educational provisions for African Americans. Remaining Rosenwald Schools, such as the Emory School, are the last remaining vestiges of one of the most important school building projects ever undertaken in the United States. They also reflect African Americans' pursuit of education and their struggle for educational opportunities in the segregated South.

Criteria C - Architecture

As a Rosenwald funded school, the Oak Grove School is significant as a building which was constructed according to designs and specifications supplied by Samuel Smith, Director of the Rosenwald School Building Fund. Built according to Designs 20 & 20A - Two Teacher Schools as found in Smith's *Community School Plans*, the Oak Grove School building reflects the architectural plans and specifications provided by the Rosenwald Fund to ensure the construction of a quality facility. The Julius Rosenwald School Building Fund was one of the most important and ambitious school building projects ever undertaken. Booker T. Washington and Julius Rosenwald were determined to provide up to date educational facilities for African Americans. As such, these school buildings incorporated industrial rooms, libraries, cloak rooms, heating stoves, and folding doors between rooms so that facilities could be used as community centers. Plans dictated east/west orientation for maximization of natural light, window shades, sanitary privies, and interior paint schemes. So revolutionary were these mass produced, standardized designs, that education officials soon began building white schools according to these plans as well. By 1928, one in five rural schools for blacks was a Rosenwald School. By the 1930s, these modern buildings had replaced thousands of old shanty schoolhouses. These school buildings set the standard not only in regard to schoolhouse architecture but they influenced the construction, architecture, and maintenance of other structures in rural and nearby areas.

Historical Summary

According to records in the Rosenwald School Building Fund papers in Fisk University, Nashville, the Oak Grove School was built in 1925 for \$3,000. Of that sum, African Americans raised \$1,400 while the State of Alabama contributed \$900 and the Julius Rosenwald Fund contributed \$700. Like so many Rosenwald schools, the Oak Grove School was built near a religious building, the Oak Grove Missionary Baptist Church. Oak Grove continued to be used as

United States Department of the Interior
National Park Service

National Register of Historic Places Continuation Sheet

Section number 8 Page 3

Oak Grove School
Prairieville vicinity
Hale County, Alabama

an elementary school until the 1960s when consolidation merged the classes with the nearby Sunshine School. Today, the Oak Grove Missionary Baptist Church beautifully maintains the building and utilizes it as a church/community center and Sunday School.¹

¹Charles Ramey, interview with author, 3 February, 1997 (Ramey is the former Superintendent of Hale County Schools). Also, Records of the Board of Education, Hale County, Alabama, 1910-1940, Hale County Courthouse, Greensboro, Alabama; *A Compendium of Rosenwald Schools and Their Costs for Alabama*, Julius Rosenwald School Building Fund papers, Fisk University Archives, Nashville, Tennessee; Samuel Smith, *Community School Plans*, Nashville, TN: The Southern Office, 1924.

United States Department of the Interior
National Park Service

National Register of Historic Places Continuation Sheet

Section number 9, 10 Page 4

Oak Grove School
Prairieville vicinity
Hale County, Alabama

Bibliography

Records of the Hale County Board of Education. Hale County Courthouse, Greensboro, Alabama.

Rosenwald, Julius F. Paper. Nashville, TN: Special Collections, Fisk University.

Ramey, Charles. interview with author, 3 February 1997.

Smith, Samuel. *Community School Plans*. Nashville, TN: The Southern Office of the Julius Rosenwald Fund, 1924.

Washington, Booker T. and Clinton Calloway. *The Rural Negro School and Its Relation to the Community*. Tuskegee, AL: Extension Department, Tuskegee Normal and Industrial Institute, 1915.

Verbal Boundary Description

That portion of land located in NE 1/4 of Section 9, Township 18, Range 4 East, parcel 22, lying in Lot 8, Block 1 of the Darby Willis Subdivision, beginning at the southeast corner running north 630', west 210', south 630' and east 210', to point of beginning.

Boundary Justification

The boundaries were drawn to include that parcel of land historically associated with the Oak Grove School.

United States Department of the Interior
National Park Service

National Register of Historic Places Continuation Sheet

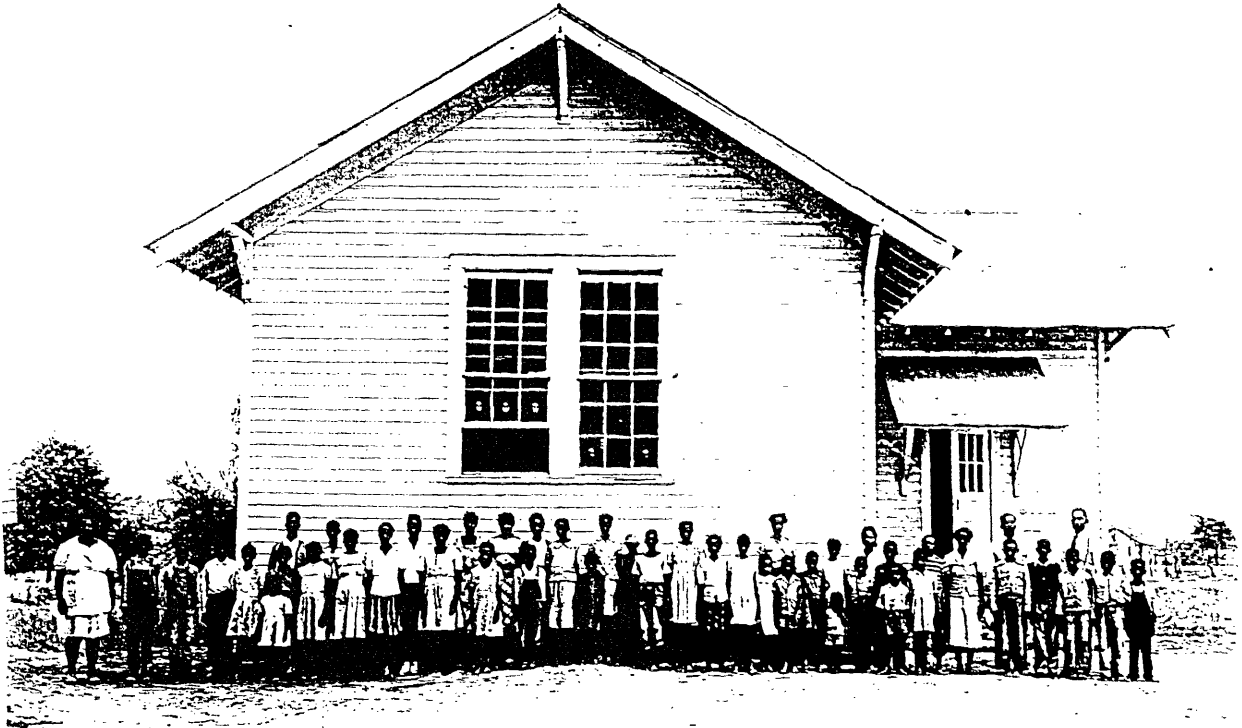
Section number _____ Photos _____ Page 5

Oak Grove School
Prairieville vicinity
Hale County, Alabama

Photographs

The information contained in items #1-5 is the same for all photographs.

1. Oak Grove School
 2. Hale County, Alabama
 3. Jeff Mansell, photographer
 4. 28 January 1997
 5. Negatives on File at the Alabama Historical Commission
 6. Photograph #1, camera facing north
 7. Southern elevation
-
6. Photograph #2, camera facing southwest
 7. East elevation, side and rear of school



**Oak Grove School
Photograph c. 1950
Courtesy Hale County Board of Education**

Photo #2

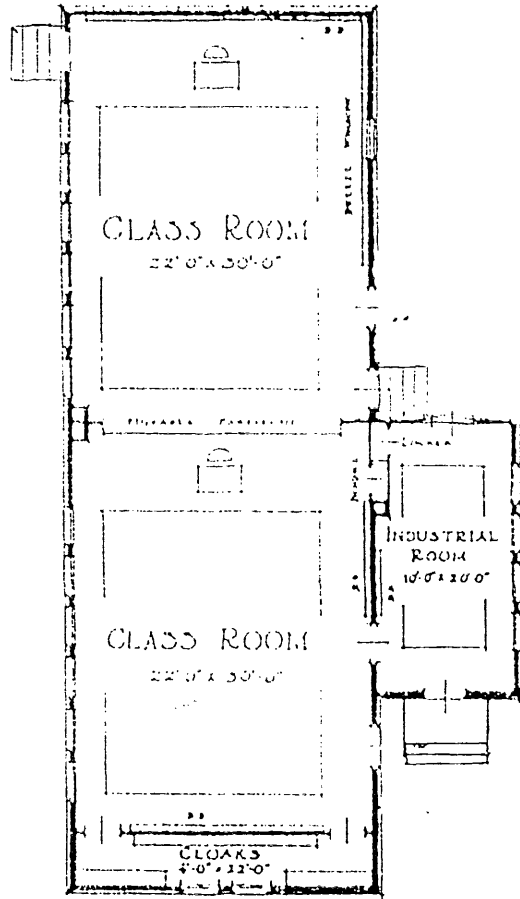


Photo #1

Floorplan of the Oak Grove School

Prairieville vicinity, Hale County, Alabama
not to scale

**United States Department of the Interior
National Park Service**

**National Register of Historic Places
Continuation Sheet**

Section number _____ Page _____

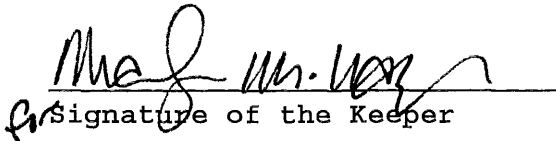
SUPPLEMENTARY LISTING RECORD

NRIS Reference Number: 98000108 Date Listed: 3/3/98

Oak Grove School Hale ALABAMA
Property Name County State

Rosenwald School Building Fund & Associated Buildings MPS
Multiple Name

This property is listed in the National Register of Historic Places in accordance with the attached nomination documentation subject to the following exceptions, exclusions, or amendments, notwithstanding the National Park Service certification included in the nomination documentation.


Signature of the Keeper

3/3/98
Date of Action

=====
Amended Items in Nomination:

Section No. 8

This nomination is amended to show that the property meets the conditions of Criteria Consideration A, because it is currently owned by the Oak Grove Baptist Church.

This change has been confirmed with the Alabama SHPO.

DISTRIBUTION:
National Register property file
Nominating Authority (without nomination attachment)