

United States Department of the Interior
National Park Service

RECEIVED
MAR 8 1994
NATIONAL REGISTER

FINAL

National Register of Historic Places Registration Form

This form is for use in nominating or requesting determinations of eligibility for individual properties or districts. See instructions in *Guidelines for Completing National Register Forms* (National Register Bulletin 16). Complete each item by marking "x" in the appropriate box or by entering the requested information. If an item does not apply to the property being documented, enter "N/A" for "not applicable." For functions, styles, materials, and areas of significance, enter only the categories and subcategories listed in the instructions. For additional space use continuation sheets (Form 10-900a). Type all entries. Use letter quality printers in 12 pitch. Use only 25% or greater cotton content bond paper.

1. Name of Property

historic name: Saddlehorn Utility Area Historic District

other names/site number: N/A

2. Location

street & number: Colorado National Monument

(N/A) not for publication

city, town: Grand Junction, Colorado

(X) vicinity

state: Colorado

code: CO

county: Mesa

code: 077

zip code: 81521

3. Classification

Ownership of Property

() private

() public-local

() public-State

(X) public-Federal

Category of Property

() building(s)

(X) district

() site

() structure

() object

Number of Resources within Property

Contributing

Noncontributing

4

 buildings

 sites

1 structures

 objects

4

1 Total

Name of related multiple property listing:

Colorado National Monument MPS

Number of contributing resources previously

listed in the National Register N/A

4. State/Federal Agency Certification

As the designated authority under the National Historic Preservation Act of 1966, as amended, I hereby certify that this (X) nomination () request for determination of eligibility meets the documentation standards for registering properties in the National Register of Historic Places and meets the procedural and professional requirements set forth in 36 CFR Part 60.

In my opinion, the property (X) meets () does not meet the National Register criteria. () See continuation sheet.

Edward [Signature]
Signature of certifying official

3/8/94
Date

National Park Service
State or Federal agency and bureau

In my opinion, the property (X) meets () does not meet the National Register criteria. () See continuation sheet.

James Edward Hartmann
Signature of Commenting or Other Official

March 26, 1993
Date

State Historic Preservation Office
State or Federal Agency and Bureau

5. National Park Service Certification

I, hereby, certify that this property is:

(X) entered in the National Register.

() See continuation sheet

() determined eligible for the National Register. () See continuation sheet

() determined not eligible for the National Register.

() removed from the National Register.

() other, (explain): _____

Beth Boland

4/21/94

Signature of the Keeper

Date of Action

6. Functions or Use

Historic Functions (enter categories from instructions)

Current Functions (enter categories from instructions)

Other: park utility/maintenance areaOther: park utility/maintenance areaGovernment: park administration officesGovernment: park administration offices

7. Description

Architectural Classification

Materials (enter categories from instructions)

(enter categories from instructions)

Other: National Park Service Rusticfoundation concretewalls sandstoneroof slate; woodother N/A

Describe present and historic physical appearance.

Summary

The Saddlehorn Utility Area is located off of Rim Rock Drive, approximately 5 miles from the west entrance of Colorado National Monument. Four historic buildings are located in the maintenance yard: The Roads and Trails Shop (HS-4H), the Oil House (HS-5H), the Open Storage Building (HS-6H), and the Buildings and Utilities Shop (HS-7H). All buildings are rectangular, one-story structures constructed of native red sandstone masonry by the Civilian Conservation Corps (CCC) under between 1937 and 1941. The style exemplifies National Park Service Rustic Architecture. One non-contributing structure, a fuel island, is located in the utility area. The buildings are in good condition and, in spite of some modifications, maintain integrity of location, setting, design, materials, workmanship, feeling, and association from the historic period.

Setting

The Saddlehorn Utility Area is located in the northwest portion of Colorado National Monument. The topography of the 32-square mile park includes the northern rim of the Uncompahgre Plateau with its deeply cut canyons and towering rock formations. The setting in the vicinity of the utility area includes juniper and pinon pine trees, native brush vegetation, as well as natural sandstone cliffs. The area is named for the distinctive sandstone monolith to the northeast, "Ca-Roo-Nump-Ta-Chee" or "Saddlehorn". The park's headquarters building and visitor center (built in 1963) is located about one-quarter mile to the east of the utility area. The Saddlehorn Campground is located about one-half mile to the east. Directly north of the utility area are five residential buildings, constructed between 1958 and 1963. These are partially screened from view by topography and vegetation. (The relationship of modern MISSION 66-era buildings to the Saddlehorn Utility Area Historic District is shown on the accompanying site map.) Three of the buildings (HS-4, HS-6, HS-7) face into a central paved yard; the oil house (HS-5H) and fuel island are located in the center of the yard. (See attached topographic maps and drawings.)

Description

Roads and Trails Shop (HS-4H): This one-story, rectangular building is constructed on a concrete foundation from native red sandstone set in a coursed ashlar pattern with stepped corners. The east facade has one entrance doorway with a fixed pane single-light transom window. There are three modern wood overhead garage doors of three different widths (10', 12', 14'); two contain 8 lights, and one smaller overhead door has 6 lights. The saltbox roof is covered with cedar shingles. One stone chimney with stovepipe and three vents are located on the roof. The gabled ends continue the coursed ashlar pattern of stonework of the walls and have an exposed ridge beam and purlins. Triple divided 9-light steel sash windows are located on side elevations; three 8-light steel sash windows are on the rear elevation of the building. All window openings have wood lintels with window sills constructed of native red sandstone blocks. Wood and metal trim on the building are painted

(X) See continuation sheet

United States Department of the Interior
National Park Service

RECEIVED

FEB 28 1994

NATIONAL
REGISTER

National Register of Historic Places
Continuation Sheet

Section number 7 Page 2

rust brown. The interior consists of a large rectangular room, except for a small restroom, added in the mid-1970s. (See drawing #3011B, attached as documentation.)

Alterations to the building involved replacement of the original hinged garage doors in 1962. Originally there were four windowless, wooden 10' wide doors, with a pedestrian door cut into one of them (see copy of historic photo, #13). Three of the doors were removed, and the supports were moved to accommodate two wider doors and a pedestrian entrance. These changes did not result in any loss of fabric to the exterior walls, nor greatly change the appearance of the building. In 1976 the cedar shingle roof was replaced with a like roof. At the same time the interior was modernized, including the installation of drywall system, and does not retain historic integrity.

Oil House (HS-5H): Located in the center of the maintenance yard, this small, one-story rectangular structure was constructed in 1938 on a concrete foundation from native red sandstone set in a coursed ashlar pattern. In keeping with the other resources in the district, the corners are stepped and the gabled roof is covered in cedar shingles with the purlins and ridge beam exposed. (At one time the roof was covered with corrugated metal, according to property records. It is not known if the original roof was metal or cedar shingle.) The building's two doors are constructed of vertical wood planks. The entrance on the southeast side is a pedestrian entrance. There is one 6-light steel sash window in this elevation. The window opening has wood lintel and sandstone sill. The door on the northwest facade opens onto a concrete and stone loading dock. Wood and metal trim are painted rust brown. There is a small, stone block-size opening on the south side of the building. The interior is one open, nearly square room with a concrete floor, stone walls and exposed rafters. (See drawing #2062 attached as documentation.)

The structure has a single fuel pump on a small stone pad. Originally there were three older fuel pumps. All were removed at an unknown date. (See historic photo copy #14.) Surrounding the fuel island is original sandstone curbing. From the front of the building to the curbing is a sandstone terrace. Both the terrace and curbing are contributing features to the building. The oil house is used to store flammable materials such as oil, gasoline, and paints. With exception of a change in roofing materials, no modifications have been made to the building itself, including the interior which retains its historic appearance.

Open Storage Building (HS-6H): (also called the Equipment Storage Building) Built in 1941 by the CCC, this rectangular one-story red sandstone structure is an open storage facility with 7 bays, 5 open and 2 closed, and a pedestrian entrance on the primary facade. The closed bays have wooden overhead garage doors with 8-light windows. Constructed on a concrete foundation, walls faced with native sandstone set in a coursed ashlar pattern. The lower courses are stepped. Triple divided 9-light steel sash windows are located on the end walls; seven 8-light steel sash windows are located on the rear wall. The window openings have wood lintels and sandstone sills. The saltbox roof is low rise and covered with cedar shingles and is supported by wood trusses and a large header beam over the garage bays, with wooden posts between each open bay. Wood and metal trim are painted rust brown. (See drawing #2026 attached as documentation.)

(X) See continuation sheet

United States Department of the Interior
National Park Service

**National Register of Historic Places
Continuation Sheet**

Section number 7 Page 3

The original building had 7 open bays with an interior plan of 14 stalls. (See historic photo copies #15 and #16.) In 1985 two bays were enclosed to create five rooms: a water system chlorinator room, maintenance warehouse, museum storage area, and interpreters' work area. The open bays are still used, as they were during the historic period, for vehicle parking and storage of lumber, sand, and other maintenance tools and materials. The building originally had dirt floors. In 1952 a 4" poured concrete floor was added. The interior of the building has been modernized and lacks integrity.

Buildings and Utilities Shop (HS-7H): (also called Administration Building or Warehouse and Office) Constructed in 1941 by the CCC, this one-story, rectangular building was built on a concrete foundation of sandstone blocks set in coursed ashlar pattern with stepped lower courses. The primary (southeast) facade has one 8-light overhead garage door, one 15-light steel sash window, four 12-light steel sash windows, and two 3-light doors. The end walls each have two 15-light steel sash windows with one 6-light steel sash window at basement level. All window openings (except for those at basement level and transoms) are framed with concrete lentils with wood veneer and sandstone sills. The building has one sandstone chimney slightly offset from the center. The gabled roof is of moderate rise and is covered with cedar shingles. Wood and metal trim are painted rust brown.

The interior plan is divided as follows: the southwest half of the building is one room, the northeast half is divided into four spaces, used for administrative offices and storage. The shop also has a half basement on its northeast end, which contains the furnace room, lunch room, restroom, and closets. The building also has an unfinished attic. (See drawings #2031A and #2031B attached as documentation.)

Alterations to the Buildings and Utilities Shop include replacement of the original asphalt shingle roof covering with a cedar shingles after 1976. In 1975 the original 10' wide hinged, windowless, wooden garage doors were replaced with the wider modern overhead door described above. The doorway was enlarged 18" on one side, removing enough stone wall to accommodate a 12' power-operated door. (See historic photo copies #17 and #18.) Interior alterations include the addition of a restroom (1954) and a poured concrete floor (1962) in the basement, and drop ceiling installed on the ground floor (ca. 1975). Partitions were installed to create the workspaces described above. Other than exposed rock walls in the open area of the building, the interior has been modernized and is not considered significant. While some historic fabric was lost in modifications to the roof and garage door, the exterior of the shop still retains sufficient integrity in appearance to meet National Register criteria.

Fuel Island (no number): A small, covered fuel island is located between the Buildings and Utilities Shop (HS-7H) and the Oil House (HS-5H). This structure was constructed in 1980 on a concrete foundation with two sandstone columns supporting a narrow, rectangular gable roof covered with cedar shingles. Three fuel pumps are mounted on the concrete island, one on either side of the support columns. While the building is a non-contributing structure in the district, its design and materials are compatible with the surrounding historic buildings and it is considered non-intrusive.

(X) See continuation sheet

**United States Department of the Interior
National Park Service**

**National Register of Historic Places
Continuation Sheet**

Section number 7 Page 4

Modifications and Integrity Statement

The Saddlehorn Utility Area has maintained much of its original function since its date of construction, that is as the monument's centralized maintenance and storage area with some administrative offices. Physical modifications, described earlier, have primarily resulted from the need to improve the usefulness of the buildings. All interiors have been modernized with the exception of the Oil House. Some changes in original openings resulted from the replacement of garage doors or in enclosing previously open bays. Documentation indicates that in at least the case of the Oil House and Buildings and Utilities Shop, the roofing material was not cedar shingle as it is now. All buildings have been well-maintained and are in good condition. The alterations to the buildings in the utility area do not affect the overall integrity of the exteriors to a significant degree. The buildings still possess sufficient qualities of setting, design, materials and workmanship to have integrity.

8. Statement of Significance

Certifying official has considered the significance of this property in relation to other properties: ___ national ___ statewide X local

Applicable National Register Criteria X A ___ B X C ___ D
Criteria Considerations (Exceptions) ___ A ___ B ___ C ___ D ___ E ___ F ___ G

Areas of Significance

(enter categories from instructions)

Period of Significance Significant Dates
1937 - 1944 1937; 1938; 1941

Architecture
Social History

Cultural Affiliation
N/A

Significant Person

N/A

Architect/Builder

National Park Service
Civilian Conservation Corps

State significance of property, and justify criteria, criteria considerations, and areas and periods of significance noted above.

Summary

The Saddlehorn Utility Area has local significance under National Register Criterion A for its association with the Civilian Conservation Corps (CCC) and the Works Progress Administration. The utility area buildings also have local significance under National Register Criterion C for their exemplary representation of National Park Service Rustic Architecture. The materials and architectural design of these resources reflect the philosophy of incorporating natural landscape elements into planning and design. The period of significance for the utility area buildings dates from 1937 (when the first of the four was built) to 1944, the end of the historic period as defined by the National Register. Significant dates relate to the dates of construction of the buildings.

This nomination is part of the "Colorado National Monument Multiple Property Submission." The Saddlehorn Utility Area Historic District is associated with the historic context "National Park Service Rustic Architecture and Public Works Construction, 1933-1942". Two other related individual nominations associated with the multiple property submission are the nearby Saddlehorn Caretaker's Residence and Garage, and the Saddlehorn Comfort Station. The relationship of these three areas is shown on the accompanying site map. While the resources of all three are tied by architectural style, historic context, and period of significance, their distance from each other, topography, and intrusions (Mission 66-era buildings) preclude nominating them as an intact district. (The utility area is not visible from the caretaker's residence and garage as there is a hill between them.)

Background History

Designed in 1935 by the National Park Service's Western Division of the Branch of Plans and Design, the buildings in the utility area were constructed from 1937 to 1941 with Emergency Conservation Works funding, these were built by craftsmen hired for their skills under the New Deal Relief appropriations. Many of these craftsmen were LEMs (local experienced men), reputed to be stonemasons of Italian descent, that trained a number of the CCC enrollees. The construction was administered by the Public Works Administration and built by contract labor. Sandstone blocks, quarried in Colorado National Monument by CCC men, either from the immediate vicinity or from the Rim Rock Drive construction project, were the primary building material.

United States Department of the Interior
National Park Service

**National Register of Historic Places
Continuation Sheet**

Section number 8 Page 2

The larger Saddlehorn area, which also included a caretaker's residence/garage, campground and CCC camp, was built in response to the need for a permanent base camp for CCC workers, as they were employed in the construction of Rim Rock Drive and other park facilities. In addition, much of the road had been completed by 1938, making the area accessible to visitors and creating a demand for recreational facilities.¹ The first two service buildings in the utility area, the Roads and Trails Shop (HS-4H) and the Oil House (HS-5H), were completed in 1937 and 1938, respectively. The Open Storage Building (HS-6H) and Building and Utilities Shop (HS-7H) were completed in 1941 and 1942, respectively. The Building and Utilities Shop became the primary administrative offices for the monument, continuing that function until 1963 when the new headquarters was constructed. The other buildings served as garages, warehouses, storage facilities, and other functions related to the activities of building and maintenance at the monument.

The Saddlehorn Utility Area served to augment the main administrative area of CCC camp NM-2-C, located about one-half mile to the east. A number of CCC camps were established in or near the monument to support the crews working on Rim Rock Drive and other projects. Camp NM-2-C was temporarily established at Monument Canyon trailhead in March of 1933, but was disbanded and moved to Saddlehorn, when the permanent camp was established. (Additional information about the workforce is included in Section E of the "Colorado National Monument Multiple Property Submission.")

The earliest plans for buildings to house workers of NM-2-C at Saddlehorn were first laid out by the National Park Service in November 1933. The location of the CCC camp buildings at Saddlehorn was to the east of the caretaker's residence, due south of the Saddlehorn. Up until the time it was built, there had not been a permanent administrative facility for the CCC. A Campground General Plan drawing of September 1934 shows a "Base Ball Field for CCC Camp" as well as a planned tennis court. The drawing also shows the proposed headquarters, utility area, and campgrounds. By June 1935 plans had also been finalized for a park headquarters area that included the CCC administrative and residential area, the caretaker's residence and garage, and a park administration building just north of the residence. (The proposed administration building was never constructed where sited.) The CCC buildings in this camp included an administration building, recreation hall, mess hall, latrine, and 5 barracks. In addition, the 1935 map shows the campground with a baseball field. Plans for the utility area had also been finalized by July 1935. The utility area, proposed on the June drawing to be constructed south of the custodian's residence, was actually built west of it as shown on the July drawing. (Copies of all four maps are attached as documentation. Design and construction drawing numbers are listed in Item 9.)

The CCC program was phased out at the start of World War II. As men were called to military duty, projects were abandoned and camps dispersed. Most work by the CCC within

(X) See continuation sheet

¹ see Rim Rock Drive Historic District individual nomination, part of the Colorado National Monument Multiple Property Submission.

United States Department of the Interior
National Park Service

**National Register of Historic Places
Continuation Sheet**

Section number 8 Page 3

Colorado National Monument had ended by 1941, and the program was completely shut down in 1942. The exact fate of the buildings which the camp NM-2-C occupied has yet to be documented with regard to their dates and method of removal. According to Hank Schoch, the monument's Chief Ranger, at least one was burned as a fire training exercise. By the early 1960s the only buildings in that area were the latrine/wash house and several staff residences that may have been moved into the area. When new housing was constructed north of the utility area in the late 1950s and early 1960s as part of MISSION 66, all remaining buildings in the CCC camp area were removed.² The CCC camp baseball field has since been turned into a campground parking area. There still remain some foundations and stone walkways that are evidence of the work camp. A large midden (most likely CCC camp related) also exists near the base of a nearby sandstone cliff. The grounds have not been inventoried for historic archeology thus the site's eligibility under criterion D has not been determined.

As the physical remains of CCC base camps are now primarily archeological, the permanent roads and buildings of Colorado National Monument are often the only tangible evidence to visitors that hundreds of men labored there during the Great Depression. The rustic style of architecture displays the history of the development of Colorado National Monument, and also reflects the craftsmanship of the CCC and the LEMs (local experienced men). Employed for various assignments, enrollees of the CCC were essential in the development of many parks and other government facilities. In Colorado National Monument, the CCC, LEMs, and workers from other relief agencies, not only supplied valuable labor in the construction of park facilities for administrative use but, with the construction of Rim Rock Drive, also opened up the park for thousands of visitors.

The four buildings in the utility area are good examples of the design methodology of National Park Service Rustic Architecture, with its emphasis on the use of natural and native materials. The topography of Colorado National Monument is a spectacular display of carved sandstone monoliths and valleys amongst semi-desert terrain. In the construction of these buildings, architects, landscape architects, and the CCC manipulated native stone and wood supports to blend with the surrounding landscape. Earthtones are the predominant colors, with natural cream to red for the stone and brown and rust for the wood supports. The buildings were designed in such a way as to not intrude on the natural landscape, but to blend with the terrain and to be in harmony with their surroundings. The construction techniques of the CCC are also exemplified in these buildings. Through the use of native materials and stone masonry craftsmanship, the structures reflect the National Park Service's design philosophy of maintaining a sense of rusticity in construction. Unified in design and construction techniques, the buildings in the Saddlehorn Utility Area represent the public relief projects of the Civilian Conservation Corps and the rustic architecture design philosophy that prevailed in the National Park Service during the 1930s.

² MISSION 66 was a ten-year service-wide program instituted by the National Park Service in 1956 to upgrade and expand park facilities.

9. Major Bibliographical References

Baume, Lawrence and Mildred Harris, National Register of Historic Places Draft Nomination, Colorado National Monument, National Park Service, Rocky Mountain Regional Office, Denver, 1987.

Good, Albert, Park Structures and Facilities, U.S. Department of the Interior, National Park Service, Branch of Planning, Washington, D.C., 1935.

(X) See continuation sheet

Previous documentation on file (NPS):

preliminary determination of individual listing (36 CFR 67) has been requested
 previously listed in the National Register
 previously determined eligible by the National Register
 designated a National Historic Landmark
 recorded by Historic American Buildings Survey # CO-74
 recorded by Historic American Engineering Record # _____

Primary location of additional data:
 State Historic Preservation Office
 Other State agency
 Federal agency
 Local government
 University
 Other
Specify Repository:
Park files, COLM

10. Geographical Data

Acreeage of property less than one acre

UTM References

A 1/2 6/9/5/6/0/0 4/3/3/0/2/7/0
Zone Easting Northing

B / / / / / / / / / / / /
Zone Easting Northing

C / / / / / / / / / / / /
Zone Easting Northing

C / / / / / / / / / / / /
Zone Easting Northing

Verbal Boundary Description

The Saddlehorn Utility Area Historic District is located approximately 800 feet southwest from Rim Rock Drive. At an angle to cardinal directions, the area forms a symmetrical rectangle within rock cliff borders. The linear boundary of the northeast side runs the length of the paved district area to the bordering rock walls, approximately 300 feet. The southeast side measures approximately 175 feet, with the southern most tip just feet away from the rock outcrop. The southwest border repeats the 300 foot measurement of the northeast border. The northwest border measures approximately 175 linear feet. The boundary of the Utility Area allows footage on each side to incorporate the surrounding topography, which was consequential in determining the physical boundary.

Boundary Justification

The boundary encompasses the four historically associated buildings and their immediate setting. It excludes the powder house to the southwest and the residences to the north that were constructed after the historic period. Most are screened from view by vegetation. The boundary is identical to the original one drawn around the utility area in original park planning documents as shown on the accompanying site and topographical maps.

11. Form Prepared By

name/title Kathy McKoy, Historian date: December 28, 1992; rev. 1/94
organization National Park Service, RMRO
street & number 12795 W. Alameda Parkway telephone (303) 969-2878
city or town Denver state CO zip code 80228

United States Department of the Interior
National Park Service

**National Register of Historic Places
Continuation Sheet**

Section number 9 Page 2

Law, Henry, G., Laura E. Soulliere, William C. Tweed, National Park Service Rustic Architecture: 1916-1942, National Park Service, Western Regional Office, Division of Cultural Resource Management, 1977.

Newspaper Articles, Colorado National Monument 1935-1947, National Park Service, Rocky Mountain Region, Denver, CO.

Paige, John, C., The Civilian Conservation Corps and the National Park Service, 1933-1942: An Administrative History, National Park Service, Department of the Interior, 1985.

U. S. Department of the Interior, National Park Service, Denver Service Center Technical Information Center files: Drawing Nos. 3011 B, 2062, 2026, 2031 A & B; Topographical Maps Nos. 4948, 3006, 4963, 4970. Denver, CO.

Williams, Lance, List of Classified Structures survey forms, National Park Service, Rocky Mountain Region, Denver, CO, 1976.

United States Department of the Interior
National Park Service

**National Register of Historic Places
Continuation Sheet**

Section number photographs Page 1

INDEX TO PHOTOGRAPHS

The following information applies to photographs #1-11 listed below:

- 1) Property: Saddlehorn Utility Area Historic District,
Colorado National Monument
- 2) Location: Mesa County, Colorado
- 3) Photographers: Eunice Fedors, Hank Schoch, Kathy McCraney, as noted below
- 4) Date taken: November 1989, September 1990, and April 1992, as noted below
- 5) Location of negatives: National Park Service, Rocky Mountain Regional Office, Denver

The property, its location, and location of negatives is the same as above for photo #12, except photographer and date taken are as follows:

- 3) Photographer: Clayton B. Fraser
- 4) Date taken: September 1984

PHOTO NUMBER	DESCRIPTIVE INFORMATION
1	Roads and Trails Shop (HS-4H), view to SE, Schoch, 9/90
2	Roads and Trails Shop (HS-4H), view to N, Schoch, 9/90
3	Roads and Trails Shop (HS-4H), view to SW, Schoch, 9/90
4	Oil House (HS-5H), view to NE, Schoch, 9/90
5	Oil House (HS-5H), view to NW, Schoch, 9/90
6	Open Storage Building (HS-6H), view to SE, Schoch, 9/90
7	Open Storage Building (HS-6H), view to SW, Schoch, 9/90
8	Open Storage Building (HS-6H), view to N, Schoch, 9/90
9	Building and Utilities Shop (HS-7H), view to NW, Schoch, 9/90
10	Building and Utilities Shop (HS-7H), view to SW, Schoch, 9/90
11	Fuel Island (no number), view to SE, McCraney, 4/92
12	Saddlehorn Utility Area, view to NW, Fraser, 9/84

United States Department of the Interior
National Park Service

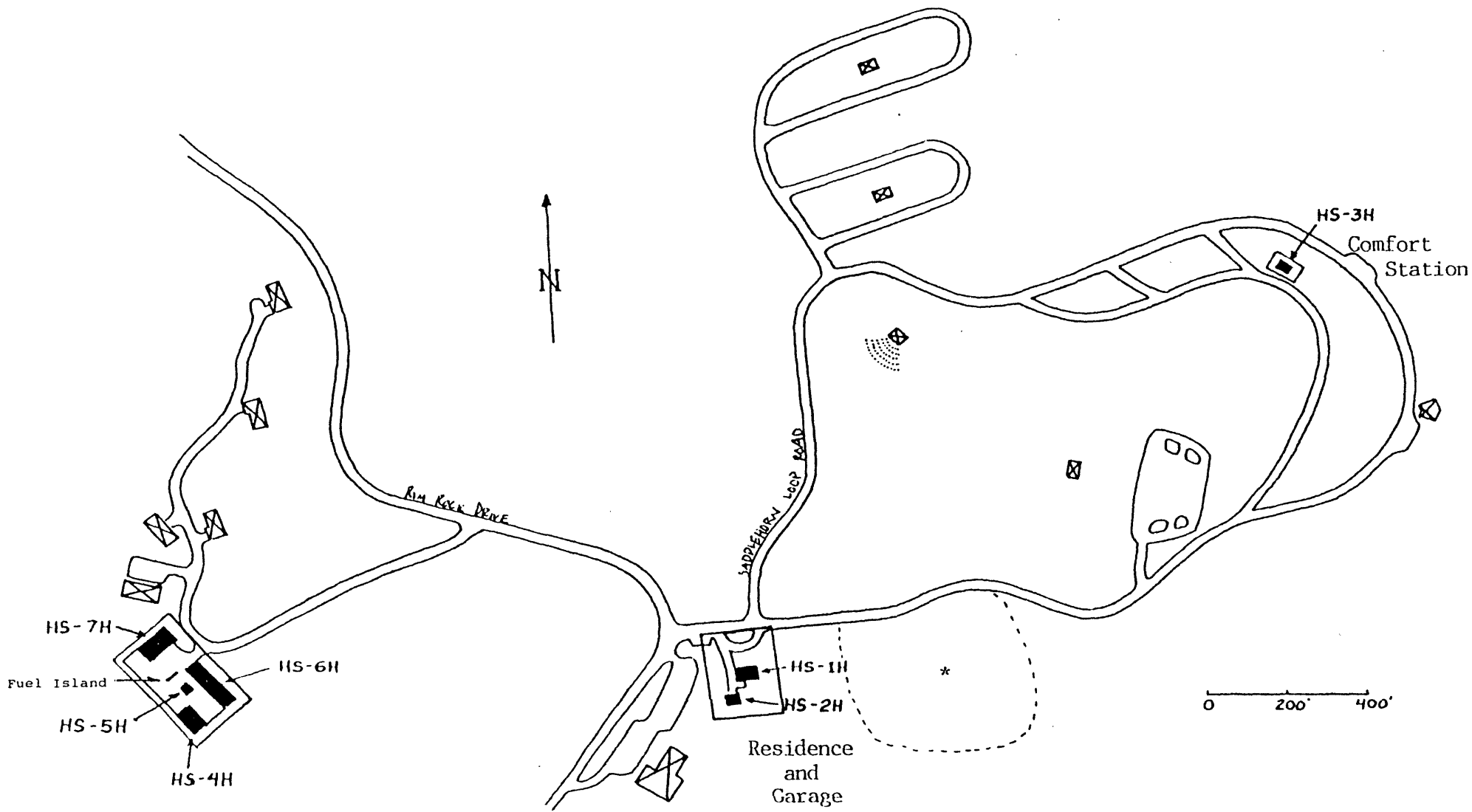
**National Register of Historic Places
Continuation Sheet**

Section number photographs Page 2

The following information applies to historic photograph copies #13-18 listed below:

- 1) Property: Saddlehorn Utility Area Historic District,
Colorado National Monument
- 2) Location: Mesa County, Colorado
- 3) Photographers: unknown
- 4) Date taken: ca. 1949
- 5) Location of originals: National Park Service, Rocky Mountain Regional Office, Denver
(List of Classified Structures files)

PHOTO NUMBER	DESCRIPTIVE INFORMATION
13	Roads and Trails Shop (HS-4H), view to S
14	Oil House (HS-5H), view to SE
15	Open Storage Building (HS-6H), view to E
16	Open Storage Building (HS-6H), view to S
17	Building and Utilities Shop (HS-7H), view to N
18	Building and Utilities Shop (HS-7H), view to E
12	Saddlehorn Utility Area, view to NW, Fraser, 9/84



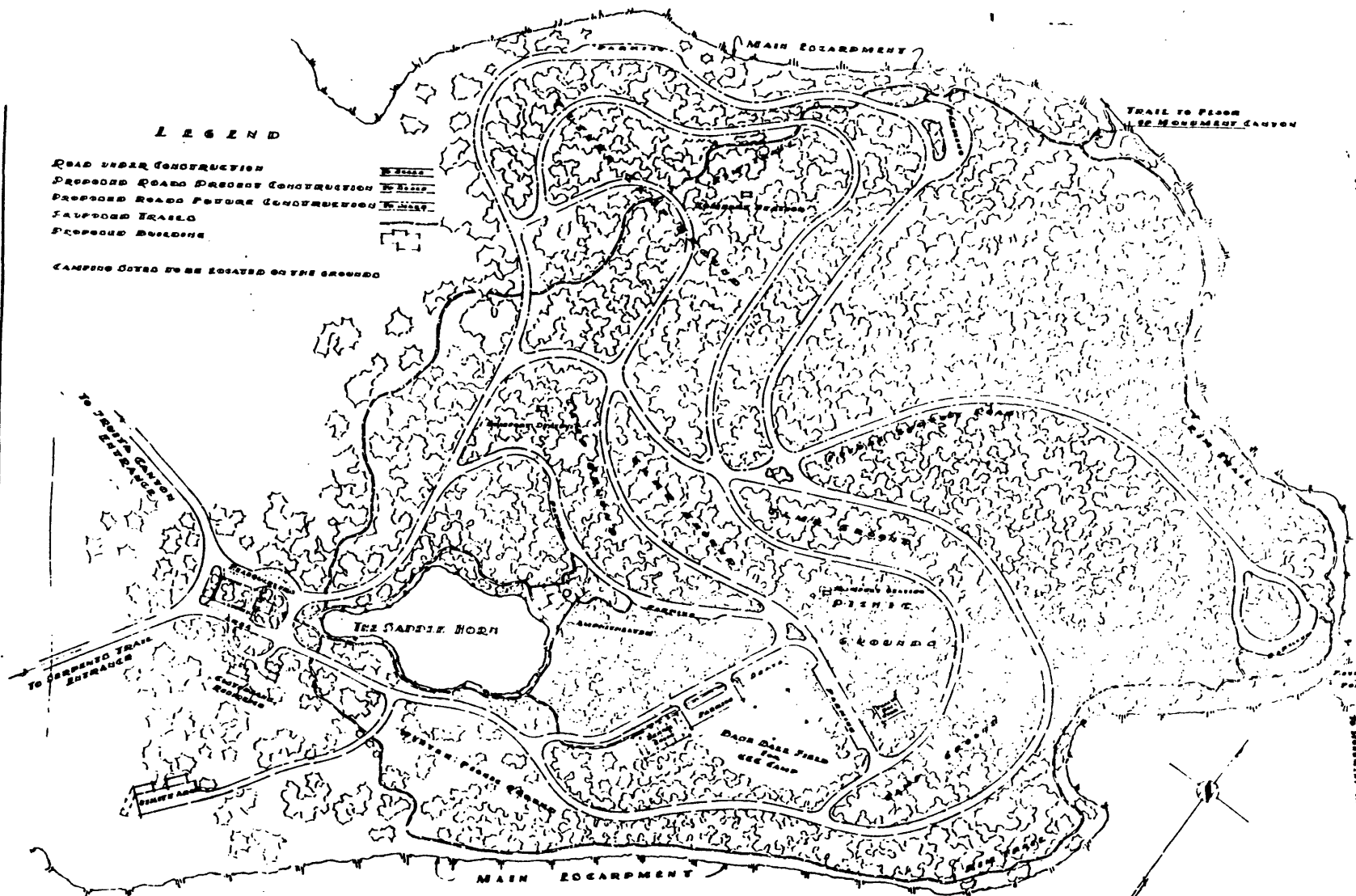
Saddlehorn Utility Area
Historic District

SADDLEHORN HEADQUARTERS & CAMPGROUND
COLORADO NATIONAL MONUMENT

□ rectangles surrounding
resources denote boundaries

*This area was the site
of CCC Camp NM-2-C.

■ contributing
⊠ noncontributing



LEGEND

- ROAD UNDER CONSTRUCTION
 - PROPOSED ROAD PRESENT CONSTRUCTION
 - PROPOSED ROAD FUTURE CONSTRUCTION
 - PROPOSED TRAIL
 - PROPOSED BUILDING
- CAMPERS TO BE LOCATED ON THE GROUND

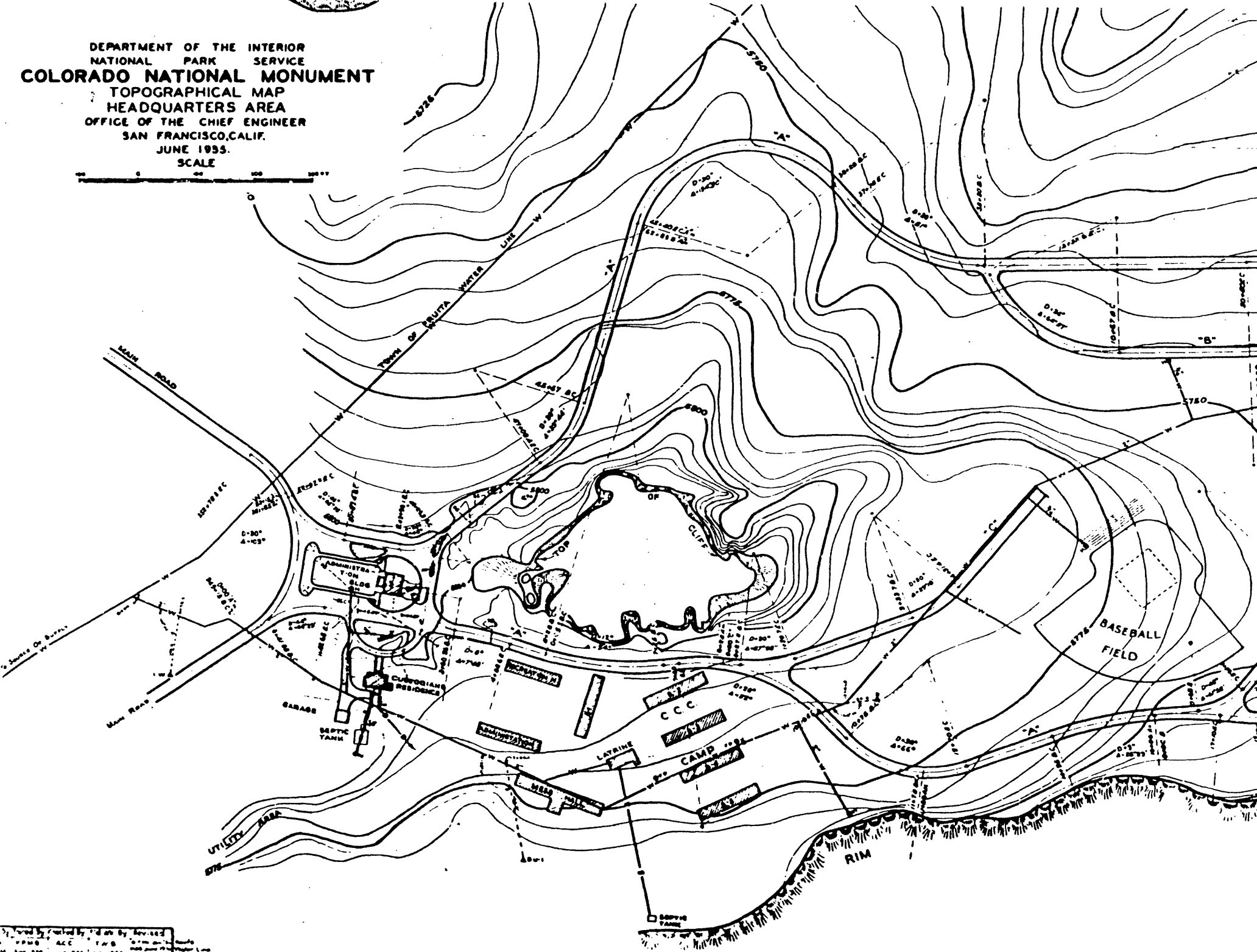
SCALE 1"=100'

HALF-SIZE REPRODUCTION

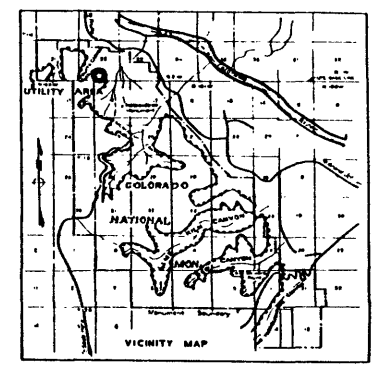
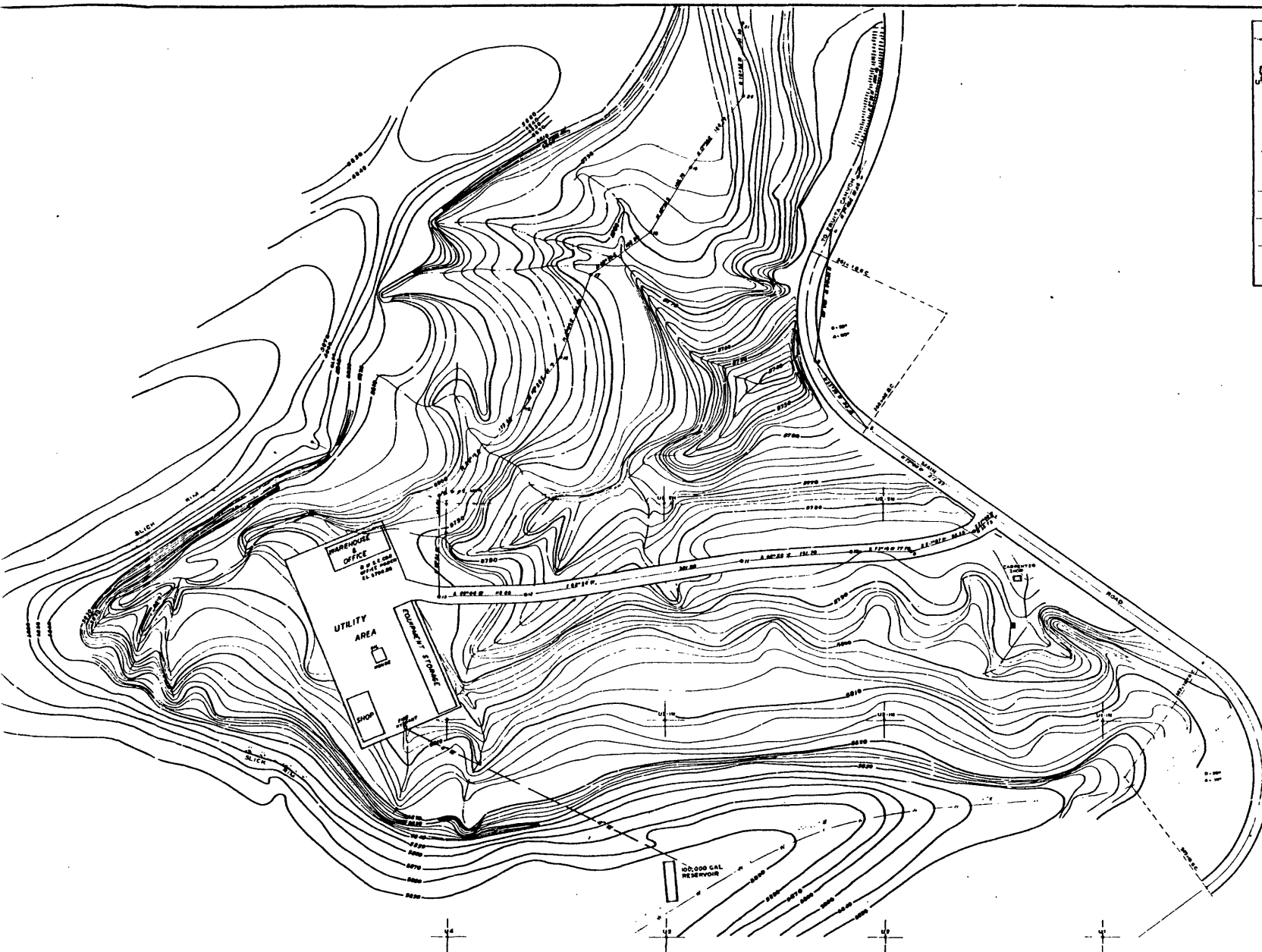
Recommended by <i>[Signature]</i>	Date: 1907	U.S. DEPARTMENT OF INTERIOR, NATIONAL PARKS IMPROVED GENERAL PLAN COLORADO NATIONAL MONUMENT DRAWN BY THE BUREAU OF PLANS, D.C.
Checked by <i>[Signature]</i>	Date: 1907	
Consented <i>[Signature]</i>	Date: 1907	
Approved <i>[Signature]</i>	Date: 1907	

DEPARTMENT OF THE INTERIOR
 NATIONAL PARK SERVICE
COLORADO NATIONAL MONUMENT
 TOPOGRAPHICAL MAP
 HEADQUARTERS AREA
 OFFICE OF THE CHIEF ENGINEER
 SAN FRANCISCO, CALIF.
 JUNE 1935.

SCALE
 0 100 200 300



Printed by contract by the U.S. Government
 WASHINGTON, D.C. 20540
 14 JUN 1935

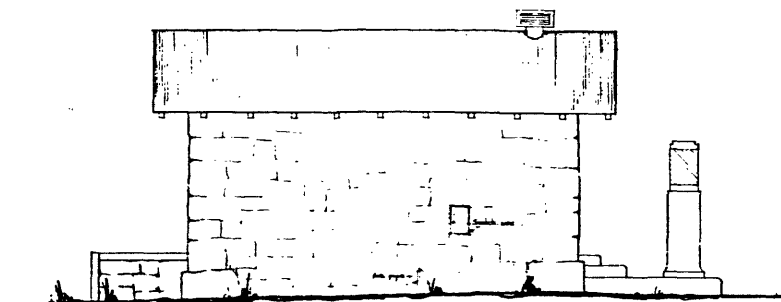


DEPARTMENT OF THE INTERIOR
 NATIONAL PARK SERVICE
COLORADO NATIONAL MONUMENT
 TOPOGRAPHICAL MAP
 UTILITY AREA
 OFFICE OF THE CHIEF ENGINEER
 SAN FRANCISCO, CALIF. SHEET 1 OF 2
 JULY 1956
 SCALE
 1" = 50'

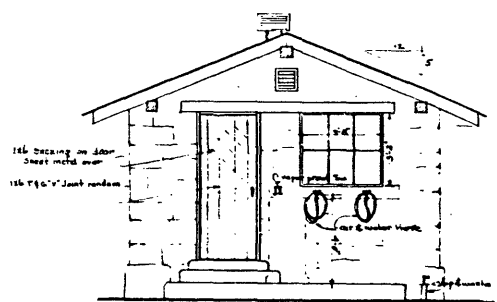
HALF-SIZE REPRODUCTION

NOTE HEADQUARTERS GRID EXTENDED
 TO THIS AREA AND METERS FOR 1:50

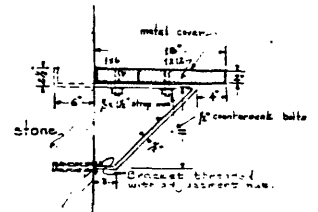
CGS 2578



SIDE ELEVATION
20'-0"

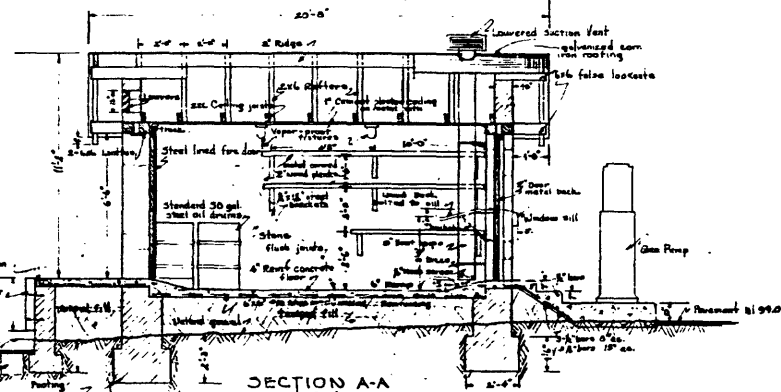


FRONT ELEVATION
3/8" = 1'-0"

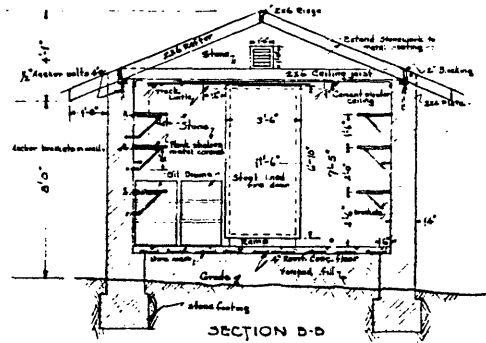


SHelf & BRACKET DET.
1/4" = 1'-0"

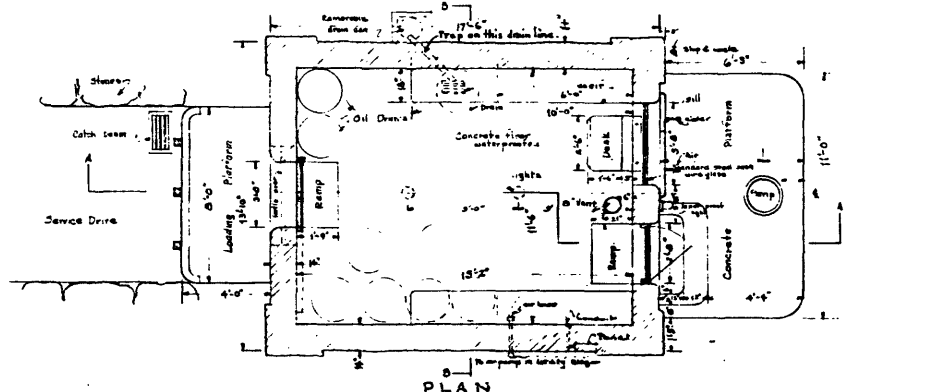
NOTE:
Construction data for Type 'D' flammable liquids storage bldg. taken from suggested ordinance & regulations of National Fire Protection Assn.



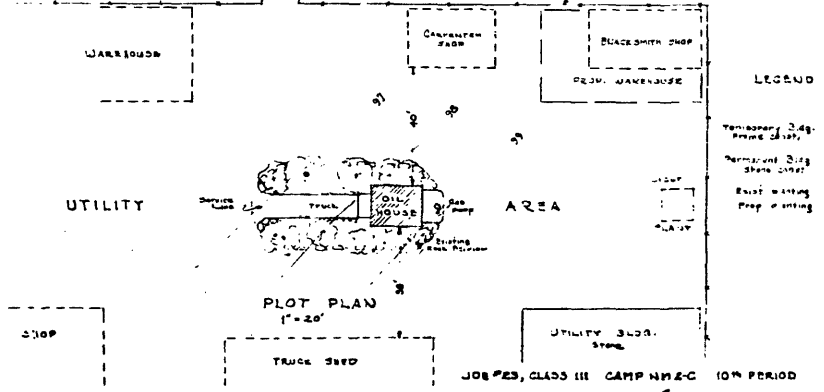
SECTION A-A
3/8" = 1'-0"



SECTION B-B
3/8" = 1'-0"



PLAN
1/4" = 1'-0"



PLOT PLAN
1" = 20'

LEGEND

- Temporary 3/4" Prime Cast
- Permanent 3/4" Stone Cast
- Exist. existing
- Prop. existing

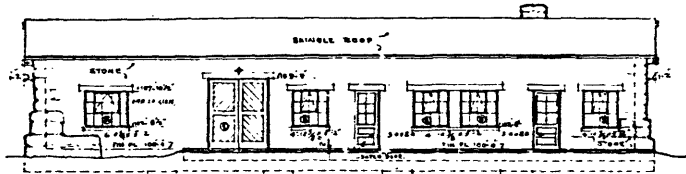
JOB #23, CLASS III CAMP NR#2-C 10th PERIOD

U. S. DEPARTMENT OF THE INTERIOR
NATIONAL PARK SERVICE
BRANCH OF PLANS AND DESIGN

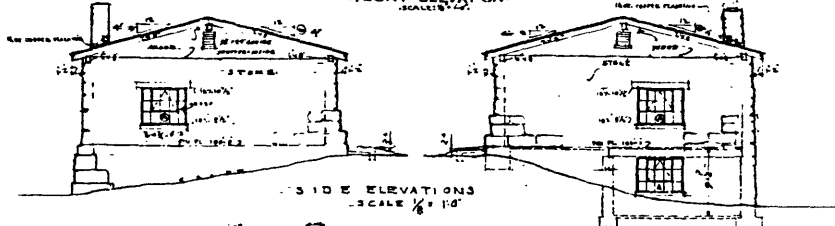
OIL STORAGE BLDG. & UTILITY AREA
COLORADO NATIONAL MONUMENT

HALF-SIZE REPRODUCTION

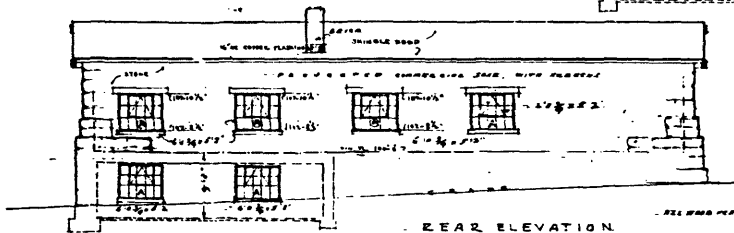
REGION	III
DATE	3/1/52
BY	[Signature]
CHECKED	[Signature]
DATE	3/1/52



FRONT ELEVATION
SCALE 1/4" = 1'-0"

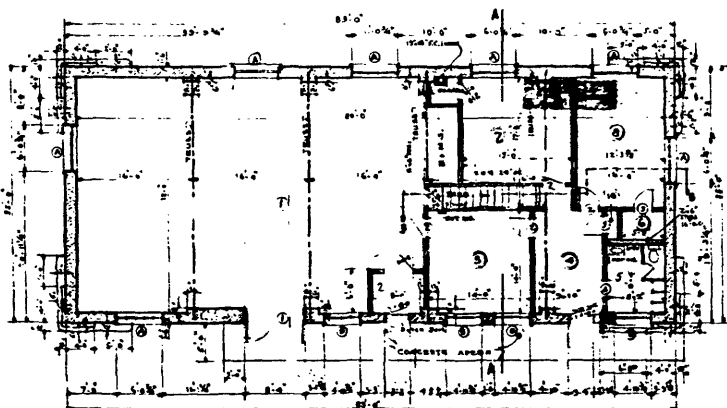


SIDE ELEVATIONS
SCALE 1/4" = 1'-0"

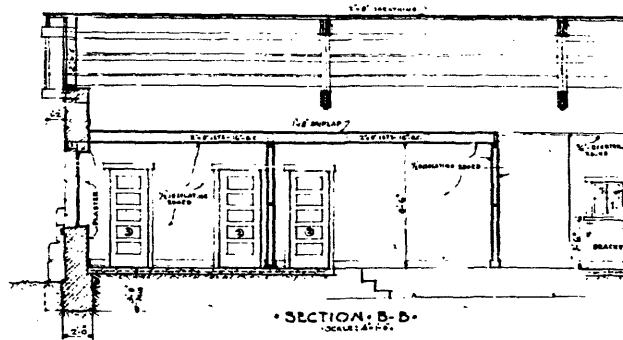


REAR ELEVATION
SCALE 1/4" = 1'-0"

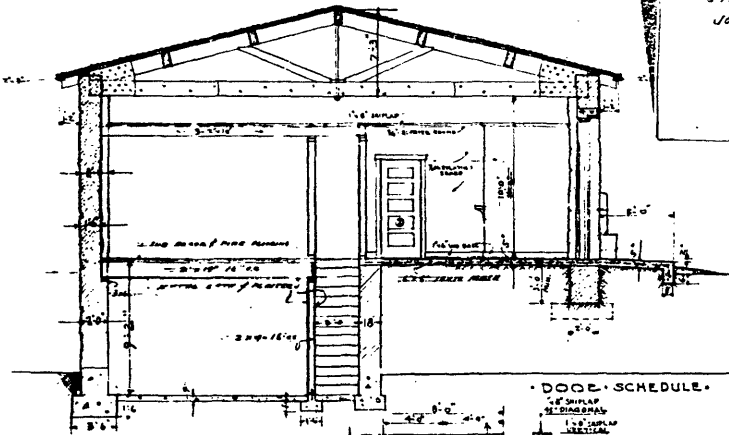
NOTE
ALL WORK FINISHES TO PAINT EXCEPT



FLOOR PLAN
SCALE 1/4" = 1'-0"

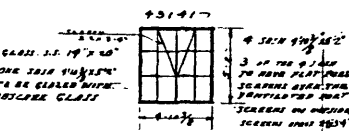
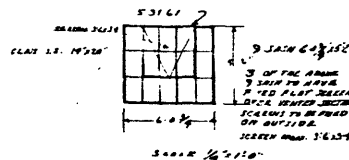


SECTION B-B
SCALE 1/4" = 1'-0"



SECTION A-A
SCALE 1/4" = 1'-0"

STEEL 2" X 4" CORRUGATED PANELS
ALL VENTS TO OPEN UP 2" IN.



STEEL 2" X 4" CORRUGATED PANELS
JOB AT COLORADO NATIONAL MONUMENT

DOOR SCHEDULE

1 DOOR
2 DOORS
3 DOORS

HALF-SIZE REPRODUCTION

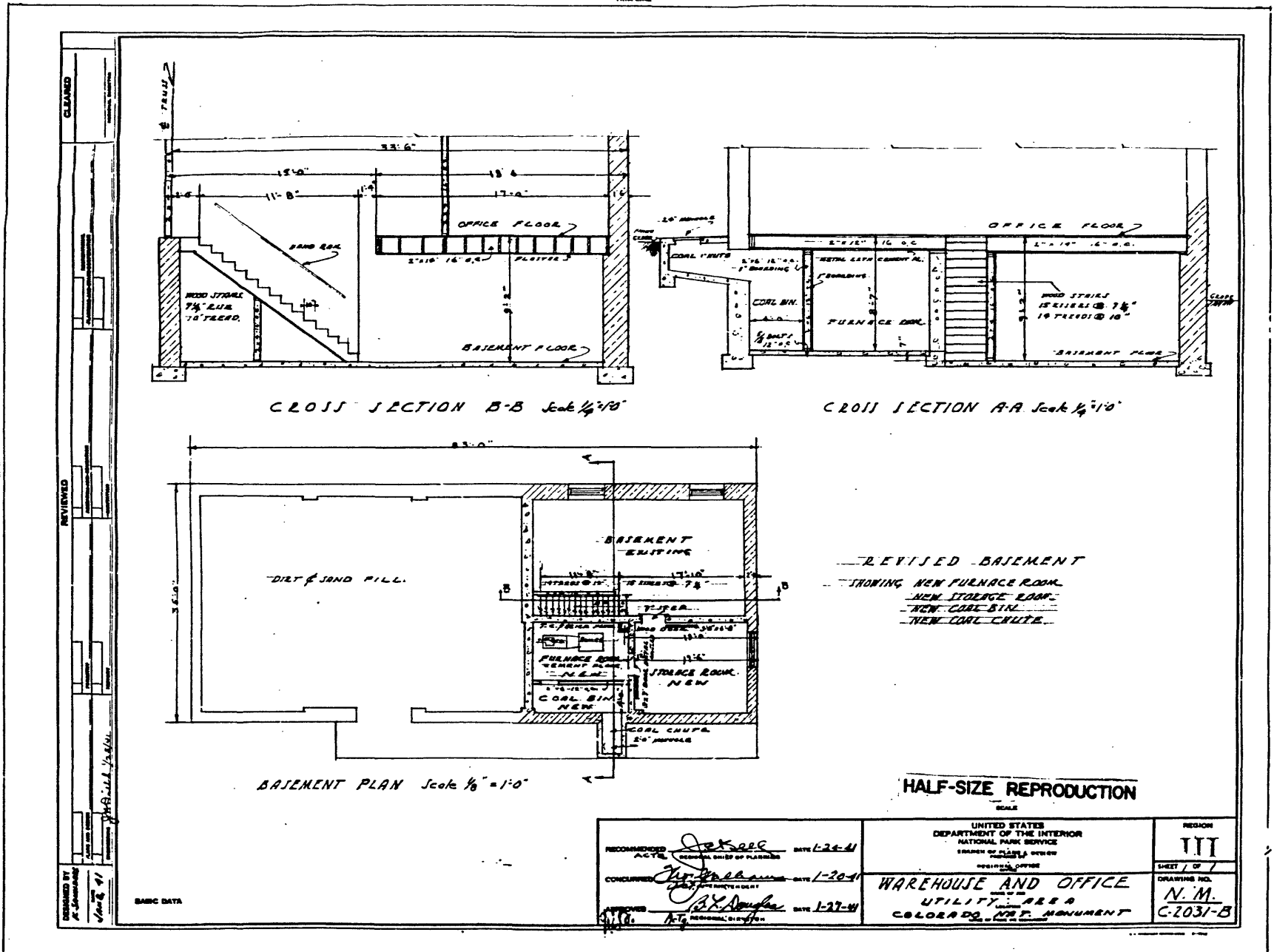
ROOM SCHEDULE

NO.	ROOM	FLOOR	WALL FINISH				CEILING	FLOOR FINISH		
			FRAME	MASONRY	PLASTER	ROOF		WOOD	WOOD	WOOD
1	TOILET	1ST	CONCRETE	BRICK	PLASTER	ROOF	WOOD	WOOD	WOOD	
2	VESTIBULE	1ST	CONCRETE	BRICK	PLASTER	ROOF	WOOD	WOOD	WOOD	
3	OFFICE	1ST	CONCRETE	BRICK	PLASTER	ROOF	WOOD	WOOD	WOOD	
4	ENTRANCE	1ST	CONCRETE	BRICK	PLASTER	ROOF	WOOD	WOOD	WOOD	
5	TOILET	1ST	CONCRETE	BRICK	PLASTER	ROOF	WOOD	WOOD	WOOD	
6	CLOSET	1ST	CONCRETE	BRICK	PLASTER	ROOF	WOOD	WOOD	WOOD	
7	OFFICE	1ST	CONCRETE	BRICK	PLASTER	ROOF	WOOD	WOOD	WOOD	
8	CLOSET	1ST	CONCRETE	BRICK	PLASTER	ROOF	WOOD	WOOD	WOOD	
9	CLOSET	1ST	CONCRETE	BRICK	PLASTER	ROOF	WOOD	WOOD	WOOD	

Prepared by *E. L. ...* 1/19/49
 Checked by *Paul R. ...* 1/15/49
 Drawn by *...* 1/15/49

UNITED STATES
 DEPARTMENT OF THE INTERIOR
 NATIONAL PARK SERVICE
 COLORADO NATIONAL MONUMENT
 WAREHOUSE & OFFICES
 UTILITY AREA
 COLORADO NATIONAL MONUMENT

III
 N.M.
 C-2031-A



Buildings and Utilities Shop, HS-7H
 Basement Plan

United States Department of the Interior
National Park Service

National Register of Historic Places Continuation Sheet

Section number _____ Page _____

SUPPLEMENTARY LISTING RECORD

NRIS Reference Number: 94000308

Date Listed: 4/21/94

Saddlehorn Utility Area Historic District, Mesa
Property Name County

CO
State

Colorado National Monument MPS
Multiple Name

This property is listed in the National Register of Historic Places in accordance with the attached nomination documentation subject to the following exceptions, exclusions, or amendments, notwithstanding the National Park Service certification included in the nomination documentation.

Beth Baland
Signature of the Keeper

5/4/94
Date of Action

=====
Amended Items in Nomination:

The period of significance is 1937-1942. This information was verified by Kathy McKoy, NPS RMRO.

DISTRIBUTION:

- National Register property file
- Nominating Authority (without nomination attachment)