

UNITED STATES DEPARTMENT OF THE INTERIOR
NATIONAL PARK SERVICE

NATIONAL REGISTER OF HISTORIC PLACES
EVALUATION/RETURN SHEET

REQUESTED ACTION: REMOVAL

PROPERTY Central Elementary School
NAME:

MULTIPLE Union City, Tennessee MPS
NAME:

STATE & COUNTY: TENNESSEE, Obion

DATE RECEIVED: 10/09/15 DATE OF PENDING LIST:
DATE OF 16TH DAY: DATE OF 45TH DAY: 11/24/15
DATE OF WEEKLY LIST:

REFERENCE NUMBER: 01000141

REASONS FOR REVIEW:

APPEAL: N DATA PROBLEM: N LANDSCAPE: N LESS THAN 50 YEARS: N
OTHER: N PDIL: N PERIOD: N PROGRAM UNAPPROVED: N
REQUEST: N SAMPLE: N SLR DRAFT: N NATIONAL: N

COMMENT WAIVER: N

☒ ACCEPT ☐ RETURN ☐ REJECT 11-24-15 DATE

ABSTRACT/SUMMARY COMMENTS:

REMOVED
from
National Register

RECOM./CRITERIA Remove

REVIEWER Edson Beall

DISCIPLINE History

TELEPHONE _____

DATE 11-24-15

DOCUMENTATION see attached comments Y/N see attached SLR Y/N

If a nomination is returned to the nominating authority, the nomination is no longer under consideration by the NPS.

United States Department of the Interior
National Park Service

National Register of Historic Places Continuation Sheet

RECEIVED 2280

OCT - 9 2015

Nat. Register of Historic Places
National Park Service

Section number N/A Page 1

Central Elementary School
Obion County, Tennessee

The Central Elementary School located at 512 East College Street in Union City, Obion County, Tennessee was listed on the National Register on February 16, 2001. This two-story, Public Works Administration (PWA) Modern school brick building was built in 1936 and was listed under Criterion C for its local significance in architecture. The school building was demolished on June 4, 2014. As a result, the Central Elementary School has lost the significance for which it was listed and no longer retains integrity of setting, location, design, materials, workmanship, association and feeling. Therefore, the Central Elementary School should be removed from the National Register.



Claudette Stager, Deputy State Historic Preservation Officer



Date

United States Department of the Interior
National Park Service

National Register of Historic Places Continuation Sheet

Section number

N/A

Page

2

Central Elementary School
Obion County, Tennessee



Figure 1: Façade of the Central Elementary School in 2001 at the time of National Register listing.



Figure 2: Façade of the Central Elementary School in 2001 at the time of National Register listing.

United States Department of the Interior
National Park Service

National Register of Historic Places Continuation Sheet

Section number

N/A

Page

3

Central Elementary School
Obion County, Tennessee



Figure 3: One of the main entrances and detailing of the Central Elementary School in 2001 at the time of National Register listing.

United States Department of the Interior
National Park Service

National Register of Historic Places Continuation Sheet

Section number

N/A

Page

4

Central Elementary School
Obion County, Tennessee



Figure 4: Centralized inner courtyard of the Central Elementary School in 2001 at the time of National Register listing.

United States Department of the Interior
National Park Service

National Register of Historic Places Continuation Sheet

Section number

N/A

Page

5

Central Elementary School
Obion County, Tennessee



Figure 5: View of the windows on the side elevation in 2007 at the time of National Register listing.

United States Department of the Interior
National Park Service

National Register of Historic Places Continuation Sheet

Section number N/A Page 6

Central Elementary School
Obion County, Tennessee



Figure 6: Interior of the Gym and Stage area of the Central Elementary School in 2001 at the time of National Register listing.

United States Department of the Interior
National Park Service

National Register of Historic Places Continuation Sheet

Section number

N/A

Page

7

Central Elementary School
Obion County, Tennessee



Figure 7: Main façade of the Central Elementary School in July of 2007.

United States Department of the Interior
National Park Service

National Register of Historic Places Continuation Sheet

Section number

N/A

Page

8

Central Elementary School
Obion County, Tennessee



Figure 8: Main façade of the Central Elementary School in July of 2007.

United States Department of the Interior
National Park Service

National Register of Historic Places Continuation Sheet

Section number N/A Page 9

Central Elementary School
Obion County, Tennessee



Figure 9: Main façade of the Central Elementary School in July of 2007.

United States Department of the Interior
National Park Service

National Register of Historic Places Continuation Sheet

Section number N/A Page 10

Central Elementary School
Obion County, Tennessee



Figure 10: Main façade of the Central Elementary School in July of 2007.

United States Department of the Interior
National Park Service

National Register of Historic Places Continuation Sheet

Section number

N/A

Page

11

Central Elementary School
Obion County, Tennessee



Figure 11: Side elevation of the Central Elementary School in July of 2007.

United States Department of the Interior
National Park Service

National Register of Historic Places Continuation Sheet

Section number N/A Page 12

Central Elementary School
Obion County, Tennessee



Figure 12: Rear and side elevation of the Central Elementary School in July of 2007.

United States Department of the Interior
National Park Service

National Register of Historic Places Continuation Sheet

Section number

N/A

Page

13

Central Elementary School
Obion County, Tennessee



Figure 13: Current site of the Central Elementary School in Union City, Obion County showing clean-up underway after demolition.

United States Department of the Interior
National Park Service

National Register of Historic Places Continuation Sheet

Section number N/A Page 14

Central Elementary School
Obion County, Tennessee



Figure 14: Current site of the Central Elementary School in Union City, Obion County showing clean-up underway after demolition.

United States Department of the Interior
National Park Service

National Register of Historic Places Continuation Sheet

Section number

N/A

Page

15

Central Elementary School
Obion County, Tennessee



Figure 15: Current site of the Central Elementary School in Union City, Obion County showing clean-up underway after demolition.

United States Department of the Interior
National Park Service

National Register of Historic Places Continuation Sheet

Section number

N/A

Page

16

Central Elementary School
Obion County, Tennessee



Figure 16: Current site of the Central Elementary School in Union City, Obion County showing clean-up underway after demolition.

United States Department of the Interior
National Park Service

National Register of Historic Places Continuation Sheet

Section number

N/A

Page

17

Central Elementary School
Obion County, Tennessee



Figure 17: Current site of the Central Elementary School in Union City, Obion County showing clean-up underway after demolition.

United States Department of the Interior
National Park Service

National Register of Historic Places Continuation Sheet

Section number N/A Page 18

Central Elementary School
Obion County, Tennessee



Figure 18: Current site of the Central Elementary School in Union City, Obion County showing clean-up underway after demolition.

United States Department of the Interior
National Park Service

National Register of Historic Places
Registration Form

This form is for use in nominating or requesting determinations for individual properties and districts. See instructions in *How to Complete the National Register of Historic Places registration Form* (National Register Bulletin 16A). Complete each item by marking "x" in the appropriate box or by entering the information requested. If an item does not apply to the property being documented, enter "N/A" for "not applicable." For functions, architectural classification, materials, and areas of significance, enter only categories and subcategories from the instructions. Place additional entries and narrative items on continuation sheets (NPS Form 10-900a). Use a typewriter, word processor, or computer to complete all items.

1. Name of Property

historic name Central Elementary School

other names/site number N/A

2. Location

street & number 512 East College Street

☐ not for publication N/A

city or town Union City

☐ vicinity N/A

state Tennessee

code TN

county Obion

code 131

zip code 38261

3. State/Federal Agency Certification

As the designated authority under the National Historic Preservation Act, as amended, I hereby certify that this ☒ nomination ☐ request for determination of eligibility meets the documentation standards for registering properties in the National Register of Historic Places and meets the procedural and professional requirements set for in 36 CFR Part 60. In my opinion, the property ☒ meets ☐ does not meet the National Register criteria. I recommend that this property be considered significant ☐ nationally ☐ statewide ☒ locally. (See continuation sheet for additional comments.)

Herbert L. Hays
Signature of certifying official/Title

1/10/01
Date

Deputy State Historic Preservation Officer, Tennessee Historical Commission

State or Federal agency and bureau

In my opinion, the property ☐ meets ☐ does not meet the National Register criteria. (☐ See Continuation sheet for additional comments.)

Signature of certifying official/Title

Date

State or Federal agency and bureau

4. National Park Service Certification

I hereby certify that the property is:

☒ entered in the National Register.

☐ See continuation sheet

☐ determined eligible for the National Register.

☐ See continuation sheet

☐ determined not eligible for the National Register

☐ removed from the National Register.

☐ other,

(explain:)

Edson H. Beall
Signature of the Keeper

2/16/01
Date of Action

Central Elementary School
Name of Property

Obion County, TN
County and State

5. Classification

Ownership of Property

(Check as many boxes as apply)

- ☐ private
☒ public-local
☐ public-State
☐ public-Federal

Category of Property

(Check only one box)

- ☒ building(s)
☐ district
☐ site
☐ structure
☐ object

Number of Resources within Property

(Do not include previously listed resources in count)

Contributing

Noncontributing

1

buildings
sites
structures
objects

1

0

Total

Name of related multiple property listing

(Enter "N/A" if property is not part of a multiple property listing.)

Historic & Architectural Resources of Union City, TN

Number of Contributing resources previously listed in the National Register

0

6. Function or Use

Historic Functions

(Enter categories from instructions)

EDUCATION: school

Current Functions

(Enter categories from instructions)

EDUCATION: school

7. Description

Architectural Classification

(Enter categories from instructions)

OTHER: PWA Modern

Materials

(Enter categories from instructions)

foundation CONCRETE

walls BRICK, CONCRETE, METAL

roof ASPHALT

other METAL, GLASS, CONCRETE

Narrative Description

(Describe the historic and current condition of the property on one or more continuation sheets.)

United States Department of the Interior
National Park ServiceNational Register of Historic Places
Continuation SheetSection number 7 Page 1Central Elementary School
Obion County, TN

7. DESCRIPTION

The Central Elementary School, in Union City, Tennessee (pop. circa 12,000), is an example of the architectural style associated with the work of the Public Works Administration (PWA) and commonly known as PWA Modern. This two story building is roughly laid out in a rectangle with several recessed and projected areas. One story rectangular wings were added to the building in 1976. The new construction was compatible to the original design and changed nothing significant in the older school. Only the original doorways were removed to allow access from the old to the new sections. The wings form flanking "Ts" to the main central core of the school. Designed to be fireproof, Central School is constructed mainly of brick and concrete. The exterior of the building is mainly American bond brick with concrete mortar serving as reinforcement while also adding some stylistic detail. It was designed in 1936 by the Nashville based architectural firm of Tisdale and Pinson. Tisdale and Pinson also designed another PWA elementary school, Eakin School in Nashville, in 1935.

The building is located upon a small knoll that is about two feet above street level. There are two sets of concrete stairs leading up to the main (south) entrance of the school. These two sets of stairs merge around the school's flagpole into a sidewalk that ends at the steps leading into the entrance of the central courtyard of the school. Two original concrete urns about three feet high flank this entrance. Beyond this entrance lies the large courtyard containing trees, shrubs, grass, and a "U" shaped sidewalk.

The south facade has three bays including a projecting central section that contains one bay. The middle bay in this section is designed to be the main entrance. A flat asphalt roofline dominates this area and underneath another slight projection in the central section of this bay accents the stylized temple entrance. This entrance is divided into three openings by four concrete Tuscan columns. These columns are in two rows where a walkway forms in between. On the walls is the bronze PWA dedication plaque. Flanking these columns, but attached to the brick walls of the building, are four stylized, concrete, Tuscan pilasters topped with fluted capitals. These pilasters give the appearance of supporting the concrete entablature that extends the length of this slightly projected section. Located on the center of this entablature is inscribed the words "Central Elementary School" along with four circles containing a stylized flower in relief. Directly above this entablature is a concrete stringcourse that only extends the length of the slightly projected section of this middle bay.

Directly beyond this entranceway and the courtyard is the actual main door to the school. Three sets of original metal and glass doors topped by concrete blind arches consisting of three keystones each are located on this slightly projecting portion of this elevation. Above these doors are the vertical, six-paned windows for the second floor. Two different sizes of windows

United States Department of the Interior
National Park Service**National Register of Historic Places
Continuation Sheet**Section number 7 Page 2Central Elementary School
Obion County, TN

can be seen on this elevation. Three six-paned windows are located on the projecting central portion and two three-paned windows are found on the recessed part of the elevation. A concrete stringcourse is located directly above these windows. This stringcourse also runs the length of the other two elevations facing the courtyard. Both also contain the same two sizes of vertical, paned windows on their first and second floors.

The remaining two bays of the south facade mirror each other in their adornment. In the center of the bays is a recessed section set-off by four rows of recessing, or corbelled, bricks. On the first floor of this section is a set of original metal and glass doors that are topped by a glass entablature. Directly above these doors is an original, shallow, iron balcony containing a stylized star in the middle of the iron spandrels. Located on the second floor are two sets of the smaller, three-paned projecting windows. A concrete fluted entablature containing a center circle in relief caps this section. Also, on the second floor on either side of this section, are two windows filled-in by concrete that contains the same fluting at the top. Flanking the doorways are two exterior decorative lamps that are original to the building. The Art Deco styled lamps are octagonal and about two feet high, they are decorated with a cast iron "X" turned on its side at the top and bottom of each vertical panel. Two concrete stringcourses are located on these bays, one above the second floor windows and the second dividing the first floor.

The east and west elevations are also dominated by the flat asphalt roof. On the original 1936 building, the same vertical, windows are located on the first and second floors on both elevations. Attached at the east and west ends of the original school are new wings of classrooms, added in 1976. These wings attach at the first floor level with the original building still visible on the second floor. The wings were attached in a "T" fashion by removing an original doorway, enlarging that opening, and then enclosing the opening with the new wing. The wings have corbelled brickwork and stretcher bond brick course construction with headers at the roofline. The east and west wings extend beyond the original building both front (south) and back (north).

The north (rear) elevation of the Central Elementary School is dominated by the flat, asphalt roof and is comprised of three sections. The center section is the most prominent and contains the original gymnasium. East and west of this center section are two classroom sections. The east section contains a recessed area extending from the first to second floor. On the first floor are an original metal door and projecting window in the recessed area and a blind faux window on the non-recessed portion. On the second floor of are two projected windows in the recessed area and another projected window located in the non-recessed area. The center, projecting section is much plainer with two concrete, blind faux windows in the center, one at both the east and west ends, and six filled-in windows at the bottom level. Also some plumbing and electrical equipment is showing on this area. The sides of this projecting center section each show six

United States Department of the Interior
National Park ServiceNational Register of Historic Places
Continuation SheetSection number 7 Page 3Central Elementary School
Obion County, TN

original, large multi-pane semi-circular arched windows. These windows are set-off from one another by projecting brick pilasters connected at the top by brick architraves consisting of stylized keystones in their centers. At the ends of these sides is a projected area containing a set of concrete steps leading up to a metal door topped by a glass transom and then a brick entablature where a exterior light fixture exists. On the second floor of these projected areas is a vertical, eight-paned projected window and ventilator. Also a brick stringcourse is located near the top of these projected areas. On the side closest to the west section of this elevation is an attached, original concrete block storage shed. A brick stringcourse, located at the bottom, surrounds all three sides of this projecting section. The third (west) section of the north elevation is mostly obscured by a new storage area, added circa 1976, which is part of the new wing additions. However, the second floor and some of the original projected windows are still visible above the one story addition.

The original interior of the Central Elementary School was roughly laid out in an "H" plan with a few rooms jutting off such as the gym, kitchen, and front offices. The 1976 classroom wings then formed Ts to the original wings of the 1936 school. Entrances are at the north and south elevations, with the south facade serving as the main entrance. The walls of the interior corridors consist of original plaster and have commercial grade rubber baseboards at the carpet line. Underneath the windows of these corridors is a row of yellow, 8"x8" glazed tile which can also be seen around the water fountains in a 1"x1" size; the tile work is another original design feature of the school. The ceiling is dropped acoustic tile added circa 1950. The floor consists of a commercial grade carpet in combination with the same yellow, 4"x4" glazed tile under the water fountains. Sets of double metal doors separate the original building from the new wing additions and single metal doors topped by glass transoms allow entrance into the classrooms. The interior of the additions is very basic. Walls in the 1976 additions are plasterboard and the ceilings are covered with acoustical tiles.

The two original stairwells located at the east and west ends of the building, show the same original plaster walls to the second floor. Original walnut hand railings trim the low walls defining the stairwell. The same commercial grade carpet is present on the landings with the actual stair risers and treads consisting of matching walnut wood. Both sets of stairs turn 180 degrees to the second floor where the same original plaster corridors lead into more classrooms. The second floor has one large hallway off of which are two smaller hallways, forming a "U".

The historic classrooms of Central Elementary School still retain the majority of their original features. The walls are original plaster and have the same commercial grade rubber baseboards as the corridors. Yellow, 8"x8" glazed tile is molded around the bottom sill of the window. The ceilings are dropped, acoustic tile added circa 1950. The floor is covered in the

United States Department of the Interior
National Park Service

National Register of Historic Places Continuation Sheet

Section number 7 Page 4

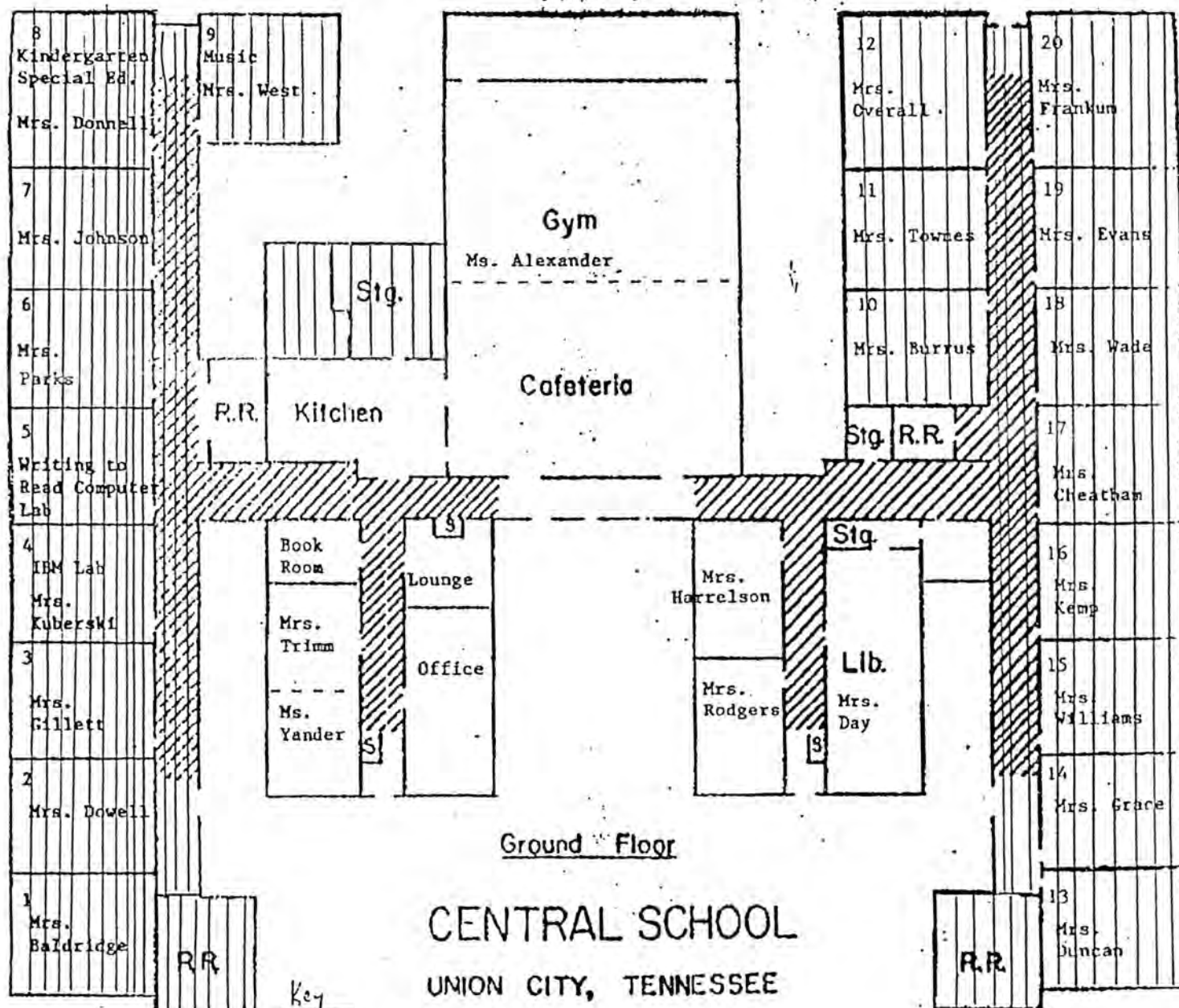
Central Elementary School
Obion County, TN

same commercial grade carpet as seen in the corridors. Other historic features include the blackboards, bulletin boards, and metal lockers (ca. 1950).

The gymnasium, located at the rear directly across from the main entrance, is now also used as the cafeteria. The main entrance to this room is from the south with an exterior entrance on both the east and west walls. The main (south) entrance faces the original stage. This stage is set roughly four feet off the floor. Two stylized, fluted columns connected by a stylized entablature and two brackets frame the stage to the ceiling with the walls being plastered in this area. The floor of the stage is wood and the vents for the central air and heat, added circa 1950, are located in the wall above. On either side of the stage, walls are composed of concrete block three-fourths of the way up and then become brick. The other three walls in this room consist of only brick. On east and west walls are the original semi-circular windows that reach almost from floor to ceiling. The original wood floor, acoustic tile ceiling, and dropped light fixtures are still intact. On the ceiling heating and cooling systems were installed circa 1950.

The front office of Central Elementary School is located at the south side of the building. The original plaster walls with commercial grade, rubber baseboards are continued into this space. The ceiling is the dropped acoustic, tile ceiling, added circa 1950. The flooring is the same commercial grade carpet. An original, large office desk, which is constructed of plywood with individual mailboxes and pewter knobs, is located here.

Overall, a great deal of historical integrity has been retained on the interior and exterior of Central Elementary School. The new classroom wings of 1976 have allowed city officials to keep this historic building in use and of value to the community. Situated as they are at the ends of hallways of the original building, the wings are not significantly intrusive to the historic fabric the building. From the street, the original impressive PWA Modern entrance dominates while at the rear, the Palladian windows of the original gymnasium are the most prominent architectural details. On the interior, original classroom spaces, architectural details such as the tile work, original staircases, and the plaster walls remain to convey the original intent and dignity of the architectural design. Thus, Central Elementary School is a good example of how a significant PWA-era school can be expanded and adapted to meet the needs of communities some sixty years after original construction.

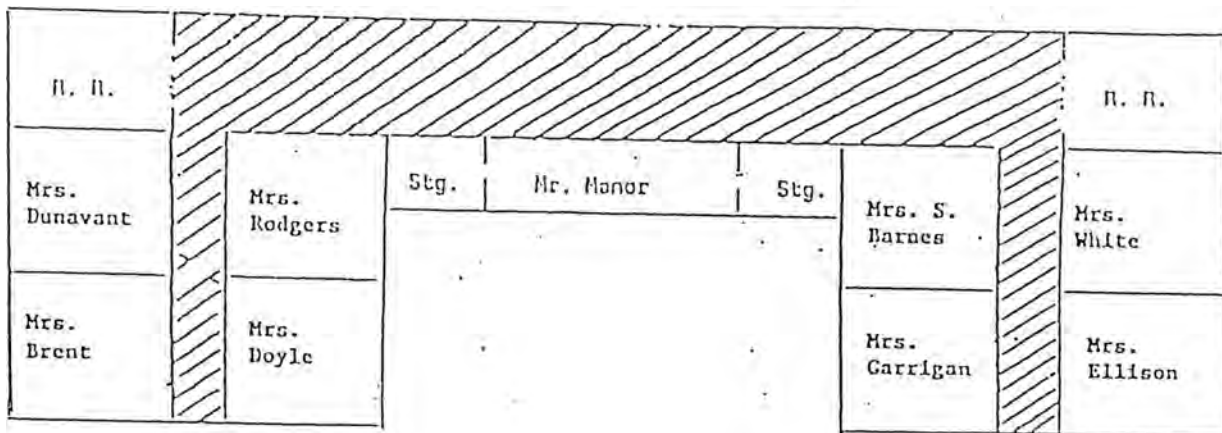
United States Department of the Interior
National Park ServiceNational Register of Historic Places
Continuation SheetSection number 7 Page 5Central Elementary School
Obion County, TN

United States Department of the Interior
National Park Service

National Register of Historic Places Continuation Sheet

Section number 7 Page 6

Central Elementary School
Obion County, TN



Second Floor

CENTRAL SCHOOL
UNION CITY, TENNESSEE

8. Statement of Significance**Applicable National Register Criteria**

(Mark "x" in one or more boxes for the criteria qualifying the property for National Register listing.)

☐ **A** Property is associated with events that have made a significant contribution to the broad patterns of our history.☐ **B** Property is associated with the lives of persons significant in our past.☒ **C** Property embodies the distinctive characteristics of a type, period, or method of construction or represents the work of a master, or possesses high artistic values, or represents a significant and distinguishable entity whose components lack individual distinction.☐ **D** Property has yielded, or is likely to yield, information important in prehistory or history.**Criteria Considerations** N/A

(Mark "x" in all boxes that apply.)

Property is:

☐ **A** owned by a religious institution or used for religious purposes.☐ **B** removed from its original location.☐ **C** moved from its original location.☐ **D** a cemetery.☐ **E** a reconstructed building, object, or structure.☐ **F** a commemorative property☐ **G** less than 50 year of age or achieved significance within the past 50 years.**Areas of Significance**

(Enter categories from instructions)

ARCHITECTURE

Period of Significance

1936

Significant Dates

1936

Significant Person

(complete if Criterion B is marked)

N/A

Cultural Affiliation

N/A

Architect/Builder

Tisdale and Pinson, Architects

Narrative Statement of Significance

(Explain the significance of the property on one or more continuation sheets.)

9. Major Bibliographical References**Bibliography**

(Cite the books, articles, and other sources used in preparing this form on one or more continuation sheets.)

Previous documentation on file (NPS): N/A☐ preliminary determination of individual listing (36 CFR 67) has been requested☐ previously listed in the National Register☐ Previously determined eligible by the National Register☐ designated a National Historic Landmark☐ recorded by Historic American Buildings Survey # _____☐ recorded by Historic American Engineering Record # _____**Primary location of additional data:**☒ State Historic Preservation Office☐ Other State Agency☐ Federal Agency☐ Local Government☒ University☐ Other

Name of repository:

MTSU Center for Historic Preservation

Central Elementary School
Name of Property

Obion County, TN
County and State

10. Geographical Data

Acreage of Property 1.8 acres

UTM References

(place additional UTM references on a continuation sheet.)

1 16 316060 4033250
Zone Easting Northing
2

Union City, TN 427 NE

3
Zone Easting Northing
4
☐ See continuation sheet

Verbal Boundary Description

(Describe the boundaries of the property on a continuation sheet.)

Boundary Justification

(Explain why the boundaries were selected on a continuation sheet.)

11. Form Prepared By

name/title Rebecca Smith
organization MTSU Center for Historic Preservation date May 1998
street & number Box 80 MTSU telephone 615 898-2947
city or town Murfreesboro state TN zip code 37132

Additional Documentation

submit the following items with the completed form:

Continuation Sheets

Maps

A USGS map (7.5 0r 15 minute series) indicating the property's location

A Sketch map for historic districts and properties having large acreage or numerous resources.

Photographs

Representative black and white photographs of the property.

Additional items

(Check with the SHPO) or FPO for any additional items

Property Owner

(Complete this item at the request of SHPO or FPO.)

name City of Union City (contact persons: Don Thornton, City Manager and Joyce Stephens, Principal 885-6881)
street & number PO Box 9 and 512 East College St. telephone 901 885-1342
city or town Union City state TN zip code 38281

Paperwork Reduction Act Statement: This information is being collected for applications to the National Register of Historic Places to nominate properties for listing or determine eligibility for listing, to list properties, and to amend existing listing. Response to this request is required to obtain a benefit in accordance with the National Historic Preservation Act, as amended (16 U.S.C. 470 *et seq.*)

Estimated Burden Statement: Public reporting burden for this form is estimated to average 18.1 hours per response including time for reviewing instructions, gathering and maintaining data, and completing and reviewing the form. Direct comments regarding this burden estimate or any aspect of this form to the Chief, Administrative Services Division, National Park Service, P. O. Box 37127, Washington, DC 20013-7127; and the Office of Management and Budget, Paperwork Reductions Projects (1024-0018), Washington, DC 20303.

United States Department of the Interior
National Park Service

National Register of Historic Places Continuation Sheet

Section number 8 Page 7

Central Elementary School
Obion County, TN

8. STATEMENT OF SIGNIFICANCE

Central Elementary School, located in Union City, the seat of Obion County, Tennessee, is eligible for the National Register of Historic Places under Criterion C as a significant example of PWA Modern architecture popular during the New Deal era. It is another of the significant extant historic buildings in Union City that is associated with the federal Public Works Administration program in Obion County. It meets the registration requirements for public buildings and schools listed in the Multiple Property Nomination, "Historic and Architectural Resources of Union City, TN, 1850-1947."

Obion County was established on October 24, 1823. Its boundaries at that time included present day Lake County, which was later established in 1870 and consisted of the land around Reelfoot Lake. Prior to 1832, Obion County's first school was taught by William Rockford in Colonel William Wilson's home that was the same log home that sheltered the first county court in 1824. The early schools tended to be taught in private homes with a limited number of teachers and students. In 1838, pursuant to legislative act, the first school commissioners in Obion County were elected and the student enrollment for the year totaled 1,256. The State Teachers Association continued to labor for better educational opportunities until every county in the state subscribed to the law enacted by the General Assembly in 1873. This law provided for a state superintendent, county superintendent and board of education, a complete system of graded schools, and finally an eight-month school term.

The first school in Union City was said to have been taught in a private dwelling by Ebby Whipple, from Montpelier, Vermont. In 1865, James Fuzzell opened a school in the law office of C.N. Gibbs. In the winter of 1860, a schoolhouse was erected in Union City at the cost of sixteen hundred dollars. This school (non-extant) continued in use until the Civil War, when it served as a hospital for the Federal troops. After the Civil War, private schools flourished. The curriculum of the Union City Athenaeum, conducted by Professor J.W. Hatcher, included Greek, Latin, astronomy, philosophy, and higher mathematics. Fannie Foster taught the primary classes. This school (non-extant) was located on South Home Street and was thought to have opened in or before 1869. The Union City Training School (non-extant) was the last of the important private schools in Union City. The brick structure stood on North First Street and achieved a high reputation as a preparatory school. World War I took nearly two-thirds of the young men students, who volunteered for the military service. The last class to graduate was in 1923.

There were also semi-private schools. In 1871, Green Kimberlin, W. R. Neblett, and A. J. Wyatt, decided to organize a graded school, in Union City, which was opened in the old "John Morgan Hall," once a famous meeting place for the Masons and Odd Fellows. This was the

United States Department of the Interior
National Park ServiceNational Register of Historic Places
Continuation SheetSection number 8 Page 8Central Elementary School
Obion County, TN

Lile-Curlin school (non-extant), organized upon a much larger scale than any of the previous Union City schools. During the last year of this school, there was no tuition charge for the pupils up to the fifth grade. Prior to that four dollars per month for the higher classes, and three dollars for the lower, were the tuition rates.

Another public-private arrangement involved Union City College. In 1880 the school directors of Union City contracted with the trustees of Union City College to teach all the pupils between the ages of six and twenty-one years free of charge, for a compensation of \$250 per month. This arrangement continued until 1881, when the trustees of the college agreed to transfer the school building to the school directors, upon the latter assuming an indebtedness of \$3500 on the school building. Public school funds were then withheld for two years and applied to the payment of this indebtedness and school was taught by private subscription. This was a two-story school (non-extant) located on the Westover school grounds on Florida Avenue.

The Union City public school system proper was instituted in 1879. The year prior, a new brick building (non-extant) was erected on school property donated to Union City by Charles N. Gibbs, which became generally known as "Central," located on East College Street. The contractor and builder was T. L. Bransford. The opening of this building in 1879 was mirrored by another building for the African-American schools, known under the name of Miles Junior High School (non-extant), being built in the northeastern section of Union City. By 1916 increases in school enrollment and attendance had created a demand for more room, which resulted in the erection of a high school building immediately south of Central across College Street, a brick and stone building, three stories high (non-extant).

The first substantial, modern school building in Union City was Central School, which was constructed in 1936-1937 as a Federal PWA project. It replaced the entire group of old buildings on the Gibbs lot north of the high school building. This project, completed at a cost of \$105,000, created classrooms for the Union City Grammar School as well as an auditorium and gymnasium for community use, with both sections tied together by an architecturally pleasing facade of mounted columns that enclosed an aesthetic courtyard.

Central Elementary School was one of several important PWA projects in Union City. The Public Works Administration also constructed the Obion County Courthouse (NR 3/30/95), a new city high school, and a public health building. Central School and the courthouse were the only fully realized and accomplished examples of PWA Modern architecture among the Obion County projects. Nashville architectural firms designed both buildings. The new Central Elementary School also represented a major contribution by the federal Public Works Administration to the civic life of Union City. Its modernist blending of Art Deco and Classicism was at odds with the usually more conservative public and commercial architecture of the town.

United States Department of the Interior
National Park Service

National Register of Historic Places Continuation Sheet

Section number 8 Page 9

Central Elementary School
Obion County, TN

Elite homes and churches built in Union City during the twentieth century generally followed the domineering white columns of the Classical Revival style. This disjunction represented by the new PWA school, compared to this more conservative urban environment, reflected the reform impulse of the New Deal and how federal reformers hoped to lead southern communities like Union City into the modern age.

The opening of Central Elementary was preceded by an open house of interested citizens wanting to inspect this model of modern architecture. The Union City newspaper ran this as an advertisement of the open house on September 4th, 1936:

In order that patrons and the public may know just how modern and convenient the building is, and what an improvement it is over the old building teachers of Central School and the Parent Teachers Association will hold open house at the building Friday evening, September 11, and the public will be invited to inspect the plant. (Union City *Daily Messenger*)

Some of the modern design reform essentials of the PWA represented in Central Elementary included being a fireproof building, contained convenient circulation flow, ample light and air, structural insulating and soundproofing. It also introduced sanitary floors, attractive furniture, drinking fountains, an auditorium, and the most up-to-date plumbing techniques.

The PWA Modern style of Central Elementary School is similar to Eakin School, an elementary school located in the Hillsboro-West End Historic District (NR 12/23/93) in Nashville. The architectural firm of Tisdale and Pinson, in business in Nashville from circa 1930-1938, built both. Eli Melvin Tisdale was born July 4, 1893, in Union City where he lived until graduating from high school. He practiced with numerous other architects and, later practiced alone. Both schools contain many of the architectural elements associated with the PWA Modern style. The steel framing with concrete and brick walls are common to the PWA style and are present in Central Elementary School. The building displays the vertical emphasis with fluted columns, which is common to the style. Art Deco elements, like the Palladian windows and the "X" pattern of the outside lights, are also representative of PWA Modern architecture.

The school's interior maintains many elements of its PWA design. The fluted columns and flooring of the auditorium's stage still exist, as well as the original glazed tile below windows and around the drinking fountains and the ceramic tile walls and floors in the boys and girls restrooms. The floor plan remains the same. And the staircases remain intact. All of these elements combine to create a real sense of extant history, tradition, and historic design associated with the PWA and the New Deal in Obion County. The new wings, which were added in a sensitive manner over twenty years ago, did not eliminate the historic features of the

United States Department of the Interior
National Park Service

National Register of Historic Places Continuation Sheet

Section number 8 Page 10

Central Elementary School
Obion County, TN

building; nor did they overwhelm the original power of the entrance of the building with its Tuscan columns. The wings have allowed this historic school to stay in use and to continue as an important contributor to the architectural legacy of Union City through its PWA Modern style. The legacy of New Deal design still permeates the exterior and interior appearance of Central Elementary School.

United States Department of the Interior
National Park Service

National Register of Historic Places Continuation Sheet

Section number 9 Page 11

Central Elementary School
Obion County, TN

9. BIBLIOGRAPHICAL REFERENCES

Craig, Lois. *The Federal Presence: Architecture, Politics, and Symbols in United States Government Building*. Massachusetts & London: MIT Press, 1978.

Forester, R.C. & Bill Threlkeld. *Roads Less Traveled: Self-Guided Tours to Historic Sites & Scenic Areas in Obion County*. Union City, TN: Lanzer Printing, 1996.

Marshall, E.A., ed. *History of Obion County*. Union City, TN: The Daily Messenger, 1941.

Tennessee State Planning Commission. *Programming Public Works*. Nashville: Tennessee State Planning Commission, 1940.

Threlkeld, Bill & Charlene. *A Time Returned A Pictorial History of Obion County, Tennessee*. Virginia: The Donning Company, 1994.

West, Carroll Van. *Tennessee Historical Landscapes: A Bicentennial Guide*. Knoxville: University of Tennessee Press, 1995.

United States Department of the Interior
National Park Service

National Register of Historic Places Continuation Sheet

Section number 10 Page 12

Central Elementary School
Obion County, TN

10. GEOGRAPHICAL DATA

Verbal Boundary Description

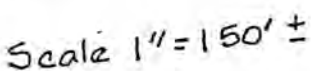
The nominated property includes all property in listed tax map 48-L, parcel 6, bounded by College and Palmer Streets, as documented in the enclosed Obion County Tax Map.

Boundary Justification

The nominated parcel includes the historical and present day property of Central Elementary School.

National Register of Historic Places Continuation Sheet

Central Elementary School
Obion County, TN



United States Department of the Interior
National Park Service

National Register of Historic Places Continuation Sheet

Section number photos Page 14

Central Elementary School
Obion County, TN

PHOTOGRAPHS

Central Elementary School
512 East College Street
Union City, Obion County, TN

Photos by: Carroll Van West
MTSU Center for Historic Preservation
Date: September 1996
Negatives: Tennessee Historical Commission
Nashville, TN

South facade, facing north
1 of 18

Detail, courtyard entrance, south facade, facing north
2 of 18

Detail, front entrance, south facade, facing north
3 of 18

Exterior urn, south facade, facing north
4 of 18

Courtyard, south facade, facing north
5 of 18

Courtyard, southeast elevation, facing northwest
6 of 18

Northeast elevation, facing southwest
7 of 18

Northwest elevation, facing southeast
8 of 18

Corridor, first floor, facing north
9 of 18

United States Department of the Interior
National Park Service

National Register of Historic Places Continuation Sheet

Section number photos Page 15

Central Elementary School
Obion County, TN

Corridor, first floor, facing north
10 of 18

Corridor, first floor classrooms, facing east
11 of 18

Corridor, first floor classrooms, facing south
12 of 18

Stairwell to second floor, facing northwest
13 of 18

Classroom, first floor, facing northeast
14 of 18

Classroom, first floor, metal lockers, facing north
15 of 18

Classroom, first floor, metal lockers, facing north
16 of 18

Auditorium, stage, facing north
17 of 18

Auditorium, Palladian windows, facing northwest
18 of 18

United States Department of the Interior
National Park Service

National Register of Historic Places Continuation Sheet

Section number photos Page 16

Central Elementary School
Obion County, TN

Additional Photographs

Photo by: Glenn Gallien
Date: October 2000
Neg: Northwest Tennessee Development District
Martin, Tennessee

East wing, south facade, facing northeast
1 of 18

Original building and east wing, south facade, facing north.
2 of 18

Original building and west wing, south facade, facing north
3 of 18

Original building, south facade, facing north
4 of 18

East wing connection to original building, facing north
5 of 18

Windows of first floor original building, east interior-facing elevation, facing northwest
6 of 18

Windows of east wing, west interior-facing elevation, facing east
7 of 18

East wing, north elevation, facing southwest
8 of 18

North elevation of original building with gymnasium and east wing attached, facing south
9 of 18

East wing rear, west interior-facing elevation, facing southeast
10 of 18

Storage addition next to gymnasium, north interior-facing elevation, facing south
11 of 18

United States Department of the Interior
National Park Service

National Register of Historic Places Continuation Sheet

Section number photos Page 17

Central Elementary School
Obion County, TN

Storage addition up-close, facing south
12 of 18

West wing, west elevation, facing southeast
13 of 18

West wing, south façade, facing northeast
14 of 18

Original building and west wing, south façade, facing north
15 of 18

Original kitchen with storage addition beyond windows, facing north
16 of 18

Gymnasium and east wing, interior-facing elevations, facing north
17 of 18

Storage addition next to gymnasium, facing north
18 of 18

UNITED STATES DEPARTMENT OF THE INTERIOR
NATIONAL PARK SERVICE

NATIONAL REGISTER OF HISTORIC PLACES
EVALUATION/RETURN SHEET

REQUESTED ACTION: NOMINATION

PROPERTY Central Elementary School
NAME:

MULTIPLE Union City, Tennessee MPS
NAME:

STATE & COUNTY: TENNESSEE, Obion

DATE RECEIVED: 1/18/01 DATE OF PENDING LIST: 1/31/01
DATE OF 16TH DAY: 2/16/01 DATE OF 45TH DAY: 3/05/01
DATE OF WEEKLY LIST:

REFERENCE NUMBER: 01000141

REASONS FOR REVIEW:

APPEAL: N DATA PROBLEM: N LANDSCAPE: N LESS THAN 50 YEARS: N
OTHER: N PDIL: N PERIOD: N PROGRAM UNAPPROVED: N
REQUEST: N SAMPLE: N SLR DRAFT: N NATIONAL: N

COMMENT WAIVER: N

☒ ACCEPT ☐ RETURN ☐ REJECT 2/16/01 DATE

ABSTRACT/SUMMARY COMMENTS:

Entered 2/16/01
National Register

RECOM./CRITERIA _____

REVIEWER _____ DISCIPLINE _____

TELEPHONE _____ DATE _____

DOCUMENTATION see attached comments Y/N see attached SLR Y/N































WELCOME TO P.E.

A BODY GOOD







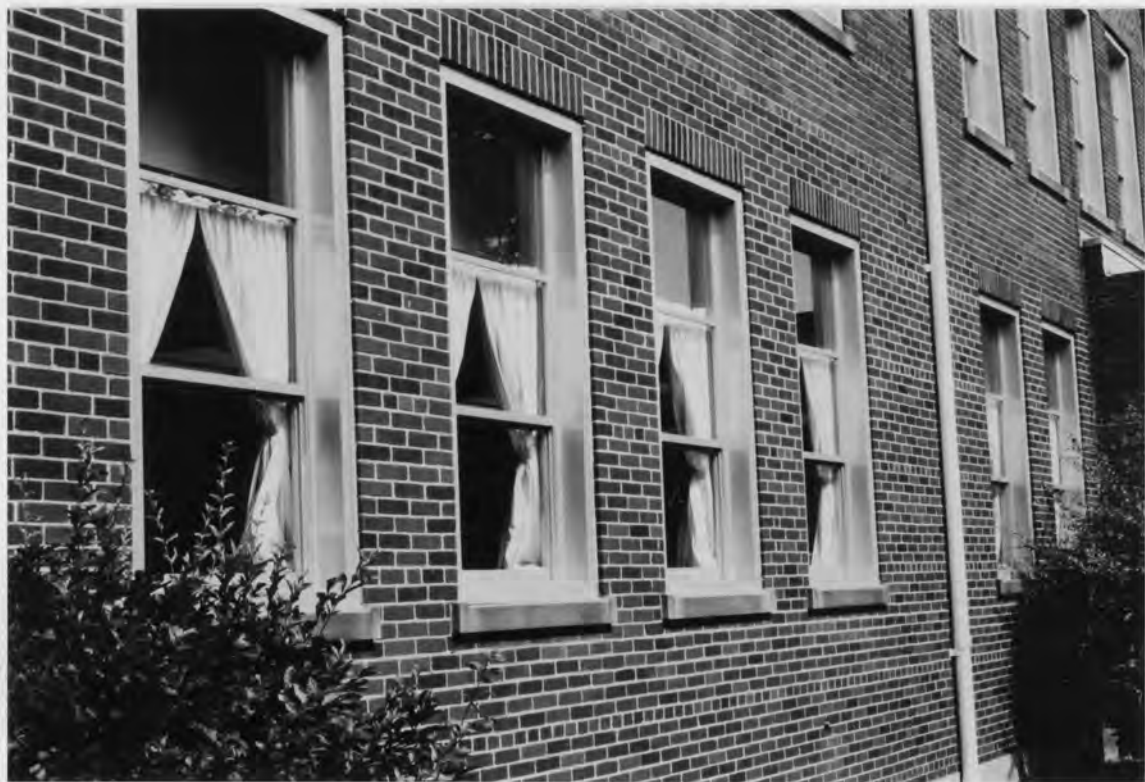


























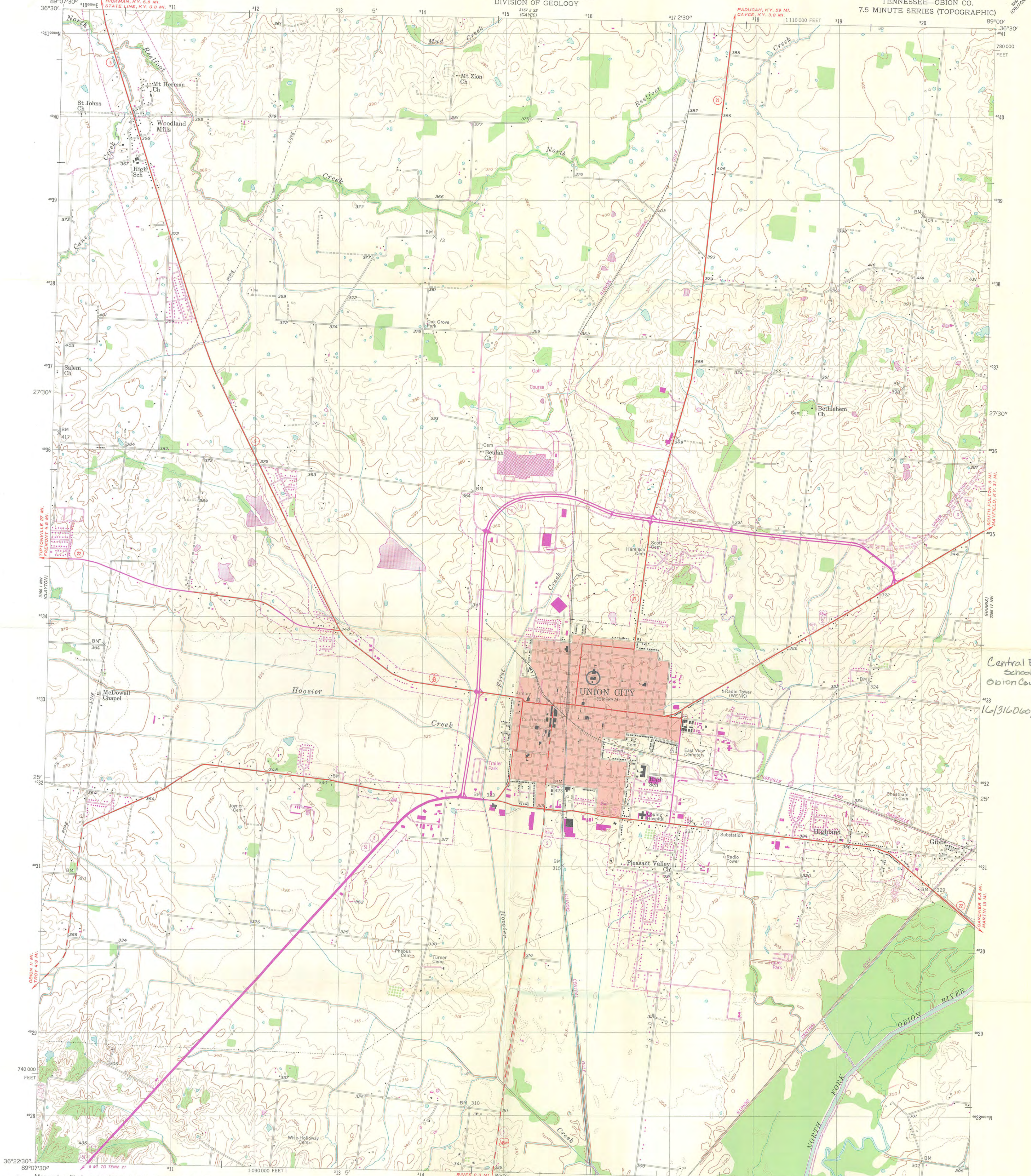






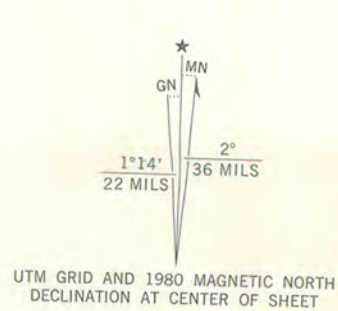




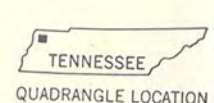


Central Elementary
School
Obion County
16/316Dw/4033250

Mapped, edited, and published by the Geological Survey
Control by USGS, NOS/NOAA, and Tennessee Geodetic Survey
Culture and drainage compiled by photogrammetric methods from
aerial photographs taken 1949. Topography by planetable surveys 1954
Polyconic projection. 10,000-foot grid based on Tennessee
coordinate system. 1000-meter Universal Transverse Mercator
grid, zone 16. 1927 North American Datum
To place on the predicted North American Datum 1983
move the projection lines 5 meters south and 6 meters
east as shown by dashed corner ticks
Red tint indicates areas in which only landmark buildings are shown
Revisions shown in purple compiled in cooperation with State of
Tennessee agencies from aerial photographs taken 1975 and other
source data. This information not field checked. Map edited 1980



CONTOUR INTERVAL 10 FEET
DASHED LINES REPRESENT HALF-INTERVAL CONTOURS
NATIONAL GEODETIC VERTICAL DATUM OF 1929



ROAD CLASSIFICATION
Heavy-duty ——— Light-duty ———
Medium-duty ——— Unimproved dirt ———
U. S. Route ——— State Route ———

UNION CITY, TENN
N 3622.5 — W 8900.7.5

1954
PHOTOREVISED 1980
DMA 3156 I NE—SERIES 7841



TENNESSEE HISTORICAL COMMISSION
DEPARTMENT OF ENVIRONMENT AND CONSERVATION
2941 LEBANON ROAD
NASHVILLE, TN 37243-0442
(615) 532-1550

January 4, 2001

Carol Shull
Keeper of the National Register
National Park Service
National Register Branch
1849 C Street NW
Room NC 400
Washington, DC 20240

Dear Ms. Shull:

Enclosed please find the documentation to nominate the *Central Elementary School* to the National Register of Historic Places. This is a re-submission of a returned nomination. I believe that the revised nomination answers all questions.

If you have any questions about this or if more information is needed, please contact Claudette Stager at 615/532-1558.

Sincerely,

Herbert L. Harper
Deputy State Historic Preservation Officer

HLH/cs

Enclosure



TENNESSEE HISTORICAL COMMISSION
2941 LEBANON ROAD
NASHVILLE, TENNESSEE 37243-0442
OFFICE: (615) 532-1550

RECEIVED 2280

OCT -9 2015

Nat. Register of Historic Places
National Park Service

September 29, 2015

J. Paul Loether
Deputy Keeper and Chief
National Register and National Historic Landmarks Programs
National Register of Historic Places
1201 Eye Street NW
8th floor
Washington, DC 20005

Dear Mr. Loether:

Enclosed please find the documentation to remove the Central Elementary School from the National Register of Historic Places. The building was demolished on June 14, 2014.

If you have any questions or if more information is needed, contact Peggy Nickell at 615/770-1087 or Peggy.Nickell@tn.gov.

Sincerely,

A handwritten signature in blue ink, which appears to read "Claudette Stager".

Claudette Stager
Deputy State Historic Preservation Officer

Cs:pn

Enclosure