

United States Department of the Interior  
National Park Service

National Register of Historic Places  
Registration Form

308  
JAN 26 1990

This form is for use in nominating or requesting determinations of eligibility for individual properties or districts. See instructions in *Guidelines for Completing National Register Forms* (National Register Bulletin 16). Complete each item by marking "x" in the appropriate box or by entering the requested information. If an item does not apply to the property being documented, enter "N/A" for "not applicable." For functions, styles, materials, and areas of significance, enter only the categories and subcategories listed in the instructions. For additional space use continuation sheets (Form 10-900a). Type all entries.

1. Name of Property

historic name Lawrenceburg No. 1 Hydroelectric Station  
other names/site number Shoal Creek No. 1

2. Location

street & number Glen Spring Road & Horseshoe Bend of Shoal Creek N/A not for publication  
city, town Lawrenceburg  vicinity  
state Tennessee code TN county Lawrence code 099 zip code 38464

3. Classification

Ownership of Property	Category of Property	Number of Resources within Property	
<input type="checkbox"/> private	<input type="checkbox"/> building(s)	Contributing	Noncontributing
<input checked="" type="checkbox"/> public-local	<input type="checkbox"/> district	_____	_____ buildings
<input type="checkbox"/> public-State	<input type="checkbox"/> site	_____	_____ sites
<input type="checkbox"/> public-Federal	<input checked="" type="checkbox"/> structure	<u>1</u>	_____ structures
	<input type="checkbox"/> object	_____	_____ objects
		<u>1</u>	<u>0</u> Total

Name of related multiple property listing: Pre-TVA Hydroelectric Development in Tennessee, 1901-1933 Number of contributing resources previously listed in the National Register 0

4. State/Federal Agency Certification

As the designated authority under the National Historic Preservation Act of 1966, as amended, I hereby certify that this  nomination  request for determination of eligibility meets the documentation standards for registering properties in the National Register of Historic Places and meets the procedural and professional requirements set forth in 36 CFR Part 60. In my opinion, the property  meets  does not meet the National Register criteria.  See continuation sheet.  
Herbert C. Hays Deputy State Historic Preservation Officer Date 1/25/90  
Tennessee Historical Commission  
State or Federal agency and bureau

In my opinion, the property  meets  does not meet the National Register criteria.  See continuation sheet.  
Signature of commenting or other official \_\_\_\_\_ Date \_\_\_\_\_  
State or Federal agency and bureau \_\_\_\_\_

5. National Park Service Certification

I, hereby, certify that this property is:  
 entered in the National Register. Amy Federman 4/28/90  
 See continuation sheet.  
 determined eligible for the National Register.  See continuation sheet.  
 determined not eligible for the National Register.  
 removed from the National Register.  
 other, (explain:) \_\_\_\_\_  
Signature of the Keeper Date of Action



JAN 26 1997

United States Department of the Interior  
National Park Service

## National Register of Historic Places Continuation Sheet

Section number 7 Page 2 Lawrenceburg No. 1 Hydroelectric Station

---

Originally, there were two horizontal Francis-type turbines, developing 600 horsepower under a thirty-seven-foot gross head at the Lawrenceburg No. 1 site. These turbines received water from the penstocks and discharged water through the draft tubes directly underneath the powerhouse. All machinery was removed when the plant was retired in 1939.<sup>1</sup>

---

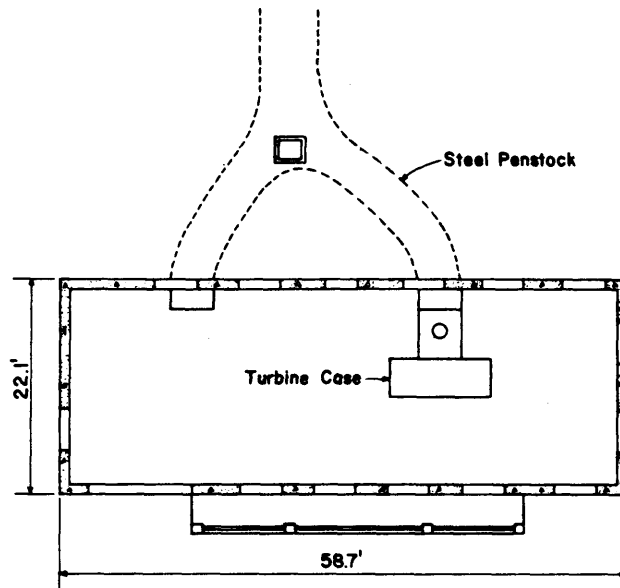
<sup>1</sup>Small Hydro Feasibility Report for Shoal Creek No. 1 Dam, pp. 1-7.

United States Department of the Interior  
National Park Service

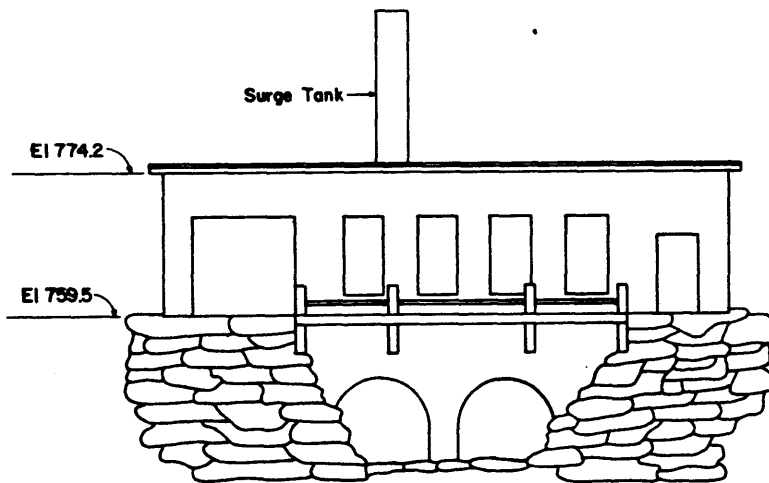
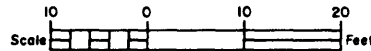
JAN 26 1999

# National Register of Historic Places Continuation Sheet

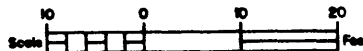
Section number 7 Page 3 Lawrenceburg No. 1 Hydroelectric Station



PLAN-POWERHOUSE FLOOR



DOWNSTREAM ELEVATION-POWERHOUSE

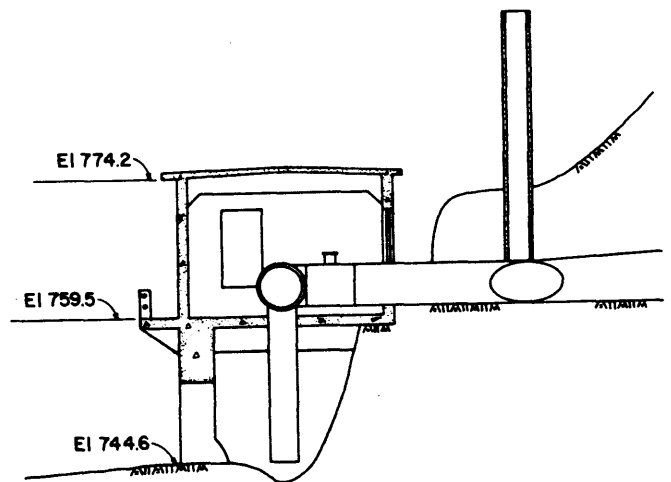
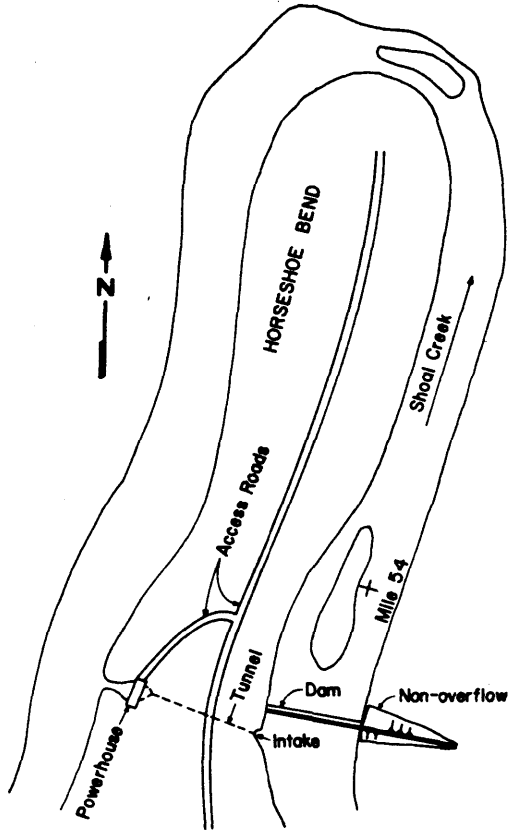


JAN 26 1990

United States Department of the Interior  
National Park Service

National Register of Historic Places  
Continuation Sheet

Section number 7 Page 4 Lawrenceburg No. 1 Hydroelectric Station



**SECTION THRU POWERHOUSE**

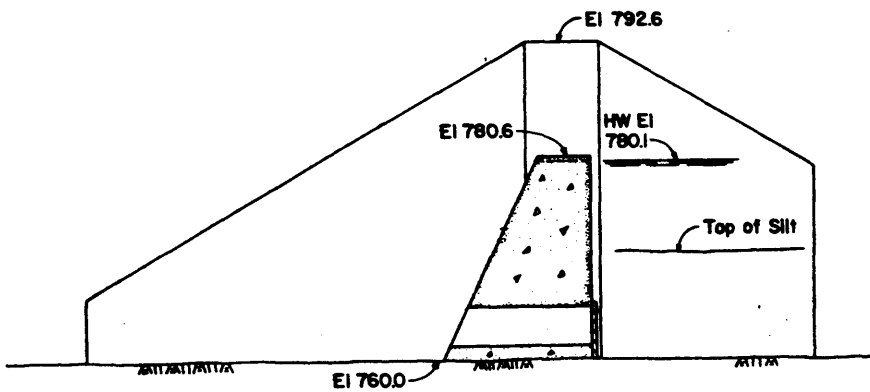
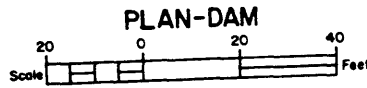
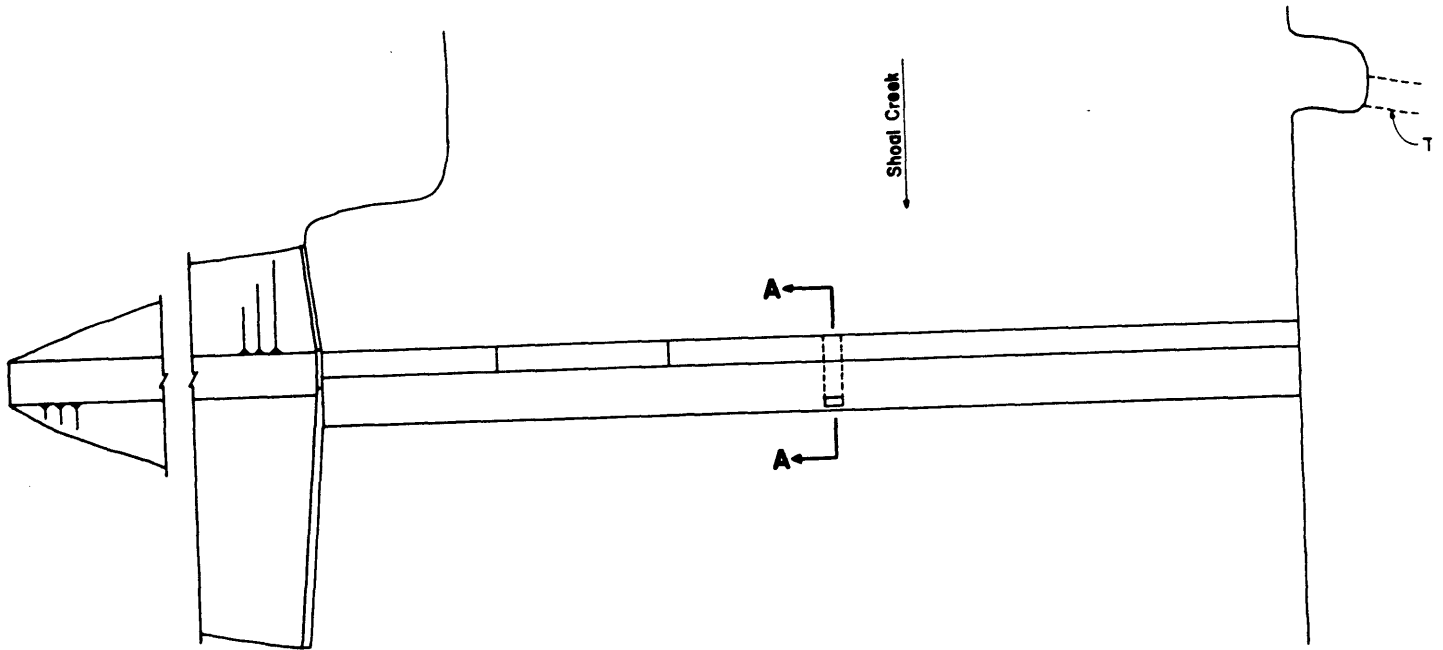


United States Department of the Interior  
National Park Service

JAN 26 1990

# National Register of Historic Places Continuation Sheet

Section number 7 Page 5 Lawrenceburg No. 1 Hydroelectric Station



SECTION A-A

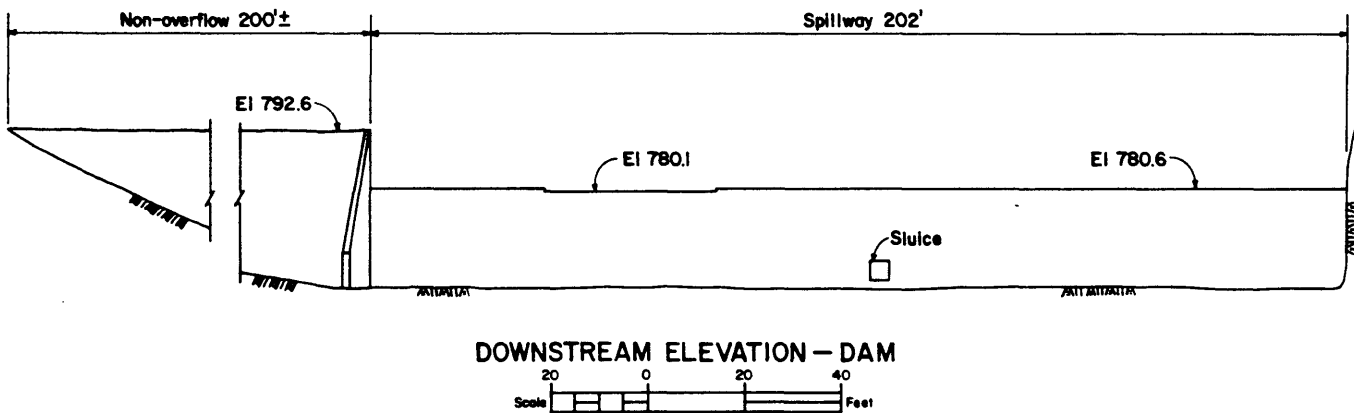


JAN 26 1990

United States Department of the Interior  
National Park Service

National Register of Historic Places  
Continuation Sheet

Section number 7 Page 6 Lawrenceburg No. 1 Hydroelectric Station



**8. Statement of Significance**

Certifying official has considered the significance of this property in relation to other properties:

nationally     statewide     locally

Applicable National Register Criteria     A     B     C     D

Criteria Considerations (Exceptions)     A     B     C     D     E     F     G

Areas of Significance (enter categories from instructions)

ENGINEERING  
COMMERCE  
COMMUNITY PLANNING &  
DEVELOPMENT

Period of Significance

1905-1933

Significant Dates

1905-06

Cultural Affiliation

N/A

Significant Person

N/A

Architect/Builder

Unknown

State significance of property, and justify criteria, criteria considerations, and areas and periods of significance noted above.

The Lawrenceburg No. 1 site is significant under criterion C for engineering because it represents the kind of local hydroelectric engineering projects typical of the kind being constructed on Tennessee's smaller rivers in the early twentieth century. It was, in fact, the second such facility built in the state. Moreover, its engineering is remarkable in that it is conceptually similar in design to the first hydroelectric station in Tennessee, the now inundated Loop Plant near Winchester (1901), the massive Rock Island site (1917) in White County, and at the colossal Calderwood site (1930) in Blount County, all of which utilize a tunnel arrangement to direct water through a river bend to a powerhouse.

The site is also significant under criterion A for Commerce and Government because it was a municipally-built, owned, and operated facility. That is, it is closely associated with the so-called "Progressive Era" in Tennessee's and America's early twentieth century history, a time when municipalities, reacting to a widely held distrust by the voting public concerning the destructive power of the monopoly of private enterprise, frequently opted for the alternative of public, rather than private, ownership of public utilities. Concern for efficient government took into account the usefulness of a plethora of professional private management methods and means, including such public utilities as urban transportation, sewage, and hydroelectric generation. In this way, local governments became responsible for providing electrical power to citizens as a part of a national reform movement. Lawrenceburg's hydroelectric site demonstrates one Tennessee city's participation in this progressive national trend.

The City of Lawrenceburg built two Pre-TVA hydroelectric plants on Shoal Creek. Lawrenceburg No. 1 was built in 1907 after a municipal election in 1905 approved the sale of municipal bonds to finance the project. Walter G. Kirkpatrick was the project engineer. Construction of the site began in 1905-06, at Horseshoe Bend on Shoal Creek. A dam was built and water was impounded and diverted across the Horseshoe Bend through a tunnel to the



**9. Major Bibliographical References**

Previous documentation on file (NPS): N/A  
 preliminary determination of individual listing (36 CFR 67) has been requested  
 previously listed in the National Register  
 previously determined eligible by the National Register  
 designated a National Historic Landmark  
 recorded by Historic American Buildings Survey # \_\_\_\_\_  
 recorded by Historic American Engineering Record # \_\_\_\_\_

See continuation sheet

Primary location of additional data:  
 State historic preservation office  
 Other State agency  
 Federal agency  
 Local government  
 University  
 Other  
Specify repository: \_\_\_\_\_

**10. Geographical Data**

Acreeage of property Approximately 2 acres

UTM References

A 

1	6	4	6	7	4	2	0
Zone				Easting			

3	18	9	18	2	16	10
Northing						

B 

Zone			Easting		Northing	

  
D 

Zone			Easting		Northing	

Lawrenceburg, TN 52NE  
Verbal Boundary Description

See continuation sheet

See pages: Section 7 page 4, Section 10 page 2, Section 10 page 3.

See continuation sheet

Boundary Justification

See continuation sheet

**11. Form Prepared By**

name/title James B. Jones, Jr., Historic Preservation Specialist  
organization Tennessee Historical Commission date January 1990  
street & number 701 Broadway telephone (615) 742-6718  
city or town Nashville state TN zip code 37243-0442

United States Department of the Interior  
National Park Service

**National Register of Historic Places  
Continuation Sheet**

Section number 8 Page 2 Lawrenceburg No. 1 Hydroelectric Station

---

powerhouse on the other side and then returned to Shoal Creek. The major features of this site are a dam, power tunnel, penstocks, and powerhouse. The site is reached via secondary roads from Lawrenceburg and an unpaved farm road. The City of Lawrenceburg still owns the site which formerly supplied power to the town. No. 1 met the municipality's power needs until 1915 when Shoal Creek No. 2 site was built 1.8 miles further downstream. Both plants operated until the late thirties and early forties.<sup>2</sup>

The Lawrenceburg No. 1 Hydroelectric Station meets the registration requirements for Pre-TVA Hydroelectric Power Generating Facilities, as set forth in the Multiple Property Documentation Form for Pre-TVA Hydroelectric Development in Tennessee, 1901-1933. Although abandoned, the site retains sufficient design and construction integrity with its dam, tunnel, and powerhouse to warrant the protection afforded by the National Register of Historic Places under criteria C and A.

---

<sup>2</sup>Ibid., p. 1, and; correspondence with Marymaud Killen-Carter, Lawrence County Historian, March 3, 1987, and; Viola H. Carpenter and Marymaud Killen-Carter, Our Hometown, Lawrenceburg: Crossroads of Dixie, (Lawrenceburg, Tenn.: Lino-Litho Printers, 1986), pp. 92-94, 180, 182, 183.

JAN 26 1990

United States Department of the Interior  
National Park Service

## National Register of Historic Places Continuation Sheet

Section number   9   Page   2   Lawrenceburg No. 1 Hydroelectric Station

---

### MAJOR BIBLIOGRAPHICAL REFERENCES

Carpenter, Viola H., and Killen-Carter, Marymaud. Our Hometown, Lawrenceburg: Crossroads of Dixie. Lawrenceburg, Tenn.: Lino-Litho Printers, 1986.

Correspondence with Marymaud Killen-Carter, Lawrence County Historian, March 3, 1987, on file at the Tennessee State Historical Commission/State Historic Preservation Office.

Tennessee Valley Authority, Small Hydro Feasibility Report for the Shoal Creek No. 1 Dam, Technical Report Series, Small Hydro Program Feasibility Reports, Division Water Resources, Office of Natural Resources, Norris, Tennessee, 1982: Report No. WR28-1-510-133.

United States Department of the Interior  
National Park Service

JAN 26 1997

## National Register of Historic Places Continuation Sheet

Section number 10 Page 2 Lawrenceburg No. 1 Hydroelectric Station

---

### BOUNDARY DESCRIPTION

The boundaries of the Lawrenceburg (No. 1) Hydroelectric Station begin with the dam abutment on east side of Shoal Creek at the Horseshoe bend, and extend to the west bank of Shoal Creek. Some fifty to seventy five feet upstream from the dam and on the western side of Shoal Creek is the entrance to the power tunnel, which extends through the Horseshoe bend to the power house on the other side of the bend (also on the eastern bank of Shoal Creek). The entire power house and tail race are included in the boundary. Map 89, Parcel 9. See accompanying map.

### BOUNDARY JUSTIFICATION

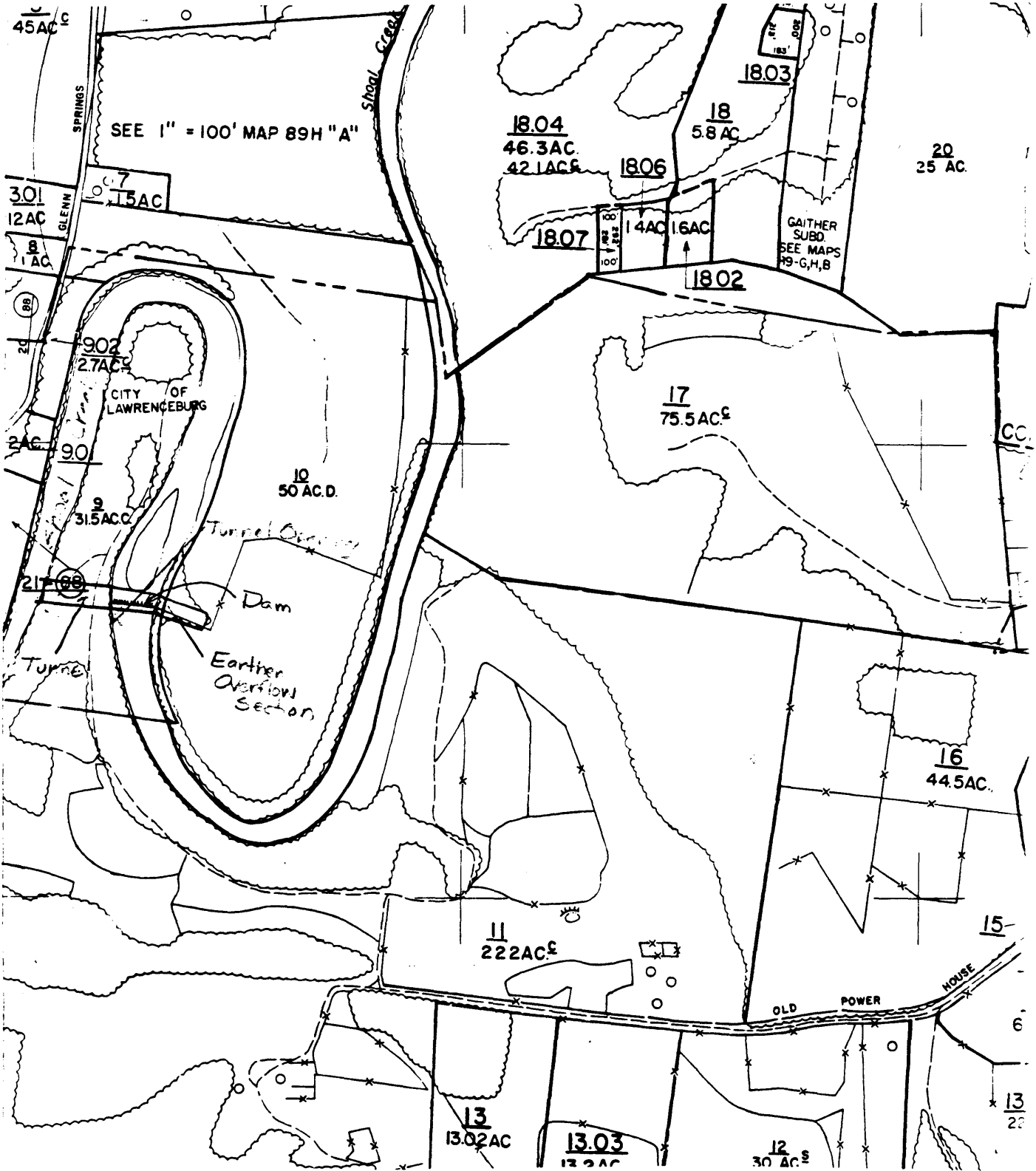
The boundaries for the Lawrenceburg No. 1 Hydroelectric Station are sufficient to protect the historic integrity of the site.

United States Department of the Interior  
National Park Service

National Register of Historic Places  
Continuation Sheet

Section number 10 Page 3 Lawrenceburg No. 1 Hydroelectric Station

Scale 1" = 400'



United States Department of the Interior  
National Park Service

JAN 26 1990

## National Register of Historic Places Continuation Sheet

Section number Photos Page 1 Lawrenceburg No. 1 Hydroelectric Station

---

Lawrenceburg No. 1 Hydroelectric Station  
Near Glen Spring Road, 1.2 miles SW of Lawrenceburg on the Horseshoe Bend  
of Shoal Creek

Lawrenceburg, Lawrenceburg County, Tennessee

Photo By: James B. Jones, Jr.

Date: April 1989

Neg: Tennessee Historical Commission  
701 Broadway  
Nashville, Tennessee 372343-0442

Dam, looking southeast  
#1 of 4

Dam Abutment, looking southwest  
#2 of 4

Powerhouse, looking east  
#3 of 4

Powerhouse, looking east  
#4 of 4