



1. Bunk House and Mess Hall, NPS
Bldg #16. Looking northwest from
parking terraces. (Significant)

The Caverns Historic District
Carlsbad vicinity, New Mexico

Betsy Swanson
825 Calle Mejia #1223
Santa Fe, N.M. 87501

December 1985



1. Bunk House and Mess Hall, NPS
Bldg #16. West side, rough-cut
limestone walls, steel casement
windows, halved log lintels. (Sig.)

The Caverns Historic District
Carlsbad vicinity, New Mexico

Betsy Swanson

825 Calle Mejia #1223

Santa Fe, New Mexico 87501

December 1985



1. Bunk House and Mess Hall, NPS
Bldg #16. Interior of Unit Mana-
ger's Office with New Mexican
Colonial Style furnishings made for
building. (Significant)

The Caverns Historic District
Carlsbad vicinity, New Mexico

Betsy Swanson
825 Calle Mejia #1223
Santa Fe, N.M. 87501

December 1985



1. Bunk House and Mess Hall, NPS Bldg #16. Interior of lobby showing limestone fireplace, beamed, herring bone pattern ceiling. (Significant)

The Caverns Historic District
Carlsbad vicinity, New Mexico

Betsy Swanson
825 Calle Mejia #1223
Santa Fe, N.M. 87501

December 1985



2. Employee Residence, NPS Bldg #6.
(Significant)

Looking N.

The Caverns Historic District
Carlsbad vicinity, New Mexico

Betsy Swanson
825 Calle Mejia #1223
Santa Fe, N.M. 87501

December 1985



2. Employee Residence, NPS Bldg #6.

West side showing random rubble limestone masonry, "broken" masonry at roofline, wooden window with halved log lintel. (Significant

The Caverns Historic District
Carlsbad vicinity, New Mexico

Betsy Swanson
825 Calle Mejia #1223
Santa Fe, N.M. 87501

December 1985



3. Employee Residence, NPS Bldg #7.
Front entrance, S facade. (Sig.)
The Caverns Historic District
Carlsbad vicinity, New Mexico

Betsy Swanson
825 Calle Mejia #1223
Santa Fe, N.M. 87501

December 1985



3. Employee Residence, NPS Bldg #7.
Looking NNW. (Significant)

The Caverns Historic District
Carlsbad vicinity, New Mexico

Betsy Swanson

825 Calle Mejia #1223

Santa Fe, N.M. 87501

December 1985



4. Employee Residence, NPS Bldg #8.
Looking N. (Significant)

The Caverns Historic District
Carlsbad vicinity, New Mexico

Betsy Swanson
825 Calle Mejia #1223
Santa Fe, N.M. 87501

December 1985



5. Employee Residence, NPS Bldg #9, foreground (Significant).
9. Multiple Dwelling Unit #1, NPS Bldg #25 A,B,C, center, left. (Significant).
10. Multiple Dwelling Unit #2, NPS Bldg #28 A,B,C, center, right. (Significant).

In immediate foreground is service road (Significant).

In background are newer dwelling units not part of district.

Looking NE with telephoto lens from observation deck of Visitor Center.

The Caverns Historic District
Carlsbad vicinity, New Mexico

Betsy Swanson
825 Calle Mejia #1223
Santa Fe, N.M. 87501

December 1985



5. Employee Residence, NPS Bldg #9.

Looking NW. (Significant)

The Caverns Historic District
Carlsbad vicinity, New Mexico

Betsy Swanson

825 Calle Mejia #1223

Santa Fe, N.M. 87501

December 1985



6. Employee Residence, NPS Bldg #13
A & B (at right). (Significant)
4. Employee Residence, NPS Bldg #8
(at left). (Significant)

Looking NW.

The Caverns Historic District
Carlsbad vicinity, New Mexico

Betsy Swanson
825 Calle Mejia #1223
Santa Fe, N.M. 87501

December 1985



6. Employee Residence, NPS Bldg #13
A & B. Looking NNW. (Significant)

The Caverns Historic District.
Carlsbad vicinity, New Mexico

Betsy Swanson

825 Calle Mejia #1223

Santa Fe, N.M. 87501

December 1985.



7. Employee Residence Duplex, NPS
Bldg #15. (at left) (Sig.)
2. Employee Residence, NPS Bldg #6.
(center foreground) (Significant)
6. Employee Residence, NPS Bldg #13
A & B. (center background) (Sig.)
4. Employee Residence, NPS Bldg #8.
(at right) (Significant)

Looking NE

The Caverns Historic District
Carlsbad vicinity, New Mexico

Betsy Swanson
825 Calle Mejia #1223
Santa Fe, N.M. 87501

December 1985



9. Multiple Dwelling Unit #1, NPS
Bldg #25 (foreground) (Significant)
10. Multiple Dwelling Unit #2, NPS
Bldg #28 (background) (Significant)

Looking NE along rock bordered path
in front of buildings, showing stone
wall terrace.

The Caverns Historic District
Carlsbad vicinity, New Mexico

Betsy Swanson
825 Calle Mejia #1223
Santa Fe, N.M. 87501

December 1985

Res. 25
looking ~~to~~ E along
front of 25 + 28



9. Multiple Dwelling Unit #1, NPS
Bldg #25, Unit A. Looking NE.
(Significant)

The Caverns Historic District
Carlsbad vicinity, New Mexico

Betsy Swanson
825 Calle Mejia #1223
Santa Fe, N.M. 87501
December 1985



9. Multiple Dwelling Unit #1, NPS
Bldg #25 A,B,C. (right) (Significant)
 10. Multiple Dwelling Unit #2, NPS
Bldg #28 A,B,C. (left) (Significant)
- Rear view from service road, looking SE.

The Caverns Historic District
Carlsbad vicinity, New Mexico

Betsy Swanson
825 Calle Mejia #1223
Santa Fe, N.M. 87501

December 1985



10. Multiple Dwelling Unit #2, NPS
Bldg #28, Unit C. Looking NW.
(Significant)

The Caverns Historic District
Carlsbad vicinity, New Mexico

Betsy Swanson

825 Calle Mejia #1223

Santa Fe, N.M. 87501

December 1985



10. Multiple Dwelling Unit #2, NPS
Bldg #28 A, B & C. Looking NE.
(Significant)

The Caverns Historic District
Carlsbad vicinity, New Mexico

Betsy Swanson
825 Calle Mejia #1223
Santa Fe, N.M. 87501

December 1985



10. Multiple Dwelling Unit #2, NPS
Bldg #28, Unit C. (Significant)

Interior wrought-iron light fixture.

The Caverns Historic District
Carlsbad vicinity, New Mexico

Betsy Swanson
825 Calle Mejia #1223
Santa Fe, N.M. 87501

December 1985



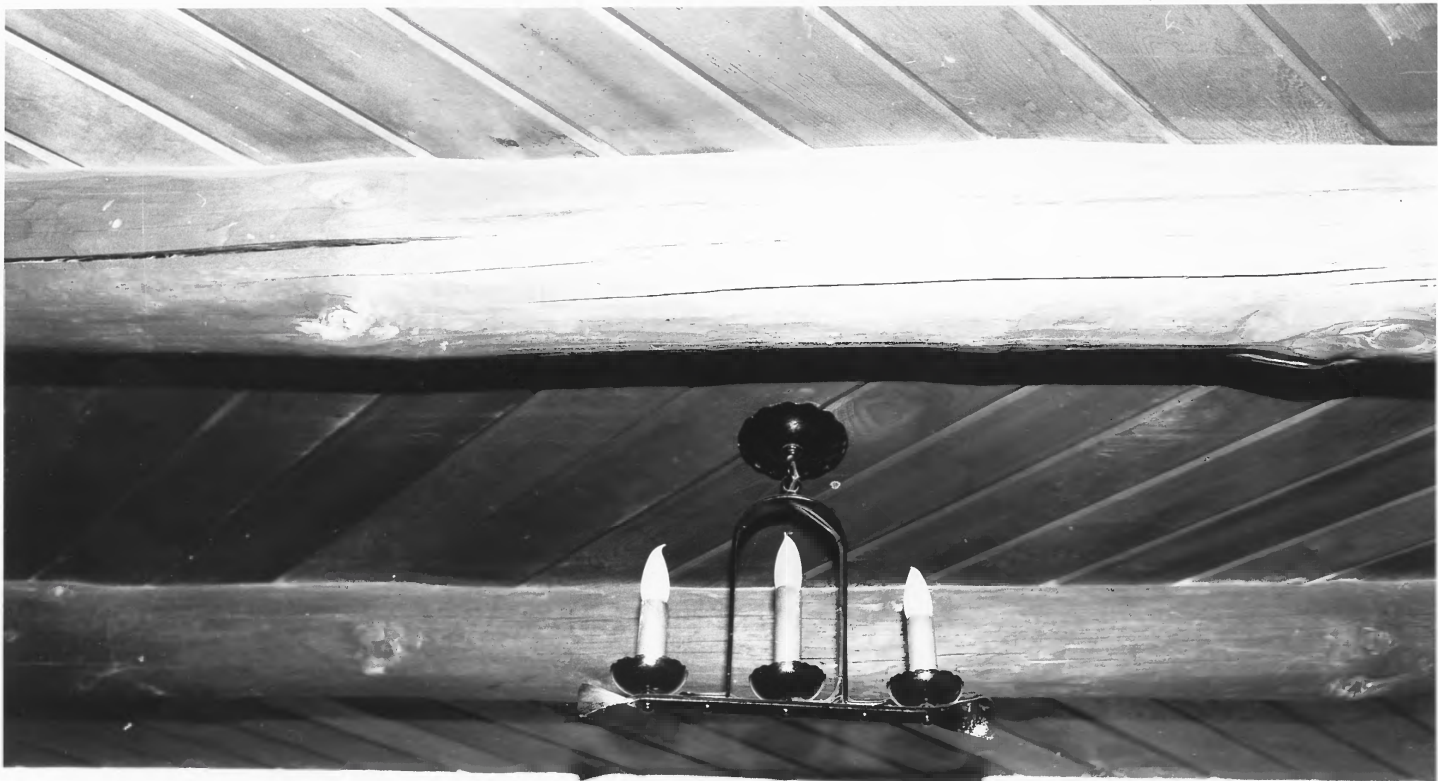
10. Multiple Dwelling Unit #2, NPS
Bldg #28, Unit B. (Significant)

Exterior wrought-iron light
fixture.

The Caverns Historic District
Carlsbad vicinity, New Mexico

Betsy Swanson
825 Calle Mejia #1223
Santa Fe, N.M. 87501

December 1985



10. Multiple Dwelling Unit #2, NPS
Bldg #28, Unit C. (Significant)

Interior wrought-iron light fixture, vigas and herringbone pattern boards of livingroom ceiling.

The Caverns Historic District
Carlsbad vicinity, New Mexico

Betsy Swanson
825 Calle Mejia #1223
Santa Fe, N.M. 87501

December 1985



10. Multiple Dwelling Unit #2, NPS
Bldg #28, Unit B. (Significant)

Door under portal, showing pedi-
mented lintel, vigas in ceiling,
wrought-iron light fixture.

The Caverns Historic District
Carlsbad vicinity, New Mexico

Betsy Swanson
825 Calle Mejia #1223
Santa Fe, N.M. 87501

December 1985



11. Power House, NPS Bldg #10.
Front, looking SW. (Significant)

The Caverns Historic District
Carlsbad vicinity, New Mexico

Betsy Swanson
825 Calle Mejia #1223
Santa Fe, N.M. 87501

June 1986



11. Powerhouse, NPS Bldg #10.
(Significant)

Top: front, looking SE.

Bottom: rear, looking NW.

Photos: 1953.

The Caverns Historic District
Carlsbad vicinity, New Mexico

Photo files, Carlsbad Caverns
National Park Headquarters,
Carlsbad, New Mexico



11. Power House, NPS Bldg #10.
Rear, looking NE. (Significant)
The Caverns Historic District
Carlsbad vicinity, New Mexico

Betsy Swanson
825 Calle Mejia #1223
Santa Fe, N.M. 87501

December 1986



12. Warehouse, NPS Bldg #26.

Looking NE. (Significant)

Caverns Historic District
Carlsbad vicinity, New Mexico

Betsy Swanson
825 Calle Mejia #1223
Santa Fe, N.M. 87501
December 1985



12. Warehouse, NPS Bldg #26 (Significant), showing shed (17) (Supporting) at rear. Looking SE.

Caverns Historic District
Carlsbad vicinity, New Mexico

Betsy Swanson
825 Calle Mejia #1223
Santa Fe, N.M. 87501

March, 1988



13. Garage, NPS Bldg #27.

Looking NE. (Significant)

The Caverns Historic District
Carlsbad vicinity, New Mexico

Betsy Swanson

825 Calle Mejia #1223

Santa Fe, N.M. 87501

December 1985



14. Utility Building, NPS Bldg #41.
(left) (Supporting)
11. Power House, NPS Bldg #10.
(right) (Significant)

Looking SW.

The Caverns Historic District
Carlsbad vicinity, New Mexico

Betsy Swanson
825 Calle Mejia #1223
Santa Fe, N.M. 87501

June 1986



15. Paint Shop and Flamables Storage Building, NPS Bldg #42. (Supporting) Looking NW.

The Caverns Historic District
Carlsbad vicinity, New Mexico

Betsy Swanson

825 Calle Mejia #1223

Santa Fe, N.M. 87501

December 1985



16. Bat Flight Amphitheater Comfort Station, NPS Bldg #62. (Supporting) Looking N. from parking terraces. On hillside directly above is (2) Employee Residence, NPS Bldg #6. (Significant)

The Caverns Historic District
Carlsbad vicinity, New Mexico

Betsy Swanson
825 Calle Mejia #1223
Santa Fe, N.M. 87501

June 1986



17. Shed. (Supporting) Looking W.
Behind shed is (12) Warehouse,
NPS Bldg #26, rear (Significant).

The Caverns Historic District
Carlsbad vicinity, New Mexico

Betsy Swanson
825 Calle Mejia #1223
Santa Fe, N.M. 87501

March, 1988



The Caverns Historic District
Carlsbad vicinity, New Mexico

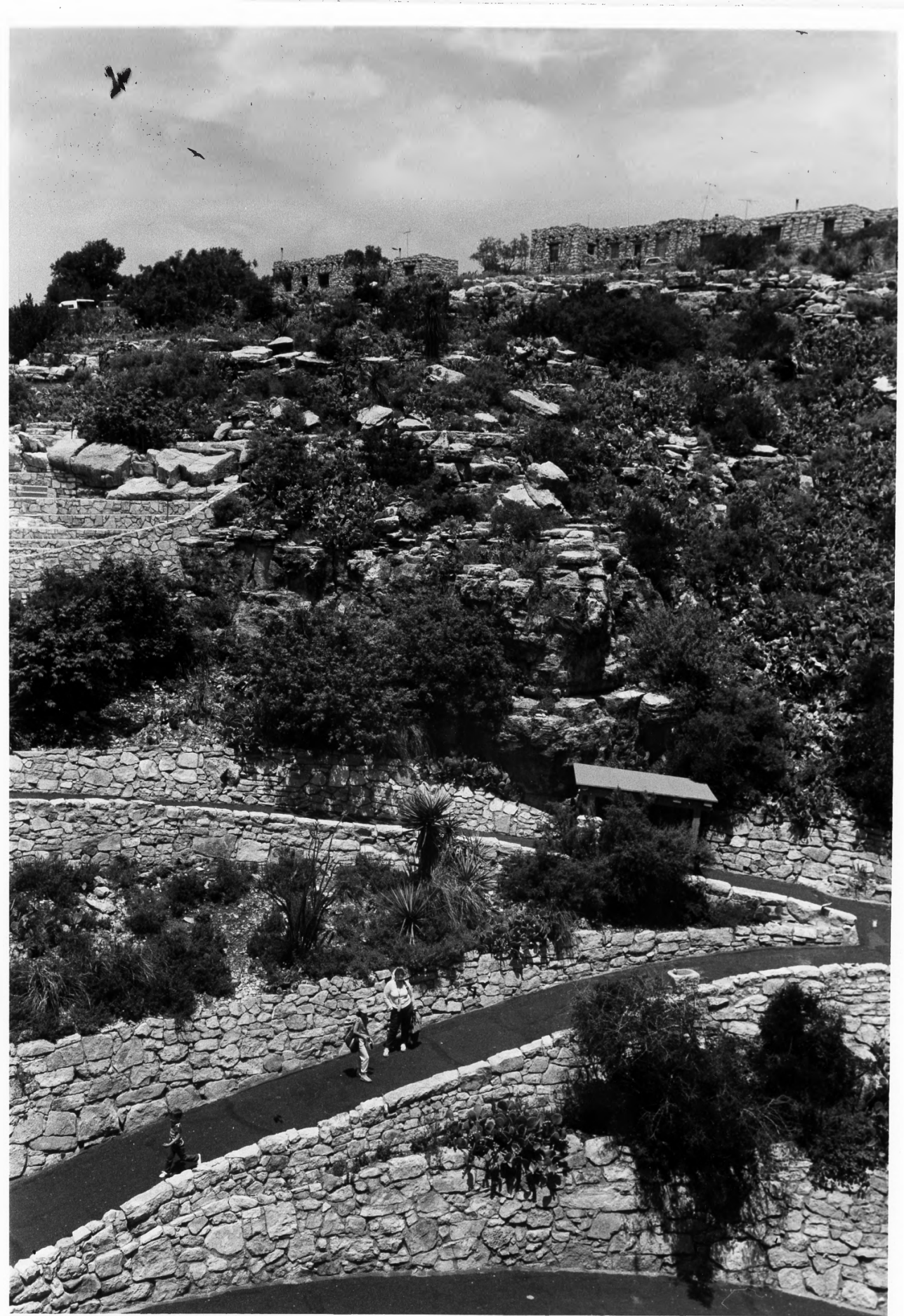
Looking E down Bat Cave Draw at
buildings on slope of draw and
parking terraces. (Significant)

Betsy Swanson

825 Calle Mejia #1223

Santa Fe, N.M. 87501

June 1986



Switchback trail (Significant),
amphitheater, left, (Supporting),
and limestone residences on hill
(Significant).

Looking NW.

The Caverns Historic District
Carlsbad vicinity, New Mexico

Betsy Swanson
825 Calle Mejia #1223
Santa Fe, N.M. 87501

June 1986

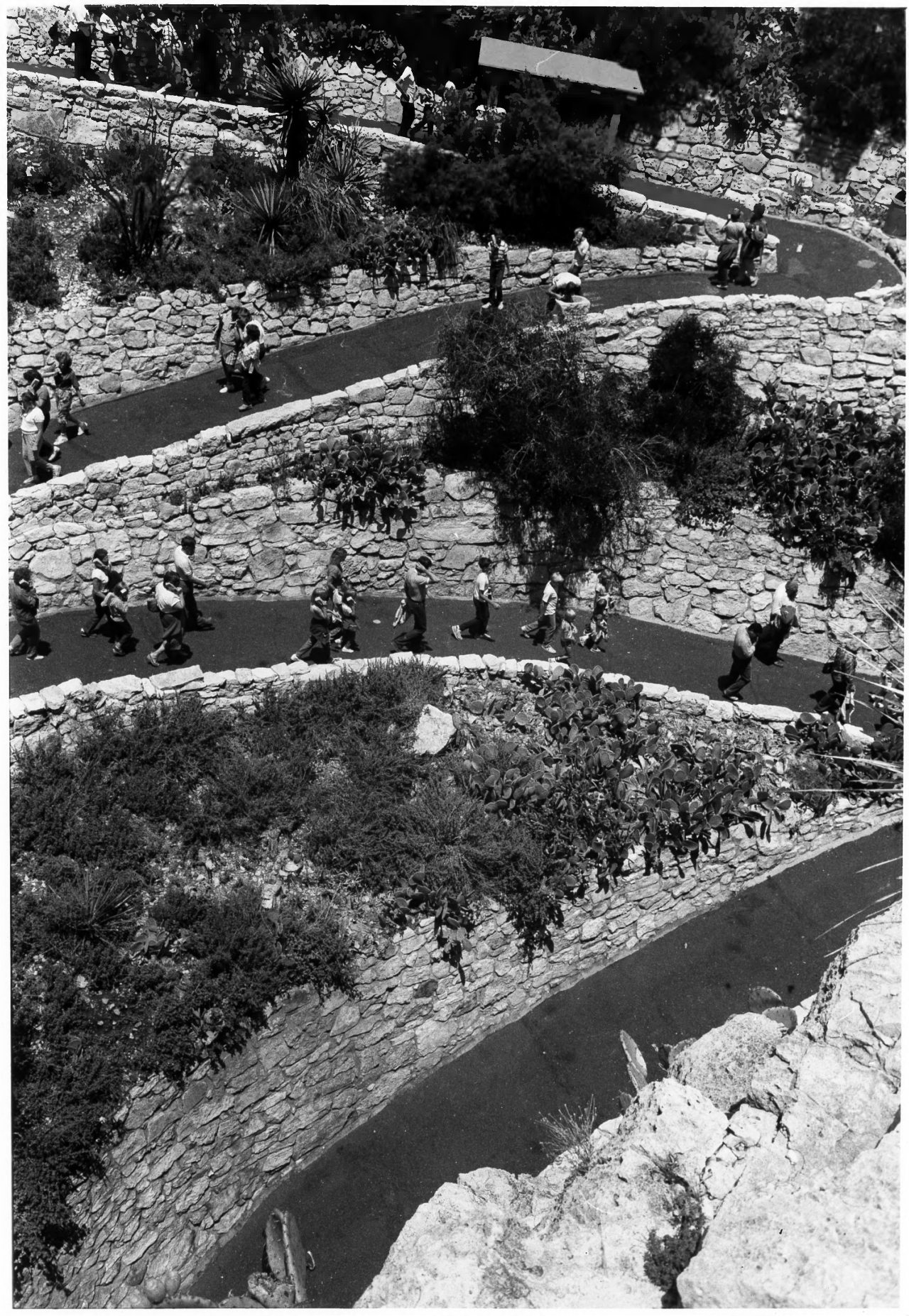


Switchback trail into the natural cave entrance, looking down from rim of roof of cave, showing limestone retaining walls (Significant).

The Caverns Historic District
Carlsbad vicinity, New Mexico

Betsy Swanson
825 Calle Mejia #1223
Santa Fe, N.M. 87501

June 1986



Switchback trail into the natural
cave entrance, looking down from
rim of roof of cave, showing lime-
stone retaining walls (Significant)

The Caverns Historic District
Carlsbad vicinity, New Mexico

Betsy Swanson

825 Calle Mejia #1223
Santa Fe, New Mexico 87501

June 1986



Switchback trail (Significant),
amphitheater, left, (Supporting),
and buildings on hill (Significant).

Looking NW.

The Caverns Historic District
Carlsbad vicinity, New Mexico

Betsy Swanson

825 Calle Mejia #1223

Santa Fe, N.M. 87501

June 1986



Footpaths on north slope of Bat Cave Draw, showing rock borders and asphalted limestone pebble surfaces. In center is parking lot. On opposite slope is footpath to Elevator Bldg (now Visitor Center). At right is (1) Bunk House and Mess Hall, NPS Bldg #16, east end which is an earlier random rubble guide's residence incorporated into the bldg.

(All are Significant)

Looking S.

The Caverns Historic District
Carlsbad vicinity, New Mexico

Betsy Swanson
825 Calle Mejia #1223
Santa Fe, N.M. 87501
June 1986



Cactus gardens. (Significant)

Looking W.

The Caverns Historic District.
Carlsbad vicinity, New Mexico

Betsy Swanson
825 Calle Mejia #1223
Santa Fe, N.M. 87501
June 1986



Foot bridge over Bat Cave Draw,
showing masonry abutments. (Signi-
ficant) In background is Nature
Trail (Supporting).

Looking SE.

The Caverns Historic District
Carlsbad vicinity, New Mexico

Betsy Swanson
825 Calle Mejia #1223
Santa Fe, N.M. 87501

June 1986



The Caverns Historic District
Carlsbad vicinity, New Mexico

View looking NE from observation deck
of Visitor Center showing buildings
and parking terraces (Significant).

Betsy Swanson
825 Calle Mejia #1223
Santa Fe, N.M. 87501
December 1985



Amphitheater. (Supporting)
Looking E. into cave entrance.

The Caverns Historic District
Carlsbad vicinity, New Mexico

Betsy Swanson
825 Calle Mejia #1223
Santa Fe, N.M. 87501

June 1986



The Caverns Historic District
Carlsbad vicinity, New Mexico

View looking NE from Elevator Bldg,
in mid-1930s, showing all of orig-
inal limestone building and park-
ing terrace. (Significant)

Photo files, Carlsbad Caverns Nat-
ional Park Headquarters, Carlsbad,
New Mexico.



The Caverns Historic District
Carlsbad vicinity, New Mexico

Looking NE at center of district
with telephoto lens from observation
deck of Visitor Center, showing
(1) Bunk House and Mess Hall in
foreground; (2)(3)(4)(6)(7)(8)
Employee Residences; (11) Power
House; (All Significant); (14)
Utility Building (Supporting).

Parking terrace in foreground
(Significant). Service road
between buildings (Significant).

Betsy Swanson
825 Calle Mejia #1223
Santa Fe, N.M. 87501

December 1985



The Caverns Historic District
Carlsbad vicinity, New Mexico

Looking NE at center of district
with telephoto lens from observation
deck of Visitor Center.

Betsy Swanson
825 Calle Mejia #1223
Santa Fe, N.M. 87501

December 1985



The Caverns Historic District
Carlsbad vicinity, New Mexico

Looking NE from Visitor Center
toward buildings, parking terrace
and cave entrance.

Betsy Swanson
825 Calle Mejia #1223
Santa Fe, N.M. 87501
December 1985



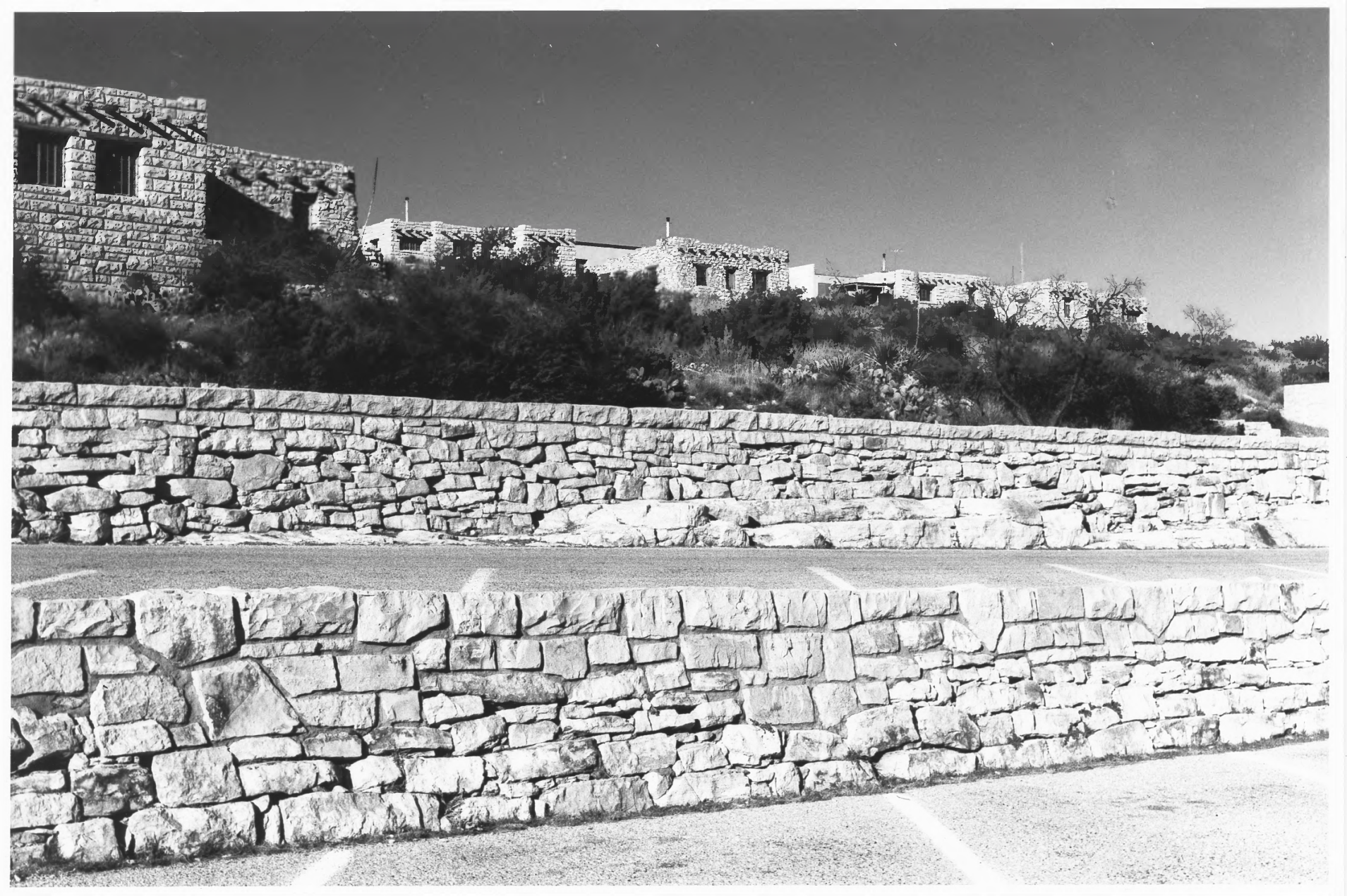
Utility Court.

Looking E.

Caverns Historic District
Carlsbad vicinity, New Mexico

Betsy Swanson
825 Calle Mejia #1223
Santa Fe, N.M. 87501

December 1985



Parking terrace, showing limestone retaining walls, and building on slope of draw. Looking N. (Sig.)

The Caverns Historic District
Carlsbad vicinity, New Mexico

Betsy Swanson

825 Calle Mejia #1223

Santa Fe, N.M. 87501

December 1985



PERSE ROAD

The Caverns Historic District
Carlsbad vicinity, New Mexico

View looking NE from Elevator Bldg,
in mid-1940s, showing adobe build-
ings added to setting or earlier
rock buildings and parking terrace.
(Significant)

Photo files, Carlsbad Caverns Nat-
ional Park Headqters, Carlsbad, N.M.