



United States Department of the Interior

NATIONAL PARK SERVICE
1849 C Street, N.W.
Washington, DC 20240

IN REPLY REFER TO:

Supplementary Listing Record

NRIS Reference Number: 04000962

Date Listed:

Property Name: Uptown Vicksburg Historic District (Boundary Increase)
(Vicksburg MPS)

County: Warren

State: MS

This Property is listed in the National Register of Historic Places in accordance with the attached nomination documentation subject to the following exceptions, exclusions, or amendments, notwithstanding the National Park Service certification included in the nomination documentation

[Handwritten Signature]
Signature of the Keeper

12/28/17
Date of Action

Amended Items in Nomination:
Tax Act Project 37031

The Building at 1417-1419 Washington Street, Vicksburg, Mississippi is considered 2 contributing buildings in the Uptown Vicksburg Historic District (Boundary Increase), listed in the National Register in 2004. Information provided by the MSSHPO and the tax project applicant shows the building is one building and is contributing to the Historic District.

The count to the Uptown Vicksburg Historic District (Boundary Increase) will be decreased by 1.

DISTRIBUTION:

National Register property file
Nominating Authority (without nomination attachment)

NPS Form 10-900
(Rev. 10-90)
United States Department of the Interior
National Park Service

OMB No. 1024-0018



**NATIONAL REGISTER OF HISTORIC PLACES
REGISTRATION FORM**

1. Name of Property

historic name: Uptown Vicksburg Historic District (Boundary Increase)
other names/site number:

2. Location

street & number: mostly on Washington Street between Grove Street and Veto Street
city or town: Vicksburg
state: Mississippi code: MS county: Warren code: 149 zip code: 79180

3. State/Federal Agency Certification

As the designated authority under the National Historic Preservation Act of 1966, as amended, I hereby certify that this X nomination request for determination of eligibility meets the documentation standards for registering properties in the National Register of Historic Places and meets the procedural and professional requirements set forth in 36 CFR Part 60. In my opinion, the property X meets does not meet the National Register Criteria. I recommend that this property be considered significant nationally statewide X locally.

Kenneth H. P. Paul July 29, 2004
Signature of certifying official Date

Deputy State Historic Preservation Officer
State or Federal agency and bureau

In my opinion, the property meets does not meet the National Register criteria. (See continuation sheet for additional comments.)

Signature of commenting or other official Date

State or Federal agency and bureau

4. National Park Service Certification

I, hereby certify that this property is:
✓ entered in the National Register,
 See continuation sheet.
 determined eligible for the
National Register
 See continuation sheet.
 determined not eligible for the
National Register
 removed from the National Register
 other (explain):

for Signature of the Keeper Date of Action
Edson H. Beall 9/10/04

5. Classification

Ownership of Property: private

Number of Resources within Property:
(Do not include previously listed resources in the count)

Category of Property: district

| <u>Contributing</u> | <u>Noncontributing</u> | |
|---------------------|------------------------|------------|
| 42 | 23 | buildings |
| | | sites |
| | | structures |
| | | objects |
| <u>42</u> | <u>23</u> | Total |

Name of related multiple property listing
(Enter "N/A" if property is not part of a multiple property listing.)

**Number of contributing resources previously listed
in the National Register**

Historic Resources of Vicksburg, MS

1

6. Function or Use

Historic Functions:
COMMERCE/TRADE: business
COMMERCE/TRADE: financial institution

Current Functions:
COMMERCE/TRADE: business
COMMERCE/TRADE: financial institution
VACANT

7. Description

Architectural Classification(s):
Italianate; Art Deco; Other: traditional commercial

Materials:
foundation: brick, stucco, concrete
roof: tin, asphalt, slate, rubber, tar
walls: brick, stucco, metal, wood
other

Narrative Description:

See Continuation Sheets

**United States Department of the Interior
National Park Service**

**NATIONAL REGISTER OF HISTORIC PLACES
CONTINUATION SHEET**

Section: 7 Page: 1

Boundary Increase
Uptown Vicksburg Historic District
Vicksburg, Warren County, Mississippi

Narrative Description

The Uptown Vicksburg Historic District in Vicksburg, Mississippi, was listed in the National Register of Historic Places in 1993 and included seventy-three resources in an area roughly bounded by Locust, South, Washington and Clay Streets. The amendment to the Uptown Vicksburg National Register District contains sixty-six buildings in the downtown commercial area of Vicksburg. This district includes buildings on both sides of Washington Street from Grove to Madison Street and also parts of the 700 block of China Street and the 600 block of Clay Street. The district is roughly rectangular and its terrain is generally flat and slopes to the north and west. It is composed entirely of commercial buildings.

Twenty-five of the buildings in the district were constructed during Vicksburg's boom period, 1880 to 1910. There are twenty-one buildings in the district built before 1880 and ten built in the twenty years (1910 to 1930) following the boom period. Only six buildings were constructed between 1931 and 1953, and only four (#17, #28, #36, and #51) were built after the period of significance.

The only building previously listed on the National Register is the Biedenharn Candy Company (#14). In addition to this building, forty-two properties contribute to the district and twenty-three are noncontributing. Of these noncontributing buildings, four post-date the period of significance. Nine others are noncontributing because of relatively superficial changes in the 1970s and could become contributing properties after only a small amount of rehabilitation. However, the other ten noncontributing buildings have been greatly altered and would need substantial rehabilitation in order to become contributing.

Inventory of Resources

C = Contributing resource
NC = Non-contributing resource
PL = Previously listed in the National Register

The inventory is arranged alphabetically by street name in ascending numerical order. Buildings are classified as contributing (C) or non-contributing (NC) to the historic character of the district. The one property that has already been listed in the National Register (#14) is designated as previously listed (PL).

China Street

1. C 715 China Street c. 1913
A one-story concrete block and board and batten commercial building, facing south, with a barrel roof and a metal-covered shed awning over the width of the facade. There is a multi-light fixed sash, a metal garage door, and a series of plate glass windows interrupted by a plate glass single-leaf door. The one-story concrete block office is attached on the right (east) side and has a flat roof, a three-light sash and a single-leaf plate glass door.

United States Department of the Interior
National Park Service

NATIONAL REGISTER OF HISTORIC PLACES
CONTINUATION SHEET

Section: 7 Page: 2

Boundary Increase
Uptown Vicksburg Historic District
Vicksburg, Warren County, Mississippi

-
2. C 721 China Street c. 1888 Romanesque Revival
A two-story brick stables, facing south, with a rubber membrane-covered gable roof hidden behind a tall parapet which is corbelled on the side and rear and Mission-shaped on the front. There is a one-story porch in the front covered by a metal-covered gable roof hidden behind a tall stuccoed parapet with a Mission-shaped front. Originally the two-story building extended to China Street, but in the 1930s three bays were removed and the porch added in order to facilitate the new use of the building as an automobile repair shop. There are three bays: two single-leaf paneled doors and a pair of large hinged double-leaf wooden stable doors. The east side of the building has six four-light round wood-framed windows and a pair of large arched wooden stable doors.
3. C 722 China Street c. 1930
A two-story brick and stucco commercial building, facing north, with a flat roof behind a stepped parapet. The front half of the first floor is an automobile repair area with two single-car bays, filled with roll-up metal doors and one large corner drive through area supported by a stuccoed brick pier. The second floor has six bays: four pair of multi-light louvered sash and two sets of three multi-light louvered sash. Two wide, stylized limestone label lintels link three bays together. Three limestone and stucco panels are set above the bays. Limestone coping highlights the stepped parapet.

Clay Street

4. C 609 Clay Street c. 1900
A two-story brick commercial building, facing south, with a flat roof and a corbelled cornice. There are three bays on the first floor: a pair of eight-over-eight double-hung wood-framed sash set in an arched opening (the arched opening is filled with narrow diagonal boards), a wood pull-up door set in an arched opening (the arched opening is filled with narrow vertical boards), and a single-leaf door opening that has been in-filled with brick, this opening is also arched. There are six arched window openings filled with plywood in the second floor.
5. C 611 Clay Street c. 1905
A two-story brick commercial building, facing south, with a flat roof. There are two bays: a pair of single-light plate glass windows and a single-leaf plate glass door that is recessed, the corner is cut away on the first floor and the second floor is supported by a metal pole. There are two bays on the second floor: two two-over-two double-hung aluminum windows.
6. C 614 Clay Street c. 1950
A three-story with basement brick commercial building, facing north, with a flat roof. There are two bays in the basement: a single-leaf glazed door and a single light fixed sash. There are five bays on the first floor: five casement windows.

United States Department of the Interior
National Park Service

NATIONAL REGISTER OF HISTORIC PLACES
CONTINUATION SHEET

Section: 7 Page: 3

Boundary Increase
Uptown Vicksburg Historic District
Vicksburg, Warren County, Mississippi

Washington Street

7. NC 1100 Washington Street c. 1850
A one-story brick commercial building, facing east, with a flat roof. The L-shaped awning has a shed roof which is supported with square posts linked by arched brackets. The storefront has multi-light storefront windows and a single-leaf paneled door. This building housed the Freedmen's Savings Bank during Reconstruction. At that time the building was two stories with a basement. Following the dissolution of the Freedmen's Bank, this building housed W. T. Montgomery and Company which was owned by Ben and Isaiah Montgomery, ex-slaves of Jefferson and Joseph Davis. The upper story was later removed, and the building no longer retains its historic form.
8. C 1101 Washington Street c. 1850, 1950s, 1970s
A three-story brick commercial building, facing west, with a low gable roof. The full-width awning has a metal-covered shed roof and is supported by metal poles with contemporary metal brackets. The first story has a recessed center entrance consisting of a single-leaf glazed door, flanked by two aluminum double-hung sash windows. There are also three bays on each of the other two floors, containing casement windows with non-historic keystones and non-historic shutters. The new sash and storefront were added in the 1950s. The storefront was again changed to its current configuration in the 1970s.
9. C 1102 Washington Street c. 1870
A two-story brick commercial building, facing east, with a flat roof. The full-width awning has a wood shake-covered shed roof supported by metal poles. The storefront is divided up into two bays which are separated by non-historic brick piers. The first bay contains a single-leaf glazed door with multi-light sidelights and a transom panel. The second bay contains double-leaf glazed doors with multi-light fixed sashes on either side. There are three six-over-six double-hung wood-framed sash on the second floor with new wood blinds.
10. C 1103 Washington Street c. 1880
A two-story brick traditional commercial building, facing west, with a flat roof hidden behind a corbelled parapet. The storefront consists of plate glass over wood paneled bulkheads and the center entrance is recessed and is filled with paired glazed doors. A transom panel runs across the storefront. New brick pilasters, brackets and a dentil molding were added to the facade in the 1990s. Entrance to the second floor was originally gained through a door on the left of the storefront. This was a single-leaf paneled door until it was removed in 2000. There are three six-over-six double-hung windows on the second floor.
11. NC 1104 Washington Street c. 1880, 1950s
A one-story brick commercial building, facing east, with a flat roof which has a bracketed cornice. There are two bays: a multi-light storefront window and a single-leaf glazed door with two-light transom. This building was two stories until the 1950s when it was reduced to the present single story. The full-width flat-roofed awning was added in the 1970s, as was the bracketed cornice and change to the storefront windows.

United States Department of the Interior
National Park Service

NATIONAL REGISTER OF HISTORIC PLACES
CONTINUATION SHEET

Section: 7 Page: 4

Boundary Increase
Uptown Vicksburg Historic District
Vicksburg, Warren County, Mississippi

-
12. C 1105 Washington Street c. 1880
A two-story brick traditional commercial building, facing west, with a flat roof hidden behind a corbelled parapet. The storefront consists of multi-light storefront windows over brick bulkheads and the center entrance is recessed and is filled with paired glazed doors. A transom panel runs across the storefront. New brick pilasters, brackets and a dentil molding were added to the facade in the 1970s. Entrance to the second floor is gained through a door on the right of the storefront. This is a single-leaf glazed door which originally was capped with a transom, but was changed when the rest of the storefront was changed in the 1970s from single-light storefront windows over wood paneled bulkheads. There are three six-over-six double-hung sash on the second floor.
13. NC 1106 Washington Street c. 1880
A two-story brick traditional commercial building, facing east, with a flat roof hidden behind a bracketed parapet. The first floor consists of a single-leaf paneled door with a two-light transom, two storefront windows set over a wood paneled bulkhead and double-leaf glazed doors. A transom panel runs across the storefront. A full-width front porch is covered by a flat roof supported by metal posts. There is a cast iron balustrade on the roof of the porch. There are three bays on the second floor: a single-leaf glazed door and two windows filled with aluminum sash.
14. PL 1107 Washington Street c. 1890
Biedenharn Candy Company
A two-story brick traditional commercial building, facing west, with a flat roof hidden behind a corbelled parapet. The storefront consists of six pair of double-leaf glazed doors. A transom panel across the storefront is divided by cast iron pilasters that separate the pairs of doors. There are six six-over-six double-hung wood-framed sash flanked by wood blinds on the second floor. The full-width front awning is supported by square wooden posts and was added to the building in 1979. Individually listed on the National Register in 1977.
15. C 1108 Washington Street c. 1850, 1970s
A three-story brick traditional commercial building, facing east, with a flat roof hidden behind a corbelled parapet. The first floor is filled with storefront windows over wood bulkheads and capped with a transom panel. Cast iron pilasters are spaced across the facade. The entrance is recessed and is filled with double-leaf glazed doors. There are four windows on the second floor filled with non-historic two-over-two double-hung sash and four windows on the third floor filled with non-historic two-over-two double-hung sash set in arched openings and capped with corbelled brick heads. A full-width front porch has a metal-covered shed roof supported by non-historic wood columns.

**United States Department of the Interior
National Park Service**

**NATIONAL REGISTER OF HISTORIC PLACES
CONTINUATION SHEET**

Section: 7 Page: 5

Boundary Increase
Uptown Vicksburg Historic District
Vicksburg, Warren County, Mississippi

-
16. NC 1117 Washington Street c. 1870, 1970s
Corner Drug Store
A two-and-one-half story brick commercial building, facing west, with a gable roof hidden behind a stepped and bracketed parapet. In the mid-1970s the storefront was altered from traditional storefront with bulkhead with windows and transom panel above to a new brick facade with two recessed single-leaf glazed doors and four multi-light aluminum sash set over wooden panels. An awning was also added at this time with a metal-covered shed roof supported by metal poles. There are six windows on the second floor filled with aluminum sash. Original shaped window heads complete the sash. There are two additional windows in the center of the attic space that are filled with aluminum sash. The in 1970s a four bay addition was made to the north of the building. This two-story brick section has a flat roof and four aluminum bays on the each floor.
17. NC 1203 Washington Street c. 1960s
A two-story brick and stucco commercial building, facing west, with a flat roof. There are two bays: two large multi-light fixed sash in arched openings. A single-leaf glazed door is set into the bay on the right. There is a flat-roofed balcony on the front and side that has a wrought-iron balustrade.
18. C 1205 Washington Street c. 1880
A two-story brick traditional commercial building, facing west, with a flat roof hidden behind a corbelled brick parapet. The storefront in filled with plate glass windows over a brick bulkhead and a single-leaf plate glass door with a transom. There is a full-width shed porch which is supported by metal posts. The storefront originally had a side entrance, a single-leaf glazed door, with the storefront windows all to the right of the door. This configuration was changed in the 1970s and when the porch was added. There are three one-over-one double-hung wood-framed sash on the second floor- originally these were two-over-two.
19. C 1207 Washington Street c. 1880
A two-story brick commercial building, facing west, with a flat roof hidden behind a corbelled brick parapet. The storefront was changed in the 1970s. There are three windows on the second floor filled with non-historic sash. The full-width front porch was added in the 1970s.
20. C 1208 Washington Street c. 1870
A two-story brick traditional commercial building, facing east, with a flat roof hidden behind a corbelled brick parapet. The storefront was changed in the 1960s and then was rebuilt in 2002 to resemble the original single-light storefront window over brick bulkheads and a transom panel across the entire front. A single-leaf glazed door is recessed and cast iron pilasters divide the storefront. There are three bays on the second floor: three two-over-two double-hung sash. A full-width one-story porch was added in 2002 and is supported by metal poles.
21. C 1209 Washington Street c. 1880
A two-story brick and stucco traditional commercial building, facing west, with a flat roof. The storefront is traditional plate glass over wood bulkhead and a single-leaf glazed door. The transom panel has been covered. There are two bays: two six-over-six double-hung sash which are hidden behind blinds.

**United States Department of the Interior
National Park Service**

**NATIONAL REGISTER OF HISTORIC PLACES
CONTINUATION SHEET**

Section: 7 Page: 6

Boundary Increase
Uptown Vicksburg Historic District
Vicksburg, Warren County, Mississippi

-
22. C 1210 Washington Street c. 1911
A three-story brick commercial building, facing east, with a flat roof hidden behind a slightly-stepped parapet that is capped with limestone. The first floor storefront was changed in the c. 1980. The original multi-light-over-multi-light windows on the second and third floors have been in-filled with new brick and three arched aluminum double-hung windows. A full-width front porch was added in the 1970s and is supported with brick columns.
23. C 1211 Washington Street c. 1880
A two-story brick and stucco traditional commercial building, facing west, with a flat roof. The storefront has been recently rebuilt with transoms and plate glass windows over wood paneled bulkheads. The original cast iron pilasters remain. A single-leaf glazed door with transom on the left side provides access to the second floor. There are two bay on the second floor: two-over-two double-hung wood windows.
24. C 1212 Washington Street c. 1912
A two-story brick commercial building, facing east, with a flat roof hidden behind a slightly-stepped parapet that is capped with limestone. The storefront was changed c. 1980. The original three-part bay on the second floor was filled with three multi-light-over-multi-light sash set in a rectangular limestone opening. In the late 1970s this bay was changed to three arched aluminum double-hung sash set in new brick. A one-story full-width front porch was added in the 1970s and is supported with brick columns.
25. C 1214 Washington Street c. 1875
A two-story brick traditional commercial building, facing east, with a flat roof hidden behind a corbelled brick parapet. The storefront is filled with multi-light storefront windows (changed from single light windows c. 1980) over brick bulkheads and a single-leaf glazed door with transom. There are three one-over-one double-hung sash on the second floor capped with arched metal heads. A one-story full-width front porch supported by metal posts was added in the 1980s.
26. C 1216- 1218 Washington Street c. 1875, 1907, 1970s
A three-story brick and stucco commercial building, facing east, with a flat roof. The building was four stories until some time between 1907 and 1913. The first floor is divided into two storefront and new brick bulkheads were added in the 1970s. The full-width shed roof covered porch was added in the 1970s and is supported by metal posts. There are six bays on each floor filled with four-over-six double-hung sash and capped with flat window heads on the second floor and arched window heads on the third floor.
27. NC 1220 Washington Street c. 1870
A two-story brick and stucco traditional commercial building, facing east, with a flat roof behind a corbelled brick parapet. The three second story windows have been stuccoed over with the plain window heads still showing. The storefront was altered in the 1950s. The full-width one-story porch was added in the 1970s and is covered by a shed roof supported by brick columns.

**United States Department of the Interior
National Park Service**

**NATIONAL REGISTER OF HISTORIC PLACES
CONTINUATION SHEET**

Section: 7 Page: 7

Boundary Increase
Uptown Vicksburg Historic District
Vicksburg, Warren County, Mississippi

-
28. NC 1221 Washington Street c. 1960
A modern two-story brick commercial building, facing west, with truncated hip roof pierced by two gabled dormers.
29. C 1222 Washington Street c. 1870
A two-story brick traditional commercial building, facing east, with a flat roof with a projecting metal cornice. The storefront was altered in 1910 after a fire and in the 1960s, however a cast iron column remains on the corner. There are three bays on the second floor: two double-hung windows filled with non-historic sash and a pair of double-hung windows filled with non-historic sash.
30. C 1300 Washington Street c. 1870
This building, facing east, was originally three stories with a flat roof and a wide bracketed cornice. The storefront was filled with single-light sash over metal or wood bulkheads, recessed doors, and a transom panel. The storefront was divided by cast iron pilasters and columns. The third floor was lost during the 1953 tornado and the building was subsequently divided into three buildings. 1300 is a two-story brick traditional commercial building with a flat roof. The first floor contains plate glass storefront windows over a brick bulkhead and a recessed single-leaf plate glass door with a transom. A full-width canvas awning protects the storefront. There are three windows on the second floor which are hidden behind closed shutters.
31. NC 1302 Washington Street c. 1870
A two-story brick traditional commercial building, facing east, with a flat roof hidden behind a flat parapet. The first and second floor facades are completely boarded up. A full-width gallery with a flat roof, supported by metal posts and topped with a wrought iron balustrade was added in 1990.
32. C 1304 Washington Street c. 1870
A two-story brick traditional commercial building, facing east, with a flat roof hidden behind a flat parapet. The storefront on the left side has been recently reestablished after a 1960s renovation and is a traditional glass over wood panel facade with double-leaf glazed doors. The right side of the first floor is boarded-up. The second floor has only one bay filled with modern sash. A full-width gallery with a flat roof, supported by metal posts and topped with a wrought iron balustrade was added c. 1990.
33. C 1306 Washington Street c. 1870
A two-story brick traditional commercial building, facing east, with a projecting cornice. Originally the building was three stories. The storefront was renovated in the 1950s and was reestablished in the 1990s and is made up of plate glass over wooden bulkheads and double-leaf glazed doors. There is a transom over the doors and over each set of windows. A full-width gallery with a flat roof supported by metal posts and topped with a wrought iron balustrade was added in the 1990s. There are three bays on the second floor, filled with non-historic sash. This building was renovated in the 1950s and then again in the 1990s.

United States Department of the Interior
National Park Service

NATIONAL REGISTER OF HISTORIC PLACES
CONTINUATION SHEET

Section: 7 Page: 8

Boundary Increase
Uptown Vicksburg Historic District
Vicksburg, Warren County, Mississippi

-
34. NC 1312 Washington Street c. 1870
A two-story brick commercial building, facing east, that was extensively remodeled in the 1970s. This building was originally two three-story traditional commercial buildings with flat roofs. The facades were changed to a four-bay commercial building with two sets of paired doors and two multi-light fixed sashes. A two-story full-width porch is covered by a truncated hip roof supported by square brick columns. New brick was added to the entire facade and four new bays were added to the second floor.
35. NC 1314-1316 Washington Street c. 1870, c. 1940, 1970s
A three-story brick commercial building, facing east, that was completely renovated in the 1970s to a new appearance. Following a fire in 1939, this building was remodeled by architect John Donovan with polished plate glass and Opalite below with prism glass steel sash transom panel above. In the 1970s new brick was added to the entire facade. Multi-light windows with brick bulkheads and multi-light double-leaf doors fill the storefront. A two-story square brick columns support a projecting room on the third floor. All of the bays have been changed.
36. NC 1318 Washington Street c. 1954
A one-story brick traditional commercial building, facing east, with a flat roof hidden behind a straight parapet. This building was constructed after the 1953 tornado damaged the historic building on this lot. The storefront from this period remains and is comprised of plate glass windows over a brick bulkhead with a recessed single-leaf plate glass door. In the 1970s the full-width porch was added, supported by square wood posts and a wainscot of board and batten was added on the wall above the porch roof.
37. C 1320 Washington Street c. 1885
A two-story brick and stucco commercial building, facing east, with a flat roof hidden behind a plain, straight parapet. This building was three stories tall until the 1953 tornado required the removal of the third floor. The building was remodeled in the 1950s and 1970s but was returned to its original appearance in 2003. The storefront has single light windows over paneled wooden bulkheads with a transom panel across the front. Cast iron pilasters frame the storefront windows. The entrance is recessed and is filled with double-leaf glazed doors. There are three bays on the second floor: three two-over-two double-hung sash with cast iron windows heads.
38. C 1322 Washington Street c. 1885
A two-story brick and stucco commercial building, facing east, with a flat roof hidden behind a plain, straight parapet. This building was three stories tall until the 1953 tornado required the removal of the third floor. The building was remodeled in the 1950s and 1970s but was returned to its original appearance in 2003. The storefront has single-light windows over paneled wooden bulkheads with a transom panel across the front. The entrance - double-leaf glazed doors- is into the canted corner which is supported with an original cast iron column. Cast iron pilasters frame the storefront windows. There are three bays on the second floor: three two-over-two double-hung sash with cast iron windows heads. The entrance to the second floor is gained by a single-leaf paneled door on the right of the facade.

**United States Department of the Interior
National Park Service**

**NATIONAL REGISTER OF HISTORIC PLACES
CONTINUATION SHEET**

Section: 7 Page: 9

Boundary Increase
Uptown Vicksburg Historic District
Vicksburg, Warren County, Mississippi

-
39. NC 1400 Washington Street c. 1870
A one-story brick commercial building, facing east, with a flat roof with a corbelled brick cornice. The top two floors of this building were lost during the 1953 tornado and were not rebuilt. The storefront was also changed to be recessed with the recess supported by square brick columns. Plate glass windows over a brick bulkhead and a single-leaf plate glass door. A full-width canvas awning completes the facade.
40. NC 1404 Washington Street c. 1870
A one-story brick commercial building, facing east, with a metal-covered gable roof. The storefront windows are set over metal bulkheads and there is a single-leaf glazed door. The building shares a porch, supported by square brick columns, with the building to the left. Originally the building was three stories, but damage from the 1953 tornado resulted in the loss of two floors. If the heavy porch was removed the building would be contributing.
41. C 1406 Washington Street c. 1870
A two-story brick and stucco traditional commercial building, facing east, with a flat roof. The original building was three stories. The storefront is plate glass windows over wooden bulkheads with a single-leaf glazed door. There are three six-over-six double-hung wooden sash on the second floor covered by shutters. The building shares a porch, supported by square brick columns, with the building to the right.
42. C 1408 Washington Street c. 1870
A two-story brick and stucco traditional commercial building, facing east, with a flat roof. Originally there were three stories until the 1953 tornado. There are plate glass windows over brick bulkheads and a single-leaf glazed door. A suspended flat awning runs the width of the facade. There are three windows filled with non-historic sash on the second floor topped with cast iron window heads.
43. C 1409 Washington Street c. 1880
A two-story brick traditional commercial building, facing west, with a flat roof hidden behind a heavily corbelled parapet. The storefront has two recessed entrances with single-leaf glazed doors and the plate glass windows are placed over tall brick bulkheads. A full-width front porch, with a steep shed roof, supported by cast iron posts, was added in the 1970s. There are three bays on the second floor filled with non-historic sash and covered by shutters.
44. NC 1411 Washington Street c. 1880
A two-story brick and stucco commercial building, facing west, with a flat roof. The storefront was originally divided into two separate businesses with plate glass windows over brick bulkheads with center recessed entrances. In the 1970s the building was renovated to house one business and the windows were set over a tiled bulkhead, the transom panel has also been covered. The original six bays on the second floor were covered with stucco in the 1970s. If the bays on the second floor were uncovered, the building would be contributing.

**United States Department of the Interior
National Park Service**

**NATIONAL REGISTER OF HISTORIC PLACES
CONTINUATION SHEET**

Section: 7 Page: 10

Boundary Increase
Uptown Vicksburg Historic District
Vicksburg, Warren County, Mississippi

-
45. NC 1412 and 1414 Washington Street c. 1890
A two-story brick commercial building, facing east, with a flat roof. The building was completely changed in the 1970s with new windows added to the storefront, new porch, cornice, brick veneer, and windows on the second floor. Prior to this renovation, the building was divided into two storefronts with single-light plate glass over tiled bulkheads with center entrances filled with double-leaf glazed doors. A transom panel ran across the facade and there were six one-over-one double-hung sash on the second floor.
46. NC 1415 Washington Street c. 1880, 1960s, 1980s
A two-story brick and stucco commercial building, facing west, with a flat roof. This building was a traditional commercial with a facade divided into two storefronts with separate entrances and a transom panel running across the width. There were six windows on the second floor with cast iron window heads. The cornice was enhanced with corbelled brick. In the 1960s the building was renovated into a Walgreen's with new sash and storefront. In the 1980s the building was again renovated to the current appearance: four single-light fixed sash and a recessed entry filled with double-leaf plate glass doors. The second floor windows are filled with new sash. The cornice was added at this time as well.
47. NC 1416 Washington Street c. 1890
A two-story brick and stucco commercial building, facing east, with a flat roof. The storefront is filled with new multi-light sash and double-leaf glazed doors. There are two bays on the second floor fill with non-historic sash. These changes and a full-width front porch with a shed roof supported with metal poles were added in the 1970s.
48. C 1417 Washington Street c. 1880
A two-story brick traditional commercial building, facing west, with a flat roof hidden behind a corbelled parapet. The storefront windows are set over vertical wood bulkheads. Cast iron pilasters flank the storefront. The deeply recessed entry is filled with a single-leaf plate glass door. A transom panel runs the width of the facade. A one-story porch was built across this building and the building to the south in 2003. There are three floor-length four-over-six double-hung windows on the second floor, enhanced with cast iron window heads.
49. NC 1418 Washington Street c. 1953, 1970s
A one-story brick commercial building, facing east, with a flat roof hidden behind a tall plain parapet. The storefront was changed in the 1970s from the traditional storefront (windows- bulkhead- transom panel) to a new brick three-bay facade with modern sash.
50. C 1419 Washington Street c. 1880
A two-story brick traditional commercial building, facing west, with a flat roof hidden behind a corbelled parapet. The storefront is filled with plate glass windows set over wooden bulkheads, a single-leaf glazed door as the entry, a single-leaf paneled door as the entry to the second floor, and a transom panel that runs across the facade. There are four four-over-six double-hung sash on the second floor, enhanced with cast iron window heads. A one-story porch was built across this building and the building to the north in 2003.

**United States Department of the Interior
National Park Service**

**NATIONAL REGISTER OF HISTORIC PLACES
CONTINUATION SHEET**

Section: 7 Page: 11

Boundary Increase
Uptown Vicksburg Historic District
Vicksburg, Warren County, Mississippi

-
51. NC 1420 Washington Street c. 1954
A one-story brick commercial building, facing east, with a flat roof. The storefront is filled with plate glass windows set over brick bulkheads. There are two entrances filled with plate glass doors.
52. C 1421 Washington Street c. 1912
The Valley Department Store
A six-story brick department store building, facing west, with a flat roof. Originally the first floor was filled with plate glass windows set over brick bulkheads and a suspended awning ran across the width of the building. In the 1970s, the first and second floor windows were changed and a two-story porch was added. Mirrored glass panels were placed over the original two-over-two wood framed windows, all of which remain intact and a two-tiered porch was added to the front and side. The interior retains an almost original appearance with original floors, etc.
53. C 1500 Washington Street c. 1930
A two-story tan brick commercial building, facing east, with a flat roof enhanced by a patterned limestone cornice. The storefront windows are set over a tiled bulkhead. The entrance is recessed and is filled with a pair of single-leaf glazed doors. There are three bays: two sets of three two-over-two double-hung windows and a center four-part bay with two single-light fixed sash flanked by two-over-two double-hung sash.
54. NC 1501 Washington Street c. 1912, c. 1954, 1970s
Alamo Theater Building
A two-story brick commercial building, facing west, with a flat roof and a plain projecting cornice. The building was originally built as a theater. The first floor was deeply recessed and a marquee extended from the front on the first floor and was supported by a large square brick pier in which the ticket booth was housed. There were three bays on the second floor and the roof was a low gable pierced by at least one chimney. In the 1970s the facade was changed to its current appearance — plate glass windows at the sidewalk and a deeply recessed center entrance. The building evidently suffered substantial damage during the 1953 tornado, and the second story of the facade was subsequently rebuilt with no window openings and covered with stucco. The building is noncontributing in its present condition.
55. C 1503 Washington Street c. 1880
A two-story brick commercial building, facing west, with a flat roof. The first floor is filled with plate glass windows and a center recessed entry is filled with a plate glass door. A full-width wood panel covers the transom panel and area above to just under the second floor windows. There are three bays on the second floor: three two-over-two double-hung sash.
56. NC 1504 Washington Street c. 1915, 1970s
A two-story brick, stucco and stone commercial building, facing east, with a flat roof. The storefront was changed in the 1970s with stone veneer and new plate glass windows. The second floor has been totally covered with stucco.

United States Department of the Interior
National Park Service

NATIONAL REGISTER OF HISTORIC PLACES
CONTINUATION SHEET

Section: 7 Page: 12

Boundary Increase
Uptown Vicksburg Historic District
Vicksburg, Warren County, Mississippi

-
57. C 1505 Washington Street c. 1952
A two-story brick commercial building, facing west, with a flat roof. The plate glass windows are set on brick bulkheads and the transom panel is covered by a vertical board panel. There are three louvered sash on the second floor.
58. C 1507 Washington Street c. 1890
A two-story brick commercial building, facing west, with a flat roof. There are plate glass windows set on a brick bulkhead and a single-leaf glazed door. The transom panel was covered by a vertical wood panel in the 1970s. The two bays on the second floor are louvered sash.
59. NC 1508 Washington Street c. 1890
A one-story brick commercial building, facing east, with a flat roof. The original storefront windows are now filled with multi-light windows set in a new brick wall (1980s). The transom panel and the top of the wall are covered by wood board and batten. A porch runs across the front of the building.
60. C 1509 Washington Street c. 1930 Art Deco
A three-story stucco Art Deco commercial building, facing west, with a flat roof. The storefront is filled with single-light sash set over brick bulkheads and a center entrance with double-leaf glazed doors. Art Deco aluminum panels enhance the corners of the storefront. There is a center bay of vertical fixed sash that runs from the second floor to the third floor. Two windows (currently boarded up) are set to each side of the center bay on each floor. The stepped parapet is corbelled. The building has been recently purchased by the City of Vicksburg and will be rehabilitated to its original appearance.
61. NC 1512 Washington Street c. 1970s
A modern one story brick commercial building, facing east, with a flat roof. The facade is filled with plate glass windows and a two pair of double-leaf glazed doors.
62. C 1515 Washington Street c. 1950
A one-story brick commercial building, facing west, with a flat roof. The plate glass windows are set over brick bulkheads and the entrance is a single-leaf glazed door. A metal-covered awning covers the front of the building.
63. C 1517 Washington Street c. 1870
A two-story brick commercial building, facing west, with a flat roof hidden behind a corbelled brick parapet. The storefront is filled with single-light sash set over beaded board paneled bulkheads and there is a single-leaf glazed door recessed in the middle of the facade. The storefront is framed by cast iron pilasters and a transom panel runs across the facade. There are three four-over-four double-hung sash on the second floor. The building is currently boarded up, but was recently purchased by the City of Vicksburg and will be rehabilitated.

**United States Department of the Interior
National Park Service**

**NATIONAL REGISTER OF HISTORIC PLACES
CONTINUATION SHEET**

Section: 7 Page: 13

Boundary Increase
Uptown Vicksburg Historic District
Vicksburg, Warren County, Mississippi

-
64. C 1519 Washington Street c. 1892
A two-story brick commercial building, facing west, with a flat roof. The storefront is filled with single-light sash set over beaded board panel bulkheads and there is a single-leaf glazed door recessed in the middle of the facade. A single-leaf glazed door is set on the left side to provide access to the second floor. The storefront is framed by cast iron pilasters. A transom panel runs across the facade. There are two two-over-two double-hung sash on the second floor. The building is currently boarded up, but was recently purchased by the City of Vicksburg and will be rehabilitated.
65. C 1521 Washington Street c. 1924
A two-story brick commercial building, facing west, with a flat roof hidden behind a corbelled brick parapet. The storefront is made up of multi-light sash set over wood panels and the entry is a single-leaf glazed door. The transom panel is covered by a shed-covered full-width porch supported with metal poles. The porch was added in the 1970s.
66. C 1622 Washington Street c. 1945
Mississippi Hardware Company Building
A three-story brick industrial building with a low gable roof. The first floor facade is filled with single and paired six-over-six double-hung metal-framed windows, a pair of plate glass doors, and two loading bay doors. The entire second and third floor facades are filled with multi-light metal-framed pivot sash without separation between them. A suspended metal awning covers the entire first floor. This building was built as a shirt factory. It has housed the Mississippi Hardware Company since about 1956.

8. Statement of Significance

Applicable National Register Criteria

- A** Property is associated with events that have made a significant contribution to the broad patterns of our history.
- B** Property is associated with the lives of persons significant in our past.
- C** Property embodies the distinctive characteristics of a type, period, or method of construction or represents the work of a master, or possesses high artistic values, or represents a significant and distinguishable entity whose components lack individual distinction.
- D** Property has yielded, or is likely to yield information important in prehistory or history.

Areas of Significance

Architecture

Period of Significance

1830-1953

Significant Dates

Criteria Considerations:

Property is:

- A** owned by a religious institution or used for religious purposes.
- B** removed from its original location.
- C** a birthplace or a grave.
- D** a cemetery.
- E** a reconstructed building, object, or structure.
- F** a commemorative property.
- G** less than 50 years of age or achieved significance within the past 50 years.

Significant Person(s)

Cultural Affiliation(s)

Architect/Builder

Narrative Statement of Significance: See continuation sheets.

9. Major Bibliographical References

Bibliography See continuation sheet.

Previous documentation on file (NPS)

- preliminary determination of individual listing (36 CFR 67) has been requested.
- previously listed in the National Register
- previously determined eligible by the National Register
- designated a National Historic Landmark
- recorded by Historic American Buildings Survey

- recorded by Historic American Engineering Record

Primary Location of Additional Data

- State Historic Preservation Office
 - Other State agency
 - Federal agency
 - Local government
 - University
 - Other
- Name of repository:
Vicksburg Foundation for Historic Preservation

United States Department of the Interior
National Park Service

NATIONAL REGISTER OF HISTORIC PLACES CONTINUATION SHEET

Section: 8 Page: 14

Boundary Increase
Uptown Vicksburg Historic District
Vicksburg, Warren County, Mississippi

Statement of Significance

The Uptown Vicksburg Historic District, listed on the National Register in 1993, contains a major concentration of architecturally and historically significant buildings and is the governmental, commercial and social center of Vicksburg. As originally listed, the district included only a portion of the Washington Street commercial area because a number of the buildings had been substantially remodeled during a 1970s Urban Renewal project. However, during the past five years this area has experienced a revitalization and many of these buildings have been rehabilitated to their historical appearance. In addition, the non-historic street configuration and landscaping dating from the 1970s Urban Renewal project were removed in 2003 and the original configuration of the street has been reestablished. A number of the buildings along Washington Street were purchased in 2002 and 2003 by the City of Vicksburg and will be rehabilitated to their historic appearances through the use of historic photographs, thus allowing these buildings to have contributing status.

The period of significance specified for the original Uptown Vicksburg Historic District was 1830 to 1940. The year 1940 was selected as the end date of the original period of significance simply in order to include the date of construction of the most recent "historic" building included within the original district boundaries. In this amendment, the period of significance of the district is changed to 1953. There are two reasons for the selection of this end date. First, it is fifty years prior to the date of the initial preparation of this document. Second, the City of Vicksburg suffered a devastating tornado on December 5, 1953, which destroyed many buildings and damaged many others. The destruction wrought by the tornado and the substantial amount of new construction and renovation that followed divide the architectural history of Vicksburg during the twentieth century into distinct "pre-tornado" and "post-tornado" periods. The change of the period of significance will have no effect on the original Uptown Vicksburg Historic District, because none of the buildings in the original district was built or substantially remodeled between 1940 and 1953. There was, however, some construction during those years in the Washington Street commercial center that constitutes this boundary increase area, including the Mississippi Hardware Company Building (#66), which was built about 1945.

Washington Street became Vicksburg's "Main Street" in 1839 after a fire destroyed the city's central business district then located on Main Street. From the 1840s until about 1910 Vicksburg was the chief commercial center of Mississippi, and Washington Street was the heart of that center. Three and four story commercial buildings, mostly in the Italianate style, were filled with every conceivable commodity and service. In 1865 the Vicksburg branch of the newly established Freedmen's Savings Bank was housed in the building at 1100 Washington Street. Following the dissolution of the Freedmen's Bank, this building housed W. T. Montgomery and Company, which was owned by Ben and Isaiah Montgomery, who had formerly been slaves of Jefferson and Joseph Davis. From 1902 to 1909 the Lincoln Savings Bank, the first African-American-owned bank in Mississippi, was housed in the building at 1106 Washington Street. Other buildings on the street housed both black and white businesses and offices and provided housing on the upper floors. Sanborn Insurance maps reveal that prior to the automobile, there were stables on nearly every corner in downtown Vicksburg. The only remaining commercial stable that still resembles a stable is included in this district. The Bazsinsky Stables (# 2) was built in 1888 and although it was remodeled in the 1930s for automobile repairing, retains its integrity.

United States Department of the Interior
National Park Service

NATIONAL REGISTER OF HISTORIC PLACES CONTINUATION SHEET

Section: 8 Page: 15

Boundary Increase
Uptown Vicksburg Historic District
Vicksburg, Warren County, Mississippi

This portion of Washington Street included in this boundary increase has been impacted by a series of events that have changed the streetscape. Fires in 1846, 1885, 1910, 1939, and 1952; bombardment from gunboats during the Civil War; a tornado in 1953; and an Urban Renewal program in the 1970s have combined to alter the face of Vicksburg's main commercial street. Many of the buildings that were three and four stories tall prior to 1953 were reduced to one and two stories when a devastating tornado ripped through the heart of downtown on December 5, 1953. A federal Urban Renewal project in the 1970s promised an invigorated downtown area if storefronts were modernized and vacant buildings were demolished. Washington Street became the heart of this project, as a result of which numerous buildings were demolished, two blocks of the street were converted into a pedestrian mall, and many storefronts were redesigned to give them a more modern appearance. In the last few years, many of these modern storefronts have been removed and historically appropriate ones have been built using historic photographs. The street has been repaved with brick and has been returned to its two-way configuration.

As a result of the recent street restoration and the many storefront rehabilitations, the commercial area of Washington Street has regained much of its historic character, and it now possesses a sufficiently high degree of architectural integrity to warrant its inclusion within an expanded Uptown Vicksburg Historic District.

**United States Department of the Interior
National Park Service**

**NATIONAL REGISTER OF HISTORIC PLACES
CONTINUATION SHEET**

Section: 9 Page: 16

Boundary Increase
Uptown Vicksburg Historic District
Vicksburg, Warren County, Mississippi

Bibliography

Bell, Nancy H. Multiple Property National Register Nomination Form for the Historic Resources of Vicksburg, Mississippi.

Chapman, H. P. and J. F. Battaile. *Picturesque Vicksburg*. Vicksburg: Vicksburg Printing and Publishing Company, 1895.

City Directories for Vicksburg, Mississippi: 1866, 1877, 1886, 1895, 1904, 1906, 1911, 1924. On file with the Vicksburg Foundation for Historic Preservation (Vicksburg, MS).

Gibraltar Publishing Company. *In and About Vicksburg*, 1890. Vicksburg: Gibraltar Publishing Company.

Historic Resources Inventory, Vicksburg, Mississippi. On file with the Vicksburg Foundation for Historic Preservation (Vicksburg, MS).

O'Neill, J. Cyril. *Early Twentieth Century Vicksburg, 1900-1910*. Raymond, Mississippi: Keith Press, 1976.

Photographs, Old Court House Museum Collection, Old Court House Museum, Vicksburg, Mississippi.

Sanborn Fire Insurance Maps for Vicksburg, Mississippi: 1886, 1892, 1897, 1902, 1907, 1913, 1925. On file with the Vicksburg Foundation for Historic Preservation (Vicksburg, MS).

Vicksburg Evening Post. A Centennial Edition 1825-1925.

Vicksburg Foundation for Historic Preservation. *Historic Vicksburg Walking Tour Guide*. Vicksburg: Vicksburg Foundation for Historic Preservation, 1987.

Vicksburg Herald. A Commercial and Historic Vicksburg. Vicksburg: *Vicksburg Herald*, 1907.

Warren County Deed Books, Will Books, Tax Records. On file at the Warren County Courthouse (Vicksburg, MS)

Yeager, Lt. John Lynn. *Wrapped in Flames. History of the Vicksburg Fire Department, 1837-1976*. Vicksburg: John Yeager, 1976.

10. Geographical Data

Acreage of Property: approximately 14 acres

| | | | | | | | |
|-----------------|-------------|----------------|-----------------|--|-------------|----------------|-----------------|
| UTM References: | <u>Zone</u> | <u>Easting</u> | <u>Northing</u> | | <u>Zone</u> | <u>Easting</u> | <u>Northing</u> |
| | A 15 | 699215 | 3581450 | | C 15 | 699340 | 3580740 |
| | B 15 | 699440 | 3581430 | | D 15 | 699160 | 3580780 |

Verbal Boundary Description See continuation sheet.

Boundary Justification: See continuation sheet.

11. Form Prepared By

| | | | |
|------------------|--|------------|--------------|
| name/title: | Nancy H. Bell, Executive Director | | |
| organization: | Vicksburg Foundation for Historic Preservation | date: | July 2, 2003 |
| street & number: | P. O.Box 254 | telephone: | 601-636-5010 |
| city or town: | Vicksburg | state: | MS |
| | | zip code: | 39181 |

Additional Documentation

Submit the following items with the completed form:

Continuation Sheets

Maps

A USGS map (7.5 or 15 minute series) indicating the property's location.

A sketch map for historic districts and properties having large acreage or numerous resources.

Photographs

Representative black and white photographs of the property.

Additional items (Check with the SHPO or FPO for any additional items)

Property Owner(s)

| | | | |
|------------------|-------------------------|------------|--|
| name: | multiple (more than 50) | telephone: | |
| street & number: | | zip code: | |
| city or town: | | state: | |

Paperwork Reduction Act Statement: This information is being collected for applications to the National Register of Historic Places to nominate properties for listing or determine eligibility for listing, to list properties, and to amend existing listings. Response to this request is required to obtain a benefit in accordance with the National Historic Preservation Act, as amended (16 U.S.C. 470 et seq.).

Estimated Burden Statement: Public reporting burden for this form is estimated to average 18.1 hours per response including the time for reviewing instructions, gathering and maintaining data, and completing and reviewing the form. Direct comments regarding this burden estimate or any aspect of this form to the Chief, Administrative Services Division, National Park Service, P.O. Box 37127, Washington, DC 20013-7127; and the Office of Management and Budget, Paperwork Reductions Projects (1024-0018), Washington, DC 20503.

**United States Department of the Interior
National Park Service**

**NATIONAL REGISTER OF HISTORIC PLACES
CONTINUATION SHEET**

Section: 10, Photographs Page: 17

Boundary Increase
Uptown Vicksburg Historic District
Vicksburg, Warren County, Mississippi

GEOGRAPHICAL DATA

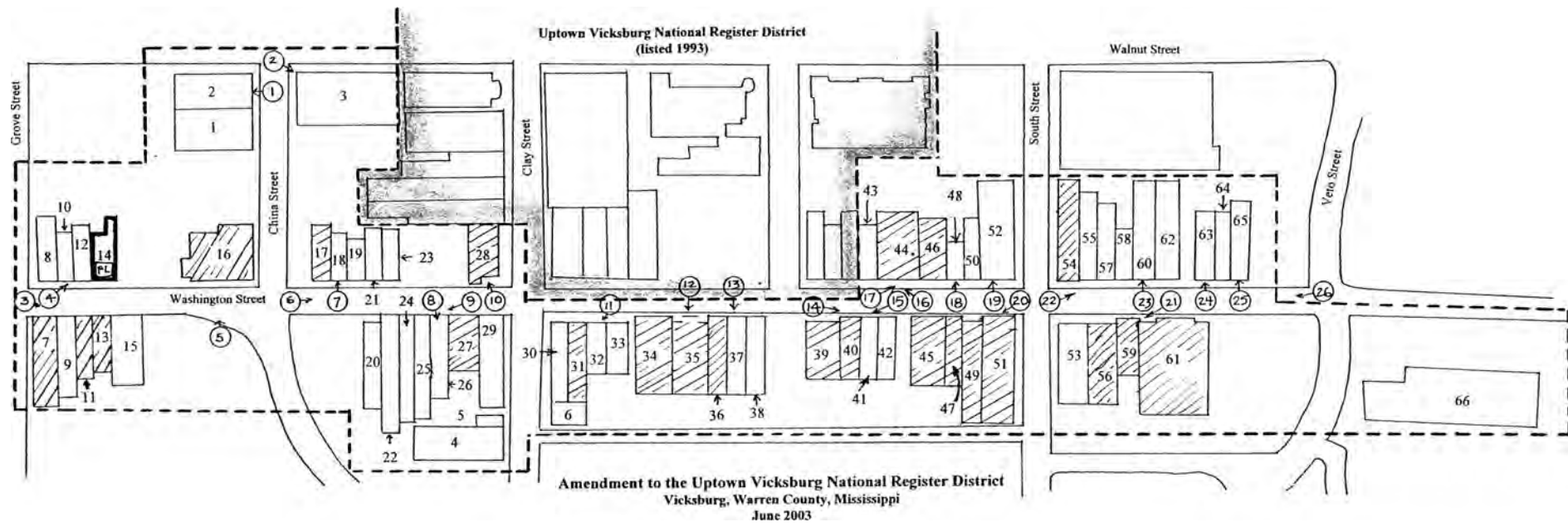
Verbal Boundary Description: The area of the Boundary Increase for the Uptown Vicksburg Historic District is shown on the enclosed scale map, based on planimetric maps of the City of Vicksburg.

Boundary Justification: The Boundary Increase area contains a group of contiguous commercial buildings immediately adjacent to the existing Uptown Vicksburg Historic District, representing the historic and architectural development of the commercial center of Vicksburg during the period of significance of the district.

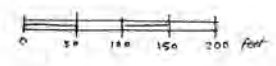
PHOTOGRAPHS

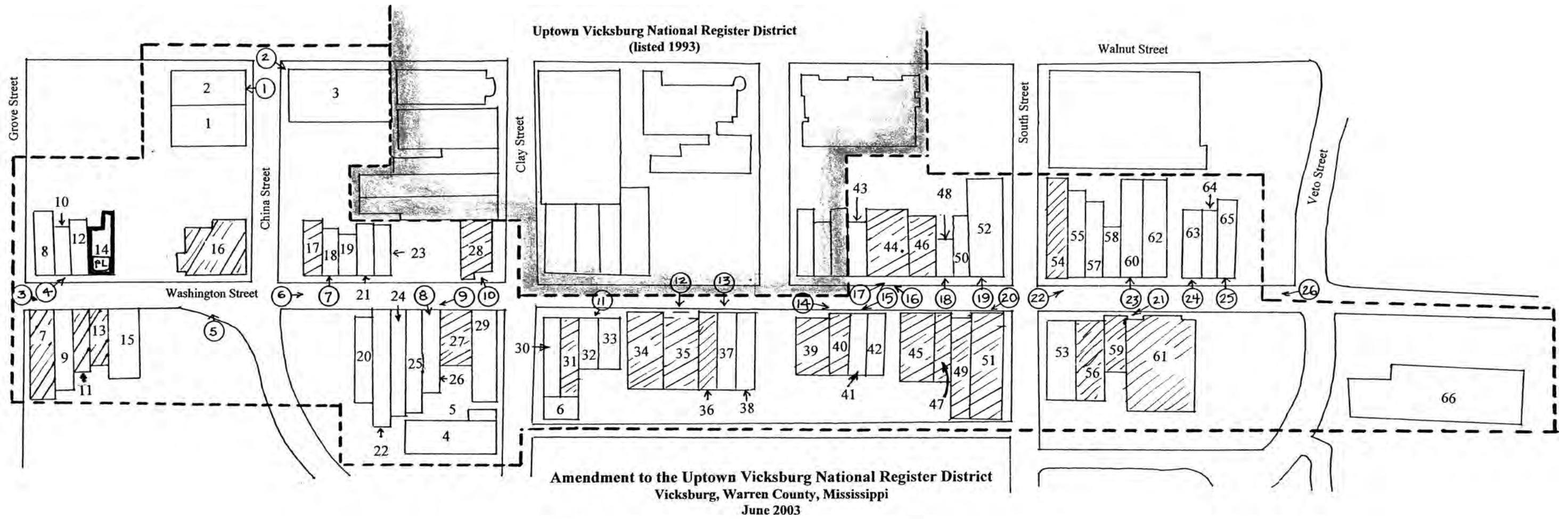
1. Amendment to the Uptown Vicksburg National Register District
2. Vicksburg, Warren County, Mississippi
3. Nancy H. Bell
4. November 2003
5. Mississippi Department of Archives and History

| | |
|----------------|--|
| Photo 1 of 14 | Streetscape of the 1100 block of Washington Street (west side), facing southwest |
| Photo 2 of 14 | View of 1107 Washington Street (west elevation), facing southeast |
| Photo 3 of 14 | Streetscape of the 1200 block of Washington Street (west side), facing southwest |
| Photo 4 of 14 | View of 1211 Washington Street (west elevation), facing southeast |
| Photo 5 of 14 | View of 1320-1322 Washington Street (east elevation), facing west |
| Photo 6 of 14 | Streetscape of the 1400 block of Washington Street (east side), facing southeast |
| Photo 7 of 14 | Streetscape of the 1400 block of Washington Street (west side), facing west |
| Photo 8 of 14 | Streetscape of the 1400 block of Washington Street (east side), facing southeast |
| Photo 9 of 14 | View of 1421 Washington Street (west elevation), facing east |
| Photo 10 of 14 | View of 1500 Washington Street (east elevation), facing west |
| Photo 11 of 14 | Streetscape of the 1500 block of Washington Street (east side), facing northeast |
| Photo 12 of 14 | View of 1509 Washington Street (west elevation), facing northeast |
| Photo 13 of 14 | View of 1521 Washington Street (west elevation), facing east |
| Photo 14 of 14 | View of 1622 Washington Street (west and north elevations), facing southwest |



(2) ↗ photograph number and direction
 □ contributing resource
 ▨ noncontributing resource





- ② photograph number and direction
- contributing resource
- ▨ noncontributing resource

◀ North





WATER

WATER

Screen Printing

Souvenir T-Shirts

PHOTO

ANTIQUE AND MUSE

372 0222 N N N+1 2

1100 block (west side) Washington St.
Amendment to Uptown Vicksburg H.D.
Vicksburg, Warren County, MS
Nancy H. Bell
November 2003
Photo 1 of 14



BIEDENHARN CANDY CO.

1107 Washington St
Biederharn Coca-Cola
Museum,

Amendment to Uptown
Vicksburg H.P.

Vicksburg, Warren County, MS

Nancy H. Bell

Nov. 2003

Photo 2 of 14



872 0222 N N 14-1 2

1200 block (west side) Washington St
Amendment to Uptown Vidisburg H.D
Vidisburg, Warren County, MS
Nancy H. Bell
November 2003
Photo 3 of 14



SHOP.

1211 Washington Street
Amendment to Uptown
Vicksburg District
Vicksburg, Warren County, MS
Nancy H. Bell
November 2003
Photo 4 of 14

2025 RELEASE UNDER E.O. 14176



872 0232 N N N+1 2

1320-22 Washington Street
Amendment to Uptown Vicksburg
Vicksburg, Warren County, MS
Nancy H. Bell
~~May~~ 2003 November
Photo 5 of 14



1400 block (east side) Washington St
Amendment to Uptown Vicksburg
Vicksburg, Warren County, MS
Nancy H. Bell
November 2003
Photo 6 of 14

3720222 N N N 12



CANIZARO
JOSEPH
JEWELERS

CANIZARO'S
JEWELERS

Safiras

372 0222 H H H+2 2

1400 block (west side) Washington St.
Amendment to Uptown Vicksburg
Vicksburg, Warren County, MS
Nancy H. Bell
November 2003
Photo 7 of 14



11:30'03

872 0222 N N N#12

1400 block (east side) Washington Street
Amendment to Uptown Vicksburg NR Dist.
Vicksburg, Warren County, MS
Nancy H. Bell
November 2003
Photo 8 of 14



1421 Washington Street
Amendment to Uptown Vicksburg
Vicksburg, Warren County, MS
Nancy H. Bell
November 2003
Photo 9 of 14

8730222 N N N+12



3720222 R H H*22

1500 Washington Street
Ameudment to Uptown Vicksburg NR
Vicksburg, Warren County, MS
Naucy H. Bell
November 2003
Photo 10 of 14



SUPER TEN

11 30 '03

6500 block (east side) Washington Street
(view to northeast)

Amendment to Uptown Vicksburg NR
Vicksburg, Warren County, MS
Nancy H. Bell

November 2003
Photo 11 of 14



SUPER TEN

SUPER TEN

BEER

SALES

1509 Washington Street
Amendment to Uptown
Vicksburg NE District
Vicksburg, Warren County, MS
Nancy H. Bell
November 2003
Photo 12 of 14



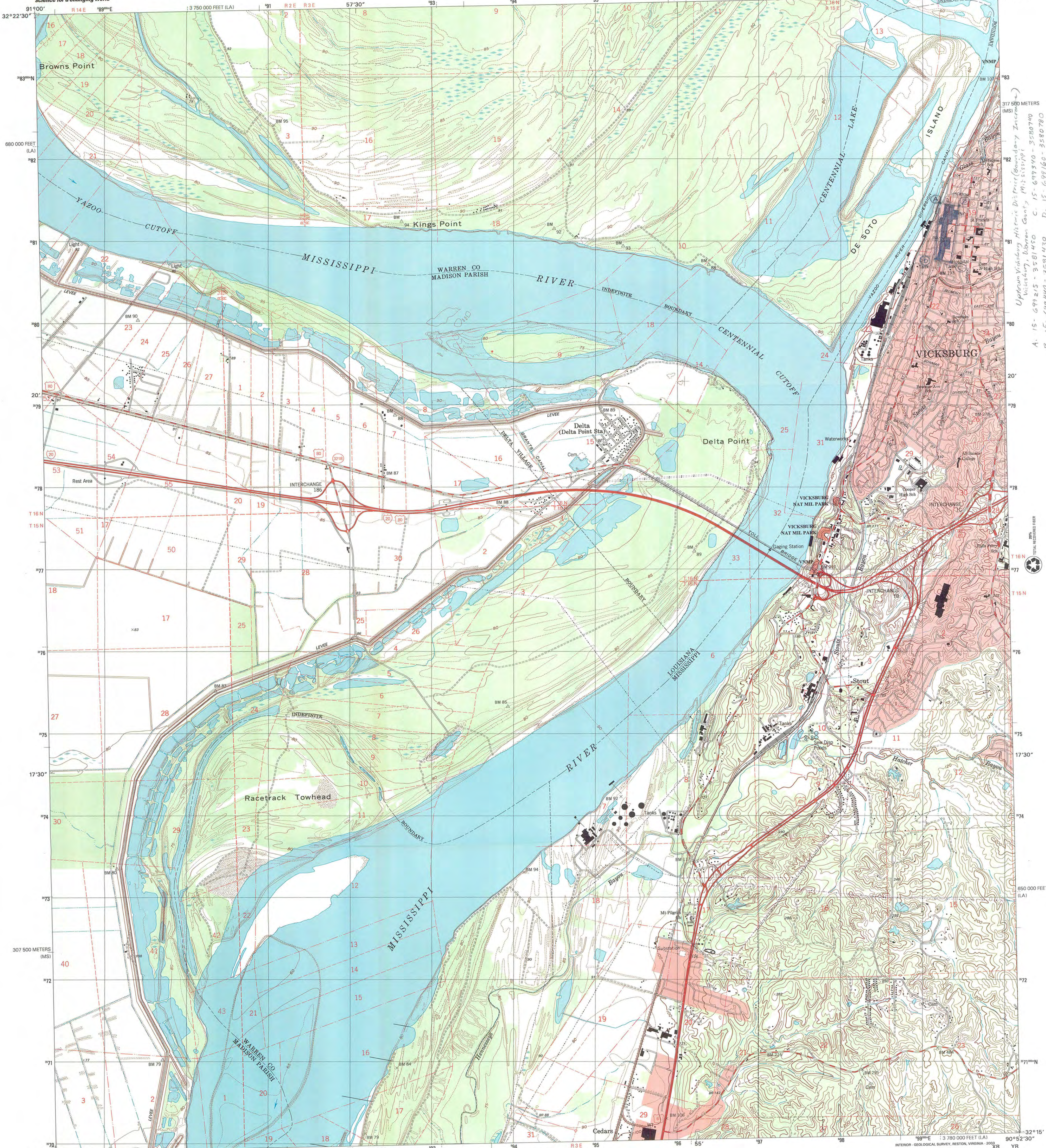
1521 Washington Street
Amendment to Uptown
Vicksburg NR District
Vicksburg, Warren County, MS
Nancy A. Bell
November 2003
Photo 13 of 14

972 0222 N N 1412



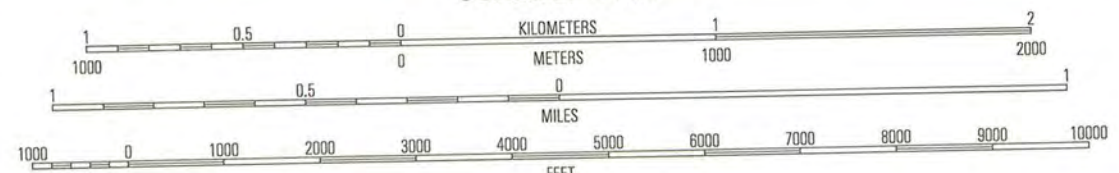
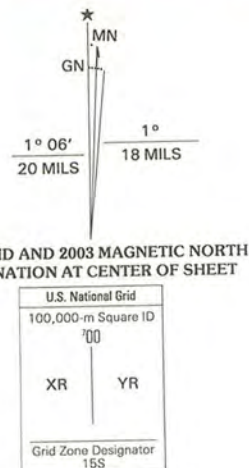
872 0222 H H H 1 2

1622 Washington Street
Amendment to Uptown Vicksburg NR.
Vicksburg, Warren County, MS
Nancy H. Bell
November 2003
Photo 14 of 14



Upper Vicksburg Historic District (Boundary Increase)
Vicksburg, Warren County, MS: 699340 - 3580740
A: 15 - 699215 - 3581450 C: 15 - 699160 - 3580780
B: 15 - 699440 - 3581430 D: 15 - 699160 - 3580780

Produced by the United States Geological Survey
Topography compiled 1962. Planimetry derived from imagery taken 1998 and other sources. Public Land Survey System and survey control current as of 1962. Boundaries current as of 2002.
North American Datum of 1983 (NAD 83). Projection and 1 000-meter grid: Universal Transverse Mercator, zone 15S
2 500-meter ticks; Mississippi Coordinate System of 1983 (west zone)
10 000-foot ticks; Louisiana Coordinate System of 1983 (north zone)
North American Datum of 1927 (NAD 27) is shown by dashed corner ticks. The values of the shift between NAD 83 and NAD 27 for 7.5-minute intersections are obtainable from National Geodetic Survey NADCON software
There may be private inholdings within the boundaries of the National or State reservations shown on this map
Houses of worship, schools, and other labeled buildings verified 1962

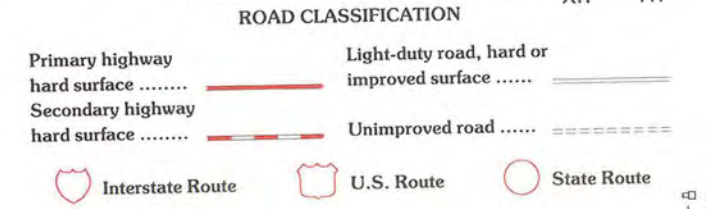


THIS MAP COMPLIES WITH NATIONAL MAP ACCURACY STANDARDS
FOR SALE BY U.S. GEOLOGICAL SURVEY, P.O. BOX 25286, DENVER, COLORADO 80225
AND LOUISIANA DEPARTMENT OF TRANSPORTATION AND DEVELOPMENT, BATON ROUGE, LOUISIANA 70804
A FOLDER DESCRIBING TOPOGRAPHIC MAPS AND SYMBOLS IS AVAILABLE ON REQUEST



| | | | |
|---|---|---|------------------|
| 1 | 2 | 3 | 1 Ashby |
| | | | 2 Long Lake |
| | | | 3 Redwood |
| 4 | 5 | 6 | 4 Wood |
| | | | 5 Vicksburg East |
| | | | 6 Bedford |
| | | | 7 Vidanna |
| 6 | 7 | 8 | 8 Big Black |

ADJOINING 7.5' QUADRANGLES
LA 41C



VICKSBURG WEST, MS-LA
1998
NIMA 2848 IV SW-SERIES V843



UNITED STATES DEPARTMENT OF THE INTERIOR
NATIONAL PARK SERVICE

NATIONAL REGISTER OF HISTORIC PLACES
EVALUATION/RETURN SHEET

REQUESTED ACTION: NOMINATION

PROPERTY Uptown Vicksburg Historic District (Boundary Increase)
NAME:

MULTIPLE Vicksburg MPS
NAME:

STATE & COUNTY: MISSISSIPPI, Warren

DATE RECEIVED: 7/30/04 DATE OF PENDING LIST: 8/26/04
DATE OF 16TH DAY: 9/10/04 DATE OF 45TH DAY: 9/12/04
DATE OF WEEKLY LIST:

REFERENCE NUMBER: 04000962

REASONS FOR REVIEW:

APPEAL: N DATA PROBLEM: N LANDSCAPE: N LESS THAN 50 YEARS: N
OTHER: N PDIL: N PERIOD: N PROGRAM UNAPPROVED: N
REQUEST: N SAMPLE: N SLR DRAFT: N NATIONAL: N

COMMENT WAIVER: N

ACCEPT RETURN REJECT 9/10/04 DATE

ABSTRACT/SUMMARY COMMENTS:

**Entered in the
National Register**

RECOM./CRITERIA _____

REVIEWER _____ DISCIPLINE _____

TELEPHONE _____ DATE _____

DOCUMENTATION see attached comments Y/N see attached SLR Y/N

If a nomination is returned to the nominating authority, the nomination is no longer under consideration by the NPS.