

UNITED STATES DEPARTMENT OF THE INTERIOR  
NATIONAL PARK SERVICE

NATIONAL REGISTER OF HISTORIC PLACES  
EVALUATION/RETURN SHEET

Requested Action: Removal REMOVED  
from  
National Register  
Property Name: Dotsero Bridge  
Multiple Name: Highway Bridges in Colorado MPS  
State & County: COLORADO, Eagle

Date Received: 9/25/2017      Date of Pending List: 11/6/2017 2:32:41 PM      Date of 16th Day: 11/13/2017      Date of 45th Day: 11/9/2017      Date of Weekly List:

Reference number: OT02001155  
Nominator: State  
Reason For Review:

☒ Accept      ☐ Return      ☐ Reject      11/9/2017 Date

Abstract/Summary Comments: Removed and Replaced with new bridge in 2014.

Recommendation/ Criteria Remove

Reviewer Edson Beall  Discipline Historian

Telephone \_\_\_\_\_ Date 11.9.17

DOCUMENTATION:      see attached comments : No      see attached SLR : No

If a nomination is returned to the nomination authority, the nomination is no longer under consideration by the National Park Service.

0202001155

**National Register of Historic Places  
Continuation Sheet**United States Department of the Interior  
National Park ServiceDotsero Bridge  
Eagle County, Colorado  
Bridges of Colorado MPSSection number 7 Page 1A

Additional Documentation for NRIS # 02001155

**REQUEST FOR REMOVAL**

The Dotsero Bridge (CDOT No. F-08-F), located along U.S. Highway I-70 Service Road, at milepost 133.51 in Dotsero, was listed in the National Register on October 15, 2002, under Criterion A for Transportation and under Criterion C for Engineering. It was linked to the *Highway Bridges in Colorado* Multiple Property Documentation Form (MPDF).

The steel rigid connected Parker through truss structure was constructed over the Colorado River in 1935 by Denver bridge builders A.S. Horner and C.A. Switzer. Designed by the Colorado Highway Department and fabricated by Midwest Steel & Iron Works, the 276' long bridge with a 150' main span was one of the few surviving examples of a once important long-span truss type bridge.

In 2011 the Colorado Department of Transportation (CDOT) found the bridge with a low sufficiency rating. Due to the deteriorated state, CDOT removed the bridge and built another bridge in its place by spring 2014.

As the bridge ceases to exist, the State Historic Preservation Office is initiating delisting from the National Register.

**Property Owner:**Colorado Department of Highways (CDOT)  
4201 E. Arkansas Avenue  
Denver, Colorado 80222**Prepared by:**History Colorado  
Office of Archaeology and Historic Preservation  
1200 Broadway  
Denver, CO 80203**Date:** June 2, 2017

Deputy State Historic Preservation Officer

15 September 2017

Signature of certifying official/ Title

Date

Office of Archaeology and Historic Preservation, History Colorado

State or Federal agency and bureau

# National Register of Historic Places Continuation Sheet

United States Department of the Interior  
National Park Service

Dotsero Bridge  
Eagle County, Colorado  
Highway Bridges in Colorado MPS

Section number 7 Page 2A

## Bibliography:

Colorado Department of Transportation website: [www.codot.gov/programs/BridgeEnterprise](http://www.codot.gov/programs/BridgeEnterprise)

Dotsero Bridge National Register nomination form, 2002.

Dotsero Bridge file 5EA.1604, Colorado Office of Archaeology and Historic Preservation, Project 61114.

## Historic Photos



Dotsero Bridge in 1998, from Dotsero Bridge National Register nomination 2002



Replacement bridge, September 2013 from  
[www.codot.gov/programs/BridgeEnterprise/Photos/I-70serviceoverColRiv.jpg](http://www.codot.gov/programs/BridgeEnterprise/Photos/I-70serviceoverColRiv.jpg)



United States Department of the Interior  
National Park Service

# National Register of Historic Places Registration Form



This form is for use in nominating or requesting determination for individual properties and districts. See instruction in *How to Complete the National Register of Historic Places Registration Form* (National Register Bulletin 16A). Complete each item by marking "x" in the appropriate box or by entering the information requested. If an item does not apply to the property being documented, enter "N/A" for "not applicable." For functions, architectural classification, materials and areas of significance, enter only categories and subcategories from the instructions. Place additional entries and narrative items on continuation sheets (NPS Form 10-900a). Use a typewriter, word processor, or computer, to complete all items.

## 1. Name of Property

historic name Dotsero Bridge

other names/site number CDOT No. F-08-F; 5EA1604

## 2. Location

street & number Interstate Highway 70 Service Road at milepost 133.51 [N/A] not for publication

city or town Dotsero [N/A] vicinity

state Colorado code CO county Eagle code 037 zip code \_\_\_\_\_

## 3. State/Federal Agency Certification

As the designated authority under the National Historic Preservation Act, as amended, I hereby certify that this [X] nomination [ ] request for determination of eligibility meets the documentation standards for registering properties in the National Register of Historic Places and meets the procedural and professional requirements set forth in 36 CFR Part 60. In my opinion, the property [X] meets [ ] does not meet the National Register criteria. I recommend that this property be considered significant [ ] nationally [ ] statewide [X] locally. ([ ] See continuation sheet for additional comments.)

Georgina Contegaglia  
Signature of certifying official/Title

State Historic Preservation Officer

August 21, 2002  
Date

State Historic Preservation Office, Colorado Historical Society  
State or Federal agency and bureau

In my opinion, the property [ ] meets [ ] does not meet the National Register criteria.  
([ ] See continuation sheet for additional comments.)

Signature of certifying official/Title

Date

State or Federal agency and bureau

## 4. National Park Service Certification

I hereby certify that the property is:

- [X] entered in the National Register  
[ ] See continuation sheet.  
[ ] determined eligible for the  
National Register  
[ ] See continuation sheet.  
[ ] determined not eligible for the  
National Register.  
[ ] removed from the  
National Register  
[ ] other, explain  
[ ] See continuation sheet.

Edson H. Beall  
Signature of the Keeper

10/13/02  
Date of Action

Dotsero Bridge  
Name of Property

Eagle County, Colorado  
County/State

## 5. Classification

### Ownership of Property

(Check as many boxes as apply)

- ☐ private  
☐ public-local  
☒ public-State  
☐ public-Federal

### Category of Property

(Check only one box)

- ☐ building(s)  
☐ district  
☐ site  
☒ structure  
☐ object

### Number of Resources within Property

(Do not count previously listed resources.)

Contributing

Noncontributing

0	0	buildings
0	0	sites
1	0	structures
0	0	objects
1	0	Total

### Name of related multiple property listing.

(Enter "N/A" if property is not part of a multiple property listing.)

Highway Bridges in Colorado

### Number of contributing resources previously listed in the National Register.

0

## 6. Function or Use

### Historic Function

(Enter categories from instructions)

Road-related

### Current Functions

(Enter categories from instructions)

Road-related

## 7. Description

### Architectural Classification

(Enter categories from instructions)

Other: Steel, rigid-connected Parker through truss

### Materials

(Enter categories from instructions)

foundation  
walls  
roof  
other Steel  
Concrete  
Asphalt

### Narrative Description

(Describe the historic and current condition of the property on one or more continuation sheets.)

**United States Department of the Interior**  
**National Park Service**

**National Register of Historic Places**  
**Continuation Sheet**

Section number 7 Page 1

Dotsero Bridge  
Eagle County, Colorado  
Highway Bridges in Colorado, MPS

**DESCRIPTION**

Location: Interstate Highway 70 Service Road at milepost 133.51 north of the Dotsero interchange

Setting: Over the Colorado River

Structure length: 276 feet  
Structure width: 33.50 feet  
Roadway width: 30 feet

Main span number: 1  
Approach span number: 2  
Main span length: 150 feet

Superstructure: Steel, rigid-connected Parker through truss  
Substructure: Concrete abutments, wingwalls and piers with angled cutwaters  
Floor/decking: Concrete deck with asphalt overlay  
Other features: Upper chord – 2 channels with cover plate and lacing  
Lower chord – 2 channels with batten plates  
Vertical and diagonal – wide flange  
Floor beams and stringers – steel I-beam  
Steel lattice guardrails with slotted concrete guardrails at approaches  
Colorado Highway Department bridgeplates

Erected: 1935  
Designer: Colorado Department of Highways  
Fabricator: Midwest Steel & Iron Works  
Contractor: A.S. Horner & C.A. Switzer

Alterations: None

Dotsero Bridge  
Name of Property

Eagle County, Colorado  
County/State

## 8. Statement of Significance

### Applicable National Register Criteria

(Mark "x" in one or more boxes for the criteria qualifying the property for National Register listing.)

- ☒ **A** Property is associated with events that have made a significant contribution to the broad patterns of our history.
- ☐ **B** Property is associated with the lives of persons significant in our past.
- ☒ **C** Property embodies the distinctive characteristics of a type, period, or method of construction or represents the work of a master, or possesses high artistic values, or represents a significant and distinguishable entity whose components lack individual distinction.
- ☐ **D** Property has yielded, or is likely to yield, information important in prehistory or history.

### Criteria Considerations

(Mark "x" in all the boxes that apply.)

Property is:

- ☐ **A** owned by a religious institution or used for religious purposes.
- ☐ **B** removed from its original location.
- ☐ **C** a birthplace or grave.
- ☐ **D** a cemetery.
- ☐ **E** a reconstructed building, object, or structure.
- ☐ **F** a commemorative property.
- ☐ **G** less than 50 years of age or achieved significance within the past 50 years.

### Narrative Statement of Significance

(Explain the significance of the property on one or more continuation sheets.)

## 9. Major Bibliographical References

### Bibliography

(Cite the books, articles and other sources used in preparing this form on one or more continuation sheets.)

### Previous documentation on file (NPS):

- ☐ preliminary determination of individual listing (36 CFR 67) has been requested
- ☐ previously listed in the National Register
- ☐ previously determined eligible by the National Register
- ☐ designated a National Historic Landmark
- ☐ recorded by Historic American Buildings Survey
- # \_\_\_\_\_
- ☐ recorded by Historic American Engineering Record
- # \_\_\_\_\_

### Areas of Significance

(Enter categories from instructions)

Transportation

Engineering

### Periods of Significance

1935-1952

### Significant Dates

N/A

### Significant Person(s)

(Complete if Criterion B is marked above.)

N/A

### Cultural Affiliation

N/A

### Architect/Builder

Colorado Department of Highways

Midwest Steel & Iron Works

Horner, A.S. & Switzer, C.A.

### Primary location of additional data:

- ☒ State Historic Preservation Office
- ☐ Other State Agency
- ☐ Federal Agency
- ☐ Local Government
- ☐ University
- ☐ Other

Name of repository:

Colorado Historical Society

Colorado Dept. of Transportation



United States Department of the Interior  
National Park Service

National Register of Historic Places  
Continuation Sheet

Dotsero Bridge  
Eagle County, Colorado  
Highway Bridges in Colorado, MPS

Section number 8 Page 2

## SIGNIFICANCE

The 1935 Dotsero Bridge on the Interstate Highway 70 Service Road, over the Colorado River north of the Dotsero interchange, meets the registration requirements under Criterion A in the area of Transportation and under Criterion C in the area of Engineering as set forth in the *Highway Bridges in Colorado*, Multiple Property Documentation Form. The period of significance begins in 1935 with the completion of the bridge and extends through its historic use to 1952, a date fifty-years-of-age in keeping with National Register criteria.

Over its lengthy existence, the Eagle River Road has functioned in a variety of capacities: as a private toll road, county road, Denver-Grand Junction Road, State Primary Road No. 10, State Highway 4, U.S. Highway 40 South, and U.S. Highway 6. As one of the two primary routes through Colorado's central Rocky Mountains, it served as a pivotal link between Colorado's Front Range and the Western Slope.

The state legislature recognized the value of this link in 1899 when it designated the route the Denver-Grand Junction Road. Later the Midland Trail Association reinforced its importance by including it as part of a transcontinental route. When the Colorado Highway Department (CHD) upgraded the highway in the 1930s, it further bolstered the road's importance. As a pivotal part of this latter endeavor, the Dotsero Bridge is significant for its contribution to Colorado transportation.

CHD awarded the construction contract for this bridge and adjacent highway to Denver contractors A.S. Horner and C.A. Switzer. Using a steel superstructure fabricated in Denver by the Midwest Steel & Iron Works, the contractors erected the bridge in 1935 for a cost of \$46,107. Highway 6/40S carried increasingly heavy traffic between Denver and Grand Junction for 25 years before CHD began planning for its replacement. In 1959, CHD engaged the E. Lionel Pavlo Engineering Company of New York to reconnoiter the best route for an interstate freeway west from Denver through the mountains. Pavlo's report, issued in April 1960, covered the 100-mile route between Dotsero and Empire Junction, focusing on a shorter route between Wolcott and Empire that would involve construction of a major tunnel beneath the continental divide. Construction on I-70 through the mountains followed in the 1960s and 1970s, culminating with the completion of the Vail Pass segment and the second bore of the Eisenhower Tunnel in 1979. Now on a frontage road for I-70, the Dotsero Bridge continues to carry vehicular traffic in essentially unaltered condition.

## Engineering

The Dotsero Bridge is technologically noteworthy as an intact example of CHD standard truss design. The highway department erected numerous Parker trusses from 1922 to 1945 at highway river crossings throughout the state, ranging in span length from 125 feet to 200 feet.



**United States Department of the Interior  
National Park Service**

**National Register of Historic Places  
Continuation Sheet**

Section number 9 Page 3

Dotsero Bridge  
Eagle County, Colorado  
Highway Bridges in Colorado, MPS

Attrition of these long span bridges has been severe, and only eight Parker through trusses remain in place on Colorado's highways. In essentially unaltered condition, the Dotsero Bridge remains as one of the few surviving examples of what was once a mainstay structural type.

In the early 1930s, when CHD began planning a major reconstruction of the highway through Eagle County the project involved construction of a variety of flumes, guard fences, wire fences, box and pipe culverts and a steel truss over the Colorado River to replace the 1900 Dotsero Bridge. For the new bridge, CHD delineated a rigid-connected Parker through truss that extended 150 feet between the bearing pins and carried a 30-foot-wide roadway and was flanked on each end by a steel stringer span. The truss was subdivided into eight 18 foot 9 inch panels, the tallest of which stood 25 feet 10 inches from chord to chord. The upper chords and inclined endposts consisted of two back-to-back 12 inch steel channels, covered by a continuous 3/8 inch steel plate on top joined by bar lacing underneath. The verticals were 10 inch wide flanges, as were the diagonals in the outermost panels.

The interior panel diagonals consisted of two 3x4 inch angles with batten plates. These were braced laterally by a laced two angle member that extended horizontally across the central four panels. The lower chords were made up of two back-to-back 12 inch channels with batten plates. All of these web members were field riveted using 3/8 inch steel gusset plates. The truss was simply supported on its four corners by heavy cast steel bearing shoes, fixed on one end and rocking on the other, which were anchor bolted to reinforced concrete piers.

To brace the two webs laterally, overhead struts extended 16 feet above the roadway at the panel points. The interior struts consisted of two back-to-back pairs of 3x5-inch angles, joined by bar lacing and braced underneath by latticed panels. The portal struts were heavily gusseted, steel angle lattices, with the lower chords angled downward toward the endposts to form integral kneebraces. Wide flange floor beams, 27 inches deep, were riveted to the verticals at the panel points; these supported six lines of 16 inch wide flange stringers, on which the concrete slab deck rested. This deck was flanked on each side by an integrally poured concrete curb and steel lattice guardrail with steel plate hub rail on the truss and CHD standard slotted concrete guardrails at the approaches. Concrete bulkheads with recessed rectangular panels framed the guardrails at both ends. The truss carried standard CHD bronze bridge plates on its bulkheads and cast iron plates on its endposts.

United States Department of the Interior  
National Park Service

National Register of Historic Places  
Continuation Sheet

Section number 9 Page 4

Dotsero Bridge  
Eagle County, Colorado  
Highway Bridges in Colorado, MPS

BIBLIOGRAPHY

Bartlett, F.L. "The History of Road Building in Colorado." *Colorado Highways* 5:3, March 1926.

Beebe, Lucius M., and Clegg, Charles. *Hear the Train Blow*. New York: E.P. Dutton & Company, 1952.

Colorado Department of Transportation, Structure Inventory and Appraisal: Structure No. F-08-F. Located at CDOT, Denver, CO.

Colorado Highway Department. Bridge Kardex File. Located at CDOT Bridge Division, Denver, CO.

Colorado State Highway Commission. Proceedings. Located at Colorado Department of Transportation Archives, Denver, CO.

Eagle County Commissioners' Record. Located at Eagle County Clerk's Office, Eagle, CO.

*Eleventh Biennial Report of the State Engineer to the Governor of Colorado 1901-1902*. Denver: Smith-Brooks Printing Company, 1902.

*Fifteenth Biennial Report of the State Engineer to the Governor of Colorado 1909-1910*. Denver: Smith-Brooks Printing Company, 1911.

*Fourteenth Biennial Report of the State Engineer to the Governor of Colorado 1907-1908*. Denver: Smith-Brooks Printing Co., 1909.

*Fourth Biennial Report of the State Highway Commission*. Denver: Smith-Brooks Printing Company, 1917.

Fraser, Clayton B. Field inspection September 1998.

Fraser, Clayton B. "Dotsero Bridge, 5EA1604," Historic Bridge Inventory, 31 March 2000.

Griswold, Wesley S. *A Work of Giants: Building the First Transcontinental Railroad*. New York: McGraw-Hill Book Company, 1962.

Hokanson, Drake. *The Lincoln Highway: Main Street Across America*. Iowa City: University of Iowa Press, 1988.

"Improved Roads Help Farmers." *Colorado Highways* 1:4, July 1922.

**United States Department of the Interior**  
**National Park Service**

**National Register of Historic Places**  
**Continuation Sheet**

Dotsero Bridge  
Eagle County, Colorado  
Highway Bridges in Colorado, MPS

Section number 9 Page 5

---

Keck, C.M. "The Midland Highway." *Colorado Highways* 3:9, March 1924.

Means, John S. "Road Construction of Different Types During Recent Years." *Colorado Highways* 1:6, September 1922.

Ormes, Robert M. *Railroads and the Rockies*. Denver: Sage Books, 1963.

*Second Biennial Report of the State Highway Commission*. Denver: Smith-Brooks Printing Company, 1912.

*Tenth Biennial Report of the State Engineer to the Governor of Colorado 1899-1900*. Denver: Smith-Brooks Printing Company, 1901.

Waddell, J.A.L. *Bridge Engineering*. New York: John Wiley and Sons, 1916.

Wiley, Marion C. *The High Road*. Denver: Colorado Highway Department 1976.



Dotsero Bridge  
Name of Property

Eagle County, Colorado  
County/State

## 10. Geographical Data

Acreage of Property less than one

### UTM References

(Place additional UTM references on a continuation sheet.)

1. 13 323980 4390640  
Zone Easting Northing

2. Zone Easting Northing

3. Zone Easting Northing

4. Zone Easting Northing

[ ] See continuation sheet

### Verbal Boundary Description

(Describe the boundaries of the property on a continuation sheet.)

### Boundary Justification

(Explain why the boundaries were selected on a continuation sheet.)

## 11. Form Prepared By

name/title Office of Archaeology and Historic Preservation and Clay Fraser, principal  
organization Colorado Historical Society and Fraser Design date May 21, 2002  
street & number 1300 Broadway telephone 303-866-4681  
city or town Denver state CO zip code 80203

## Additional Documentation

Submit the following items with the completed form:

### Continuation Sheets

### Maps

A **USGS map** (7.5 or 15 minute series) indicating the property's location.

A **Sketch map** for historic districts and properties having large acreage or numerous resources.

### Photographs

Representative **black and white photographs** of the property.

### Additional Items

(Check with the SHPO or FPO for any additional items)

## Property Owner

(Complete this item at the request of SHPO or FPO.)

name Colorado Department of Transportation  
street & number 4201 E. Arkansas Avenue telephone \_\_\_\_\_  
city or town Denver state CO zip code 80222

**Paperwork Reduction Act Statement:** This information is being collected for applications to the National Register of Historic Places to nominate properties for listing or determine eligibility for listing, to list properties, and to amend existing listings. Response to this request is required to obtain a benefit in accordance with the National Historic Preservation Act, as amended (16 U.S.C. 470 et seq.).

Dotsero Bridge  
Eagle County, Colorado  
Highway Bridges in Colorado, MPS

Section number 10 Page 6

- 1 Overview to north with approach spans
- 2 View to northwest through bridge
- 3 View to west of underside
- 4 View to southwest of roadway

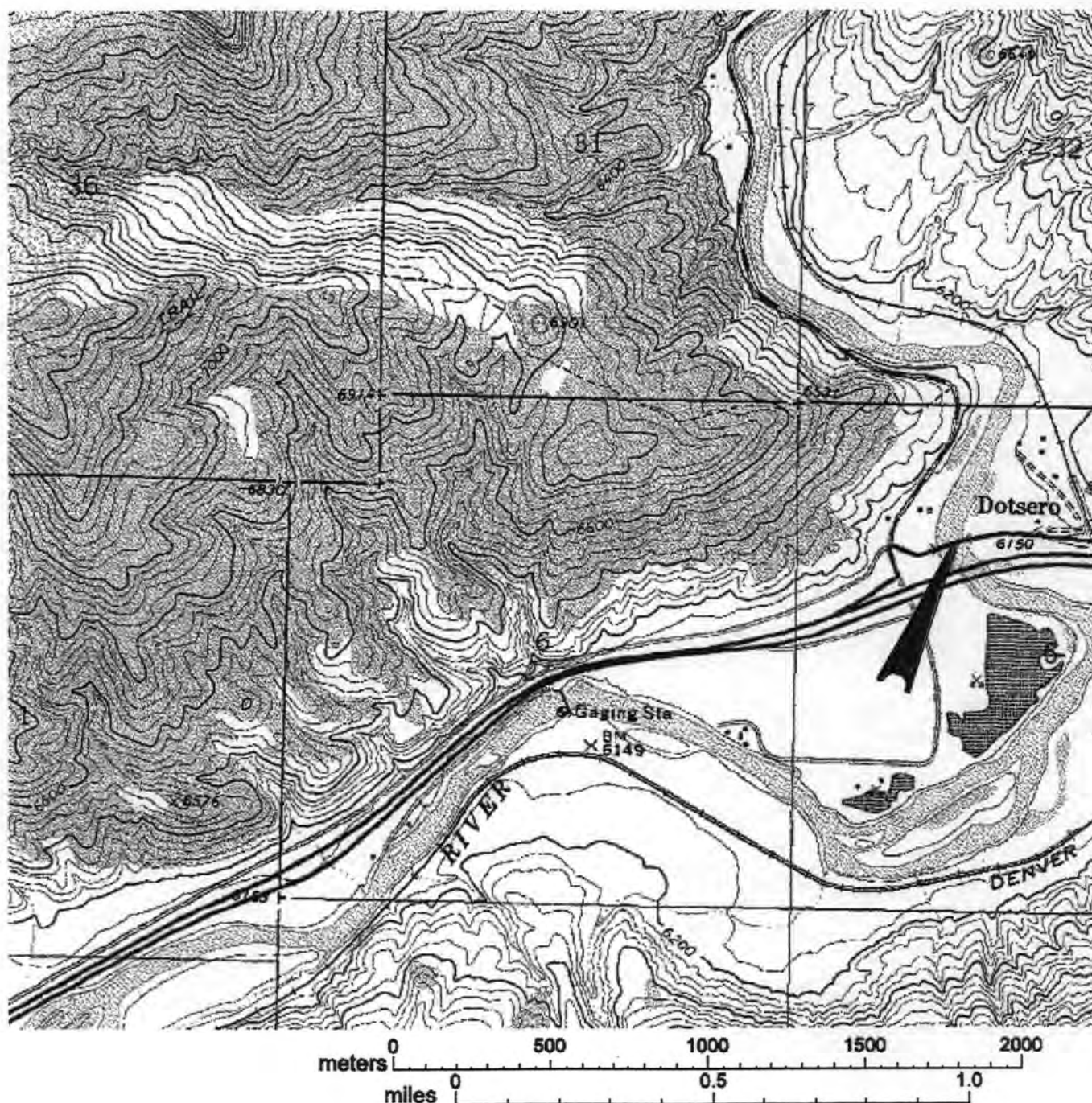
United States Department of the Interior  
National Park Service

National Register of Historic Places  
Continuation Sheet

Section number \_\_\_\_ Page 7

Dotsero Bridge  
Eagle County, Colorado  
Highway Bridges in Colorado, MPS

USGS TOPOGRAPHIC MAP  
Dotsero Quadrangle, Colorado  
7.5 Minute Series







Bridge  
Eagle County, CO

①





Dotsero Bridge  
Eagle County, CO



Dotsero Bridge  
Eagle County, CO

(3)



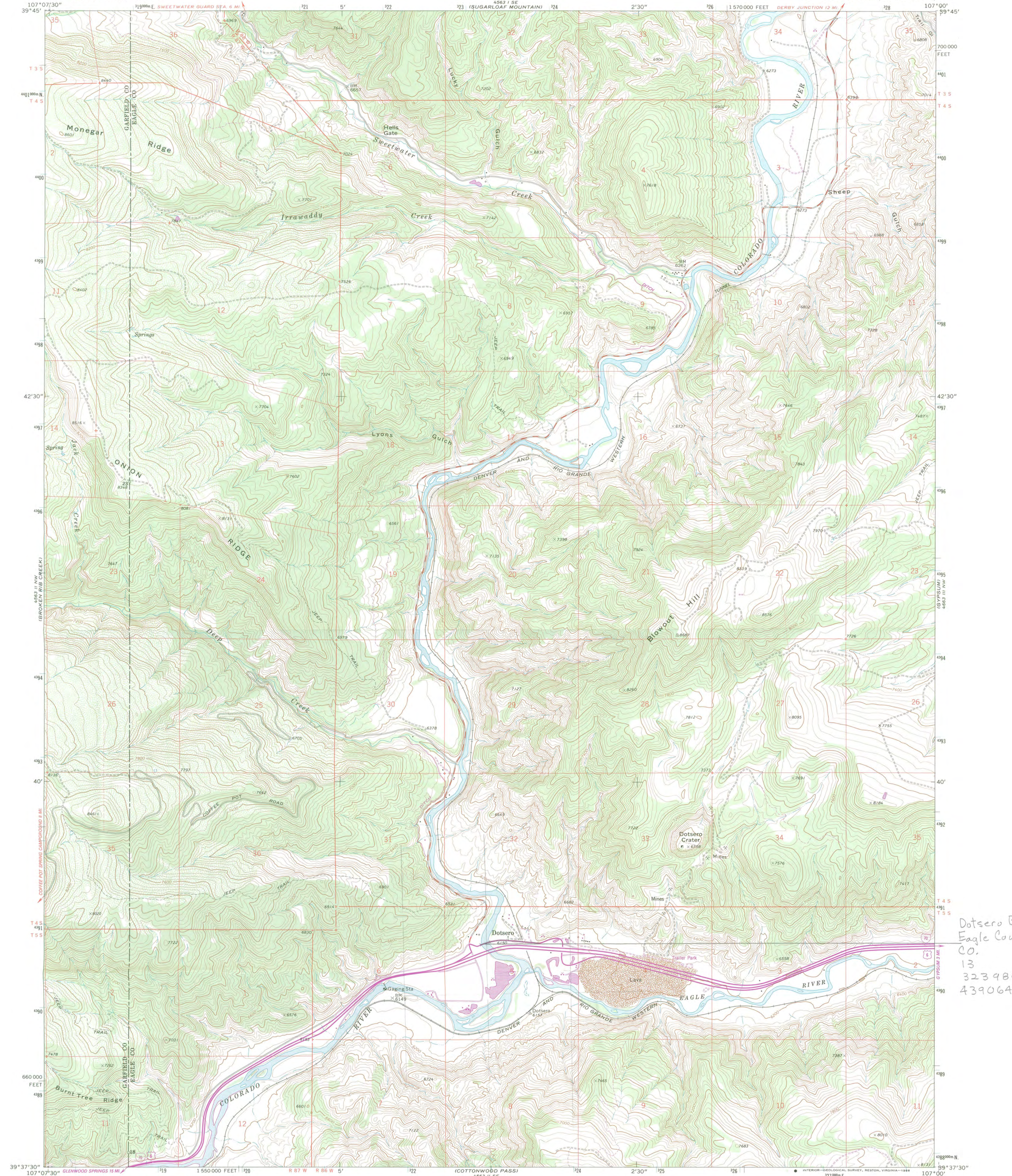


Dotsero Bridge  
Eagle County, CO

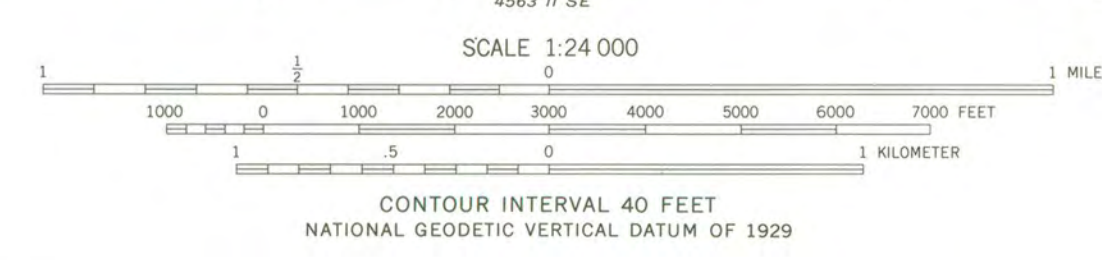
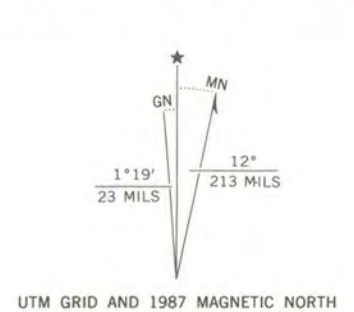


UNITED STATES  
DEPARTMENT OF THE INTERIOR  
GEOLOGICAL SURVEY

DOTSERO QUADRANGLE  
COLORADO  
7.5 MINUTE SERIES (TOPOGRAPHIC)



Mapped, edited, and published by the Geological Survey  
Control by USGS, NOS/NOAA and U. S. Forest Service  
Topography by photogrammetric methods from aerial  
photographs taken 1964-65. Field checked 1974  
Projection and 10,000-foot grid ticks: Colorado  
coordinate system, central zone (Lambert conformal conic)  
1000-meter Universal Transverse Mercator grid ticks,  
zone 13, shown in blue. 1927 North American Datum  
Fine red dashed lines indicate selected fence lines  
To place on the predicted North American Datum 1983  
move the projection lines 6 meters north and  
53 meters east as shown by dashed corner ticks  
Revisions shown in purple and woodland compiled from  
aerial photographs taken 1983 and other source data.  
This information not field checked. Map edited 1987



ROAD CLASSIFICATION	
Primary highway, hard surface	Light-duty road, hard or improved surface
Secondary highway, hard surface	Unimproved road
Interstate Route	U. S. Route
	State Route

DOTSERO, COLO.  
39107-F1-TF-024  
1974  
PHOTOREVISED 1987  
DMA 4563 II NE-SERIES V877



# National Register of Historic Places

## Note to the record

Additional Documentation: 2003

United States Department of the Interior  
National Park Service

National Register of Historic Places  
Continuation Sheet

02001155

Dotsero Bridge  
Eagle County/ Colorado  
Highway Bridges in Colorado MPS

Section number 10 Page 1

This additional documentation corrects an erroneous UTM reference contained in the original nomination. The boundary justification remains unchanged.

UTM References

1.	13	322980	4390660
	Zone	Easting	Northing

As the designated authority under the National Historic Preservation Act, as amended, I hereby certify that this [X] nomination [ ] request for determination of eligibility meets the documentation standards for registering properties in the National Register of Historic Places and meets the procedural and professional requirements set forth in 36 CFR Part 60. In my opinion, the property [X] meets [ ] does not meet the National Register criteria. I recommend that this property be considered significant [ ] nationally [ ] statewide [X] locally. ([ ] See continuation sheet for additional comments.)

Georgina Cortez Deputy State Historic Preservation Officer April 19 2003  
Signature of certifying official/Title Date

Office of Archaeology and Historic Preservation, Colorado Historical Society  
State or Federal agency and bureau

In my opinion, the property [ ] meets [ ] does not meet the National Register criteria.  
([ ] See continuation sheet for additional comments.)

\_\_\_\_\_  
Signature of certifying official/Title Date

\_\_\_\_\_  
State or Federal agency and bureau



UNITED STATES DEPARTMENT OF THE INTERIOR  
NATIONAL PARK SERVICE

NATIONAL REGISTER OF HISTORIC PLACES  
EVALUATION/RETURN SHEET

REQUESTED ACTION: ADDITIONAL DOCUMENTATION

PROPERTY Dotsero Bridge  
NAME:

MULTIPLE Highway Bridges in Colorado MPS  
NAME:

STATE & COUNTY: COLORADO, Eagle

DATE RECEIVED: 5/07/03 DATE OF PENDING LIST:  
DATE OF 16TH DAY: DATE OF 45TH DAY: 6/21/03  
DATE OF WEEKLY LIST:

REFERENCE NUMBER: 02001155

REASONS FOR REVIEW:

APPEAL: N DATA PROBLEM: N LANDSCAPE: N LESS THAN 50 YEARS: N  
OTHER: N PDIL: N PERIOD: N PROGRAM UNAPPROVED: N  
REQUEST: N SAMPLE: N SLR DRAFT: N NATIONAL: N

COMMENT WAIVER: N

☒ ACCEPT ☐ RETURN ☐ REJECT ☐ DATE

ABSTRACT/SUMMARY COMMENTS:

*Additional Documentation Accepted*

RECOM./CRITERIA

REVIEWER

*Edson Ball*

DISCIPLINE

*Historian*

TELEPHONE

DATE

*6/20/03*

DOCUMENTATION see attached comments Y/N see attached SLR Y/N

National Register of Historic Places  
Memo to File

# Correspondence

The Correspondence consists of communications from (and possibly to) the nominating authority, notes from the staff of the National Register of Historic Places, and/or other material the National Register of Historic Places received associated with the property.

Correspondence may also include information from other sources, drafts of the nomination, letters of support or objection, memorandums, and ephemera which document the efforts to recognize the property.

UNITED STATES DEPARTMENT OF THE INTERIOR  
NATIONAL PARK SERVICE

NATIONAL REGISTER OF HISTORIC PLACES  
EVALUATION/RETURN SHEET

REQUESTED ACTION: NOMINATION

PROPERTY Dotsero Bridge  
NAME:

MULTIPLE Highway Bridges in Colorado MPS  
NAME:

STATE & COUNTY: COLORADO, Eagle

DATE RECEIVED: 9/06/02 DATE OF PENDING LIST:  
DATE OF 16TH DAY: DATE OF 45TH DAY: 10/21/02  
DATE OF WEEKLY LIST:

REFERENCE NUMBER: 02001155

REASONS FOR REVIEW:

APPEAL: N DATA PROBLEM: N LANDSCAPE: N LESS THAN 50 YEARS: N  
OTHER: N PDIL: N PERIOD: N PROGRAM UNAPPROVED: N  
REQUEST: N SAMPLE: N SLR DRAFT: N NATIONAL: N

COMMENT WAIVER: N

☒ ACCEPT ☐ RETURN ☐ REJECT 10/15/02 DATE

ABSTRACT/SUMMARY COMMENTS:

*Entered in the  
National Register*

RECOM./CRITERIA \_\_\_\_\_

REVIEWER \_\_\_\_\_ DISCIPLINE \_\_\_\_\_

TELEPHONE \_\_\_\_\_ DATE \_\_\_\_\_

DOCUMENTATION see attached comments Y/N see attached SLR Y/N

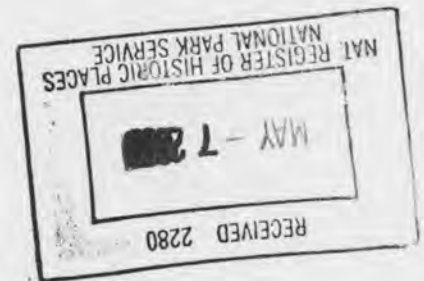
# COLORADO HISTORICAL SOCIETY



Colorado History Museum 1300 Broadway Denver Colorado 80203-2137

April 29, 2003

Ms. Carol D. Shull, Keeper of the National Register  
National Register of Historic Places  
National Park Service  
1201 Eye Street, N.W. 8th Floor  
Washington, D.C. 20005



RE: National Register Nomination Amendments

<sup>02001150</sup>  
Dolores River Bridge (Highway Bridges in Colorado MPS)  
Montrose County, Colorado

Colorado River Bridge (Highway Bridges in Colorado MPS)  
Mesa County <sup>02001154</sup>

Dotsero Bridge (Highway Bridges in Colorado MPS)  
Eagle County, Colorado <sup>02001155</sup>

North St. Vrain Bridge (Highway Bridges in Colorado MPS)  
Boulder County, Colorado <sup>02001159</sup>

Dear Ms. Shull:

We are pleased to submit for your approval the nomination amendments for the above listed bridges that were part of the Highway Bridges in Colorado MPS. Though the locations indicated on the USGS maps were correct, the UTM calculations were incorrect and these continuation pages address those incorrect UTMs.

The amendments were approved by the State Historic Preservation Officer and have been forwarded onto Washington for your approval.

We look forward to receiving the approval of these amendments. If you have any questions, please do not hesitate to contact Dale Heckendorn, National Register Coordinator, at 303-866-4681.

Sincerely,

Chris Geddes  
National and State Register Historian

Enclosures

## OFFICE OF ARCHAEOLOGY AND HISTORIC PRESERVATION

*The Office of Archaeology and Historic Preservation assists individuals, communities, and organizations to identify, protect, and preserve the State's cultural resources and to foster widespread appreciation of and respect for Colorado's cultural heritage.*

303-866-3392 • Fax: 303-866-2711 • E-mail: oahp@chs.state.co.us • Web Site: www.coloradohistory.org



OFFICE of ARCHAEOLOGY and HISTORIC PRESERVATION

September 22, 2017



J. Paul Loether, Deputy Keeper and Chief,  
National Register and NHL Programs  
National Register of Historic Places  
1201 Eye St. NW, 8th Fl.  
Washington D.C. 20005

Re: Removal of National Register designation for the Dotsero Bridge (CDOT No. F-08-F),  
Dotsero, Eagle County, Colorado (NRIS.02001155; 5EA.1604)

Dear Mr. Loether:

The above referenced bridge was listed in the National Register October 15, 2002. Unfortunately, the bridge was removed and replaced with a new bridge in 2014. The office of the Colorado State Historic Preservation Officer recently learned of the bridge's status and is now pursuing removal of the site from the National Register.

We therefore submit for your review the following:

- CD with National Register of Historic Places Continuation Sheet for removal of the Dotsero Bridge (there are no current TIF images of the bridge)  
Note: **The enclosed disk contains the true and correct copy of the Continuation Sheets (Additional Documentation) for the removal of the Dotsero Bridge from the National Register of Historic Places.**
- Physical signature page to the Continuation Sheet request for removal

The State Review Board reviewed the nomination removal at its meeting on September 15, 2017. The board voted unanimously to recommend to the State Historic Preservation Officer that the Additional Documentation met the criteria for removal in the National Register.

If you have any questions, feel free to contact me at 303- 866-4684 or at [heather.peterson@state.co.us](mailto:heather.peterson@state.co.us)

Best regards,

Heather Peterson  
National & State Register Historian

Enclosures as above noted