

LAND SALE EXTRAORDINARY

Historic Farm on Dixie Highway, One-half mile from Elizabethtown, Ky., containing 375 acres, formerly

GOV. HELM ESTATE

AT AUCTION

FRIDAY, DECEMBER 12TH, 1919

10:00 A. M.

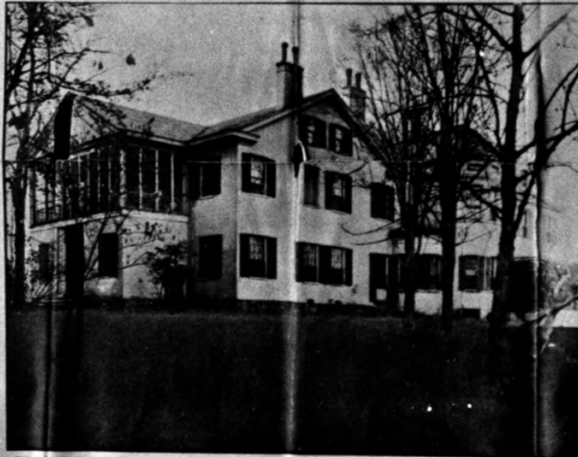
This splendid farm, for many years the proud possession of the Helm family, nursed and beautified by our distinguished former chief executive, who, besides preserving and increasing the fertility of the soil, designed and constructed the splendid gravel driveways throughout this beautiful suburban estate, including the artistic circular drive in front of the magnificent residence, on either side of which was planted a border of pines and holly interwoven with a choice selection of shrubbery, well deserving, as it passed from father to son, the appropriate appellation:

"One of the Show Places of Kentucky"

Location Means Much

Situated on the famous Dixie Highway, I. & N. and I. C. Railroads, within the shadow of the rapidly growing city of Elizabethtown, close to a splendid school, close to churches, close to market, with best of improvements, running water and electric lights, this, the Gov. Helm Farm, stands distinctly alone—without a peer—without a rival in Hardin County.

Ladies always welcome,
and on this occasion
are especially
invited



This substantial residence, with richly decorated interior, is surrounded by great forest trees and sets on a commanding land overlooking Elizabethtown. It has city conveniences, including water and electric lights, electric current being furnished by the city. A real home for the most discriminating. Now open for your inspection.

Buy a Farm With a Reputation

This land is especially adapted to the growing of tobacco, corn, wheat, oats, clover, blue grass, and alfalfa. It is abundantly watered by never-failing springs. Has been operated principally as a stock farm, for which it is well equipped, with running water and electric lights in the barns. Was handed down by the Governor to his son, John Helm, who preserved its attractiveness and its fertility. Next and still fortunate, for seven years it was owned and cared for by that illustrious citizen, Mr. Taylor Watkins, who less than one year ago transferred it to M. H. Gabbert and others. All being men of means the farm has never had to "pay for itself." It is said by those who know it best that there is no better farm and no better improvements to be found in the county. It stands today preserved and unabused, ready to reward whoever on December 12 may prove its fortunate purchaser.

This farm will first be sold in separate tracts, then as a whole, the highest price prevailing

Tract No. 1. About 200 acres; includes in addition to the residence shown in cut, two tenant houses, two barns with electric lights and running water. One splendid feed barn, with silo and with a capacity for 100 feeders. A splendid garage, accommodating three automobiles, two corn cribs, tool house, wagon shed, and other out-buildings.

Tract No. 2. About 70 acres, has never-failing spring water, is located close to Elizabethtown, extending almost to corporate limits. Has a splendid residence and private road to town. This tract so easy of access is well suited to anyone living in town desiring to farm. In the event purchaser should not wish to farm it himself, its proximity to town will insure a ready and desirable tenant.

THIS ENTIRE FARM is level to slightly rolling, each field suitable to use of tractor. We cannot recall of ever having offered at public auction a like combination of improvements, quality of soil, and location as we offer on this occasion. Think it over. Modern conveniences, running water, electric lights in both residence and barns. On two railroads and Dixie Highway. Be satisfied with none but the best.

Auctioneers of national reputation, including your own invincible Col. H. I. Iglehart, have been assigned to this sale. Come out and hear them.

Free Lunch at Noon.

Railroad fares refunded to out-of-town purchasers within radius of 200 miles

Liberal Terms will be Announced at Opening of Sale

Persons desiring to look over the property, may either call on one of our representatives at Smith Hotel, Elizabethtown, or at our Home Office, 1919-2021 South Bldg., Louisville, Ky. Our automobiles are at your disposal from now until sale is over.

Tract No. 3. 85 acres more or less; has a good residence, never-failing spring water, a long frontage on Dixie Highway. Plenty of good tobacco land ready for the plow. A sure money-maker and a ready seller should purchaser ever desire to make a change. Don't fail to inspect this one.

Tracts No. 4 and 5. Contain about ten acres each fronting for suburban homes, each has a commanding residence site where one may have advantage of both town and country life, with garden and chicken raising features that would take all the terror out of the high cost of living, and within easy reach of the most modest investor.

LIVE STOCK, IMPLEMENTS, HARNESS AND TOOLS. Two pair of good work mules, one team of horses, one yearling colt, four milk cows, two McCormick wheat binders (one has cut only 50 acres of grain), one corn binder, one tobacco setter, two manure spreaders, two mowing machines, two Superior wheat drills, each good as new, one hay rake, one alfalfa seeder, one Fordson tractor and gang plow, same as new, numerous cultivators, walking plows, harrows, two splendid farm wagons, all kinds of small tools, farm harness, and tobacco sticks, in short every article that goes with a large, well equipped producing farm. Something for everybody. DON'T FAIL TO BE PRESENT.

PLEASE REMEMBER. This is a genuine sale. We have no other kind. We win or we lose on December 12. We sell no lands privately, but do an exclusive auction business. No set price, no reserve, no puffing or by-bidding, no private sale. This has been our motto for the entire ten years we have been in business, during which period we have operated from the Great Lakes to the Gulf, and have never anywhere or at any time failed or refused to sell a piece of property of any kind after it was once placed under the hammer. You make the price. We make the deed. You owe it to yourself to attend every sale of this kind, so as to take advantage of whatever sacrifice we may have to make.

Louisville Real Estate & Development Company, D. C. CLARKE
Manager

Helm Place, Elizabethtown, Kentucky
Royal Photo Company, Louisville
Kentucky, now in possession of Mrs.
Paul Marion.

Photo 1.

1912

Hardin Co.

Notice of **auction** of property to be
held on December 12, 1919, with
view of house from southeast.

OCT 7 1976



Helm Place
Elizabethtown
Hardin County
Kentucky

OCT 7 1976

From photo by Royal Photo Co.,
Louisville, Kentucky, now in
possession of Mrs. Paul Marion.
1912

Photo 2. Old view of the entrance to
the estate, probably looking east off
the Louisville Road (now strip-
developed).

NOV 9 1976



ROYAL
PHOTO CO
MILWAUKEE

Helm Place
Elizabethtown
Hardin County
Kentucky

OCT 7 1976

From photo by Royal Photo Co.,
Louisville, Kentucky, now in
possession of Mrs. Paul Marion.

1912

Photo 3. Old view looking north up
main driveway with entrance portico
of house in distance.

NOV 9 1976



ROYAL PHOTO CO.
LONG BEACH, CALIF.

Helm Place
Elizabethtown
Hardin County
Kentucky

OCT 7 1976

From photo by Royal Photo Co.,
Louisville, Kentucky, now in
possession of Mrs. Paul Marion.

1912

Photo 4. Old view of south facade
of house showing original entrance
feature with "tack rooms" flanking
recessed vestibule. Note stone
steps and view through center hall.

NOV 9 1976



Helm Place
Elizabethtown
Hardin County
Kentucky

OCT 7 1976

Source unknown.
Ca. 1938.

Photo 5. Old view of south facade
of house during period of neglect.

NOV 9 1976



ROYAL PHOTO

Helm Place
Elizabethtown
Hardin County
Kentucky

OCT 7 1976

From photo by Royal Photo Co.,
Louisville, Kentucky, now in
possession of Mrs. Paul Marion.
1912

Photo 6. Old view of house from
southeast showing east side with
Victorian additions at right.

NOV 9 1976



Helm Place
Elizabethtown
Hardin County
Kentucky

OCT 7 1976

Source unknown.
Ca. 1938.

Photo 7. Old view of east side of house during period of neglect showing Victorian additions: dining-room bay window, 2 1/2-story, and additional porches on ell.



ROYAL PHOTO CO
LANSING, KY.

Helm Place
Elizabethtown
Hardin County
Kentucky

OCT 7 1976

From photo by Royal Photo Co.,
Louisville, Kentucky, now in
possession of Mrs. Paul Marion.
1912

Photo 8. Old view of house from
west showing late 19th-century sleep-
ing porches between main block of
house (at right) and rear ell.

Note outbuildings and small porch
at far left.

NOV 9 1976



Helm Place
Elizabethtown
Hardin County
Kentucky

OCT 7 1976

From photo by Royal Photo Co.,
Louisville, Kentucky, now in
possession of Mrs. Paul Marion.
1912

Photo 9. Old view of double parlors
on west side of house looking south
from rear parlor into front parlor
and "tackroom" beyond at left.

Mantel shown was probably added
at the turn-of-the-century;
chandeliers (no longer in House)
from the 1850s. Greek Revival
woodwork original.

9 1976



Helm Place
Elizabethtown
Hardin County
Kentucky

OCT 7 1976

From photo by Royal Photo Co.,
Louisville, Kentucky, now in
possession of Mrs. Paul Marion.
1912

Photo 10. Old view of library on
east side of house looking north into
diningroom, mantel added at turn-
of-century. In this room John

Larue Helm, Sr., is said to have
been inagurated as governor for the
second time, on his deathbed.

NOV 9 1976



Royal Photo Co.
188
Louis Ky.

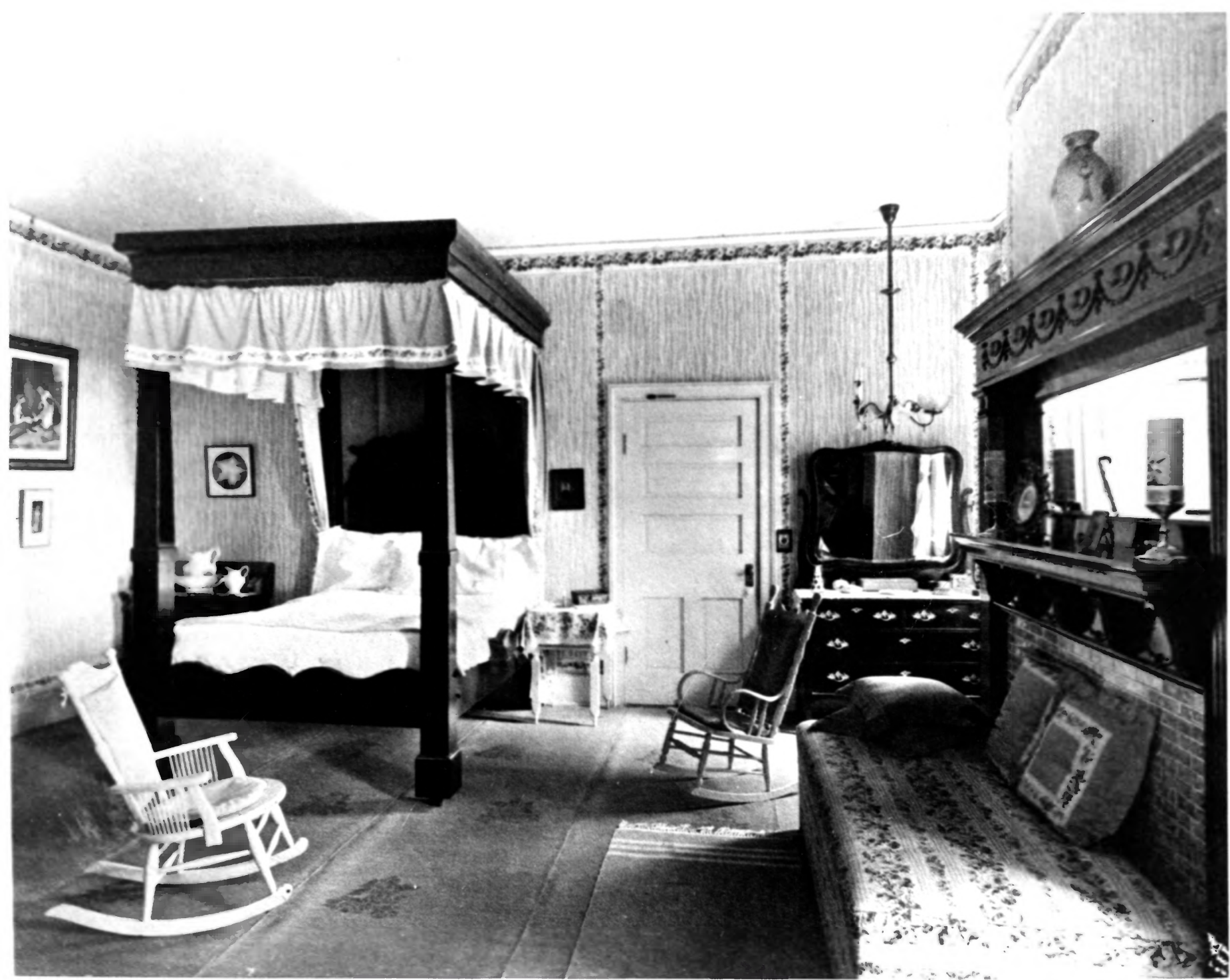
Helm Place
Elizabethtown
Hardin County
Kentucky

OCT 7 1976

From photo by Royal Photo Co.,
Louisville, Kentucky, now in
possession of Mrs. Paul Marion.
1912

Photo 11. Old view of diningroom
in northeast corner of main block,
looking north. Note distinctive
five-panel doors leading to service
wing. Victorian bay window is
glimpsed at right. Eaves at edge of
ceiling are not original.

NOV 9 1976



Helm Place
Elizabethtown
Hardin County
Kentucky

OCT 7 1976

From photo by Royal Photo Co.,
Louisville, Kentucky, now in
possession of Mrs. Paul Marion.
1912

Photo 12. Old view of upstairs
bedroom (probably northwest ~~over~~
rear parlor, looking southwest)
showing original closet door and
mantel that may be original late
Federal style (with new tile facing).

NOV 8 1976



Helm Place
Elizabethtown
Hardin County
Kentucky

OCT 7 1976

From photo by Royal Photo Co.,
Louisville, Kentucky, now in
possession of Mrs. Paul Marion.
1912

Photo 13. Old view of bedroom
(probably northeast over dining-
room, looking north toward service
wing). Mantel is turn-of-century.

NOV 9 1976



Helm Place
Elizabethtown
Hardin County
Kentucky

OCT 7 1976

From photo by Royal Photo Co.,
Louisville, Kentucky, now in
possession of Mrs. Paul Marion.
1912

Photo 14. Old view of bedroom
(probably in upper part of late 19th-
century tower just north of main
block, looking east). Note interior
shutters.

NOV 9 1976



Helm Place
Elizabethtown
Hardin County
Kentucky

OCT 7 1976

Larry Brawner
June 1976
Elizabethtown, Kentucky

Photo 15. View of south facade of house with present portico. Main entrance is original, although bevelled glass dates from ca. 1900.

It is also possible that the foundations and pediment (except the oculus) are original.

NOV 9 1976



Helm Place
Elizabethtown
Hardin County
Kentucky

OCT 7 1976

Larry Brawner
June 1976
Elizabethtown, Kentucky

Photo 16. View from northwest showing original west side of house, wooden porches at rear of main block. (Modern swimming pool in foreground.)

NOV 9 1976



Helm Place
Elizabethtown
Hardin County
Kentucky

OCT 7 1976

Larry Brawner
June 1976
Elizabethtown, Kentucky

NOV 9 1976

Photo 17. View from north. Un-
painted brick ell at left, porches,
dormer, small windows are modern.



Helm Place
Elizabethtown
Hardin County
Kentucky

OCT 7 1976

Larry Brawner
June 1976
Elizabethtown, Kentucky

NOV 9 1976

Photo 18. View from northeast.
Main block of house and probably
white-painted one-story wing are
original, unpainted extension of
ell is recent.



Helm Place
Elizabethtown
Hardin County
Kentucky

OCT 7 1976

Larry Brawner

June 1976

Elizabethtown, Kentucky

Photo 19. First flight of staircase, with typical millwork on rear door at right.

OCT 8 1976



Helm Place
Elizabethtown
Hardin County
Kentucky

OCT 7 1976

Larry Brawner
June 1976
Elizabethtown, Kentucky

Photo 20. Staircase looking down
from third floor.

NOV 9 1976



Helm Place
Elizabethtown
Hardin County
Kentucky

OCT 7 1976

Larry Brawner
June 1976
Elizabethtown, Kentucky

Photo 21. Turn-~~of~~-the-century
mantel in ~~p~~seudo-Federal style.

NOV 9 1976



Helm Place
Elizabethtown
Hardin County
Kentucky

OCT 7 1976

Larry Brawner
June 1976
Elizabethtown, Kentucky

Photo 22. Rear view of outbuilding north of rear ell of house (shown at far left).

NOV 9 1976



Helm Place
Elizabethtown
Hardin County
Kentucky

OCT 7 1976

Larry Brawner
June 1976
Elizabethtown

Photo 23. Large barn southeast
of house near Freeman Creek from
northwest.

NOV 9 1976



Helm Place
Elizabethtown
Hardin County
Kentucky

OCT 7 1976

Larry Brawner
June 1976
Elizabethtown, Kentucky

Photo 24. View in Helm Family
Cemetery, looking northwest toward
Dixie Highway.

Governor Helm monument in left
distance.

NOV 9 1976