





KENTUCKY HERITAGE COUNCIL  
STATE HISTORIC PRESERVATION OFFICE  
FRANKFORT, KENTUCKY 40601

Name Henry Colvin House (PD-7)(Early Stone Bldgs.)

Location Pendleton County, Kentucky

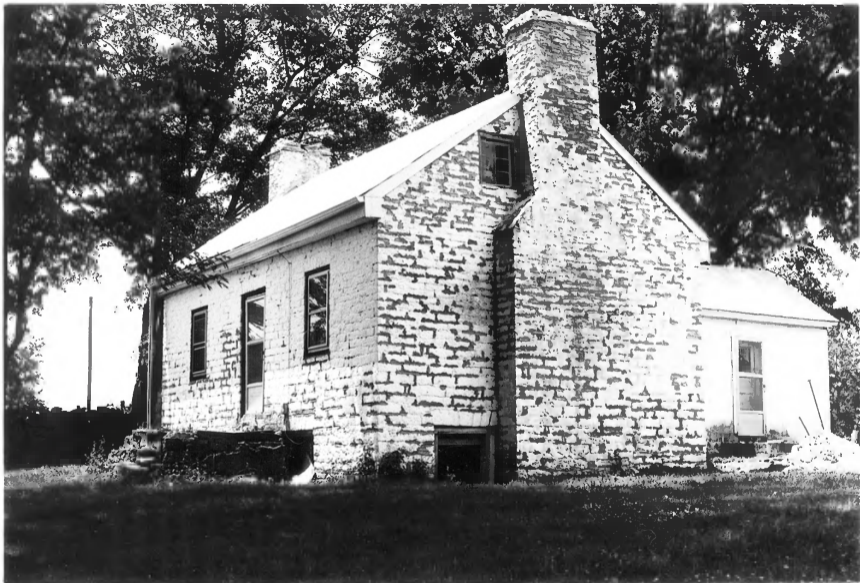
Photographer Carolyn Murray Wooley

Date Taken June 1984

Negative Location Kentucky Heritage Council

View west end and south front

Photo # 1





KENTUCKY HERITAGE COUNCIL  
STATE HISTORIC PRESERVATION OFFICE  
FRANKFORT, KENTUCKY 40601

Name Henry Colvin House (PD-7)(Early Stone Bldgs.)

Location Pendleton County, Kentucky

Photographer Carolyn Murray Wooley

Date Taken June 1984

Negative Location Kentucky Heritage Council

View South front and east end

Photo # 2





KENTUCKY HERITAGE COUNCIL  
STATE HISTORIC PRESERVATION OFFICE  
FRANKFORT, KENTUCKY 40601

Name Henry Colvin House (PD-7)(Early Stone Bldgs.)

Location Pendleton County, Kentucky

Photographer Carolyn Murray Wooley

Date Taken June 1984

Negative Location Kentucky Heritage Council

View west end

Photo # 3





KENTUCKY HERITAGE COUNCIL  
STATE HISTORIC PRESERVATION OFFICE  
FRANKFORT, KENTUCKY 40601

Name Henry Colvin House (PD-7)(Early Stone Bldgs.)

Location Pendleton County, Kentucky

Photographer Carolyn Murray Wooley

Date Taken June 1984

Negative Location Kentucky Heritage Council

View front door detail

Photo # 4