



E. G. Potter's Jasper Flour Mill
S. End Second Street
Bellevue, Jackson County, Iowa
Photo No. 1

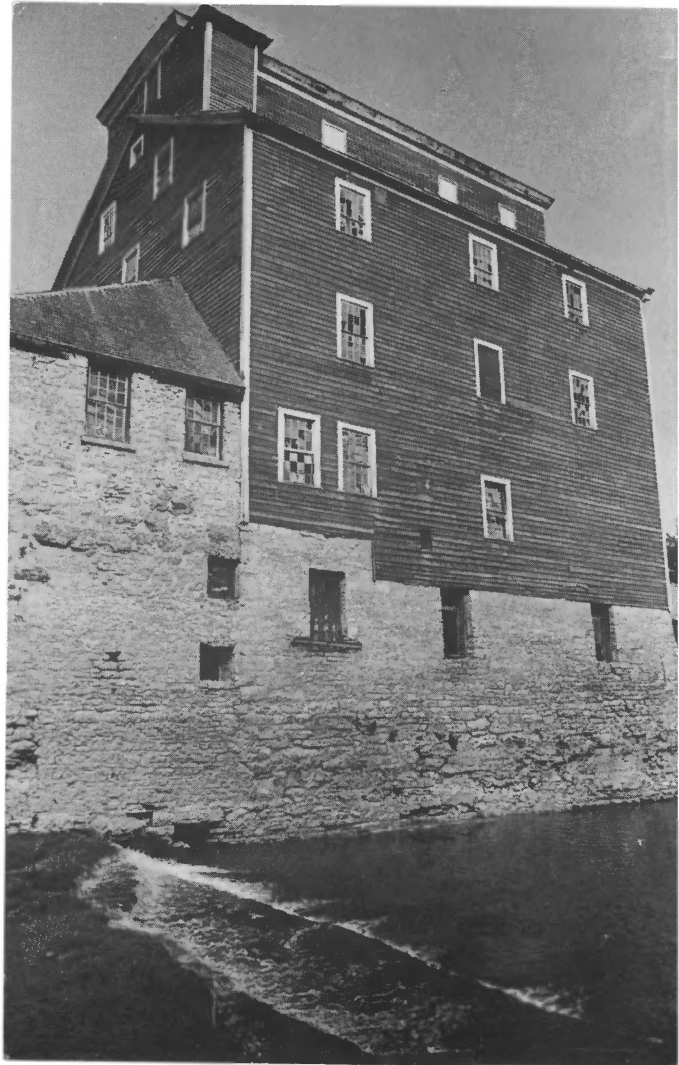
By: Unknown-Source, Paradise Farm
Collection.

Date: After 1896

View: to northeast, shows mill with
steam power, no dam, monitor
added.

Paradise Farm
Library

+ 1896



POTTERS GRAIN MILL

BUILT 1843 • D. E. SWEITZER, OWNER

BELLEVUE, IOWA • ON THE GREAT RIVER ROAD
BETWEEN DAVENPORT AND DUBUQUE.

Ode on Intimations
of Immortality

From Recollections of Early
Childhood

POST
CARD

PLACE
STAMP
HERE

(Bot

There v
The ear

E. G. Potter's Jasper Mill

S. End Second Street

Ap;

Bellevue, Jackson County, Iowa

The glo
It is not

Photo No. 2

Tu

Date; c. 1978

The thi

By: Unknown, postcard view

View: northeast across Mill Creek,
shows location of water wheel
far left-hand corner, water
discharge. (pre-restoration)



E. G. Potter's Jasper Mill

S. End Second Street

Bellevue, Jackson County, Iowa

Photo No. 3

By: Ms. Carolyn Eggers

Date: c. 1982

View: west, from southeast corner of
mill's south wall, along south
wall upstream. Note flared wall.



Potter's Mill, Beavercreek, MA.-exterior wall of stone room - arch rock'd in.

was in of water to the turbid stream

E. G. Potter's Jasper Mill

S. End Second Street

Bellevue, Jackson County, Iowa

Photo No. 4

By: Ms. Carolyn Eggers

Date: c. 1982

View: to east, head water intake
point for turbines, on west
power house wall.

Potter's Mill, Bellevue, Iowa: Viewed from the Northwest



E. G. Potter's Jasper Mill

S. End Second Street

Bellevue, Jackson County, Iowa

Photo No. 5

By: Ms. Carolyn Eggers

Date: 1982

View: to southeast, pre-restoration
view shows modern highway bridge,
scale house.



E. G. Potter's Jasper Mill

S. End Second Street

Bellevue, Jackson County, Iowa

Photo No. 6

By: Ms. Carolyn Eggers

Date: 1982

View: Interior, ceiling above grinding
floor, shows mounts, one grain
chute (upper left hand corner)



cupola-- elevators and chutes that distributed processed grain to bins

E. G. Potter's Jasper Mill

S. End Second Street

Bellevue, Jackson County, Iowa

Photo No. 7

By: Ms. Carolyn Eggers

Date: 1982

View: Interior, monitor elevator heads
for cleaned grain distribution.

Dotter's Mill, Bellevue Ia. "Jack-shaft" beneath ceiling on second floor



E. G. Potter's Jasper Mill

S. End Second Street

Bellevue, Jackson County, Iowa

Photo No. 8

By: Ms. Carolyn Eggers

Date: 1982

View: Interior, second floor ceiling
jack shaft, note columns.



E. G. Potter's Jasper Mill

S. End Second Street

Bellevue, Jackson County, Iowa

Photo No. 9

By: Ms. Carolyn Eggers

Date: 1982

View: Interior, corn elevator, first
floor, chute control.



E. G. Potter's Jasper Mill

S. End Second Street

Bellevue, Jackson County, Iowa

Photo No. 10

By: Ms. Carolyn Eggers

Date: 1982

View: interior, flight of stairs
between second and third floors.

Decker Hill Bellevue, Iowa - cupola-top of corn elevator, and chute covered



by the control wheel on the first floor

The large wooden wheel on the right of the picture has a paper label that reads "Ornamental Iron Works, Dubuque, Ia., Milling and Shingling Equipment"

E. G. Potter's Jasper Mill
S. End Second Street
Bellevue, Jackson County, Iowa
Photo No. 11
By: Ms. Carolyn Eggers
Date: 1982
View: interior, monitor, top of corn
elevator and swing chute. Dyas
Bros. stencil visible on equipment.



E. G. Potter's Jasper Mill
Bellevue, Jackson County, Iowa
Photo No. 12
Date: March 1984

E. G. POTTER'S JASPER MILLS,
Bellevue, Iowa 52031

East and South exteriors of the Mill as they
would be seen by people approaching Bellevue
from the South on Highway 52. Photo by
Daniel P. Eggers.



E. G. Potter's Jasper Mill
Bellevue, Jackson County, Iowa
Photo No. **13**
Date: March 1984

E. G. POTTER'S JASPER MILLS
Bellevue, Iowa 52031

**Creek level photo of the East exterior of
the Mill after restoration.
Photo by Daniel P. Eggers**



E. G. Potter's Jasper Mill
Bellevue, Jackson County, Iowa
Photo No. 14
Date: March 1984

E. G. POTTER'S JASPER MILLS,
Bellevue, Iowa 50141
East and North exteriors of the Mill
as they appear after restoration.
Photo was taken from the north end of the
Highway 52 bridge over Mill Creek.
Milwaukee Railroad trestle appears in
foreground. Photo by D.P. Eggers



E. G. Potter's Jasper Mill
Bellevue, Jackson County, Iowa
Photo No. 15
Date: March 1984

E.G. POTTER'S JASPER MILLS
Bellevue, Iowa 52031
The Mill as it would appear to a motorist
approaching from the East. Photo taken from
beneath the Railroad overpass.
Photo by Daniel P. Eggers.



E. G. Potter's Jasper Mill
Bellevue, Jackson County, Iowa

Photo No. **16**

Date: March 1984

E. G. POTTER'S JASPER MILLS,
Bellevue, Iowa 52031

North and West exteriors of the Mill after restoration. Scale house partially obscures the cement block addition on the North end of the stone lean-to. Photographer was standing at the east edge of 2nd St.

Photo by Daniel P. Eggers



E. G. Potter's Jasper Mill
Bellevue, Jackson County, Iowa
Photo No. 07
Date: March 1984

E. G. POTTER'S JASPER MILLS
Bellevue, Iowa 52031
South and West exteriors of the Mill
as viewed from across the Creek. South
wall requires finish coat of paint.
Highway 52 bridge and railroad trestle
can be seen in the background.
Photo by D.P. Eggers