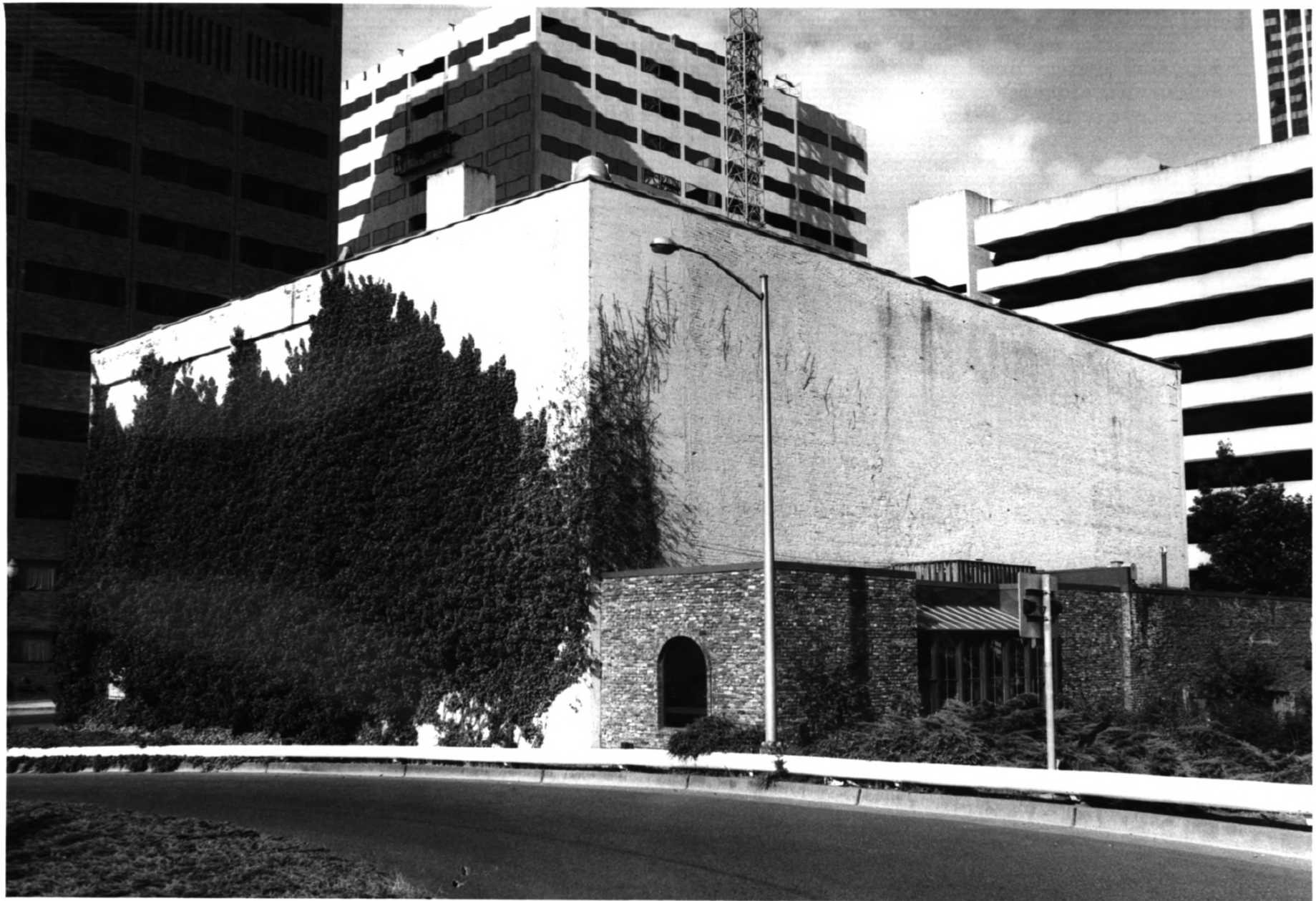


1. Jefferson Substation  
*37 SW JEFFERSON ST.*
2. Portland, OR  
*MULTNOMAH COUNTY*
3. George McMath  
*PHOTO*
4. August 1979
5. George McMath  
*213 SW ASH ST, #210  
PORTLAND, OR. 97204*
6. Current building  
looking northeast
7. #1. of 7

**JAN 14 1980**

MAY 31 1980



1. Jefferson Substation  
*37 SW JEFFERSON ST.*
2. Portland, OR  
*MULTNOMAH COUNTY*
3. George McMath  
*PHOTO*
4. August 1979
5. George McMath  
*213 SW ASH ST. #210  
PORTLAND, OR. 97204*
6. Current building  
looking northwest
7. #2. of 7

**JAN 14 1980**

MAY 31 1980

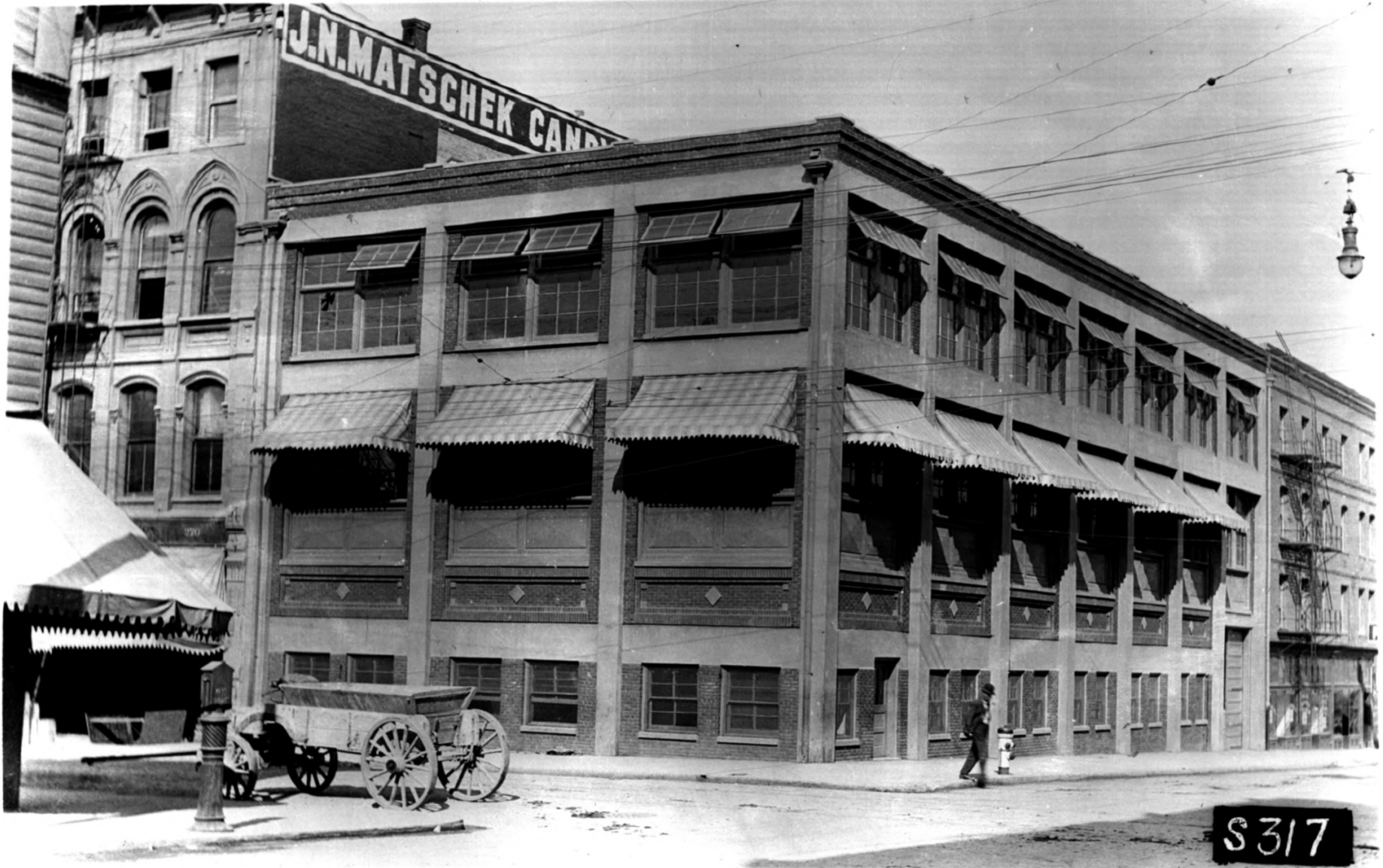


1. Jefferson Substation  
*37 SW JEFFERSON ST*
2. Portland, OR  
*MULTNOMAH COUNTY*
3. George McMath  
*PHOTO*
4. August 1979
5. George McMath  
*213 SW ASH ST. #210  
PORTLAND, OR. 97204*
6. Current view of  
main floor of  
1909 unit.  
Looking east.
7. #3. of 7

**JAN 14 1980**

MAY 31, 1980

J.N. MATSCHEK CANDY



S317

1. Jefferson Substation  
*375W JEFFERSON ST*
2. Portland, OR  
*MULTNOMAH COUNTY*
3. Unknown
4. c. 1909
5. Oregon Hist. Soc  
#PGE 66-1  
*1230 SW PARK AVENUE  
PORTLAND, OR. 97205*
6. Original building  
looking northeast
7. #4 of 7

**JAN 14 1980**  
MAY 31 1980





1. Jefferson Substation  
*37 SW JEFFERSON ST.*
2. Portland, OR  
*MULTNOMAH COUNTY*
3. Unknown
4. c. 1930
5. Oregon Hist. Soc.  
#PGE 66-3  
*1230 SW PARK AVENUE  
PORTLAND, OR. 97205*
6. Original building and  
Annex - looking  
northeast
7. #5. *of 7*

**JAN 14 1980**

**MAY 31 1980**



F 301-52-121

1. Jefferson Substation  
*37 SW JEFFERSON*
2. Portland, OR  
*MULTNOMAH COUNTY*
3. Unknown
4. c. 1930
5. Ore. Hist. Soc.  
# PGE 66-4  
*1230 SW PARK AVENUE  
PORTLAND, OR, 97205*
6. Main floor original  
building - looking  
east
7. #6. of 7

JAN 4 1980

MAY 31 1980



1. Jefferson Substation  
*37 JEFFERSON ST*

2. Portland, OR  
*MULTNOMAH COUNTY*

3. Unknown

4, c. 1930

5. Ore. Hist. Soc.  
#PGE 66-2  
*1230 SW PARK AVENUE  
PORTLAND, OR. 97205*

6. 2nd floor Annex  
looking east

7. #7. of 7

MAY 31 1980

**JAN 14 1980**