

United States Department of the Interior
National Park Service

56-1077

National Register of Historic Places Registration Form

This form is for use in nominating or requesting determinations for individual properties and districts. See instructions in National Register Bulletin, *How to Complete the National Register of Historic Places Registration Form*. If any item does not apply to the property being documented, enter "N/A" for "not applicable." For functions, architectural classification, materials, and areas of significance, enter only categories and subcategories from the instructions.



1. Name of Property

Historic name: River Heights Sinclair Station
Other names/site number: Oral's Service Station, Karl's Sinclair Station
Name of related multiple property listing: N/A
(Enter "N/A" if property is not part of a multiple property listing)

2. Location

Street & number: 594 South 400 East
City or town: River Heights State: UT County: Cache
Not For Publication: Vicinity:

3. State/Federal Agency Certification

As the designated authority under the National Historic Preservation Act, as amended,

I hereby certify that this nomination request for determination of eligibility meets the documentation standards for registering properties in the National Register of Historic Places and meets the procedural and professional requirements set forth in 36 CFR Part 60.

In my opinion, the property meets does not meet the National Register Criteria. I recommend that this property be considered significant at the following level(s) of significance:

national statewide local

Applicable National Register Criteria:

A B C D

 Signature of certifying official/Title: <u>Utah Division of State History/Office of Historic Preservation</u>	<u>4.10.17</u> Date
State or Federal agency/bureau or Tribal Government	
In my opinion, the property <input type="checkbox"/> meets <input type="checkbox"/> does not meet the National Register criteria.	
Signature of commenting official:	Date
Title :	State or Federal agency/bureau or Tribal Government

River Heights Sinclair Station
Name of Property

Cache County, Utah
County and State

4. National Park Service Certification

I hereby certify that this property is:

- entered in the National Register
- determined eligible for the National Register
- determined not eligible for the National Register
- removed from the National Register
- other (explain:)

Jon Edson H. Beall 6-12-17
Signature of the Keeper Date of Action

5. Classification

Ownership of Property

(Check as many boxes as apply.)

Private:

- Public – Local
- Public – State
- Public – Federal

Category of Property

(Check only **one** box.)

- Building(s)
- District
- Site
- Structure
- Object

River Heights Sinclair Station
Name of Property

Cache County, Utah
County and State

Number of Resources within Property

(Do not include previously listed resources in the count)

Contributing	Noncontributing	
<u>1</u>	<u> </u>	buildings
<u> </u>	<u> </u>	sites
<u> </u>	<u> </u>	structures
<u> </u>	<u> </u>	objects
<u>1</u>	<u> </u>	Total

Number of contributing resources previously listed in the National Register N/A

6. Function or Use

Historic Functions

(Enter categories from instructions.)

COMMERCE/TRADE: Specialty Store
TRANSPORTATION: Road-Related (Vehicular)

Current Functions

(Enter categories from instructions.)

BUSINESS: Office

River Heights Sinclair Station
Name of Property

Cache County, Utah
County and State

7. Narrative Description

(Describe the historic and current physical appearance and condition of the property. Describe contributing and noncontributing resources if applicable. Begin with a **summary paragraph** that briefly describes the general characteristics of the property, such as its location, type, style, method of construction, setting, size, and significant features. Indicate whether the property has historic integrity.)

Summary Paragraph

The River Heights Sinclair Station is a one-story service-bay building constructed in 1950. It is located at 594 South 400 East in River Heights, Utah. The service station can be categorized as an oblong box service station with a distinctive angled façade. The walls are concrete block with brick facing on the façade (south and southwest elevations). The building is taller than a typical one-story building with two service bays on the west elevation. There is a parapet on three elevations. The flat roof is built-up and slopes to the rear (north elevation). The service station never had an attached canopy and has always been painted white giving it a starkly Modern-style appearance. There is a concrete pump island at the southwest corner of the 0.19-acre parcel. The pumps were removed after the building was converted from a service station to a boat store in 1975. Other minor alterations included the removal of signage, a new front door, and the filling in of the south service bay with concrete block in 1990s. After a brief use as a residence beginning in the 1990s, the former service station was vacant for over a decade. In 2016, the current owner rehabilitated the building. The blocked bay was opened and new historically compatible garage doors with glass and wood panels. Overall the building retains good historic integrity. The River Heights Sinclair Station is a distinctive landmark in the neighborhood and contributes to the historic resources of semi-rural community of River Heights.

Narrative Description

The footprint of the River Heights Sinclair Station measures roughly 32.5 feet by 25.5 feet with an angled cut approximately 17.5 feet long at the southwest corner. The building sits on a 4-inch concrete pad. There is no basement. The walls are constructed of concrete block laid in a running bond with raked mortar joints. The angled façade is faced with gray-colored brick laid in a running bond with raked mortar joints. Rowlock brick are used for window sills on the façade. The building has no decorative elements. All of the original signage as seen in a circa 1970 photograph was removed in the 1980s [Figure 1]. The brick and block were painted white giving the building its Modern-style appearance. The walls of the one-story building are over 16-feet high with a seamed metal coping on three sides of the parapet. The built-up roof drains to the north where an aluminum rain gutter has been installed (circa 1990s). The building has been repainted white with contrasting green trim. Since the signage was the only decorative element on the building historically, similar historic "Sinclair" signs have been installed in order to restore the original feeling and association.

River Heights Sinclair Station
Name of Property

Cache County, Utah
County and State

The shorter south elevation of the façade is 13-feet long and has one opening, a large plate-glass window. A second plate-glass window is on the southwest angled portion of the façade. The windows are in aluminum frames that are circa 1990s replacements for the originals. The windows have been rehabilitated and painted with a contrasting green trim. The front door is in the center of the façade on the angled section. In 2016, a 1990s aluminum paneled door with a mail drop box was replaced with a historic half-glass wood-paneled door similar to the one seen in the circa 1970 photograph. A compatible light fixture was installed next to the door.

The west elevation has two garage-bay openings. The original doors were wood paneled and featured six square lights. In the 1990s, the north garage door was replaced with an aluminum door and the south opening was filled with unpainted concrete block and a door similar to the front door. The infill was removed in 2016. The new service bay doors are historically compatible wood and glass doors. The north elevation features two original six-light steel-sash windows with concrete sills. The east elevation has two similar windows in the service bay area. A small aluminum-slider window lights the bathroom in the front section of the building. All of the historic steel windows were rehabilitated in 2016. One new window (with similar sash) was added to the upper level of the east elevation to bring natural light into the office loft. The new opening is on a secondary elevation and does not impact the overall historic integrity.

The interior has 751 square feet of space. Originally, the space was divided into two areas: the office in front and the double service bay in the rear. A 1990s remodeling added carpet and wainscoting to the office space. These non-historic alterations were removed in 2016 and replaced with laminate flooring and plain painted walls. There are two partitioned spaces for the bathroom, and the furnace and water heaters. The bathroom was completely rehabilitated and made ADA accessible in 2016. A dividing wall was built between the two service bays when the building was converted to a residence in the 1990s. The service bay in the center of the building was partially finished. A bench was built around the interior perimeter. A staircase and loft was added when the service bay door was filled-in. The rear service bay was retained as an attached garage. In 2016, the non-historic wall was removed and the service bay areas repainted. The floors of the service bays are the original concrete with the drains filled in. The loft space has been retained, but a new code-compliant stair was installed. A kitchenette was added to the south wall of the service bays.

The service station is located in the southeast quadrant of a square 0.19-acre parcel. Only a few feet separate the east elevation of the building from a large tree on the neighboring property. The front of the property features the pump island. The surrounding concrete was poured in a radiating pattern of wedges. The west section of the property is an asphalt driveway to the service bays.

The Sinclair Station is the only building of its kind in River Heights. Although simple in appearance, the distinctive oblong box is fairly modern for this mostly residential community. The historic character of the simple building is basically intact in the qualities of location, setting, workmanship, materials, and feeling. As the only service station building in River Heights, Utah, the Sinclair Station is a contributing historic resource in the community.

River Heights Sinclair Station
Name of Property

Cache County, Utah
County and State

8. Statement of Significance

Applicable National Register Criteria

(Mark "x" in one or more boxes for the criteria qualifying the property for National Register listing.)

- A. Property is associated with events that have made a significant contribution to the broad patterns of our history.
- B. Property is associated with the lives of persons significant in our past.
- C. Property embodies the distinctive characteristics of a type, period, or method of construction or represents the work of a master, or possesses high artistic values, or represents a significant and distinguishable entity whose components lack individual distinction.
- D. Property has yielded, or is likely to yield, information important in prehistory or history.

Criteria Considerations

(Mark "x" in all the boxes that apply.)

- A. Owned by a religious institution or used for religious purposes
- B. Removed from its original location
- C. A birthplace or grave
- D. A cemetery
- E. A reconstructed building, object, or structure
- F. A commemorative property
- G. Less than 50 years old or achieving significance within the past 50 years

River Heights Sinclair Station
Name of Property

Cache County, Utah
County and State

Areas of Significance

(Enter categories from instructions.)

TRANSPORATION

Period of Significance

1950-1967

Significant Dates

1950

1963

1965

Significant Person

(Complete only if Criterion B is marked above.)

N/A

Cultural Affiliation

N/A

Architect/Builder

Unknown

River Heights Sinclair Station
Name of Property

Cache County, Utah
County and State

Statement of Significance Summary Paragraph (Provide a summary paragraph that includes level of significance, applicable criteria, justification for the period of significance, and any applicable criteria considerations.)

The River Heights Sinclair Station, built in 1950, is locally significant under Criterion A for its association with the development of River Heights, Utah in the mid-twentieth century. Under Criterion A in the area of Transportation, the building is significant as the only service station ever constructed in the small rural community of River Heights. The period of significance is 1950 to 1967 (fifty years ago). For the first fifteen years the service station was operated by Oral Stirland, who leased the building from long-term owners, Newell Lavon Fuhriman and his son, Newell Dean Fuhriman. It was later operated by Karl Bindrup between 1965 and 1975. Oral Stirland's Sinclair Station was primarily an automobile fuel and repair facility, but in the mid-1960s Karl Bindrup provided additional services such as tractor, lawnmower and small engine repairs. Bindrup's Sinclair Station was a gathering spot. He stocked penny candy for the children after the community's only general store closed down.

The Sinclair Station provided a vital service to the citizens of River Heights who, like most of America, had increased their reliance on the automobile after World War II. The service station was particularly important when the rainstorms overwhelmed the only bridge between River Heights and the larger city of Logan. During rising flood levels, having a local fuel stop was particularly important as the only alternate routes to work places, shopping centers, medical facilities, and the regional high school or state college in Logan were quite lengthy. As the only real commercial building in town, it was architecturally unique in contrast to the residential construction. After serving for decades as a service station, the building was later used as a boat shop and was used as a residence for a few years in the 1990s. The building is currently used as a studio by a local photographer. The River Heights Station is a contributing historic commercial resource in this small residential community.

Narrative Statement of Significance (Provide at least **one** paragraph for each area of significance.)

BRIEF HISTORY OF RIVER HEIGHTS, UTAH

Most of the land in River Heights was first owned by residents of Providence and called the Providence Bench. Providence was settled in 1859 a little over a mile to the south. Providence farmers raised hay and grazed cattle on the bench land above Spring Creek, a tributary of the Logan River. The river separates the River Heights area from Cache County's largest city, Logan, which was settled in 1856 and is the county seat. The first nine families of permanence settled the Providence Bench in 1883, at which point the community was called Dry Town. In the early days, crossing the river entailed a steep slope and unpredictable water levels. The first bridge over the Logan River in the area was built in 1891. On May 4, 1908, The River Heights Ward of the Church of Jesus Christ of Latter-day Saints (LDS or Mormon Church) was organized. The first chapel was built in 1910 and the first school house built in 1912. The name of River Heights was adopted by the community when it was incorporated on October 31, 1934. For the first half of the twentieth century, River Heights remained a small, self-sufficient community that was frequently isolated from other Cache County towns by rising flood waters.

River Heights Sinclair Station
Name of Property

Cache County, Utah
County and State

At the end of World War II, River Heights was described as “still a little town with a pasture beside almost every residence.”¹ Between 1940 and 1950, the city grew modestly from 288 to 468 residents, but it was still a place where “women walked to town (Logan) and back, and most baked their own bread and canned from their own gardens.”² In 1948, Vernon Bindrup built the first grocery store in River Heights. Another commercial building in town was Ephraim Lundberg’s dry cleaning business.³ The River Heights Sinclair Station is one of only three commercial buildings ever built in the mostly rural hamlet. It is the only one that is still commercial in appearance. Anticipating post-war growth, the city built a modern school in 1951. Around the same time, the LDS Church expanded its chapel with a large cultural hall and classroom wing. The population grew to 880 in 1960 as many of the former pastures were filled with ranch houses. During this period of growth, a second bridge was added. The population remained around 1,000 for several decades. In 2010, the population reached 1,734. Today River Heights is considered a suburb of Logan with no visible commercial activity.

TRANSPORTATION SIGNIFICANCE OF THE RIVER HEIGHTS SINCLAIR STATION

The River Heights Sinclair Station is significant under Criterion A in the area of Transportation as the only service station built and operated in River Heights. The Sinclair Station played an important role in the transportation needs of the River Heights community during the period of significance between 1950 and 1967. The service station provided the vital fuel and repair facilities for the isolated community. Prior to World War II, many residents of River Heights had automobiles, but just one per household, usually driven to work outside of River Heights by the family breadwinner. During the period of significance, automobile ownership in the area increased. Drivers primarily made trips to Logan where opportunities for employment, shopping, entertainment, and medical services were available. Schooling above the elementary grade level was only available in neighboring Logan. In the 1950s and 1960s, two bridges connected River Heights to Logan. One bridge over the Logan River at the north end of town and one bridge over the gully at the south end of town. A sudden downpour could result in impassible bridges and necessitate a long detour on mud-soaked rural roads.⁴

The River Heights Sinclair Station was built in 1950 at the corner of 400 East and 600 South.⁵ The property was obtained by Newell Lavon Fuhriman and his son, Newell Dean Fuhriman, in December 1949, from the farming family of Peter J. and Mabel Hansen Griffin. The spring of 1949 had been particularly bad for flash floods and rising rivers in northern Utah.⁶ Lavon Fuhriman was an implement dealer. His son, Dean, operated a successful farm in Ridgedale, Idaho. The Fuhriman family built the service station, but never personally operated it.

¹ *The History of River Heights, Utah*, published by the River Heights Civic Club, (Logan, Utah: Herald Printing Co., Inc., 1988): 51.

² *Ibid.*

³ Both buildings are extant. Bindrup’s store at 400 South and 400 East has been converted to apartments and is no longer recognizable as a commercial building. Lundberg’s building on 600 South is a typical one-story commercial building, but the storefront has been blocked with brick and a garage door. Most commercial activity in River Heights was conducted historically from residences.

⁴ Today River Heights is still served by the same two bridge locations; however, the bridges are sturdier, the number of paved roads has increased dramatically, and flood management infrastructure helps to control the excess water.

⁵ The north-south running 400 East is also known as River Heights Road. The street numbering system is an extension of the Logan grid.

⁶ *Salt Lake Telegram*, May 17, 1949.

River Heights Sinclair Station
Name of Property

Cache County, Utah
County and State

The first tenant was Oral Stirland's Sinclair service station. Oral Fred Stirland was born in Providence on July 1, 1920, to Richard William Stirland and Lillie Elizabeth Schrenk Stirland. At the age of nineteen, he is listed with his family in Providence as a garage mechanic on the 1940 census. On January 21, 1942, Oral Stirland married LaRue James just a few months before he enlisted in the United States Army. He served until November 1945 rising in rank from private to corporal. Oral and LaRue divorced after the war. Oral married Carol Aller Preece in 1950. He spent a few years working as a mechanic in Logan before operating his own Sinclair service station in River Heights. The white-painted concrete-block building would have been a stark contrast to the brick and frame homes in the community. The building can be categorized as a modified oblong box service station, a gas station typology that was common for the period.⁷ The Sinclair Station is distinctively modern in style with an angled façade and no original or subsequent canopy.

Oral Stirland acquired his Sinclair franchise the same year the company founder Harry Sinclair, retired. Sinclair Oil was established in 1916 and its growth was concentrated along the Rocky Mountains. The Sinclair Oil Company had its headquarters in Salt Lake City, but there is no evidence the company designed or directed the building style of its franchise holders. The design of the River Heights station is primarily utilitarian with the angled façade informed by its prominent street corner location.

City directories for the 1950s list twenty-seven service stations in Cache County. All were in Logan, except for the Sinclair Station in River Heights and one station in Providence. Of that number, only ten original buildings survive. Five buildings no longer resemble historic service stations. The remaining four were built prior to 1940, which leaves the River Heights Sinclair Station the only representative of a post-World War II service station in the Cache Valley area.⁸

Oral Stirland continued to operate the service station until 1965. After Lavon Fuhrman died in 1953, the deed transferred to his widow, Mamie Johnson Fuhrman and her son, Dean. Oral Stirland died on June 20, 1987, in Logan. Between 1965 and 1979, Karl Alanson Bindrup operated the service station as Karl's Sinclair. Like Oral, Karl started his business the same year he was married. By the time Karl took over the station, a new bridge and flood management had mitigated many of the difficulties faced by community residents. In addition to automobile service, Karl offered tractor, lawnmower, and other small engine repair services. His reputation as a repairman brought in patrons from all over the Cache Valley. Karl's Sinclair Service Station was a community gathering spot where neighbors would stop to talk. Karl and his wife Barbara sold penny candy to neighborhood kids after the only general store in town closed. After his retirement, Karl said he missed the kids the most.⁹

⁷ John A. Jakle and Keith A. Sculle, *The Gas Station in America*, (Baltimore: John Hopkins University Press, 1994): 134.

⁸ No gas is currently pumped at any of the extant examples. Two recognizable stations are within the *Logan Center Street Historic District* (NRIS #1111): 96 E. Center and 46 N. 100 West. Two are just south of the historic district: Baugh Service at 167 S. Main is now the office of a motel complex and 202 S. Main is a floral shop. Burrell Automotive at 5 N. Main in Providence still provides auto repair.

⁹ Karl and Barbara Bindrup, telephone interview conducted by author, April 6, 2017.

River Heights Sinclair Station
Name of Property

Cache County, Utah
County and State

SUBSEQUENT HISTORY OF THE SERVICE STATION

In 1975, Mamie Fuhriman deeded her interest in the property to Dean and his wife, Anna F. Fuhriman. A year later, the deed was transferred to the Fuhriman Farms Partnership. In 1980, the lease was obtained by Don Flaherty, who established Don's Auto & Marine in the building. By 1984, the business had outgrown the property and was moved to nearby Smithfield, Utah. The Fuhriman family sold the property to William D. Carson in 1987. It was later remodeled as a residence. William D. Carson sold the property to the current owner, Rulon A. Johnson, in 2014. The Johnson family completed the rehabilitation of the building in 2016. It is currently leased by a local River Heights photographer. The business is called Station Studio and the space is available to rent as a photograph studio.

9. Major Bibliographical References

Bibliography (Cite the books, articles, and other sources used in preparing this form.)

Bindrup, Karl and Barbara. Telephone interview conducted by author, April 6, 2017.

Cache County. Recorder's Office and Assessor's Office.

Gorel, Mike. "Utah-based Sinclair Oil: Going Places at age 100." *Salt Lake Tribune*, July 10, 2016.

Jakle, John A., and Keith A. Sculle. *The Gas Station in America*. Baltimore: John Hopkins University Press, 1994.

Logan Herald Journal, various issues.

Peterson, F. Ross. *A History of Cache, County*. Utah Centennial County History Series, Utah State Historical Society. Salt Lake City, Utah: Utah State Historical Society, 1996.

River Heights Civic Club. *The History of River Heights, Utah*. Published by the River Heights Civic Club. Logan, Utah: Herald Printing Co., Inc., 1988.

R. L. Polk Directories. *Logan and Vicinity*, 1949-1988.

Salt Lake Telegram, various issues.

River Heights Sinclair Station
Name of Property

Cache County, Utah
County and State

Previous documentation on file (NPS):

- preliminary determination of individual listing (36 CFR 67) has been requested
- previously listed in the National Register
- previously determined eligible by the National Register
- designated a National Historic Landmark
- recorded by Historic American Buildings Survey # _____
- recorded by Historic American Engineering Record # _____
- recorded by Historic American Landscape Survey # _____

Primary location of additional data:

- State Historic Preservation Office
 - Other State agency
 - Federal agency
 - Local government
 - University
 - Other
- Name of repository: _____

Historic Resources Survey Number (if assigned): _____

10. Geographical Data

Acreage of Property 0.19 acres

Use either the UTM system or latitude/longitude coordinates.

Latitude/Longitude Coordinates

Datum if other than WGS84: _____ (enter coordinates to 6 decimal places)

Latitude: 41.721558°

Longitude: -111.825581°

Or

UTM References

Datum (indicated on USGS map):

NAD 1927 or NAD 1983

Zone: 12

Easting: 431329

Northing: 4619192

River Heights Sinclair Station
Name of Property

Cache County, Utah
County and State

Verbal Boundary Description (Describe the boundaries of the property.)

BEG 481.25 FT W FROM NE COR SW/4 SEC 3 T 11N R 1E & TH W 63 FT M/L TO E LINE CO ROAD TH S 0°15' E 88 FT ALG ST TO TRUE POB TH S ALG SD ROAD 129 FT M/L TO N LINE CO ROAD RUNNING TO PROVIDENCE TH E ALG SD ROAD 66 FT TO PT 3 FT E OF A PT S 0°15' E OF BEG TH N 0°15' W 25 FT TH W 3 FT TH N 0°15' W 104 FT TO TRUE POB. (02-16-0050)

Boundary Justification (Explain why the boundaries were selected.)

The boundaries are those associated with the property currently and historically.

11.

Form Prepared By:

name/title: Korral Broschinsky
e-mail: kbro@kbropreservation.com telephone: 801-913-5645
date: April 6, 2017

Property Owner information:

(Complete this item at the request of the SHPO or FPO.)

name: Rulon A. Johnson (contact: Tony Johnson)
address: 88 West Center
city or town: Logan state: Utah zip code: 84321
telephone/email: 435-764-2200

Additional Documentation

Submit the following items with the completed form:

- **Maps:** A USGS map or equivalent (7.5 or 15 minute series) indicating the property's location.
- **Sketch map** for historic districts and properties having large acreage or numerous resources. Key all photographs to this map.
- **Additional items:** (Check with the SHPO, TPO, or FPO for any additional items.)

Paperwork Reduction Act Statement: This information is being collected for applications to the National Register of Historic Places to nominate properties for listing or determine eligibility for listing, to list properties, and to amend existing listings. Response to this request is required to obtain a benefit in accordance with the National Historic Preservation Act, as amended (16 U.S.C.460 et seq.).

Estimated Burden Statement: Public reporting burden for this form is estimated to average 100 hours per response including time for reviewing instructions, gathering and maintaining data, and completing and reviewing the form. Direct comments regarding this burden estimate or any aspect of this form to the Office of Planning and Performance Management, U.S. Dept. of the Interior, 1849 C. Street, NW, Washington, DC.

River Heights Sinclair Station
Name of Property

Cache County, Utah
County and State

Photographs

Submit clear and descriptive photographs. The size of each image must be 1600x1200 pixels (minimum), 3000x2000 preferred, at 300 ppi (pixels per inch) or larger. Key all photographs to the sketch map. Each photograph must be numbered and that number must correspond to the photograph number on the photo log. For simplicity, the name of the photographer, photo date, etc. may be listed once on the photograph log and doesn't need to be labeled on every photograph.

Photo Log

Name of Property: River Heights Sinclair Station
City or Vicinity: River Heights
County: Cache State: Utah
Photographer: Korral Broschinsky
Date Photographed: April 2017

Description of Photograph(s) and number, include description of view indicating direction of camera:



Photograph 1

South and west elevations of River Heights Sinclair Station. Camera facing northeast.

River Heights Sinclair Station
Name of Property

Cache County, Utah
County and State



Photograph 2
West elevations of River Heights Sinclair Station. Camera facing east.



Photograph 3
North and west elevations of River Heights Sinclair Station. Camera facing south.

River Heights Sinclair Station
Name of Property

Cache County, Utah
County and State



Photograph 4
North elevation of the River Heights Sinclair Station. Camera facing north.



Photograph 5
North and east elevations of the River Heights Sinclair Station. Camera facing southwest.

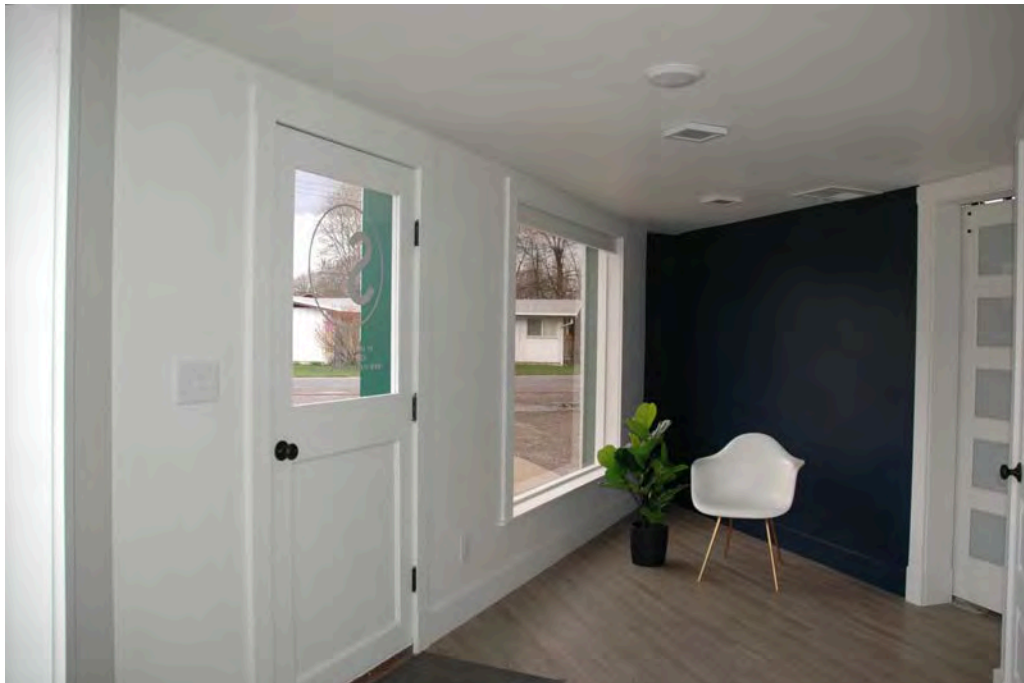
River Heights Sinclair Station
Name of Property

Cache County, Utah
County and State



Photograph 6

South and east elevations of River Heights Sinclair Station. Camera facing northwest.



Photograph 7

River Heights Sinclair Station, interior, office. Camera facing west.

River Heights Sinclair Station
Name of Property

Cache County, Utah
County and State



Photograph 8

River Heights Sinclair Station, interior, service bays. Camera facing southwest.



Photograph 9

River Heights Sinclair Station, interior, service bays. Camera facing northwest.

River Heights Sinclair Station
Name of Property

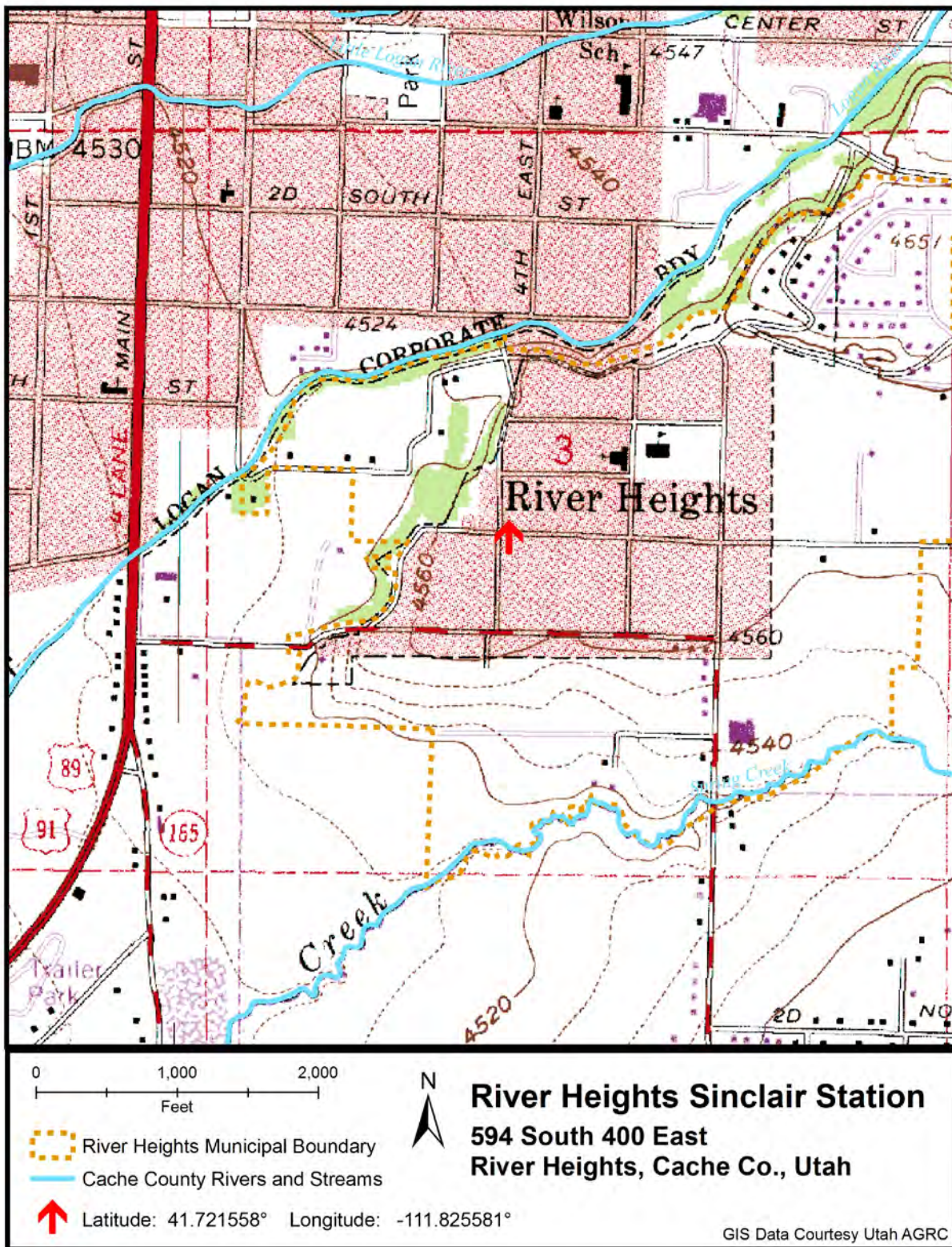
Cache County, Utah
County and State



Figure 1
Karl's (formerly Oral's) Service Station (circa 1970).
Courtesy Cache County Tax Assessor's Office.

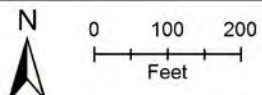
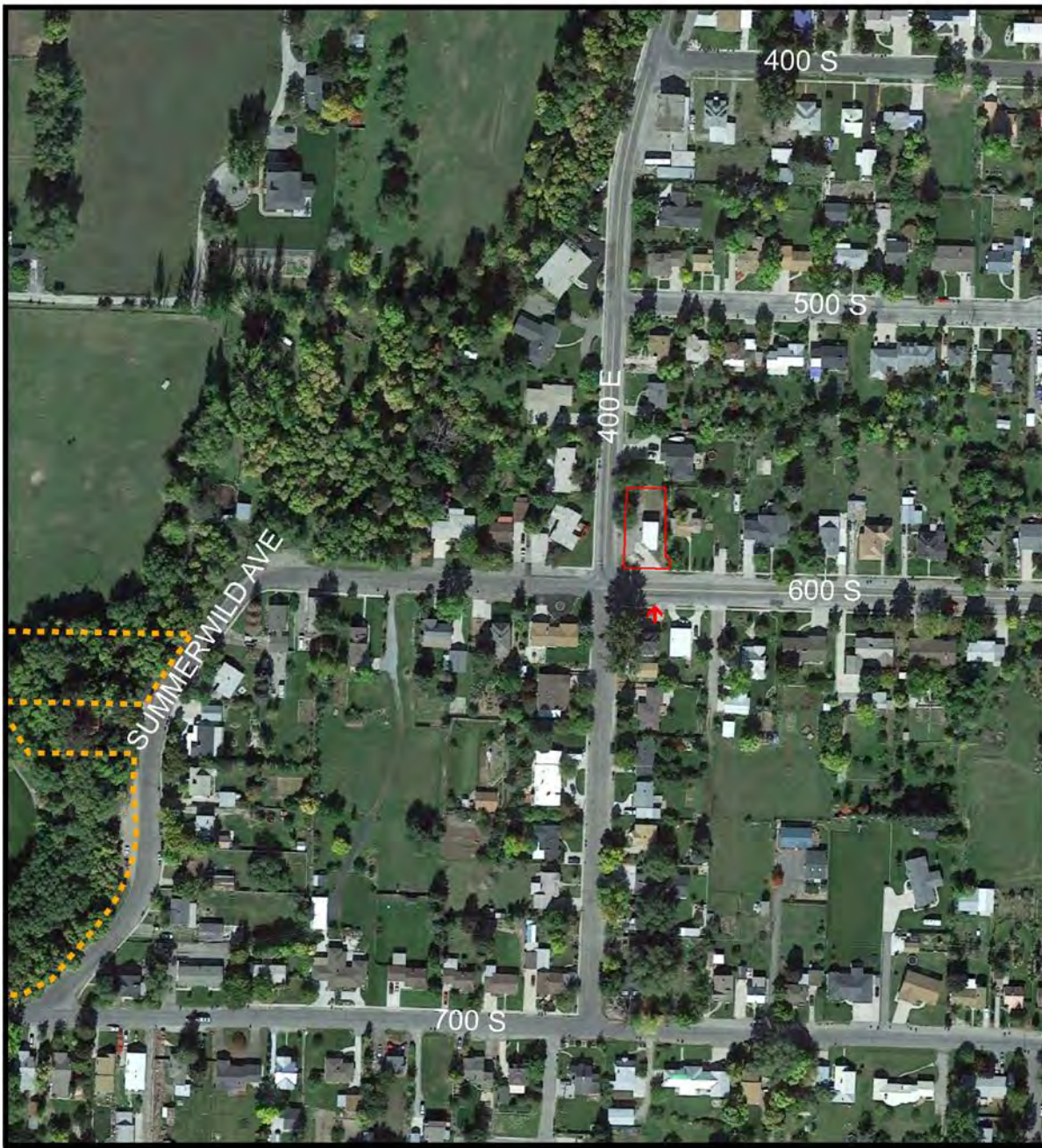
River Heights Sinclair Station
Name of Property

Cache County, Utah
County and State



River Heights Sinclair Station
Name of Property

Cache County, Utah
County and State



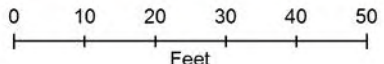
- River Heights Municipal Boundary
- Current Parcel
- Latitude: 41.721558° Longitude: -111.825581°

River Heights Sinclair Station
594 South 400 East
River Heights, Cache Co., Utah

GIS Data Courtesy Utah AGRC

River Heights Sinclair Station
Name of Property

Cache County, Utah
County and State



River Heights Sinclair Station
594 South 400 East
River Heights, Cache Co., Utah

 National Register of Historic Places PHOTOKEY

GIS Data Courtesy Utah AGRC

SINCLAIR

WASHING

LUBRICATION

5
9
4





WASHING

LUBRICATION

SINCLAIR

594



WASHING

LUBRICATION

WASHING

LUBRICATION













SINCLAIR

LUBRICATION

SINCLAIR

KARL'S



UNITED STATES DEPARTMENT OF THE INTERIOR
NATIONAL PARK SERVICE

NATIONAL REGISTER OF HISTORIC PLACES
EVALUATION/RETURN SHEET

Requested Action:

Property Name:

Multiple Name:

State & County:

Date Received: Date of Pending List: Date of 16th Day: Date of 45th Day: Date of Weekly List:

Reference number:

Nominator:

Reason For Review:

Accept Return Reject Date

Abstract/Summary Comments:

Recommendation/ Criteria

Reviewer Edson Beall Discipline Historian

Telephone _____ Date _____

DOCUMENTATION: see attached comments : No see attached SLR : No

If a nomination is returned to the nomination authority, the nomination is no longer under consideration by the National Park Service.



GARY R. HERBERT
Governor

SPENCER J. COX
Lieutenant Governor

Jill Remington Love
Executive Director
Department of
Heritage & Arts



Brad Westwood
Director



April 20, 2017

TO: Mr. J. Paul Loether, Deputy Keeper and Chief
National Register of Historic Places
National Park Service 2280, 8th Floor;
1201 Eye (I) Street, NW; Washington, DC 20005

FROM: J. Cory Jensen, National Register Coordinator
Utah State Historic Preservation Office

RE: River Heights Sinclair Station, Cache County, National Register of Historic Places
nomination

Mr. Loether,

The enclosed disk contains the true and correct copy of the nomination form for the **River Heights Sinclair Station** to the National Register of Historic Places. The other disk contains the photograph image files of the property in TIF format. Should you have any questions, please contact me at coryjensen@utah.gov or 801/245-7242.

Thank you,


J. Cory Jensen

Enclosures:

- 1 CD with PDF of the NRHP nomination form and correspondence/additional info
- 1 CD with electronic images (tif format)
- 1 Physical Transmission Letter
- 1 Physical Signature Page, with original signature
- Other:

Comments:

- _____ Please ensure that this nomination receives substantive review
- _____ The enclosed owner(s) objection(s) do _____ do not _____
- _____ constitute a majority of property owners.
- _____ Other: