

United States Department of the Interior  
National Park ServiceNational Register of Historic Places  
Continuation Sheet

FEB 15 2019

McCartney School

Name of Property

Section Removal Page 1

Otoe County, Nebraska

County and State

The McCartney School was located at the northwest intersection of H Road and North 58<sup>th</sup> Road, northwest of Nebraska City in Otoe County. It was listed in the National Register of Historic Places at the local level of significance on November 15, 2000 under Criterion A for its significance in Education. It was listed under the Historic & Architectural School Buildings in Nebraska Multiple Property Documentation (MPD). The NPS listing number for this property is: 00001379. The McCartney School (District 17) was a one-story brick utilitarian building constructed in 1927. It was an excellent representative example of the most common pattern of rural education that persisted on the Nebraska landscape since the late nineteenth century. The rural school tangibly illustrated the enduring capacity of the traditional one-room schoolhouse to successfully educate the young.

The McCartney School ceased as an educational center in 2004 and the property was sold into private ownership. Due to its deteriorated condition the McCartney School was demolished in 2010.

As documented in 36 CFR 60.15(a)(1), loss of integrity demonstrated by the alterations listed above supplies grounds for removing this property from the National Register.

As the designated authority under the National Historic Preservation Act of 1986, as amended, I hereby certify that this ☐ nomination ☐ request for determination of eligibility meets the documentation standards for registering properties in the National Register of Historic Places and meets the procedural and professional requirements set forth in 36 CFR Part 60. In my opinion, the property ☐ meets ☐ does not meet the National Register Criteria. I recommend that this property be considered significant ☐ nationally ☐ statewide ☐ locally. (☐ See continuation sheet for additional comments.)

Signature of certifying official

Date

Director, Nebraska State Historical Society

State or Federal agency and bureau

In my opinion, the property ☐ meets ☐ does not meet the National Register criteria. (☐ See continuation sheet for additional comments.)

Signature of certifying official/Title

Date

State or Federal agency and bureau

## 4. National Park Service Certification

I, hereby, certify that this property is:

☐ entered in the National Register.☐ see continuation sheet.☐ determined eligible for the National Register.☐ see continuation sheet.☐ determined not eligible for the National Register.☒ removed from the National Register.☐ other, (explain):

Signature of Keeper

Date of Action



United States Department of the Interior  
National Park Service

**National Register of Historic Places  
Continuation Sheet**

**McCartney School**

Name of Property

Section Removal Page 2

**Otoe County, Nebraska**

County and State



Image 1: View of noncontributing building remaining on former site of McCartney School; view northwest.



Image 2: View of noncontributing building remaining on former site of McCartney School; view northeast.





5797



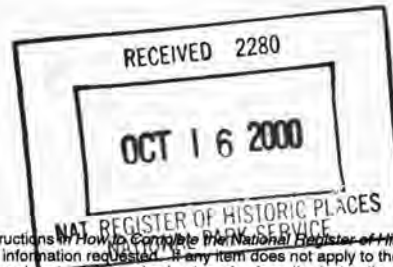




United States Department of the Interior  
National Park Service

National Register of Historic Places  
Registration Form

This form is for use in nominating or requesting determinations for individual properties and districts. See instructions on how to complete the National Register of Historic Places Registration Form (National Register Bulletin 16A). Complete each item by marking "X" in the appropriate box or by entering the information requested. If any item does not apply to the property being documented, enter "N/A" for "not applicable". For functions, architectural classification, materials, and areas of significance, enter only categories and subcategories from the instructions. Place additional entries and narrative items on continuation sheets (NPS Form 10-900a). Use a typewriter, word processor, or computer to complete all items.



1. Name of Property

Historic name McCartney School District 17

Other names/site number McCartney Rural School

2. Location

Street & number Southeast intersection of Steamwagon Rd & County Trunk Highway (CTH) 59

Not for publication ☐

City or town Nebraska City

Vicinity ☐

State Nebraska Code NE County Otoe Code 131 Zip code 68410

3. State/Federal Agency Certification

As the designated authority under the National Historic Preservation Act of 1986, as amended, I hereby certify that this ☒ nomination ☐ request for determination of eligibility meets the documentation standards for registering properties in the National Register of Historic Places and meets the procedural and professional requirements set forth in 36 CFR Part 60. In my opinion, the property ☒ meets ☐ does not meet the National Register Criteria. I recommend that this property be considered significant ☐ nationally ☐ statewide ☒ locally. (See continuation sheet for additional comments.)

Andrew Sommer  
Signature of certifying official

10/10/00  
Date

Director, Nebraska State Historical Society  
State or Federal agency and bureau

In my opinion, the property ☐ meets ☐ does not meet the National Register criteria. (See continuation sheet for additional comments.)

\_\_\_\_\_  
Signature of certifying official/Title

\_\_\_\_\_  
Date

\_\_\_\_\_  
State or Federal agency and bureau

4. National Park Service Certification

I, hereby, certify that this property is:

☒ entered in the National Register.

☐ see continuation sheet.

☐ determined eligible for the National Register.

☐ see continuation sheet.

☐ determined not eligible for the National Register.

☐ removed from the National Register.

☐ other, (explain): \_\_\_\_\_

Ethan H. Beal 11.15.00

[Signature]  
Signature of Keeper

\_\_\_\_\_  
Date of Action

**McCartney School**

Name of Property

**Otoe County, Nebraska**

County and State

## 5. Classification

### Ownership of Property

(Check as many boxes as apply)

☐ Private  
☒ Public-local  
☐ Public-state  
☐ Public-federal

### Category of Property

(Check only one box)

☒ Building(s)  
☐ District  
☐ Site  
☐ Structure  
☐ Object

### Number of Resources within Property

(Do not include previously listed resources in the count.)

Contributing	Noncontributing	
<u>1</u>	<u>1</u>	Buildings
<u>  </u>	<u>  </u>	Sites
<u>  </u>	<u>  </u>	Structures
<u>  </u>	<u>  </u>	Objects
<u>1</u>	<u>1</u>	Total

### Name of related multiple property listing

(Enter "N/A" if property is not part of a multiple property listing.)

Historic & Architectural School Buildings in Nebraska

### Number of contributing resources previously listed in the National Register

N/A

## 6. Function or Use

### Historic Functions

(Enter categories from instructions.)

EDUCATION/School

### Current Functions

(Enter categories from instructions.)

EDUCATION/School

## 7. Description

### Architectural Classification

(Enter categories from instructions.)

OTHER

### Materials

(Enter categories from instructions.)

Foundation CONCRETE

Walls BRICK

Roof ASPHALT

Other   

### Narrative Description

(Describe the historic and current condition of the property on one or more continuation sheets.)

## 8. Statement of Significance

### Applicable National Register Criteria

(Mark "X" in one or more boxes for the criteria qualifying the property for National Register listing.)

- ☒ **A** Property is associated with events that have made a significant contribution to the broad patterns of our history.
- ☐ **B** Property is associated with the lives of persons significant in our past.
- ☐ **C** Property embodies the distinctive characteristics of a type, period, or method of construction or represents the work of a master, or possesses high artistic values, or represents a significant and distinguishable entity whose components lack individual distinction.
- ☐ **D** Property has yielded, or is likely to yield information important in prehistory or history.

### Criteria Considerations

(Mark "X" in all the boxes that apply.)

Property is:

- ☐ **A** Owned by a religious institution or used for religious purposes.
- ☐ **B** Removed from its original location.
- ☐ **C** A birthplace or a grave.
- ☐ **D** A cemetery.
- ☐ **E** A reconstructed building, object, or structure.
- ☐ **F** A commemorative property.
- ☐ **G** Less than 50 years of age or achieved significance within the past 50 years.

### Narrative Statement of Significance

(Explain the significance of the property on one or more continuation sheets.)

### Areas of Significance

(Enter categories from instructions.)

EDUCATION

### Period of Significance

1927

### Significant Dates

1927

1949

### Significant Person

(Complete if Criterion B is marked above.)

N/A

### Cultural Affiliation

N/A

### Architect/Builder

Unknown

## 9. Major Bibliographical References

### Bibliography

(Cite the books, articles, and other sources used in preparing this form on one or more continuation sheets.)

#### Previous documentation on file (NPS):

- ☐ Preliminary determination of individual listing (36 CFR 67) has been requested
- ☐ Previously listed in the National Register
- ☐ Previously determined eligible by the National Register
- ☐ Designated a National Historic Landmark
- ☐ Recorded by Historic American Buildings Survey # \_\_\_\_\_
- ☐ Recorded by Historic American Engineering Record # \_\_\_\_\_

#### Primary location for additional data:

- ☐ State Historic Preservation Office
- ☐ Other State agency
- ☐ Federal agency
- ☐ Local Government
- ☐ University
- ☒ Other
- Name of repository: McCartney School Dist. 17

# 10. Geographical Data

Acreage of property 1.10 acres

UTM References (place additional UTM references on a continuation sheet).

	Zone	Easting	Northing		Zone	Easting	Northing
1.	15	253390	4507580	3.			
2.				4.			

## Verbal Boundary Description

(Describe the boundaries of the property on a continuation sheet.)

## Boundary Justification

(Explain why the boundaries were selected on a continuation sheet.)

# 11. Form Prepared By

name/title Sarah Davis McBride, Historic Preservation Specialist

organization Mead & Hunt, Inc.

date July 2000

street & number 6501 Watts Road

telephone 608.273.6380

city or town Madison

state WI zip code 53719-2700

## Additional Documentation

Submit the following items with the completed form:

### Continuation Sheets

#### Maps

A **USGS map** (7.5 or 15 minute series) indicating the property's location.

A **Sketch map** for historic districts and properties having large acreage or numerous resources.

#### Photographs

Representative **black and white photographs** of the property.

#### Additional items

(Check with the SHPO or FPO for any additional items.)

## Property Owner

(Complete this item at the request of the SHPO or FPO.)

name/title McCartney School District 17

street & number 5797 H Road

telephone 402.873.4381

city or town Nebraska City

state NE zip code 68410

**Paperwork Reduction Act Statement:** This information is being collected for applications to the National Register of Historic Places to nominate properties for listing or determined eligibility for listing, to list properties, and to amend existing listings. Response to this request is required to obtain a benefit in accordance with the National Historic Preservation Act, as amended, (15 USC 470 et seq.).

**Estimated Burden Statement:** Public reporting burden for this form is estimated to average 18.1 hours per response including the time for reviewing instructions, gathering and maintaining data, and completing and reviewing the form. Direct comments regarding this burden estimate or any aspect of this form to the chief, Administrative Services Division, National Park Service, P.O. Box 37127, Washington, DC 20013-7127; and the Office of Management and Budget, Paperwork Reduction Project (1024-0018), Washington, DC 20503.



United States Department of the Interior  
National Park Service

National Register of Historic Places  
Continuation Sheet

McCartney School District 17

Name of Property

Otoe County, Nebraska

County and State

Section 7 Page 1

**Introduction**

The McCartney School District 17 school was constructed in 1927 and is a one-story, brick, utilitarian building.<sup>1</sup> The school faces south and is sited on about a 1-acre parcel at the corner of Steamwagon Road and CTH 59. In a rural setting of relatively open flat land, the property includes a flag pole; a basketball hoop; and school playground equipment consisting of a merry-go-round, an eagle's nest slide, a swing set, and two teeter-totters. Around the property are remnants of previous structures, including an old water pump, the concrete remains of two privies, and the indent of a shed used to tie up ponies (see Photograph No. 1). A recently moved, non-contributing, one-room school building is found 10 feet behind the McCartney School near the north facade (see Photograph No. 2). The property is bordered on the north and west by double rows of mature trees. The school is approached from Steamwagon Road by a curved, gravel-and-dirt drive that widens near the front of the building for parking.

**Description**

The McCartney School is a simple front-gable, one-story building in a rectangular plan. The building is constructed of red brick laid in a running bond pattern. The school displays elementary ornamentation seen in two brick soldier courses visually separating the foundation, wall, and roofline. A stone name plate reading "McCartney School Dist. 17" framed by brick headers is located in the front gable. The McCartney School rests on a textured concrete foundation. The entrance, on the short side of the rectangular plan, faces south and two concrete steps lead to the wooden door entrance, which is surmounted by a rectangular glass transom. The entrance is sheltered by a wood-and-asphalt gabled portico supported by two metal poles. The gable displays a row of simple wooden-scalloped edging. The main facade (south-facing) features two, six-over-six, double-hung, sash windows in their original wooden frames. The windows are covered in metal screening (see Photograph No. 3).

Four of the same windows are found on each side of the building – the east and west facades – and are spaced evenly on both sides. The two rows of side windows are set about 5 feet back from the front of the building. Above the windows are broad, over-hanging eaves that provide protection from the elements. The gable roof is constructed of wood and covered in asphalt shingle, displaying a brick interior chimney on the west facade (see Photograph No. 4).

The school's interior consists of one large rectangular room, featuring original oak wood flooring, a storage closet to the right of the entrance, and restrooms to the left of the entrance. At the back of the room is a raised stage area also with original flooring (see Photograph No. 5).

**Alterations**

Some minor alterations are evident in the interior. The room has imitation wood paneling, the ceiling has been dropped, and fluorescent lighting has been added. On the exterior, crack lines can be seen on the south facade (see Photograph No. 3). These are repair lines from a tornado that struck the McCartney School on June 2, 1949.<sup>2</sup> The tornado caused the front wall to collapse while tearing off the school's roof. The school was repaired with much of the original brick and remains essentially the same in design since its date of construction in 1927. This damage does not effect the building's ability to convey the architectural elements of a one-room rural school in the local area.

<sup>1</sup> District 17 School Teacher Roster, McCartney School District 17, n.d., Site File, Nebraska State Historic Preservation Office.

<sup>2</sup> "District 17 is 113 Years Young on May 30, 1982." Site File, Nebraska State Historic Preservation Office.



United States Department of the Interior  
National Park Service

National Register of Historic Places  
Continuation Sheet

McCartney School District 17

Name of Property

Otoe County, Nebraska

County and State

Section 8 Page 1

Statement of Significance

The McCartney School District 17, built in 1927, is historically significant at the local level under *Criterion A* in the area of Education. It is an excellent representative example of the most common pattern of rural education that has persisted on the Nebraska landscape since the nineteenth century. The McCartney School has operated as a rural school for 73 years and the building tangibly illustrates the enduring capacity of the traditional one-room schoolhouse to successfully educate the young. The McCartney School is being nominated in conjunction with the Multiple Property Document "Historic and Architectural School Buildings in Nebraska." Please refer to this document for a contextual history of education in the state.

*History of the McCartney School<sup>3</sup>*

The McCartney School District 17 has been providing education for local children in the rural area just west of Nebraska City since 1869. Although the existing school building dates from 1927, the first McCartney School was built at this location 2 years after Nebraska achieved statehood. The McCartney School was constructed on land originally owned by Andrew McCartney of Indianola, Iowa, and purchased by David Beasley, M.C. McCartney, and Henry Kregel, trustees of School District No. 2 in the Belmont Precinct. The trustees purchased the property, consisting of 1 acre and 56 rods, for \$100 dollars. In the land transaction, the parties agreed that the property was to be used for school purposes only.

In the first year of operation, H.C. McCartney served as the sole member of the school board in which he acted as the director, moderator, and treasurer, and continued in this capacity until 1876. W.M. Coleman was the first teacher at the McCartney School and, according to the school census, taught children from 14 area farming families between the years of 1869 through 1871. The record, taken in the spring, also indicates that as many as 50 children from the ages of 5 through 21 lived in the district and many were associated with the school either as students or as employees.

During the early years of operation, students attended class 70 to 120 days a year, generally during the fall and winter months when their labor was not essential to the seasonal activities of the family farm. In these cold months, wood, coal, and corn cobs were burned to heat the school building and this fuel was stored in a shed in the back of the school. By 1907, a 9-month academic school year had been implemented in the school system, which had an impact on the family farm. Until at least 1930, local rural children either walked, arrived in a pony cart, or rode their ponies or other animals to school, and many families built pony sheds to shelter the animals while the children attended school. As many as 35 children attended the McCartney School at one time.

Two major disasters hit the McCartney School during its long history. On the night of May 27, 1927, the red brick school burned, resulting in an estimated loss of \$2,000 to \$2,500. The cause of the fire was never determined, but the building had to be replaced. The records indicate that 25 students were enrolled at the time and Addie Chandler was the teacher. No one was hurt in the blaze. The chronological list of McCartney School teachers reveal that in spite of the spring fire, the school calendar continued in the fall, providing evidence that the present school was built in the summer of 1927 and sited at the location of the original school.

For 22 years, the present school, also of red brick, served the local community until June 2, 1949, when a tornado struck the school, causing considerable damage. A photograph dating from 1949 shows the roof of the building torn off and the front wall collapsed. The school was repaired with much of the original brick and the building appears much as it did when originally built. Again, the chronological list of teachers at the McCartney School indicates that the school was in session the following fall. Evidently, the school was repaired over the summer of 1949. In addition to the repairs, interior improvements have been made over the years, including electricity, natural gas, and water service. Restrooms have been added to the school and the building is protected with storm windows and doors.

<sup>3</sup> The History of the McCartney School is based upon two articles, "District 17 is 113 Years Young on May 30, 1982," and "McCartney District 17 School," n.d., Site File, Nebraska State Historic Preservation Office.



United States Department of the Interior  
National Park Service

National Register of Historic Places  
Continuation Sheet

McCartney School District 17

Name of Property

Otoe County, Nebraska

County and State

Section 8 Page 2

Today, the McCartney School is still in operation and serving the local community. Nine students attend the school and are taught music and art in the building, while the rest of the school subjects are taught in the non-contributing, one-room schoolhouse located at the rear of the McCartney School. A fixture in the local community, the McCartney School has been educating children for over 131 years.

*Historical Significance*

The McCartney School is historically significant at the local level under *Criterion A*. It is an excellent representative example of a pattern of rural education that has persisted through the twentieth century despite many changes in educational policy and reform. Visually, the McCartney School with its brick construction, long gable roof, rectangular plan, and rural setting, immediately conveys the architectural elements of a one-room schoolhouse and would be recognizable to anyone living in the local area during the nineteenth and twentieth centuries.

The McCartney School is a very good representative of a local rural school because it is built of red brick and, like most rural schools, was constructed by local residents with available materials. The school was built of materials from a nearby brickyard in Nebraska City.<sup>4</sup> Typical of the "one-room" schoolhouse, the McCartney School was constructed in a rectangular plan and of a size that could accommodate the needs of at least 35 students while addressing the auditory and visual needs of teaching in a large classroom. The school's window placement is like other one-room schools where opposite windows were located on the long sides of the building to use the optimum amount of sunlight for better vision and ventilation. The McCartney School also features a single door central entrance located on the south facade, which was the most common entrance placement in rural schools.

By the early twentieth century, educational policy had changed regarding rural schools and this would eventually reduce the number of rural schools built on the Nebraska landscape. In 1903 Nebraska, following the national trend towards school consolidation, passed legislation to use public funds for the transportation of students to central schools and to establish procedures for school consolidation. Although only 2 miles from Nebraska City, the McCartney School did not consolidate with the city schools and students provided their own transportation to school.<sup>5</sup>

During the period of significance, the McCartney School's curriculum remained based in the traditional rural school curriculum of reading, writing, and arithmetic, and although the school has restrooms and a raised stage, the school's interior design has remained basically the same since one-room rural schools began appearing on the Nebraska landscape in the nineteenth century.

Three, one-room rural schools are known to remain in Otoe County, two of which are brick. The McCartney School retains better integrity of design than the other two schools, and because the first McCartney School was built here in 1869, the property has a much longer history.<sup>6</sup>

<sup>4</sup> Interview with Kelly Ballue, teacher, McCartney School District 17, May 7, 2000.

<sup>5</sup> Mead & Hunt, Multiple Property National Register of Historic Places Listing: "Educational Development and Historic School Buildings in Nebraska," draft, May 2000.

<sup>6</sup> Interview with Kelly Ballue, teacher, McCartney School District 17, May 7, 2000.



United States Department of the Interior  
National Park Service

National Register of Historic Places  
Continuation Sheet

McCartney School District 17

Name of Property

Otoe County, Nebraska

County and State

Section 9, 10, Photos Page 1

**Bibliography**

Anderson, William T. "Development of the Common Schools." Wisconsin Blue Book: 1923, Madison: State Printing Board, 1923.

"District 17 is 113 Years Young on May 30, 1982," Site File, Nebraska State Historic Preservation Office.

"District 17 School Teacher Roster." The McCartney School District 17. Site File, Nebraska State Historic Preservation Office, n.d.

Gottfried, Herbert and Jan Jennings. American Vernacular Design: 1870-1940. Ames: Iowa. Iowa State University Press, 1988.

Mead & Hunt, Inc., Multiple Property National Register of Historic Places Listing: "Educational Development and Historic School Buildings in Nebraska," draft, May 2000.

"McCartney District 17 School," n.d. Site File, Nebraska State Historic Preservation Office.

**Verbal Boundary Description**

The McCartney School District 17 is located at S. 197' of E. 198' E. ½ SE ¼ 1.3 acres, Belmont, 2313.

**Verbal Boundary Justification**

The boundaries of the McCartney School District 17 enclose all the resources historically associated with it, and coincide with the legal boundaries of the parcel on which it sits.

**Photographs**

*Photograph 1 of 5*

McCartney School District 17

City of Nebraska, Otoe County, Nebraska

Negative on file in Nebraska State Historical Society

View of west-facing facade, looking northeast.

For the photographs listed below, the information is the same as above, except as noted:

*Photograph 2 of 5*

View of east-facing facade, looking northwest.

*Photograph 3 of 5*

View of south-facing (front) facade, looking north.

*Photograph 4 of 5*

View of west-facing facade, looking east.

*Photograph 5 of 5*

Detail of interior, looking north.







McCartney School District 17  
Otoe Co., NE  
Photo 1 of 5







McCartney School District 17  
Otoe Co., NE  
Photo 2 of 5







McCartney School District 17

Otoe Co., NE

Photo 3 of 5







McCarty School District 17  
Otoe Co., NE  
Photo 4 of 5

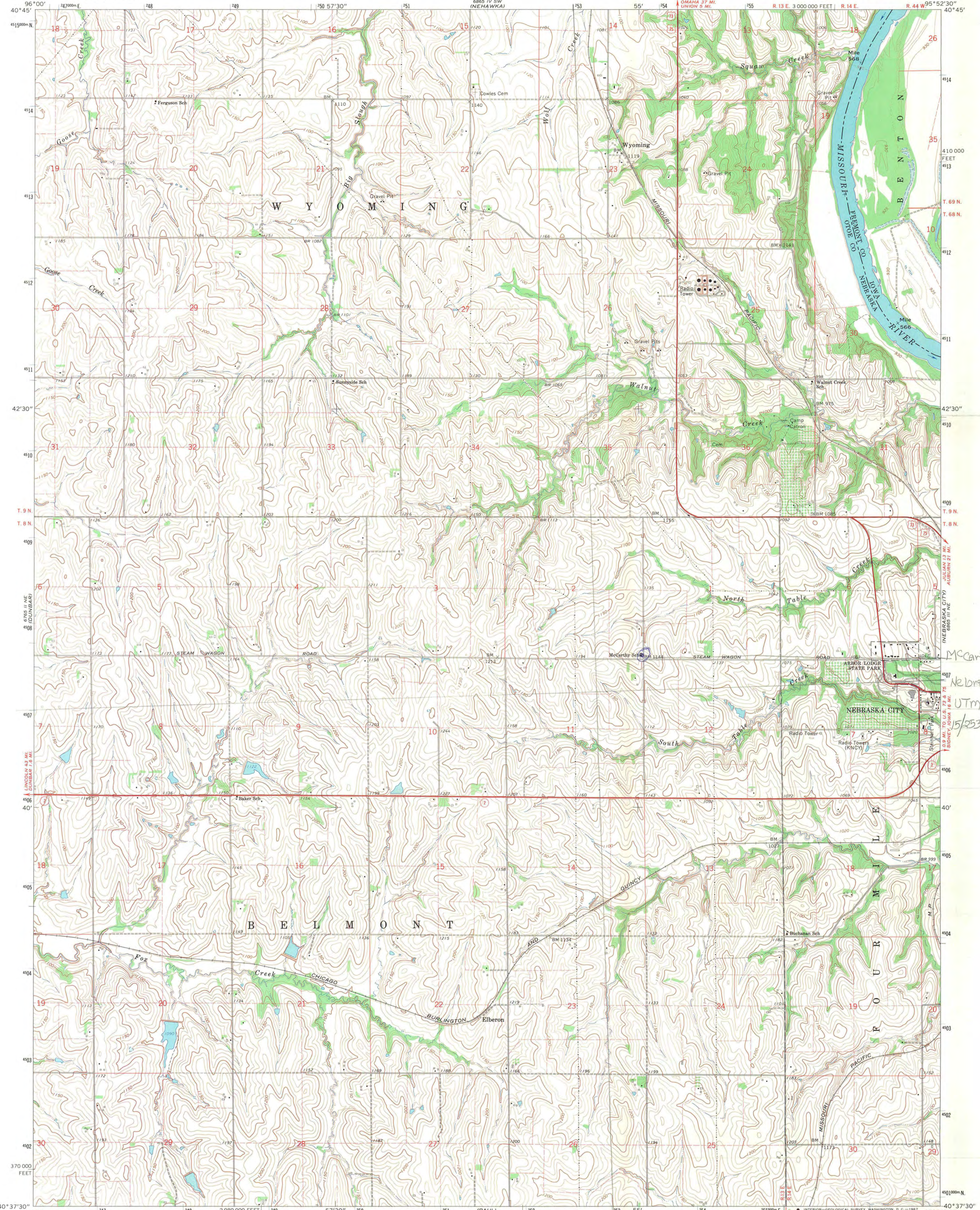






McCartney School District 17  
Otoe Co., NE  
Photo 5 of 5







UNITED STATES DEPARTMENT OF THE INTERIOR  
NATIONAL PARK SERVICE

NATIONAL REGISTER OF HISTORIC PLACES  
EVALUATION/RETURN SHEET

REQUESTED ACTION: NOMINATION

PROPERTY McCartney School District 17  
NAME:

MULTIPLE School Buildings in Nebraska MPS  
NAME:

STATE & COUNTY: NEBRASKA, Otoe

DATE RECEIVED: 10/16/00 DATE OF PENDING LIST: 10/30/00  
DATE OF 16TH DAY: 11/15/00 DATE OF 45TH DAY: 11/30/00  
DATE OF WEEKLY LIST:

REFERENCE NUMBER: 00001379

REASONS FOR REVIEW:

APPEAL: N DATA PROBLEM: N LANDSCAPE: N LESS THAN 50 YEARS: N  
OTHER: N PDIL: N PERIOD: N PROGRAM UNAPPROVED: N  
REQUEST: N SAMPLE: N SLR DRAFT: N NATIONAL: N

COMMENT WAIVER: N

☒ ACCEPT ☐ RETURN ☐ REJECT 11-15-00 DATE

ABSTRACT/SUMMARY COMMENTS:

Entered in the  
National Register

RECOM./CRITERIA\_\_\_\_\_

REVIEWER\_\_\_\_\_ DISCIPLINE\_\_\_\_\_

TELEPHONE\_\_\_\_\_ DATE\_\_\_\_\_

DOCUMENTATION see attached comments Y/N see attached SLR Y/N





NEBRASKA STATE HISTORICAL SOCIETY

1500 R STREET, P.O. BOX 82554, LINCOLN, NE 68501-2554  
(402) 471-3270 Fax: (402) 471-3100 1-800-833-6747 [www.nebraskahistory.org](http://www.nebraskahistory.org)



October 10, 2000

Ms. Carol Shull  
US Department of the Interior  
NPS—Cultural Resources  
NRHP, Suite 400 NC  
1849 C Street NW  
Washington, DC 20240

RE: **McCartney School District 17**  
Otoe County, Nebraska

Dear Ms. Shull:

Please find enclosed the National Register of Historic Places nomination form for the above property. This nomination has met all notification and other requirements as established in 36 CFR 60.

If you have any questions concerning this nomination, please let me know.

Sincerely,

L. Robert Puschendorf  
Deputy State Historic Preservation Officer

Enclosure





*Preserving the past. Building the future.*

January 30, 2019

Jim Gabbert  
NPS-National Register of Historic Places  
1849 C Street, NW  
Mail Stop 7228  
Washington, DC 20240

FEB 1 - 2019

Re: Removal of Ten Properties from the National Register of Historic Places, Multiple Counties, NE

Dear Mr. Gabbert,

Enclosed is appropriate documentation to remove ten properties located within the state of Nebraska from the National Register of Historic Places. The enclosed contents are as follows:

- The signed Continuation Sheet documenting the current condition of each of the National Register-listed properties for which removal is requested;
- One (1) archival disc with the true and correct copy of the Continuation Sheets requesting the removal of ten properties from the National Register of Historic Places in PDF format; and
- Two (2) archival discs with photographs depicting the current conditions ten National Register-listed properties in Nebraska to be removed from the National Register of Historic Places.

The properties being requested to be removed from the National Register of Historic Places are:

- Bridge, Antelope County, NPS #92000725
- Ponca Creek Bridge, Boyd County, NPS #92000769
- Adamson Bridge, Cherry County, NPS #92000749
- Algernon S. Paddock House, Gage County, NPS #73001062
- Burwell Bridge, Garfield County, NPS #92000715
- Keim Stone Arch Bridge, Johnson County, NPS #92000710
- Pospeshil Theatre, Knox County, NPS #88000935
- Beal Slough Bridge, Lancaster County, NPS #92000744
- McCartney School, Otoe County, NPS #00001379
- North Omaha Creek Bridge, Thurston County, NPS #92000727

If you have any questions regarding the submitted materials, feel free to contact me at the phone number or email address below.

Sincerely,

A handwritten signature in black ink, appearing to read 'David L. Calcutt'.

1500 R Street  
Lincoln, NE 68508-1651  
P: 402.471.3270  
P: 800.833.6747  
F: 402.471.3100  
history.nebraska.gov



UNITED STATES DEPARTMENT OF THE INTERIOR  
NATIONAL PARK SERVICE

NATIONAL REGISTER OF HISTORIC PLACES  
EVALUATION/RETURN SHEET

Requested Action: Removal

Property Name: McCartney School District 17

Multiple Name: School Buildings in Nebraska MPS

State & County: NEBRASKA, Otoe

Date Received:  
2/14/2019

Date of Pending List:  
3/7/2019

Date of 16th Day:  
3/22/2019

Date of 45th Day:  
4/1/2019

Date of Weekly List:

Reference number: OT00001379

Nominator:

Reason For Review:

X Accept

       Return

       Reject

3/25/2019 Date

Abstract/Summary  
Comments: Building demolished

Recommendation/  
Criteria Accept recommendation / Remove

Reviewer Jim Gabbert

Discipline Historian

Telephone (202)354-2275

Date                     

DOCUMENTATION: see attached comments : No see attached SLR : No

If a nomination is returned to the nomination authority, the nomination is no longer under consideration by the National Park Service.