

United States Department of the Interior
National Park Service

National Register of Historic Places
Inventory—Nomination Form



Continuation sheet

Item number

S-1113

Page 1

11. S-1113:

Property Name: DRAPER HOUSE

Location & Verbal Boundary Description:

Located at 200 Lakeview Avenue on the south side and at the southeast corner of Lakeview Avenue and Jefferson Avenue. The lot is bounded on the north by Jefferson Street, on the west by Lakeview Avenue, on the east by William Street, and on the south by an occupied lot. The total acreage is 1.28 acres.

Owner: Thomas H. and Rachel G. Draper, 200 Lakeview Avenue, Milford, DE. (obtained 12/9/81) at Sussex County Board of Assessments).

Property Description:

The Draper House is a 2-story, 5-bay, center-hall-plan, frame house on a raised brick foundation. It exhibits a blend of a number of architectural forms, including its original construction appearance as a Victorian Gothic building and its remodelling in the early-twentieth century with elements of Queen Anne and Neo-Classic building traditions. The hip roof has a box cornice with modillions and is pierced with a single dormer on each face with the front face having two dormers and a large massive corner between. Each corner has a full pediment and casement window with 20 lights. The middle two corners are further subdivided into filigree panels. The center dormer has a box gable cornice with partial returns, quoins on the side, and a cut shingle face with a rounded sash window. The left corner has a telescoping turret with cone roof and casement windows at the third floor and one-over-one sash windows at the second floor. The second floor face has a projecting bay with a Palladian window. The first floor also has a similar projection with entrance, filigree sidelights, and filigree transom. The turret also continues to the first floor. A smaller 2-story truncated turret is located on the right rear corner. It has a flat roof and a cut shingle covering. There is a full three-sided porch with a shadow curve at the left turret and for the center bay projection. The whole is supported by Ionic columns. The porch has a glass-enclosed section on the right side. There are two chimneys - one on the interior left block and the other on the exterior rear of the truncated tower. There is a 2-story rear wing with two 1-story additions.

Historical Background:

The house was built around 1870 and appears on the 1885 Bailey and Company Pictorial Atlas of Milford. At that time, it was a 5-bay, center-hall, 2-story building with a 2-story rear wing and Gothic details. It was remodelled around 1910 into its present appearance. It has been mostly used as a residence, except for a period of time from 1948 to 1953, when it was owned by the Milford Hospital and used by them as housing for nurses.

United States Department of the Interior
National Park Service

**National Register of Historic Places
Inventory—Nomination Form**



Continuation sheet

Item number

S-1113

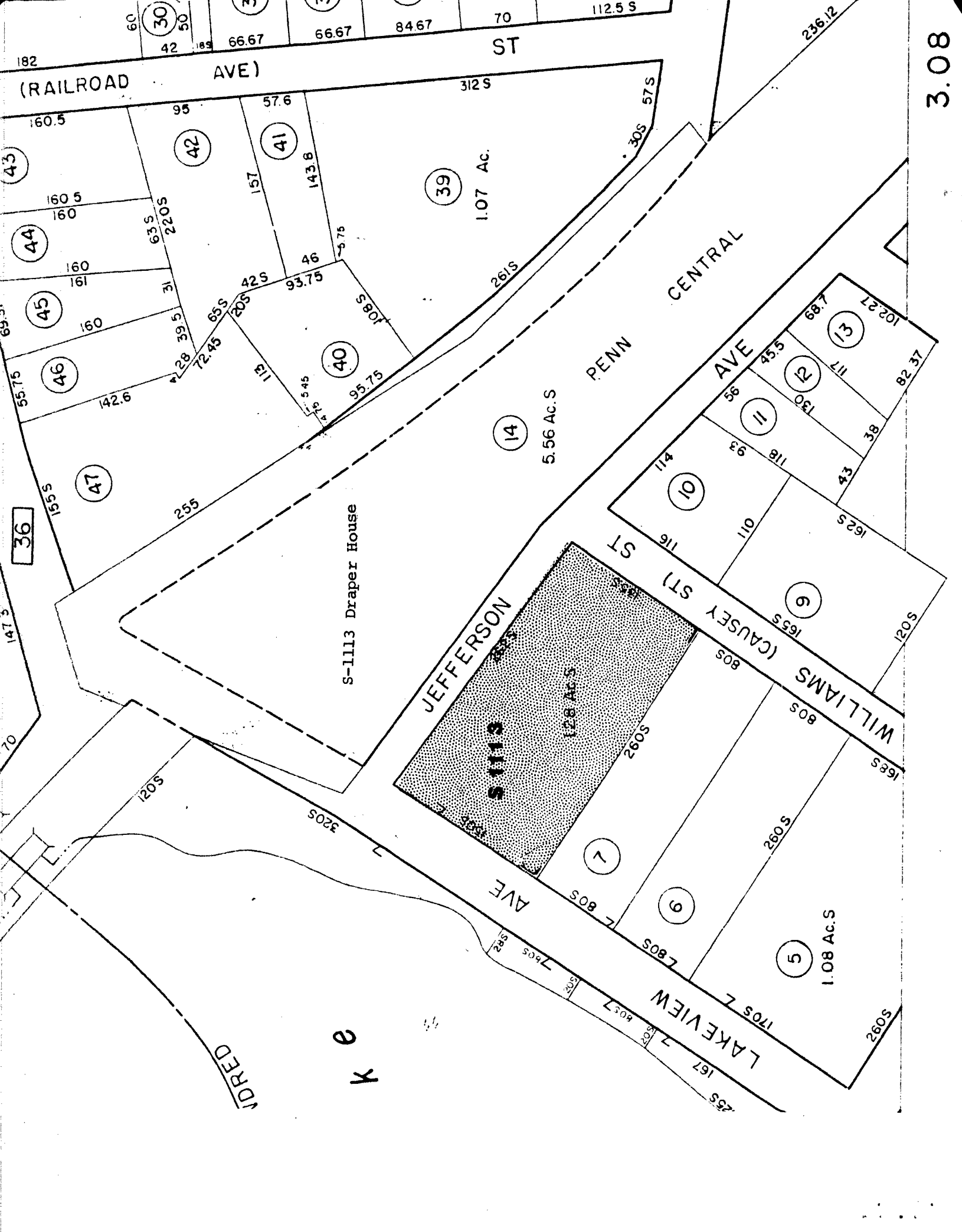
Page 2

DRAPER HOUSE CONTINUED

Property Significance:

One of the most striking of Milford's houses, the Draper House, is an excellent example of the growth and economic development of Milford and is eligible for the National Register under Criterion C. After the Civil War was over, Milford experienced a boom as the result of increased agricultural production and as a result of an increase in shipbuilding activity. The house, judging from the Bailey's Atlas view, was built in the most modern style and was built in a heretofore undeveloped area.

At the turn of the century, Milford experienced another boom period and the Draper House was again in the forefront of architectural style with its Neo-Classic elements. Because of its remodeling, the Draper House represents a visual image of the growth and prosperity of the town of Milford, and because of its location, sits beside the two strengths of Milford - the Mispillion River and the Milford Railroad Station.



(RAILROAD AVE)

ST

312 S

236.12

182

60
30
50
42 189

66.67

66.67

84.67

70

112.5 S

160.5

98

57.6

39

1.07 Ac.

30S
57S

43

42

41

160.5

63 S
220 S

157

143.8

44

160

60

46

93.75

45

160

31

42 S

108 S

46

160

28 39.5 31

65 S
20 S

40

95.75

26 S

PENN

CENTRAL

36

142.6

72.45

113

95.75

14

5.56 Ac. S

PENN

AVE

68.7

102.27

147.3

155 S

255

113

95.75

114

110

116

118

110

117

130

117

82.37

70

155 S

255

113

95.75

114

110

116

118

110

117

130

117

82.37

147.3

155 S

255

113

95.75

114

110

116

118

110

117

130

117

82.37

147.3

155 S

255

113

95.75

114

110

116

118

110

117

130

117

82.37

147.3

155 S

255

113

95.75

114

110

116

118

110

117

130

117

82.37

147.3

155 S

255

113

95.75

114

110

116

118

110

117

130

117

82.37

k e

3.08

S-1113 Draper House

JEFFERSON

S 1113

12.8 Ac. S

7

9

5

1.08 Ac. S

6

11

10

12

13

WORED

LAKEVIEW

1705 S

260 S

80 S

80 S

165 S

116

93

56

45.5

102.27

82.37

70

147.3

147.3

147.3

147.3

147.3

147.3

147.3

147.3