

United States Department of the Interior
National Park Service

National Register of Historic Places
Registration Form

This form is for use in nominating or requesting determinations for individual properties and districts. See instructions in *How to Complete the National Register of Historic Places Registration Form* (National Register Bulletin 16A) Complete each item by marking "x" in the appropriate box or by entering the information requested. If an item does not apply to the property being documented, enter "N/A" for "not applicable." For functions, architectural classification, materials, and areas of significance, enter only categories and subcategories from the instructions. Place additional entries and narrative items on continuation sheets (NPS Form 10-9000a). Use a typewriter, word processor, or computer, to complete all items.

1. Name of Property

Historic name Riley County Courthouse

Other name/site number _____

2. Location

Street & number 100 Courthouse Plaza not for publication

City or town Manhattan vicinity

State Kansas Code KS County Riley Code 161 Zip code 66502

3. State/Federal Agency Certification

As the designated authority under the National Historic Preservation Act, as amended, I hereby certify that this nomination request for determination of eligibility meets the documentation standards for registering properties in the National Register of Historic Places and meets the procedural and professional requirements set forth in 36 CFR Part 60. In my opinion, the property meets does not meet the National Register criteria. I recommend that this property be considered significant nationally statewide locally. (See continuation sheet for additional comments.)

Christy Davis 10/6/05
Signature of certifying official/Title Date
Kansas State Historical Society

State or Federal agency and bureau

In my opinion, the property meets does not meet the National Register criteria. (See continuation sheet for additional Comments.)

Signature of commenting official /Title Date

State or Federal agency and bureau

4. National Park Service Certification

I hereby certify that the property is

- entered in the National Register. See continuation sheet.
- determined eligible for the National Register See continuation sheet.
- determined not eligible for the National Register
- removed from the National Register
- other, (explain:)

Edson H. Beall 11.15.05
Signature of the Keeper Date of Action

Riley County Courthouse
Name of property

Riley County, Kansas
County and State

5. Classification

Ownership of Property
(Check as many boxes as apply)

- private
- public-local
- public-State
- public-Federal

Category of Property
(Check only one box)

- building(s)
- district
- site
- structure
- object

Number of Resources within Property
(Do not include previously listed resources in the count.)

Contributing	Noncontributing	
1		buildings
		sites
		structures
		objects
1	0	total

Name of related multiple property listing
(Enter "N/A" if property is not part of a multiple property listing.)
Historic County Courthouses of Kansas

Number of contributing resources previously listed in the National Register
0

6. Function or Use

Historic Functions
(Enter Categories from instructions)

GOVERNMENT: Courthouse

Current Functions
(Enter categories from instructions)

Government:: Courthouse

7. Description

Architectural Classification
(Enter categories from instructions)
Late Victorian: Romanesque

Materials
(Enter categories from instructions)

Foundation: Stone

Walls: Stone

Roof: Synthetic

Other: Wood Cornice and Dormers

Narrative Description
(Describe the historic and current condition of the property on one or more continuation sheets.)

Riley County Courthouse
Name of Property

Riley County, Kansas
County and State

8. Statement of Significance

Applicable National Register Criteria

(Mark "X" in one or more boxes for the criteria qualifying the property for National Register)

- A** Property is associated with events that have made a significant contribution to the broad patterns of our history
- B** Property is associated with the lives of persons significant in our past.
- C** Property embodies the distinctive characteristics of a type, period, or method of construction or represents the work of a master, or possesses high artistic values, or represents a significant and distinguishable entity whose components lack individual distinction.
- D** Property has yielded, or likely to yield, information important in prehistory or history.

Criteria Considerations

(Mark "x" in all the boxes that apply.)

Property is:

- A** owned by a religious institution or used for religious purposes.
- B** removed from its original location.
- C** a birthplace or grave.
- D** a cemetery.
- E** a reconstructed building, object, or structure.
- F** a commemorative property.
- G** less than 50 years of age or achieved significance within the past 50 years

Narrative Statement of Significance

(Explain the significance of the property on one or more continuation sheets.)

Areas of Significance

(Enter categories from instructions)

ARCHITECTURE

POLITICS/GOVERNMENT

Period of Significance

1905 - 1955

Significant Dates

1905

Significant Person

(Complete if Criterion B is marked above)

Cultural Affiliation

Architect/Builder

J.C. HOLLAND AND F.C. SQUIRES - ARCHITECTS

J.B. BETTS JR. - GENERAL CONTRACTOR

9. Major Bibliographical References

Bibliography

(Cite the books, articles, and other sources used in preparing this form on one or more continuation sheets.)

Previous documentation on file (NPS):

- preliminary determination of individual listing (36 CFR 67) has been requested
- Previously listed in the National Register
- previously determined eligible by the National Register
- designated a National Historic Landmark
- recorded by Historic American Buildings Survey # _____
- recorded by Historic American Engineering Record # _____

Primary location of additional data:

- State Historic Preservation Office
- Other State agency
- Federal agency
- Local government
- University
- Other

Name of repository:

Riley County Historical Society and Museum

United States Department of the Interior
National Park Service

National Register of Historic Places
Continuation Sheet

Historic County Courthouses of Kansas
Riley County Courthouse
Manhattan, Kansas

Section: 7 Page: 5

Narrative Description¹

The Riley County Courthouse was constructed in 1905-1906 at the west end of the Manhattan central business district. The Courthouse is identical in design to three other existing County Courthouses designed by Holland & Squires between 1905 – 1907 (Marion, Osborne, and Thomas Counties). Each is a four-story, Richardsonian Romanesque style structure with ten bays on the primary and rear facades, and six bays on the side facades. Arches on squat columns define the primary entrances. The four central bays are recessed on the third floor of the primary facade to form a balcony over the main entrance. The two central bays rise to form a clock tower. The Courthouse has an intersecting hipped roof that features six pedimented gabled wall dormers (one on each of the side facades and two on the front and rear facades). The Riley County Courthouse retains all of these defining features and is an excellent example of the Richardsonian Romanesque style Courthouses designed by J.C. Holland and Frank C. Squires.

Site

The Riley County Courthouse sits on lots 202, 203, and 204 Ward 2, which were donated by Adelia Higinbotham in 1903, in memory of her husband George Higinbotham, settling a controversy concerning where the Courthouse would be built.² The Courthouse, measuring approximately 100' x 75', sits on what was the northeast corner of Fifth Street and Poyntz Avenue, facing south on Poyntz Avenue (Manhattan's Main Street). [Figure 1 - Existing Site Plan] The Courthouse is located at the west end of Manhattan's downtown commercial district. East of the Courthouse is a block of commercial buildings including the Wareham Apartments, built between 1926 and 1929 as the Wareham Hotel, and the Wareham Opera House/Theater.³ A granite Armed Forces Memorial is in place at the southeast corner of the Courthouse Plaza, dedicated on Veterans Day 1992.⁴ The Carnegie Library (designed by W.W. Rose in 1904⁵) is located on the northwest corner of 5th and Poyntz, facing east, toward the Courthouse. This building functioned as the city library until a new library was built in 1969. At that time, the Carnegie Library was purchased by the County and converted to County offices.⁶ The building is listed on the National Register of Historic Places (1987) and is now known as the Courthouse Annex. In 1984 Fifth Street between Poyntz and Humboldt (one block north of Poyntz) was closed to form the Courthouse Plaza between the Courthouse and the Courthouse Annex. At that time, the arch from Central School was placed in the plaza and a new parking lot was constructed north of the Courthouse.⁷ East of the parking lot, at 417 Humboldt, directly behind the Wareham Apartments, is the Riley County Office Building. The Office Building was built in 1928 as a garage, ballroom and storage space for the Wareham Hotel.⁸ The second floor ballroom and the basement storage space were connected to the Wareham Hotel with an overhead walkway and an underground tunnel. The building at 417 Humboldt was renovated for County Offices in 1983. All non-Court offices were moved from the Courthouse to the new County Office Building in 1984.⁹ The Courthouse then underwent a major renovation project in 1984-86 designed to accommodate all county court functions. The last change in County Office facilities was in December 1997 when the County purchased the 1925 former telephone company building (one block to the east), for additional County Offices.¹⁰

Exterior

The Riley County Courthouse is generally rectangular in plan. The roof form is an intersecting hip, defined by a detinculated wood cornice with built-in gutters. The original slate roof was replaced in 1982 with synthetic shingles designed to resemble the appearance of slate. The front and rear facades are each ten bays wide but differ in their configuration. The front (south) facade is defined by a central tower. The center four bays are recessed on the third floor to form a balcony over the main entrance. The two center bays project slightly and extend above the roofline to form a large square tower with clocks on each face. The clock was manufactured by the E. Howard Company of Boston, Massachusetts. The four dials measured 6' 8" in diameter and were illuminated at the time of construction by electric light; the bell weighed 1200 pounds.¹¹ The tower has a pyramidal roof with pedimented gabled wall dormers on each side and square pillars extending from each corner. In 1999 the flag pole was re-installed on the top of the clock tower.¹² The recessed center bays on the front facade give the illusion of projecting end wings - the three end bays have an intersecting hip roof with central, stone, pedimented gabled wall dormers.

Like the front facade, the rear is ten bays wide but the center six bays project approximately eight feet; the rear has an intersecting gable roof with a large square chimney extending above the roofline. Like the front, stone pedimented gabled wall dormers are located over the end bays, above the wood cornice. The front and rear dormers are distinguished in their detailing. Both dormer styles have stone pilasters framing two double hung windows with separate transoms and a

**United States Department of the Interior
National Park Service**

**National Register of Historic Places
Continuation Sheet**

**Historic County Courthouses of Kansas
Riley County Courthouse
Manhattan, Kansas**

Section: 7 Page: 6

pedimented gable with subtle carved stone detailing. A narrow arch is recessed in the gable end of the dormers. On the rear dormers, the pilasters extend to form flying buttresses.

The east and west facades are nearly identical, distinguished only by the design of the central entrance. The two central bays project slightly and extend above the eaves to form a central stone, pedimented gabled wall dormer. At the third floor, small square stone chimneys flank two central windows and extend as pillars to frame the gabled dormer. A stone balustrade is located beneath the third floor windows between the chimneys. The dormer is comprised of a set of four narrow arched double-hung windows with a recessed arch over the windows, in the gable end. Two small wood, pedimented gabled dormers with round windows flank the central dormer.

The Courthouse is made of locally quarried rock-faced limestone with dressed limestone detailing. The coursing is a distinguishing characteristic with alternating wide and narrow courses. Smooth, dressed-stone belt-courses are located between the floors and at the cornice, delineating each level. Window styles also distinguish the four floors of the structure. Windows on the lower two floors are similar – simple double-hung windows with rock-faced lintels and integral sills. The ground floor (basement) windows are shorter than the 2nd floor. The third floor windows are generally double hung windows with an arched transom (on the front and sides), and the attic windows are unique to the dormer styles described above.¹³ Another distinguishing feature of the building is the carved stone detailing at the entrances, balcony and dormers. Although Holland & Squires' design called for the carvings, the design/detail was left to the local craftsmen, mason D.R. Penny. The carving designs are features that distinguish the various Holland & Squires courthouses.

There are two principal public entrances, on the front (south) facade and on the west facade. These entrances are defined by stone arches that spring from squat granite columns with stone Corinthian capitals. The primary entrances are above grade, entering the building on the second floor. The front (south) entrance features a balcony off the recessed central bays of the third floor, over the entrance. The entrance frontispiece is inscribed with "Riley County" with "1906" below, and rises to form the balcony railing. Ornate carvings decorate the column capitals, the frontispiece and balcony. Limestone kneewalls flank the stairs to the front entrance. The west entrance is accessed by an exterior side staircase with stairs that rise to a central landing at the arched opening to the second floor. A set of center steps go down, under the landing, to the ground floor. The entrances were modified in the 1984 remodeling; each of the public entrances has two sets of glass doors that form an airlock at the entrance. The original doors were a pair of single light over one panel wood doors. The glass doors with invisible frames used to create the airlock, are fairly obscure and do not detract from the original recessed arched openings. The east entrance is similar to the west but understated in its detailing and visibility. There is an arched stone surround with a pair of windows where the primary second floor entrance is on the south and west facades. However, there is access to the ground floor on the east. A ramp has been added for handicapped accessibility; the ramp begins on the north side of the building, turns and follows the east side of the building, rising to the ground floor entry. There is also a private ground level entrance on the rear of the building, used by law enforcement to transfer prisoners to a holding cell in the basement of the Courthouse.

Interior

The Riley County Courthouse was erected in 1906 a cost of \$50,000. At completion, the Courthouse boasted spacious offices for county officials, a large court room and rest rooms, large banquet halls, and storage rooms in the basement.¹⁴ The original floor plan configuration and hierarchy of space of the Riley County Courthouse was typical of early twentieth century Kansas courthouses. These courthouses had three or four floors with a hierarchy of functions located off a main corridor and accessed by two or more staircases. The ground floor, either at grade or slightly below, originally housed auxiliary operations such as the boiler room, facility's manager's office, toilets, and storage. The Riley County Courthouse also included living quarters (later used by a judge) and a community meeting room on the basement level. The finishes of this floor were typically not as elaborate as the upper, more public floors. The second floor, which was the most highly utilized floor, was generally elevated from grade level and approached by an exterior grand staircase. The first floor typically housed offices frequently used by the public such as the county clerk, register of deeds, county treasurer, and county commissioners' offices. The third floor traditionally housed the courtroom, judge's office, jury room, the sheriff, county attorney, and court clerk's offices. The courtroom was traditionally on the opposite side of the primary entrance, facing a grand staircase. The fourth floor/attic was usually not as obvious from the exterior as it was often part of the

**United States Department of the Interior
National Park Service**

**National Register of Historic Places
Continuation Sheet**

**Historic County Courthouses of Kansas
Riley County Courthouse
Manhattan, Kansas**

Section: 7 Page: 7

roofline. The attic floor was often used for storage or housed the jail, although new jail annexes soon replaced those functions. The Riley County Courthouse followed this basic configuration and hierarchy of spaces. There is no indication that the attic was ever used except for storage as Riley County had a separate jail when the Courthouse was built.

The uses of interior spaces have changed over the years in the Riley County Courthouse. The addition of the Carnegie Library as the Courthouse Annex in 1969, and the Riley County Office Building in 1984, led to changing uses with the Courthouse itself. The Courthouse retains all court-related functions while other County offices, not related to the court, are located in adjacent buildings. Despite these changes in use, the Courthouse retains a high degree of integrity, reflecting Holland and Squires' original design. The basic plan configuration and circulation patterns have been retained. Generally, court functions are located off the central east/west corridor and the large central lobby and two staircases on each side of the front entrance providing access to all floors, are maintained. Although the ground floor continues to house the mechanical room, the majority of the floor is used for support services. The ground floor includes offices for court services, family and child support, a prisoner holding area, an employee lounge, storage area and the law library and reading room in the southwest corner of the building. The second floor continues to house the main public services including the court administrator and clerk of the court. Two court rooms have been added on this level. The original probate judge's office in the southwest corner of the building was converted to small claims court room and the east half of the floor contains a court room, judges chambers, and supporting services. The original court room on the third floor has been subdivided into two courtrooms. Each half of the floor contains judge's chambers and supporting offices for each court room. The attic is used for storage. The 1984 remodeling primarily involved alteration of interior partition walls to support the reconfigured court rooms and rooms for support services.

Despite the changes in interior uses, significant interior features and finishes have been retained. The original interior finishes were typical of those found in Kansas Courthouse built in the early twentieth century. The staircases have oak railings and newel posts. The corridors feature mosaic floor tile and marble wainscoting with oak chair rails. All of these features are extant. Additionally, three of the four original fireplaces are in place in their original locations (one fireplace was relocated). The Courthouse was built with no less than five vaults. Some of these vaults were removed in the remodeling; however, the main County Treasurer's vault was retained, and although the vault was removed, the vault door was retained in the original Clerk of the Court's office on the third floor. The 1984 remodeling did result in removal of plaster walls and ceilings and most wood trim including baseboards and door casings. Replacement doors match the style of the original doors. Some original trim such as window frames and chair rails was retained.

Summary

The Riley County Courthouse has excellent architectural integrity despite the former alterations. The exterior of the Courthouse maintains a high degree of integrity, retaining the character-defining features representative of Holland and Squire's Romanesque design. There have been some exterior alterations over the past one hundred years: the original slate roof was replaced with synthetic shingles designed to resemble the appearance of slate; two skylights were installed on the north face of the hip roof; the clock in the tower has been restored and the flag pole re-installed on the top of the tower; and the doors and windows were replaced in the 1984 remodeling. The most drastic alterations involve the site and grounds. As the county has grown and offices expanded into adjacent buildings, 5th Street was closed to vehicular traffic one block north of Poyntz Avenue and the Courthouse Plaza was created between the Courthouse and Carnegie Library. The stone arch from Central School was placed in the Plaza and a War Memorial was constructed at the southeast corner of the site. Even with the creation of the plaza, the Courthouse retains its relationship to the sidewalk and Poyntz Avenue (Main Street) and its setting west of the traditional commercial block in downtown Manhattan.

The Courthouse continues to serve as the County's Courthouse, housing all court functions. The transfer of other County offices to adjacent buildings did result in major remodeling of the Courthouse. However, despite the changes in use of specific spaces, the original corridor configuration, public spaces, and circulation patterns have been maintained. Significant original features and finishes are also extant. The Courthouse retains sufficient character to reflect the original Holland and Squires' design and remains representative of typical early twentieth century Kansas courthouses.

United States Department of the Interior
National Park Service

National Register of Historic Places
Continuation Sheet

Historic County Courthouses of Kansas
Riley County Courthouse
Manhattan, Kansas

Section: 7 Page: 8

CHRONOLOGY OF RILEY COUNTY COURTHOUSE¹⁵

- Prior to 1867, Court was held in various places and County officials worked from their homes or in rented space.
- 1867 - Riley County Jail built in the "Courthouse Square" between 6th and Juliette and Pierre and Colorado. The Jail contained a Courtroom. Most County offices continued to be rented. (6/15/1867 & 7/6/1867 *Manhattan Independent*; 12/29/871 *Manhattan Nationalist*; 6/8/1883 *Manhattan Mercury*)
- 1880's - Newspaper editors advocate the building of a County Courthouse. (12/8/1886, 2/15/1888 *Manhattan Mercury*)
- 1890 - The City of Riley asserts that it will build a Courthouse if the County seat is moved to Riley. No Courthouse is built and the County seat is not moved. (2/26//1890 *Manhattan Mercury*)
- 1900 - Geary County builds a new Courthouse in Junction City a fact used to advocate a new Courthouse in Riley County. (6/6/1900 *Manhattan Mercury*)
- 1903 - Riley County votes to build a new Courthouse in June, with a margin of 297 votes. (5/29/1903 Riley Co. Commission Minutes) Just prior to the election, to settle a location controversy, Aldiea E. Higinbotham donates three lots on Poyntz Avenue in memory of her husband, George W. Higinbotham. (4/6/1903 & 4/10/1903 Riley County Commission Minutes; 4/15/1904 *Manhattan Mercury*) Mr. Higinbotham had a general store and founded the Blue Valley Bank with his brother, William (George later sold out to William and the bank later went under). Higinbotham owned a significant amount of land in Riley County.
- 1905 - The Riley County Commission proposed to spend no more than \$45,000.00 on the new building and hired architects Geo. R. Berlinghoff of Beatrice Nebraska and William W. Rose of Kansas City to submit a design (as advised by J.D. Walters, Kansas State Agricultural College Professor). In June 1905 the Berlinghoff/Rose went out for bid and came in substantially over budget. The Commission immediately dismissed Berlinghoff and Rose and hired Holland and Squires of Topeka, Kansas to submit a plan. (4/14/1905, 6/6/1905, 7/20/1905 & 7/21/1905 Riley County Commission Minutes; 6/14/1905, 7/7/1905 & 7/14/1905 *Manhattan Nationalist*).
Within one month the plans are accepted and within three months J.B. Betts of Topeka was hired as the general contract. James Stewart, Junction City was awarded the heating and plumbing contract and E.A. Jordon, the electrical wiring contract. S.M. Fox was hired as Superintendent of Construction. (8/31/1905 & 10/2/1905 Riley County Commission Minutes)
- 1906 - Building began immediately and the cornerstone was laid by local Masons in April 1906. (4/2/1906 Riley County Commission Minutes; 4/12/1906, 4/19/1906 & 4/26/1906 *Manhattan Republican*)
The tower clock was installed, funded by community donations. (2/15/1906 *Manhattan Republican*; 7/28/1906, 10/6/1906, 10/25/1906, 11/10/1906 & 5/4/1907 *Manhattan Industrialist*; 5/2/1907 *Manhattan Mercury*)
- 1907 - The Courthouse was completed during 1907; Court was officially established in the building February 1, 1907. Soon after completion, a telephone was installed. (1/14/1907 Riley County Commission Minutes)
In addition to the standard County Official offices, the Courthouse had a room for the local Grand Army of the Republic (G.A.R.). (12/13/1904 Riley County Commission Minutes)
- 1918 - Judge Morris moved into the Courthouse in order to be available to marry soldiers at Camp Funston day and night. (*The Riley County Chronicle*, May 21, 1918)
- 1927 - Thomas Williamson commissioned to design interior improvements to courtrooms, the Clerk of the Court's and Judge's offices for a total cost of \$7,000. (6/6/1927 Riley County Commission Minutes)
- 1928- The G.A.R. was asked to vacate their room and the space was given to the Farm Bureau for a Home Demonstration Agent. (3/5/1928 Riley County Commission Minutes)
- Late 1930's (1938 or 1939)- Courthouse clock had been in service about 30 years when a cable broke and a 400 pound weight went through the floor, breaking gears and pinions as it fell (9/21/1980 *Manhattan Mercury*) Due to financial times, it is not repaired. (9/25/1939 Riley County Commission Minutes)
- 1949 - Fluorescent lights installed in the Clerk's office (1st floor) by Acker Electric Co. The rest of the offices are converted to fluorescent lights in 1950 by Yeo and Trubey Electric Co. (6/13/1949 & 8/21/1950 Riley County Commission Minutes)
- 1949- Louis Van Dorp Sheet Metal and Roofing Company was hired to re-roof the Courthouse; he received a contract in the amount of \$3,600. Van Dorp was hired in 1950 to replace the gutters. (12/19/1949 & 4/10/1950 Riley County Commission Minutes)
- 1950 - County Court established May 1, 1950. (5/1/1950 Riley County Commission Minutes)
Commission hires Tower Clock Service to repair and electrify the tower clock. The clock operates again for the first time in over 10 years. (1/15/1951 Riley County Commission Minutes)
M.D. Temple hired for painting and re-decorating the interior of the Courthouse. 2/5/1951, 2/26/1951 & 4/14/1951 Riley County Commission Minutes)
- 1951- On July 13, the Kansas River flood reached its crest at more than 15 feet above flood stage. The Riley County Courthouse basement was filled with water. (7/13/1951 *Manhattan Tribune-News*)
- 1953 - Fred Lynch was hired to repair and decorate the basement of the Courthouse. (3/2/1953 Riley County Commission Minutes)
Dewey Lewis hired to build cabinets and shelves in the Probate Judge's office. (3/16/1953 Riley County Commission Minutes)
Jayhawk Roofing Company of Salina hired to repair the Courthouse roof. (7/6/1953 Riley County Commission Minutes)

United States Department of the Interior
National Park Service

National Register of Historic Places
Continuation Sheet

Historic County Courthouses of Kansas
Riley County Courthouse
Manhattan, Kansas

Section: 7 Page: 9

- 1955 – The focus of the Manhattan Centennial is a log cabin built on the grounds of the Riley County Courthouse. (1/10/1955 Riley County Commission Minutes)
- 1957 – Acker Electric hired for lighting and wiring three first floor office and the hall of the Courthouse. Contract later extended to include County Engineers and County Health offices. (12/23/1957 & 2/3/1958 Riley County Commission Minutes)
- 1961 – Air conditioning (25 window units) installed in the Courthouse. (6/30/1961 Riley County Commission Minutes)
- 1962 – Linoleum installed in the offices of the County Treasurer, Clerk, Addressograph, Register of Deeds, and Clerk of the District Court. (12/11/1961 Riley County Commission Minutes)
Toilets and Probate Judge's office are remodeled by architect F.O. Wolfenbarger. (12/3/1962 & 12/26/1962 Riley County Commission Minutes)
- 1964 – Linoleum installed in basement (3/9/1964 Riley County Commission Minutes)
Remodeling of the Courthouse included suspended ceilings, electrical work, courtroom woodwork, and interior decoration. (12/28/1964 Riley County Commission Minutes)
- 1965 – Draperies and carpet are installed in the Courtroom. (3/8/1965 & 4/19/1965 Riley County Commission Minutes)
Aluminum entrances are added to the building. (10/15/1965 Riley County Commission Minutes)
- 1966 - Courtroom is remodeled, and building is termite treated. (6/10/1966 & 7/29/1966 Riley County Commission Minutes)
Riley County Bar Association advocated a new Riley County Courthouse due to crowded conditions. (7/15/1966 Riley County Commission Minutes)
- 1967- Courthouse lawn is landscaped by Manhattan Nursery using plan made in 1966 by Darrell Westervelt, Blueville Nursery. (11/18/1966, 2/13/1967 & 2/24/1967 Riley County Commission Minutes)
County Commission purchases the Carnegie Library just west of the Courthouse. The Manhattan Public library is building a new building further west on Poyntz and will vacate the building in 1969. (3/21/1967 Riley County Commission Minutes)
- 1968 - New drinking fountain installed on the main floor. (12/16/1968 Riley County Commission Minutes)
- 1973 – Cosmetic renovation (including carpeting on main floor and removing old wooden venation blinds) and a new telephone system is installed. (7/30/1974, 8/24/1973 Riley County Commission Minutes)
- 1974 – The law library is remodeled using a grant of \$7,170 from the State of Kansas given to the Board of Trustees of the Riley County Law Library. (11/12/1974 Riley County Commission Minutes)
The tower clock is repaired (11/12/1974 Riley County Commission Minutes)
- 1977 - Roof repairs by Danker Roofing and Siding. (8/5/1977 Riley County Commission Minutes)
Parole Office vacated on 2nd floor and used as temporary employee lounge. (8/19/1977 Riley County Commission Minutes)
Storm windows are installed. (12/19/1977 Riley County Commission Minutes)
- 1978 – Begin comprehensive planning for Courthouse buildings and parking. The Wolf property (three lots with one house) adjacent to the Courthouse is purchased. (8/28/1978 Riley County Commission Minutes)
- 1978 – Heating and cooling system replaced, all individual air conditioning units are removed. Chimneys and stonework above the eaves are repaired. (11/6/1978 & 12/29/1978 Riley County Commission Minutes)
- 1979 – Courthouse Steps repaired (west side). (6/22/1979 Riley County Commission Minutes)
- 1980 – Tower Clock is restored through public donation and Commission support. (10/25/1979, 12/6/1979, 12/17/1979, 1/10/1980 & 6/2/1980 Riley County Commission Minutes; 9/21/1980 *Manhattan Mercury*)
Jury Room chairs refinished (6/16/1980 Riley County Commission Minutes)
County leases Wareham property east of the Courthouse parking lot. (9/4/1980 Riley County Commission Minutes)
- 1982 – Space Study for County building signed with Landmark Inc. Commission purchased the Music Village (Wareham) Building on Humboldt east of the Courthouse. The house on the Wolf property was cleared. (3/5/1981, 4/16/1981, 5/18/1981, 10/8/1981, 3/29/1982 & 7/16/1982 Riley County Commission Minutes)
- 1982-83 New roof installed on Courthouse; a heat pump was installed and window air conditioning units removed (Dan Hardin, County Engineer notes)
- 1983 – County Office Building (old Music Village building) is renovated into Riley County Offices.
- 1984 – Fifth Street is closed between Poyntz and Humboldt to form the Courthouse Plaza. The arch from Central School is placed in the Plaza and a new parking lot is constructed. (2/9/1984, 3/8/1984 Riley County Commission Minutes)
- 1984 – County Offices move to the new Riley County Office Building. (4/16/1984 & 5/17/1984 Riley County Commission Minutes)
- 1984-86 - Courthouse undergoes a major remodeling project. All offices, other than Court Offices, are removed from the Courthouse. The 3rd floor Courtroom is split into two courtrooms, the old clerk's office was converted into a courtroom, and the old Commission space became small claims court. Rededication and Open House held April 28, 1986. (Riley County Historical Museum and Dan Hardin, County Engineer notes)
- 1992 – The Riley County Armed Forces Memorial on the grounds of the Courthouse was dedicated.
- 1998 – Exterior work on Courthouse included painting windows and cleaning stone. (Dan Hardin, County Engineer notes)
- 1999 – The flag pole on the Courthouse tower was re-installed in memory of Thomas Hammes.
- 2002 – Panic locks installed on doors and metal detectors installed. (Dan Hardin, County Engineer notes)

**United States Department of the Interior
National Park Service**

**National Register of Historic Places
Continuation Sheet**

**Historic County Courthouses of Kansas
Riley County Courthouse
Manhattan, Kansas**

Section: 7 Page: 10

¹ Much of the narrative description is based largely on the National Register Nomination for the Osborne County Courthouse by Dana Cloud and Sally Schwenk of Historic Preservation Services, 2000.

² *Riley County Commission Minutes*, April 6 and 10, 1903.

³ *Manhattan Mercury*, December 10, 1926 and March 7, 1928; and *Riley County Commission Minutes*, May 3, 1926.

⁴ *Memorial Dedication Program*, November 11, 1992. Riley County Historical Museum.

⁵ *Manhattan Mercury*, January 27, 1904.

⁶ *Riley County Commission Minutes*, March 21, 1967.

⁷ *Riley County Commission Minutes*, February 9 and March 8, 1984.

⁸ *Manhattan Republic*, March 3 and June 21, 1928.

⁹ *Riley County Commission Minutes*, April 16 and May 17, 1984.

¹⁰ *Riley County Commission Minutes*, December 1, 1997.

¹¹ *Manhattan Industrialist*, November 10, 1906.

¹² Riley County Historical Museum records.

¹³ The original wood windows were replaced with new wood windows in the 1984 remodeling. The new windows do match the style of the original windows.

¹⁴ Semi-Centennial Anniversary Edition of the *Manhattan Nationalist*, June 16, 1910.

¹⁵ Chronology of the Riley County Courthouse was compiled by the Riley County Historical Society and Museum; the sources of individual data are noted.

**United States Department of the Interior
National Park Service**

**National Register of Historic Places
Continuation Sheet**

**Historic Public Schools of Kansas
Riley County Courthouse
Manhattan, Kansas**

Section: 8 Page: 11

Narrative Statement of Significance¹

The Riley County Courthouse, erected 1905-1906, is historically significant under National Register Criterion A in the area of **POLITICS/GOVERNMENT** and under Criterion C. in the area of **ARCHITECTURE** for its associations with the development of county courthouses in Kansas and with J.C. Holland, an influential Kansas architect who designed and supervised the construction of a significant number of Kansas county courthouses in the late nineteenth and early twentieth century. Local craftsmanship compliments the characteristic Holland Richardson Romanesque design. The historic significance of the Riley County Courthouse is based on its associations with the history and development of Kansas county courthouses that are documented in the Multiple Property Form, "**Historic County Courthouses of Kansas.**" In particular, the Riley County Courthouse has direct associations to the historic contexts established in the Multiple Property Form – "The Role of the Courthouse in Kansas Communities 1856 – 1950," "Twentieth Century Kansas County Courthouses and Their Changing Use: 1900 – 1950," and the "Architecture of Kansas Courthouses 1861 – 1950." The property's association with the evolution of Kansas County Courthouses and their design date to its construction in 1905 – 1906 and continues to 1955, the 50- year cutoff date for determining eligibility of National Register properties. This property reflects typical courthouse plans and Richardsonian Romanesque designs found in Kansas in the late nineteenth and early twentieth century. In addition to the property's retention of association and location, it has a high degree of architectural integrity and is a representative example of its property type. It exemplifies the work of a master courthouse architect noted for his Kansas courthouse designs. The property type and larger historic contexts relating to the significance of the Riley County Courthouse are fully documented in the Multiple Property Form. The following commentary expands upon these larger contextual themes as they specifically relate to the Riley County Courthouse and documents the property's significance.

Background

Riley County is located in north east Kansas, in the second tier of counties from the Nebraska state line. The County is approximately 40 miles from the Kansas – Nebraska state line and is west approximately 120 miles from the Kansas – Missouri state line. There are five incorporated towns in Riley County: Leonardville, Manhattan, Randolph, Riley, and Ogden. Tuttle Creek Reservoir is now the eastern boundary of the County. Fort Riley Military Reservation is in the southwest part of the county. Interstate 70 is along the south boundary, eight miles south from Manhattan. The first Riley County Seat was at Pawnee, a town established in 1855, the site of the first Kansas Territorial Legislature in July 1855. Pawnee was declared illegally established on the Fort Riley reservation and dismantled in late 1855 so the County Seat was moved to Ogden. In an election to determine the permanent county seat in October 1857 Ogden won, but the results were disputed and after a hearing, Manhattan was named the county seat of Riley County. An act of the Kansas legislature made the decision final in January 1858.

In 1867 the County built a jail in Manhattan, which also held a Courtroom.² County offices were in rented quarters downtown along the main street, Poyntz Avenue. The lack of dignity and convenience in such an arrangement, as well as the inadequacy and cost of some of the offices was brought up periodically by local newspaper editors.³ The fact that neighboring Geary County had built a new courthouse designed by J.C. Holland (1899/1900) and the City of Manhattan had built a new city hall (1903) was emphasized by editors pressing for a Riley County Courthouse.⁴ After securing the approval of the voters, and accepting three donated lots on, Poyntz Avenue (which averted a controversy concerning location) the Commission selected a Nebraska architect, George J. Berlinghoff and Kansas City architect, William W. Rose to design the building.⁵ W.W. Rose had designed the Carnegie Library in Manhattan, adjacent to the Courthouse.

When the bids to build that building came in significantly over budget, the Commission immediately dismissed Rose and Berlinghoff and contracted with well known Kansas courthouse architects J.C. Holland and F. C. Squires to provide a design.⁶ J.C. Holland had previously worked in Manhattan; he designed the National Bank at the SW corner of 4th & Poyntz and the Auditorium at Kansas State Agricultural College. In one month, the new plans had been approved and within three months, bids had been accepted for construction.⁷ The fast-paced schedule for the Courthouse design supports the fact that Holland's courthouse designs were based on one or two common plans used in multiple locations throughout the state. Four extant courthouses were designed by Holland and Squires in the period 1905 – 1907 (Riley,

**United States Department of the Interior
National Park Service**

**National Register of Historic Places
Continuation Sheet**

**Historic Public Schools of Kansas
Riley County Courthouse
Manhattan, Kansas**

Section: 8 Page: 12

Marion, Thomas, and Osborne Counties). The courthouses are identical in design, with the exception of red brick used for the Thomas County Courthouse rather than limestone.

The corner stone of the Riley County Courthouse was laid on April 19th, 1906 by the Lafayette Lodge No. 16, assisted by the other Masonic Lodges of Riley County.⁸ The building was completed at a cost of \$50,000 and was occupied by the Court in February of 1907.⁹

A community fundraising effort was mounted to secure the \$1,169.00 needed to install a clock manufactured by the E. Howard Clock Company of Boston, Massachusetts. Money for the clock was raised through events such as a street carnival and donations from individuals and businesses.¹⁰ The clock had four electrically illuminated dials, each about six and a half feet in diameter. The hours were marked by a 40 pound hammer striking a 1200 pound bell. In the late 1930's the bell fell and broke part of the clock mechanism. In September 1939 the Riley County Commission received a repair estimate from the Howard Clock Company, but felt the \$775.00 needed was too much given the depressed economy.¹¹ The Clock was unused until 1951 when the Commission had it repaired and electrified.¹² By 1979 the Clock was again out of operation. Local clock repairman David Seay and the Riley County Historical Society organized a fundraising campaign to raise \$8,000 to restore the clock to its original mechanical operation. David Seay completed the work in 1980 and has continued to care for the clock.¹³

The Riley County Courthouse not only provided a symbolic governmental presence in the community, it also housed offices that played a crucial role in the lives of citizens. The changing nature of these offices reflects the priorities and needs of the county and its citizens. When built, the Riley County Courthouse held the standard offices of Assessor, Attorney, Clerk, County Commissioners, Coroner, District Court Judge, Probate Judge, Register of Deeds, Sheriff, Superintendent of Public Instruction, Surveyor/Engineer, and Treasurer.¹⁴ When the Riley County Courthouse was built, it also included a room for the Grand Army of the Republic, an association of Union Army veterans. By 1928, most G.A.R. members had passed away, and the G.A.R. room was turned over to the Farm Bureau for the Home Demonstration Agent.¹⁵ Other offices that have come and gone in the building are the County Commissioner of the Poor, the Riley County Red Cross and Emergency Relief Office, the Rural Resettlement Administration, Farm Security Administration, Farmers Home Administration, the Welfare Department, the Health Department, Civil Defense Office, and State Parole Office.¹⁶ All reflected the changing needs and priorities of the community. For instance, Judge Morris moved into the Courthouse in May of 1918. He had so much business marrying soldiers that were at Camp Funston; the soldiers had so little leave time that the judge was marrying them day and night so he just moved into the Courthouse in order to be available at all hours.¹⁷

The most recent major renovation of the Courthouse in 1985-1986 to remove all county offices except court offices from the building reflects the growth and development of the county and its court system. The Courthouse has housed offices that played a variety of important roles in the lives of Riley Countians and indeed virtually all Riley County citizens, prominent and obscure, have had some connections to the Courthouse from the time of its construction to the present. In architecture, history and function, the Riley County Courthouse has played a central role in the life of the community.

Historic and Architectural Significance

The Courthouse is significant under Criterion A as an example of the second and third generation courthouses erected in a wave of new courthouse construction that occurred in the early twentieth century in Kansas. These buildings replaced aged and obsolete courthouse buildings erected in the state's earlier settlement period, or provided a home for offices previously scattered through out the community. Its level of physical and architectural integrity and the retention of its physical associations with the original site enable the Riley County Courthouse to convey its appearance and functions during the period of its construction. Its size and plan have direct associations with the evolution of local government needs met by the county courthouses in agrarian counties in Kansas during the early twentieth century.

The Riley County Courthouse is also significant under Criterion C as a representative example of the Kansas county courthouses designed by noted courthouse architect James C. Holland and his firm J.C. Holland and Squires, of Topeka,

**United States Department of the Interior
National Park Service**

**National Register of Historic Places
Continuation Sheet**

**Historic Public Schools of Kansas
Riley County Courthouse
Manhattan, Kansas**

Section: 8 Page: 13

Kansas. As documented in the Multiple Property Form, James C. Holland was one of the state's foremost designers of courthouses from 1899 – 1917. His work reflects the continued popularity in Kansas of the Romanesque Revival style in courthouse design in the early twentieth century and the shift, before World War I, to Classical Revival styles. *Legacies: Kansas' Older County Courthouses* identifies the following Courthouses designed by J.C. Holland and/or F.C. Squires.¹⁸

Geary County	1899 – 1900	J.C. Holland
Clay County	1900 – 1901	J.C. Holland
Mitchell County	1901 – 1902	J.C. Holland
Riley County	1905 – 1906	Holland and Squires
Marion County	1905 – 1907	Holland and Squires
Thomas County	1906 – 1907	Holland and Squires
Osborne County	1907 – 1908	Holland and Squires
Rice County	1910 – 1911	Holland and Son
Ness County	1917 – 1918	Holland and Son
Rooks County	1921 – 1924	Frank C. Squires
Decatur County	1926 – 1927	Squires and Ross

The preceding list documents existing courthouses. In addition, the courthouses in Shawnee (built 1894/95, demolished 1965), Coffey (built 1901/demolished c. 1963), and Harvey (built 1906/demolished c. 1965), were designed by Holland. J.C. Holland had already designed at least five similar Kansas courthouses prior to designing the one in Riley County (those in Shawnee, Geary, Clay, Coffey, and Mitchell counties). Though the design for the Clay County Courthouse is somewhat different, the Shawnee, Geary, Coffey, and Mitchell County Courthouses are very similar to that built in Riley County. As noted above, the Holland and Squires' design used in Riley County was also used in Marion County (1905-1906), in Harvey County (1906), in Thomas County (1906-1907 using brick instead of stone), and in Osborne County (1907-1908). Although not credited in the *Historic County Courthouses of Kansas Multiple Property Nomination*, the Harvey County Courthouse was also designed by Holland and Squires and built in 1906 but demolished in c. 1965. It was also identical to the other four courthouses built in this period. Holland and Son designed a Courthouse for Rice County in 1910-1911 that was similar in design to the Clay County Courthouse. In all, J.C. Holland and F.C. Squires, together and in separate firms, designed no fewer than fourteen Kansas courthouses.

In addition to the similarity of designs in the Holland and Squires' courthouses, at least three of the courthouses, Marion, Coffey, and Riley County, also shared the same contractor - J.B. Betts Jr. Additionally, stone mason, David R. Penny did the stone work on at least three of the Holland courthouses, Marion, Osborne and Riley County. The designers and craftsmen responsible for the Riley County Courthouse contributed greatly to its historic and architectural significance.

The Designers and Craftsmen

The Riley County Courthouse was designed by J.C. Holland and F.C. Squires. J.B. Betts Jr. was the general contractor with Clarence Johnson serving as the local managing contractor. David R. Penny is credited with carving the stone figures on the Courthouse. Each contributed to the character of the building.

*James Clinton Holland*¹⁹

James C. (J.C.) Holland was born at Lima, Ohio April 2, 1853 to B.A. Holland, a founder of Lima, a contractor and a lawyer and Lydia Osmon Holland. He was educated in the public schools of Lima and Ada, Ohio. After 1869 he learned the carpenter trade and worked as a contractor and builder. From 1874 – 1877 he attended Northwestern Ohio Normal University. He began a career in 1877 as an architect, working for a year in the office of Rumbaugh and Bacon of Toledo, Ohio. From 1881 to 1882 he spent two years at Cornell University completing his education. After Cornell he accepted the chair of architecture in the Northwestern Ohio Normal University and also worked in private practice. In 1885 he resigned and moved to Topeka, Kansas and joined the firm of Hopkins and Holland. In 1889 he began his own firm. He was elected state and statehouse architect in 1895 by the executive council and state board of public work. Resigning in 1898, he became special architect for the Santa Fe Railway Company. After one year he resumed private practice.

**United States Department of the Interior
National Park Service**

**National Register of Historic Places
Continuation Sheet**

**Historic Public Schools of Kansas
Riley County Courthouse
Manhattan, Kansas**

Section: 8 Page: 14

During his career he designed buildings alone, with Hopkins and Holland; with Holland and Squires; with Holland Gamble and Holland; and J.C. Holland and Sons. Widely known as a courthouse architect, Holland was responsible for the designs of courthouses in: Shawnee, Geary, Clay, Coffey, Mitchell, Marion, Riley, Thomas, Osborne, Harvey, Rice, and Ness counties. He, or his firms, also designed a number of Topeka buildings including: the Topeka City Auditorium, all but one of the residences on Governor's Row on Buchanan Street, Shawnee County jail, Mills building, Norton building, Masonic Temple, Capper Publications building, Palace Clothing Company buildings, Fullerton's building, Warren M. Crosby building, Herkson Brothers building, the Central National Bank building, the Bank of Topeka, a number of store fronts along Kansas Avenue, the First Methodist Church, Central Congregational Church, Presbyterian Church, Stormont Hospital and the Stormont Nurses home, the Throop Hotel, the old Topeka High School, the Topeka Daily Capital building, Topeka State Journal building, the Topeka Y.M.C.A., and a number of buildings for Wells Fargo Express Company. Holland also designed many state buildings while state architect, including the central portion of the State Capitol.

J.C. Holland married Lizzie Baker at Ada, Ohio September 14, 1882. They had two sons, Barton Andrew Holland, who joined the firm of Holland and Son, and Franklin Osmon Holland, who was studied dentistry at the St. Louis Dental College and a daughter Lydia Lucile (Mrs. R. H. Sowers.) He was a member of several Masonic orders, Toltecs, Rotary Club Elks Club, the Chamber of Commerce of Topeka, and the Central Congregational Church of Topeka. He was recognized for membership in the New York Society of Architects, one of only eight architects outside of New York City invited to membership, underscoring Holland's reputation and prominence. J.C. Holland died at his home 1506 West Fifteenth Street Topeka May 28, 1919. The firm of Holland and Son was continued by his son after his death.

*Frank C. Squires*²⁰

F.C. Squires was born at Columbus, Ohio November 1871, the son of J.H. and Jennie Schimp Squires. In 1879 the family purchased land six miles north of Wamego in Pottawatomie County and around 1885, the family moved to Topeka. Frank Squires was educated in the Topeka Art School and took a special course in architecture at Columbia University. He worked in the offices of J.C. Holland in Topeka, W.S. Epperson in Sedalia, Missouri, and J.G. Haskell in Topeka. By 1910 he had his own firm. Squires was a Mason and a member of the Elks Club and the Co-Operative Club. He married Mannie B. Kahr of Topeka August 17, 1893.

Among the buildings F.C. Squires is credited with designing are the Kansas Children's Home Society, the addition to the Central Paper Company building, the Bank of Palmer, remodeling of the Majestic Theater, Topeka City Auditorium, the Manual Training School, Lafayette School, and the Parkhurst-Davis building, all in Topeka. In addition to his prominence as Holland's partner in the design of several Kansas courthouses, Squires developed a local reputation as a residential architect. He designed the following homes in Topeka: the T.R. Paxton residence at 925 Western Avenue, Mrs. C.W. Jewell building at 1216 Fillmore, Dr. L.H. Munn apartment houses at Fifth and Polk, Dr. O.F. Marcotte residence, Ed L. Hindman residence, W.O. Rigby residence 903 West Tenth Avenue, Dr. Eva Harding residence on College Avenue, George A. Guild bungalow at Eleventh Street and Western, Robert Pierce Jr. residence at 529 Boswell Avenue, Jones and Austin residence in Potwin, A. Marburg garage at 629 Jackson, and the J.E. Moon bungalow. Outside of Topeka, Squires designed the W.J. Todd residence Maple Hill, F.B. Fegan residence Junction City, W.R. Guild residence Hiawatha, and the M.F. Southwick residence in Greenleaf.

*Joseph Benjamin Betts Jr.*²¹

J.B. Betts was born on a farm in Morgan County, Illinois near Meredosia on February 22, 1851 to Joseph Benjamin Betts Sr. and Susan Cowden Wimmer Betts. The family moved near Grantville, Kansas in 1860. About 1876 J.B. Betts Jr. moved to Topeka, Kansas and ran a meat market for a year. He then moved to Crawford County, Kansas but returned to Topeka in 1882 and engaged in general contracting in the firm of J.B. Betts Construction Company. In 1899, Clarence Johnson of Manhattan joined his firm and Betts son-in-law Harry C. Goodrich, joined the firm in 1907. His firm has worked on many projects across the state: barracks and officers quarters at Ft. Riley, the Indian Schools; courthouses in Burlington, Manhattan, Marion, Salina and Leavenworth; the Academy for the Sisters of St. Joseph at Concordia; the Davis Block in Topeka, many depots and round houses for the Santa Fe railway and the Santa Fe shops in Topeka and in

**United States Department of the Interior
National Park Service**

**National Register of Historic Places
Continuation Sheet**

**Historic Public Schools of Kansas
Riley County Courthouse
Manhattan, Kansas**

Section: 8 Page: 15

Amarillo, Texas; state hospital at Rosedale; two buildings at Kansas State Agricultural College, and his home at 825 Buchanan in Topeka.

Betts married Lula M. Sandmeyer, of Wabaunsee County, daughter of Jacob Sandmeyer, October 29, 1892. They had two children: Joseph Warren (Warren), Rebecca Myrtle (Mrs. H.C. Goodrich). Although well-known as a contractor, Betts was also involved in local and state politics. J.B. Betts was a Republican and served two years on the Topeka City Council. He later served in the Kansas House of Representatives and as a Kansas Senator. He was an unsuccessful candidate for Sheriff of Shawnee County in 1899.

Betts was a Scottish Rite Mason, a Knight Templar, and Noble of the Mystic Shrine as well as a member of the Benevolent and Protective Order of Elks, the Knights of Pythias, the Independent Order of Odd Fellows, Modern Woodmen of America, Ancient Order of United Workmen, and the Order of Eagles. He was a charter member of the Fraternal Aid Association and a member of the Topeka Commercial Club and the Topeka Country Club. In 1908 Mr. Betts helped organized the German-American State Bank at Topeka and served as Vice President. J.B. Betts died April 1, 1913 at his home in Topeka.

*Clarence E. Johnson*²²

Clarence Johnson was born November 19, 1866 in Sweden. He moved to McPherson County with his family as a baby and moved to Manhattan in 1895 where he began work as a general contractor. About 1899 he began work with the J.B. Betts Construction Company of Topeka. In 1921 he became a member of the Board of Directors of the Manhattan Federal Savings and Loan Association and served as its President 1933 to 1958. He served as Mayor of Manhattan 1925-1928. Clarence married Salma Olivia Bohgren January 22, 1898. She was born September 22, 1870 and died August 3, 1959. They had two daughters. Daughter Mrs. Elfreda Peterson was a well know local artist (born, July 27, 1908); their second daughter was Mrs. Florence M. Hughes. Clarence Johnson was a member of the First Methodist Church Manhattan; charter member of the Manhattan Rotary Club; and several Masonic lodges. He died October 26, 1960 and is buried at Manhattan's Sunset Cemetery.

*David Ralph Penny*²³

D.R. Penny was born in Keokuk, Iowa February 19, 1876 to Scottish immigrants. Penny's father worked as a stone mason and contractor in Council Grove. David began working for his father at the age of 11 and at age 17 he had completed his apprenticeship as a stone-cutter. One of his first jobs was the columns on the Carnegie Library, adjacent to the courthouse in downtown Manhattan.

Penny met and married Bertha McCreary in Manhattan in 1907 and they had one daughter, Charlotte Penny Lorenzen. Penny operated his own quarry in Manhattan (later partnering with Frank Root). His first major job was the Riley County Courthouse; he was hired by his friend, Clarence Johnson. Penny was given artistic license to sculpt details into the otherwise formal Courthouse. Penny later did work on other buildings in the city including several building on the Kansas State campus. Penny was a member and past exalted ruler of the Manhattan Elks. He retired and left Manhattan in 1948-49, moving to Princeton, Illinois. He died in 1953 in Findley, Ohio.

Summary

The Riley County Courthouse is being nominated to the National Register of Historic Places under the *Historic County Courthouses of Kansas Multiple Property Form*. The Riley County Courthouse is one five courthouses designed by J.C. Holland and F.C. Squires between 1905 and 1907. The Harvey County Courthouse was demolished when a new courthouse was built in 1965; the three other courthouses (Marion, Thomas and Osborne counties) are all listed on the National Register of Historic Places. The Riley County Courthouse retains integrity of location, setting, design, materials, workmanship, feeling, and association. It is significant as a representative of early 20th century courthouses in Kansas, as the County Courthouse in Manhattan for 100 years, and as an example of a Richardsonian Romanesque courthouse designed by prominent Kansas courthouse architects, J.C. Holland and F.C. Squires.

United States Department of the Interior
National Park Service

National Register of Historic Places
Continuation Sheet

Historic Public Schools of Kansas
Riley County Courthouse
Manhattan, Kansas

Section: 8 Page: 16

¹ The statement of significance is refined from a former draft prepared by Cheryl Collins of the Riley County Historical Society. The statement is based largely on the Osborne County Courthouse National Register Nomination (also designed by J.C. Holland) which were prepared by Sally Schwenk and Dana Cloud of Historic Preservation Services with the *Historic County Courthouses of Kansas Multiple Property Listing* in 2000.

² Manhattan Independent, June 15 and July 6, 1867.

³ Manhattan Mercury, December 8, 1886 and February 15, 1888.

⁴ Manhattan Mercury, June 6, 1900.

⁵ Riley County Commission Minutes, April – June, 1905.

⁶ Riley County Commission Minutes, July 20, 1905.

⁷ Riley County Commission Minutes, July and August, 1905.

⁸ Manhattan Republican, April 12, 1906.

⁹ Riley County Commission Minutes, January 14, 1907.

¹⁰ Manhattan Industrialist, October 6, and November 10, 1906.

¹¹ Manhattan Mercury, September 21, 1980.

¹² Riley County Commission Minutes, January 15, 1951.

¹³ The Clock bought to replace parts on the Riley County Courthouse Clock during the 1980 restoration was from the 1911 Coal County Oklahoma Courthouse. This Oklahoma Clock was a twin to the Riley County Clock, both being manufactured by the E. Howard Clock Company. The Oklahoma Clock was sold to Mr. John Younkman, Postmaster of North Newton, Kansas after Coal County replaced their Courthouse in 1968. June 10, 1980 David Seay purchased the Clock from Mr. Younkman and various parts were used in the restoration. The rest of the Oklahoma Clock will be saved for future spare parts. (Riley County Historical Museum files).

¹⁴ The original construction documents are available at the Riley County Public Works Office.

¹⁵ Riley County Commission Minutes, March 5, 1928.

¹⁶ Riley County Commission Minutes (researched and compiled by Riley County Historical Museum)..

¹⁷ Riley County Chronicle, May 21, 1918.

¹⁸ Julie A. Wortman and David P. Johnson, Legacies: Kansas' Older County Courthouses. Kansas State Historical Society, Topeka, 1981.

¹⁹ Topeka State Journal, May 28, 1919; Topeka Daily Capital, May 29, 1919; W.E. Connelley, Standard History of Kansas and Kansans (Chicago, New York: Lewis Publishing Company, 1918) 1742; and Blue Book of Topeka. (1910) 44.

²⁰ Topeka State Journal, January 16, 1915 and March 9, 1934; Topeka Daily Capital, March 10, 1934; William C. Connelley, Standard History of Kansas and Kansans. (Chicago, New York: Lewis Publishing Company, 1918) 1807; Who's Who in and Around Topeka. (1926) 134; and Blue Book of Topeka. (1910) 194.

²¹ Frank W. Blackmar, Kansas, Part I. (Chicago: Standard Publishing Company, 1912) 224 and Topeka Daily State Journal, April 1 and April 2, 1913.

²² "Manhattan Federal Expands with Progress Over 75 Years," Manhattan Mercury, April 12, 1960; "Clarence Johnson Ex-Mayor of City Dies in Hospital," Manhattan Mercury, October 27, 1960; Riley County Marriage Record Book C, 296; and Riley County Historical Museum Family Files.

²³ Manhattan Republican, April 16, 1953 and Manhattan Mercury, October 5, 1980.

**United States Department of the Interior
National Park Service**

**National Register of Historic Places
Continuation Sheet**

**Historic County Courthouses of Kansas
Riley County Courthouse
Manhattan, Kansas**

Sections: 9-10 & Additional Documentation Page: 17

Bibliography

- Blackmar, Frank W. Kansas, Part 1. Chicago: Standard Publishing Company, 1912.
- Blue Book of Topeka, 1910 (Copies of pages 44 and 194, no publisher identified).
- Cloud, Dana, and Sally F. Schwenk. *Osborne County Courthouse National Register Nomination*, April, 2000.
- Collins, Cheryl. *Riley County Courthouse Draft Nomination*, April, 2004.
- Connelley, W.E. Standard History of Kansas and Kansans. Chicago and New York: Lewis Publishing Company, 1918.
- Kansas State Historical Society Cultural Resources Division files on individual County Courthouses and Museum photograph files.*
- Manhattan Independent, June 15, and July 6, 1867.
- Manhattan Industrialist, October 6 and November 10, 1906.
- Manhattan Mercury, December 8, 1886; February 15, 1888; June 6, 1900; December 10, 1926; March 7, 1928; April 12, 1960; September 21 and October 5, 1980.
- Manhattan Nationalist, June 14, 1905; June 16, 1910.
- Manhattan Republican, April 12 and 26, 1906; and April 16, 1953. (Semi-Centennial Edition of The Manhattan Nationalists, June 16, 1910.
- Riley County Chronicle, May 21, 1918.
- Riley County Commission Minutes (researched and compiled by the Riley County Historical Museum).
- Riley County Courthouse Chronology*, Riley County Historical Museum, 2003.
- Riley County Courthouse Original Design Documents*, Holland and Squires Architects, 1905. (Available at Riley County Public Works).
- Riley County Courthouse Renovation Plans*, Ron Reid Associates/Gould Evans Partnership, 1982. (Available at Riley County Public Works).
- Riley County Historical Museum Family Files.*
- Riley County Marriage Book C*, Riley County Historical Museum.
- Schwenk, Sally F. *Historic County Courthouses of Kansas*, Multiple Property Nomination Form, March, 2002.
- Schwenk, Sally F., and Dana Cloud. *Kansas Historic Resources Inventory Reconnaissance Form*, 11/17/99.
- Topeka Daily Capital, May 29, 1919 and March 10, 1934.
- Topeka State Journal, April 1 and April 2, 1913; January 16, 1915; May 28, 1919; and March 9, 1934.
- War Memorial Dedication Program, November 11, 1992. Riley County Historical Museum files.
- Berrett, Howard D. Who's Who in and Around Topeka. Topeka: Adams Brothers Publishers, 1926.
- Wortman, A. Julie and David P. Johnson. Legacies: Kansas' Older County Courthouses. Topeka: Kansas State Historical Society, 1981.

Geographical Data

Verbal Boundary Description – Subdivision of Ward 2 beginning as SW corner Lot 413, then N 150', E50', N15', E60', S15', E175', S150', W285' to POB.

Boundary Justification – The boundary reflects the original three lots donated to the County for the construction of the Courthouse in 1903.

Additional Documentation

Maps

USGS map attached

Figure 1 – Site Plan Sketch (Spencer, 2004)

Historic Views

Figures 2-3 – Historic Views of Courthouse provided by Riley County Historical Museum

Figure 4 – Original Design Documents, Holland and Squires, 1905 (Riley County Public Works Department).

**United States Department of the Interior
National Park Service**

**National Register of Historic Places
Continuation Sheet**

**Historic County Courthouses of Kansas
Riley County Courthouse
Manhattan, Kansas**

Sections: 9-10 & Additional Documentation Page: 18

Photographs

Photos were taken by Brenda Spencer December, 2004. Riley County Historical Society holds the original negatives.

<u>#</u>	<u>Description of View [direction of camera]</u>
1	Front (south) facade of Courthouse and Wareham Hotel and Theater on right (Along Poyntz Avenue) [northeast]
2	Front (south) facade of Courthouse, granite War Memorial in foreground, Carnegie Library (Courthouse Annex) on left (Along Poyntz Avenue) [northwest]
3	East facade [southwest]
4	Rear (north) facade [southwest]
5	West facade and Courthouse Plaza in foreground [east]
6	Front (south) facade [north]
7	Detail of main entrance on south facade [north]
8	Detail of carvings on column at main south entrance [northwest]
9	Detail of clock tower (south and west faces) [northeast]
10	Detail of wall dormer on west end of south (front) facade [northeast]
11	Ground floor (basement) corridor [west]
12	Second floor lobby/corridor [east]
13	South (main) entry foyer [south]
14	One of two stairways flanking main entrance, second floor [southwest]
15	One of two stairways flanking main entrance, from 3 rd floor [south]
16	Original door to attic stair, 3 rd floor corridor [southeast]
17	Clock mechanism in upper floor of tower [southwest]
18	Original attic windows in wall dormer at center of west facade [northwest]
19	Original vault door in County Treasurer's (no Clerk of the Court's) office on second floor [southeast]
20	Original fireplace, in room at southwest corner of second floor [northwest]

**United States Department of the Interior
National Park Service**

**National Register of Historic Places
Continuation Sheet**

**Historic County Courthouses of Kansas
Riley County Courthouse
Manhattan, Kansas**

Sections: 9-10 & Additional Documentation Page: 19

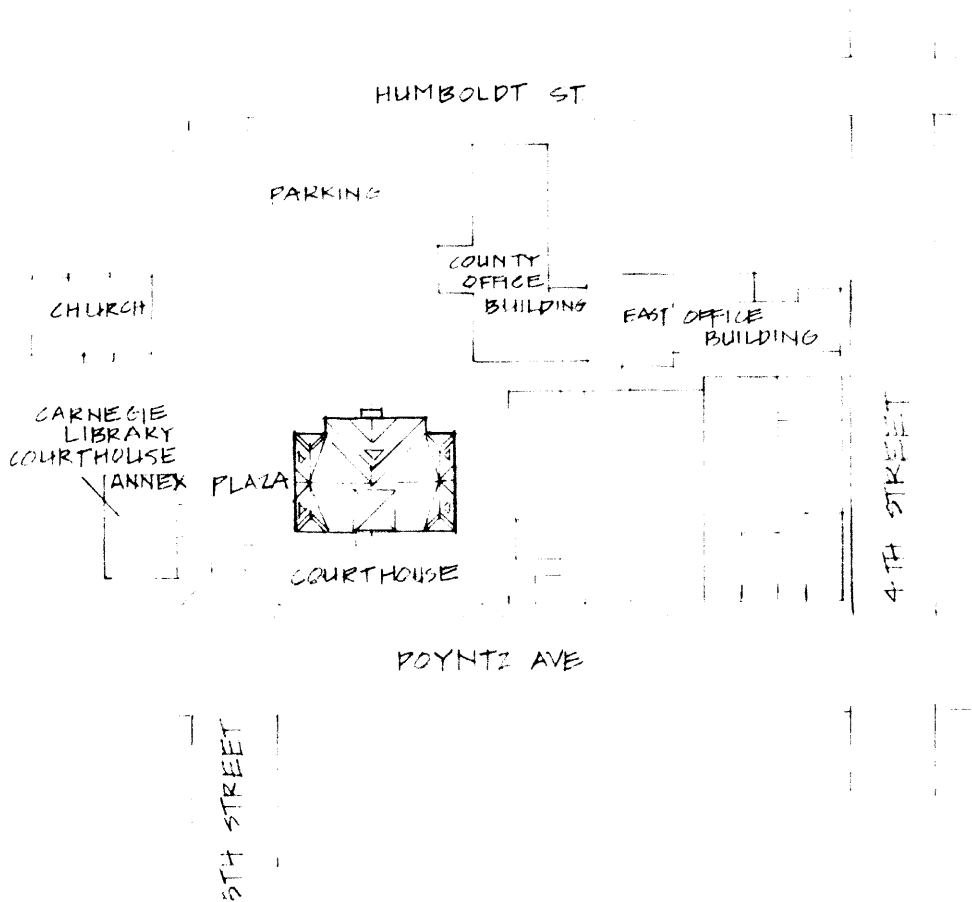


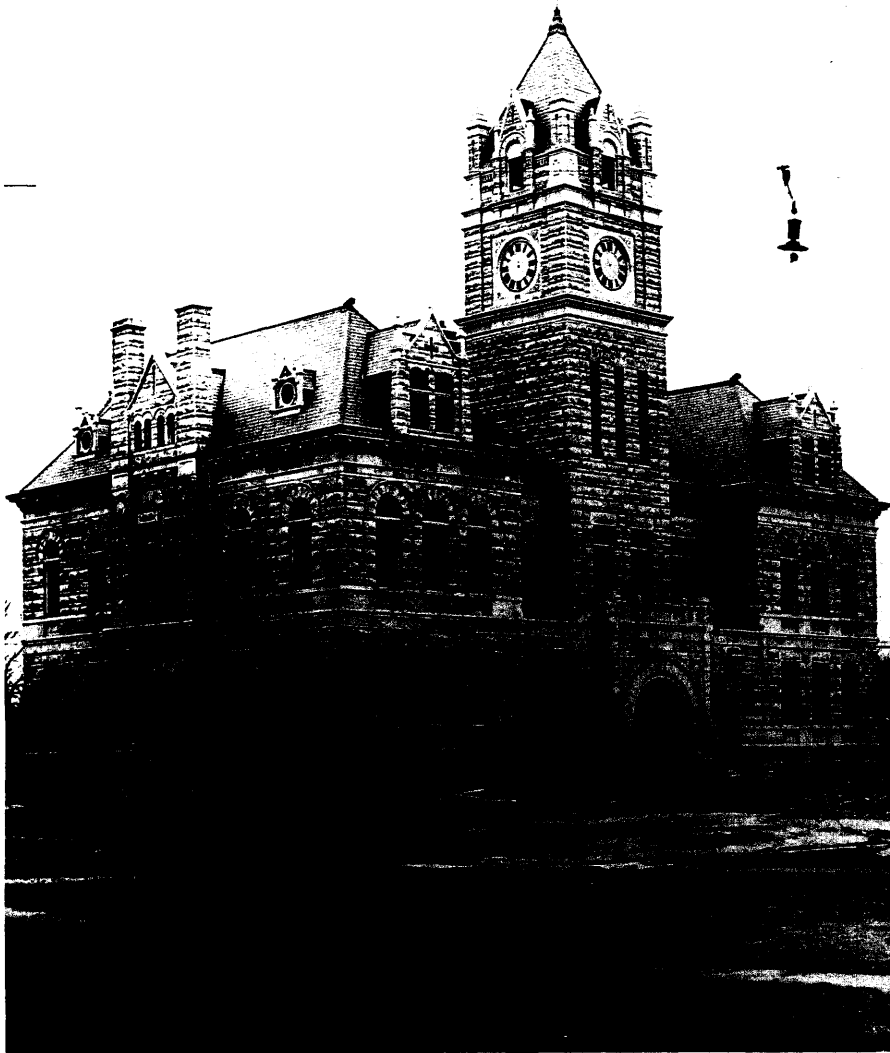
Figure 1 – Site Plan (Spencer, 2004)

**United States Department of the Interior
National Park Service**

**National Register of Historic Places
Continuation Sheet**

**Historic County Courthouses of Kansas
Riley County Courthouse
Manhattan, Kansas**

Sections: 9-10 & Additional Documentation Page: 20



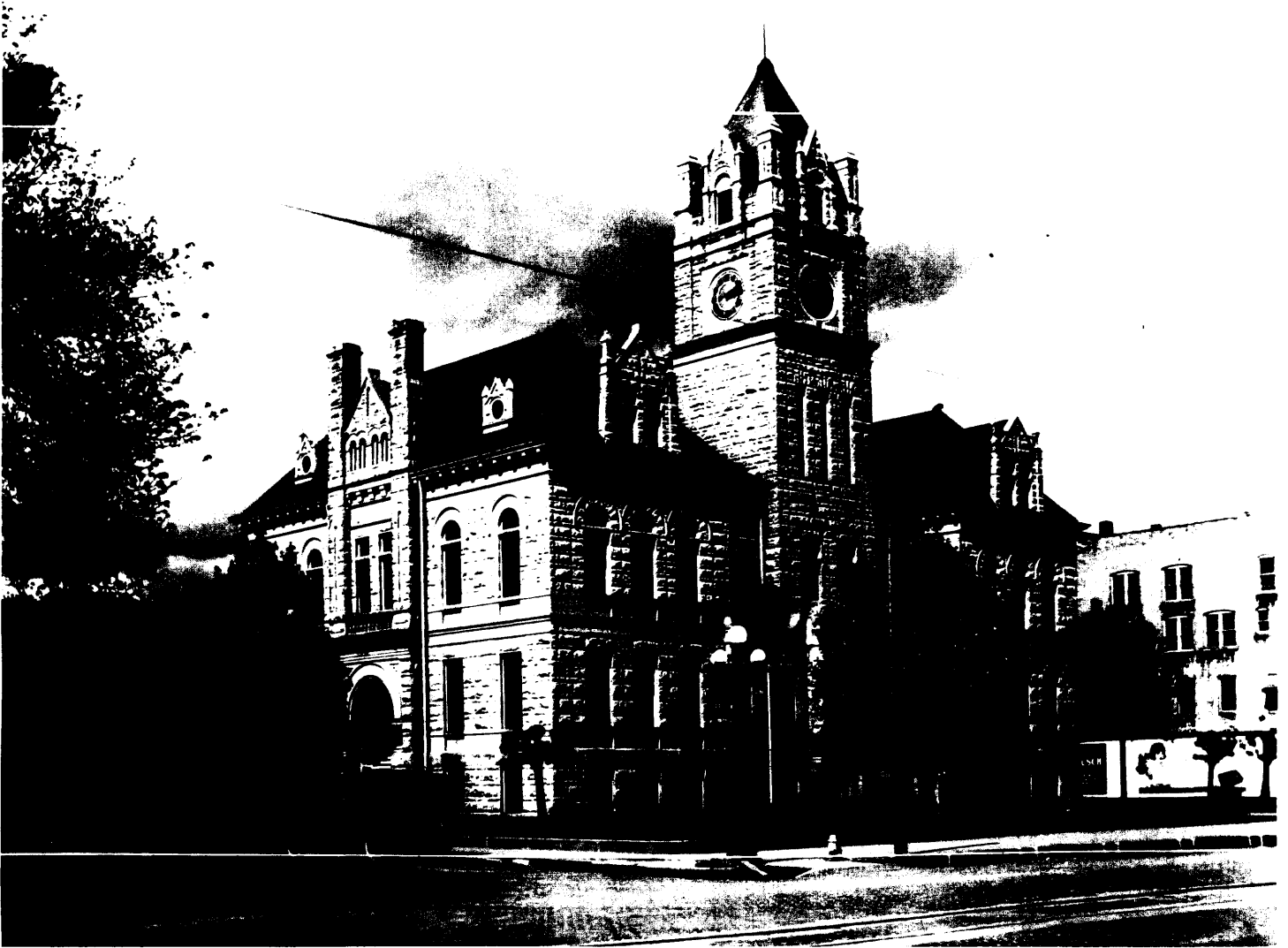
*Figure 2 - Riley County Courthouse, early 1907, shortly after construction was completed.
Source: Riley County Historical Museum (CP 988.1.35)*

**United States Department of the Interior
National Park Service**

**National Register of Historic Places
Continuation Sheet**

**Historic County Courthouses of Kansas
Riley County Courthouse
Manhattan, Kansas**

Sections: 9-10 & Additional Documentation Page: 21



*Figure 3 - Riley County Courthouse, c. 1925.
Source: Riley County Historical Museum (CP 977.17.10.LL)*



FRONT ELEVATION

SCALE: 1/4" = 1'-0"

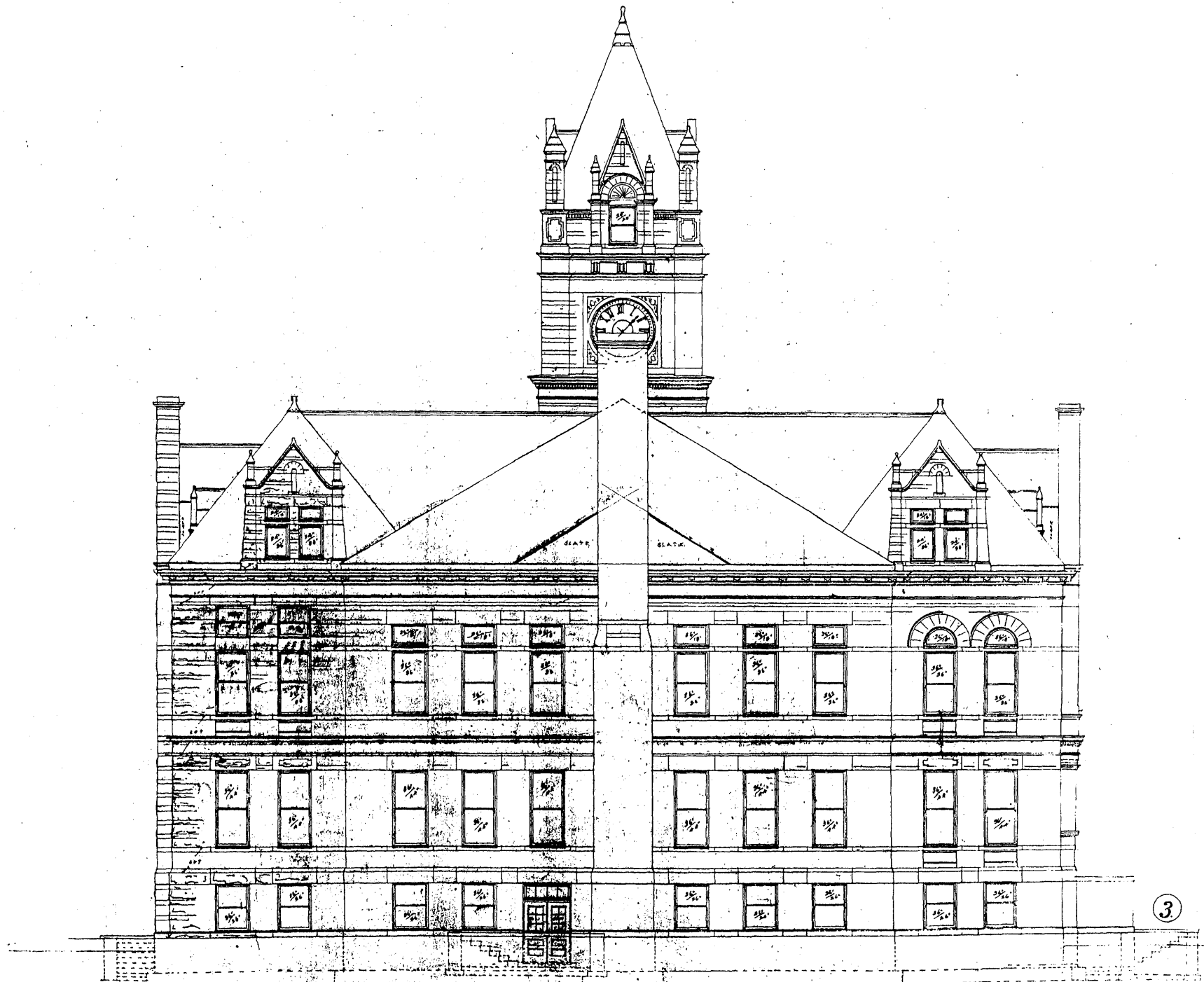
①
PLANS FOR RILEY COUNTY COURT
HOUSE AT MANHATTAN, KANS.
HOLLARD & SQUIRES ARCHITECTS TOPEKA, KANS.



SIDE ELEVATION

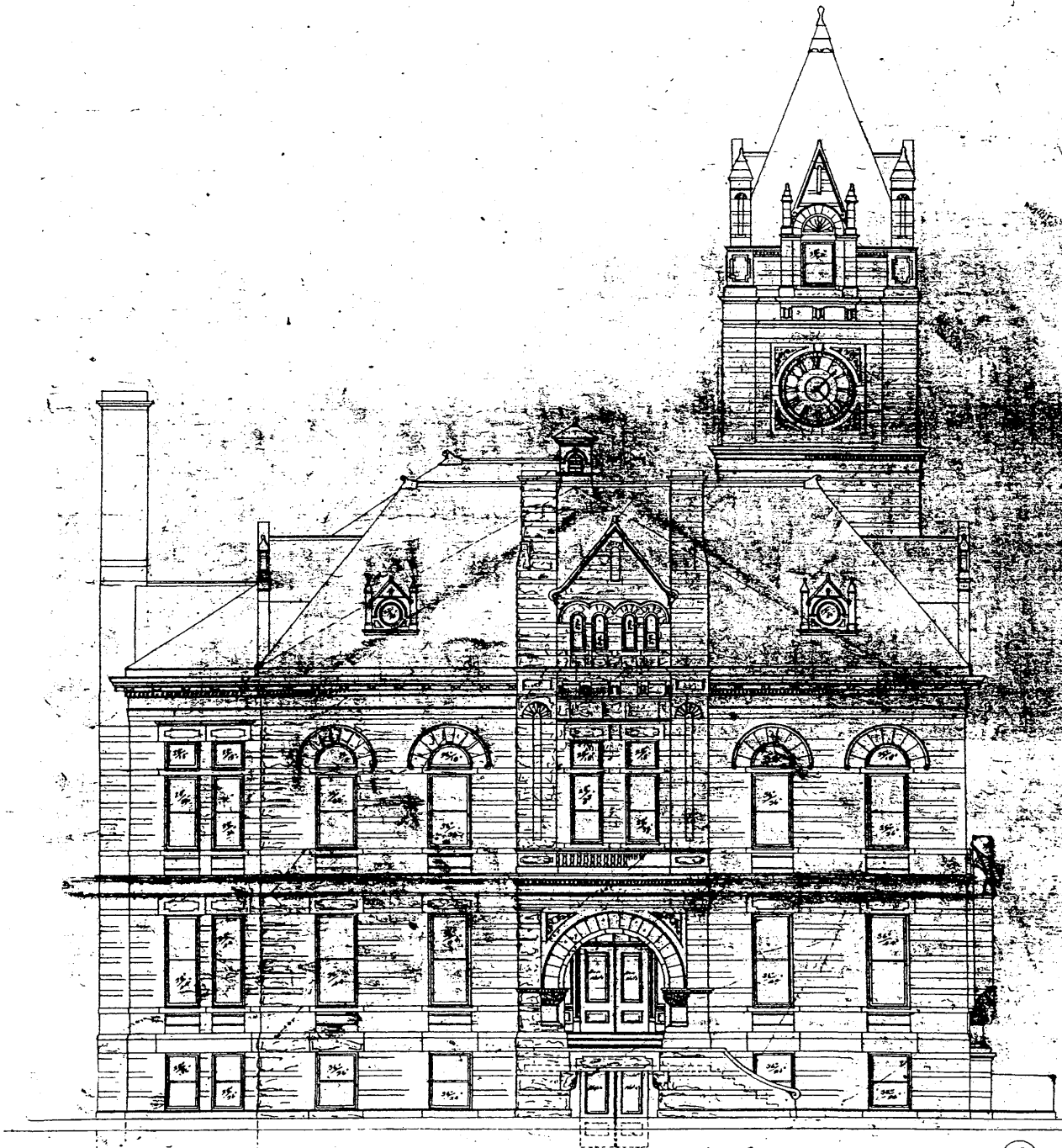
2

PLANS FOR RILEY COUNTY COUR
HOUSE AT LEAVENWORTH, KANSAS
HOLLAND'S SQUARE, NEW YORK



REAR ELEVATION

PLANS FOR RILEY COUNTY COURT HOUSE AT MATHEWAM-KANS. HOLLAND & SQUIRES ARCHITECTS TOPEKA, MO.

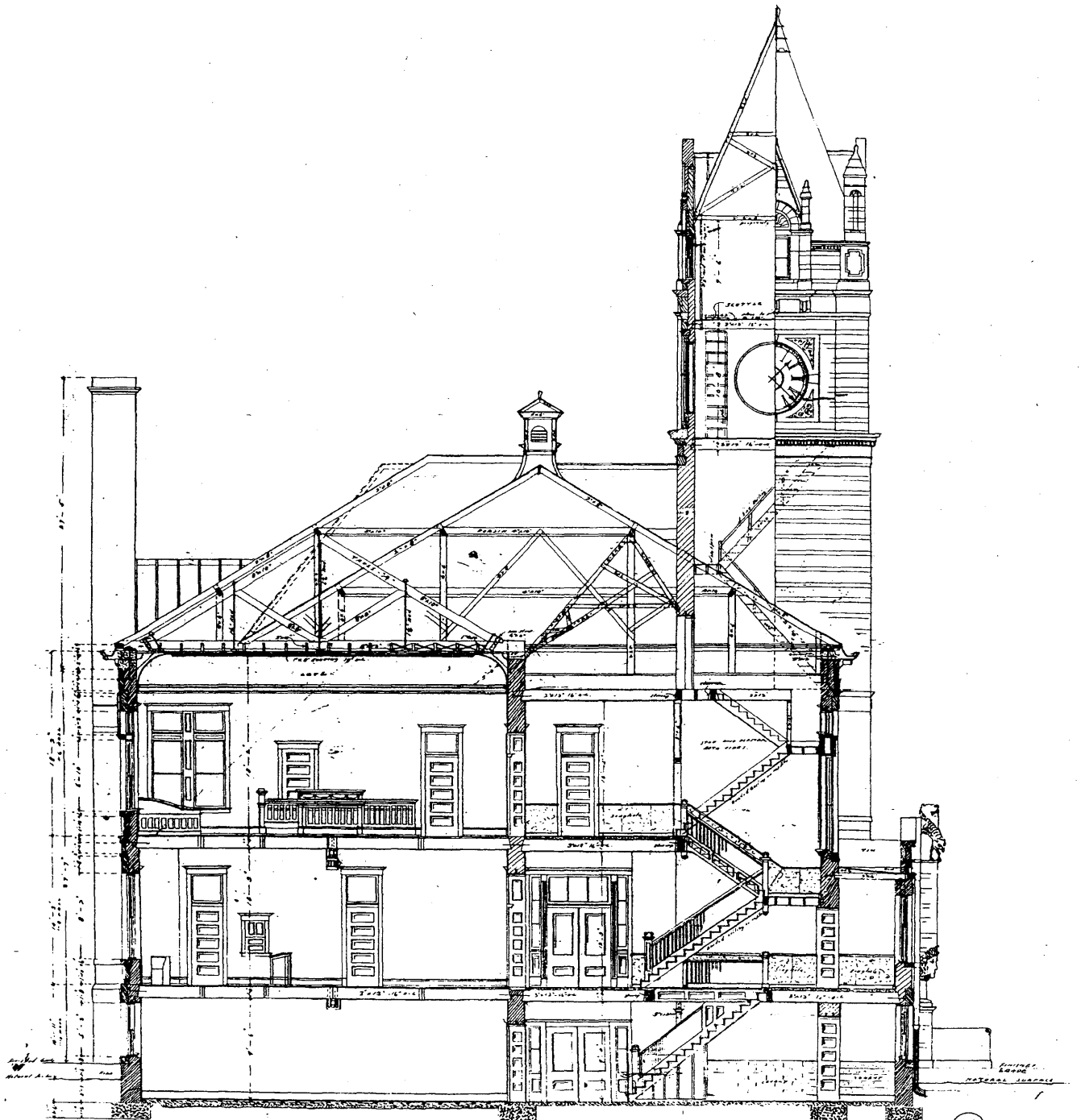


SIDE ELEVATION

SCALE: 1/4" = 1'-0"

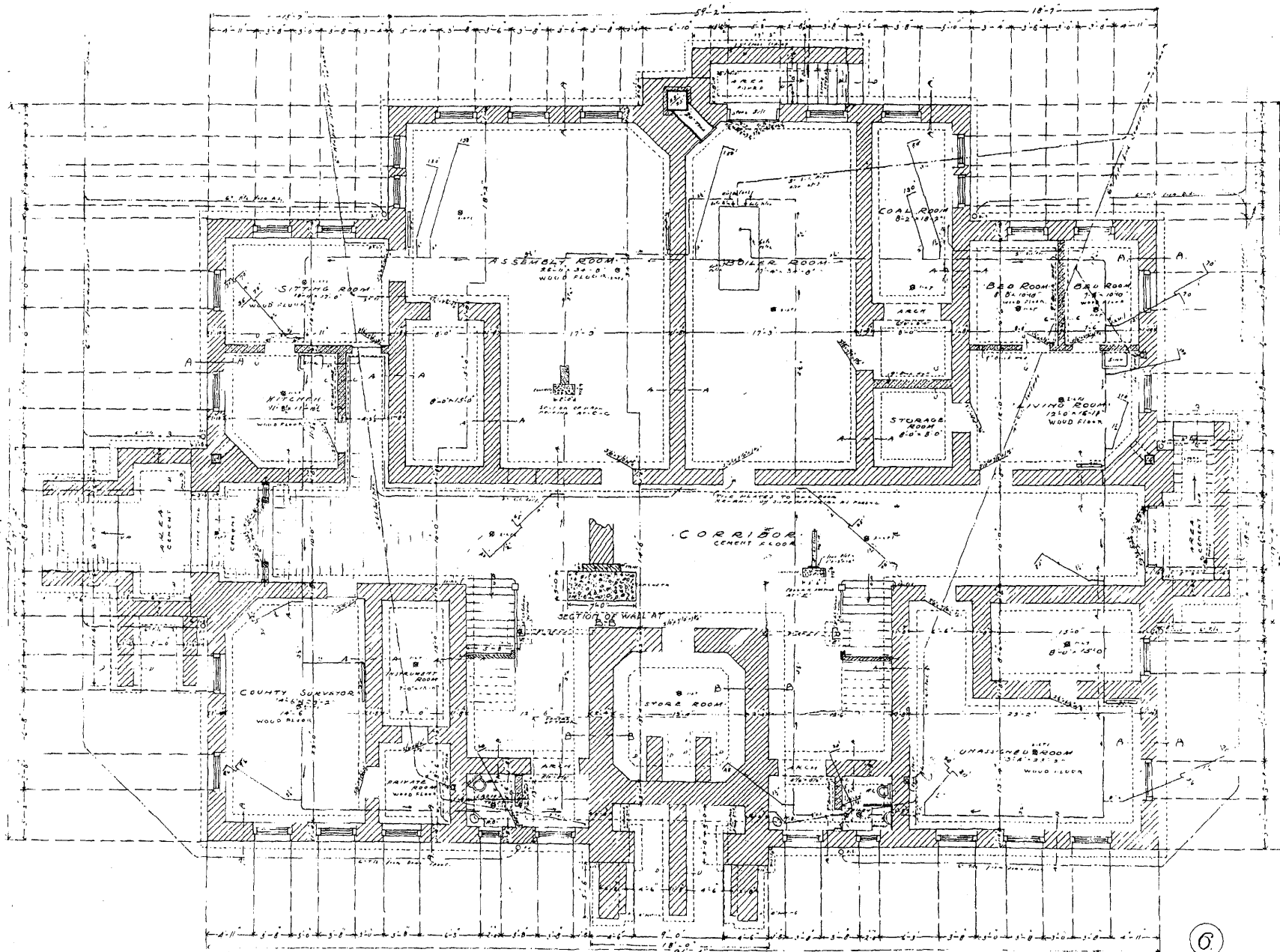
4

PLANS FOR RILEY COUNTY COURT
HOUSE AT MANHATTAN, KANS.
HOLLAND & SQUIRES ARCHITECTS - TOPEKA



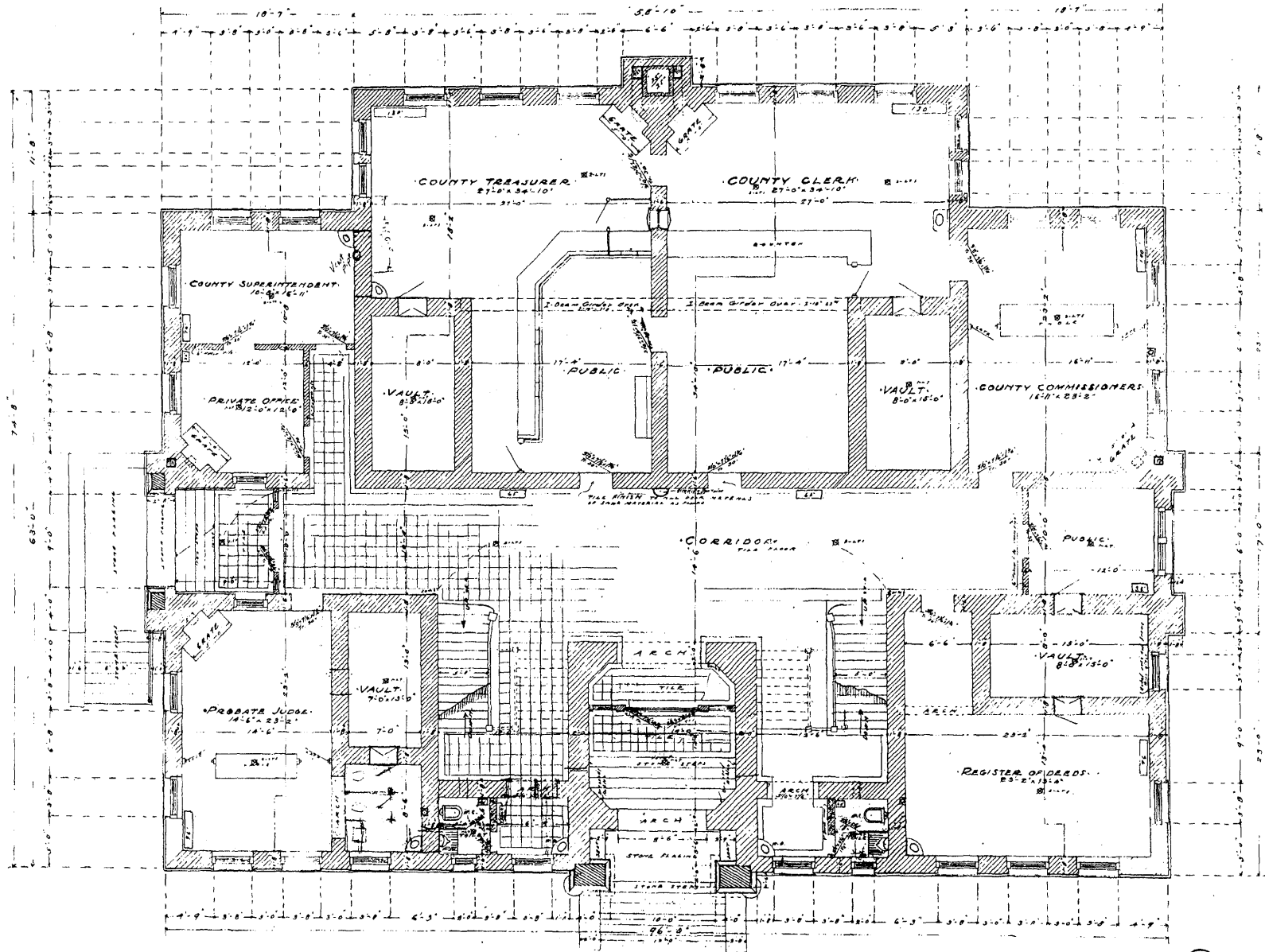
5

TRANSVERSE SECTION PLANS FOR RILEY COUNTY COURTHOUSE AT MARIETTA, MISSOURI
 SCALE: 1/4" = 1'-0"



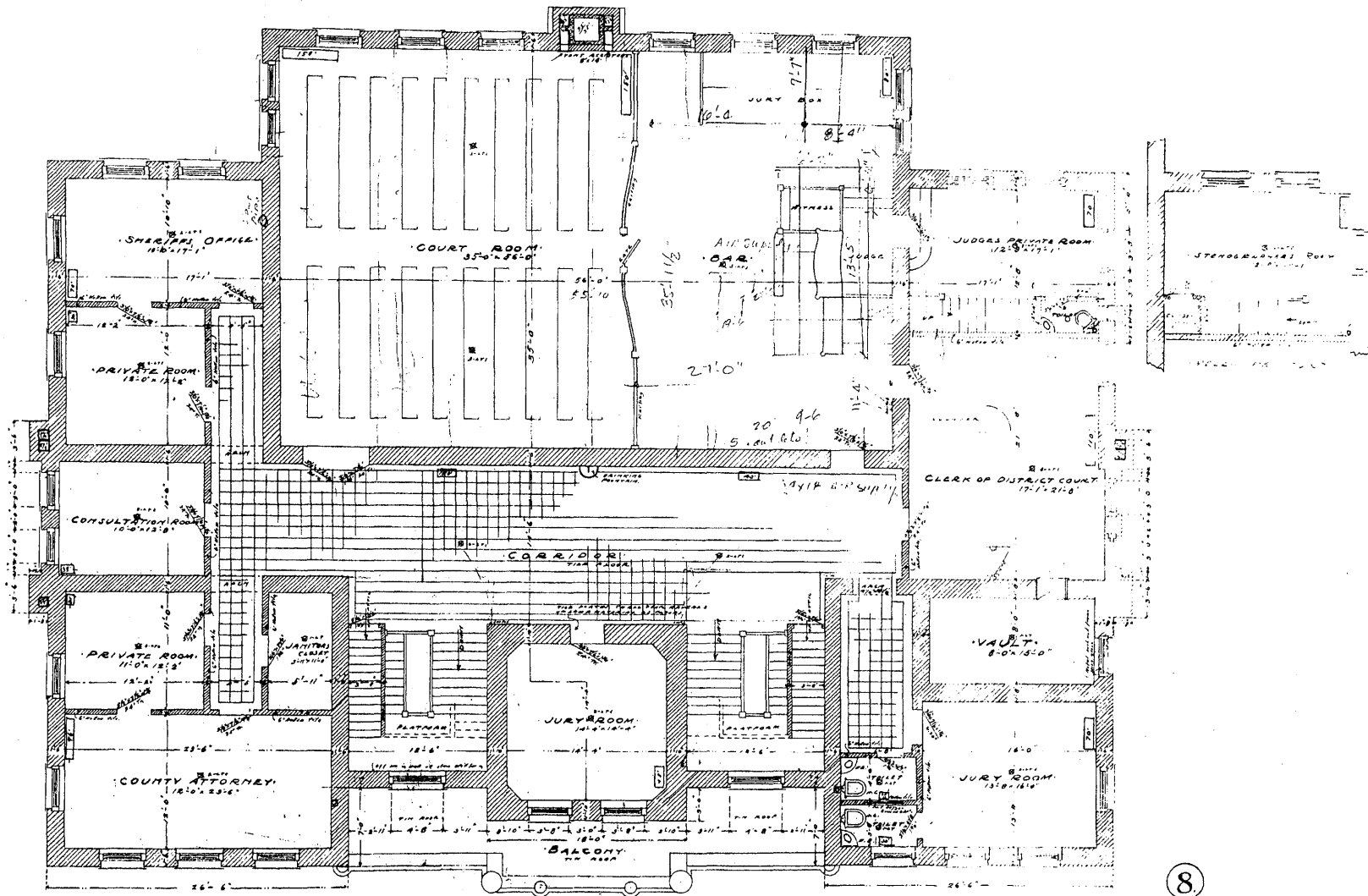
BASEMENT FLOOR PLAN
SCALE 1/8" = 1'-0"

PLANS FOR RILEY COUNTY COURT HOUSE AT MATHEMATIAN HILLS. HOLLAND & SQUIRES ARCHITECTS, INDIANAPOLIS



FIRST FLOOR PLAN.
SCALE: 1/4" = 1'-0"

PLANS FOR RILEY COUNTY COURT
HOUSE AT MANHATTAN, KANS.
HOLLAND & SQUIRES ARCHITECTS, TOPEKA, KAN.



SECOND FLOOR PLAN.
SCALE: 1/4" = 1'-0"

PLANS FOR RILEY COUNTY COURT HOUSE AT MANHATTAN, ILLS. HOLLAND & INQUIRES ARCHITECTS