



SEP 22 1980

Warm Springs Historic District (525 and 511 Warm
Springs Avenue) Sites #2 and 1
Boise, Ada County, Idaho

Photograph by Duane Garrett,
1978

Negative on file at Idaho State Historical Society
Boise, Idaho

View from northwest

Photograph 1 of 25

JUL 14 1980



SEP 22 1980

Warm Springs Historic District (635, 615 and 605 Warm
Springs Avenue) Sites #6, 5, and 4
Boise, Ada County, Idaho

Photograph by Duane Garrett
1978

Negative on file at Idaho State Historical Society
Boise, Idaho

View from southeast

Photograph 2 of 25

JUL 14 1980



SEP 22 1980

Warm Springs Historic District (709, 635½ and 635
Warm Springs Avenue) Sites #8, 7, 6
Boise, Ada County, Idaho

Photograph by Patricia Wright
1978

Negative on file at Idaho State Historical Society,
Boise, Idaho

View from northeast

Photograph 3 of 25

JUL 14 1980



SEP 22 1980

Warm Springs Historic District (741 and 739 Warm
Springs Avenue) Sites #12 and 11
Boise, Ada County, Idaho

Photograph by Patricia Wright
1979

Negative on file at Idaho State Historical Society
Boise, Idaho.

View from northeast

Photograph 4 of 25

JUL 14 1980



SEP 22 1980

Warm Springs Historic District (809-809½, 807 and
805 Warm Springs Avenue) Sites #16, 15 and 14
Boise, Ada County, Idaho

Photograph by Patricia Wright
1979

Negative on file at Idaho State Historical Society
Boise, Idaho

View from southeast

Photograph 5 of 25

JUL 14 1980



SEP 22 1980

Warm Springs Historic District (929 Warm Springs
Avenue) Site #22, Boise, Ada County, Idaho

Photograph by Duane Garrett
1978

Negative on file at Idaho State Historical Society
Boise, Idaho

View from North

Photograph 6 of 25

JUL 14 1980



SEP 22 1980

Warm Springs Historic District (945 Warm Springs
Avenue) Site #23
Boise, Ada County, Idaho

Photograph by Duane Garrett
1978

Negative on file at Idaho State Historical Society
Boise, Idaho

View from north

Photograph 7 of 25

JUL 24 1980



SEP 22 1980

Warm Springs Historic District (1009 Warm Springs
Avenue), Site #25
Boise, Ada County, Idaho

Photograph by Duane Garrett
1978

Negative on file at Idaho State Historical Society
Boise, Idaho

View from north

Photograph 8 of 25

JUL 14 1980



SEP 22 1980

Warm Springs Historic District (1037 and 1035 Warm
Springs Avenue) Sites #27 and 26
Boise, Ada County, Idaho

Photograph by Duane Garrett
1978

Negative on file at Idaho State Historical Society
Boise, Idaho

View from northeast

Photograph 9 of 25

JUL 14 1980



SEP 22 1980

Warm Springs Historic District (1205 Warm Springs
Avenue), Site #31, Boise, Ada County, Idaho

Photograph by Duane Garrett
1978

Negative on file at Idaho State Historical Society
Boise, Idaho

View from northwest

Photograph 10 of 25

JUL 14 1980



SEP 22 1980

Warm Springs Historic District (1225, 1215 and 1205
Warm Springs Avenue) Sites #33, 32, 31
Boise, Ada County, Idaho

Photograph by Duane Garrett
1978

Negative on file at Idaho State Historical Society
Boise, Idaho

View from northeast

Photograph 11 of 25

JUL 14 1980



SEP 22 1980

Warm Springs Historic District (1505, 1503, and
1433 Warm Springs Avenue), Sites #44, 43,
and 42, Boise, Ada County, Idaho

Photograph by Duane Garrett
1978

Negative on file at Idaho State Historical Society,
Boise, Idaho

View from northeast

Photograph 12 of 25

JUL 14 1980



SEP 22 1980

Warm Springs Historic District (1621, 1615, and
1609 Warm Springs Avenue) Sites #50, 49 and 48
Boise, Ada County, Idaho

Photograph by Duane Garrett
1978

Negative on file at Idaho State Historical Society
Boise, Idaho

View from northeast

Photograph 13 of 25

JUL 14 1980



SEP 22 1980

Warm Springs Historic District (1703 Warm Springs
Avenue) Site #52
Boise, Ada County, Idaho

Photograph by Duane Garrett
1978

Negative on file at Idaho State Historical Society
Boise, Idaho

View from north

Photograph 14 of 25

JUL 14 1980



SEP 22 1980

Warm Springs Historic District (510 and 514 Warm
Springs Avenue) Sites #54 and 55
Boise, Ada County, Idaho

Photograph by Patricia Wright
1979

Negative on file at Idaho State Historical Society
Boise, Idaho

View from southeast

Photograph 15 of 25

JUL 14 1980



SEP 22 1980

Warm Springs Historic District (600 and 604 Warm
Springs Avenue) Sites #58 and 59
Boise, Ada County, Idaho

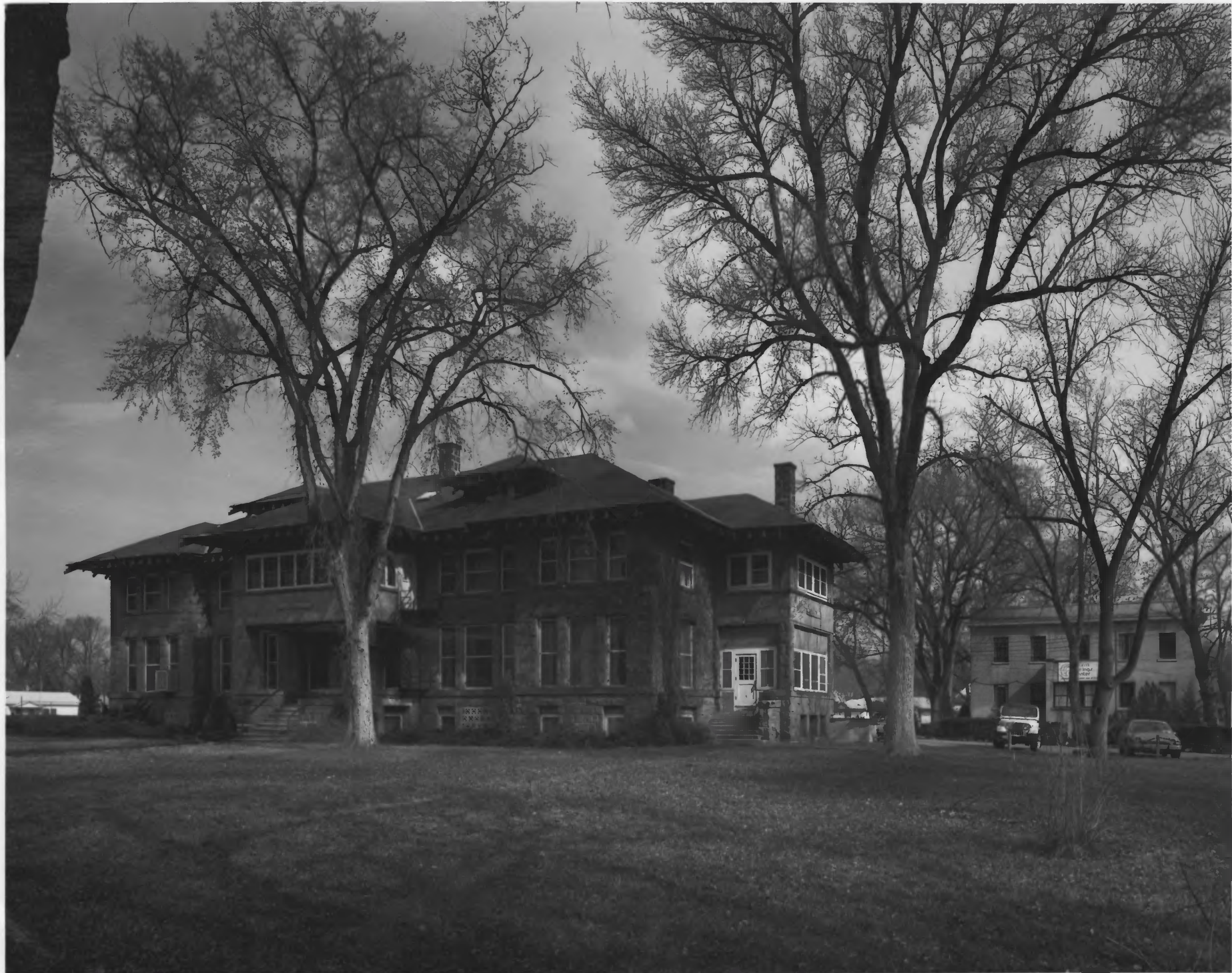
Photograph by Patricia Wright
1979

Negative on file at Idaho State Historical Society
Boise, Idaho

View from southwest

Photograph 16 of 25

JUL 14 1980



SEP 22 1980

Warm Springs Historic District (Children's Home
Funding and Aid Society), Warm Springs Avenue
at Straughn, Site #60
Boise, Ada County, Idaho

Photograph by Duane Garrett
1977

Negative on file at Idaho State Historical Society,
Boise, Idaho

View from northeast

Photograph 17 of 25

JUL 14 1980



SEP 22 1980

Warm Springs Historic District (836 Warm Springs Avenue
and 838 Warm Springs Avenue) Site #62 and 63
Boise, Ada County, Idaho

Photograph by Patricia Wright
1979

Negative on file at Idaho State Historical Society
Boise Idaho

View from southwest

Photograph 18 of 25

JUL 14 1980



SEP 22 1980

Warm Springs Historic District (904, 910, 912, and
916 Warm Springs Avenue) Sites #66, 67, 68 and 69
Boise, Ada County, Idaho

Photograph by Duane Garrett
1978

Negative on file at Idaho State Historical Society
Boise, Idaho

View from south

Photograph 19 of 25

JUL 14 1980



SEP 22 1980

Warm Springs Historic District (1010, 1016, 1020, and
1022 Warm Springs Avenue) Sites #72, 73, 74,
and 75

Boise, Ada County, Idaho

Photograph by Duane Garrett
1978

Negative on file at Idaho State Historical Society
Boise, Idaho

View from southeast

Photograph 20 of 25

JUL 14 1980



SEP 22 1980

Warm Springs Historic District (1104 and 1110 Warm
Springs Avenue) Sites #76 and 77
Boise, Ada County, Idaho

Photograph by Duane Garrett
1978

Negative on file at Idaho State Historical Society
Boise, Idaho

View from southwest

Photograph 21 of 25

JUL 14 1980



SEP 22 1980

Warm Springs Historic District (1302 and 1308 Warm
Springs Avenue), Sites #81 and #82
Boise, Ada County, Idaho

Photograph by Duane Garrett
1978

Negative on file at Idaho State Historical Society
Boise, Idaho

View from southwest

Photograph 22 of 25

JUL 14 1980



SEP 22 1980

Warm Springs Historic District (1312 Warm Springs
Avenue) Site #83
Boise, Ada County, Idaho

Photograph by Duane Garrett
1978

Negative on file at Idaho State Historical Society,
Boise, Idaho

View from south

Photograph 23 of 25

JUL 14 1980



SEP 22 1980

Warm Springs Historic District (1414 and 1418 Warm
Springs Avenue), Sites #85 and 86.
Boise, Ada County, Idaho

Photograph by Duane Garrett
1978

Negative on file at Idaho State Historical
Society, Boise, Idaho

View from southwest

Photograph 24 of 25

JUL 14 1980



SEP 22 1980

Warm Springs Historic District (1504, 1510, 1514, 1516,
and 1522 Warm Springs Avenue), Sites #89, 90,
91, 92, and 93.
Boise, Ada County, Idaho

Photograph by Duane Garrett
1978

Negative on file at Idaho State Historical Society,
Boise, Idaho

View from south

Photograph 25 of 25

JUL 14 1980