

898

United States Department of the Interior
National Park Service

National Register of Historic Places
Registration Form

This form is for use in nominating or requesting determinations for individual properties and districts. See instructions in *How to Complete the National Register of Historic Places Registration Form* (National Register Bulletin 16A). Complete each item by marking "x" in the appropriate box or by entering the information requested. If an item does not apply to the property being documented, enter "N/A" for "not applicable." For functions, architectural classification, materials, and areas of significance, enter only categories and subcategories from the instructions. Place additional entries and narrative items on continuation sheets (NPS Form 10-900a). Use a typewriter, word processor, or computer, to complete all items.

1. Name of Property

historic name Cunha, Joseph, Farmstead

other names/site number _____

2. Location

street & number 33263 Oregon Trail Road N/A not for publication

city or town Echo vicinity

state Oregon code OR county Umatilla code 059 zip code 97826

3. State/Federal Agency Certification

As the designated authority under the National Historic Preservation Act, as amended, I hereby certify that this nomination request for determination of eligibility meets the documentation standards for registering properties in the National Register of Historic Places and meets the procedural and professional requirements set forth in 36 CFR Part 60. In my opinion, the property meets does not meet the National Register criteria. I recommend that this property be considered significant nationally statewide locally. (See continuation sheet for additional comments.)

Sam Hamrick July 1, 1997
Signature of certifying official/Title Deputy SHPO Date
Oregon State Historic Preservation Office
State of Federal agency and bureau

In my opinion, the property meets does not meet the National Register criteria. (See continuation sheet for additional comments.)

Signature of certifying official/Title Date

State or Federal agency and bureau

4. National Park Service Certification

I hereby certify that the property is:

entered in the National Register. See continuation sheet.

determined eligible for the National Register. See continuation sheet.

determined not eligible for the National Register.

removed from the National Register.

other, (explain: _____)

Signature of the Keeper Date of Action 8/23/97

5. Classification

Ownership of Property

(Check as many boxes as apply)

- private, public-local, public-State, public-Federal

Category of Property

(Check only one box)

- building(s), district, site, structure, object

Number of Resources within Property

(Do not include previously listed resources in the count.)

Contributing Noncontributing
14 3 buildings
sites
structures
objects
14 3 Total

Name of related multiple property listing

(Enter "N/A" if property is not part of a multiple property listing.)

City of Echo and The Meadows Historic Resources

Number of contributing resources previously listed in the National Register

N/A

6. Function or Use

Historic Functions

(Enter categories from instructions)

Agriculture: agricultural outbuilding

Agriculture: animal facility

Domestic: single dwelling

Current Functions

(Enter categories from instructions)

cookhouse, smoke house/jail, cooling house/ woodshed, water tower, oil shed, scale house, barn, machine shop, garage, chicken coop, chicken shed, pig shed, creamery, main house

7. Description

Architectural Classification

(Enter categories from instructions)

Queen Anne, vernacular version, vernacular, utilitarian

Materials

(Enter categories from instructions)

foundation stone, concrete, walls wood, metal (aluminum siding, main house), roof wood, shingle, other asphalt, composition shingle

Narrative Description

(Describe the historic and current condition of the property on one or more continuation sheets.)

**United States Department of the Interior
National Park Service**

**National Register of Historic Places
Continuation Sheet**

Section number 7 Page 1

SUMMARY

The Cunha farm complex is associated with the Cunha family who were instrumental in developing the town of Echo and the Catholic Church. The main house was constructed in 1902 in the Queen Anne style. The house displays characteristics of the style in its asymmetrical form, overhanging eaves, multiple roof forms, gable ornament, turned balcony post, jigsaw balcony balustrade, and corbelled chimney. The farm has several outbuildings associated with the historic period that reflect the function of the farm.

SETTING

The Cunha Farm is located in the NW quarter of Section 16, T3N, R29E. The house and outbuildings are located on the north side of County Road No. 828 (Oregon Trail Road) on the west side of the Umatilla River (west of downtown Echo). Fields surround the complex on the west, north, and east, and residential buildings are south across the county road. St. Peter's Catholic Church is also located south of the farm complex. A ravine/dry creek bed separates the creamery building from the rest of the outbuildings. The main gravel driveway is on the southern edge of the property and extends through the middle of the farm complex. A fence lines both sides of the driveway.

The area surrounding the house is covered with a variety of plantings. Mature black locust trees line the south side of the farm complex and the west side of the entrance road. Black locust and cottonwoods are on the western side of the complex and divide the farm buildings from the fields. Fruit trees, a rose garden, peonies, and junipers are located in the yard surrounding the house. Other flowering shrubs are planted in the yard. A central walk extends from the front entrance to the highway and a sidewalk is also on the north side of the house. The stairway to the front entrance is flanked by brick piers.

The main house, cook house, garages, and water tower are located on the southern portion of the property, and the outbuildings associated with the farm are in the northern and eastern portion of the complex (see site plan). There are 17 buildings included in the nominated area.

United States Department of the Interior
National Park Service

National Register of Historic Places
Continuation Sheet

Section number 7 Page 2

MAIN HOUSE PLAN

The main body of the two-story residence measures approximately 34 ft. (east-west) by 40 ft. (north-south). The back kitchen extension measures approximately 40 ft. by 26 ft. Rectangular in plan, the building has an enclosed wrap-around front porch with balcony. The first floor of the interior is divided into an entrance hall with stairs to the second floor, a dining room, living room, kitchen, bedrooms, and bathrooms. The upstairs has five bedrooms and a bathroom (see floor plans).

EXTERIOR

The two-story building has a hip roof with intersecting gables surmounted with a brick corbelled chimney on the rear. The roof is sheathed with asphalt shingles. A massive external tapered chimney is located in the southeast corner of the house (built 1980). The farm's brand is on the front of the chimney defined by raised bricks. Decorative, semi-circular jigsaw gable ornaments are centered in the pedimented gables on the south, north and east elevations. A one story kitchen addition has been added to the western elevation. The addition has a hip roof sheathed with asphalt shingles. The original house has a rock foundation and the newer addition has a concrete foundation.

The wide overhanging eaves are supported with jigsaw brackets. The building is clad with metal siding installed in 1974. The majority of the windows are tall, narrow, one over one double-hung wood sash and are often paired. The windows have all been replaced with compatible wooden one over one double-hung wood sash windows (1989). The original window trim and cornerboards were removed when the house was resided. Metal frame windows are in the rear addition. A two-story boxed bay window is located on the south elevation.

The original wrap-around front porch extends around the east and north elevations of the house. The east side of the porch has been enclosed with a low wall with glass above. The original turned porch post are still intact. An upper porch surmounts the front porch. The upper porch has turned posts, a spindle frieze, and a turned balustrade. The north side of the lower porch has been enclosed with a wall to incorporate an office and part of the kitchen (1971-74). Metal windows and a door have been added to this enclosure.

United States Department of the Interior
National Park Service

National Register of Historic Places Continuation Sheet

Section number 7 Page 3

Four entrance doors (all new) are on the north elevation. One accesses the office, two access the kitchen/dining room area, one the utility room, and one the back hall. The doors to the kitchen and the utility room are flanked by wide sidelights. A hip roof covers the utility room doorway. A wooden deck and ramp has been added to the north elevation.

INTERIOR

The first floor of the house has an entrance hall, living room, dining room, kitchen, bedroom, baths, and a storage room. All the walls have been covered with sheet rock and the original trim removed. The second floor has five bedrooms and a bathroom. The house retains the original ceiling heights.

Entrance Hall

The entrance hall is a long narrow room with doorways on the south, east, and west elevations. The south French door leads to the living room, the west French door leads to the dining room, and the east door is the entrance door. The original entrance door is decorated with frosted glass in the upper portion. The room retains the original ceiling height. Oak plank flooring was installed (1989) in the hallway. The original stairway with turned newel post and balusters is on the northern wall of the hall.

Living Room and Dining Room

The door on the south side of the hall leads to the living room. This room retains its original configuration with the exception of a diagonal fireplace added (1980) in the southeast corner of the room. The walls are covered with cedar siding. A French door leads to the dining room. The dining room has doors that lead to the kitchen, the office, the entrance hall, and the living room. A door with wide sidelights (not original) is on the north elevation of the room. The door that leads to the office has the original frosted glass in the upper pane. The glass was installed in a newer door. Fir floors covered with carpet are intact in the dining and living rooms.

Kitchen, Master Bedroom, and New Addition

The kitchen was remodeled and added to in 1989. New oak cabinets and a work island are in the western portion, a utility room is in the northwest corner, and a door to the deck

United States Department of the Interior
National Park Service

National Register of Historic Places Continuation Sheet

Section number 7 Page 4

is on the north side. Vinyl covers the floors (one quarter of floor is fir under vinyl). Another door on the south side leads into a long hallway that accesses the master bedroom, the bathrooms, and storage areas.

The master bedroom, at the eastern end of the hall, was originally two smaller rooms. The wall between the two rooms was removed in 1989 when the new addition was added. Doors on the south side of the hall lead to two bathrooms and a storage room. A door at the western end of the hall leads to the back yard (see site plan).

Second Floor

The L-shaped staircase leads to the upper story. A door at the eastern end of the hall leads to the upper porch. There are five bedrooms and a bathroom upstairs. All the walls in the bedrooms and hallway have been covered with sheet rock. Five panel doors to the upstairs rooms retain the original oval hardware. The baseboards are also original.

Cellar

A small cellar is under a portion of the kitchen. The cellar is accessed by an exterior stairway west of the new deck on the north side of the house. The cellar has cement floors and walls.

ALTERATIONS

1971: Enclosed porch on north side for expanded kitchen area;
Downstairs bathroom removed and put in utility room;
Built bathroom out of two closet in back hall.

1974: Enclosed north porch to build office;
Metal siding installed.

1980: Fireplace added in living room and exterior chimney on the southeast corner of the house.

**United States Department of the Interior
National Park Service**

**National Register of Historic Places
Continuation Sheet**

Section number 7 Page 5

- 1989: Kitchen addition, build utility room off of kitchen;
Removed interior wall between the two downstairs
bedrooms;
Built new bathrooms on first floor;
Replaced windows in house with compatible wood windows;
New interior doors downstairs;
Oak plank floor installed in hall;
Sheet rock wall surfaces.

AUXILIARY BUILDINGS

Cook House (#1)-Contributing

This small house is located west of the main house and predates the Cunha House. The house was most likely built by the Tribble family; the Cunhas purchased the land from the Tribbles in 1902. The house may date from the late 1870s or early 1880s. The building was used as a residence and later a cook house.

The house is basically L-shaped in plan and has an intersecting gable roof with a rear shed. A brick chimney caps the roof. The eaves are boxed and a wide friezeboard extends around the perimeter. Shiplap siding, secured with square nails, sheaths the building. Cornerboards with caps finish with edges. The wrap-around porch has been enclosed with a low board wall and screen. Windows are four over four double-hung wood sash with a molded projecting window cap. A windows on the rear and north elevations have been altered to a four light window (historic alteration). The building has a watertable with cap and it rests on a concrete foundation. Currently used for storage, the building is in fair-good condition and has minor alterations.

Jail/Smoke House (#2)-Contributing

The small building was originally located in town of Umatilla (the first county seat) and the used as a jail. Built in 1865, the 11 ft. by 20 ft. building was moved to the Cunha farm and used as a smoke house.

**United States Department of the Interior
National Park Service**

**National Register of Historic Places
Continuation Sheet**

Section number 7 Page 6

The building has a front facing (east) gable roof and is a hand-hewn log structure joined with square notches. The logs are approximately 12' high. Vertical board planks cover the gable ends. Window openings are on the north and west sides, and a vent pipe is on the south side. The door opening is on the east side of the structure. Seven trusses on the interior frame the gable roof. Shelves have been added to the interior during its use as a smoke house. The building is in fair condition and has minor-moderate alterations.

Garage (#3)-Non-Contributing

The garage is a rectangular building and measures approximately 24 ft. by 26 ft. and was built in 1988. The corrugated metal building has a gable roof sheathed with metal roofing. Garage doors are located on the north side. A breezeway connects the building to the adjacent cooling house/wood shed.

Cooling House/Wood Shed (#4)-Contributing

The cooling house/wood shed, built ca. 1910, is located directly north of the main house. The building measures approximately 20 ft. (east-west) by 46 ft. (north-south) and is divided east-west into two rooms. The south portion was used as a cooling house and the north room was used as a wood shed. The gable roof is covered with wood shingles; a vent pipe caps the building. Drop siding finished with cornerboards sheaths the building. Two doors are located on the east elevation and one door located in the south elevation. The cooling house has double doors (one on the outside and one on the inside).

The walls of the cooling house are approximately 9' thick and are filled with sawdust. The interior walls are covered with a cementitious material. The thick, insulated wall are a function of its use as a cooling house. Multi-pane windows are located on the west elevation of the cooling house and the wood shed. The inside floors are concrete and the foundation is concrete.

**United States Department of the Interior
National Park Service**

**National Register of Historic Places
Continuation Sheet**

Section number 7 Page 7

Water Tower (#5)-Contributing

The three story water tower is a square building measuring approximately 15 ft. by 15 ft. (at base). The building has a hip roof covered with asphalt shingles. A wooden finial crowns the hip roof. The base of the tower is slightly battered and the building is clad with V-groove siding. Windows are a combination of one over one double-hung wood sash windows and fixed pane.

The entrance door is located on the south side and is covered with a hip roof clad with wood shingles. The original door is constructed with mortise and tenon joints. The first floor interior of the water tower is clad with beaded boards and the floor is tongue and groove flooring. Stairs to the second story are located in the southeast corner of the room. A ladder accesses the third floor. The original water tank is still located on the third floor. The gravity water system supplied the house with water. The structure is in good condition.

Garage (#6)-Contributing

The two car garage, built ca. 1915, is a one story building with a front facing gable roof. Wood shingles sheath the roof. The overhanging eaves are supported by brackets and the gable end has a decorative truss. The gable ends are clad with wood shingles. The exterior of the garage is covered with stucco; narrow beaded board covers the area between the garage doors. Multi-pane windows are on the west elevation. The garage has a dirt floor and the garage doors are missing. Another single access door is on the south elevation. The building is in good condition with minor alterations.

Chicken Coop (#7)-Contributing

The chicken coop, built ca. 1910, is a rectangular building and has a gable roof clad with wood shingles. Two vents top the structure. A friezeboard extends around the perimeter of the building. Drop siding finished with cornerboards clad the building. Window openings have been boarded over. A door is located on the east elevation. The interior of the building is divided into two rooms. The building is in fair condition and is vacant.

**United States Department of the Interior
National Park Service**

**National Register of Historic Places
Continuation Sheet**

Section number 7 Page 7

Shed/Chicken Coop (#8)-Contributing

The small building measures approximately 15 ft. by 15 ft. and has a gable roof covered with wood shingles. The exterior is clad with vertical board and batten siding. Window openings are on all the elevations except the north elevation and the chicken coop has a concrete foundation. The building dates from the historic period and is in poor condition.

Oil Shed (#9)-Contributing

This rectangular building has a gable roof covered with wood shingles. A vent tops the building. V-groove siding and vertical plank boards clad the building. Windows on the east side have divided lights on the upper panes. A wide sliding wood door is on the west elevation and a window opening is on the north elevation. The building is in fair condition and is currently used as an oil shed. Fuel tanks are directly west of the building. The building dates from the historic period.

Barn (#10)-Non-Contributing

The barn, constructed in 1985, has a gambrel roof covered with metal roofing. Corrugated metal siding sheaths the building which has a dirt floor. The building measures 40 ft. by 40 ft. and has a loft space above. Large siding doors are at the east and west elevations. The barn is in good condition.

Scale House (#11)-Contributing

The scale house, measuring 8 ft. by 12 ft., is a wood frame structure covered with metal siding. The structure houses the scales for the farming operations. The original scales that date from the historic period are intact. The structure is in fair-good condition.

Pig Shed (#12)-Contributing

The pig shed is a wood structure with feeding bins on the south side. The structure is in fair condition.

**United States Department of the Interior
National Park Service**

**National Register of Historic Places
Continuation Sheet**

Section number 7 Page 8

Creamery (#13)-Contributing

The L-shaped creamery building, known as the Columbia Creamery, is located east of the main farm complex on the east side of the creek/ravine. The building, pre-dates 1906, has an intersecting gable roof covered with wood shingles and boxed eaves. A slightly corbelled chimney caps the roof. Narrow drop siding finished with cornerboards sheaths the building. Windows are two over two double-hung wood sash. Two doors are located on the south elevation; the porcelain knobs are intact. The building has different foundation systems: a rock foundation, concrete, and post and beams that rests on rocks.

A simple Eastlake style front porch once extended across the front (south) of the creamery; within the past couple of years the porch has collapsed. The building is in poor condition with minor alterations.

Work Shop (#14)-Non-Contributing

The workshop, constructed in 1980, measures 50 ft. by 60 ft. The building has a shallow gable roof, metal siding and roof, wide sliding doors, and an open shelter structure on the north side.

Barn (#15)-Contributing

The barn, measuring 40 ft. by 48 ft., has a gable roof with side shed extensions. The roof is covered with wood shingles and has a wood vented cupola on its crest. Hay loft doors are located on the north end of the barn. The building is clad with drop siding which cover the 2 by 4 construction.

The barn has a central bay with two side bays. A large central opening on the north elevation leads into the central bay. The two side bays are divided into four separate smaller bays; the east bay has a hay loft above. A sliding door leads to the west bay and a single door leads to the east bay. The barn has a dirt floor.

United States Department of the Interior
National Park Service

National Register of Historic Places Continuation Sheet

Section number 7 Page 9

Machine Shop (#16)-Contributing

The machine shop is a long rectangular building and has a intersecting gable roof covered with wood shingles. The structure is clad with vertical board and batten siding; the gable ends are sheathed with shiplap siding. The western portion of the building has four open bays which open towards the north. Cars are stored in this section. The eastern part of the building has a north facing gable with a door below. A shed addition is on the east side of the north facing gable. The building has a dirt floor. A small outhouse, constructed of vertical plank siding and covered with a gable roof, is located near the southwest corner of the machine shop. The building is in fair condition.

8. Statement of Significance

Applicable National Register Criteria

(Mark "x" in one or more boxes for the criteria qualifying the property for National Register listing.)

- Criteria A, B, C, D with checkboxes and descriptions regarding property significance.

Criteria Considerations

(Mark "x" in all the boxes that apply.)

Property is:

- Criteria A through G with checkboxes and descriptions regarding property considerations.

Areas of Significance

(Enter categories from instructions)

Agriculture

Ethnic Heritage

Architecture

Period of Significance

1902-1946

Significant Dates

1902 (date of construction, main house)

Significant Person

(Complete if Criterion B is marked above)

Cunha, Joseph (1864-1950)

Cultural Affiliation

N/A

Architect/Builder

Unknown

Narrative Statement of Significance

(Explain the significance of the property on one or more continuation sheets.)

9. Major Bibliographical References

Bibliography

(Cite the books, articles, and other sources used in preparing this form on one or more continuation sheets.)

Previous documentation on file (NPS):

- Documentation checkboxes: preliminary determination, previously listed, National Register, National Historic Landmark, Historic American Buildings Survey, Historic American Engineering Record.

Primary location of additional data:

- Location checkboxes: State Historic Preservation Office, Other State agency, Federal agency, Local government, University, Other.

Name of repository:

Cunha, Joseph, Farmstead
Name of Property

Umatilla County, Oregon
County and State

10. Geographical Data

Acreage of Property 7 acres

Echo, Oregon 1:24000

UTM References

(Place additional UTM references on a continuation sheet.)

1

1	1	3	2	8	7	5	0	5	0	6	7	4	5	0
Zone	Easting				Northing									

3

Zone	Easting				Northing									

See continuation sheet

Verbal Boundary Description

(Describe the boundaries of the property on a continuation sheet.)

Boundary Justification

(Explain why the boundaries were selected on a continuation sheet.)

11. Form Prepared By

name/title Sally Donovan/Marianne Kadas

organization Marianne Kadas Consulting date December 15, 1996

street & number 3602 SE Alder Street telephone 503/238-9859

city or town Portland state OR zip code 97214

Additional Documentation

Submit the following items with the completed form:

Continuation Sheets

Maps

A **USGS map** (7.5 or 15 minute series) indicating the property's location.

A **Sketch map** for historic districts and properties having large acreage or numerous resources.

Photographs

Representative **black and white photographs** of the property.

Additional items

(Check with the SHPO or FPO for any additional items)

Property Owner

(Complete this item at the request of SHPO or FPO.)

name Mr. and Mrs. Dick Snow

street & number 33263 Oregon Trail Road telephone 541/376-8438

city or town Echo state OR zip code 97826

Paperwork Reduction Act Statement: This information is being collected for applications to the National Register of Historic Places to nominate properties for listing or determine eligibility for listing, to list properties, and to amend existing listings. Response to this request is required to obtain a benefit in accordance with the National Historic Preservation Act, as amended (16 U.S.C. 470 *et seq.*).

Estimated Burden Statement: Public reporting burden for this form is estimated to average 18.1 hours per response including time for reviewing instructions, gathering and maintaining data, and completing and reviewing the form. Direct comments regarding this burden estimate or any aspect of this form to the Chief, Administrative Services Division, National Park Service, P.O. Box 37127, Washington, DC 20013-7127; and the Office of Management and Budget, Paperwork Reductions Projects (1024-0018), Washington, DC 20503.

United States Department of the Interior
National Park Service

National Register of Historic Places Continuation Sheet

Section number 8 Page 1

STATEMENT OF SIGNIFICANCE FOR THE CUNHA FARMSTEAD

The Cunha Farmstead is significant under Criterion A for its association with the development of transportation and agriculture in the Echo and Meadows area. This development followed the completion of the Union Pacific railroad line through Echo in 1884 and allowed for the movement of cattle, sheep, grain, and other agricultural products to markets in many parts of the United States. Rail transportation continued to be a major source of business and income in Echo through the 1940s when new highway construction and improvements in barge traffic on the Columbia River signaled major changes in transportation patterns and the eclipse of the railroad.

The Cunha Farmstead is also significant under Criterion B for its association with the Cunha family. Joseph Cunha moved to Echo in 1885, settling with another family from his native country. Cunha became one of the biggest land holders in the Echo area and developed businesses in Echo including the Bank of Echo and owned the Henrietta Flour Mills at one time. The Cunha family also donated land for the construction of the Catholic Church (St. Peter's, built in 1913) and contributed to the building fund of the Portuguese Colonial Revival style church. The farm is still owned and operated by members of the Cunha family.

The Cunha Farmstead is also significant under Criterion C as an excellent example of an intact farm complex. The farm has 17 buildings on the site; 14 of the buildings were used within the historic period. The complex includes the main Queen Anne style house, an older vernacular style residence, a smokehouse (originally a jail), a wood shed/cooling house, a water tower, a garage, chicken coop, two sheds, a scale house, pig shed, a creamery barn, and a machine shop. All these buildings are important in the operations of the farm. The buildings have had minor alterations with the exception of the main house which has been re-sided.

Joseph Cunha, (1864-1950) was born in the Azores, a Portuguese island colony, in 1864. He left the Azores in 1883 and traveled as a stowaway aboard a ship bound for the United States. Upon his arrival, he worked on the East Coast, in Rhode Island and later in Vermont for a year. At that time he came to the West Coast, to San Francisco and worked there for a year. While in California he heard of a countryman, Antone Vey, who

United States Department of the Interior
National Park Service

National Register of Historic Places Continuation Sheet

Section number 8 Page 2

lived near Echo. He came to Portland by boat and from there traveled to Pendleton, arriving in 1885. He finally reached the Vey ranch near Butter Creek after traveling by stage coach and on foot for the last ten miles. Cunha worked at the Vey ranch for three years; at that time sheep ranching was very popular in the area and he became an expert on the subject. He also saved enough money to buy a band of 1,200 sheep and took up a homestead four miles east of Butter Creek.

In 1891 he married Ryta Mandonca, a native of Portugal. The couple had nine children; three died in infancy, and one son, Frank, was killed by a train. There were five surviving children.

Over the years, Cunha added to his land holdings and at one time owned 64,000 acres, including land in the Blue Mountains where his sheep and cattle were taken to summer pasture. In 1902 the family built a large home with many outbuildings just west of the Umatilla River near the bridge.

In 1913 Cunha donated land on the west side of the Umatilla River for St. Peter's Catholic Church. He and his family also were generous contributors to the construction of the building itself. Cunha's fortunes prospered; in 1920 he built the small, but elegant Bank of Echo, now listed on the National Register of Historic Places, and around that time purchased the Henrietta Flour Mills, changing the name to the Echo Flour Mills. The Bank of Echo was one of the few that did not close after the financial crash in 1929; it was sold in 1933 to another bank, at which time it was still solvent. The bank operated as a cash exchange for several years before going into private ownership. It is now used as a museum. After purchasing the Henrietta Flour Mills from Swift and Company, members of the Cunha family ran the mill as a flour mill for a time, then converted it to grain for livestock feed and used some of the mill space for wool storage. Paint, coal, and livestock salt and other supplies were for sale at the mill. In 1954 the mill was sold to Pendleton Grain Growers and was in operation for three years before closing in 1957. It was demolished in 1965. The Cunha family is responsible for many of the large and notable gravestones in the Echo Cemetery.

The Cunha Farmstead is owned by descendants of Joseph and Ryta Cunha. Many of the original buildings from its early construction are still standing and in use.

United States Department of the Interior
National Park Service

National Register of Historic Places
Continuation Sheet

Section number 9 Page 1

BIBLIOGRAPHY

- Asay, Jeff. Union Pacific, Northwest, A History. Edmonds, Washington: Pacific Fast Mail, 1991.
- Alt, David D. and Donald W. Hyndman. Roadside Geology of Oregon. Missoula, Montana: Mountain Press Publishing Company, 1991.
- Berry, Diane. History of the Echo Area. City of Echo and the Echo Community Boosters, 1993.
- Corning, Howard McKinley. Dictionary of Oregon History. Portland, Oregon: Binford and Mort, 1989.
- Lewty, Peter J. To the Columbia Gateway. Pullman, Washington: Washington State University, 1987.
- Loy, William G. Atlas of Oregon. University of Oregon Press, 1976.
- McArthur, Lewis A. Oregon Geographic Names. Ann Arbor, Michigan: Edwards Brothers, 1981.
- Macnab, Gordon, editor. East Oregonian, 1875-1975. East Oregonian Publishing Company, 1975.
- Oliphant, Orin J. On the Cattle Ranges of the Oregon Country. Seattle, Washington: University of Washington Press, 1968.
- Parsons, Col. William and W. S. Shiach. Illustrated History of Umatilla and Morrow Counties. Spokane, Washington, W.A. Lever, 1902.
- Ruby, Robert H. and John A. Brown. A Guide to the Indian Tribes of the Pacific Northwest. Norman, Oklahoma: University of Oklahoma Press, 1981.
- Statewide Inventory of Historic Sites and Buildings. Oregon Department of Transportation, Umatilla County, 1986.
- Tolar, Bennie Lee Middleton. Echoes From the Past. 1980.
Umatilla County Historical Society. Umatilla County, A Backward Glance. Umatilla County Historical Society, 1980.
- Victor, Frances Fuller. The River of the West. Missoula, Montana: Mountain Press Publishing Company, 1983.
- Winther, Oscar Osborn. The Great Northwest. New York: Alfred A. Knopf, 1952.
- Works Progress Administration. Oregon Historical Records Survey Project. 1937-1942.
- Wright, Patricia and Lisa B. Reitzes. "Tourtellotte & Hummel of Idaho".

United States Department of the Interior
National Park Service

National Register of Historic Places Continuation Sheet

Section number 9 Page 2

“A Handbook of Information Regarding Umatilla County, the Richest Agricultural
County in the State of Oregon”.

Echo News. Echo, Oregon: 12/25/36.

Hermiston Herald. Hermiston, Oregon: 9/17/36.

**United States Department of the Interior
National Park Service**

**National Register of Historic Places
Continuation Sheet**

Section number 10 Page 1

Boundary Description

The nominated property is located in SW 1/4 NW 1/4 Section 16, Township 3 North, Range 29 East of the Willamette Meridian, in Umatilla County, Oregon. It is a fraction of Tax Lot 1600 at said location, and is described as follows.

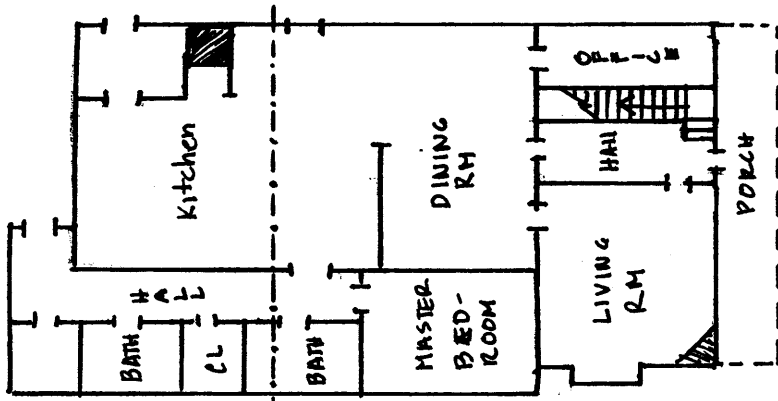
Beginning at the point of intersection of the west boundary of Section 16, T.3N., R.29E., W.M., and the north edge of the Heppner-Echo County Road (Oregon Trail Road), thence northeasterly along the north edge of said road approximately 500 feet to the true point of beginning; thence northwesterly at a right angle to the road approximately 600 feet; thence northeasterly at a right angle 500 feet, bowing 50 feet to the north for the last 250 feet or so to include the historic barn; thence southeasterly at a right angle approximately 650 feet to the north edge of the road; thence southwesterly along the north edge of the road approximately 500 feet to the true point of beginning, containing in all seven acres, more or less, to encompass 14 buildings used during the historic period of significance, as follows.

<u>Building</u>	<u>Map/Inventory Key No.</u>	<u>Documented date</u>
1. Main house	(no number assigned)	1902
2. Cook house	#1	1880s
3. Smokehouse/jail	#2	1865
4. Woodshed/cooler	#4	c. 1910
5. Water tower	#5	
6. Garage	#6	1915
7. Chicken coop	#7	c. 1910
8. Chicken shed	#8	
9. Oil shed	#9	
10. Scale house	#11	
11. Pig shed	#12	
12. Creamery	#13	c. 1900
13. Barn	#15	
14. Machine shop	#16	

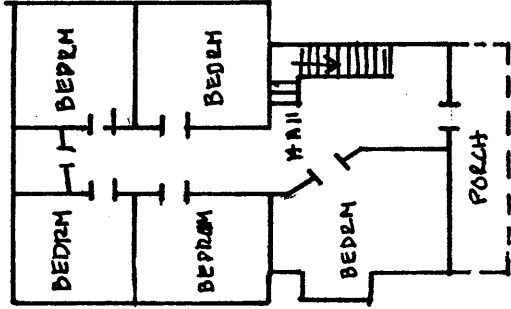
Boundary Justification

The bounds of the 7-acre nominated area are drawn to encompass the 14 contributing features listed above and their functional setting which make up a portion of the 42.32-acre Tax Lot 1600.

CUNHA FARM

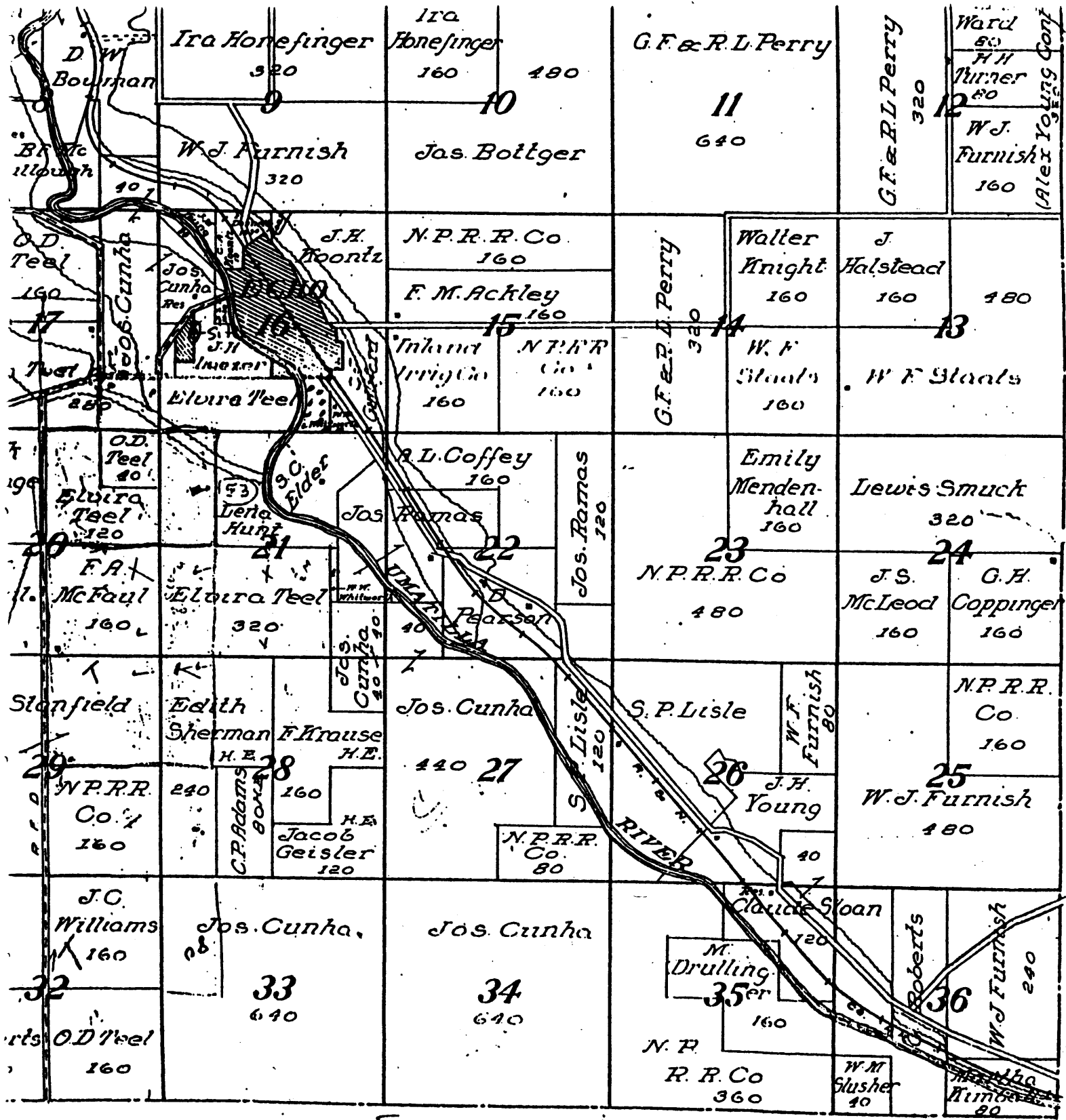


FIRST FLOOR



SECOND FLOOR

NOT TO SCALE



Berry's site

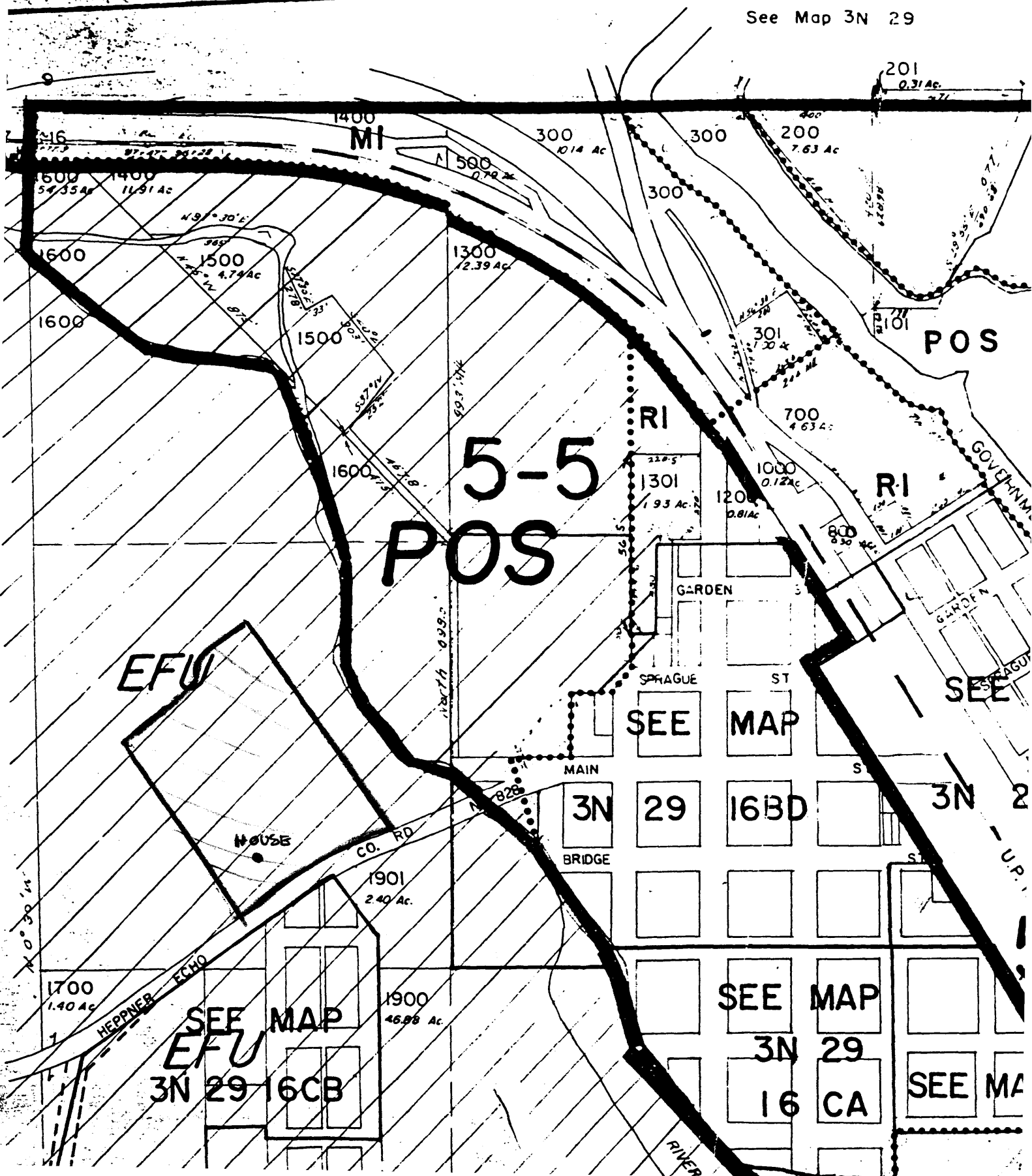
Echo M. 1st 7
-3

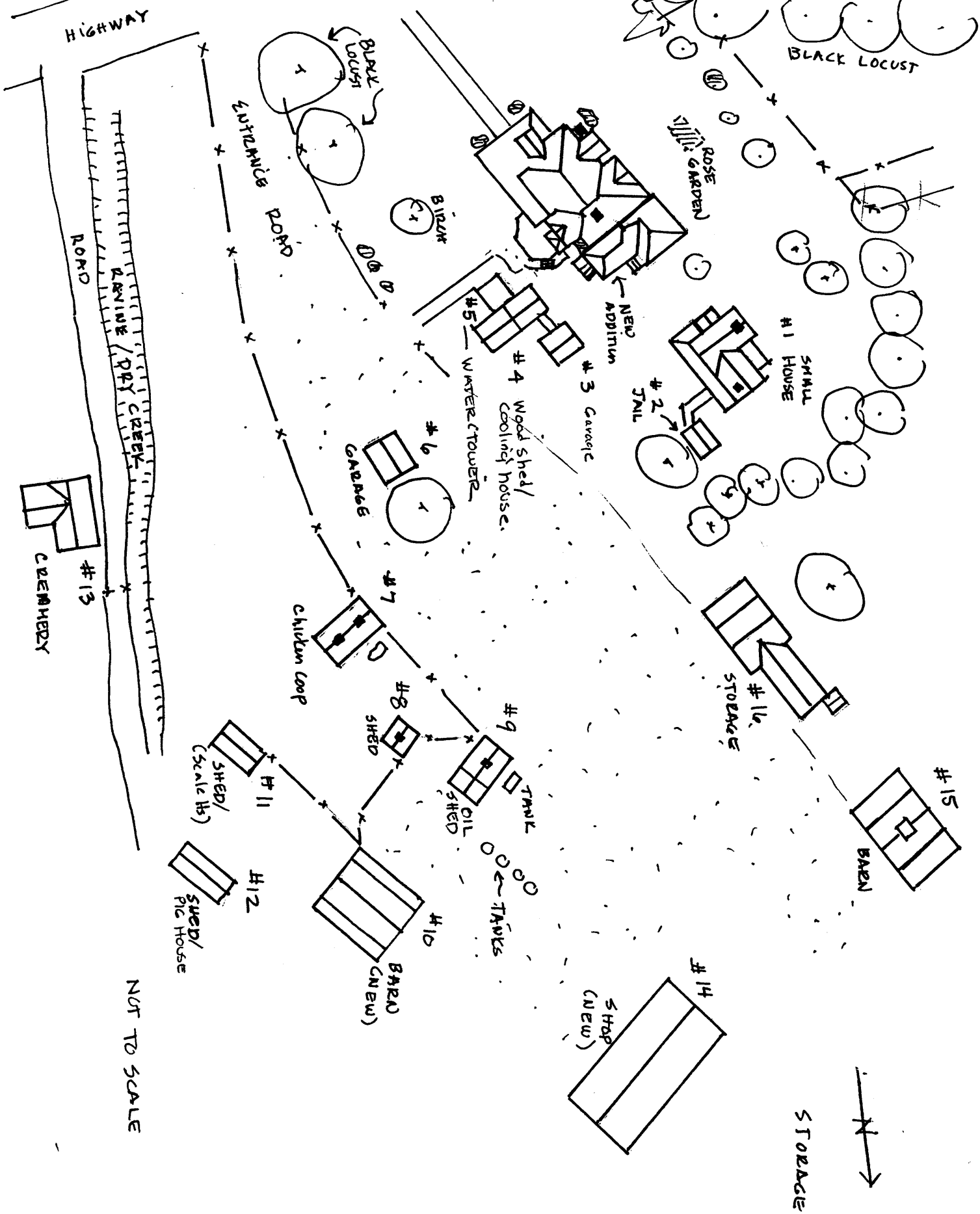
URBAN GROWTH BOUNDARY
CITY LIMITS
ZONING BOUNDARY
FLOOD HAZARD ZONE

3N 29 16

F.1

See Map 3N 29





Fields

NOT TO SCALE

STORAGE

United States Department of the Interior
National Park Service

**National Register of Historic Places
Continuation Sheet**

Section number Photo Page 1

The following information is submitted for all photographs:

Property: Cunha Farm
Address: 33263 Ore Trail Road
 Echo, Umatilla Co., Oregon 97826
Photographer: Sally Donovan
Date: June 1996
Negatives: Marianne Kadas
 3602 SE Alder
 Portland, OR. 97214

Photographs:

Photo #1: General view of farm from county road, looking west.
Photo #2: Front (east) elevation, looking west.
Photo #3: South elevation, looking northwest
Photo #4: West elevation; looking east.
Photo #5: North elevation, looking south.
Photo #6: Interior view of hardware, upstairs door knob.
Photo #7: Interior view door to office with original etched glass pane.
Photo #8: Cook House (#1), front (east) elevation, looking west.
Photo #9: Cook House (#1), side (south) elevation, looking north.
Photo #10: Jail Building (#2), east elevation.
Photo #11: Cooling House and wood shed (#4), east elevation.
Photo #12: Water tower (#5), east and south elevations.

United States Department of the Interior
National Park Service

**National Register of Historic Places
Continuation Sheet**

Section number Photo Page 1

- Photo #13: Garage (#6), east elevation, looking southwest.
- Photo #14: Garage (#6), west elevation, looking southeast.
- Photo #15: Chicken Coop (#7), east and south elevations.
- Photo #16: Oil Shed (#9), east and south elevations.
- Photo #17: Oil Shed (#9), north elevation.
- Photo #18: Creamery Building (#13), south elevation.
- Photo #19: Barn (#15), north and east elevations.
- Photo #20: Machine Shed (#16), north elevation.