



UNITED STATES  
GEORGETOWN  
40324

LOCAL

Georgetown East Main Street  
Residential District  
Georgetown, Scott County  
Kentucky

Du<sup>e</sup> JUN 7 1978

Public Information Photographer  
Department of Public Information  
Frankfort, KY  
June 1976

46  
Photo 1. Georgetown Post Office,  
view from southeast.

JAN 16 1978



Georgetown East Main Street  
Residential District  
Georgetown, Scott County  
Kentucky

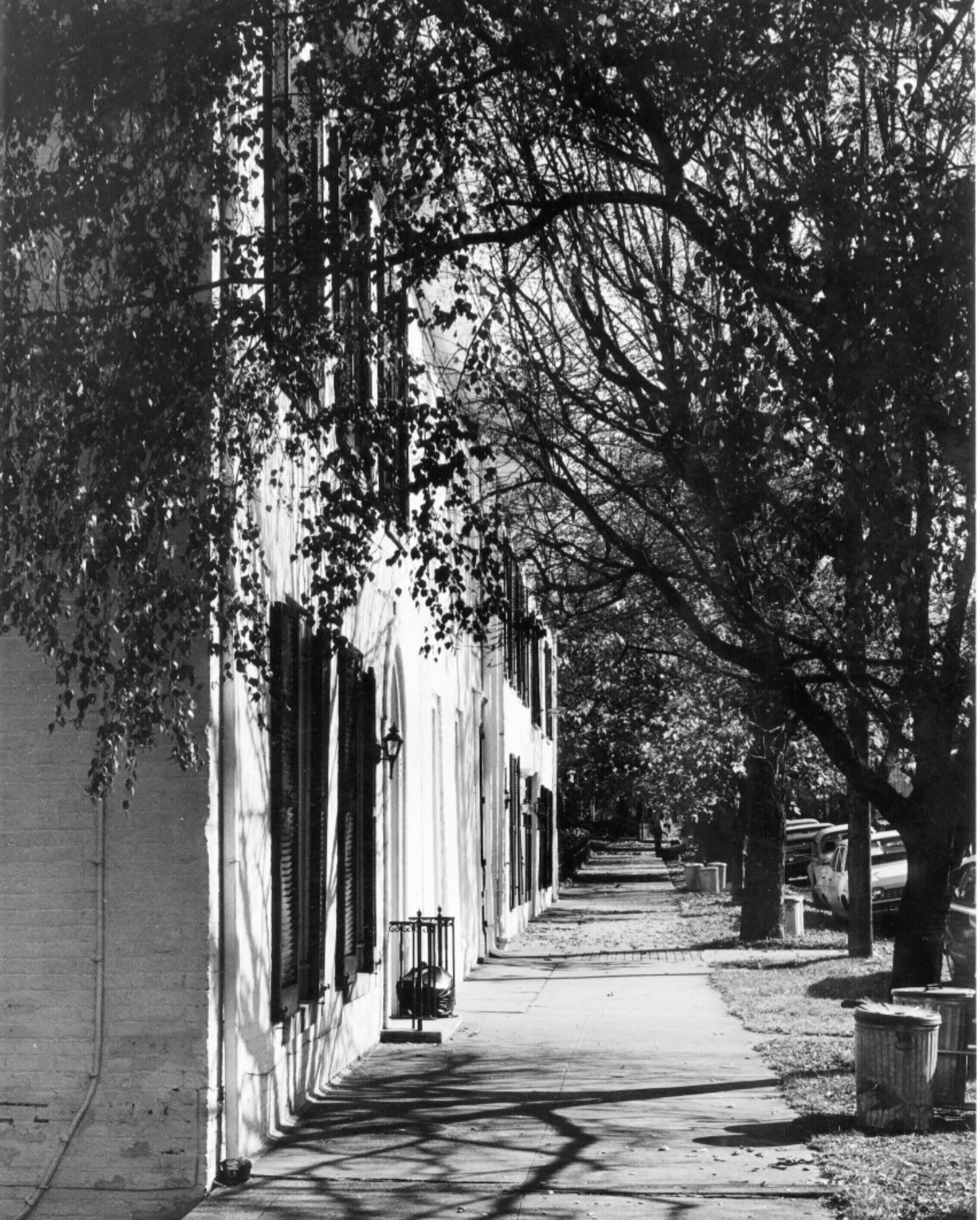
Public Information Photographer  
Department of Public Information  
Frankfort, KY  
June 1976

JUN 7 1978

Doc

Photo 2.<sup>246</sup> North side of Main  
Street facing east. Presbyterian  
Church on far left; church annex  
to the right. JAN 16 1978





Georgetown East Main Street  
Residential District  
Georgetown, Scott County  
Kentucky

Gloria Mills  
Kentucky Heritage Commission  
Frankfort, KY  
October 1975

JUN 7 1978

DUE

Photo 3. <sup>846</sup> Looking east, Emison  
House at far left; Eastham House  
is beyond the arched entrance.

JAN 16 1978



Georgetown East Main Street  
Residential District  
Georgetown, Scott County  
Kentucky

---

Gloria Mills  
Kentucky Heritage Commission  
Frankfort, KY  
October 1975

106 JUN 7 1978

---

Photo 4. <sup>846</sup> Looking east; Mahoney  
House in center; Green House  
at far right. JAN 16 1978





Georgetown East Main Street  
Residential District  
Georgetown, Scott County  
Kentucky

Public Information Photographer  
Department of Public Information  
Frankfort, KY  
June 1976

Doc  
JUN 7 1978

Photo 5. <sup>846</sup> Shropshire House,  
No. 8, viewed from southwest.

JAN 16 1978



Georgetown East Main Street  
Residential District  
Georgetown, Scott County  
Kentucky

---

Public Information Photographer  
Department of Public Information  
Frankfort, KY  
June 1976

JUN 7 1978

Photo 6. <sup>246</sup> The Offutt House,  
No. 9, viewed from southwest.

JAN 16 1978





Georgetown East Main Street  
Residential District  
Georgetown, Scott County  
Kentucky

---

Ann Bevins  
Route 4, Lexington Pike  
Georgetown, Kentucky  
1973

246 D<sup>6E</sup> JUN 7 1978

---

Photo 7. Oldham House, No. 10,  
viewed from southeast. Offutt  
House to the left.

JAN 16 1978

---





Georgetown East Main Street  
Residential District  
Georgetown, Scott County  
Kentucky

---

Ann Bevins  
Route 4, Lexington Pike  
Georgetown, Kentucky  
1973

Due JUN 7 1978

---

Photo 8. <sup>846</sup> South facade of the  
Heizer House, No. 11.

JAN 16 1978





Georgetown East Main Street  
Residential District  
Georgetown, Scott County  
Kentucky

---

Ann Bevins  
Route 4, Lexington Pike  
Georgetown, Kentucky  
1973

Duc

JUN 7 1978

---

Photo 9. <sup>446</sup> The Drake House,  
No. 12, viewed from southeast.

JAN 16 1978

---



Georgetown East Main Street  
Residential District  
Georgetown, Scott County  
Kentucky

---

Ann Bevins  
Route 4, Lexington Pike  
Georgetown, Kentucky  
1973

✓ JUN 7 1978

Photo 10. <sup>246</sup> Smith House, No. 13,  
viewed from southwest.

JAN 16 1978





Georgetown East Main Street  
Residential District  
Georgetown, Scott County  
Kentucky

D<sup>6</sup> JUN 7 1978

Ann Bevins  
Route 4, Lexington Pike  
Georgetown, KY  
1973

446

Photo 11. South facade of  
John B. Graves House, No. 14.

JAN 16 1978





Georgetown East Main Street  
Residential District  
Georgetown, Scott County  
Kentucky

Ann Bevins  
Route 4, Lexington Pike  
Georgetown, Kentucky  
1973

Photo 12. <sup>046</sup> View of the Shuff  
House, No. 15, from southeast.

JAN 16 1978

Doc  
JUN 7 1978





Georgetown East Main Street  
Residential District  
Georgetown, Scott County  
Kentucky

Gloria Mills  
Kentucky Heritage Commission  
Frankfort, Kentucky  
October 1975

JUN 7 1978 <sup>Doc</sup>

Photo 13. <sup>846</sup> View from southeast.  
Grover House at right.

JAN 16 1978





Georgetown East Main Street  
Residential District  
Georgetown, Scott County  
Kentucky

---

Ann Bevins  
Route 4, Lexington Pike  
Georgetown, Kentucky  
1973

*Doc*  
JUN 7 1978

*046*  
Photo 14. South facade of  
Smetanko House.

JAN 16 1978

*17*





Georgetown East Main Street  
Residential District  
Georgetown, Scott County  
Kentucky

---

Ann Bevins  
Route 4, Lexington Pike  
Georgetown, Kentucky  
1973

JUN 7 1978

Photo 15. <sup>846</sup> May House, No. 18,  
viewed from southeast.

JAN 16 1978



Georgetown East Main Street  
Residential District  
Georgetown, Scott County  
Kentucky

---

Ann Bevins  
Route 4, Lexington Pike  
Georgetown, Kentucky  
1973

26 JUN 7 1978

---

Photo 16. <sup>846</sup> Watson House, No. 19,  
viewed from southeast.

JAN 16 1978





Georgetown East Main Street  
Residential District  
Georgetown, Scott County  
Kentucky

JUN 7 1978

1266

Ann Bevins  
Route 4, Lexington Pike  
Georgetown, Kentucky  
1973

Photo 17. <sup>846</sup> Bryan House, No. 20,  
south facade.

JAN 16 1978



Georgetown East Main Street  
Residential District  
Georgetown, Scott County  
Kentucky

JUN 7 1978

Doc

Ann Bevins  
Route 4, Lexington Pike  
Georgetown, Kentucky  
1973

Photo 18. <sup>046</sup> Gatewood House, No. 21,  
viewed from southeast.

JAN 16 1978

21





Georgetown East Main Street  
Residential District  
Georgetown, Scott County  
Kentucky

JUN ?

1978

266

Public Information Photographer  
Department of Public Information  
Frankfort, KY  
June 1976

246

Photo 19. South facade of  
H. C. Blackburn House, No. 22.

JAN 16 1978





Georgetown East Main Street  
Residential District  
Georgetown, Scott County  
Kentucky

Gloria Mills  
Kentucky Heritage Commission  
Frankfort, Kentucky  
October 1975

JUN 7 1978

DUE

Photo 20. <sup>46</sup> William H. Moody  
House, No. 23, viewed from  
southwest.

JAN 16 1978



Georgetown East Main Street  
Residential District  
Georgetown, Scott County  
Kentucky

Gloria Mills  
Kentucky Heritage Commission  
Frankfort, Kentucky  
October 1975

JUN 7

*DE*  
1978

*846*  
Photo 21. South facade of  
Michael Goddard House, No. 24.

JAN 16 1978





Georgetown East Main Street  
Residential District  
Georgetown, Scott County  
Kentucky

Gloria Mills  
Kentucky Heritage Commission  
Frankfort, Kentucky  
October 1975

JUN 7 1978

Doc

846  
Photo 22. South facade of  
Philemon E. Mitchell House,  
No. 25.

JAN 16 1978





RENOVATION OF & ADDITION TO  
SCOTT COUNTY PUBLIC LIBRARY

---

PAUL J. KISSEL - *Architect*  
CONLEYTON & NEAL - CONSULTING ENGINEERS  
JOSEPH L. ROUGE - STRUCTURAL ENGINEERS  
GEISLER-RODERS & ASSOC. - SOIL ENGINEERS  
A.P. CONSTRUCTION CO. - GENERAL CONTRACTOR  
DINSMORE & SON - MECHANICAL CONTRACTOR  
J.D. HARNETT & SON - ELECTRICAL CONTRACTOR

VICTOR BRADLEY  
MEMORIAL LIBRARY  
FOR CHILDREN

NO PARKING  
IN ANY  
TIME OF  
DAY



Georgetown East Main Street  
Residential District  
Georgetown, Scott County  
Kentucky

---

Public Information Photographer  
Department of Public Information  
Frankfort, KY  
June 1976

JUN 7 <sup>DUE</sup> 1978

---

Photo 23. <sup>846</sup> Scott County Public  
Library, No. 26, viewed from  
northeast.

JAN 16 1978

---



CLTON PRYCE & ASSOCIATES  
CONSULTING ENGINEERS  
500  
E. MAIN ST.

Georgetown East Main Street  
Residential District  
Georgetown, Scott County  
Kentucky

---

Public Information Photographer  
Department of Public Information  
Frankfort, KY  
June 1976

A36 JUN 7 1978 Dec 6

---

Photo 24. Owens House, No. 27,  
viewed from northwest.

JAN 16 1978





TOM PRICE & ASSOCIATES  
CONSULTING ENGINEERS


300  
E. MAIN ST.  
INC.

Georgetown East Main Street  
Residential District  
Georgetown, Scott County  
Kentucky

Public Information Photographer  
Department of Public Information  
Frankfort, KY  
June 1976

JUN 7 1978

206

25846  
Photo  John Elliott House,  
No. 28, in center of house.  
Owens House to the right. View  
from northwest.

JAN 16 1978



own  
train

Georgetown East Main Street  
Residential District  
Georgetown, Scott County  
Kentucky

Public Information Photographer  
Department of Public Information  
Frankfort, KY  
June 1976

JUN 7 1978

Doc

Photo 26<sup>046</sup> East side of the  
McKnight Apartment Building,  
No. 29.

JAN 16 1978





Georgetown East Main Street  
Residential District  
Georgetown, Scott County  
Kentucky

Public Information Photographer  
Department of Public Information  
Frankfort, KY  
June 1976

JUN 7 1978 Due

Photo 27. <sup>846</sup> The Allegaire House,  
No. 30, viewed from northeast.  
Original section is on the right.

JAN 16 1978



GEORGETOWN COLLEGE  
ADMISSIONS AND DEVELOPMENT

226

Georgetown East Main Street  
Residential District  
Georgetown, Scott County  
Kentucky

Public Information Photographer  
Department of Public Information  
Frankfort, KY  
June 1976

JUN 7 1978 <sup>246</sup>

Photo 28. <sup>846</sup> North facade of  
the Tarleton House, No. 31.

JAN 16 1978





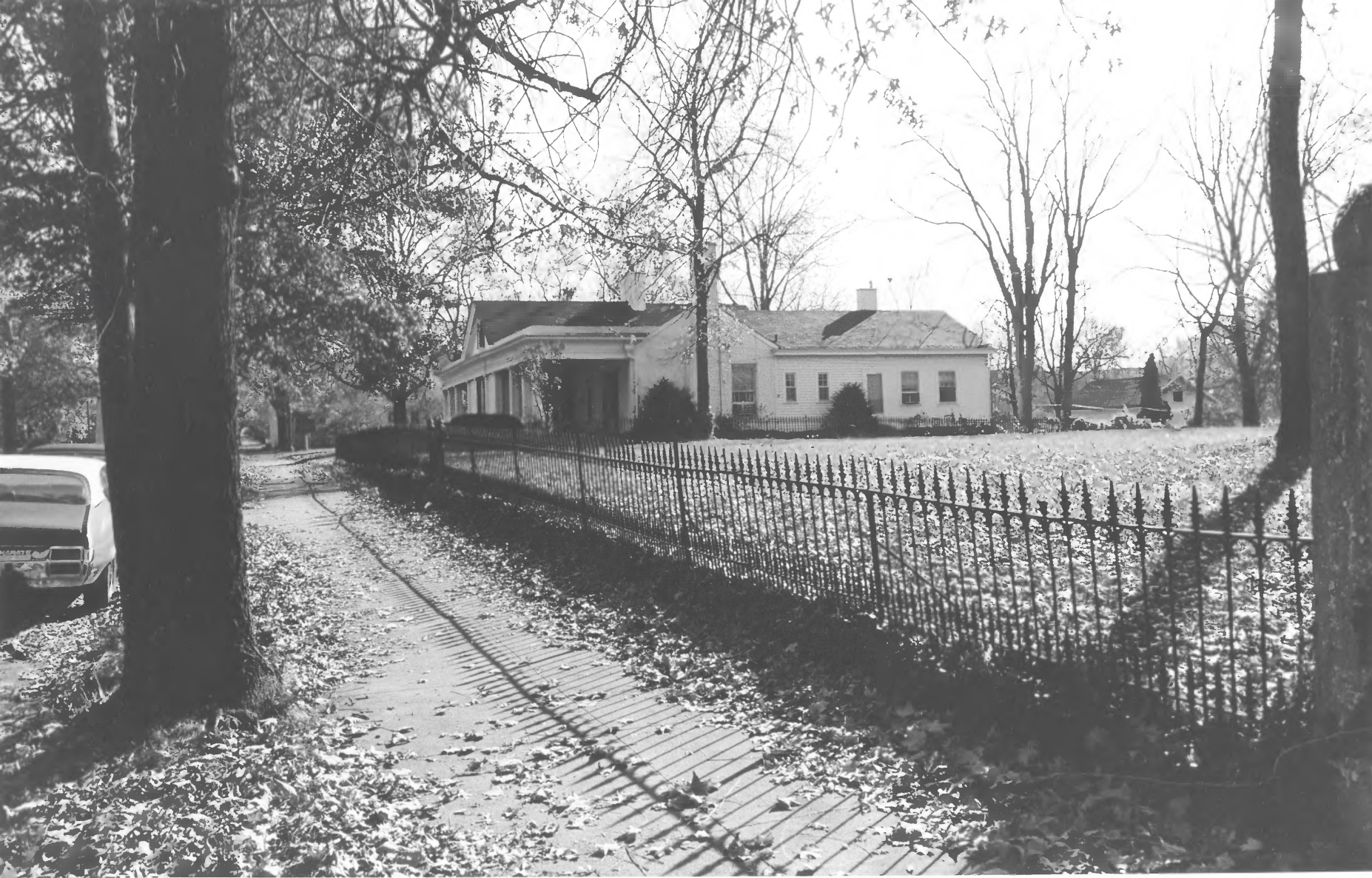
Georgetown East Main Street  
Residential District  
Georgetown, Scott County  
Kentucky

Public Information Photographer  
Department of Public Information  
Frankfort, KY  
June 1976

JUN 7 1978 <sup>26'</sup>

Photo 29. <sup>46</sup> Gragg House, No. 32,  
viewed from northeast.

JAN 16 1978





Georgetown East Main Street  
Residential District  
Georgetown, Scott County  
Kentucky

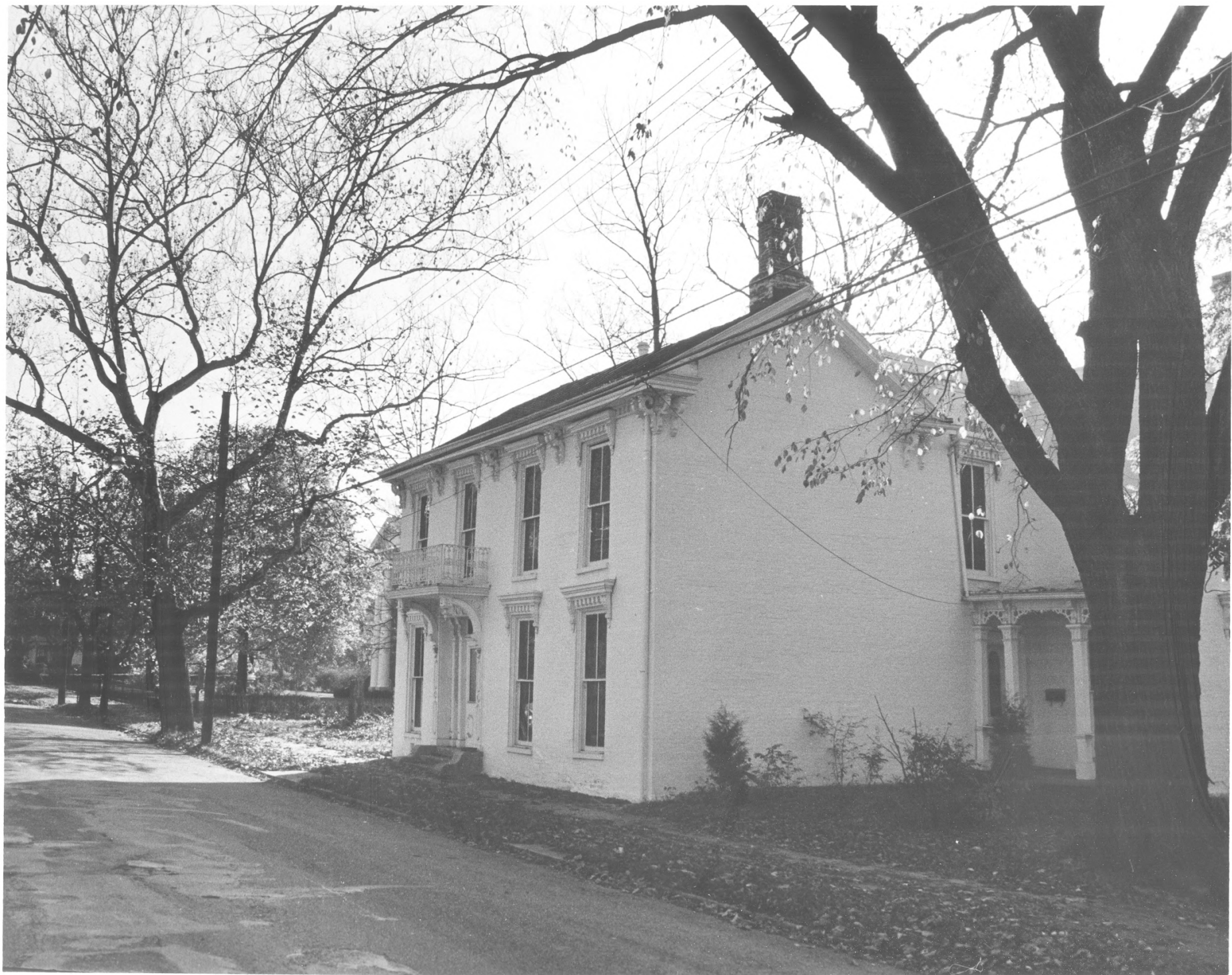
Gloria Mills  
Kentucky Heritage Commission  
Frankfort, KY  
October 1975

JUN 7 1978

846  
Photo 30. View of James W.  
Grant House, No. 33, taken from  
the east.

JAN 16 1978





Georgetown East Main Street  
Residential District  
Georgetown, Scott County  
Kentucky

JUN 7 1978

Gloria Mills  
Kentucky Heritage Commission  
Frankfort, KY  
October 1975

g 46

Photo 31. East and north (front)  
sides of Rankin House, No. 34,  
looking southwest.

JAN 16 1978





Georgetown East Main Street  
Residential District  
Georgetown, Scott County  
Kentucky

Public Information Photographer  
Department of Public Information  
Frankfort, KY  
June 1976

Doc JUN 7 1978

846

Photo 32. Rankin House slave  
quarters in rear of residence.

JAN 16 1978



Georgetown East Main Street  
Residential District  
Georgetown, Scott County  
Kentucky

Gloria Mills  
Kentucky Heritage Commission  
Frankfort, KY  
October 1975

Doc  
JUN 7 1978

46

Photo 33. Looking east with  
Harvey C. Graves House, No. 35,  
at the left, Rankin House, No. 34,  
at right.

JAN 16 1978





Georgetown East Main Street  
Residential District  
Georgetown, Scott County  
Kentucky

Gloria Mills  
Kentucky Heritage Commission  
Frankfort, KY  
October 1975

*Duc*

JUN 7 1978

**846**

Photo 34. South facade of Dr.  
John A. Lewis House, No. 36.

JAN 16 1978



E. MAIN ST.

CHAMBERS AV.

Georgetown East Main Street  
Residential District  
Georgetown, Scott County  
Kentucky

J<sup>u</sup> JUN 7 1978

Gloria Mills  
Kentucky Heritage Commission  
Frankfort, KY  
October 1975

3 46  
Photo 35. North facade of the  
Laura Rankin House, No. 37.

JAN 16 1978







Georgetown East Main Street  
Residential District  
Georgetown, Scott County  
Kentucky

Ann Bevins  
Route 4, Lexington Pike  
Georgetown, Kentucky  
1973

846 *Dé* JUN 7 1978  
Photo 36. North facade of the  
G. H. Nunnally House, No. 38.

JAN 16 1978



Georgetown East Main Street  
Residential District  
Georgetown, Scott County  
Kentucky

JUN 7 1978

Dec 1

Ann Bevins  
Route 4, Lexington Pike  
Georgetown, Kentucky  
1973

Photo 37. <sup>246</sup> View of the Oscar  
Carrick House from southeast.

JAN 16 1978

21





Georgetown East Main Street  
Residential District  
Georgetown, Scott County  
Kentucky

JUN 7 1978

DUG

Ann Bevins  
Route 4, Lexington Pike  
Georgetown, Kentucky  
1973

846

Photo 38. The Ward House, No.  
40, viewed from southeast.

JAN 16 1978



Georgetown East Main Street  
Residential District  
Georgetown, Scott County  
Kentucky

JUN 7

1978  
JUL

Ann Bevins  
Route 4, Lexington Pike  
Georgetown, Kentucky  
1973

Photo 39. <sup>846</sup> South facade of the  
Betty Ware House, No. 41.

JAN 16 1978





Georgetown East Main Street  
Residential District  
Georgetown, Scott Coutny  
Kentucky

*Due* JUN 7 1978

Ann Bevins  
Route 4, Lexington Pike  
Georgetown, Kentucky  
1973

Photo 40. James F. Beatty  
House, northeast view.

JAN 16 1978



Georgetown East Main Street  
Residential District  
Georgetown, Scott County  
Kentucky

*Ju* JUN 7 1978

Ann Bevins  
Route 4, Lexington Pike  
Georgetown, Kentucky  
1973

Photo 41. <sup>946</sup> St. John's Roman  
Catholic Church, No. 43, viewed  
from northwest.

JAN 16 1978





Georgetown East Main Street  
Residential District  
Georgetown, Scott County  
Kentucky

---

Ann Bevins  
Route 4, Lexington Pike  
Georgetown, Kentucky  
1973

JUN 7 1978

266

42846

Photo ~~88 a.~~ South facade of the  
James W. Grant House, No. 33.

JAN 16 1978



Georgetown East Main Street  
Residential District  
Georgetown, Scott County  
Kentucky

*De* JUN 7 1978

Gloria Mills  
Kentucky Heritage Commission  
Frankfort, KY  
October 1975

JAN 16 1978

*g46*  
Photo 43. Looking east down south  
side of Main Street. Building No.  
46 is at far left, No. 45 is in  
center, St. John's Catholic Church  
at far right.







Georgetown East Main Street  
Residential District  
Georgetown, Scott County  
Kentucky

Doc JUN 7 1978

Gloria Mills  
Kentucky Heritage Commission  
Frankfort, KY  
October 1975

g46

Photo 44. The Will Rankin,  
No. 46, viewed from the  
northwest.

JAN 16 1978



Georgetown East Main Street  
Residential District  
Georgetown, Scott County  
Kentucky

Doc

JUN 7 1978

Public Information Photographer  
Department of Public Information  
Frankfort, KY  
June 1976

846

Photo 45. The Steffee-Spears, No. 47,  
House viewed from the northeast.

JAN 16 1978







Georgetown East Main Street  
Residential District  
Georgetown, Scott County  
Kentucky

700 JUN 7 1978

Public Information Photographer  
Department of Public Information  
Frankfort, KY  
June 1976

Photo 42. Rectory of St. John's,  
No. 44, viewed from northeast.

846

JAN 16 1978