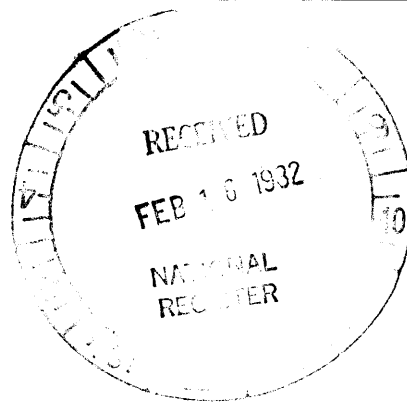


8. IREDELL P. VAUGHAN HOUSE
409 Wilson St.



Dr. Thomas Patton and Martha M. Patton
P. O. Drawer W. East
Tuscaloosa, AL 35401

Lot 77. Tax Map: 35-18-08-33-1-13-5 .99 acres (152' Wilson, 285' Mesopotamia
140' deep)

Latitude: 32° 50' 26"

Longitude: 87° 53' 17"

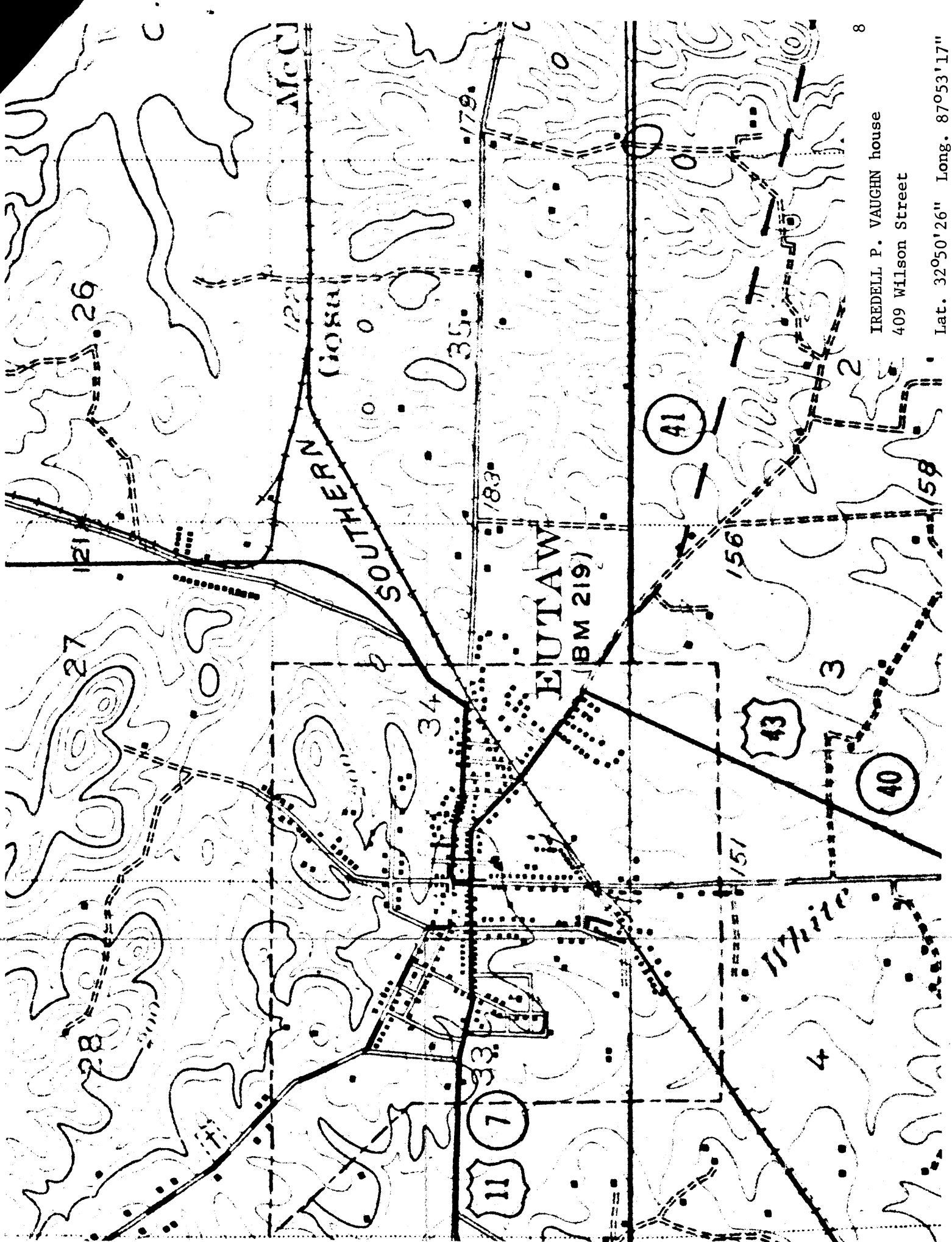
1841 construction

Builder/Architect unknown

c. 1860 additions to northwest corner
late 19th c. porch railing

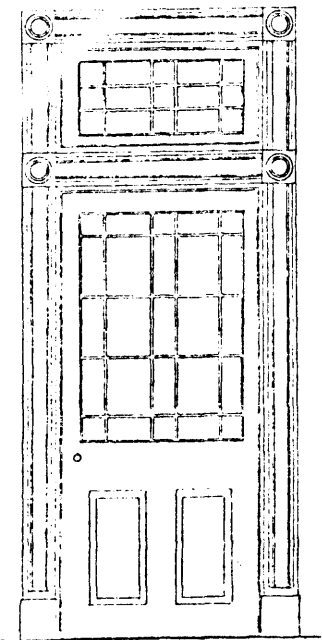
SIGNIFICANCE: This is the first constructed and certainly the oldest stylistically of three L-shaped cottages with L-shaped verandas (the other two are Little Berry Pippen #9-early 1840's and Daniel Wright House #10 - 1847). Termed a Creole Cottage by Clay Lancaster, it shares the cut-under porches of that style and like many of the Louisiana and South Carolina coastal dwellings, it is raised on brick piers.

DESCRIPTION: The Vaughn House has an L plan featuring a porch running along the two outer sides, making a double front, toward the east and south, the latter seeming inexplicable as it faced the back of the Reese carriage shop. Eleven round colonnettes support the entablature, and the roof has a hip at the angle and gables at the ends. Walls are of flush boards on the porch and clapboards elsewhere. Doors and windows on the gallery are closely spaced, the doors with glass in and transoms over them, and windows paneled beneath. Frames are similar to those of the Asa White (#3) house. An external chimney is on the west end, and a second shaft is between the two east rooms. The plan is unusual, consisting primarily of three large rooms and connecting halls. The room at the corner would have been the parlor, and that at the west end (nearest the kitchen in the yard) must have been used for dining. This leaves the remaining room for a bed chamber, which is slightly larger than either of the others. As in the two south rooms of the Dr. John C. Anderson house on Prairie Street, the partition staggers to either side of the back-to-back fireplaces, allotting one space to each room on the east front of the Vaughn house. These two rooms alone have chairrailing. Interior doors have six equal panels. The only remarkable chimneypiece is that in the west (dining) room, with pilasters, and panels in their imposts and center fascia board.

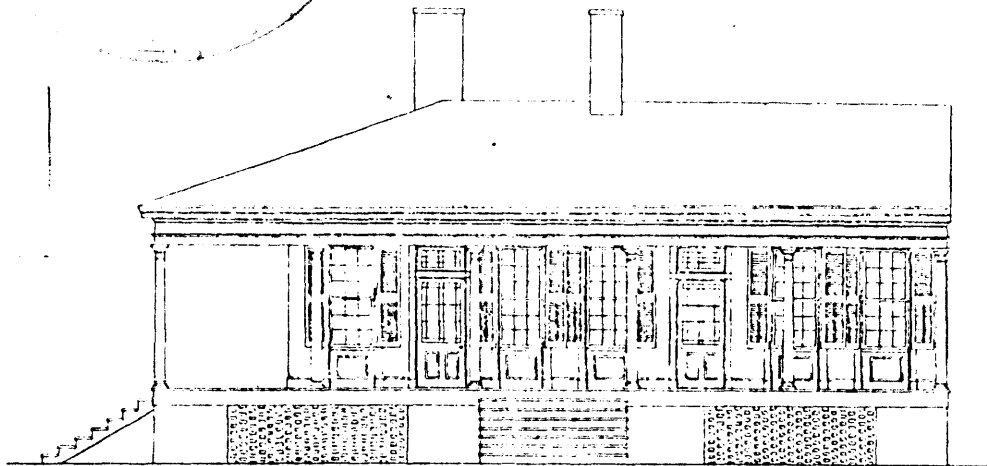
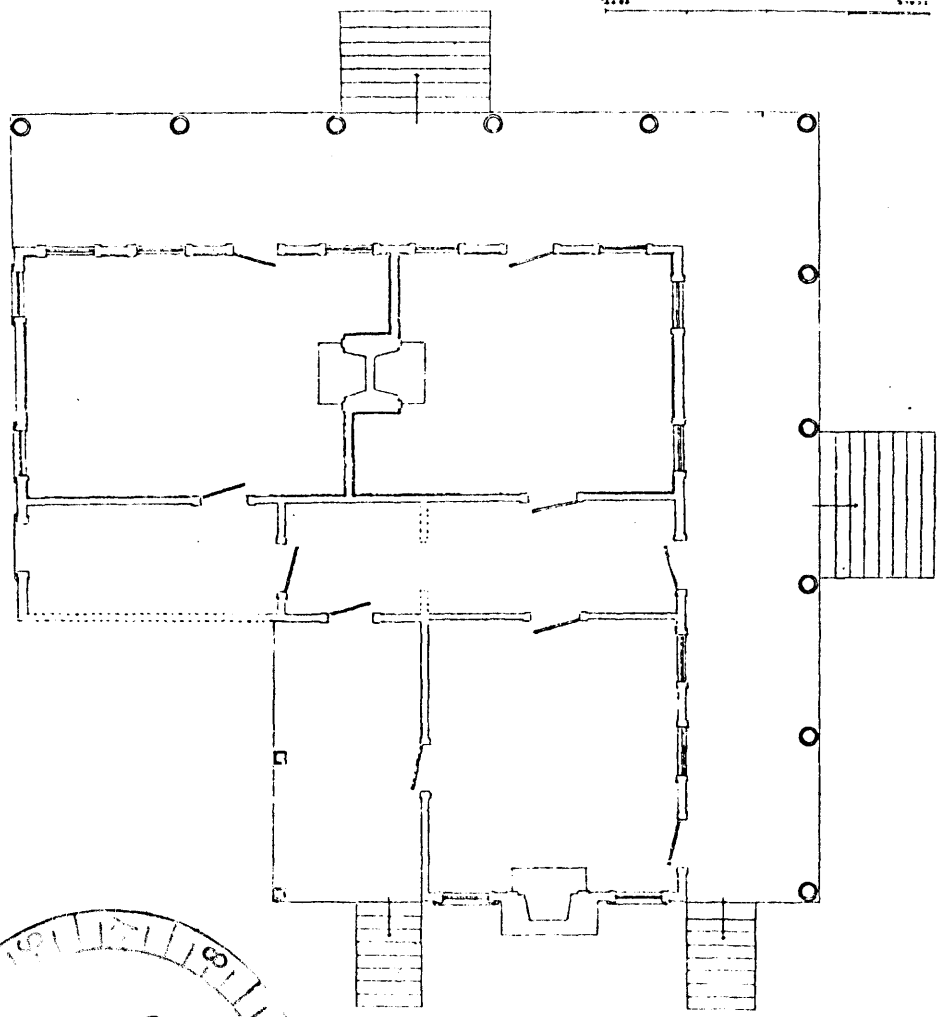
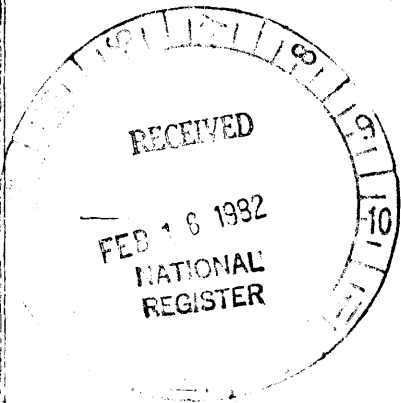
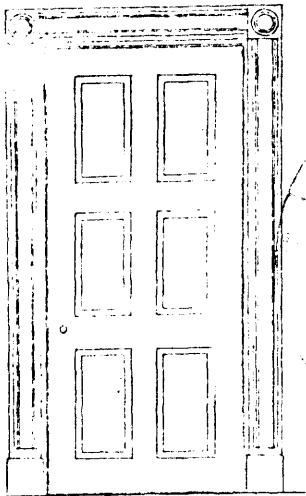


IREDELL P. VAUGHN house
409 Wilson Street

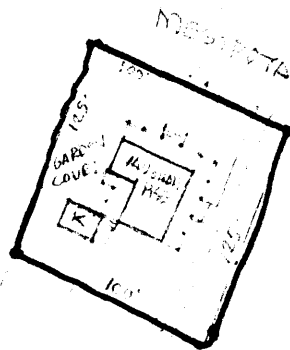
Lat. 32°50'26" Long. 87°53'17"



SCALE

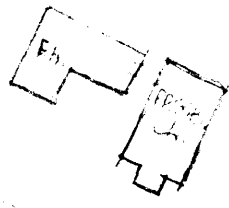


SCALE



CHURCH GARDEN

CHURCH PARKING



WILSON ST

RELOCATION PLAN "B"
 (REDELL VANDERMAN HOUSE (1844))
 GEORGIA CO. HISTORICAL SOCIETY
 EUNING, AL. 13 MAR. 1992
 1" = 100' ±

New verbal boundary description: The boundary is described by the red line on the above map and measures approximately 125' x 100'. It includes the house and a subdivision of its original lot.

Jones & Herrin

Architects, A.I.A.

104 Jefferson Street

Huntsville, AL 35801

ARLIE P. JONES, F.A.I.C.D.