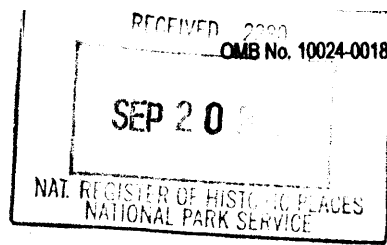


United States Department of the Interior  
National Park Service



1202

### National Register of Historic Places Registration Form

This form is for use in nominating or requesting determinations for individual properties and districts. See instructions in *How to Complete the National Register of Historic Places Registration Form* (National Register Bulletin 16A) Complete each item by marking "x" in the appropriate box or by entering the information requested. If an item does not apply to the property being documented, enter "N/A" for "not applicable." For functions, architectural classification, materials, and areas of significance, enter only categories and subcategories from the instructions. Place additional entries and narrative items on continuation sheets (NPS Form 10-9000a). Use a typewriter, word processor, or computer, to complete all items.

1. Name of Property Santa Fe Trail (Douglas Co. Trail Segments)

Historic name Douglas Co. Prairie Park; Black Jack Park Ruins; NPS Master Plan #59

Other name/site number \_\_\_\_\_

#### 2. Location

Street & number U.S. Highway 56, 2 1/2 Miles East of Baldwin City  not for publication

City or town Baldwin City  vicinity

State Kansas Code KS County Douglas Code 045 Zip code 66006

#### 3. State/Federal Agency Certification

As the designated authority under the National Historic Preservation Act, as amended, I hereby certify that this  nomination  request for determination of eligibility meets the documentation standards for registering properties in the National Register of Historic Places and meets the procedural and professional requirements set forth in 36 CFR Part 60. In my opinion, the property  meets  does not meet the National Register criteria. I recommend that this property be considered significant  nationally  statewide  locally. ( See continuation sheet for additional comments.)

Richard D. Parkratz DSHS September 16, 2002  
Signature of certifying official/Title Date

Kansas State Historical Society

State or Federal agency and bureau

In my opinion, the property  meets  does not meet the National Register criteria. ( See continuation sheet for additional Comments.)

\_\_\_\_\_  
Signature of commenting official /Title Date

State or Federal agency and bureau

#### 4. National Park Service Certification

I hereby certify that the property is

- entered in the National Register. Andrea McClard Signature of the Keeper 11/04/02 Date of Action
- See continuation sheet..
- determined eligible for the National Register  See continuation sheet.
- determined not eligible for the National Register
- removed from the National Register
- other, (explain:)

**5. Classification**

**Ownership of Property**  
 (Check as many boxes as apply)  
 count.)

- private
- public-local
- public-State
- public-Federal

**Category of Property**  
 (Check only one box)

- building(s)
- district
- site
- structure
- object

**Number of Resources within Property**  
 (Do not include previously listed resources in the count.)

Contributing	Noncontributing	
0	0	buildings
1	0	sites
0	0	structures
0	3	objects
1	3	total

**Name of Related Multiple Property Listing**  
 (Enter "N/A" if property is not part of a multiple property listing.)

Historic Resources of the Santa Fe Trail

**Number of contributing resources previously listed in the National Register**

N/A

**6. Function or Use**

**Historic Functions**  
 (Enter Categories from instructions)

TRANSPORTATION / Road-Related

TRANSPORTATION / Pedestrian-Related

**Current Functions**  
 (Enter categories from instructions)

LANDSCAPE / Park

**7. Description**

**Architectural Classification**  
 (Enter categories from instructions)

N/A

**Materials**  
 (Enter categories from instructions)

Foundation: N/A

Walls: N/A

Roof: N/A

Other: N/A

**Narrative Description**

(Describe the historic and current condition of the property on one or more continuation sheets.)

Name of Property Douglas Co. Trail Segments

County and State Douglas County, Kansas

Multiple Property Submission: Historic Resources of the Santa Fe Trail

8. Statement of Significance

Applicable National Register Criteria

(Mark "X" in one or more boxes for the criteria qualifying the property for National Register)

XX A Property is associated with events that have made a significant contribution to the broad patterns of our history

[ ] B Property is associated with the lives of persons significant in our past.

[ ] C Property embodies the distinctive characteristics of a type, period, or method of construction or represents the work of a master, or possesses high artistic values, or represents a significant and distinguishable entity whose components lack individual distinction.

[ ] D Property has yielded, or likely to yield, information important in prehistory or history.

Criteria Considerations

(Mark "x" in all the boxes that apply.)

Property is:

[ ] A owned by a religious institution or used for religious purposes.

[ ] B removed from its original location.

[ ] C a birthplace or grave.

[ ] D a cemetery.

[ ] E a reconstructed building, object, or structure.

[ ] F a commemorative property.

[ ] G less than 50 years of age or achieved significance within the past 50 years

Areas of Significance

(Enter categories from instructions)

Commerce

Transportation

Military

Period of Significance

1821-1865

Significant Dates

1825

1846

Significant Person

(Complete if Criterion B is marked above)

N/A

Cultural Affiliation

N/A

Architect/Builder

N/A

Narrative Statement of Significance

(Explain the significance of the property on one or more continuation sheets.)

9. Major Bibliographical References

Bibliography

(Cite the books, articles, and other sources used in preparing this form on one or more continuation sheets.)

Previous documentation on file (NPS): Primary location of additional data:

[ ] preliminary determination of individual listing (36 CFR 67) has been requested

[ ] Previously listed in the National Register

[ ] previously determined eligible by the National Register

[ ] designated a National Historic Landmark

[ ] recorded by Historic American Buildings Survey

#

[ ] recorded by Historic American Engineering

Record #

[ ] State Historic Preservation Office

[ ] Other State agency

XX Federal agency

[ ] Local government

[ ] University

[ ] Other

Name of repository:

National Park Service Regional Office - Santa Fe, New Mexico

Name of Property Douglas Co. Trail Segments

County and State Douglas County, Kansas

Multiple Property Submission: Historic Resources of the Santa Fe Trail

**10. Geographical Data**

Acreege of Property 6 1/2

**UTM References**

(Place additional UTM references on a continuation sheet.)

15	314990	4292870			
1 Zone	Easting	Northing	3 Zone	Easting	Northing
2			4		

See continuation sheet

**Verbal Boundary Description**

(Describe the boundaries of the property on a continuation sheet.)

**Boundary Justification**

(Explain why the boundaries were selected on a continuation sheet.)

**11. Form Prepared By**

Name/title See Continuation Sheet, Section 11

Organization The URBANA Group Date May 1993

Street & number 202 S. Broadway, Suite 206, P.O. Box 1028 Telephone 217-344-3726

City or town Urbana State IL Zip code 61801-9028

**Additional Documentation**

Submit the following items with the completed form:

**Continuation Sheets**

**Maps**

A USGS map (7.5 or 15 minute series) indicating the property's location.

A Sketch map for historic districts and properties having large acreage or numerous resources.

**Photographs**

Representative black and white photographs of the property.

**Additional items**

(Check with SHPO or FPO for any additional items)

**Property Owner**

name Douglas County Commission

street & number 1100 Massachusetts telephone 785-841-7700

city or town Lawrence state KS zip code 66044

**Paperwork Reduction Act Statement:** This information is being collected for applications to the National Register of Historic Places to nominate properties for listing or determine eligibility for listing, to list properties, and to amend existing listings. Response to this request is required to obtain a benefit in accordance with the National Historic Preservation Act, as amended (16 U.S.C. 470 et seq.).

**Estimated Burden Statement:** Public reporting burden for this form is estimated to average 18.1 hours per response including time for reviewing instructions, gathering and maintaining data, and completing and reviewing the form. Direct comments regarding this burden estimate or any aspect of this form to the Chief, Administrative Services Division, National Park Service, P.O. Box 37127, Washington, DC 20013-7127; and the Office of Management and Budget, Paperwork Reductions Projects (1024-0018), Washington, DC 20503

United States Department of the Interior  
National Park Service

National Register of Historic Places  
Continuation Sheet

Santa Fe Trail (Douglas Co. Trail Segments); KS;  
Historic Resources of the Santa Fe Trail, 1821-1880  
Section number 7

Page 5

---

**Narrative Description**

The Santa Fe Trail (Douglas County Trail Segments) site is located in Ivan Boyd Memorial Prairie Preserve, approximately three miles east of Baldwin City, Kansas. The six and one-half acre site consists of four rutted segments that branch out like tributaries from one another. Two commemorative limestone markers were placed at the southeast corner and northwest corner of the nominated area in 1965. A modern wooden sign marking the trail ruts stands at the southeast corner of the parcel.

The site lies directly south of the intersection of U. S. Highway 56 and Douglas County Road 2000E. Immediately west of the county park is Robert Pearson Hall Memorial Park, a site associated with the 1856 Battle of Black Jack, a pre-Civil War battle between pro and anti-slavery factions.

Among the physical features of the site are a series of four discernable southeast-to-northwest trending Trail ruts which parallel an intermittent stream course defining the northern boundary of the site. At both ends of the rutted segments are native limestone markers which define the clearly evident extent of the ruts. The southern native stone marker at the southernmost extension of the ruts identifies itself as a "Sibley Survey"/"1825" marker by a faintly legible inscription; the other marker, also attributed to the Sibley Survey<sup>1</sup>, has no inscription. The first two ruts, for convenience numbered 1 and 2 on the sketch map, run from a wooded copse bordering the intermittent stream on the site's northern end and trend southeastwardly toward a fence line. The intersecting ruts run a distance of approximately 150 meters. The second set of linked ruts parallel this first course, but lie to the south of the first group. These ruts, numbers 3 and 4, track approximately 160 meters along a southeast-northwest and westward trend, respectively. The two ruts diverge from each other approximately 20 meters from where they become discernable on the far southeast corner of the site.

The environmental context of the site is excellent. Although this is a developed park it features native prairie plant species which provide an excellent backdrop to the preserved rutted segments. Integrity of location and setting are correspondingly high and the tangible sense of feeling and association is retained.

**Endnotes**

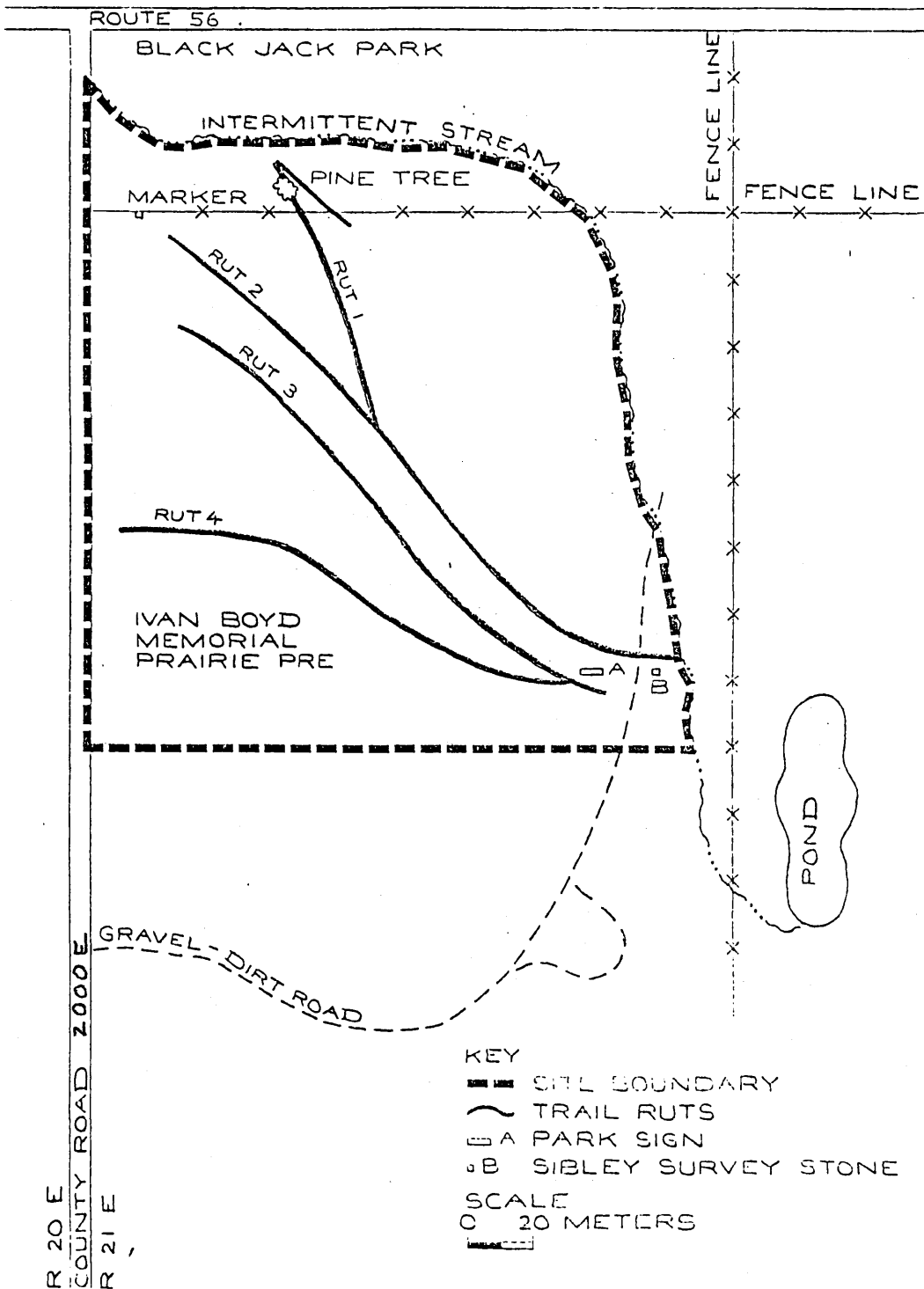
1. Marc Simmons, Following the Santa Fe Trail: A Guide for Modern Travelers, 2nd ed. (Santa Fe: Ancient City Press, 1986), p. 68.

United States Department of the Interior  
National Park Service

National Register of Historic Places  
Continuation Sheet

Santa Fe Trail (Douglas Co. Trail Segments); KS;  
Historic Resources of the Santa Fe Trail, 1821-1880  
Section number 7

Sketch Map



United States Department of the Interior  
National Park Service

National Register of Historic Places  
Continuation Sheet

Santa Fe Trail (Douglas Co. Trail Segments); KS;  
Historic Resources of the Santa Fe Trail, 1821-1880  
Section number 8

Page 8

**Narrative Statement of Significance**

The Santa Fe Trail (Douglas County Trail Segments) site is eligible for the National Register under Criterion A as a reflection of the historically significant Trail traffic, and meets the Criterion within the areas of Commerce, Transportation, and Military. The property fulfills the requirements of the Historic Trail property type within section F of the Historic Resources of the Santa Fe Trail, 1821-1880 Multiple Property Documentation form. The Trail segments represent a tangible reminder of Santa Fe Trail traffic from 1821 through the end of the Civil War. Positioned between Ft. Leavenworth and the Narrows, these ruts evidence the passage of military and civilian wagons before the advent of the railroad. The ruts retain integrity in location, setting, feeling, and association and bear witness to the Trail's importance in trans-Mississippi transport in the antebellum and Civil War periods. Thus, they materially reflect important historic events outlined in the historic contexts: International Trade on the Mexican Road: 1821-1846; Mexican War and the Santa Fe Trail: 1846-1848; Expanding National Trade on the Santa Fe Trail: 1848-1865; and The Effects of the Civil War on the Santa Fe Trail: 1861-1865. Few rutted segments in the region vie with the environmental quality and high preservation values of these ruts.<sup>1</sup>

This section of the Santa Fe Trail was used from its earliest days, its pathway first established for trade by the first trade caravans of 1821-1822. In 1825, Senator Thomas Hart Benton of Missouri successfully steered through congressional legislation to initiate a survey of the Santa Fe Trail. Correspondingly, in the summer of that year the Trail was surveyed under the first United States government sponsored survey under the command of Commissioner George C. Sibley. The execution of this survey is tangibly reflected in the markers found on this site. The markers are tied to the development of the Trail as an important international commercial trade route in the trans-Mississippi West. These rutted segments also function as part of the military road of conquest during the Mexican War of 1846, the military freight road of the period between 1846 - c. 1860s, and, later, as a part of the vital mail and passenger stage coach route established to Santa Fe. The advent of the railroads in the late 1860s brought this section of the Trail to a close after the Civil War.

These rutted segments reflect a part of the nationally significant Santa Fe Trail commercial traffic between 1821-1846.

The Trail was militarily significant on the national level through the early stages of the American conquest of the Southwest in the Mexican War. General S.W. Kearny's Army of the West and other American forces used this route in the war. It served as an important part of the vital logistical and communication link between the American forces and nation. After the conquest of the Southwest, this part of the Trail became a part of the military, commercial, and transportation traffic corridor which linked this region to the United States. The Trail in this area continued to shunt vitally important commercial and logistical

United States Department of the Interior  
National Park Service

National Register of Historic Places  
Continuation Sheet

Santa Fe Trail (Douglas Co. Trail Segments); KS;  
Historic Resources of the Santa Fe Trail, 1821-1880  
Section number 8

Page 9

---

traffic to the newly acquired territories of the West. During the Civil War and military campaigns against the American Indians, the Trail fulfilled its role in funneling goods to New Mexico Territory.

The end of the Civil War saw this portion of the Trail lose significance as a regional road; the advent of the railroad in the 1860s brought this section of the Trail to a close.

**Endnotes**

1. United States Department of the Interior/National Park Service, Santa Fe National Historic Trail: Comprehensive Management and Use Plan (Washington, D.C.: U.S. Government Printing Office, 1990), p. 95.



United States Department of the Interior  
National Park Service

National Register of Historic Places  
Continuation Sheet

Santa Fe Trail (Douglas Co. Trail Segments); KS;  
Historic Resources of the Santa Fe Trail, 1821-1880  
Section number 9

Page 10

---

**Bibliography**

Simmons, Marc. Following the Santa Fe Trail: A Guide for Modern Travelers. 2nd ed. Santa Fe:  
Ancient City Press, 1986.

United States Department of the Interior/National Park Service. Santa Fe National Historic Trail:  
Comprehensive Management and Use Plan. Washington, D.C.: U.S. Government Printing Office,  
1990.

United States Department of the Interior  
National Park Service

National Register of Historic Places  
Continuation Sheet

Santa Fe Trail (Douglas Co. Trail Segments); KS;  
Historic Resources of the Santa Fe Trail, 1821-1880  
Section number 10

Page 11

---

**Verbal Boundary Description**

The boundaries for the Santa Fe Trail (Douglas County Trail Segments) are restricted to the ruts themselves and a small amount of adjoining acreage to retain setting. Starting at the point of intersection of the eastern edge of the county road and the southern edge of the intermittent stream, twenty meters south of the intersection of the county road and U.S. Highway 56, proceed south along the eastern edge of the county road for 200 meters. Continue the boundary east for 180 meters until the western edge of the intermittent stream channel is reached. Follow the western edge of the intermittent stream channel north, west, and northwest to return to the point of origin.

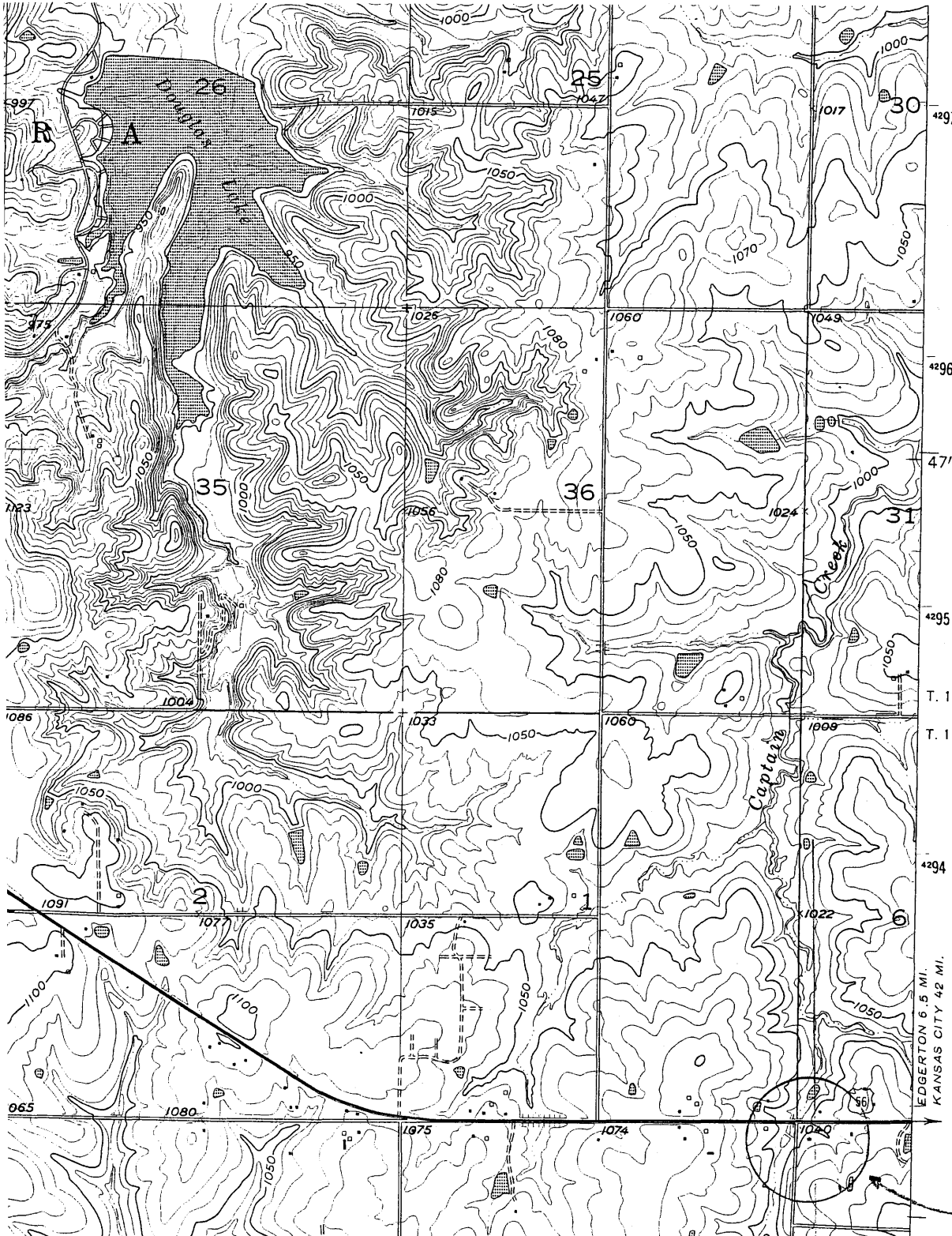
**Boundary Justification**

The boundaries encompass a six and one-half acre parcel of land. This parcel incorporates only the rutted segments and their immediate environs. The boundaries were formed to only encompass the historically-significant Trail resources. The boundaries here are influenced by local park development; fortunately, the Trail remains here are incorporated into a prairie reserve which has high preservation values. The points and distances in the description are approximations based on the U.S.G.S Baldwin City (KS) 7.5' quadrangle and were formulated to purposefully exclude incompatible physical and visual intrusions on the site. However, there are no true integrity compromising intrusions along the Trail rut corridor. The natural feature identified as the western edge of an intermittent stream functions as the eastern and northern boundaries of this site. The use of the eastern margin of the county road as a boundary, contained within this nomination, presupposes the exclusion of the road's current publicly-designated rights-of-way. The southern boundary was designated on the basis of the location of the site's historic Trail resources.

United States Department of the Interior  
National Park Service

National Register of Historic Places  
Continuation Sheet

Santa Fe Trail (Douglas Co. Trail Segments); KS;  
Historic Resources of the Santa Fe Trail, 1821-1880  
Section number 7



#59 - SANTA FE TRAIL (DOUGLAS COUNTY TRAIL SEGMENTS)  
US HIGHWAY 56, BALDWIN CITY, KS VICINITY  
15-314990-4292870

United States Department of the Interior  
National Park Service

National Register of Historic Places  
Continuation Sheet

Santa Fe Trail (Douglas Co. Trail Segments); KS;  
Historic Resources of the Santa Fe Trail, 1821-1880  
Section number 11

Page 12

---

**Form Prepared By**

For The URBANA Group:

Hugh Davidson/Special Consultant  
Technical Writer

Joseph Gallagher/Cultural Geographer  
Editing; Mapping

Alice Edwards/Vice President/Preservation Planner  
Editing

Archaeological Survey, University of Missouri-St. Louis  
Colleen Hamilton and Brad Mueller/Historic Archaeologists  
Field Work