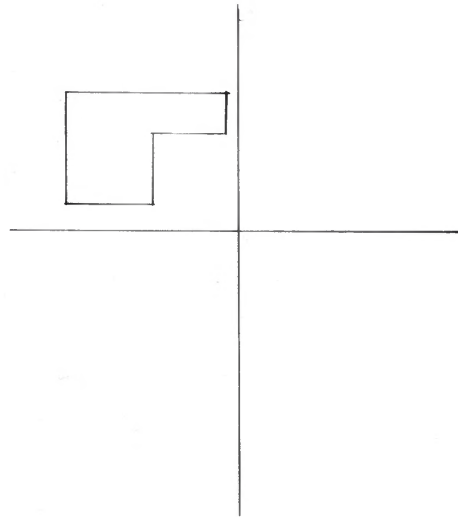
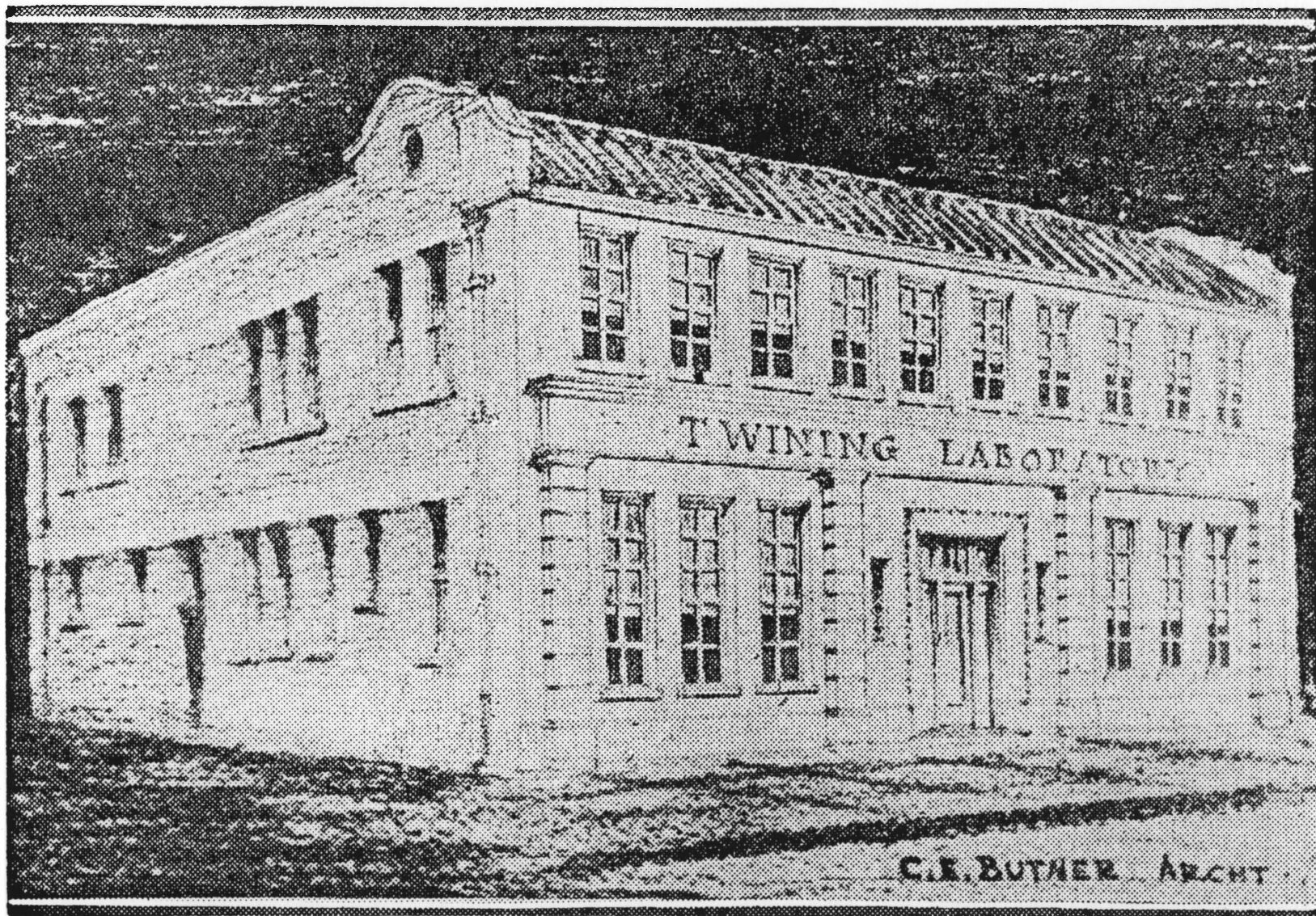


1. THE TWINING LABORATORIES (1930)
2. FRESNO, CALIFORNIA
3. AERIAL PHOTOMETRICS
4. JULY 22, 1985
5. AERIAL PHOTOMETRICS
5665 EAST WESTOVER
FRESNO, CA 93727
6. AERIAL OF INTERSECTION
AT FRESNO AND "P" STREETS
7. No. 1 of 13



AERIAL PHOTOMETRICS, INC.
5665 East Westover Suite 102
FRESNO, CALIFORNIA 93727
(209) 291-5561
Project # Q5114-25D
Date 4-22-95
Scale NA

Work Starts On New Laboratory



Erection of a new building for the Twining Laboratories is under way at Fresno and P street. When the building is finished it will appear as above, a sketch prepared by Charles E. Butner, Fresno architect. The building and equipment will represent an investment of more than \$50,000, and while the structure will be completed in about 90 days by Fisher & McNulty, general contractors, it will not be occupied until it has been equipped as one of the most modern laboratories in the country.

1. THE TWINING LABORATORIES. (1930)
2. FRESNO, CALIFORNIA
3. CHARLES BUTNER, RENDERER
4. C. 1930
5. FRESNO MORNING REPUBLICAN
FEBRUARY 18, 1930
VOLUME LXXVII - No. 49
6. FRONT ELEVATION LOOKING NORTH
7. No. 2 of 13



THE TWINING LABORATORIES

1. THE TWINING LABORATORIES (1930)
2. FRESNO, CALIFORNIA
3. PHOTOGRAPHER UNKNOWN
4. C. 1930
5. JOHN EDWARD POWELL
224 EAST CAMBRIDGE
FRESNO, CA 93704
6. FRONT ELEVATION LOOKING
NORTHWEST
7. NO. 3 OF 13



THE TWINING LABORATORIES



1. THE TWINING LABORATORIES (1930)
2. FRESNO, CALIFORNIA
3. CLAUDE "POP" LAVAL, PHOTOGRAPHER
4. JANUARY 21, 1941
5. NEGATIVE NO. 48753-J
GRAPHIC TECHNOLOGY
FRESNO, CALIFORNIA
6. FRONT AND SIDE ELEVATION LOOKING WEST
7. NO. 4 OF 13



THE TWINING LABORATORY

INC.

2527

LABORATORY
SERVICES
FOR
INDUSTRIAL
AND
RESEARCH
PURPOSES

LABORATORY
SERVICES
FOR
INDUSTRIAL
AND
RESEARCH
PURPOSES

STREET
LIGHT

1. THE TWINING LABORATORIES (1930)
2. FRESNO, CALIFORNIA
3. JOHN EDWARD POWELL, PHOTOGRAPHER
4. JULY, 1987
5. JOHN EDWARD POWELL
224 EAST CAMBRIDGE
FRESNO, CA 93704
6. FRONT ELEVATION LOOKING NORTH
7. No. 5 of 13



CHEMISTS THE TWINING LABORATORIES ENGINEERS

TRUCK ROUTE
←

51
12

1. THE TWINING LABORATORIES (1930)
2. FRESNO, CALIFORNIA
3. JOHN EDWARD POWELL, PHOTOGRAPHER
4. JULY, 1987
5. JOHN EDWARD POWELL
224 EAST CAMBRIDGE
FRESNO, CA 93704
6. FRONT ELEVATION LOOKING NORTHWEST
7. No. 6 of 13



1. THE TWINING LABORATORIES (1930)
2. FRESNO, CALIFORNIA
3. JOHN EDWARD POWELL, PHOTOGRAPHER
4. JULY, 1987
5. JOHN EDWARD POWELL
224 EAST CAMBRIDGE
FRESNO, CA 93704
6. FRONT AND SIDE ELEVATIONS
LOOKING WEST
7. No. 7 of 13



1. THE TWINING LABORATORIES (1930)
2. FRESNO, CALIFORNIA
3. JOHN EDWARD POWELL, PHOTOGRAPHER
4. JULY, 1987
5. JOHN EDWARD POWELL
224 EAST CAMBRIDGE
FRESNO, CA 93704
6. SIDE AND REAR ELEVATIONS
LOOKING SOUTH
7. NO. 8 OF 13



1. THE TWINING LABORATORIES (1930)
2. FRESNO, CALIFORNIA
3. JOHN EDWARD POWELL, PHOTOGRAPHER
4. JULY, 1987
5. JOHN EDWARD POWELL
224 EAST CAMBRIDGE
FRESNO, CA 93704
6. REAR AND ALLEY ELEVATIONS
LOOKING SOUTHEAST
7. No. 9 OF 13



1. THE TWINING LABORATORIES (1930)
2. FRESNO, CALIFORNIA
3. JOHN EDWARD POWELL, PHOTOGRAPHER
4. FEBRUARY, 1988
5. JOHN EDWARD POWELL
224 EAST CAMBRIDGE
FRESNO, CA 93704
6. FRONT RECEPTION ROOM LOOKING INTO
PRIVATE OFFICE FROM THE SOUTHWEST
7. No. 10 of 13



1. THE TWINING LABORATORIES (1930)
2. FRESNO, CALIFORNIA
3. JOHN EDWARD POWELL, PHOTOGRAPHER
4. FEBRUARY, 1988
5. JOHN EDWARD POWELL
224 EAST CAMBRIDGE
FRESNO, CA 93704
6. MAIN STAIRCASE TO SECOND FLOOR
LABORATORIES. NOTE FRONT
RECEPTION ROOM BEYOND DOORWAY.
7. NO. 11 OF 13



1. THE TWINING LABORATORIES (1930)
2. FRESNO, CALIFORNIA
3. CLAUDE "POP" LAVAL, PHOTOGRAPHER
4. c. 1935
5. JOHN EDWARD POWELL
224 EAST CAMBRIDGE
FRESNO, CA 93704
6. SECOND FLOOR LABORATORY
LOOKING NORTHWEST
7. No. 12 of 13



1. THE TWINING LABORATORIES (1930)
2. FRESNO, CALIFORNIA
3. JOHN EDWARD POWELL, PHOTOGRAPHER
4. FEBRUARY, 1988
5. JOHN EDWARD POWELL
224 EAST CAMBRIDGE
FRESNO, CA 93704
6. SECOND FLOOR LABORATORY
LOOKING NORTHWEST
7. No. 13 of 13