



APACHE CULTURE CENTER
MUSEUM

NEG # 14

'CROOK'S QUARTERS'

FT. APACHE

11/1975

TREEFUL

(1 on sketch map)

NPS Number 10,14.76

Title: Officers Quarters
Navajo Co., Arizona

Loc. officers quarters
looking N



THE B. FAMILY

NEG # T 5A

O.Q. South view

FT. APACHE

11/1915

TREEFUL

(2 on sketch map)

NPS Number 10.14.76

Title: Ft. Apache Hist. District

Navajo Co., Arizona

Loc. Officer Quarters

Looking North



NPS Number 10.1476

Title: Ft. Apache West District

Navajo Co., Arizona

Loc. Officer's Quarters

Looking N.

PROPERTY OF THE NATIONAL REGISTER

(3 on sketch map)

TREEFUL

10/1975

FT. APACHE

O.D.

NEG # P5



WPS Number 10.14.76

Title: Ft. Apache West. District

Navajo Co., Arizona

Loc. Commanding Officer's

Quarters Looking N

PROPERTY OF THE NATIONAL REGISTER

(4 on sketch map)

TREEFUL

11/1975

FT. APACHE

C.O. QUARTERS (Sattel Ready)

NEG. T11A



NEG # T 12A

O. Q.

FT. APACHE

11/1975

TREEFUL

(6 on sketch map)

PROPERTY OF THE NATIONAL REGISTER

NPS Number 10.14.76
Title: Ft. Apache Nat. District
Murray Es. 1, Arizona
Loc. 5 Miles S. of
Flagstaff, N



NEG# P12

OFFICERS ROW

FT. APACHE

10/1975

TREEFUL

(# 8 on sketchmap)

PROPERTY OF THE NATIONAL REGISTER

NPS Number 10.14.76
Title: Fort Apache Tent District
Loc: Wright Co., Arizona
Officer's Row
Looking NE



NEG # T 15A

O.Q.

FT. APACHE

11/1975

TREEFUL

(10 on sketch map)

PROPERTY OF THE NATIONAL REGISTER

NPS Number 10.14.76
Title: Ft. Apache, Fort. District
George C. Osipow
E. Johnson & Son
Looking N.E.
Loc.



NPS Number 10.14.76

Title: Ft. Apache Hist. District

Navajo Co., Arizona

Loc. Infirmary

PROPERTY OF THE NATIONAL REGISTER.

#12 on sketch map

TREEFUL

11/1975

Ft. Apache

(INFIRMARY FOR T.R. School?)

NEG # T 18A



NPS Number 10.14.76

Title: Ft. Apache Tent. Structure
Navajo Co., Arizona

Loc. Commissary, looking
South

PROPERTY OF THE NATIONAL REGISTER

Neg # X21A
COMMISSARY
~~STORER'S~~ east side showing cellar
FT. APACHE
11/1975
TREEFUL
13 on sketch map



NEG # P 12

Commissary stores & Guard house
Ft. APACHE

10/1975

TREEFUL

(13 & 14 on sketch map)

PROPERTY OF THE NATIONAL REGISTER

~~Looking NNE~~
~~Russell Brown (R)~~
~~Commissary (R) and~~
~~Maps (R), Originals~~
~~Ft Apache, Mt. Desert~~
10.14.76
NPS Number
Title:
Loc.



POST OFFICE

PROHIBITED
TO BE
REMOVED

RESERVED
FOR
U. S. MAIL
PURPOSES

POST

NPS Number 10.14.76

Title: Ft. Apache Hist. District

Navajo Co., Arizona

Loc. Post Office, formerly

Adjutant's Office

PROPERTY OF THE NATIONAL REGISTER.

(15 on sketch map)

TEECUL

10/1975

FT. APACHE

ADJUTANTS OFFICE, POST OFFICE, east facade

NEG # P-13



NEG # T20A

BOYS DORM, west facade

FT. APACHE

11/1975

TREEFUL

16 on sketch map

PROPERTY OF THE NATIONAL REGISTER

NPS Number 10.14.76
Title: Ft. Apache National Monument
Loc. Navajo Co., Arizona
Boy's Dormitory
Looking NE



NPS Number 10.14.76

Title: Ft. Apache Hist. District

Navajo Co., Arizona

Loc. Baracks, looking S

PROPERTY OF THE NATIONAL REGISTER

NEG # Q18
BARACKS, NORTH FACADE
FT. APACHE
10/1975
TREEFUL
(17 on sketch map)



NPS Number 10-14-16

Title: Ft. Apache Kintous Desert

Navajo Co., Arizona

Loc. Kamsick, looking W

PROPERTY OF THE NATIONAL REGISTER

(17 on sketch map)

TREEFUL

11/1975

Ft. Apache

BARACKS, east side of east wing

NEG # X 2A



NPS Number 10.14.76

Title: Ft. Apache Kent Desert

Navajo Co., Arizona

Loc. Barracks + Shop,

Looking N

PROPERTY OF THE NATIONAL REGISTER

(17 1/2 sketch map)

TREDFUL

10/1975

FT. APACHE

BARRACKS & SHOP

NEG # Q15



NEG # T 8A

GIRLS DORM (EAST FACADE)

Ft. APACHE

11/1075

TREEFUL

(23 on sketch map)

PROPERTY OF THE NATIONAL REGISTER

NPS Number 10.14.76
Title: Ft. Apache, Kirk & Stuart
Marys Cr., Arizona
Loc. ~~Birds Reservoir~~



NEG # 18

CAVALRY STABLES

Ft. Apache

10/1975

TREEFUL

(24 on sketch map)

PROPERTY OF THE NATIONAL REGISTER

NPS Number 10-14-76

Title: Ft. Apache Hist. District

Navajo Co, Arizona

Cavalry Stable, Looking south

Loc.



NPS Number 10.14.76

Title: Ft. Apache Hist. District

Navajo Co., Arizona

Loc. Cavalry Stable + Livery

looking South

PROPERTY OF THE NATIONAL REGISTER.

(25 ON SKETCH MAP)

TREEFUL

11/1975

FT. APACHE

CAVALRY STABLE

NEG# X 10A

SIMMS
↓

W. of MAGAZINE; STONE FOUNDATION; CRAFT AREA

Q-14



IPS Number 10.14.76
Title: Fort Apache Tent District
Navajo Co., Arizona
Loc. Foundations near mesa
Looking N.W.

PROPERTY OF THE NATIONAL REGISTER

NE 6# 014
LOOKING NW
FT. APACHE
10/1975
TREEFUL



NEG. # Q6

MAGAZINE (E.)

FT. APACHE

10/1975

TREEFUL

(26 on sketch map)

PROPERTY OF THE NATIONAL REGISTER

NPS Number 10.14.76
Title: Ft. Apache Fort District
Moggin Co, Arizona
Loc: Moggin, looking SW



NPS Number 10.14.76

Title: Ft. Apache Historic District
Navajo Co., Arizona

Loc. Nor - Commissioned
Officer's Quarters,
looking SE

PROPERTY OF THE NATIONAL REGISTER

(27 1/28 on sketch map)

NEG. # 9-5
NCO QUARTERS
Ft. Apache
10/1975
TREFFUL

Q.M. Corral 603

Q.M.



NPS Number 10.14.76

Title: Ft. Apache Nat. Forest

Navajo Co., Arizona

Loc. Quintermaster's Corral

Looking NW

PROPERTY OF THE NATIONAL REGISTER

NEG # Q-3
Q.M. CORRAL
FT. APACHE
10/1975
TREEFUL

(#29 on sketch map)



NPS Number 10.14.76

Title: Ft. Apache West District
Navajo Co., Arizona

Loc. Quartermaster's
Workhouse, looking
SE

QUARTERMASTER STORES (N & W sides)

LEG # X 2A

Ft. APACHE

11/1975

TREEFUL

(#30 on sketch map)



NEG # X5A

~~QUARTER~~

GRANERY (S.E.)

Ft. Apache

11/1975

TREEFUL

(32 on sketch map)

PROPERTY OF THE NATIONAL REGISTER

NPS Number 10.14.16
Title: Ft. Apache Hist. District
Murray Co., Oregon
Barney, Looking SE



NPS Number

10.14.76

Title:

Ft. Apache Hist. District

Navajo Co., Arizona

Loc.

Stone Quarry,

looking South



NPS Number 10.14.76

Title: Fort. Apache Fort. Desert

Navajo Co., Arizona

Loc. Overall view,
looking N NW



NEG # S-5

LIME KILN (NORTH SIDE OF EAST FORK)

Ft. APACHE

11/1975

TREEFUL

(D on sketch map)

NPS Number

10.14.26

Title:

Ft. Apache Nat. Historic

Monument, Arizona

Loc.

Lime Kiln, looking N

PROPERTY OF THE NATION



NPS Number 10.14.76

Title: Ft. Apache Nat. District

Navajo Co., Arizona

Loc. Pictograph, looking N

PROPERTY OF THE NATIONAL REGISTER

(E ON SKETCH MAP)

TEEFUL

11/1975

FT. APACHE

PETROGLYPH (NORTH SIDE E. FORK)

NEG # 58



NPS Number

10.14.76

Title:

Fort Apache Post District

Navajo Co., Arizona

Loc.

Pebitoni ruins on Ridge

Across River, looking N



NPS Number 10.14.76

Title:

Fort Apache West. District

Navajo Co., Arizona

Loc.

Prehistoric ruins, looking
east



NPS Number

10.14.76

Title:

Fort Apache Kent. District

Navajo Co., Arizona

Loc.

Machinery Foundation

Looking W SW



NPS Number

10.14.76

Title:

Fort Apache West. District

Navajo Co., Arizona

Loc.

Military Cemetery

looking NW



GEN. CROOK'S QUARTERS

NATIONAL REGISTER OF HISTORIC PLACES PROPERTY PHOTOGRAPH FORM

FOR NPS USE ONLY
MAR 2 1976
RECEIVED
DATE ENTERED OCT 14 1976

SEE INSTRUCTIONS IN *HOW TO COMPLETE NATIONAL REGISTER FORMS*
TYPE ALL ENTRIES -- ENCLOSE WITH PHOTOGRAPH

1 NAME

HISTORIC

Fort Apache District

AND/OR COMMON

2 LOCATION

CITY, TOWN

Theodore Roosevelt School Reserve
Fort Apache Indian Reservation

VICINITY OF

COUNTY

Navajo

STATE

Arizona

3 PHOTO REFERENCE

PHOTO CREDIT

Arizona State Parks

DATE OF PHOTO

March 1973

NEGATIVE FILED AT

Arizona State Parks

4 IDENTIFICATION

DESCRIBE VIEW, DIRECTION, ETC. IF DISTRICT, GIVE BUILDING NAME & STREET

PHOTO NO. HP1

Officers Quarters
No. 1 on map
Looking NW



Commanding Officers Quarters, Ft. Apache, A.T.

UNITED STATES DEPARTMENT OF THE INTERIOR
NATIONAL PARK SERVICE

NATIONAL REGISTER OF HISTORIC PLACES
PROPERTY PHOTOGRAPH FORM

FOR NPS USE ONLY	
MAR 2 1976	
RECEIVED	
DATE ENTERED	OCT 14 1976

SEE INSTRUCTIONS IN *HOW TO COMPLETE NATIONAL REGISTER FORMS*
TYPE ALL ENTRIES -- ENCLOSE WITH PHOTOGRAPH

1 NAME

HISTORIC Fort Apache District

AND/OR COMMON

2 LOCATION

Theodore Roosevelt School Reserve
Fort Apache Indian Reservation

CITY, TOWN

— VICINITY OF

COUNTY

Navajo

STATE

Arizona

3 PHOTO REFERENCE

PHOTO CREDIT Quartermaster General

DATE OF PHOTO c. 1891

NEGATIVE FILED AT National Archives

4 IDENTIFICATION

DESCRIBE VIEW, DIRECTION, ETC. IF DISTRICT, GIVE BUILDING NAME & STREET

Commanding Officer's Quarters

No. 4 on map

Looking north

PHOTO NO. HP 2



Mrs Davis
(mother-in-law)

Huber
(cousin attaché)

Fusby

Mrs Fusby

Nelson, H W
(military attaché)

— Quarters and Family of R L W Tarnby - Aug. 1890 —

NPS Number

10.14.76

Title:

Ft. Apache Historic District

Navajo Co., Arizona

Loc.

Officers' Quarters

Looking N NW



Officers Quarters & Administration Building, Ft. Apache, A. T.

NPS Number

10.14.76

Title:

Ft. Apache Hist. District

Navajo Co., Arizona

Loc.

Officers' Row,

looking NW

5th Cav. c. 1903 (Edgar Perry) SB753 AHS

2-9



NPS Number

10.14-26

Title:

Ft. Apache Hist. District

Navajo Co., Arizona

LOC.

Picade Ground &

Officers' Row,

looking W

5th Cav. c. 1903 (Edgar Perry) 48751 AHS

2-8



UNITED STATES DEPARTMENT OF THE INTERIOR
NATIONAL PARK SERVICE

**NATIONAL REGISTER OF HISTORIC PLACES
PROPERTY PHOTOGRAPH FORM**

FOR NPS USE ONLY	MAR 2 1976
RECEIVED	
DATE ENTERED	OCT 14 1976

SEE INSTRUCTIONS IN *HOW TO COMPLETE NATIONAL REGISTER FORMS*
TYPE ALL ENTRIES -- ENCLOSE WITH PHOTOGRAPH

1 NAME

HISTORIC

Fort Apache District

AND/OR COMMON

2 LOCATION

Theodore Roosevelt School Reserve

Fort Apache Indian Reservation

CITY, TOWN

____VICINITY OF

COUNTY

Navajo

STATE

Arizona

3 PHOTO REFERENCE

PHOTO CREDIT

Arizona Historical Society

DATE OF PHOTO

c. 1903

NEGATIVE FILED AT

Arizona Historical Society

4 IDENTIFICATION

DESCRIBE VIEW, DIRECTION, ETC. IF DISTRICT. GIVE BUILDING NAME & STREET

Parade Ground

Looking WSW toward hospital.

PHOTO NO.

HP 6



UNITED STATES DEPARTMENT OF THE INTERIOR
NATIONAL PARK SERVICE

**NATIONAL REGISTER OF HISTORIC PLACES
PROPERTY PHOTOGRAPH FORM**

FOR NPS USE ONLY

RECEIVED
MAR 2 1976

DATE ENTERED
OCT 14 1976

SEE INSTRUCTIONS IN *HOW TO COMPLETE NATIONAL REGISTER FORMS*
TYPE ALL ENTRIES -- ENCLOSE WITH PHOTOGRAPH

1 NAME

HISTORIC

Fort Apache District

AND/OR COMMON

2 LOCATION

Theodore Roosevelt School Reserve
Fort Apache Indian Reservation

CITY, TOWN

____ VICINITY OF

COUNTY

Navajo

STATE

Arizona

3 PHOTO REFERENCE

PHOTO CREDIT

Arizona Historical Society

DATE OF PHOTO

c. 1920

NEGATIVE FILED AT

Arizona Historical Society

4 IDENTIFICATION

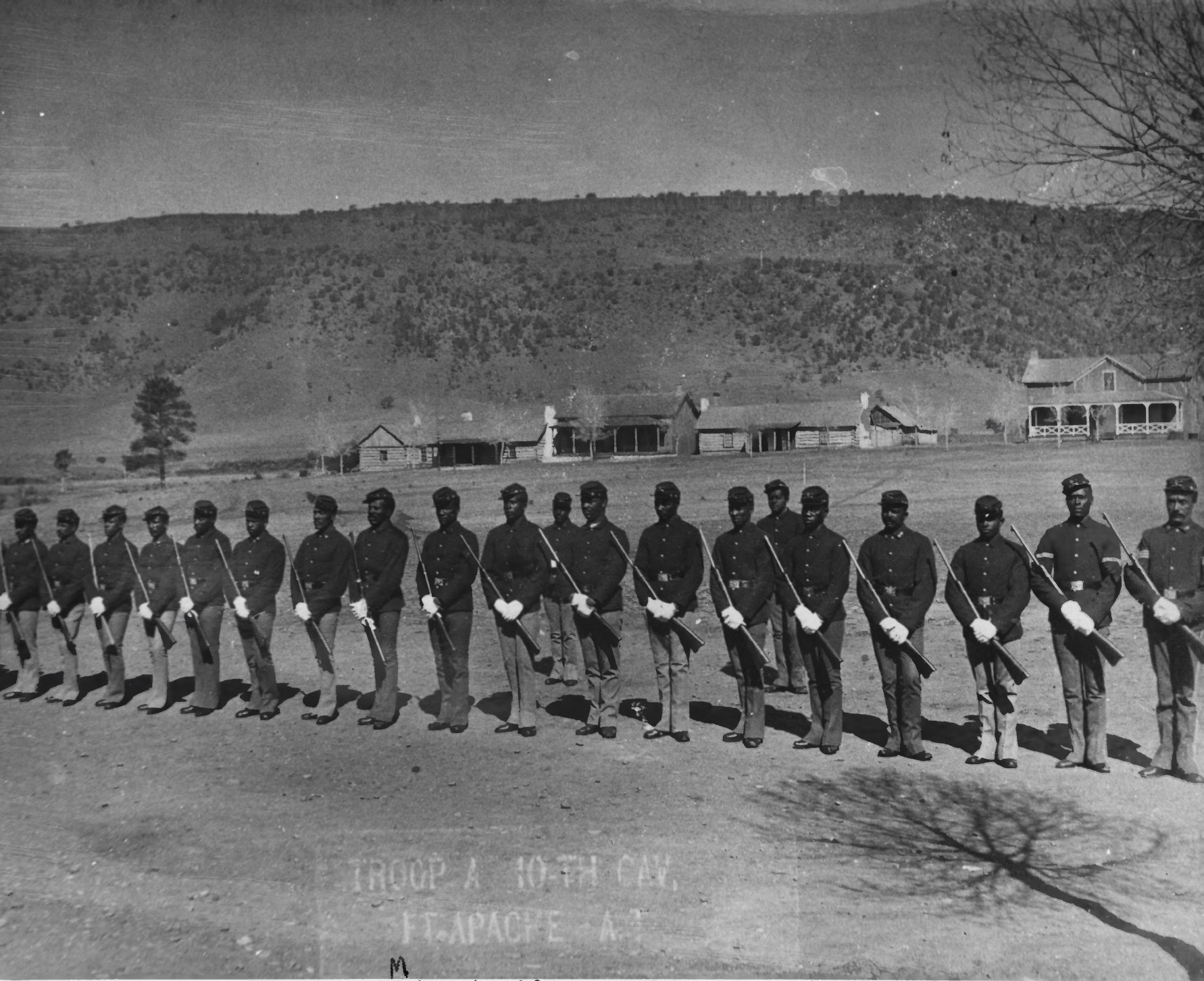
DESCRIBE VIEW, DIRECTION, ETC. IF DISTRICT, GIVE BUILDING NAME & STREET

Adjutant's Office

No. 15 on map

Looking NW

PHOTO NO. HP 7



TROOP A 10TH CAV.
FT. APACHE - A.T.

M
MARCH 1887 UOFA SPEC. COL.

FOR NPS USE ONLY
MAR 2 1976
RECEIVED
DATE ENTERED OCT 14 1976

NATIONAL REGISTER OF HISTORIC PLACES PROPERTY PHOTOGRAPH FORM

SEE INSTRUCTIONS IN *HOW TO COMPLETE NATIONAL REGISTER FORMS*
TYPE ALL ENTRIES -- ENCLOSE WITH PHOTOGRAPH

3 NAME

HISTORIC

Fort Apache District

AND/OR COMMON

3 LOCATION

Theodore Roosevelt School Reserve
Fort Apache Indian Reservation

CITY, TOWN

____VICINITY OF

COUNTY

Navajo

STATE

Arizona

3 PHOTO REFERENCE

PHOTO CREDIT

University of Arizona Special
Collections

DATE OF PHOTO

March 1887

NEGATIVE FILED AT

University of Az Sp. Collections

4 IDENTIFICATION

DESCRIBE VIEW, DIRECTION, ETC. IF DISTRICT, GIVE BUILDING NAME & STREET

Troop A 10th Cavalry
Looking NW toward
Officers Row

PHOTO NO. HP 8



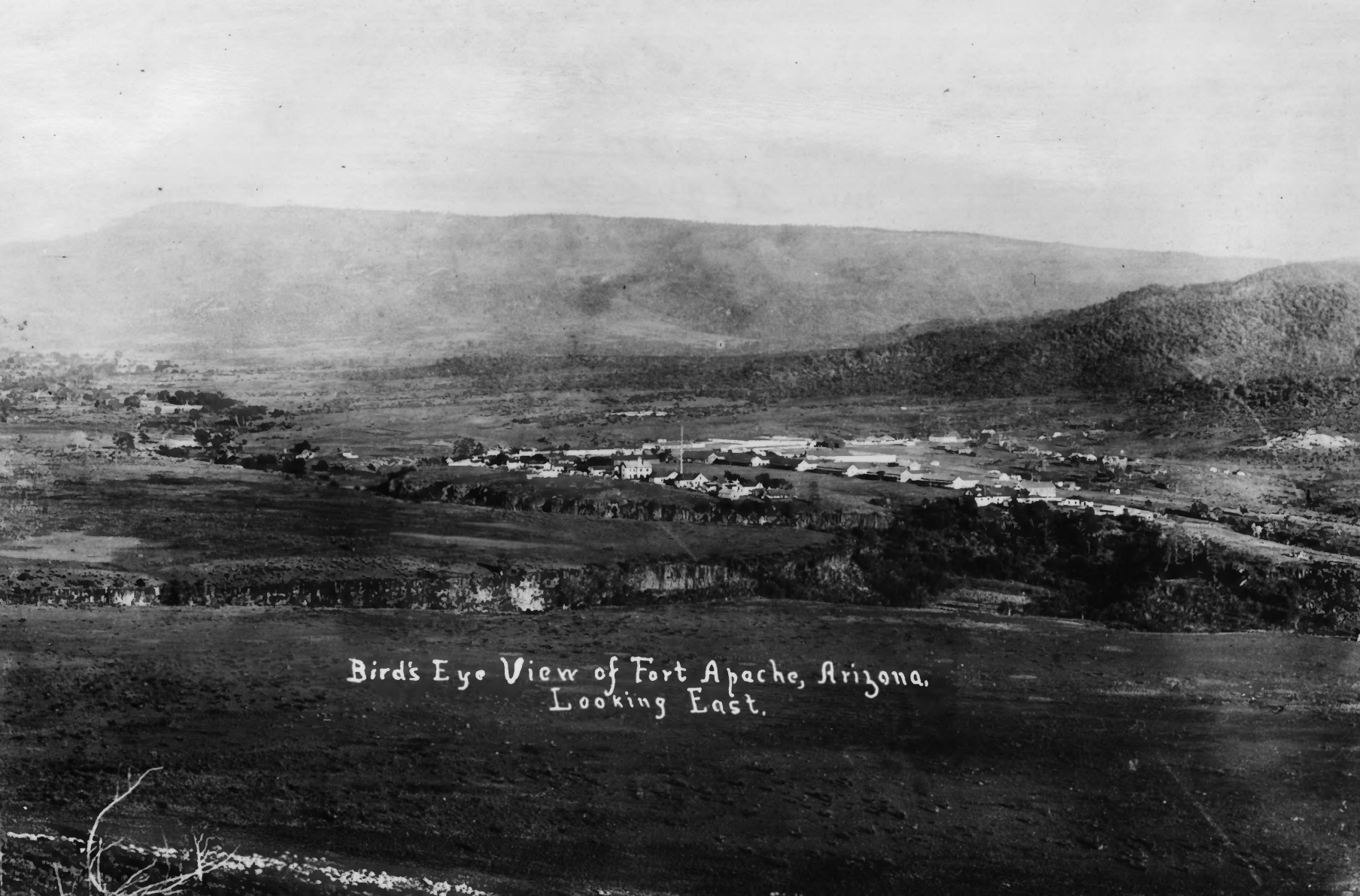
Barracks Ft. Apache, A.T.

NPS Number 10.14.76

Title: Ft. Apache Nat. District

Navajo Co., Arizona

oc. Baruch, looking E



Bird's Eye View of Fort Apache, Arizona.
Looking East.

NPS Number 10.14.76

Title: Ft. Apache Hist. District
Navajo Co., Arizona

Loc. Overview, looking E. SE



Qm. Corral, Ft. Apache, A. T.

FOR NPS USE ONLY
MAR 2 1976
RECEIVED
DATE ENTERED
OCT 14 1976

NATIONAL REGISTER OF HISTORIC PLACES PROPERTY PHOTOGRAPH FORM

SEE INSTRUCTIONS IN *HOW TO COMPLETE NATIONAL REGISTER FORMS*
TYPE ALL ENTRIES -- ENCLOSE WITH PHOTOGRAPH

1 NAME

HISTORIC

Fort Apache District

AND/OR COMMON

2 LOCATION

Theodore Roosevelt School Reserve
Fort Apache Indian Reservation

CITY, TOWN

— VICINITY OF

COUNTY

Navajo

STATE

Arizona

3 PHOTO REFERENCE

PHOTO CREDIT

Quartermaster General

DATE OF PHOTO

c. 1895

NEGATIVE FILED AT

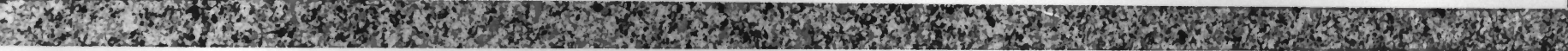
National Archives

4 IDENTIFICATION

DESCRIBE VIEW, DIRECTION, ETC. IF DISTRICT, GIVE BUILDING NAME & STREET

PHOTO NO. HP 11

Quartermaster's Corral
No. 29 on mpa
Looking NW



55923AHS

C.1910-1920

FOR NPS USE ONLY
MAR 2 1976
RECEIVED
DATE ENTERED OCT 14 1976

NATIONAL REGISTER OF HISTORIC PLACES PROPERTY PHOTOGRAPH FORM

SEE INSTRUCTIONS IN *HOW TO COMPLETE NATIONAL REGISTER FORMS*
TYPE ALL ENTRIES -- ENCLOSE WITH PHOTOGRAPH

1 NAME

HISTORIC Fort Apache District

AND/OR COMMON

2 LOCATION

CITY, TOWN Theodore Roosevelt School Reserve
Fort Apache Indian Reservation

Navajo STATE Arizona

3 PHOTO REFERENCE

PHOTO CREDIT Arizona Historical Society

DATE OF PHOTO c. 1910

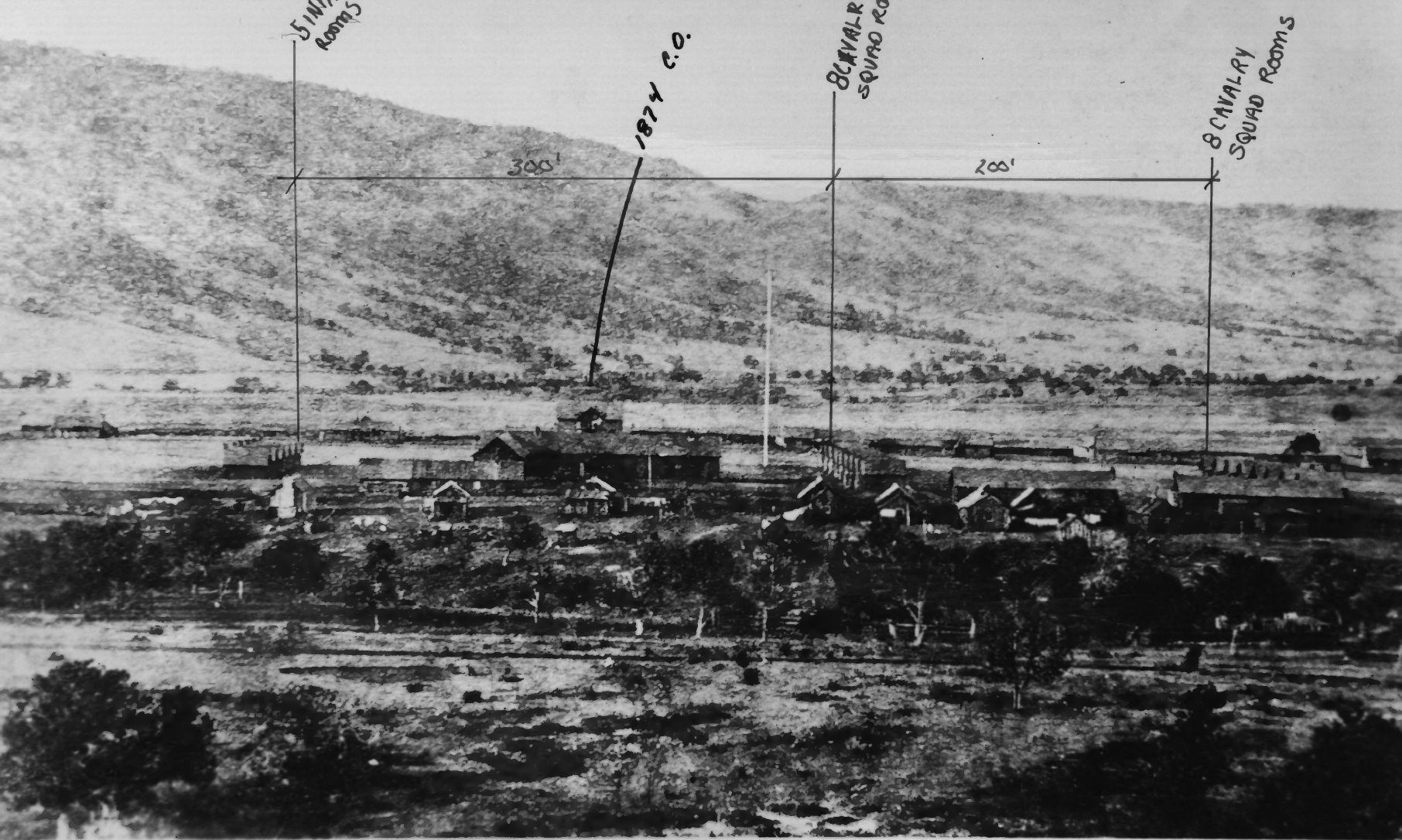
NEGATIVE FILED AT Arizona Historical Society

4 IDENTIFICATION

DESCRIBE VIEW, DIRECTION, ETC. IF DISTRICT, GIVE BUILDING NAME & STREET

Overview
Looking NW to NE

PHOTO NO. HP 12



FORT APACHE, ARIZ. TER. - 1879.

MAR 2 1976

RECEIVED

DATE ENTERED

OCT 14 1976

NATIONAL REGISTER OF HISTORIC PLACES PROPERTY PHOTOGRAPH FORM

SEE INSTRUCTIONS IN *HOW TO COMPLETE NATIONAL REGISTER FORMS*
TYPE ALL ENTRIES -- ENCLOSE WITH PHOTOGRAPH

1 NAME

HISTORIC

Fort Apache District

AND/OR COMMON

2 LOCATION

CITY, TOWN

Theodore Roosevelt School Reserve
Fort Apache Indian Reservation

VICINITY OF

COUNTY

Navajo

STATE

Arizona

3 PHOTO REFERENCE

PHOTO CREDIT

Arizona Historical Society

DATE OF PHOTO 1879

NEGATIVE FILED AT

Arizona Historical Society

4 IDENTIFICATION

DESCRIBE VIEW, DIRECTION, ETC. IF DISTRICT, GIVE BUILDING NAME & STREET

PHOTO NO. HP13

Overview
Looking north