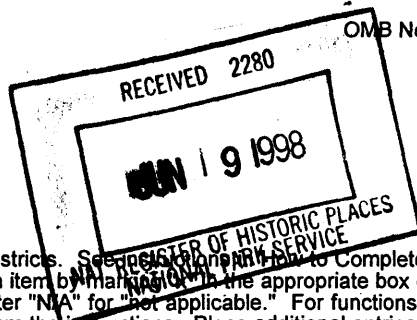


United States Department of the Interior
National Park Service

NATIONAL REGISTER OF HISTORIC PLACES
REGISTRATION FORM



856

This form is for use in nominating or requesting determinations for individual properties and districts. See the National Register of Historic Places Registration Form (National Register Bulletin 16A). Complete each item by marking in the appropriate box or by entering the information requested. If any item does not apply to the property being documented, enter "N/A" for "not applicable." For functions, architectural classification, materials, and areas of significance, enter only categories and subcategories from the instructions. Place additional entries and narrative items on continuation sheets (NPS Form 10-900a). Use a typewriter, word processor, or computer, to complete all items.

1. Name of Property

historic name ORANGE PARK NEGRO ELEMENTARY SCHOOL

other names/site number Teresa Miller School, Neighborhood Service Center

2. Location

street & number 440 McIntosh Avenue N/A not for publication

city or town Orange Park N/A vicinity

state FLORIDA code FL county Clay code 019 zip code 32073-3996

3. State/Federal Agency Certification

As the designated authority under the National Historic Preservation Act, as amended, I hereby certify that this nomination request for determination of eligibility meets the documentation standards for registering properties in the National Register of Historic Places and meets the procedural and professional requirements set forth in 36 CFR Part 60. In my opinion, the property meets does not meet the National Register criteria. I recommend that this property be considered significant nationally statewide locally. (See continuation sheet for additional comments.)

Signature of certifying official/Title

Date

James L. Pettif, DSHPO, 6-11-98

Florida State Historic Preservation Officer, Division of Historical Resources
State or Federal agency and bureau

In my opinion, the property meets does not meet the National Register criteria. (See continuation sheet for additional comments.)

Signature of certifying official/Title

Date

State or Federal agency and bureau

4. National Park Service Certification

I hereby certify that the property is:

entered in the National Register
 See continuation sheet

determined eligible for the National Register
 See continuation sheet.

determined not eligible for the National Register
 See continuation sheet.

removed from the National Register.

other, (explain)

Signature of the Keeper

Date of Action

Edson H. Beall

7-75-98

Orange Park Negro Elementary School
Name of Property

Clay Co., FL
County and State

5. Classification

Ownership of Property

(Check as many boxes as apply)

- private
- public-local
- public-State
- public-Federal

Category of Property

(Check only one box)

- buildings
- district
- site
- structure
- object

Number of Resources within Property

(Do not include any previously listed resources in the count)

Contributing		Noncontributing	
1		1	buildings
0		0	sites
0		0	structures
0		0	objects
1		1	total

Name of related multiple property listings

(Enter "N/A" if property is not part of a multiple property listing.)

Number of contributing resources previously listed in the National Register

Historic Architectural Resources of Orange Park, Florida

0

6. Function or Use

Historic Functions

(Enter categories from instructions)

EDUCATION: school

Current Functions

(Enter categories from instructions)

SOCIAL: service center

7. Description

Architectural Classification

(Enter categories from instructions)

OTHER: frame vernacular

Materials

(Enter categories from instructions)

foundation BRICK

walls WOOD

roof ASPHALT

other

Narrative Description

(Describe the historic and current condition of the property on one or more continuation sheets.)

8. Statement of Significance

Applicable National Register Criteria

(Mark "x" in one or more boxes for the criteria qualifying the property for National Register listing.)

- A** Property is associated with events that have made a significant contribution to the broad patterns of our history.
- B** Property is associated with the lives of persons significant in our past.
- C** Property embodies the distinctive characteristics of a type, period, or method of construction or represents the work of a master, or possesses high artistic values, or represents a significant and distinguishable entity whose components lack individual distinction.
- D** Property has yielded, or is likely to yield information important in prehistory or history.

Criteria Considerations

(Mark "x" in all the boxes that apply.)

Property is:

- A** owned by a religious institution or used for religious purposes.
- B** removed from its original location.
- C** a birthplace or grave.
- D** a cemetery.
- E** a reconstructed building, object, or structure.
- F** a commemorative property.
- G** less than 50 years of age or achieved significance within the past 50 years

Narrative Statement of Significance

(Explain the significance of the property on one or more continuation sheets.)

9. Major Bibliographical References

Bibliography

Cite the books, articles, and other sources used in preparing this form on one or more continuation sheets.)

Previous documentation on file (NPS):

- preliminary determination of individual listing (36 CFR 36) has been requested
- previously listed in the National Register
- previously determined eligible by the National Register
- designated a National Historic Landmark
- recorded by Historic American Buildings Survey # _____

Areas of Significance

(Enter categories from instructions)

EDUCATION

BLACK ETHNIC HERITAGE

ARCHITECTURE

Period of Significance

1938-1948

Significant Dates

1938

Significant Person

N/A

Cultural Affiliation

N/A

Architect/Builder

unknown

Primary location of additional data:

- State Historic Preservation Office
- Other State Agency
- Federal agency
- Local government
- University
- Other

Name of Repository

Orange Park Negro Elementary School
Name of Property

Clay Co., FL
County and State

10. Geographical Data

Acreage of Property less than 1 acre

UTM References

(Place additional references on a continuation sheet.)

1	1	7	4	3	2	2	0	0	3	3	3	7	3	0	0
	Zone		Easting						Northing						
2															

3															
	Zone		Easting						Northing						
4															

See continuation sheet

Verbal Boundary Description

(Describe the boundaries of the property on a continuation sheet.)

Boundary Justification

(Explain why the boundaries were selected on a continuation sheet.)

11. Form Prepared By

name/title Sidney Johnston/Robert O. Jones

organization Bureau of Historic Preservation date June 1998

street & number R.A. Gray Building, 500 S. Bronough Street telephone (850) 487-2333

city or town Tallahassee state Florida zip code 32399-0250

Additional Documentation

Submit the following items with the completed form:

Continuation Sheets

Maps

A **USGS map** (7.5 or 15 minute series) indicating the property's location.

A **Sketch map** for historic districts and properties having large acreage or numerous resources.

Photographs

Representative **black and white photographs** of the property.

Additional items

(check with the SHPO or FPO for any additional items)

Property Owner

(Complete this item at the request of SHPO or FPO.)

name Town of Orange Park

street & number 2042 Park Avenue telephone 904-264-9565

city or town Orange Park state FL zip code 32073

Paperwork Reduction Act Statement: This information is being collected for applications to the National Register of Historic Places to nominate properties for listing or determine eligibility for listing, to list properties, and amend listings. Response to this request is required to obtain a benefit in accordance with the National Historic Preservation Act, as amended (16 U.S.C. 470 et seq.).

**United States Department of the Interior
National Park Service**

**NATIONAL REGISTER OF HISTORIC PLACES
CONTINUATION SHEET**

Section number 7 Page 1 **ORANGE PARK NEGRO ELEMENTARY
SCHOOL, ORANGE PARK, CLAY CO., FL**

SUMMARY

The Orange Park Negro Elementary School is located at 440 McIntosh Avenue in the Town of Orange Park, Clay County, Florida. The 1938, frame vernacular building has a "L" footprint, has a brick pier foundation infilled with wood. The exterior is horizontal siding, and the cross gable roof is surfaced with asphalt shingles. Double-hung, 4/4, wooden sashes fill the main windows. Although the building has been adapted to serve as a neighborhood service center, the building retains its architectural integrity to a high degree. The school is nominated under the Multiple Property cover Historic Architectural Resources of Orange Park under the Property Type F.3, public. A non-contributing concrete building is within the nomination boundary.

SETTING

The Town of Orange Park is located fifteen miles southwest of downtown Jacksonville on the west bank of the St. Johns River. The school is located five blocks from the river in the original town plan of Orange Park. East/west Kingsley Avenue and north/south U.S. Highway 17 serve as primary corridors through Orange Park. McIntosh Avenue, an important secondary street, runs parallel to and one block north of Kingsley Avenue, and intersects with U.S. Highway 17 two blocks to the east of the school. Vegetation consists of oak trees and small shrubs. The school lies at the core of Orange Park's historic African-American community. Few additional historic buildings remain in the neighborhood, and it is the best preserved of those buildings. A small group of residences lie to the east and north, with several residences and two churches to the west.

PHYSICAL DESCRIPTION

Exterior

Fenestration consists of 6/6, and 4/4, double-hung wooden sashes, and 3-light hopper windows. Brick piers, infilled with railroad ties, support the building.

The main (north) facade fronts McIntosh Avenue (Photos #1&2). It has an irregular appearance formed by a front-facing, cutaway gable roof that shelters the main entrance porch at the northeast. The overhang roof is

**United States Department of the Interior
National Park Service**

**NATIONAL REGISTER OF HISTORIC PLACES
CONTINUATION SHEET**

Section number 7 Page 2 **ORANGE PARK NEGRO ELEMENTARY
SCHOOL, ORANGE PARK, CLAY CO., FL**

supported by four battered square columns, and four concrete steps access the porch. Double, two panel wooden doors access the eastern block of the building, and a single, two panel wooden door accesses the west block of the building from this porch. A square louvered vent is within the peak of the enclosed gable. A concrete ramp rises to the east end of the porch. A side-facing cross-gable block intersects the west end of the porch, and extends to the west. This wall is filled with four pairs of 4/4, double-hung sash windows.

The east elevation has four pairs of 4/4-light double hung sashes with a single 6/6, double-hung sash window appearing at the southeast corner (Photo #2).

The south elevation is the rear of the school. The gable end of the east block has no windows and a louvered vent in the gable peak (Photo #3). A gable roofed porch shelters a single door on the west corner of the west block. A covered walkway spans the south side of the west block, connecting this west door and the door in the east block (Photo #4). Three transom hopper windows are in the wall of the west block, and an external brick chimney is present there. The walkway provides access to a small concrete block restroom building set between both blocks of the school.

The west elevation is the gable end of the west wing with two 6/4, double-hung wood sash windows, and square vent in the gable peak (Photo #5). The rear walkway and restroom is visible to the south.

Interior

The interior of the school retains its original circulation pattern, and materials. The building historically contained one large classroom, an auditorium, and a kitchen. A partition in the auditorium/east block created a weight room. Partitions in the classroom/west block created storage rooms. Ceilings finished with a tongue-in-groove wood siding, are present in the east block, but are covered with acoustic tile in the west block. The same wood siding covers the walls. The pine floors remain in good condition, and some of the original doors and hardware protect entrances and divide interior spaces.

The west entrance opens into an office (the original classroom) (Photos #6&7). Three small storage rooms are against the south wall. Along the west wall lies the original kitchen, little more than a narrow galley with a rectangular counter bay where students received their lunches. Doors flank the counter bay.

**United States Department of the Interior
National Park Service**

**NATIONAL REGISTER OF HISTORIC PLACES
CONTINUATION SHEET**

Section number 7 Page 3

**ORANGE PARK NEGRO ELEMENTARY
SCHOOL, ORANGE PARK, CLAY CO., FL**

The double-door east entrance opens into the auditorium that has been divided into a storage room on the north, and a weight training room to the south (Photos #8&9). The stage supports much of the weight training equipment. It has its original features, including a square opening flanked by a pair of staging areas and dressing rooms, kick panel, and heart pine flooring.

NON-CONTRIBUTING OUTBUILDING

A small concrete block building with a gable roof lies behind the school connected by a hallway, but physically separated from the historic building. It serves as a restroom.

ALTERATIONS

The concrete restroom was added in the early 1950s, along with the wooden hallway, and its overhang extension of the roof. More recently the partitions were added to create the weight lifting room and storage areas.

**United States Department of the Interior
National Park Service**

**NATIONAL REGISTER OF HISTORIC PLACES
CONTINUATION SHEET**

Section number 8 Page 1 **ORANGE PARK NEGRO ELEMENTARY
SCHOOL, ORANGE PARK, CLAY CO., FL**

SUMMARY

The Orange Park Negro Elementary School is nominated to the National Register under criteria A and C at the local level in the areas of Architecture, Education, and Black Ethnic History. The building possesses significance as Orange Park's only historic African American school. Built c.1938, the building served as a school throughout the historic period. The frame vernacular building embodies a particular type of construction designed for a single purpose, and is the one of few historic African American schools remaining in northeast Florida. The design of the building is consistent with national and statewide trends in architecture. The building contributes to the Historic Architectural Resources of Orange Park Multiple Property cover under the associated historic contexts of the *Great Depression / World War II and Aftermath Development*, and the Property Type F.2.

HISTORICAL SIGNIFICANCE

Organized in 1858, Clay County operated a decentralized school system until the late nineteenth century, when a board of public instruction was established to administer education policies and manage tax districts for the construction of schools. Improvements in the system resulted after the board increased its supervision of the system, raised taxes, and required compulsory attendance. Nevertheless, school policy and terms were largely a function of local control by trustees. Many schools operated with little regularity and efficiency, often opening and closing at the whim of parent requests that their children be released to help during peak planting and harvest seasons. The establishment in 1890 of the privately-operated Orange Park Normal and Industrial School dramatically enhanced the educational opportunities for Clay County's African-American children. The Normal School closed, however, in 1913 after struggling through years of intimidation by the state superintendent and pressure from the Ku Klux Klan.

An African American settlement had emerged in Orange Park in the early 1880s. Located north of Kingsley Avenue between Plainfield Avenue and U.S. 17, the area supported farmers and laborers who worked in fields, for naval stores companies, and for the railroad. R.W. Wheeler and A. Anderson helped organize St. John Baptist Church in 1881 and a sanctuary was built on Mound Street. Residents in 1900 included a grocer, general store keeper,

United States Department of the Interior
National Park Service

**NATIONAL REGISTER OF HISTORIC PLACES
CONTINUATION SHEET**

Section number 8 Page 2 **ORANGE PARK NEGRO ELEMENTARY
SCHOOL, ORANGE PARK, CLAY CO., FL**

carpenter, preacher, saw mill laborers, railroad section hands and porters, and domestic servants. By 1910, Duval Lodge #14, known as the "Good Samaritans," had organized and developed a meeting hall on McIntosh Avenue. The club house of the Lodge #151 F & AM was located farther northwest on Plainfield Avenue. By 1917, the neighborhood consisted of approximately fifteen buildings, including a church, school, and residences.

In 1896, Clay County's school board supported nine African- American schools with 238 students. About 1915, to help meet the needs of Orange Park's students after the closure of the Normal Institute, a public school was built on McIntosh Avenue in lot 3, block 9, section 2, located one-half block west of U.S. Highway 17. By the late 1930s, that building had deteriorated and was replaced by the present building. In 1944, the school board sold its c.1915 building and property.

In the mid 1920s, Clay County contained twenty-five public school buildings, valued at only \$99,000. Many were one-room frame buildings. Dependent upon a meager tax base, the school board made only occasional progress to improve its infrastructure. Two brick, and several wood frame buildings replaced inadequate facilities in the late 1920s. In the 1930s, to confront the financial hardships associated with the Great Depression, the board further consolidated schools, thereby reducing the faculty, expenditures, and maintenance of its buildings, which in 1936 numbered twenty-one valued at \$144,650.

Completed about 1938, the Orange Park Negro school was one of few buildings constructed by the school board during the 1930s. Only \$1,844 was spent by the board on new African-American schools during the 1938/1939 school year which was also the approximate cost of construction for the Orange Park school building. Teresa Miller of Orange Park served as the teacher of the new school, serving the role of educator and administrator between the late 1930s and the late 1950s. Few Florida county school boards appointed principals to administer African-American schools, and in Clay County four male and ten female teachers educated African- American youths during the 1938/1939 school year. Enrollment amounted to forty-one pupils in elementary schools, and twenty high school students.

In the early 1950s, a concrete block rest-room was built behind the school and joined to it by a covered hallway. During this period, the school was named for its long-time teacher, Teresa Cogswell Miller. About 1955, the school board financed the construction of a new school. The school board later sold the property to the Town of Orange Park, which leases it to the Putnam-Clay-Flagler Economic Opportunity Council, Inc. The

United States Department of the Interior
National Park Service

**NATIONAL REGISTER OF HISTORIC PLACES
CONTINUATION SHEET**

Section number 8 Page 3 **ORANGE PARK NEGRO ELEMENTARY
SCHOOL, ORANGE PARK, CLAY CO., FL**

Council provides social services to youth in Orange Park. Willie Mae Beatty, a former student of Teresa Miller, attended grade school in the building, where she now supervises the social service center.

ARCHITECTURAL SIGNIFICANCE

The frame vernacular school is a small, but good example of the one of few historic buildings within the community, and one of the few historic African-American schools remaining in Clay County. The school is a significant historic landmark in Orange Park, and retains its architectural integrity and character.

School buildings are a particular building type. Turn-of-the century school reformers emphasized practical interior improvements with regard to illumination, ventilation, sanitation, furniture, and equipment. They asserted that a formal architectural design applied to a schoolhouse contributed to the development of a student's morals and good character. School design competitions, such as those sponsored by the editors of the *White Pine Series* in 1921, went far to promote quality design and materials in the construction of schools.

In small Florida towns, most African-American schools were wood frame buildings that rarely survived more than two decades. The initial schools were often replaced by larger wood frame buildings. Nevertheless, the replacement buildings were characteristically small, measuring roughly 2,000 square feet. Orange Park's Negro Elementary School shares characteristics similar to African-American schools developed in other small Florida towns during the early twentieth century, such as those documented in Lake Helen in Volusia County, and Oakland and Tangerine in Orange County. These schools have entrance porches, groupings of windows, and contained single classrooms with an auditorium.

United States Department of the Interior
National Park Service

**NATIONAL REGISTER OF HISTORIC PLACES
CONTINUATION SHEET**

Section number 9,10 Page 1 **ORANGE PARK NEGRO ELEMENTARY
SCHOOL, ORANGE PARK, CLAY CO., FL**

BIBLIOGRAPHY

Biennial Report of the Superintendent of Public Instruction of the State of Florida. Tallahassee, 1897, 1911, 1917, 1925, 1927, 1931, 1937, 1939, 1941.

Bureau of the Census, Twelfth Census, 1900. Clay County, 8th precinct.

Maddex, Diane, ed. *Built in the U.S.A.* Washington, 1985.

Minutes. Clay County School Board. Green Cove Springs, Florida.

Richardson, Joe. "The Nest of Vile Fanatics': William N. Sheats and the Orange Park School." *Florida Historical Quarterly*. 64 (April 1986):393-406.

U.S. Geological Survey. *Orange Park*. Washington, 1917.

Willie Mae Beatty, informant, July, 1996.

VERBAL BOUNDARY DESCRIPTION

The boundary encloses lot 4, block 8, section 2 of the Town of Orange Park.

BOUNDARY JUSTIFICATION

The boundary encloses the property historically associated with Orange Park's Negro Elementary School.

**United States Department of the Interior
National Park Service**

**NATIONAL REGISTER OF HISTORIC PLACES
CONTINUATION SHEET**

Section number Photographs Page 1 **ORANGE PARK NEGRO ELEMENTARY
SCHOOL, ORANGE PARK, CLAY CO., FL**

PHOTOGRAPHIC LIST

1. Orange Park Negro Elementary School, 440 McIntosh Ave., Orange Park
2. Orange Park Florida
3. Sidney Johnston
4. 1996
5. Historic Property Associates, St. Augustine, Florida
6. Front (north) porch, facing south
7. Photo #1 of 9

Numbers 1-5 are the same for the remaining photographs.

6. Main (north) facade and east elevation, facing southwest
7. Photo #2 of 9

6. Rear (south) elevation, facing north
7. Photo #3 of 9

6. South elevation and hallway, facing east
7. Photo #4 of 9

6. West elevation, Facing east
7. Photo #5 of 9

6. Interior of classroom/office, facing southwest
7. Photo #6 of 9

6. Classroom/office, facing east
7. Photo #7 of 9

6. Auditorium/storage, door to weight room, facing south
7. Photo #8 of 9

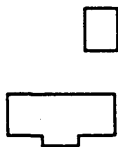
6. Auditorium/weight room, stage, facing southeast
7. Photo #9 of 9

ORANGE PARK NEGRO ELEMENTARY SCHOOL

SITE PLAN



461



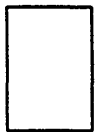
433



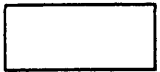
339

447
MCINTOSH AVENUE

504

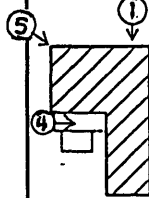


1920



1918

440



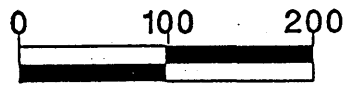
418



406



BOUNDARY



SCALE IN FEET

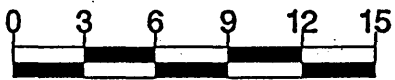
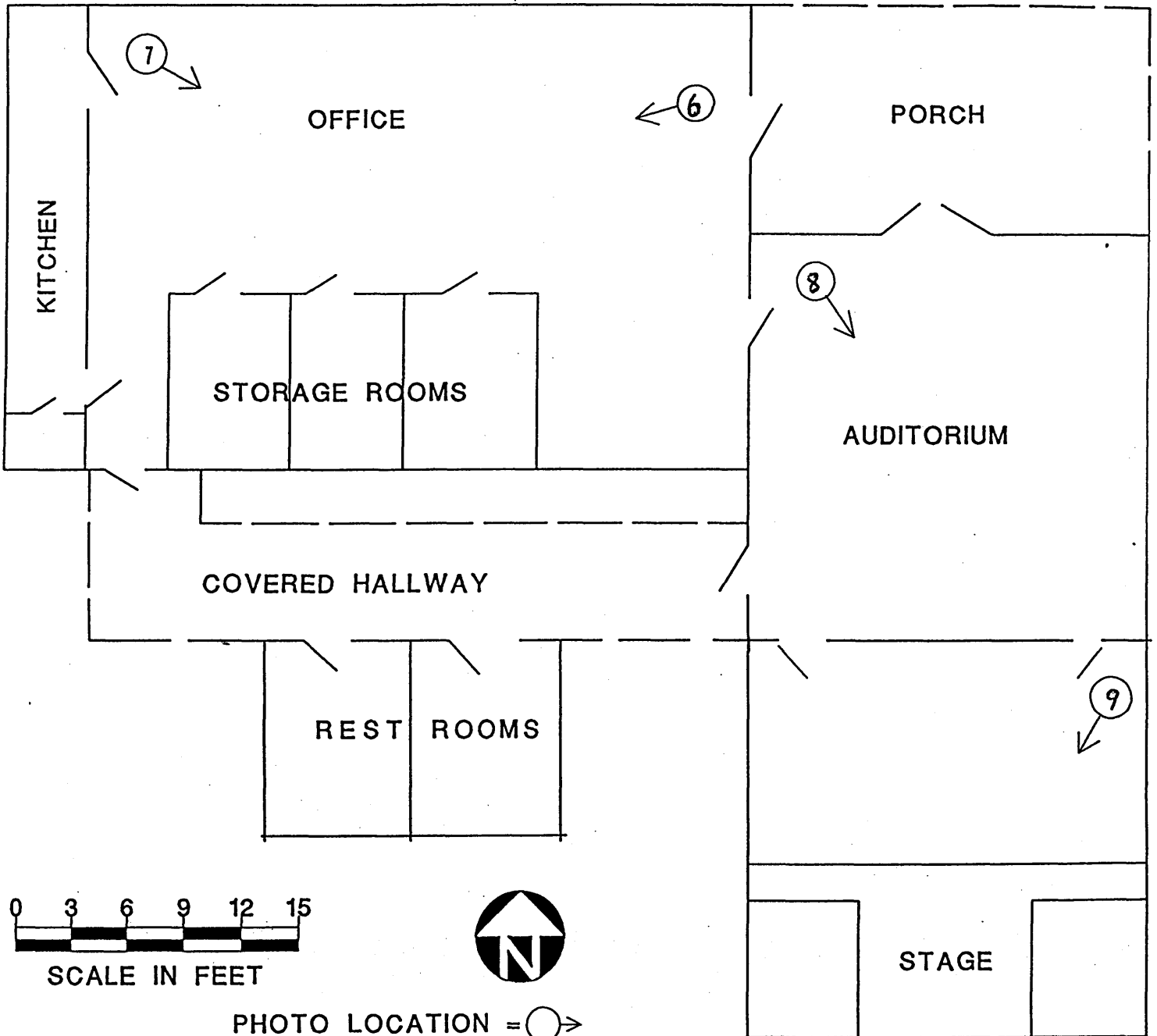


KINGSLEY AVENUE

PHOTO LOCATION = 

ORANGE PARK NEGRO ELEMENTARY SCHOOL

FLOOR PLAN



SCALE IN FEET



PHOTO LOCATION = ○ →