

John Black.
Came to
Brooklyn
in 1900



Mother,
Sarah
Black



Buck Adams Farm Brooklyn N.Y.

1109

Franklin Landers - Black and Adams Farm

Brooklyn, IN

Photo 1 of 19



Franklin Landers - Black and Adams Farm

Brooklyn, IN

Photo 2 of 19



Franklin Landers - Black and A dams Farm

Brooklyn, IN

Photo 3 of 19



Franklin Landers - Black and Adams Farm

Brooklyn, IN

Photo 4 of 19



Franklin Landers - Black and Adams Farm

Brooklyn, IN

Photo 5 of 19



Franklin Landers - Black and Adams Farm

Brooklyn, IN

Photo 6 of 19



Franklin Landers - Black and Adams Farm

Brooklyn, IN

Photo 7 of 19



Franklin Landers - Black and Adams Farm

Brooklyn, IN

Photo 8 of 19



Franklin Landers - Black and Adams Farm

Brooklyn, IN

Photo 9 of 19



Franklin Landers - Black and Adams Farm

Brooklyn, IN

Photo 10 of 19



Franklin Landers - Black and Adams Farm

Brooklyn, IN

Photo " of 19



Franklin Landers - Black + Adams Farm

Brooklyn, Morgan Co., IN

Photo 12 of 19



Franklin Landers - Black + Adams Farm

Brooklyn, Morgan Co., IN

Photo 13 of 19



Franklin Landers - Black - Adams Farm

Brooklyn, Morgan Co., IN

Photo 14 of 19



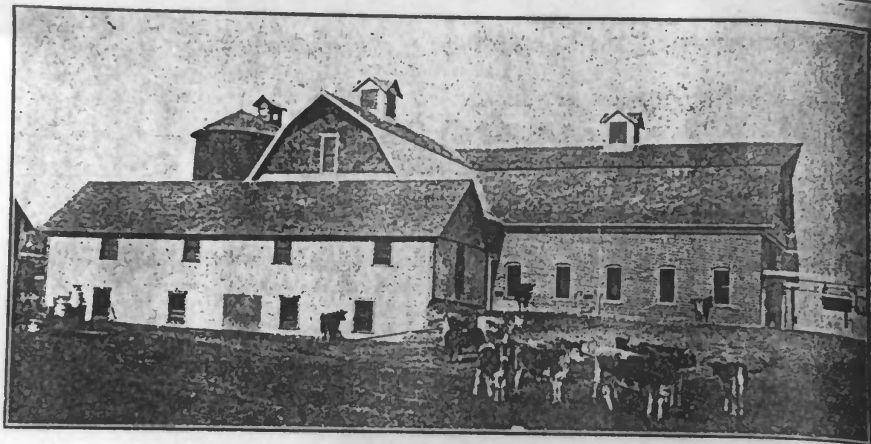
Franklin Landers - Black + Adams Farm

Brooklyn, Morgan Co., IN

Photo 15 of 19

to increase
conceive of
work for a
such a small
after real-
ell fed with
ghage would
tirely clover
out as it is,
feeding the
Perhaps the
could have
ome doubt
duce a little
eding nutri-
an they are
that is be-
succulence,
advantages
at it cheap-
to say that
on will in-
ch over 40
ws are phe-

additional
work more
etter condi-
the food-
ivisible to
cottonseed



BRICK DAIRY BARN AT MT. AETNA STOCK FARM.

OWNED BY BLACK & ADAMS, BROOKLYN, IND.

sent the thermometer below 48 degrees, and as a rule it keeps about 55 degrees, insuring a comfortable temperature for the cattle notwithstanding weather conditions outside. No artificial heat is used, but the animal heat and perfect system of ventilation insure a reason-

of 50-foot hose from hydrant in center of barn. When cows have drunk their fill, a centre plug is taken out of trough and waste water goes to field through sewers. Water is supplied from a 200-barrel tank in loft of barn, and tank is supplied by two sources. A windmill

Franklin Landers - Black + Adams Farm

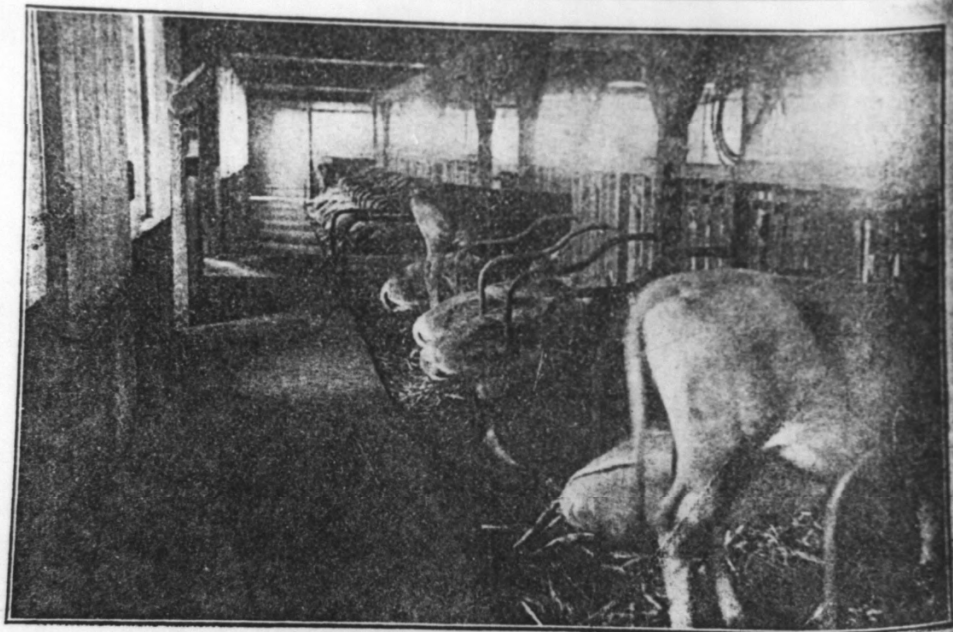
Brooklyn, Morgan Co., IN

Photo 16 of 19

Base-
of 25
veral
shen.
soline
grind

Barn
ollow
ing a
self-
er in
barn
tons;
with
ay in
uired
rt of

ven-
s 600
n is
also
bout
Sash
ving
eans
dest
ever



VIEW OF INTERIOR, BLACK & ADAMS' BARN.

Franklin Landers - Black - Adams Farm

Brooklyn, Morgan Co., IN

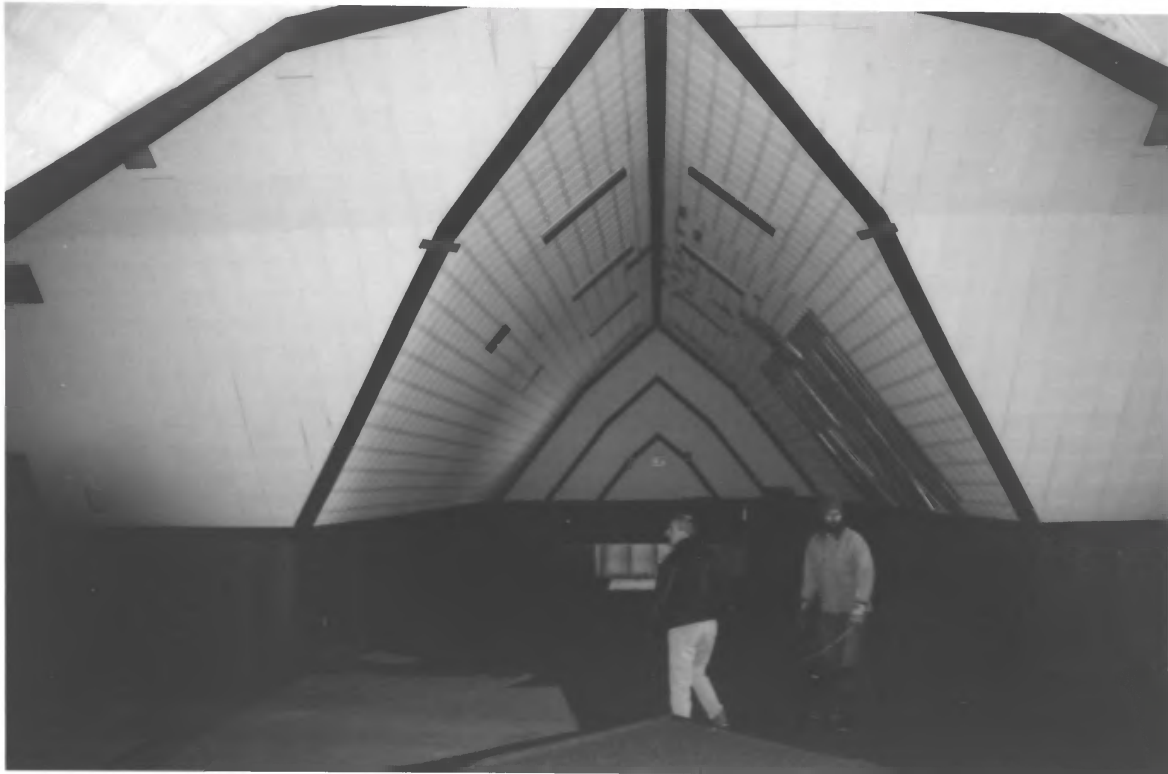
Photo 17 of 19



Franklin Landers - Black & Adams Farm

Brooklyn, Morgan Co., IN

Photo 18 of 19



Franklin Landers - Black and Adams Farm

Brooklyn, Morgan Co., IN

Photo 19 of 19