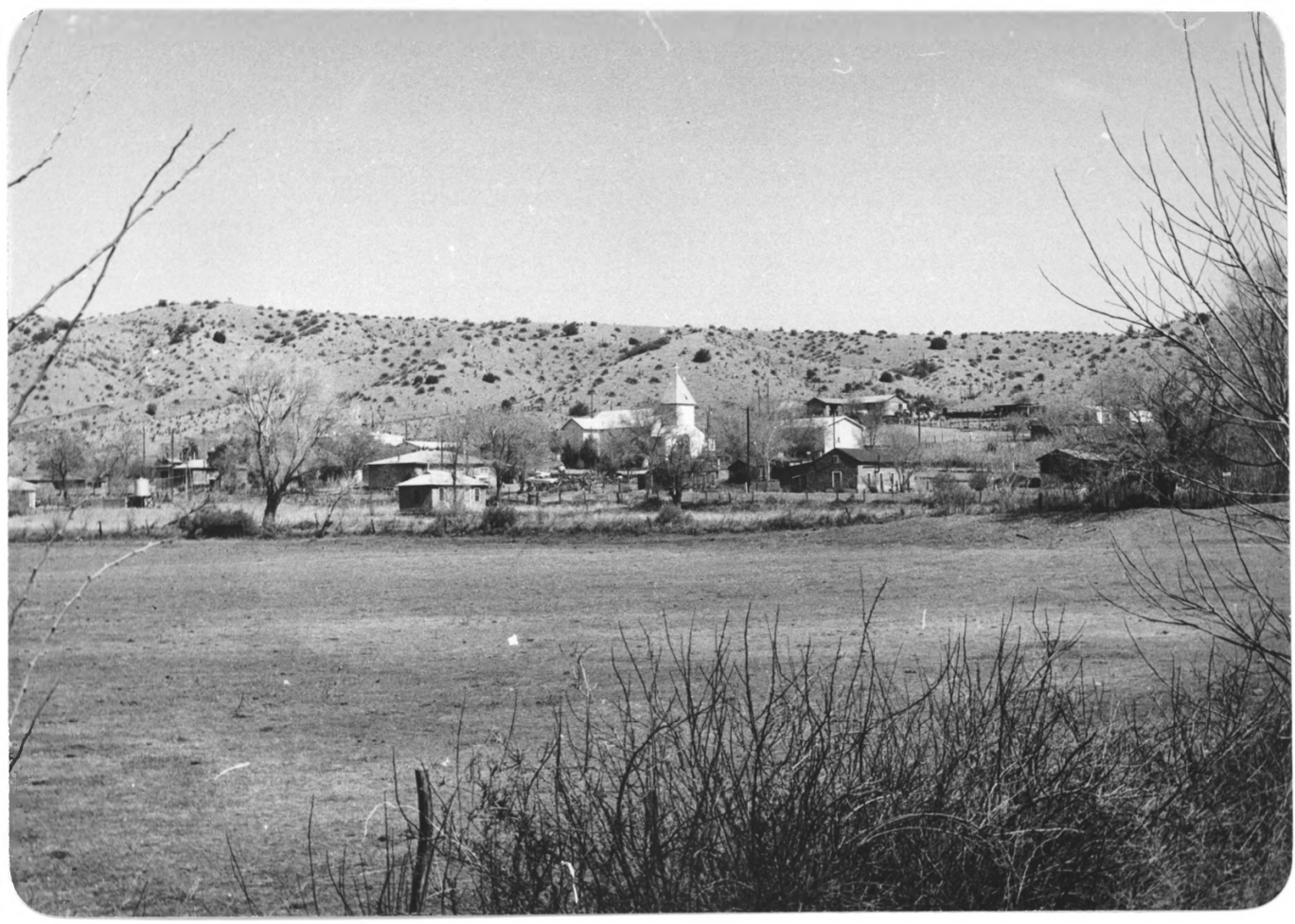




1. San Lorenzo Historic  
District; Historic Resources of  
the Mimbres Valley, Grant County,  
N.M.; C. Wilson; 1987; NMSHDP;  
looking N across the Mimbres  
valley to San Lorenzo.



2. San Lorenzo Historic  
District; Historic Resources of  
the Mimbres Valley, Grant County,  
N.M.; D. Claridge; 1984; Silver  
City Museum; looking N.



3. San Lorenzo Historic  
District; Historic Resources of  
the Mimbres Valley, Grant County,  
N.M.; D. Claridge; 1984; Silver  
City Museum; looking W.





4. San Lorenzo Historic District; Historic Resources of the Mimbres Valley, Grant County, N.M.; D. Claridge; 1984; Silver City Museum; looking NW up Galaz Street.





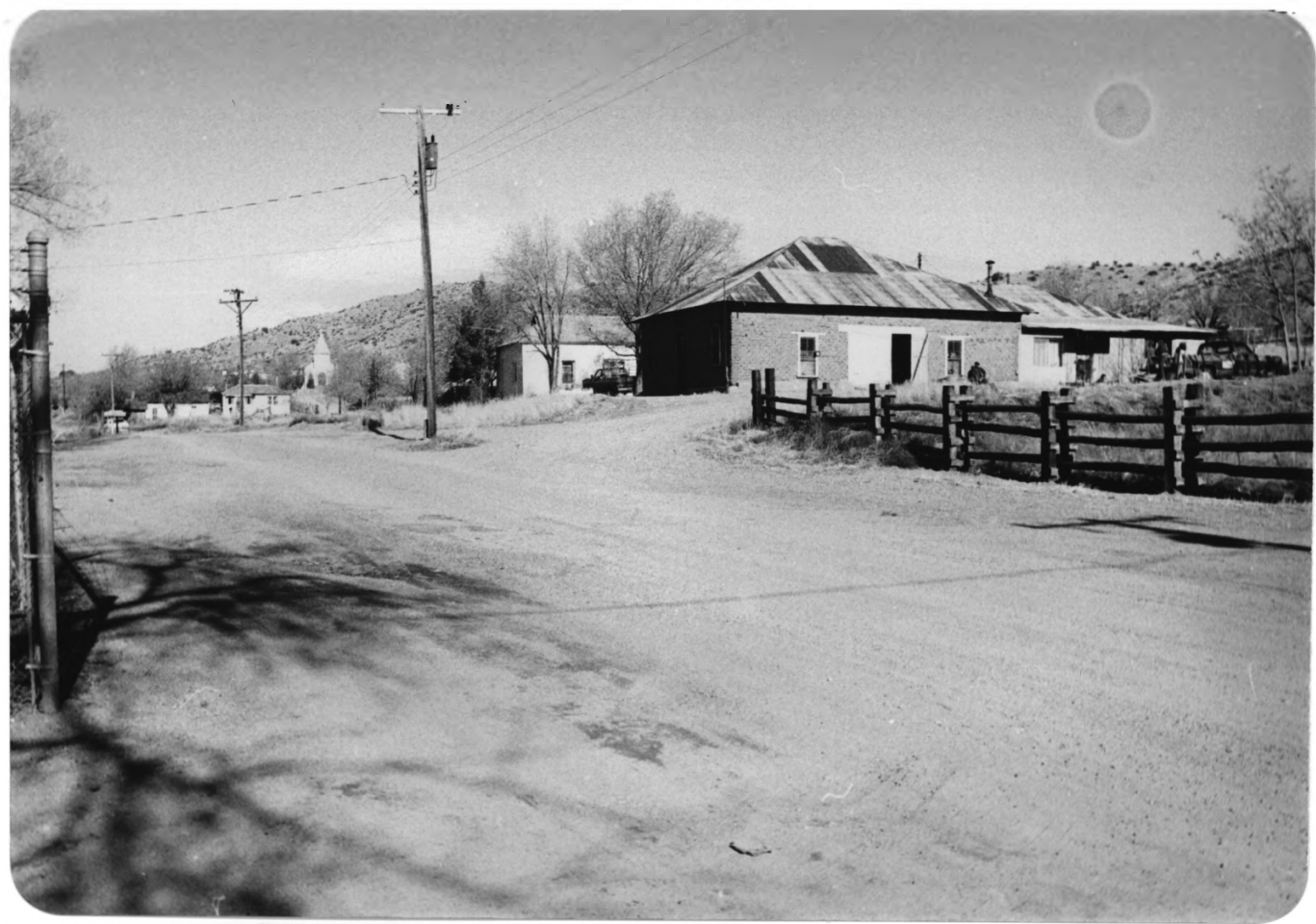
5. San Lorenzo Historic  
District; Historic Resources of  
the Mimbres Valley, Grant County,  
N.M.; D. Claridge; 1984; Silver  
City Museum; looking SE down  
Galaz Street.



6. Galaz House (# 29); San  
Lorenzo Historic District;  
Historic Resources of the Mimbres  
Valley, Grant County, N.M.;  
D. Claridge; 1984; Silver City  
Museum; looking NW; contributing.



7. San Lorenzo Historic  
District; Historic Resources of  
the Mimbres Valley, Grant County,  
N.M.; D. Claridge; 1984; Silver  
City Museum; looking SE on Galaz  
Street.





8. San Lorenzo Historic District; Historic Resources of the Mimbres Valley, Grant County, N.M.; D. Claridge; 1985; Silver City Museum; looking NE up Galaz Street.



9. San Lorenzo Historic  
District; Historic Resources of  
the Mimbres Valley, Grant County,  
N.M.; D. Claridge; 1984; Silver  
City Museum; looking N up San  
Lorenzo Street.



10. San Lorenzo Historic  
District; Historic Resources of  
the Mimbres Valley, Grant County,  
N.M.; D. Claridge; 1985; Silver  
City Museum; looking W.



11. San Lorenzo Church (# 1);  
San Lorenzo Historic District;  
Historic Resources of the Mimbres  
Valley, Grant County, N.M.; C.  
Wilson; 1987; NMSHDPD; looking SE  
at apse and transept;  
contributing.





12. Grigonio Galaz House (# 30);  
San Lorenzo Historic District;  
Historic Resources of the Mimbres  
Valley, Grant County, N.M.; C.  
Wilson; 1987; NMSHDPD: looking S.



13. Grigonio Galaz Barn (# 36);  
San Lorenzo Historic District;  
Historic Resources of the Mimbres  
Valley, Grant County, N.M.; C.  
Wilson; 1987; NMSHDPD; looking NW.

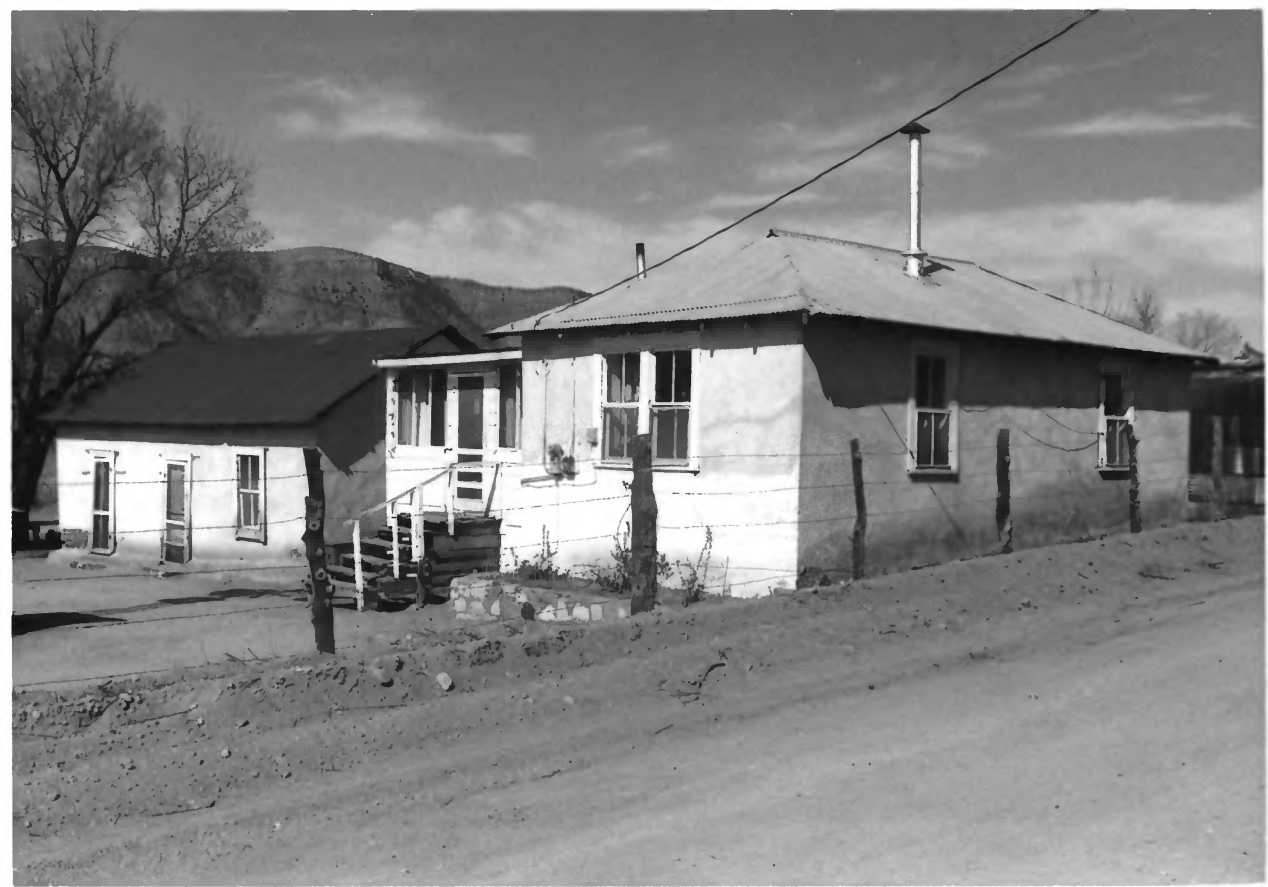


14. Jim Galaz Store and House (#  
27); San Lorenzo Historic  
District; Historic Resources of  
the Mimbres Valley, Grant County,  
N.M.; C. Wilson; 1987; NMSHDP;  
looking W; contributing.

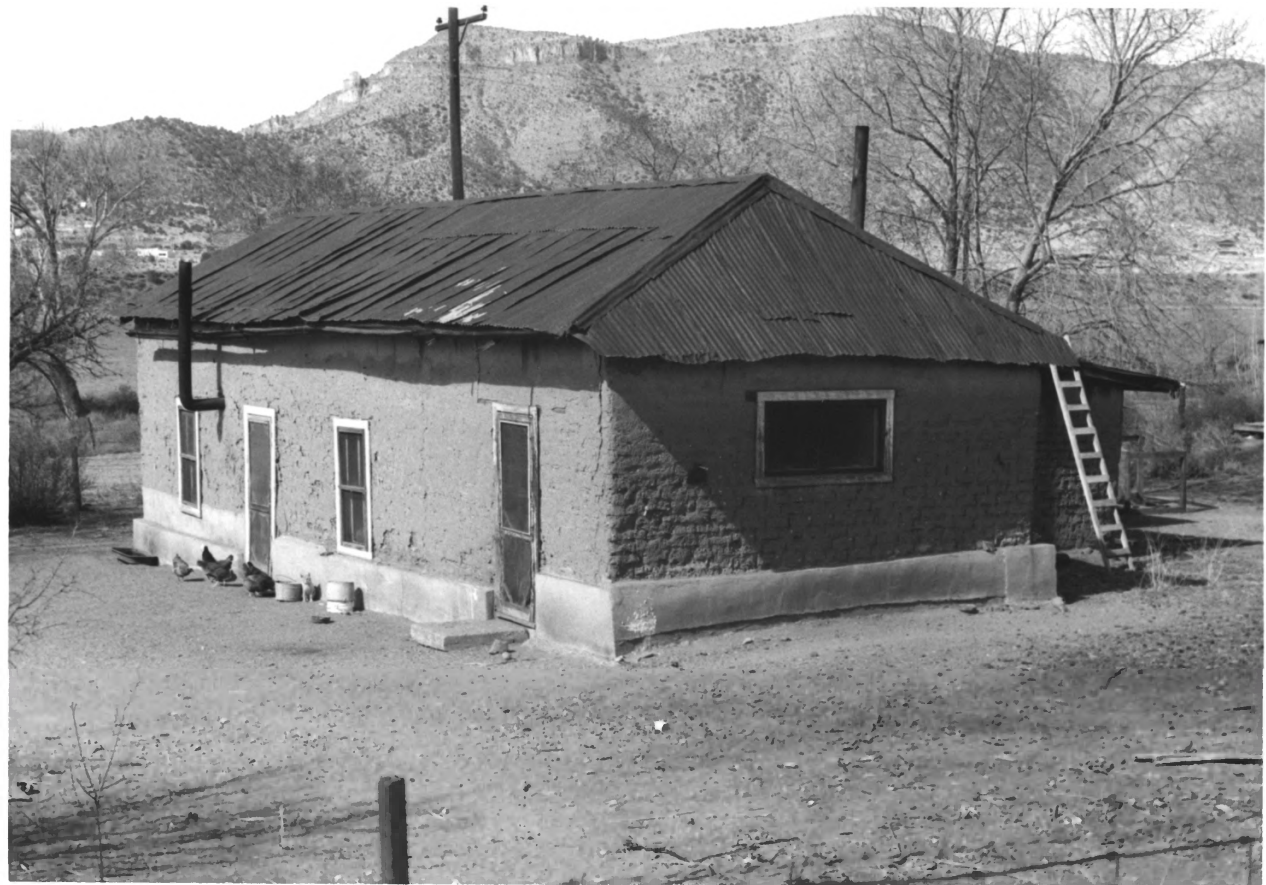




15. House (# 22); San Lorenzo  
Historic District; Historic  
Resources of the Mimbres Valley,  
Grant County, N.M.; C. Wilson;  
1987; NMSHDP; looking N;  
contributing.



16. Houses (#13 left, 14); San Lorenzo Historic District; Historic Resources of the Mimbres Valley, Grant County, N.M.; C. Wilson; 1987; NMSHDP; looking W; contributing buildings.

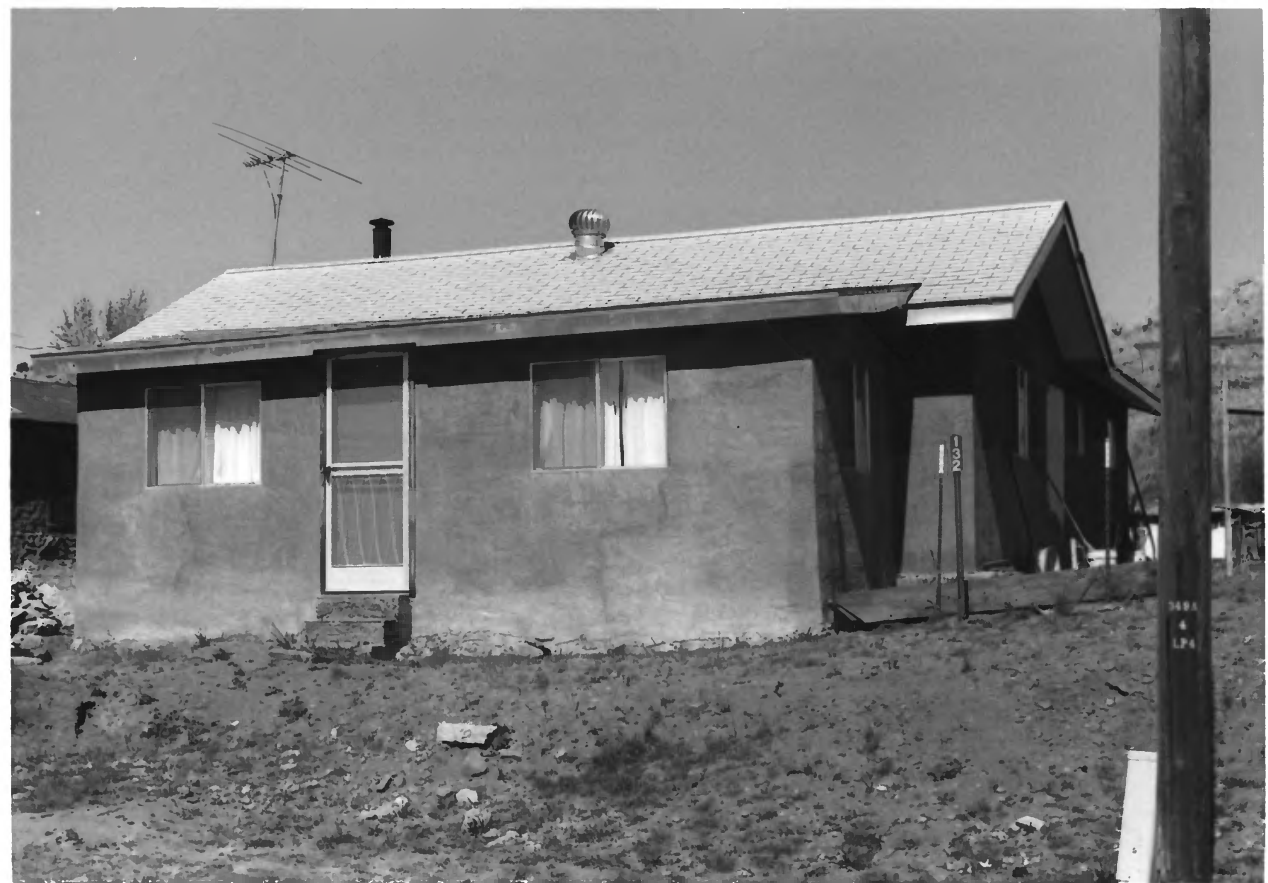


17. Jesus Aquilar House (# 12);  
San Lorenzo Historic District;  
Historic Resources of the Mimbres  
Valley, Grant County, N.M.; C.  
Wilson; 1987; NMSHDPD; looking W;  
contributing.



18. House (# 5); San Lorenzo  
Historic District; Historic  
Resources of the Mimbres Valley,  
Grant County, N.M.; C. Wilson;  
1987; NMSHDP; looking NW;  
contributing.





19. Strong-Roybal House (# 35);  
San Lorenzo Historic District;  
Historic Resources of the Mimbres  
Valley, Grant County, N.M.; C.  
Wilson; 1987; NMSHDP; looking N;  
non-contributing.