

United States Department of the Interior
National Park Service

NATIONAL REGISTER OF HISTORIC PLACES
REGISTRATION FORM



=====

1. Name of Property

=====

Historic Name: Evergreen Cemetery

Other Name/Site Number: WA 0153

=====

2. Location

=====

Street & Number: Corner of University & William Streets

Not for Publication: N/A

City/Town: Fayetteville

Vicinity: N/A

State: AR County: Washington Code: AR 143 Zip Code: 72701

=====

3. Classification

=====

Ownership of Property: Public - local

Category of Property: Site

Number of Resources within Property:

Contributing	Noncontributing
<u>1</u>	<u>1</u> buildings
<u>1</u>	<u>1</u> sites
<u>1</u>	<u>1</u> structures
<u>1</u>	<u>1</u> objects
<u>1</u>	<u>1</u> Total

Number of contributing resources previously listed in the National Register: N/A

Name of related multiple property listing: N/A

Evergreen Cemetery
Name of Property

Washington Co, Arkansas
County and State

=====

4. State/Federal Agency Certification

=====

As the designated authority under the National Historic Preservation Act of 1986, as amended, I hereby certify that this X nomination _____ request for determination of eligibility meets the documentation standards for registering properties in the National Register of Historic Places and meets the procedural and professional requirements set forth in 36 CFR Part 60. In my opinion, the property X meets _____ does not meet the National Register Criteria. _____ See continuation sheet

Cathryn A. Slater
Signature of certifying official

9-18-97
Date

Arkansas Historic Preservation Program
State or Federal agency and bureau

In my opinion, the property _____ meets _____ does not meet the National Register criteria. _____ See continuation sheet.

Signature of commenting or other official

Date

State or Federal agency and bureau

=====

5. National Park Service Certification

=====

I, hereby certify that this property is:

- ☒ entered in the National Register
_____ See continuation sheet.
☐ determined eligible for the
National Register
_____ See continuation sheet.
☐ determined not eligible for the
National Register
☐ removed from the National Register
_____ other (explain): _____

Edson H. Ball 10/30/97

Signature of Keeper

Date of Action

Evergreen Cemetery
Name of Property

Washington Co, Arkansas
County and State

=====

6. Function or Use

=====

Historic: Funerary Sub: Cemetery

Current : Funerary Sub: Cemetery

=====

7. Description

=====

Architectural Classification:

N/A

Materials: foundation N/A roof N/A
walls N/A other N/A

Describe present and historic physical appearance:

Fayetteville's Evergreen Cemetery is approximately four-and-one-half acres in size and contains approximately 3000 known burials. The earliest public cemetery in the city of Fayetteville, the Evergreen Cemetery contains grave markers and monuments in a variety of different types and styles. The cemetery contains approximately four sections which are separated by unpaved roadways. The cemetery is located on the side of a sloping hill that begins at the northern boundary of the cemetery and runs south.

Elaboration

The Evergreen Cemetery is roughly four-and-one-half acres in size. It is bounded on the south by Center Street, on the east by University, on the north by William Street, and on the west by a boundary established by the discontinuous path of Hill Avenue. The cemetery itself is sited on a hill that runs north-south. The four burial "sections" are divided by unpaved avenues that provide access to each section. The cemetery once had wide carriage drives running east to west, which were sold as plots when the horse and carriage became obsolete. For this reason, some of the oldest areas of the cemetery may contain bands of much more recent graves. The earliest graves on the site are those of Melissa Pulliam (b.1821-d.1849), George Thomas Stirman (b.1842-d.1847) and Mary Elizabeth Pollard (b.1844-d. 1848).

Evergreen Cemetery
Name of Property

Washington Co, Arkansas
County and State

While the Pollard grave has a rough fieldstone grave of the type that was common in the 1840's, and is thought to be original, the other stones were probably replaced at some point.

Noteworthy among the artistic grave markers is the Gregg monument-a large obelisk-shaped zinc monument featuring elaborate detailing which includes columns, arches, and a lyre. The Yell monument is also obelisk-like in form, although much simpler than the Gregg monument. Faced in white marble, the Yell marker contains little detail with the primary ornamentation being the inscriptions themselves. The Van Winkle monument is also obelisk-shaped, and features a raised swag of flowers at the top, and a Masonic emblem is also cast into the tombstone on one side.

One of the most noticeable markers in the cemetery is located at the center of the Byrnes plot. This cast stone monument is large and cruciform in shape with a rusticated finish. Like most of the older burial plots, the Byrnes monument is located at the northern end of the cemetery and can be seen from most points in the cemetery. Other remarkable monuments include the Vandeventer gravestone which is large, horizontal and rectangular in form. It features engraved stylized flutes and geometric floral patterns. Another rectangular, tabular monument is the Evins stone which is comprised of a simple tablet shape flanked by a large simple cylindrical form at each of the four corners. The names of Arthur A. (b. 1835--d.1920) and Dorothy Jane Evins (b.1847-d.1904) are inscribed into the front of the stone in an area that has been carved to resemble a sheet of paper.

The grave markers which have been described give evidence to the fact that the monuments in the cemetery vary greatly in both the type of material used and the designs employed. The Evergreen Cemetery contains approximately 3000 burials; it remains an active burial ground, though the vast majority of the graves are historic. The site also includes a small, non-contributing caretaker's building.

Evergreen Cemetery
Name of Property

Washington Co, Arkansas
County and State

=====
8. Statement of Significance
=====

Certifying official has considered the significance of this property in relation to other properties: Local.

Applicable National Register Criteria: A

Criteria Considerations (Exceptions): D

Areas of Significance: Exploration/Settlement
Politics/Government

Period(s) of Significance: 1847-1945

Significant Dates: N/A

Significant Person(s): N/A

Cultural Affiliation: N/A

Architect/Builder: N/A

State significance of property, and justify criteria, criteria considerations, and areas and periods of significance noted above:

Summary

The Evergreen Cemetery is locally significant under criterion A by virtue of its being an integral part of the early history of Fayetteville. This cemetery includes the graves of many of the important residents of Fayetteville, several of whom have gone on to achieve national recognition. As Fayetteville's first public burial place and perhaps its largest, Evergreen Cemetery is the single and most inclusive site from which to interpret the multifarious past of this community. Thus, this nomination is also being made under criterion consideration D.

Elaboration

The first interments at Evergreen cemetery occurred less than twenty years

after Fayetteville was founded. When Washington County was organized in 1828, Fayetteville was beginning as a town and the first business was erected on the square in 1830. It was not until February 27, 1835 that a patent was issued for the town site of Fayetteville, and people began purchasing lots and opening businesses. By 1852, Fayetteville had 600 residents, and Arkansas College had a healthy enrollment of men from many areas of the state and beyond. There was also a female seminary in town which was founded by a Miss Sawyer. A town council was elected in 1852 to oversee the management of a town which by now included the following: six dry-goods stores, two grocery stores, two saloons, two hotels, three blacksmith shops, two wagon shops, one saddlery shop, two tailor shops, and one cabinet shop. The first drug store opened in 1854. In 1860 Fayetteville was connected to the rest of the world via telegraph. Colonel J. R. Pettigrew sent the first message from Fayetteville to the mayor of St. Louis on a Stebbins Telegraph Company line.

What is now the University of Arkansas opened its doors in 1871, and the St. Louis & San Francisco railroad was completed about the same time. In 1887, Fayetteville had about 4,000 inhabitants and was booming as a business community with approximately a million and a half dollars worth of business conducted in that year. A year later, the Fayetteville Electric Light and Power Company began to offer services. At this point Fayetteville could offer all of the amenities found in any other town in the state.

Although the first known private burial place is the Walker Cemetery which contains an interment dating from 1838, the earliest burials at the Evergreen Cemetery were in the 1840's. Evergreen was the first public cemetery in the town, and is located on land that was originally part of a farm owned by John Thomas which functioned as his private family burial ground. John Thomas came to Fayetteville from Missouri, and in 1846 enlisted in the war in Mexico. After returning to Fayetteville, he married Harriet E. Wilson on March 5, 1849. Harriet was the daughter of Washington Wilson, a dry goods business owner and charter member of the Masonic Lodge in 1835. John and Harriet Thomas began life together and lived in a house which was located approximately a quarter-mile from the current cemetery on Dickson Street where the "Frisco" depot stands today.

Mrs. Frank Wagner, daughter of John Thomas stated in an interview with Mrs. Homer Pearson, secretary of the Evergreen Cemetery Association on August 25, 1935:

As I told you that cemetery was started by the burial of my parents' first-born babe. A part of that land was their home, and they used that home as a family resting place for their dead. Later, my father's sister, Mrs. Milissa [sic] Pulliam, was buried there, and as the years passed, my parents buried four more little boys and a baby girl. One of the boys was shot accidentally while on a hunting trip by a neighbor and a close friend of my father's. Two of the boys died within two days of

each other, of spinal meningitis. Last of our loved ones to be placed on our plot was my mother, in October 1876. But before her passing she and my father had given quite a strip of land there to be used by others as a burial ground. Previously they had permitted two other burials on their ground. I feel now that one of those was the little Pollard grave.

Two of the earliest graves were George Thomas Stirman (b.1842-d.1847), a Thomas child, and Mary Stirman Pollard (b.1844-d.1848). The first adult buried at what is now Evergreen Cemetery was Melissa Thomas Pulliam (b.1821-d.1849), John Thomas' sister. The inscription on Melissa Pulliam's stone reads, "consort of R. P. Pulliam, who departed this life April 11, 1849, aged 28 yr's, 4 mo's, 30 d's." At some point, the Thomas' burial place became open for public burials, making it the first public burial place in Fayetteville. Mrs. Wagner also noted that the land for the Evergreen Cemetery may also have been donated by the Masons and Odd Fellows, two organizations which held burial plots not far from her father's land. It is on record that In 1871 the Evergreen Cemetery was deeded to the city of Fayetteville by the AF&AM [free and accepted masons and mountain lodge] and the IOOF [independent order of odd fellows]. Thus, it would seem that both the family and these organizations held this land until 1871.

One the most significant individuals buried at Evergreen Cemetery is Archibald Yell, a North Carolina native who gained national fame as a statesman, soldier and adventurer. The inscription on his monument reads, "Archibald Yell Born in Carolina Aug. 1797. A volunteer at the battle of New Orleans. District Judge of Ark. Territory. 1832. First member of congress from the State. Governor 1840. Elected to Congress again 44. Resigned and accepted Colonelcy of Ark Vols. Killed at Buena Vista, Feb. 22, 1847. A gallant soldier-an upright judge a fear-less champion of popular rights a sincere friend an honest man." A teen-aged volunteer at the Battle of New Orleans in the War of 1812, Yell became the federal district judge for Arkansas Territory at the age of 35. After serving two terms in the House of Representatives of the United States Congress, Archibald Yell served two terms as the second Governor of Arkansas in 1839. Yell was to become a soldier once again, and led a group of Arkansas volunteers to serve as colonel with General Zachary Taylor in the battle against the armies of Santa Anna in northern Mexico. It was on the battlefields of Mexico that Yell met his death in a calvary charge on February 23, 1847 at age 50. Although Yell is traditionally viewed as a war hero and politician, William Hughes, author of *Archibald Yell*, comments on Yell's visionary views regarding public education. An avid supporter of developing an outstanding educational system here in Arkansas and elsewhere in the country, Yell envisioned a system of publicly-supported state universities twenty-three years before Senator Justin Morrill was able to procure Congressional and Presidential approval to establish this plan in 1865. Governor Archibald Yell commented in 1842:

With a view to perpetuate our happy form of government, and to advance the great interest of the laboring classes, industry and education should in some way be interwoven; and I know of no mode better calculated to suit the conditions and character of our people than agricultural schools based upon federal donation of the general government.

With this dedication to, and appreciation of, a public education system, it is apt that Archibald Yell is buried next to the University of Arkansas campus. Yell's body was moved to its present site from the family cemetery at Waxhaws on South College Avenue on November 2, 1872. The Yell lot (Lot 24, Block 2) also contains the remains of H. J. Yell, Mary Yell, May C. Yell, and D. W. C. Yell (b. 1831-d.1861).

Another Fayetteville resident associated with the University of Arkansas, and buried near the Yell plot, is Lafayette Gregg (b.1827-d. 1891) who led the bond issue campaign to promote the location of Arkansas's University at Fayetteville rather than the competing towns of Batesville and Little Rock. A member of the first Board of Trustees of the University of Arkansas, Gregg had a role in the construction of Old Main which remains one of the most significant buildings in the state. As a soldier, Colonel Gregg was also well known as an advocate of the Union cause in the Civil War, leading the Arkansas Calvary Volunteers. He is buried in a large family plot in the north central area of the cemetery. The Gregg Monument has the following text on the west side: "L. GREGG. WAS COL. 4TH REGT. ARKS. FED'L. CAVL'Y. VOLS. WAR OF 1861 AND A JUDGE OF THE STATE CHANCERY COURT AND STATE SUPREME COURT" The south side reads as follows: "LAFAYETTE GREGG AND MARY A. SHREVE WERE MARRIED DEC. 21ST 1852. AND THEY HAD 4 SONS AND 2 DAUGHTERS."

John C. Futrall (b. 1873-d. 1939), is buried in a plot at the center of the cemetery and is best known for his position as the President of the University for twenty-five years before he was succeeded by J. William Fulbright. John Futrall's wife, Annie D. (b. 1872-d. 1964), for whom Futrall Hall on the University campus is named, was well known for welcoming interested parties into her home to show them the teaching certificate that John was awarded at age nine. A mathematical genius, John taught from a very early age and spent the majority of his life in education. Another educator buried at the cemetery is Walt Lemke (b. 1891-d. 1968) who was the head of the Journalism Department for many years and founder of the Washington County Historical Society. Other educators interred at Evergreen include Sophia Sawyer, Noah P. Gates, and John L. Buchanan.

Two of the most interesting graves associated with students are those of Talliaferro Bostick and S. C. Finley. Bostick's square, pillar-shaped monument features the Latin inscription "Talliaferro Bostick, Discipulus Ingentio ae Labore insignis Obit IX Kal. Nov. A.D. MDCCCLVI [1856] Annos

Evergreen Cemetery

Name of Property

Washington Co, ArkansasCounty and State

Natus XX," which bears evidence of his commitment to his studies at old Arkansas College. Another student buried at Evergreen Cemetery is S C. Finley who died in 1878 at age 18. Finley's inscription reads, "In token of their appreciation of his noble character and bearing, his classmates of the sub-Freshman class of the A. I. U. have erected this monument."

The grave markers at Evergreen Cemetery represent most of the wars America has been involved in, with war heroes such as Alexander Spotswood Vandeventer whose monument reads, "Alexander Spotswood Vandeventer - Born Near Jonesboro in Lee County, Virginia, Colonel, 50th Virginia Regiment, Confederate Army. At age 22, He was made Brevet Brigadier General during the Battle Of Chancellorville and was cited by Robert E. Lee for Extraordinary Valor." Other Civil War soldiers buried at Evergreen Cemetery include Major T. J. Hunt, a federal officer of the war, and Lieutenant George S. Albright who fought the Union soldiers at Fayetteville. Colonel Elias Chandler, who led the First Arkansas Regiment in the Spanish-American War is buried in the northeast burial section, and Charles and Jack Tidball, brothers who gave their lives in the last days of World War I, are buried in the same area.

Evergreen Cemetery includes the graves of several notable congressmen: Thomas Montague Gunter who served from 1872 to 1882, Hugh A. Dinsmore who was a congressman for ten years and minister to Korea under President Cleveland, and John N. Tillman who served fourteen years as a congressman and was a President of the University of Arkansas. The most renowned United States Senator from Arkansas is undoubtedly J. William Fulbright (b.1905-d. 1995). The Fulbright plot is located at the northern end of the cemetery, and is relatively hidden at the western corner. J. William Fulbright, United States Senator and inspirational force behind the creation of the United Nations and the Fulbright Student Exchange Program, lies near his mother Roberta Fulbright a strong woman who challenged the governor and the political establishment of Arkansas to see her son elected to the U.S. Senate. J. William Fulbright's first wife, Elizabeth W. (b. 1906-d. 1985) lies next to him.

The medical profession is represented at Evergreen Cemetery by the following significant local doctors: W. B. Welch, T. J. Pollard, H. D. Wood, and W. N. Adeste. Citizens buried at the cemetery who helped establish the banking services in Fayetteville include William McIlloy (b. 1866-d. 1894) and Stephen K. Stone. Prominent builders buried at the site are W. Zera Mayes and Albert M. Byrnes. Peter VanWinkle (b. 1814-d. 1882), the first lumber king of northwest Arkansas, is buried here also. Internationally known modern architect Edward Durrell Stone, an Arkansas native, is also buried here. W. S. Campbell (b.1873-d.1960), author of *One Hundred Years of Fayetteville: 1828-1928*, is also buried at Evergreen.

The Evergreen Cemetery Association was formed in 1915, and has a record of the burials since that date. Records of interments before 1915 were kept by

the sexton or the two controlling fraternal organizations. Evergreen Cemetery is rarely used for interments today.

Though Evergreen Cemetery served as the final resting place for many of Fayetteville's and northwest Arkansas's most prominent citizens, it is for its associations with the broadest aspects of this city's rich history that it is most significant. Buried here are the early settlers, soldiers, statesmen, jurists, doctors, educators and bankers of early Fayetteville. Of all of the known buildings and sites in the Fayetteville area, it is the Evergreen Cemetery that is arguably the single site that is most closely associated with all of these aspects of Fayetteville's history.

=====

9. Major Bibliographical References

=====

History of Washington County, Arkansas. Springdale: Shiloh Museum, 1989.

Hughes, William W. *Archibald Yell.* Fayetteville: University of Arkansas Press, 1988.

Hughes, William W, "Evergreen Cemetery," *Flashback*, 33, no. 4, pp.1-6.

Lemke, W. J. "Burial Grounds in Fayetteville." Document in the collection of the Washington County Historical Society, Fayetteville. December, 1955.

Lemke, W. J. "The Beginnings of Evergreen." Document in the collection of the Washington County Historical Society, Fayetteville.

The Goodspeed Biographical and Historical Memoirs of Northwestern Arkansas. Chicago: The Goodspeed Publishing Co., 1889. Reprinted in Easley, South Carolina: Southern Historical Press, 1978.

Previous documentation on file (NPS):

- _ preliminary determination of individual listing (36 CFR 67) has been requested.
- _ previously listed in the National Register
- _ previously determined eligible by the National Register
- _ designated a National Historic Landmark
- _ recorded by Historic American Buildings Survey # _____
- _ recorded by Historic American Engineering Record # _____

Evergreen Cemetery
Name of Property

Washington Co., Arkansas
County and State

Primary Location of Additional Data:

X State historic preservation office

— Other state agency

— Federal agency

— Local government

— University

— Other -- Specify Repository: _____

=====
10. Geographical Data
=====

Acreage of Property: approximately 4.5

UTM References: Zone Easting Northing Zone Easting Northing

A 15 394620 3991620 B 15 394800 3991340

C 15 394800 3991620 D 15 394610 3991360

Verbal Boundary Description:

The boundary of Evergreen Cemetery is indicated on the USGS Fayetteville Quadrangle 7.5 minute map.

Boundary Justification:

This boundary includes all of the property historically associated with this cemetery.

=====
11. Form Prepared By
=====

Name/Title: Helen A. Barry, Special Projects Historian

Organization: Arkansas Historic Preservation Program Date: 7-17-97

Street & Number: 1500 Tower Bldg., 323 Center St. Telephone: (501) 324-9880

City or Town: Little Rock State: AR ZIP: 72201

UNITED STATES DEPARTMENT OF THE INTERIOR
NATIONAL PARK SERVICE

NATIONAL REGISTER OF HISTORIC PLACES
EVALUATION/RETURN SHEET

REQUESTED ACTION: NOMINATION

PROPERTY Evergreen Cemetery
NAME:

MULTIPLE
NAME:

STATE & COUNTY: ARKANSAS, Washington

DATE RECEIVED: 10/03/97 DATE OF PENDING LIST: 10/14/97
DATE OF 16TH DAY: 10/30/97 DATE OF 45TH DAY: 11/17/97
DATE OF WEEKLY LIST:

REFERENCE NUMBER: 97001279

NOMINATOR: STATE

REASONS FOR REVIEW:

APPEAL: N DATA PROBLEM: N LANDSCAPE: N LESS THAN 50 YEARS: N
OTHER: N PDIL: N PERIOD: N PROGRAM UNAPPROVED: N
REQUEST: N SAMPLE: N SLR DRAFT: N NATIONAL: N

COMMENT WAIVER: N

☒ ACCEPT ☐ RETURN ☐ REJECT 10/30/97 DATE

ABSTRACT/SUMMARY COMMENTS:

Entered in the
National Register

RECOM./CRITERIA _____

REVIEWER _____ DISCIPLINE _____

TELEPHONE _____ DATE _____

DOCUMENTATION see attached comments Y/N see attached SLR Y/N



EVERGREEN CEMETERY

CORNER OF UNIVERSITY AND WILLIAM STREETS

FAYETTEVILLE

WASHINGTON CO., ARKANSAS

PHOTOGRAPHED BY: HELEN BARRY

DATE OF PHOTOGRAPH: 3-22-96

NEGATIVE LOCATED AT: AHPP

VIEW OF THE ^{NORTH} EAST SECTION OF CEMETERY. VIEW FROM THE
WEST.



EVERGREEN CEMETERY

CORNER OF UNIVERSITY AND WILLIAM STREETS
FAYETTEVILLE

WASHINGTON CO., ARKANSAS

PHOTOGRAPHED BY: HELEN BARRY

DATE OF PHOTO: 3-22-96

NEGATIVE LOCATED AT: AHPP

VIEW OF ^{NORTH} EASTERN SECTION OF CEMETERY FROM WEST

ARCHIBALD YELL

Born in North Carolina Aug.
1797. A Volunteer in the
battle of New Orleans.
District Judge, Ark.
Territory, 1832. First mem-
ber of Congress from the
State. Governor 1840. Elec-
ted to Congress again
41. Resigned and accept-
ed of Secretary of Arkansas.
1846

Killed at Buena Vista Feb.
22. 1862. A gallant soldier
an upright judge a firm
less champion of popular
rights a sincere friend
of his country

EVERGREEN CEMETERY

CORNER OF UNIVERSITY AND WILLIAM STREETS.

FAYETTEVILLE

WASHINGTON CO., ARKANSAS

PHOTOGRAPHED BY: HELEN BARRY

DATE OF PHOTOGRAPH: 3-22-96

NEGATIVE LOCATED AT: AHPP

VIEW FROM THE EAST SHOWING THE INSCRIPTION ON THE
ARCHIBALD YELL STONE. THE YELL PLOT IS LOCATED
IN THE CENTRAL SECTION OF THE CEMETERY



EVERGREEN CEMETERY

CORNER OF UNIVERSITY AND WILLIAM STS.

FAYETTEVILLE

WASHINGTON CO, ARKANSAS

PHOTOGRAPHED BY: HELEN BARRY

DATE OF PHOTOGRAPH: 3-22-96

NEGATIVE LOCATED AT: AHPP

VIEW FROM THE EAST WITH YELL PLOT IN FOREGROUND.
THE YELL PLOT IS LOCATED IN THE CENTER SECTION
OF THE CEMETERY



EVERGREEN CEMETERY

CORNER OF UNIVERSITY AND WILLIAM STREETS

FAYETTEVILLE

WASHINGTON CO., ARKANSAS

PHOTOGRAPHED BY: HELEN BARRY

DATE OF PHOTOGRAPH: 3-22-96

NEGATIVE LOCATED AT: AHPP

VIEW FROM THE SOUTHEAST SHOWING THE SOUTHERN END OF
THE CENTRAL BURIAL AREA.

FULBRIGHT

J. WILLIAM
1905 - 1995

ELIZABETH W.
1906 - 1985

EVERGREEN CEMETERY

CORNER OF UNIVERSITY AND WILLIAM STREETS

FAYETTEVILLE

WASHINGTON CO., ARKANSAS

PHOTOGRAPHED BY: HELEN BARRY

DATE OF PHOTOGRAPH: 3-22-96

NEGATIVE LOCATED AT: AHPP

VIEW OF THE FULBRIGHT STONE WHICH IS LOCATED

~~DD~~ IN THE NORTHEAST SECTION OF THE

CEMETERY. VIEW FROM ABOVE.



L. GREGG
WAS COL. 4TH REGT. ARK. INF. 1ST CALV. TROPS.
WAR OF 1861 AND A JUDGE OF THE STATE
CHANCERY COURT AND STATE SUPREME
COURT.

EVERGREEN CEMETERY

CORNER OF UNIVERSITY AND WILLIAM STS.

FAYETTEVILLE

WASHINGTON CO., ARKANSAS

PHOTOGRAPHED BY: HELEN BARRY

DATE OF PHOTOGRAPH: 3-22-96

NEGATIVE LOCATED AT: AHPP

VIEW OF THE GREGG MONUMENT LOCATED IN THE
CENTRAL (NORTHERN) SECTION OF THE CEMETERY.
VIEW FROM THE WEST.



EVERGREEN CEMETERY
CORNER OF UNIVERSITY AND WILLIAM STREETS
FAYETTEVILLE

WASHINGTON CO., ARKANSAS

PHOTOGRAPHED BY: HELEN BARRY

DATE OF PHOTOGRAPH: 3-22-96

NEGATIVE LOCATED AT: AHPP

VIEW OF THE LEMKE MARKER LOCATED IN THE NORTH WEST
SECTION OF THE CEMETERY. VIEW FROM THE EAST.



EVERGREEN CEMETERY

CORNER OF UNIVERSITY AND WILLIAM STREETS

FAYETTEVILLE

WASHINGTON COUNTY, ARKANSAS

PHOTOGRAPHED BY: HELEN BARRY

DATE OF PHOTO: 3-22-96

NEGATIVE LOCATED AT: AHPP

VIEW OF THE PETTIGREW STONE LOCATED IN THE NORTHEAST
SECTION OF THE CEMETERY. VIEW FROM THE WEST.



EVERGREEN CEMETERY
CORNER OF UNIVERSITY AND WILLIAM STS.
FAYETTEVILLE

WASHINGTON CO., ARKANSAS

PHOTOGRAPHED BY: HELEN BARRY

DATE OF PHOTO: 3-22-96

NEGATIVE LOCATED AT: AHPP

VIEW OF THE EVINS MARKER LOCATED IN THE NORTHEAST
CORNER OF THE CEMETERY. VIEW FROM THE WEST.



VANDEVENTER

ALEXANDER SPOTSWOOD VANDEVENTER,
BORN NEAR JONESVILLE, LEE COUNTY, VIRGINIA.
COLONEL 50th VIRGINIA REGIMENT, CONFEDERATE
ARMY. AT THE AGE OF 22 HE WAS MADE BREVET
BRIGADIER-GENERAL DURING THE BATTLE OF
CHANCELLORSVILLE AND WAS CITED BY GENERAL
ROBERT E. LEE FOR EXTRAORDINARY VALOR.

MOTHER
MOLLIE PATTON
WIFE OF COL. A. S. VANDEVENTER
1841 - 1900

EVERGREEN CEMETERY
CORNER OF UNIVERSITY AND WILLIAM STS.
FAYETTEVILLE

WASHINGTON CO., ARKANSAS

PHOTOGRAPHED BY: HELEN BARRY

DATE OF PHOTO: 3-22-96

NEG. LOCATED AT: AHPP

VIEWS OF THE VANDEVENTER PLOT AT THE NORTHEAST
EDGE OF THE CEMETERY. VIEW FROM THE
WEST.



EVERGREEN CEMETERY
CORNER OF UNIVERSITY AND WILLIAM STS
FAYETTEVILLE

WASHINGTON CO., ARKANSAS

PHOTOGRAPHED BY: HELEN BARRY

DATE OF PHOTO: 3-22-96

NEGATIVE LOCATED AT: AHPP

VIEW OF THE ROLLSTON PLOT AT THE SOUTHEAST
SECTION OF THE CEMETERY (BLOCK 1). VIEW FROM
THE WEST.



EVERGREEN CEMETERY

CORNER OF UNIVERSITY AND WILLIAM STREETS

FAYETTEVILLE

WASHINGTON CO., ARKANSAS

PHOTOGRAPHED BY: HELEN BARRY

DATE OF PHOTOGRAPH: 3-22-96

NEGATIVE LOCATED AT: AHPP

VIIW OF VAN WINKLE PLOT AT CENTER, NORTHERN
SECTION OF CEMETERY. VIEW FROM THE WEST



EVERGREEN CEMETERY
CORNER OF UNIVERSITY AND WILLIAM STREETS
FAYETTEVILLE
WASHINGTON CO., ARKANSAS
PHOTOGRAPHED BY: HELEN BARRY
DATE OF PHOTOGRAPH: 3-22-96
NEGATIVE LOCATED AT: AHPB
VIEW OF NORTHEAST SECTION OF CEMETERY FROM WEST



EVERGREEN CEMETERY
CORNER OF UNIVERSITY AND WILLIAM STREETS
FAYETTEVILLE

WASHINGTON CO, ARKANSAS

PHOTOGRAPHED BY: HELEN BARREY

DATE OF PHOTOGRAPH: 3-22-96

NEGATIVE LOCATED AT: AHPP

VIEW OF CENTER (NORTHERN) SECTION OF CEMETERY
FROM NORTH



EVERGREEN CEMETERY

CORNER OF UNIVERSITY AND WILLIAM STREETS
FAYETTEVILLE

WASHINGTON CO., ARKANSAS

PHOTOGRAPHED BY: HELEN BARRY

DATE OF PHOTOGRAPH: 3-22-96

NEGATIVE LOCATED AT: AHPP

VIEW OF CENTER (NORTHERN) SECTION OF CEMETERY FROM WEST



EVERGREEN CEMETERY

CORNER OF UNIVERSITY AND WILLIAM STREETS

FAYETTEVILLE

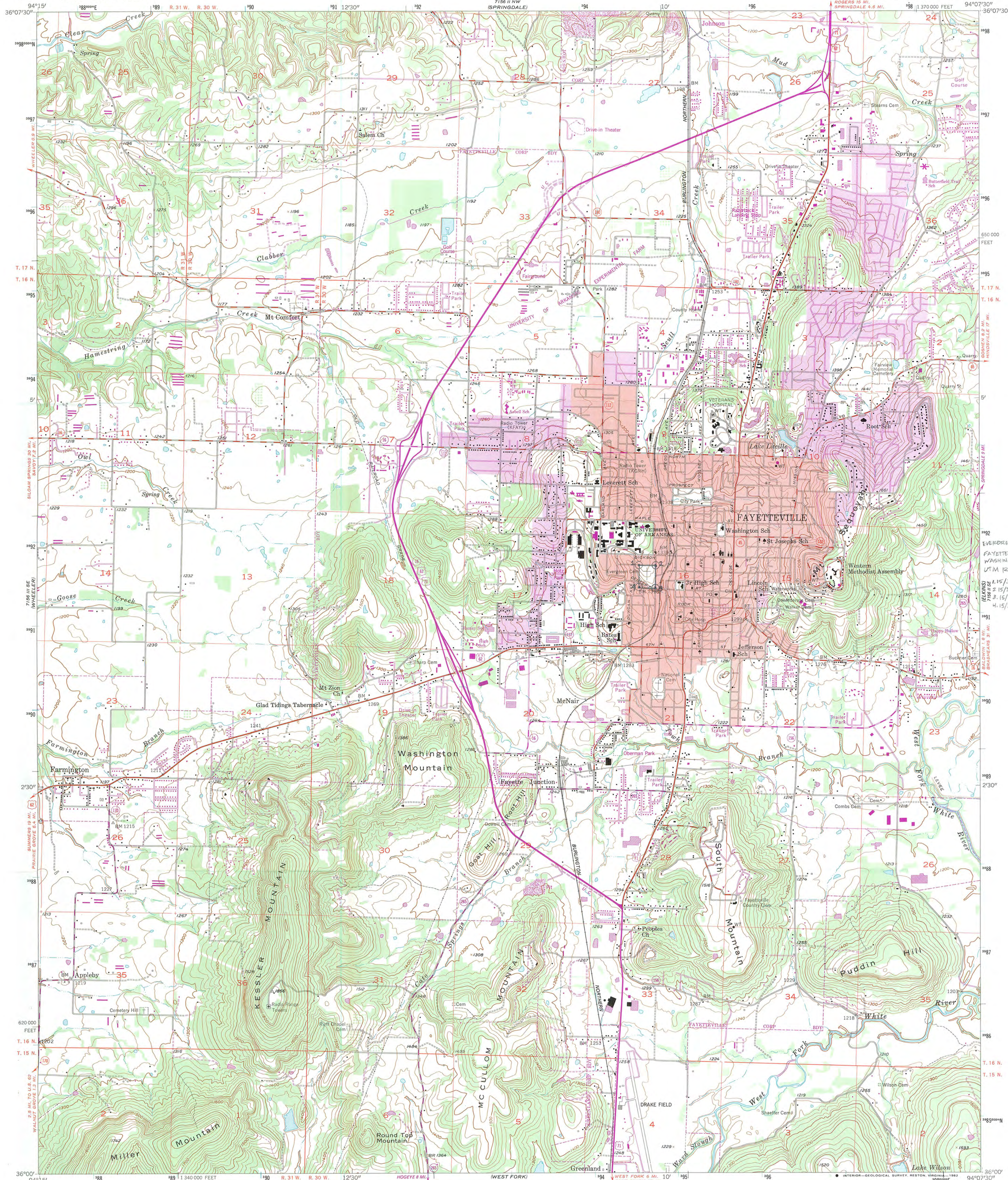
WASHINGTON COUNTY, ARKANSAS

PHOTOGRAPHED BY: HELEN BARRY

DATE OF PHOTOGRAPH: 3-22-96

NEGATIVE LOCATED AT: AHPP

VIEW OF CENTER SECTION OF CEMETERY FROM WEST



Mapped, edited, and published by the Geological Survey
Control by USGS and USC&GS

Topography from aerial photographs by Kelsh plotter
Aerial photographs taken 1957. Field check 1958

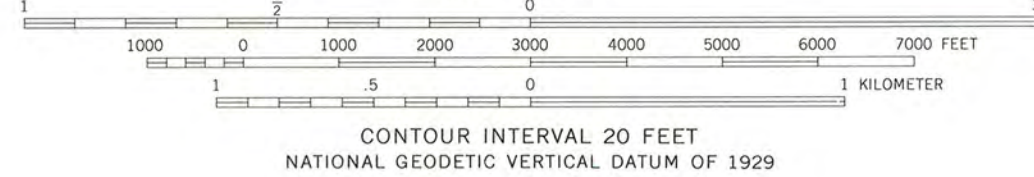
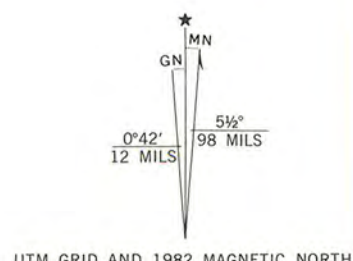
Polyconic projection. 1927 North American datum
10,000-foot grid based on Arkansas coordinate system, north zone
1000-meter Universal Transverse Mercator grid ticks,
zone 15, shown in blue

Red tint indicates area in which only
landmark buildings are shown

To place on the predicted North American Datum 1983
move the projection lines 5 meters south and
17 meters east as shown by dashed corner ticks

Revisions shown in purple compiled from aerial photographs taken 1980
and other sources. This information not field checked. Map edited 1982

Purple tint indicates extension of urban area



ROAD CLASSIFICATION	
Primary highway, hard surface	Light-duty road, hard or improved surface
Secondary highway, hard surface	Unimproved road
Interstate Route	U. S. Route
	State Route

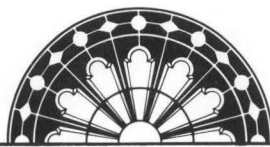
FAYETTEVILLE, ARK.

N 3600—W 9407.5/7.5

1958

PHOTOREVISED 1982

DMA 1156 II SW—SERIES 9884



ARKANSAS
HISTORIC
PRESERVATION
PROGRAM

September 19, 1997

Carol D. Shull
Chief of Registration
United State Department of the Interior
National Register of Historic Places
National Park Service
800 North Capitol Street, Suite 250
Washington, D.C. 20002

RE: Evergreen Cemetery
Fayetteville, Washington County

Dear Carol:

We are enclosing for your review the nomination of the above referenced property. The Arkansas Historic Preservation Program has complied with all applicable nominating procedures and notification requirements in the nomination process.

Thank you for your consideration in this matter.

Sincerely,

Cathy Buford Slater
State Historic Preservation Officer

CBS:rm

Enclosures

