



1. Fay, Pliny and Adelia, house
2. Muscatine County, Iowa
3. Jan Olive Nash
4. May 1997
5. Photographer
6. Northeast front and Northwest Side,
facing South
7. Photo # 1



1. Fay, Pliny and Adelia, house
2. Muscatine County, Iowa
3. Jan Olive Nash
4. May 1997
5. Photographer
6. Northeast front and Northwest Side
facing South
7. Photo # 2



1. Fay, Pliny and Adelia, house
2. Muscatine County, Iowa
3. Jan Olive Nash
4. May 1997
5. Photographer
6. Northeast front, facing Southwest
7. Photo # 3



1. Fay, Pliny and Adelia, house
2. Muscatine County, Iowa
3. Jan Olive Nash
4. May 1997
5. Photographer
6. Southeast Side and Southwest
rear, facing north
7. Photo # 4



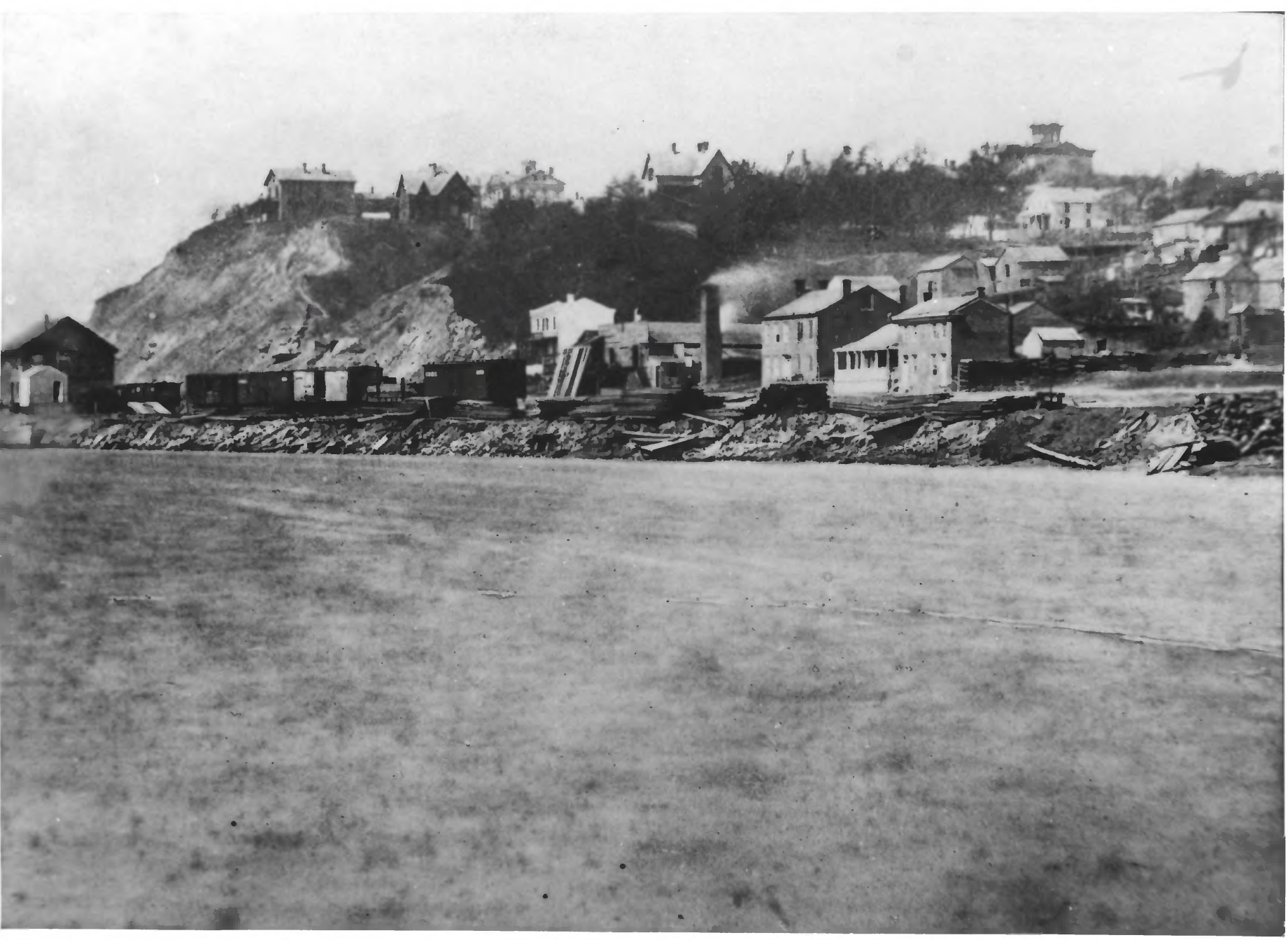
1. Fay, Pliny and Adelia, house
2. Muscatine County, Iowa
3. Jan Olive Nash
4. May 1997
5. Photographer
6. Detail front entrance,
facing Southwest
7. Photo #5



1. Fay, Pliny and Adelia, house
2. Muscatine County, Iowa
3. Jan Olive Nash
4. May 1997
5. Photographer
6. Interior First floor Central hall
facing Southwest
7. Photo #7



1. Fay, Pliny and Adelia, house
2. Muscatine County, Iowa
3. Jan Olive Nash
4. May 1997
5. Photographer
6. Interior, first floor Northwest front Parlor, facing east.
7. Photo # 7



1. "View of West Front Street, Muscatine, Iowa, 1866" with Pliny Fay House in upper left-hand corner.
2. Muscatine County, Iowa
3. Photographer unknown
4. 1866
5. From the Graham Collection, Bamford Studio, Muscatine, Iowa.
6. Town of Muscatine from the Mississippi River, looking west.
7. Photograph #8