

164

United States Department of the Interior National Park Service

FEB 06 1989

National Register of Historic Places Registration Form

NATIONAL REGISTER

This form is for use in nominating or requesting determinations of eligibility for individual properties or districts. See instructions in Guidelines for Completing National Register Forms (National Register Bulletin 16). Complete each item by marking "x" in the appropriate box or by entering the requested information. If an item does not apply to the property being documented, enter "N/A" for "not applicable." For functions, styles, materials, and areas of significance, enter only the categories and subcategories listed in the instructions. For additional space use continuation sheets (Form 10-900a). Type all entries.

1. Name of Property

historic name Oates House
other names/site number Shoemaker House

2. Location

street & number 402 Kirkland Street
city, town Abbeville
state Alabama code AL county Henry code 067 zip code 36310

3. Classification

Ownership of Property: private (checked), public-local, public-State, public-Federal
Category of Property: building(s) (checked), district, site, structure, object
Number of Resources within Property: Contributing 1, Noncontributing 0, Total 1

Name of related multiple property listing: NA

Number of contributing resources previously listed in the National Register 0

4. State/Federal Agency Certification

As the designated authority under the National Historic Preservation Act of 1966, as amended, I hereby certify that this nomination request for determination of eligibility meets the documentation standards for registering properties in the National Register of Historic Places and meets the procedural and professional requirements set forth in 36 CFR Part 60. In my opinion, the property meets does not meet the National Register criteria. See continuation sheet.
Signature of certifying official: Alabama Historical Commission (State Historic Preservation Office)
Date: 1-30-89

In my opinion, the property meets does not meet the National Register criteria. See continuation sheet.
Signature of commenting or other official
Date
State or Federal agency and bureau

5. National Park Service Certification

I, hereby, certify that this property is:
entered in the National Register. (checked)
determined eligible for the National Register.
determined not eligible for the National Register.
removed from the National Register.
other, (explain:)

Signature of the Keeper

Date of Action

6. Function or Use

Historic Functions (enter categories from instructions)

Domestic/Single Dwelling

Current Functions (enter categories from instructions)

Vacant/not in use**7. Description**

Architectural Classification

(enter categories from instructions)

Classical Revival

Materials (enter categories from instructions)

foundation stonewalls weather boardroof asphaltother portico; wood

Describe present and historic physical appearance.

The Oates House is a single-family, detached residence constructed in the early twentieth century in the Classical Revival style. The wood frame clapboard house is two stories in height, generally square in shape with a one-story rear addition and topped with a hipped roof. The house is dominated by a massive full-height pedimented porch supported by four Tuscan columns. The main elevation has five bays with the entrance centrally located. There is a second floor balcony over the entrance. The south side elevation has a two-story sleeping porch projection and a one-story porte cochere on the north side elevation.

* * * * * * *

The main mass of the Oates House measures approximately 30 feet square and rests on a stone foundation. There are two massive interior chimneys. The hipped roof is covered with asphalt shingles.

The main (east) elevation is symmetrically divided into five bays. The centrally located main entrance is a single paneled door surrounded by slender side lights and transom. The entrance is flanked by floor-to-ceiling multi-paned casement windows. The end windows are 2 over 2 double-hung sash windows. The second story features four 2 over 2 double-hung sash windows. There is a centrally located door opening up onto a wooden balcony with turned posts and supported by brackets.

The full-length portico on the main elevation features four columns in the Tuscan order supporting a plain frieze and pedimented gable. On the north side elevation there is a one-story porte cochere supported by two Tuscan columns on square piers. There is a second-story balcony above the porte cochere with square balustrade. On the south side elevation there is a two-story sleeping porch projection with a shed roof. There is a one-story, hipped roof kitchen addition on the rear. A one-story screen porch stretches along the entire west side of the house.

The interior plan features a central hall with two rooms to each side. At the end of the hall is an open string stairway leading upstairs to an identical center hall plan. The interior details include narrow pine flooring, ten inch high baseboards, and plaster walls. Seven of the eight fireplace mantels are original; two feature over-mantel mirrors. Many of the c. 1912 light fixtures and sconces are still present.

8. Statement of Significance

Certifying official has considered the significance of this property in relation to other properties:

nationally statewide locally

Applicable National Register Criteria A B C D

Criteria Considerations (Exceptions) A B C D E F G

Areas of Significance (enter categories from instructions)
Architecture

Period of Significance
1900-1927

Significant Dates
1900, 1910, 1927

Cultural Affiliation
NA

Significant Person
NA

Architect/Builder
Unknown

State significance of property, and justify criteria, criteria considerations, and areas and periods of significance noted above.

Criterion C: Architecture

The Oates House is locally significant as the only domestic example of the Classical Revival style in Abbeville, the county seat of Henry County. The house was originally built in 1900 as a one-story residence for the county's largest farmer. As the planter prospered, the house was extensively remodeled in 1910 in the popular Classical Revival style. The most prevalent characteristic of the style includes the massive full-height pedimented portico supported by Tuscan columns, the symmetrical facade, second-story balcony and hipped roof.

9. Major Bibliographical References

See continuation sheet.

See continuation sheet

Previous documentation on file (NPS):

- preliminary determination of individual listing (36 CFR 67) has been requested
- previously listed in the National Register
- previously determined eligible by the National Register
- designated a National Historic Landmark
- recorded by Historic American Buildings Survey # _____
- recorded by Historic American Engineering Record # _____

Primary location of additional data:

- State historic preservation office
- Other State agency
- Federal agency
- Local government
- University
- Other

Specify repository: _____

10. Geographical Data

Acreeage of property 0.20 acres \pm

UTM References

A

1	6
---	---

6	6	6	0	2	0
---	---	---	---	---	---

3	4	9	3	5	7	0
---	---	---	---	---	---	---

 Zone Easting Northing

C

--	--

--	--	--	--	--	--

--	--	--	--	--	--	--

B

--	--

--	--	--	--	--	--

--	--	--	--	--	--	--

 Zone Easting Northing

D

--	--

--	--	--	--	--	--

--	--	--	--	--	--	--

See continuation sheet

Verbal Boundary Description

See continuation sheet.

See continuation sheet

Boundary Justification

The boundary includes the entire city lot that has historically been associated with the property.

See continuation sheet

11. Form Prepared By

name/title Steven M. Kay/Cultural Resources Coordinator
 organization Alabama Historical Commission date May 1988
 street & number 725 Monroe Street telephone 205 261-3184
 city or town Montgomery state Alabama zip code 36130

**United States Department of the Interior
National Park Service**

**National Register of Historic Places
Continuation Sheet**

Section number 7 Page 1

The Oates House was built in 1900 as a one-story residence, although no known description exists. In 1910 the house was enlarged by adding a second story and classic portico. In c. 1927 the house underwent another remodeling that included the sleeping porch, porte cochere, the rear kitchen wing, and a new roof. It is speculated that at this time the present first floor windows on the main elevation were added and the interior staircase was relocated.

The Oates House has maintained its integrity in regard to location, design, setting, material, workmanship, feeling, and association. The exterior and interior are virtually unchanged since the c. 1927 alterations. Although vacant the house is in good repair and needs only minimal maintenance.

The Oates House is located on a shallow city lot facing east on Abbeville's main street. There are no outbuildings on the property. There is a stone and iron fence along the east and north edge of the property.

**United States Department of the Interior
National Park Service**

**National Register of Historic Places
Continuation Sheet**

Section number 8 Page 1

HISTORICAL SUMMARY

The Oates House was built in 1900 by Ephraim Oates, one of the most successful farmers in Henry County. Ephraim Oates was born in South Carolina on January 27, 1826. At the age of 13 Ephraim and his 13 brothers and sisters were brought to Henry County, Alabama, by his recently widowed mother, Elizabeth Shipps Oates (1786-1866). In Alabama Elizabeth Oates purchased a farm near Abbeville.

Ephraim Oates successfully managed and worked the farm. In 1855 he started a merchandising business but soon sold his stock and purchased 560 acres of land and continued farming. He steadily increased his land holdings and by 1890 he owned over 5,000 acres. Ephraim Oates became the most successful and largest farmer in Henry County.

At the age of 74 Ephraim Oates built a home in the county seat of Abbeville for his second wife and new family. Ephraim borrowed the capital to purchase the land from his cousin, Governor William C. Oates (1894-1896 term). In 1900 Ephraim built a small one-story house. But in 1910 the house was greatly enlarged and remodeled in the popular Classical Revival style.

One year later Ephraim Oates died at the age of 85. The fashionable home remained in the Oates family for another 16 years.

In 1927 the house was purchased by Herman Timothy Shoemaker (1897-1981) and his wife, Phoebe Carey (1893-1975). Shoemaker was a Ford dealer in Abbeville. Soon after purchasing the home, the Shoemakers added the present windows on the first floor and moved the staircase to the back of the hall. The house remained in the Shoemaker family until it was purchased in the early 1980s by the present owners. The property is being renovated to serve as offices.

United States Department of the Interior
National Park Service

**National Register of Historic Places
Continuation Sheet**

Section number 9 Page 1

BIBLIOGRAPHY

Foy, Emma Shoemaker. 215 West Broad Street, Eufaula. Alabama. Interview, April 1987.

Leonard, Mrs. George. 106 East Clendinen, Abbeville, Alabama. Interview, May 1987.

Pingel, Charlton Oates. 790 Savannah Drive, Enon, Ohio. Interview, May 1987.

Pingel, Charlton Oates. "Genealogical Research," Henry County, Alabama, completed 1987.

The Abbeville (Alabama) News, 22 July, 1910, p. 2.

The Abbeville (Alabama) News, 21 October, 1910, p. 3.

Henry County Census, 1855, 1880.

Alabama Archives and History.

Henry, the Mother County, Hoyt M. Warren, Sr. Auburn, AL, Warren Enterprises, 1976.

History of Henry County, Alabama, Mrs. Marvin Scott, 1961, Frank Parkhurst & Sons Printers, Pensacola, Fla., 1961.

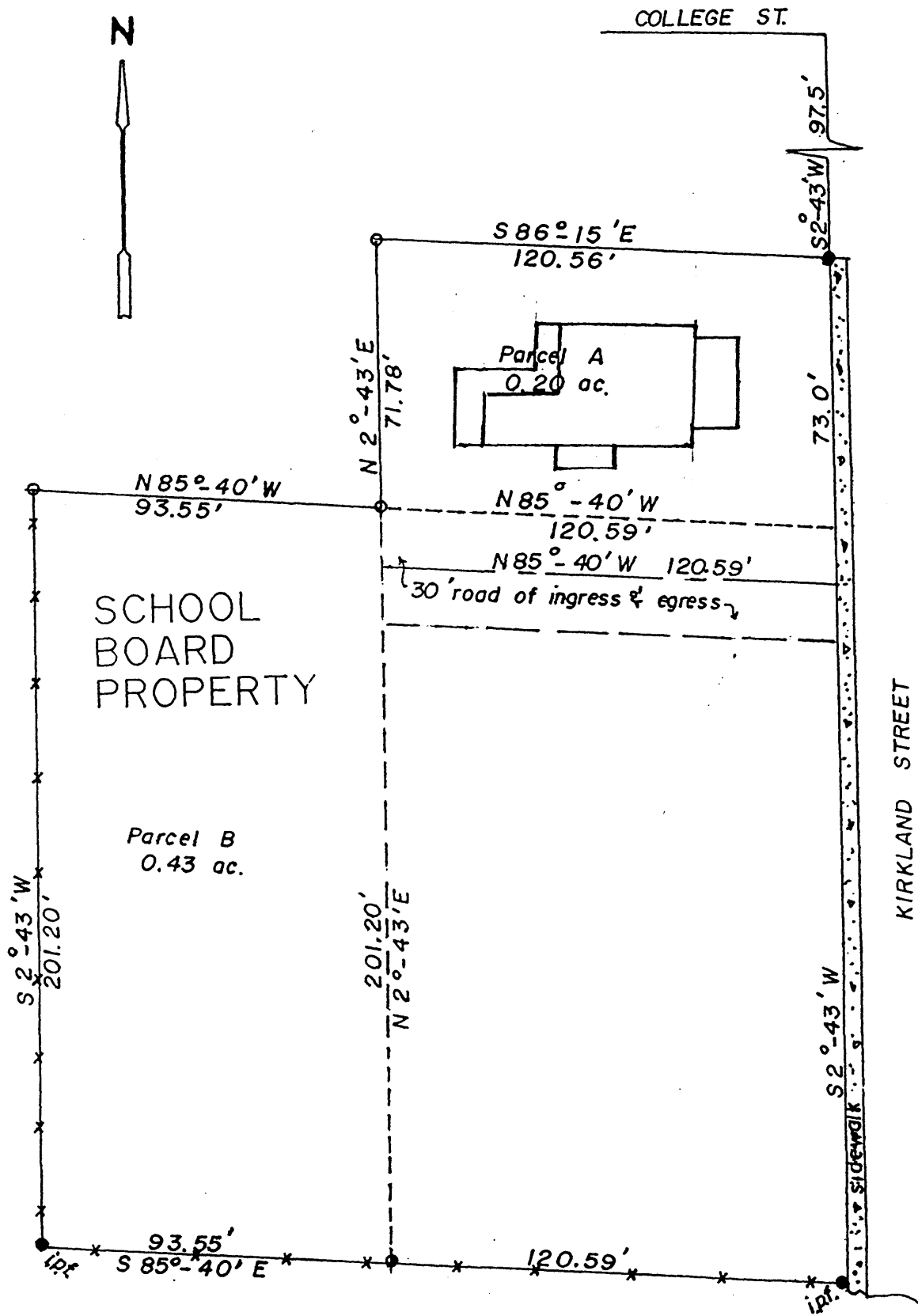
United States Department of the Interior
National Park Service

National Register of Historic Places Continuation Sheet

Section number 10 Page 1

VERBAL BOUNDARY DESCRIPTION

From the intersection of the South right of way of College Street and the West right of way of Kirkland Street in the City of Abbeville, Alabama, run S2 -43' W along said West right of way of Kirkland Street 97.5 feet to the point of beginning; thence continue S2 -43' W along said West right of way 73.0 feet; thence N85 -40' W 120.59 feet; thence N2 -43' E 71.78 feet; thence S86 -15' E 120.56 feet to the point of beginning and containing 0.20 acres more or less. See property outlined in red on boundary map.



**United States Department of the Interior
National Park Service**

**National Register of Historic Places
Continuation Sheet**

photo-
Section number graphs Page 1

Information in Items 1, 2, & 5 is the same for all photographs listed.

- 1) Oates House, 402 Kirkland Street
- 2) Abbeville, Alabama, Henry County
- 5) Alabama Historical Commission

No. 1

- 3) Steven M. Kay
- 4) September 1988
- 6) Main elevation, camera facing west

No. 2

- 3) Steven M. Kay
- 4) September 1988
- 6) detail of main entrance, camera facing west

No. 3

- 3) Steven M. Kay
- 4) September 1988
- 6) detail of balcony, camera facing west

No. 4

- 3) Steven M. Kay
- 4) September 1988
- 6) side elevation, camera facing north

No. 5

- 3) Steven M. Kay
- 4) September 1988
- 6) rear addition, camera facing north

No. 6

- 3) Steven M. Kay
- 4) September 1988
- 6) porte cochere, camera facing west

No. 7

- 3) Eva Hicks
- 4) December 1988
- 6) detail of main entrance, camera facing east

No. 8

- 3) Eva Hicks
- 4) December 1988
- 6) detail of fireplace, camera facing west

No. 9

- 3) Eva Hicks
- 4) December 1988
- 6) detail of fireplace, camera facing west

No. 10

- 3) Eva Hicks
- 4) December 1988
- 6) detail of central hall and staircase, camera facing west

No. 11

- 3) Eva Hicks
- 4) December 1988
- 6) detail of windows, camera facing south