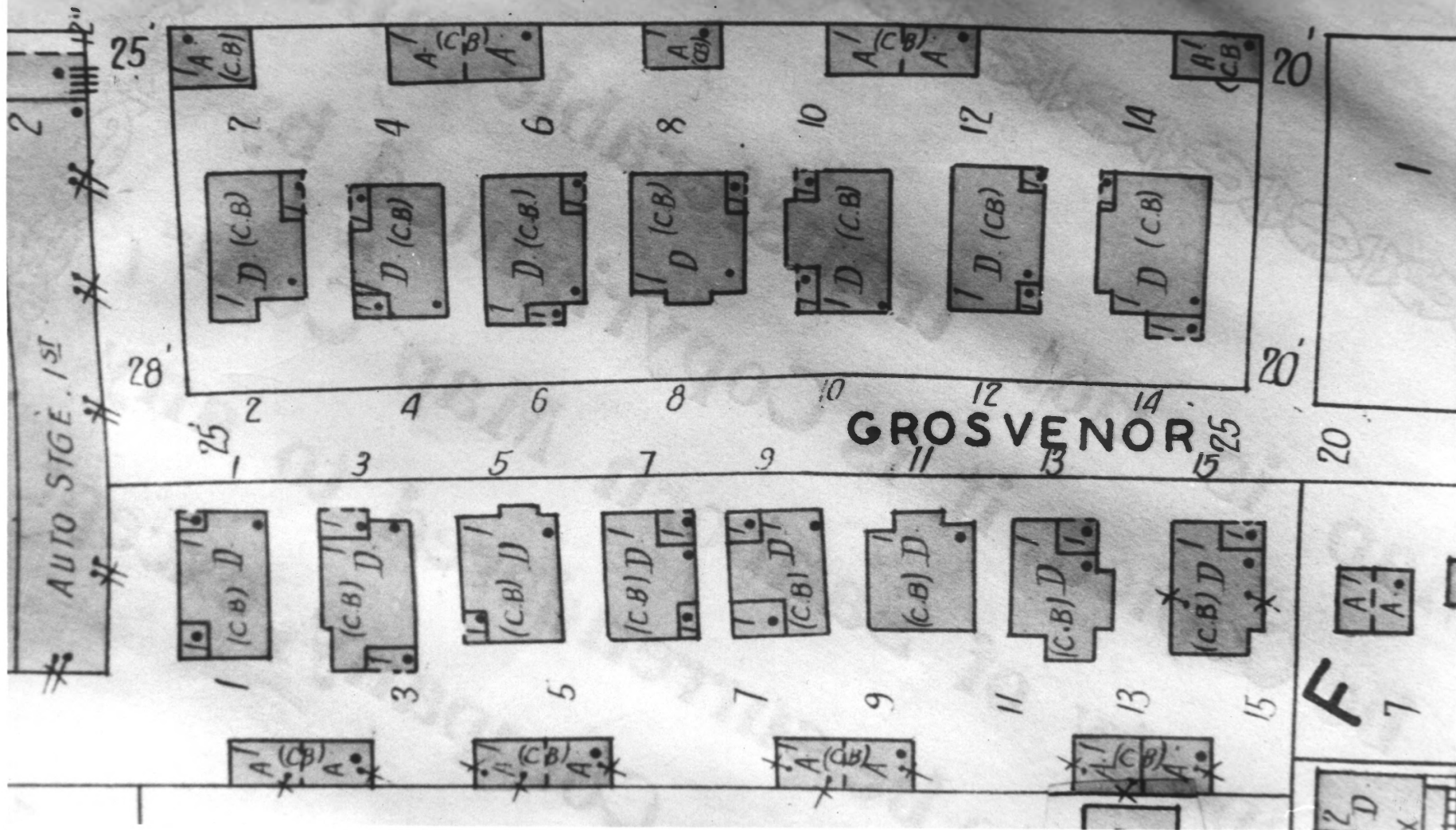


S. PINEAPPLE AV



1. MRNS #2 Burns Court
2. Burns Court , Sarasota
(Sarasota County , Florida)
3. John McCarthy , County Historian
4. May 2 1983
5. Planning Dept. , Sarasota City Hall
6. 1929 Sanborn Insurance Co.
Map pg 12
7. Roll# A : 35



1. MRNS #2 Burns Court
2. Burns Court Historic District
(Sarasota County , Florida)
3. John McCarthy , County Historian
4. May 2 1983
5. Planning Dept. , Sarasota City Hall
6. #L-29 Close-up
7. Roll# A : 15



Burns Court Historic District

1. MRNS #2

2.

(Sarasota County , Florida)

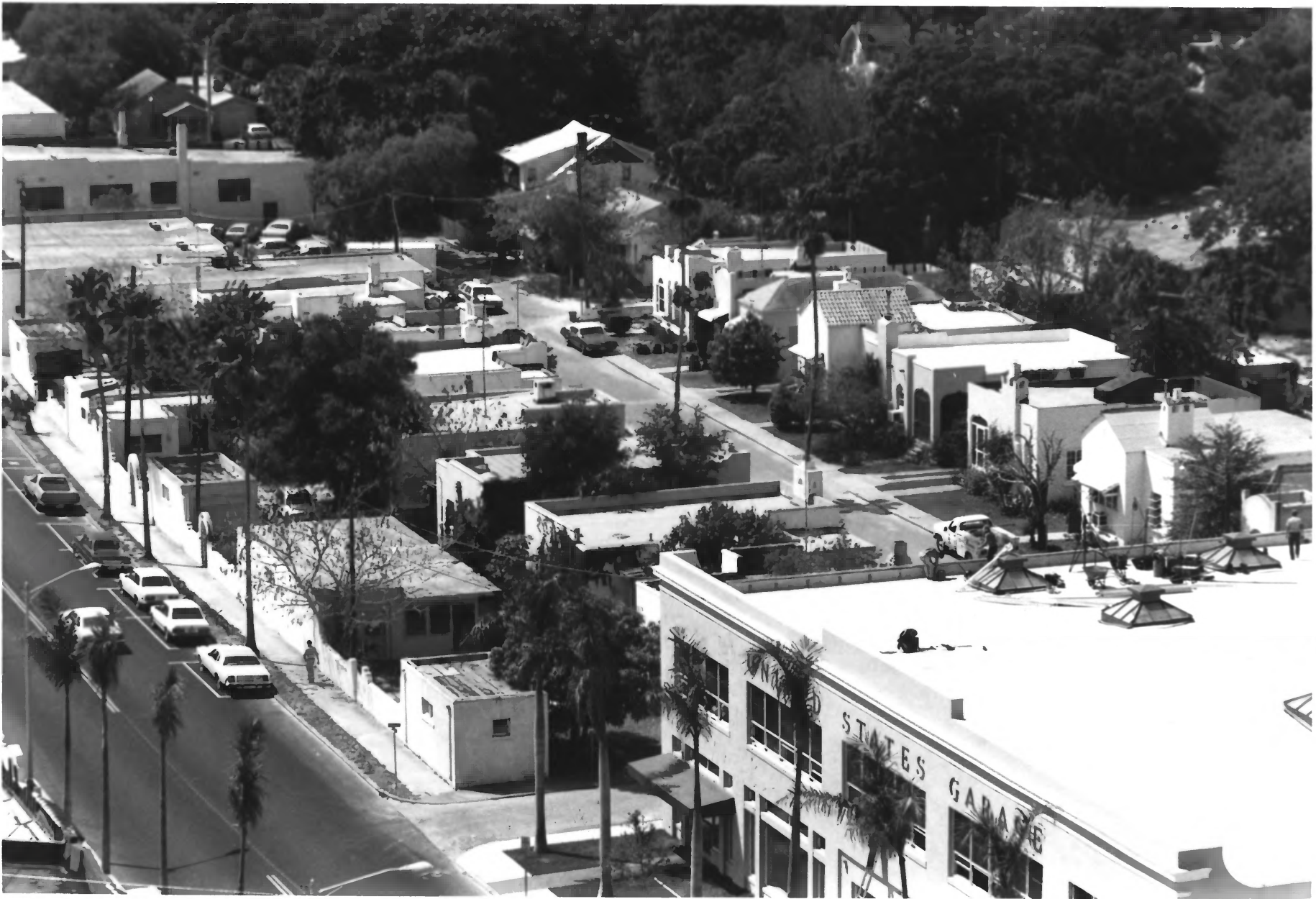
3. John McCarthy , County Historian

4. April 28 1983

5. Planning Dept., Sarasota City Hall

6. Aerial , Burns Court even numbers

7. Roll# 9 : 32



Burns Court Historic District

1. MRNS #2

2.

(Sarasota County , Florida)

3. John McCarthy , County Historian

4. April 28 1983

5. Planning Dept. , Sarasota City Hall

6. Aerial overall , toward S/SW

7. Roll# 9 : 28



1. MRNS #2(b) Burns Court
2. 401 Burns Court , Sarasota
(Sarasota County , Florida)
3. John McCarthy , County Historian
4. April 28 1983
5. Planning Dept. , Sarasota City Hall
6. West Elevation
7. Roll# 10 : 36A



Burns Court Historic District

1. MRNS #2(c)
2. 410 Burns Court , Sarasota
(Sarasota County , Florida)
3. John McCarthy , County Historian
4. April 28 1983
5. Planning Dept. , Sarasota City Hall
6. East Elevation
7. Roll# 9 : 3



Burns Court Historic District

1. MRNS #2(d)
2. 411 Burns Court , Sarasota
(Sarasota County , Florida)
3. John McCarthy , County Historian
4. April 28 1983
5. Planning Dept. , Sarasota City Hall
6. West Elevation
7. Roll# 11 : 1



NO
PARKING
ANY
TIME
↔

000

Burns Court Historic District

1. MRNS #2(e)
2. 416 Burns Court , Sarasota
(Sarasota County , Florida)
3. John McCarthy , County Historian
4. April 28 1983
5. Planning Dept. , Sarasota City Hall
6. East Elevation
7. Roll# 9 : 5



Burns Court Historic District

1. MRNS #2(f)
2. 417 Burns Court , Sarasota
(Sarasota County , Florida)
3. John McCarthy , County Historian
4. April 28 1983
5. Planning Dept. , Sarasota City Hall
6. West Elevation
7. Roll# 11 : 2



Burns Court Historic District

1. MRNS #2(g)
2. 422 Burns Court , Sarasota
(Sarasota County , Florida)
3. John McCarthy , County Historian
4. April 28 1983
5. Planning Dept. , Sarasota City Hall
6. East Elevation
7. Roll# 9 : 7



Burns Court Historic District

1. MRNS #2(h)
2. 423 Burns Court , Sarasota
(Sarasota County , Florida)
3. John McCarthy , County Historian
4. April 28 1983
5. Planning Dept. , Sarasota City Hal
6. West Elevation
7. Roll# 11 : 5



Burns Court Historic District

1. MRNS #2(i)
2. 430 Burns Court , Sarasota
(Sarasota County , Florida)
3. John McCarthy , County Historian
4. April 28 1983
5. Planning Dept. , Sarasota City Hall
6. East Elevation
7. Roll# 9 : 10



Burns Court Historic District

1. MRNS #2(k)
2. 436 Burns Court , Sarasota
(Sarasota County , Florida)
3. John McCarthy , County Historian
4. April 28 1983
5. Planning Dept. , Sarasota City Hall
6. East Elevation
7. Roll # 9 : 12



Burns Court Historic District

1. MRNS #2(j)
2. 431 Burns Court , Sarasota
(Sarasota County , Florida)
3. John McCarthy , County Historian
4. April 28 1983
5. Planning Dept. , Sarasota City Hall
6. Northwest
7. Roll# 11 : 6



Burns Court Historic District

1. MRNS #2 (1)
2. 431 Burns Court, Sarasota
(Sarasota County, Florida)
3. John McCarthy, County Historian
4. April 28, 1983
5. Planning Dept., Sarasota City Hall
6. West Elevation
7. Roll# 11 : 8



Burns Court Historic District

1. MRNS #2(m)
2. 442 Burns Court , Sarasota
(Sarasota County , Florida)
3. John McCarthy , County Historian
4. April 28 1983
5. Planning Dept. , Sarasota City Hall
6. East Elevation
7. Roll# 9 : 15



Burns Court Historic District

1. MRNS #2(n)
2. 443 Burns Court , Sarasota
(Sarasota County , Florida)
3. John McCarthy , County Historian
4. April 28 1983
5. Planning Dept. , Sarasota City Hall
6. West Elevation
7. Roll# 11 : 10

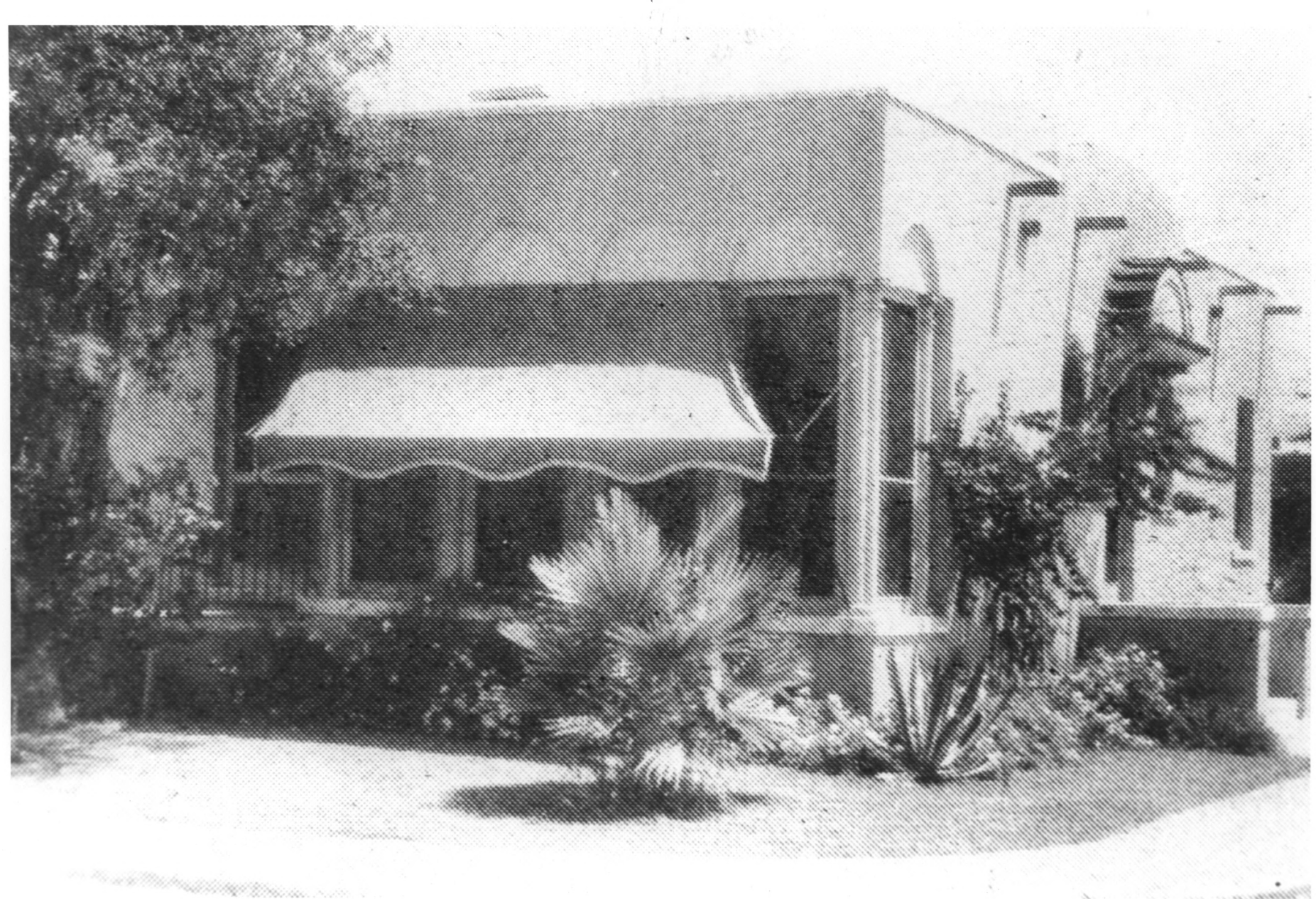


Burns Court Historic District

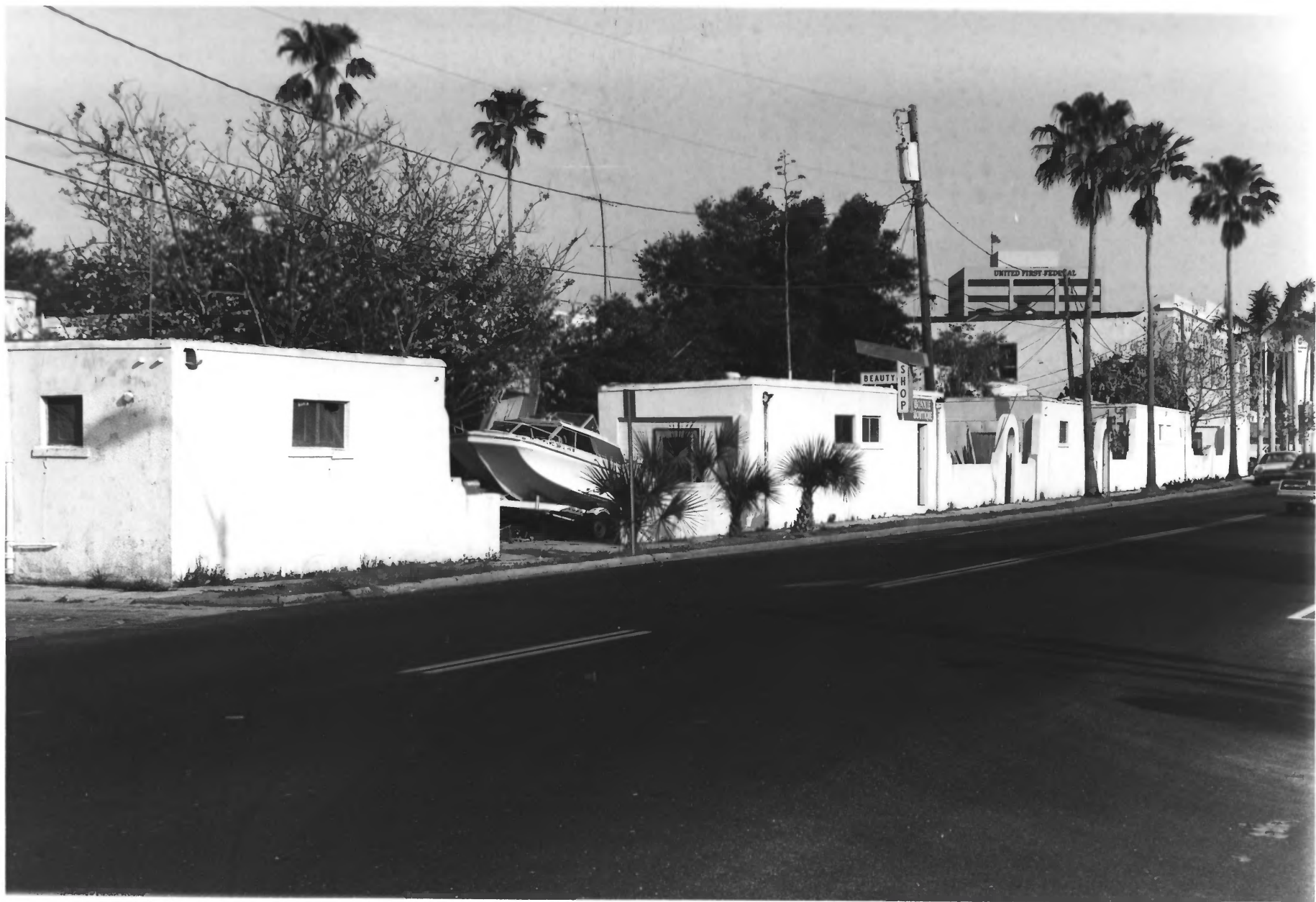
1. MRNS #2(o)
2. 446 Burns Court , Sarasota
(Sarasota County , Florida)
3. John McCarthy , County Historian
4. April 28 1983
5. Planning Dept. , Sarasota City Hall
6. East Elevation
7. Roll# 9 : 16



1. MRNS #2A Burns Court His. Dist.
2. 400 Burns Court , Sarasota
(Sarasota County , Florida)
3. John McCarthy , County Historian
4. April 24 1983
5. Planning Dept. , Sarasota City Hall
6. East Elevation
7. Roll# 7 : 32



1. MRNS #2N Burns Court Hist. Dist.
2. 443 Burns Court, Sarasota
(Sarasota County, Florida)
3. John McCarthy, County Historian
4. May 31, 1983
5. Planning Dept., Sarasota City Hall
6. Flory, Hotels and Apartments in Sarasota,
Florida. 1928. p.3
7. Roll# B : 6A



1. MRNS #2 Burns Court
2.
(Sarasota County , Florida)
3. John McCarthy , County Historian
4. April 18 1983
5. Planning Dept. , Sarasota City Hall
6. East Elevation
7. Roll# 4 : 30



Burns Court Historic District

1. MRNS #2

2.

(Sarasota County , Florida)

3. John McCarthy , County Historian

4. April 28 1983

5. Planning Dept., Sarasota City Hall

6. Aerial , Burns Court odd numbers ,
Pineapple Avenue Elevation

7. Roll# 9 : 29