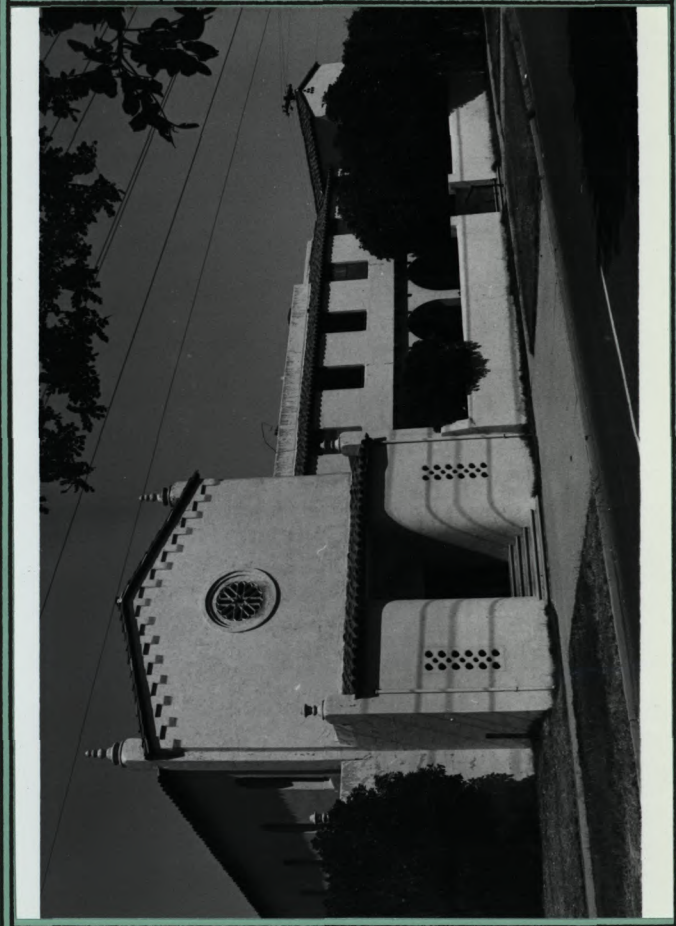


ARIZONA STATE HISTORIC PROPERTY INVENTORY

HISTORIC PROPERTY NAME Phoenix LDS Second Ward Church ✓	
COMMON PROPERTY NAME Arts Council Center	
PROPERTY LOCATION-STREET & NO. 1120 North 3rd Avenue ✓	
CITY, TOWN/VICINITY OF Phoenix ✓	ASSESSOR'S PARCEL NO. 111-32-98
OWNER OF PROPERTY State of Arizona	PHONE 261-7587
STREET & NO./P.O. BOX 205 South 17th Avenue	
CITY, TOWN Phoenix	STATE Arizona ✓
ZIP 85007	
FORM PREPARED BY Janus Associates	
Rev. by Gerald A. Doyle & Associates	DATE August 1982
STREET & NO./P.O. BOX 4331 N. 12th Street	PHONE 264-3082
CITY, TOWN Phoenix	STATE Arizona
ZIP 85014	
PHOTO BY Robert Graham	DATE May 1982
VIEW Toward NW	
HISTORIC USE Church	
PRESENT USE Arts Council Center	ACREAGE Less/acre
ARCHITECT/BUILDER Pope & Burton, Louis Alexander	
CONSTRUCTION/MODIFICATION DATES Constructed 1929-1932	

COUNTY Maricopa ✓	INVENTORY NO. KA-157 (S)
QUAD/COUNTY MAP Phoenix Quad	



PHYSICAL DESCRIPTION

The Phoenix Second Ward Church is a two-story masonry structure of asymmetrical massing over an irregular floor plan. The decorative detailing of the building is generally typical of the Spanish Colonial Revival. Major exterior features include low-pitched Mission tile roof, stuccoed walls, rectangular corbel tables under the gable eaves, arched doorways and windows, arcades, and corner finials. On the interior, the building is distinguished by a hand-painted coffer ceiling in the south hall and a barrel vault supported by arcades springing from Moorish columns in the chapel. The original heating and evaporative cooling systems are still in place in the basement and are operational.

Conceptually, the ground floor of the church may be divided between the chapel and the social hall. The chapel (35' by 90') occupies the south portion of the site and has entrances from both the south and east. Side aisles in the nave are covered with a one-story shed roof. The west end of the nave features a choir loft which circles behind the pulpit and speakers platform. A cross aisle near the front of the chapel connects the south entry to the social hall through a large wooden sliding door. This 40' by 60' room is two stories in height. At the north end of the hall is a raised stage 25' by 30'. The hall opens to a terrace on the west and a covered porch on the east. A balcony aisle on the east side of the hall provides access to six meeting rooms above the porch. Two one-story meeting rooms complete the north portion of the complex. The covered porch opens through an arcade to a walled patio entered from Third Avenue.

STATEMENT OF SIGNIFICANCE/HISTORY

The Phoenix Second Ward Church is the earliest remaining local example of a religious building designed by the prominent Mormon architect, Harold W. Burton. The property is of secondary importance for its association with the historic development of the LDS community in Phoenix.

Harold W. Burton and his partner, Hyrum C. Pope, were among the most influential of Mormon architects during the 20th century. They are credited with adapting modern styles to the needs of the LDS church as early as the second decade of the century, developing innovative floor plans which allowed flexibility in building use without loss of function, and creating standardized designs prior to the establishment of the Church Building Committee in 1954. The Phoenix Second Ward Church is characteristic of the work by Pope and Burton. It was designed in a style which has been called variously Mediterranean, Moorish, and Spanish Colonial Revival. The exterior appearance of the church was well suited for its residential setting of Period Revival houses. On the interior the building was most distinguished by the juxtaposition of the recreation hall perpendicular to the chapel so that people seated in both spaces could see and hear a speaker equally well. This feature, which was first perfected in the Second Ward Church, was to become common in many later LDS churches.

In addition to its architectural value, the property is noteworthy for its function as the center of the Second LDS Ward in Phoenix. The Ward was created ten years after the initial Phoenix organization was established. Prominent members of the

SOURCES OF ABOVE INFORMATION/BIBLIOGRAPHY

Janus Associates, Inc. Historical and Architectural Resources Along the Inner Loop Corridor, Phoenix, Arizona. Prepared for the Arizona Department of Transportation, 1981.
Maricopa County Assessor's Records.
Maricopa County Recorder's Records.
Phoenix City Directories.
Sanborn Insurance Maps.

GEOGRAPHICAL DATA/LEGAL DESCRIPTION/VERBAL BOUNDARY DESCRIPTION

BLOCK 6, LOTS 8 & 9, KENILWORTH ADDITION.

GENERAL COMMENTS/FUTURE PLANS FOR PROPERTY

This building is currently being rehabilitated for use as the Arts Council Center. The keeper of the National Register determined that this property is eligible for inclusion on the National Register on October 28, 1981.

1120 North 3rd Avenue
Phoenix LDS Second Ward Church
KA-157 (S)

PHYSICAL DESCRIPTION (Continued)

Although the building is in need of maintenance, the structure appears to be sound. No major alterations have been made to the buildings and its integrity is good.

STATEMENT OF SIGNIFICANCE/HISTORY (Continued)

Ward at the time the church was built include George F. Price, Golden Driggs, and George F. MacDonald.

For its architectural qualities and its role in the LDS Church, the building appears individually eligible for the National Register at the local level of significance.