

922

NATIONAL REGISTER OF HISTORIC PLACES
NATIONAL PARK SERVICE

NATIONAL REGISTER OF HISTORIC PLACES REGISTRATION FORM

This form is for use in nominating or requesting determinations of eligibility for individual properties or districts. See instructions in "Guidelines for Completing National Register Forms" (National Register Bulletin 16). Complete each item by marking "X" in the appropriate box or by entering the requested information. If an item does not apply to the property being documented, enter "N/A" for "not applicable." For functions, styles, materials, and areas of significance, enter only the categories and subcategories listed in the instructions. For additional space use continuation sheets (Form 10-900a). Type all entries.

1. Name of Property

historic name SOUTHERN RAILWAY FREIGHT DEPOT
other names/site number N/A

2. Location

street & number 1300 6th Avenue
city, town Columbus (N/A) vicinity of
county Muscogee code GA 215
state Georgia code GA zip code 31901

(N/A) not for publication

3. Classification

Ownership of Property:

- private
- public-local
- public-state
- public-federal

Category of Property:

- building(s)
- district
- site
- structure
- object

Number of Resources within Property:	<u>Contributing</u>	<u>Noncontributing</u>
buildings	1	0
sites	0	0
structures	0	0
objects	0	0
total	1	0

Contributing resources previously listed in the National Register: N/A

Name of previous listing: N/A

Name of related multiple property listing: N/A

4. State/Federal Agency Certification

As the designated authority under the National Historic Preservation Act of 1966, as amended, I hereby certify that this nomination meets the documentation standards for registering properties in the National Register of Historic Places and meets the procedural and professional requirements set forth in 36 CFR Part 60. In my opinion, the property meets the National Register criteria. () See continuation sheet.

Mark R. Edwards
Signature of certifying official

7-17-97
Date

Mark R. Edwards
State Historic Preservation Officer

In my opinion, the property () meets () does not meet the National Register criteria. () See continuation sheet.

Signature of commenting or other official

Date

State or Federal agency or bureau

5. National Park Service Certification

I, hereby, certify that this property is:

entered in the National Register

Edson H. Beall 8/21/97

determined eligible for the National Register

determined not eligible for the National Register

removed from the National Register

other, explain:

see continuation sheet

Keeper of the National Register

Date

6. Function or Use

Historic Functions:

TRANSPORTATION/rail-related

Current Functions:

COMMERCE/TRADE/business

7. Description

Architectural Classification:

OTHER: warehouse

Materials:

foundation	brick
walls	brick
roof	do not know
other	n/a

Description of present and historic physical appearance:

The Southern Railway Freight Depot is a single-story, brick building built in a typical form, that of a long warehouse building with long narrow bays, parallel to a railroad side track and to a main city street. The depot is built on the north-south axis. There were originally a series of roll-up doors (now replaced) on the rail side and sliding wooden doors (retained) on the street side. There is a wide canopy, supported by heavy timber brackets, on the west (or 6th Avenue) side. At the south end of the building is the original office area. The office is separated from the warehouse area by a doorway with a sliding metal fire door and retains original walls and wainscoting. The walls of the depot are solid, load-bearing brick with brick arches over windows and doorways. There is a modest amount of brick detailing above the front wood canopy and some at the north entrance. On the interior, there were originally 18 identically sized open bays with exposed wooden beams and trusses. Today, the interior warehouse space is divided into office space by cubicles. The walls remain unfinished brick. The building is adjacent to the railroad tracks, between the Swift Textile Mills and the Union Passenger Station (1901-National Register), facing 6th Avenue. There are no outbuildings. Changes to the building stem from its recent certified rehabilitation. At that time, a few of the wooden doors on the street side were made into glass doorways, the rest were retained, and the rolling doors on the track side were transformed into office walls and windows with shutters over the openings, still retaining the size of the original openings. The interior was subdivided into office space while retaining the exposed beams and some of the machinery used to roll up the track side doors. Parking has been added to the exterior grounds. There is a surviving brick street (6th Avenue) along the west side of the building, off the nominated property.

8. Statement of Significance

Certifying official has considered the significance of this property in relation to other properties:

nationally statewide locally

Applicable National Register Criteria:

A B C D

Criteria Considerations (Exceptions): N/A

A B C D E F G

Areas of Significance (enter categories from instructions):

Architecture
Commerce
Transportation

Period of Significance:

1916-1947

Significant Dates:

1916

Significant Person(s):

N/A

Cultural Affiliation:

N/A

Architect(s)/Builder(s):

Chief Engineer's Office, Southern Railway, Washington, D.C.

United States Department of the Interior
National Park Service

National Register of Historic Places Continuation Sheet

Section 8--Statement of Significance

Narrative statement of significance (areas of significance)

The Southern Railway Freight Depot is significant in architecture because it is a good representative example of a typical building built to be a railroad depot or warehouse. It is of utilitarian styling, being a long, low, one-story brick building originally divided into eighteen bays with an attached office area. It was built to include little or no detailing and to require little maintenance as a building. It retains the "look" of a warehouse, with its door openings on both sides, and most of its historic street-side doors. The original floor level also reflected the purpose of the building since it was fixed to allow easy transfer of materials from one side to the other. The bricks are of local manufacture and show the use of excellent local craftsmen skilled in bricklaying.

The building is significant in transportation and commerce because it was built by a railroad company to be a freight depot or warehouse as part of the major railroad hub centered around the Union Passenger Station. The building was built by Southern Railway in a way to allow for the more efficient transporting and transferring of goods. The railroads delivered materials on the east or track side and wagons (and later trucks) picked up the same material from the opposite or street side of the building. The offices were located at the south end of the building. The depot's location between the Swift Textile Mills and the Union Passenger Station (now on the National Register) indicates that it was an important element in the transportation center of Columbus, which was a major "rail head" or regional railroad center. The Union Station was finished in 1901, making this area the major rail center for Columbus. The present site was occupied in the late 19th century by other railroad-related structures. The Southern Railway complex was initially located further south in Columbus, but was relocated to this location at about the time this building was under construction. The 1914 City Directory shows the earlier Southern Railway Freight Warehouse on 6th Ave. and 5th St. and the 1916 directory shows that the operations had moved to the location of this building.

National Register Criteria

The depot meets National Register Criterion A because as a railroad freight warehouse within the city's union station complex, it was a vital part of the transportation industry in this major Georgia city, having been completed as part of the relocation of Southern Railway's facilities to this rail hub. It has remained a vital part of this rail hub as long as it was within railroad ownership. The building also meets National Register Criterion C because it was built to be a railroad depot or warehouse and retains its doors and door openings on both side as well as its large warehouse room, all reflecting

United States Department of the Interior
National Park Service

**National Register of Historic Places
Continuation Sheet**

Section 8--Statement of Significance

the utilitarian design for use by rail traffic on one side and trucks on the other side. The building still reflects this design in its restoration.

Criteria Considerations (if applicable)

N/A

Period of significance (justification)

The period of significance runs from the opening of the building, ca. 1916, until the end of the historic period, 1947.

Contributing/Noncontributing Resources (explanation, if necessary)

There is only one building on the nominated property, and it is a contributing building.

Developmental history/historic context (if appropriate)

N/A

9. Major Bibliographic References

Plans for "Southern Railway Freight Depot, Columbus, GA", dated 1913, located at the Norfolk Southern Corporation Headquarters, Engineering Department/Architectural/Southern Railway Side Office, Atlanta, GA.

Columbus, GA, city directories, researched by John Lassiter, Librarian, Bradley Library, Columbus. Deeds and Sanborn Fire Insurance Maps of Columbus, GA. copied by consultant for the owners.

Previous documentation on file (NPS): () N/A

- () preliminary determination of individual listing (36 CFR 67) has been requested
- (X) preliminary determination of individual listing (36 CFR 67) has been issued
date issued: Final Certification October 4, 1995.
- () previously listed in the National Register
- () previously determined eligible by the National Register
- () designated a National Historic Landmark
- () recorded by Historic American Buildings Survey #
- () recorded by Historic American Engineering Record #

Primary location of additional data:

- (X) State historic preservation office
- () Other State Agency
- () Federal agency
- () Local government
- () University
- (X) Other, Specify Repository: Norfolk Southern Corporation Headquarters, Atlanta, GA, location of plans and other material of construction and ownership.

Georgia Historic Resources Survey Number (if assigned):

10. Geographical Data

Acreage of Property 1.58 acres

UTM References

A) Zone 16 Easting 689400 Northing 3594300

Verbal Boundary Description

The nominated property is marked on the enclosed tax map/plat.

Boundary Justification

The nominated property is all the current owners own at this location and all that is associated with the building.

11. Form Prepared By

State Historic Preservation Office

name/title Kenneth H. Thomas, Jr., Historian
organization Historic Preservation Division, Georgia Department of Natural Resources
street & number 500 The Healey Building, 57 Forsyth Street
city or town Atlanta **state** Georgia **zip code** 30303
telephone (404) 656-2840 **date** June 16, 1997

Consulting Services/Technical Assistance (if applicable) (X) not applicable

name/title
organization
street and number
city or town state zip code
telephone

consultant
 regional development center preservation planner
 other:

(HPD form version 02-24-97)

United States Department of the Interior
National Park Service

National Register of Historic Places
Continuation Sheet

Photographs

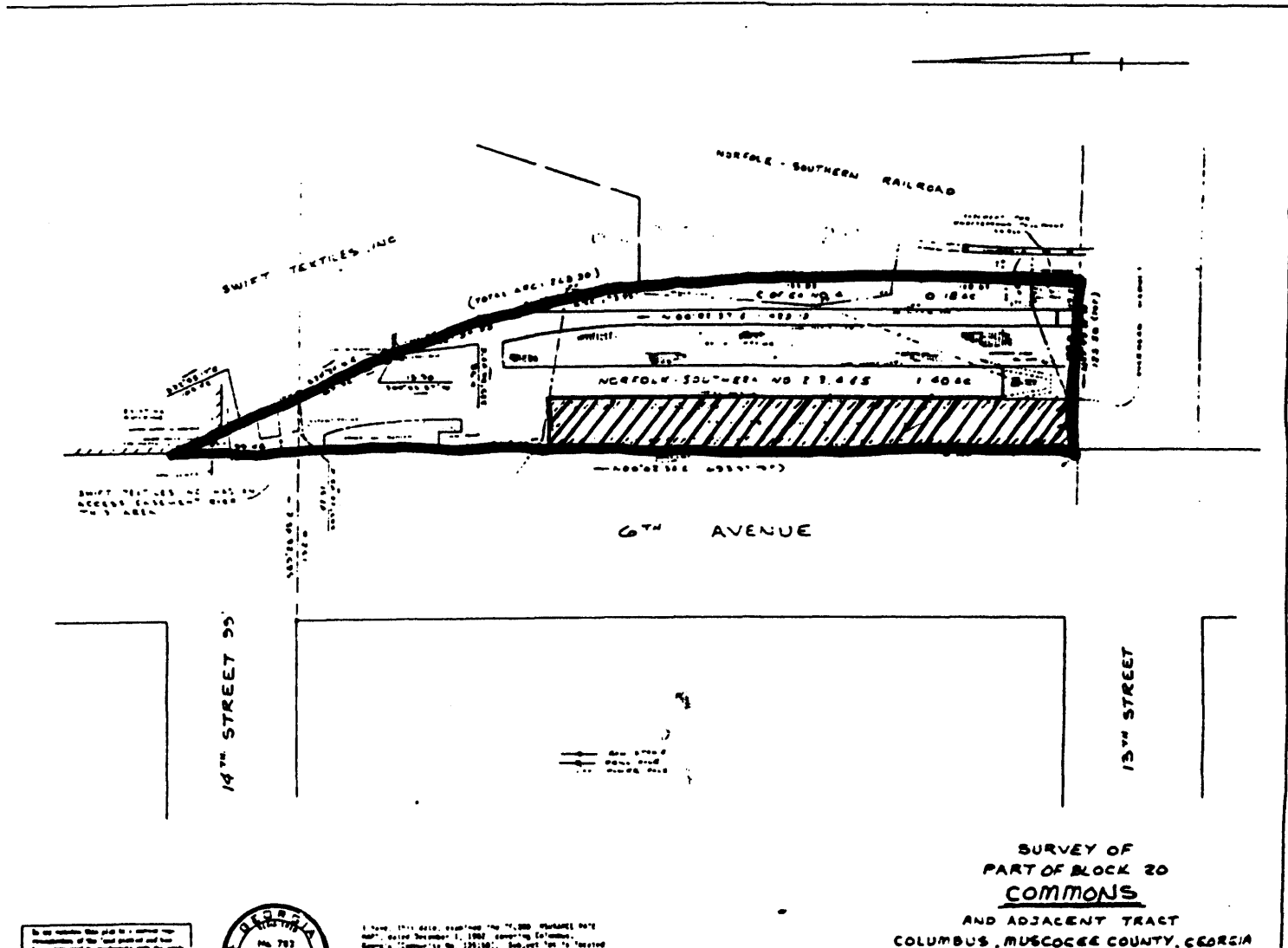
Name of Property: Southern Railway Freight Depot
City or Vicinity: Columbus
County: Muscogee
State: Georgia
Photographer: James R. Lockhart
Negative Filed: Georgia Department of Natural Resources
Date Photographed: September, 1996

Description of Photograph(s):

- 1 of 11 Front or west facade showing original doors; photographer facing northeast.
- 2 of 11 Front or west facade and south or office facade; photographer facing northeast.
- 3 of 11 South or office facade and east facade; photographer facing northwest.
- 4 of 11 East facade showing former doors, now offices; photographer facing west.
- 5 of 11 East facade and north facade; photographer facing southwest.
- 6 of 11 Interior view of offices in main warehouse room; photographer facing south.
- 7 of 11 Interior view of offices in main warehouse room; photographer facing southwest.
- 8 of 11 Interior view of offices in main warehouse room; photographer facing southeast.
- 9 of 11 Door leading to original office area on south end of warehouse room; photographer facing southeast.
- 10 of 11 Corridor through original office area at the south end; photographer facing south.
- 11 of 11 Original office room at south end; photographer facing east.

NORFOLK SOUTHERN RAILWAY PROPERTY
COLUMBUS, GEORGIA

REPRODUCTION, NOT TO SCALE



By an authority duly qualified in and for the State of Georgia, I have examined the original and certified that the same are a true and correct copy of the original as the same are on file in the office of the Clerk of the Superior Court of the County of Muscogee, Georgia.

[Signature]
Clerk of the Superior Court



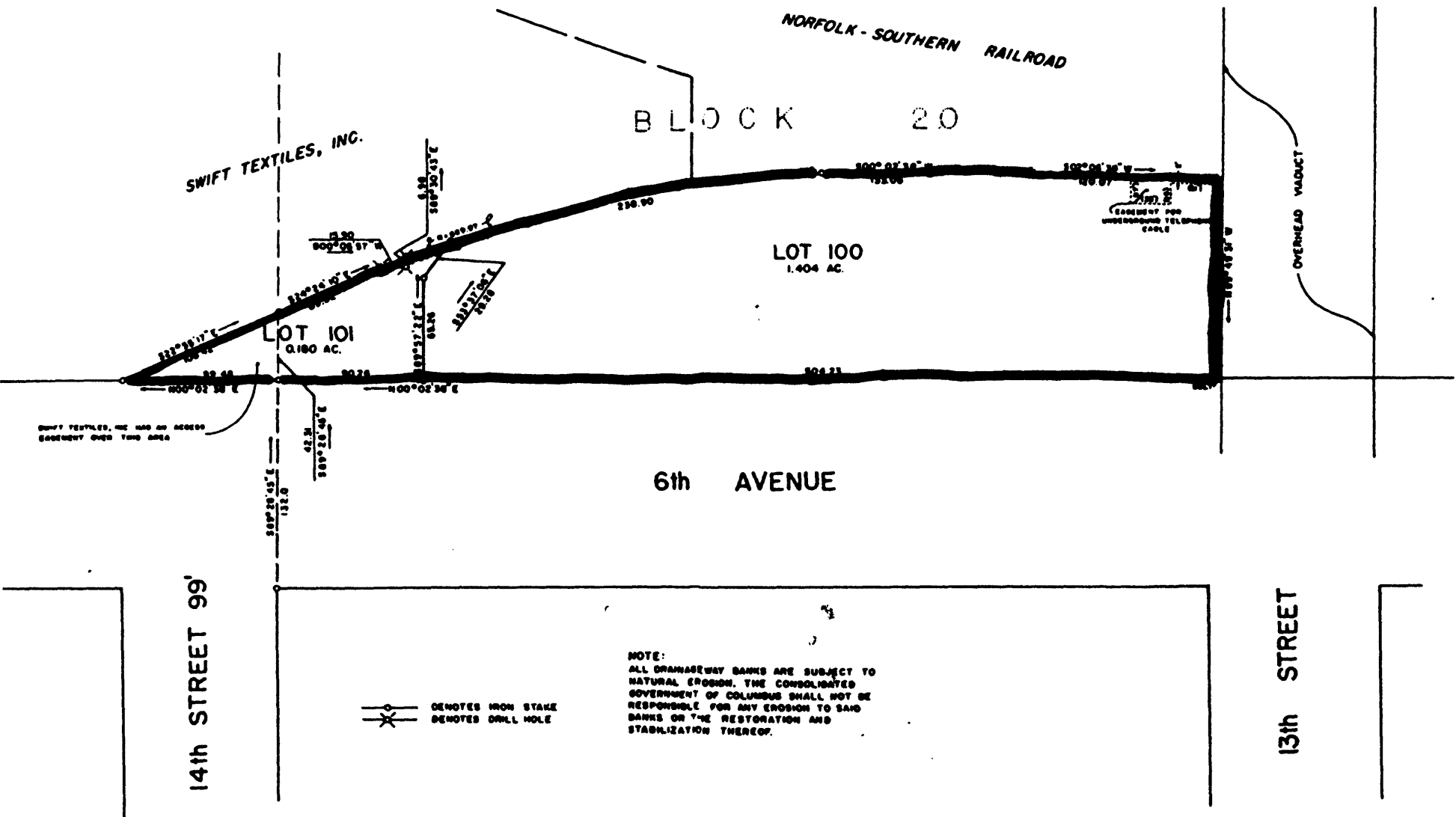
I have this day examined the 75,000 insurance note dated December 1, 1988, concerning the Southern Railway Freight Depot, and find the same to be a true and correct copy of the original as the same are on file in the office of the Clerk of the Superior Court of the County of Muscogee, Georgia.

[Signature]
Clerk of the Superior Court

SURVEY OF
PART OF BLOCK 20
COMMONS
AND ADJACENT TRACT
COLUMBUS, MUSCOGEE COUNTY, GEORGIA

COPIED FROM MUSCOGEE CC
PLAT RECORDS

Site Plan
Southern Railway Freight Depot
Columbus, Muscogee County, Georgia
Scale: Not to Scale.
Source: Replat by Moon, Meeks, and Patrick.
Date: 1992
Key: The Boundary is marked by a heavy black line. The building is marked by //// marks.



TO THE SUBDIVISION REGULATIONS OF
 S. GEORGIA. ALL THE REQUIREMENTS OF
 LAWS HAVE BEEN FULFILLED. THIS FINAL PLAT
 IS FINAL APPROVAL BY THE PLANNING DIVISION
 COLUMBUS, GEORGIA. THIS PLAT IS APPROVED
 BEING IN THE OFFICE OF THE CLERK OF
 COUNTY OF COLUMBUS, GEORGIA.

JAN 20 1993
 R.P.P.
 PLANNING DIVISION

CERTIFY
 IN MY OPINION, THIS IS A CORRECT REPRESENTATION
 OF THE LAND PLATTED AND HAS BEEN PREPARED IN
 CONFORMITY WITH MINIMUM STANDARDS AND RE-
 QUIREMENTS OF LAW

DATE 1-7-'93
 A. J. MOON JR. P.L.S.
 GEORGIA REG 702

Plat/ Site Plan
 Southern Railway Freight Depot
 Columbus, Muscogee County, Georgia
 Scale: 1" = 70'
 Source: Moon, Meeks, and Patrick
 Date: 1993
 Key: The nominated property is parcel
 100 and 101 which are marked by
 a heavy black line.

REPLAT OF
 PART OF BLOCK 20
COMMONS
 AND ADJACENT TRACT
 COLUMBUS, MUSCOGEE COUNTY, GEORGIA
 Scale 1" = 50' 7 January 1993
 MOON, MECKS & PATRICK, INC.
 Civil Engineers Columbus, Georgia

PLAT BK 121, p. 42