



Carlisle Indian Industrial School
National Historic Landmark,
Carlisle, Pennsylvania
Credit: Robert W. Craig,
Heritage Studies, Inc.
September, 1984.
Negative at MARO, NPS.

Building 2, Indian School
Superintendent's Residence, from NW.
Photo 1 of 13.



Carlisle Indian Industrial School
National Historic Landmark,
Carlisle, Pennsylvania
Credit: Robert W. Craig,
Heritage Studies, Inc.
September, 1984.
Negative at MARO, NPS.

Building 3, Administrative Office of
Indian School, from NW.
Photo 2 of 13.



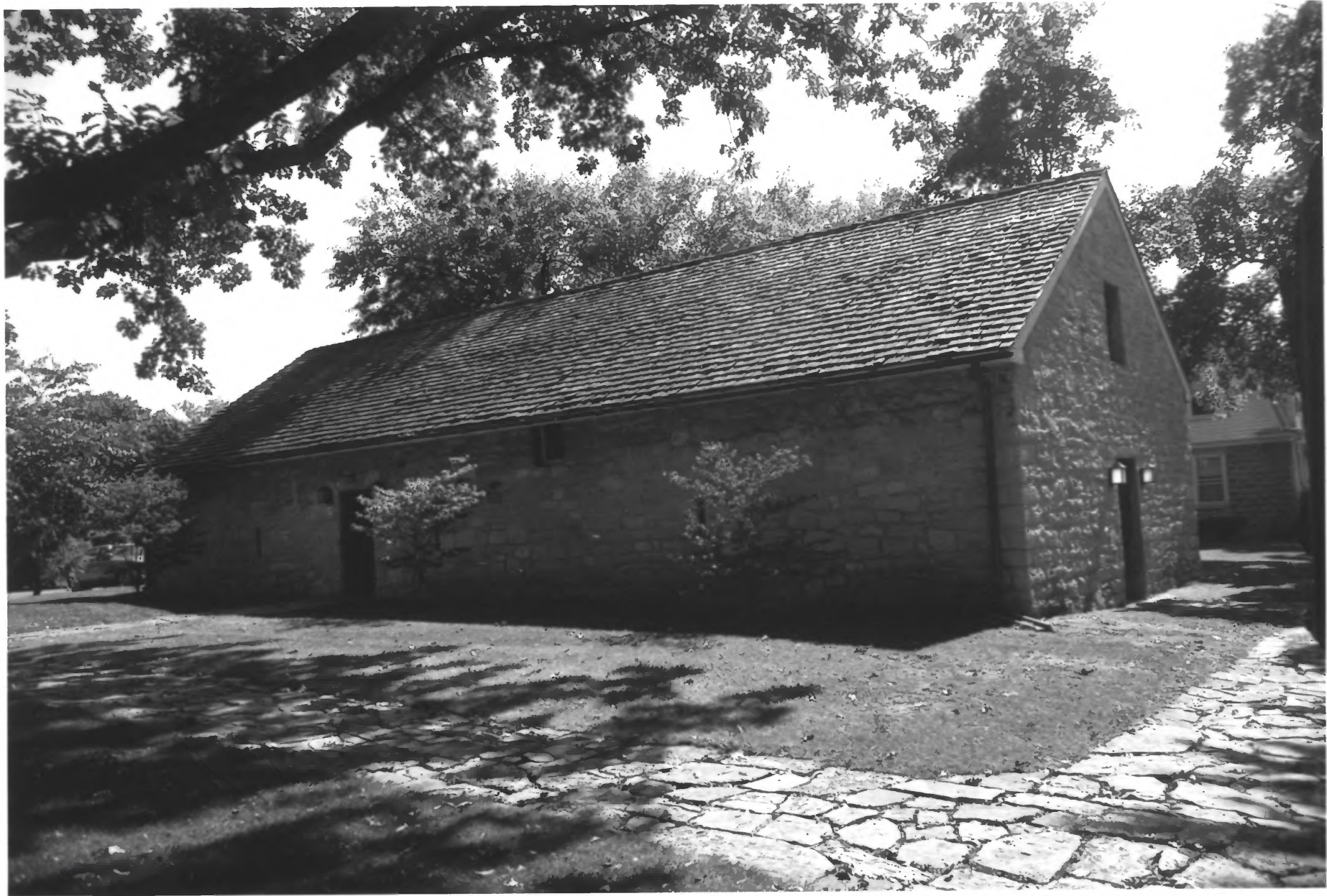
Carlisle Indian Industrial School
National Historic Landmark,
Carlisle, Pennsylvania
Credit: Constance M. Greiff,
Heritage Studies, Inc.
September, 1984.
Negative at MARO, NPS.

5
Building 23, Thorpe Hall, Indian
School Gymnasium (within landmark),
and Building 12, Upton Hall (outside
landmark) from S.
Photo 3 of 13.



Carlisle Indian Industrial School
National Historic Landmark,
Carlisle, Pennsylvania
Credit: Constance M. Greiff,
Heritage Studies, Inc.
September, 1984.
Negative at MARO, NPS.

Building 24, Girls' Quarters, Indian
School, from N.
Photo 4 of 13



Carlisle Indian Industrial School
National Historic Landmark,
Carlisle, Pennsylvania
Credit: Robert W. Craig,
Heritage Studies, Inc.
September, 1984.
Negative at MARO, NPS.

Building 38, "Hessian" Powder
Magazine, Guardhouse, Indian School,
from N.
Photo 5 of 13.



Carlisle Indian Industrial School
National Historic Landmark,
Carlisle, Pennsylvania
Credit: Constance M. Greiff,
Heritage Studies, Inc.
September, 1984.
Negative at MARO, NPS.

19
Building 119, Carlisle Barracks
Grandstand, from S.
Photo 6 of 13.



Carlisle Indian Industrial School
National Historic Landmark,
Carlisle, Pennsylvania
Credit: Constance M. Greiff,
Heritage Studies, Inc.
September, 1984.
Negative at MARO, NPS.

313
Buildings 311 (nearest) and 312
(center), Quarters, Indian School, and
Building 313, Officers' Mess
(furthest), from S.
Photo 7 of 13.



Carlisle Indian Industrial School
National Historic Landmark,
Carlisle, Pennsylvania
Credit: Constance M. Greiff,
Heritage Studies, Inc.
September, 1984.
Negative at MARO, NPS.

76-214

Building 314, Laundry Building, Indian
School, from N.
Photo 8 of 13.



Carlisle Indian Industrial School
National Historic Landmark,
Carlisle, Pennsylvania
Credit: Constance M. Greiff,
Heritage Studies, Inc.
September, 1984.
Negative at MARO, NPS.

Building 315, Warehouse, Indian
School, from E.
Photo 9 of 13.



RESERVED
QUARTERS
OCCUPANTS
ONLY

Carlisle Indian Industrial School
National Historic Landmark,
Carlisle, Pennsylvania
Credit: Robert W. Craig,
Heritage Studies, Inc.
September, 1984.
Negative at MARO, NPS.

Building 321, "Pop" Warner's
Residence, Indian School, from NE.
Photo 10 of 13.



Carlisle Indian Industrial School
National Historic Landmark,
Carlisle, Pennsylvania
Credit: Robert W. Craig,
Heritage Studies, Inc.
September, 1984.
Negative at MARO, NPS.

Over
Building 322, Leupp Indian Art Studio,
Indian School, from SE.
Photo 11 of 13.



Carlisle Indian Industrial School
National Historic Landmark,
Carlisle, Pennsylvania
Credit: Robert W. Craig,
Heritage Studies, Inc.
September, 1984.
Negative at MARO, NPS.

Athletic Field, Indian School, from W.
Photo. 12 of 13.



Carlisle Indian Industrial School
National Historic Landmark,
Carlisle, Pennsylvania
Credit: Robert W. Craig,
Heritage Studies, Inc.
September, 1984.
Negative at MARO, NPS.

20 + 21 east of main
Buildings 20 and 21 (outside landmark)
from SW.

Photo 13 of 13.



ARMSTRONG HALL

ARMSTRONG HALL, named for Maj. Gen. John Armstrong who commanded Carlisle Barracks several times during the period 1775-1782, now contains offices of Post Headquarters, Carlisle Barracks. General Armstrong was the first Brigadier General commissioned in the Continental Army. This building was used by the Indian School as a laundry.

PLEASE CREDIT US ARMY PHOTO



Indian Cemetery

1979