



National Register of Historic Places Registration Form

This form is for use in nominating or requesting determinations for individual properties and districts. See instructions in National Register Bulletin, *How to Complete the National Register of Historic Places Registration Form*. If any item does not apply to the property being documented, enter "N/A" for "not applicable." For functions, architectural classification, materials, and areas of significance, enter only categories and subcategories from the instructions.

1. Name of Property

Historic name: Tinnerman Steel Range Company

Other names/site number: Tinnerman Stove & Range Company, Tinnerman Products, Inc.

Name of related multiple property listing:

N/A

(Enter "N/A" if property is not part of a multiple property listing)

2. Location

Street & number: 2048 Fulton Road

City or town: Cleveland State: OH County: Cuyahoga

Not For Publication: N/A Vicinity: N/A

3. State/Federal Agency Certification

As the designated authority under the National Historic Preservation Act, as amended,

I hereby certify that this X nomination ___ request for determination of eligibility meets the documentation standards for registering properties in the National Register of Historic Places and meets the procedural and professional requirements set forth in 36 CFR Part 60.

In my opinion, the property X meets ___ does not meet the National Register Criteria. I recommend that this property be considered significant at the following level(s) of significance:

___ national ___ statewide X local

Applicable National Register Criteria:

X A ___ B ___ C ___ D

<u>Barbara Power</u> DSHPO Inventory & Registration <u>Dec. 29, 2016</u>	
Signature of certifying official/Title:	Date
<u>State Historic Preservation Office, Ohio History Connection</u>	
State or Federal agency/bureau or Tribal Government	

In my opinion, the property ___ meets ___ does not meet the National Register criteria.	
Signature of commenting official:	Date
Title :	State or Federal agency/bureau or Tribal Government

Tinnerman Steel Range Company
Name of Property

Cuyahoga, OH
County and State

4. National Park Service Certification

I hereby certify that this property is:

- entered in the National Register
- determined eligible for the National Register
- determined not eligible for the National Register
- removed from the National Register
- other (explain: _____)

for Colson H. Beall *2.21.27*
Signature of the Keeper Date of Action

5. Classification

Ownership of Property

(Check as many boxes as apply.)

- Private:
- Public – Local
- Public – State
- Public – Federal

Category of Property

(Check only **one** box.)

- Building(s)
- District
- Site
- Structure
- Object

Tinnerman Steel Range Company
Name of Property

Cuyahoga, OH
County and State

Number of Resources within Property

(Do not include previously listed resources in the count)

Contributing	Noncontributing	
<u>1</u>	<u> </u>	buildings
<u> </u>	<u> </u>	sites
<u> </u>	<u> </u>	structures
<u> </u>	<u> </u>	objects
<u>1</u>	<u>0</u>	Total

Number of contributing resources previously listed in the National Register 0

6. Function or Use

Historic Functions

(Enter categories from instructions.)

INDUSTRY/manufacturing facility

Current Functions

(Enter categories from instructions.)

VACANT/NOT IN USE

Tinnerman Steel Range Company
Name of Property

Cuyahoga, OH
County and State

7. Description

Architectural Classification

(Enter categories from instructions.)

LATE 19TH AND EARLY 20TH CENTURY

AMERICAN MOVEMENTS/Commercial Style

OTHER

Materials: (enter categories from instructions.)

Principal exterior materials of the property: Brick, Concrete, Stone/Limestone,
Synthetics/Rubber, Metal/Steel Glass

Narrative Description

(Describe the historic and current physical appearance and condition of the property. Describe contributing and noncontributing resources if applicable. Begin with a **summary paragraph** that briefly describes the general characteristics of the property, such as its location, type, style, method of construction, setting, size, and significant features. Indicate whether the property has historic integrity.)

Summary Paragraph

The Tinnerman Steel Range Company constructed its manufacturing building in the middle of a residential block, south of Lorain Avenue between Fulton Road (formerly Willett St.) and W. 38th Street (formerly Mechanic St.) in the Ohio City neighborhood of Cleveland (Figures 1 & 2). Constructed over a nearly sixty-year period, the manufacturing facility started with an original building in c.1893 with a series of additions required to accommodate company growth and expansion. The brick building sections within the block without street frontage can be described as utilitarian and industrial, with no architectural detail to speak of. The 1914 three-story addition that gave the manufacturing facility street frontage on Fulton Road (Photos 1-5) was designed by architect William J. Carter,¹ who went on to design the Lorain Street Savings & Trust Company Building and the Miles Park Masonic Temple in Cleveland, as well as a number of other manufacturing/warehouse buildings and apartment buildings.² The Fulton addition gave the company a front door and an identity as business was booming and the company name was changed to the Tinnerman Stove & Range Company. Building continued by Tinnerman into the early 1950s, and all buildings were eventually connected both on the interior and exterior.

¹ Warehouse Building Permit, *The Plain Dealer*, 4 June 1914, p. 16.

² Cleveland Architects Database, Cleveland Landmarks Commission.

Tinnerman Steel Range Company
Name of Property

Cuyahoga, OH
County and State

The Tinnerman Steel Range Company Building Construction Chronology & Summary:

1881 – Future Tinnerman site is still small residential parcels and vacant lots (Figure 3).

1886 – Same, (Figure 4).

1892 – Site of first the Tinnerman building has been cleared and is a vacant parcel (Figure 5, indicated with a star).

1894 – 1886 Sanborn Map corrected to 1894 shows a two-story building on the triangular lot with the notation “STEEL RANGE M`F`Y” (Figure 6); in 1894 the area south of this view was not mapped so no further information on any other Tinnerman construction in 1894 is available.

1896 – A second building, which was constructed at the same time or right after the first building (label 1 added to Figure 7), appears south of the original building on the south side of a narrow alley; the map shows the nearly-square, second building (label 2 added to Figure 7), a rectangular foundation to the south with a note that it will receive a two-story addition (label 3 added to Figure 7), and houses on the adjacent parcels to the west and south (Figure 7).

1898 – Map shows the entire east half of the parcel between the alley and Bell (Vinton) St. built out with residential still adjacent to the west and south (Figure 8).

1912 – Same mid-block building and parcel configurations (Figures 9 & 10); three-story addition on Fulton constructed in 1914 will replace two houses to the east of the triangular Tinnerman parcels (labeled “SHOP”).

1922 – Footprint of brick three-story 1914 addition on Fulton shown on plat map (Figure 11).

1937 – Tinnerman Stove & Range Company clearly shown on map with same mid-block building configurations and a connector across the alley (Figure 12).

1940 – 1937 Hopkins Map used to show alleys vacated by the City of Cleveland to allow significant expansion of Tinnerman due to WWII manufacturing contracts (Figure 13).

1951 – Maps showing expansion and construction of additions and three, small free-standing buildings; the construction stopped at the vacated China Ct. SW (Figure 14) with parking from the vacated alley south to Chatham Ave. SW (Figure 15).

1952 – Same (Figure 16).

1959 – Aerial view of Tinnerman showing small free-standing buildings at south end of the property (Figure 17).

Tinnerman Steel Range Company
Name of Property

Cuyahoga, OH
County and State

1979 - Aerial view of Tinnerman showing small free-standing buildings gone and additions the same or similar to existing conditions at south end of the property (Figures 18 & 2).

Narrative Description

Built c.1893 by George A. Tinnerman on a small parcel that had been cleared of residential buildings by 1892 (Figures 3-6), the building was sandwiched in at the rear of the residential properties fronting on Fulton Road and W. 38th Street. The location of the new manufacturing facility was near George Tinnerman's hardware store at the corner of Lorain and Fulton (no longer extant). Trained as a tinner, Tinnerman first opened his store selling stoves and tinware c.1868, and by 1874 the business had evolved into a general hardware store. Tinnerman developed significant ideas for improving the stoves he sold through his hardware store, and by 1888 was listed as a stove manufacturer in city directories.

Somewhat inaccessible today because of adjacent properties and fencing, the two-story, flat-roofed, brick and heavy timber building constructed by the Tinnerman Steel Range Company c.1893 was irregular in shape to maximize the confined, triangular-shaped lot that was only accessible from narrow flanking alleys on the east and west side of the parcel and from an alley that provided access from W. 38th Street (Photos 6-9, Figures 6 & 20). The unadorned brick building features large masonry openings with a newer metal overhead dock door and industrial steel sash windows, some of which are in place today but have been covered over the years with a variety of materials including siding and boards. Other windows have been replaced and some have been removed and the masonry openings infilled with concrete block (Photo 4), likely reflecting changes in use and security given the location in the middle of a block. By 1896, the company had expanded south across a small alley onto two additional formerly residential parcels where a one-story, brick and heavy timber manufacturing building was constructed and a foundation was put in place for the next addition (Figures 7-9), which was likely built the same year and essentially matches the construction details of the adjacent building. By 1912, a small brick connector had been built across the alley between the two buildings. The space between the buildings was infilled later but the exact date is unknown.

The most significant addition (Photos 1-5) was designed by William J. Carter and was constructed in 1914 facing Fulton Road. The three-story, flat-roofed, brick, steel and reinforced concrete addition sits at the sidewalk. It's three structural bays wide, seven structural bays deep, with an abandoned water tower platform and shaft rising above the parapet at the northwest corner of the addition, a stair tower at the southeast corner set back slightly from the front elevation, and elevator tower at the southwest corner. At the rear, the addition abuts the east side of the original two-story building.

To the north of the stair tower, which has an entrance with a metal replacement door at the base, the front (east) elevation has two masonry openings in the first and third structural bays that used to provide vehicle access in and out of the building. The original doors and decorative, bracketed roof hoods are no longer in place (Figure 19). One dock opening is no longer used and

Tinnerman Steel Range Company
Name of Property

Cuyahoga, OH
County and State

is boarded from the inside. The other has a modern rolling metal dock door mounted on the face of the building and a secondary overhead door mounted from the inside of the opening. Between the two loading bays are three masonry window openings covered with signage graphics and a surface-mounted sign from the most recent tenant. Above on the second and third floors, there are paired masonry window openings over the dock bays flanking the center bay, which has three windows on each floor. The original windows have been replaced on this elevation with newer aluminum hoppers and single-hung sash. Boards slightly inset within the masonry opening cover six of the seven masonry openings on the third floor. Simple ornamentation completes the elevation with projecting header bricks stacked to create vertical panels on the brick piers between each structural bay as well as on the stair tower bay. Stone appointments accent the piers at the third floor and parapet levels. The brick and stone detail is repeated to create a small, rectangular, horizontal panel above each window on the third floor. Stone caps the top of the parapet wall.

The north and south elevations of the 1914 addition consist of plain, slightly projecting brick piers with large expansive masonry-framed openings running pier to pier on every floor (Photos 4 & 5). Most openings still have the original industrial steel sash windows that have been covered from the outside with a variety of materials including acrylic panels, metal and siding. The original windows have been removed from several openings and have been replaced with glass block or newer windows. The original industrial steel sash windows remain visible in the elevator tower on the southwest corner of the addition. A fire escape remains on the north elevation and clay tiles cap the top of the parapet walls.

The last significant building campaign came in 1940-41 with the change in the company name to Tinnerman Products, Inc. and the suspension of the stove and range manufacturing. A brick and structural steel addition was made along the west elevation of the 1896 heavy timber-frame building. The addition has industrial steel sash windows that are also covered with brick infill and siding, while some of the windows have been replaced with glass block (Photo 10) along the alley to the west. A brick, structural steel and concrete building with a two-story interior that includes a clerestory (Photo 10) was constructed as an addition on the south end of the property to expand the manufacturing of speed nut fasteners, a type of fastener invented and patented by George Tinnerman's son, Albert, in 1923-24. The speed nut business grew exponentially as it was in demand in many manufacturing industries, including appliances, cars, aircraft and military just to name a few. Like the rest of the building, the addition featured large industrial steel sash windows, which are in place and visible on the interior along with the exposed structure and clerestory.

Several very small buildings constructed by Tinnerman Products, Inc. and a parking lot were in place at the south end of the Tinnerman property by 1951 (Figures 14 & 15). Those small buildings were replaced with a concrete block and brick addition sometime after 1979, which is outside the Period of Significance, by a subsequent owner. The one-story addition (Photos 10-12) features four loading dock bays, two horizontal glass block windows and a man door. Some of the concrete has been covered with corrugated metal panels.

Tinnerman Steel Range Company
Name of Property

Cuyahoga, OH
County and State

Building Interiors

With the exception of the loading dock addition on the south end, the interiors of all the additions were connected during the Period of Significance. Throughout the building, masonry walls and exposed wood and steel structure are painted along with the industrial steel sash window frames and glass.

The first floor of the 1914 addition houses the building entrance which has a vestibule that leads to an original stair that services all three floors (Photo 13). The majority of the 1914 first floor space has a dropped ceiling, painted gypsum board walls, and VCT tile floors (Photo 14), but the masonry openings with boards that cover the steel sash windows are visible (Photo 15). The exception is along the north elevation where the full ceiling height and steel structure are exposed along with the industrial steel sash windows (Photos 16-18). The original freight elevator (Photo 19) is still in place in the southwest corner of the addition.

Moving through the back of the 1914 addition first floor into the original building, the structure has been rebuilt and reinforced with structural steel (Photos 20-22). The north half of the building is two stories while the south half is a two-story volume of space with the steel structure and ceiling exposed. Newer partial walls sit within the large volume of space. Perimeter walls are painted brick and the floor is painted concrete.

To the south is the heavy timber frame c.1896 addition (Photos 23-24) with exposed structure, painted brick walls, industrial steel sash windows and wood strip flooring. To the west is a the 1940-41 addition (Photos 25-27) constructed of structural steel, brick and concrete with industrial steel sash windows. Floors are a mix of wood strip and concrete.

Abutting the south ends of the additions above, the 1940-41 addition (Photos 28-32) with the clerestory spans the width of the property and connects to the 1980s loading dock addition on the south end of the building. The clerestory addition has exposed structural steel, brick and beaded board walls, industrial steel sash windows and a mix of floor that includes wood strip, plywood, metal plate, concrete and carpet. The space is divided in areas with non-historic partition walls of wood stud and drywall. The clerestory windows are covered on the outside but visible from the interior. The loading dock is a concrete and brick addition with structural steel and painted concrete floors (Photo 33).

The second (Photos 34-41) and third (42-44) floors of the 1914 addition are finished in much the same way as the first floor—dropped ceilings, painted gypsum board walls and carpet or VCT tile floors. An original stair with a hinged metal floor door remains in place (Photo 34) on the second floor. The rear of the second floor is connected to the partial second-story of the original building (Photos 40-41). Some of the steel sash windows are visible on these floors (Photos 39, 44) and in other areas the masonry openings are infilled with painted boards (Photos 35, 43) to cover the windows or the walls are furred out with gypsum boards.

Tinnerman Steel Range Company
Name of Property

Cuyahoga, OH
County and State

Integrity

As the Tinnerman Steel Range Company grew from the mid-1890s through the mid-1950s, so did the building that housed the manufacturing functions of the company, illustrating the evolution of the company during the Period of Significance. As manufacturing needs increased, changed and evolved, additions were made to the original landlocked building by acquiring adjacent parcels to the east and south for rezoning and expansion. Despite the physical expansion of the Tinnerman footprint, the building remained largely surrounded by residential properties, a setting that still exists today. The building retains the necessary aspects of integrity to communicate its function as a manufacturing facility. It occupies its original location in a relatively unchanged mid-block setting surrounded by residential properties. The three-story 1914 addition that fronts on Fulton Road became the front and main block of the building when it was constructed. While some windows have been replaced or are covered and the entrance doors and decorative overhangs have been altered, the building retains integrity of materials, design and setting. In keeping with the manufacturing function of the building, restrained stylistic references ornament the exterior and large bands of industrial steel sash windows remain in place, although covered with a variety of materials. Beyond the three-story block fronting on Fulton, the building is utilitarian with functionality and limited space driving the construction of the additions. On the interior, open floors, exposed timber and steel construction, and sparse finishes remain, some under and behind non-historic partial walls and dropped ceilings. The expanses of industrial steel sash windows are visible nearly everywhere on the interior. The alterations are reversible and the building retains the feeling and association with its manufacturing history. The building is in good condition with some elements in fair condition.

Tinnerman Steel Range Company
Name of Property

Cuyahoga, OH
County and State

8. Statement of Significance

Applicable National Register Criteria

(Mark "x" in one or more boxes for the criteria qualifying the property for National Register listing.)

- A. Property is associated with events that have made a significant contribution to the broad patterns of our history.
- B. Property is associated with the lives of persons significant in our past.
- C. Property embodies the distinctive characteristics of a type, period, or method of construction or represents the work of a master, or possesses high artistic values, or represents a significant and distinguishable entity whose components lack individual distinction.
- D. Property has yielded, or is likely to yield, information important in prehistory or history.

Criteria Considerations

(Mark "x" in all the boxes that apply.)

- A. Owned by a religious institution or used for religious purposes
- B. Removed from its original location
- C. A birthplace or grave
- D. A cemetery
- E. A reconstructed building, object, or structure
- F. A commemorative property
- G. Less than 50 years old or achieving significance within the past 50 years

Tinnerman Steel Range Company
Name of Property

Cuyahoga, OH
County and State

Areas of Significance

(Enter categories from instructions.)

INDUSTRY

INVENTION

Period of Significance

c. 1893-1957

Significant Dates

c. 1893, 1914, 1923, 1924, 1940

Significant Person

(Complete only if Criterion B is marked above.)

N/A

Cultural Affiliation

N/A

Architect/Builder

Carter, William J.

Austin Co.

Tinnerman Steel Range Company
Name of Property

Cuyahoga, OH
County and State

Statement of Significance Summary Paragraph (Provide a summary paragraph that includes level of significance, applicable criteria, justification for the period of significance, and any applicable criteria considerations.)

The Tinnerman Steel Range Company Building is eligible for listing in the National Register of Historic Places under Criterion A. It is locally significant in the areas of Industry and Invention as well as for its associations from the late 19th through mid-20th centuries with three generations of the Tinnerman family and their industrial company, which created important innovations in the areas of kitchen stoves and fasteners. The Tinnerman Steel Range Company constructed the original manufacturing building c.1893 and made the most significant of several additions in 1914 when a three-story building gave the manufacturing facility its first street frontage. As the decades progressed and their business expanded, additions were made to the original building with the next significant building campaign coinciding with World War II and their government contracts supporting the war effort. The Period of Significance is c.1893-1957, the period that the building and site served as the home of Tinnerman Steel Range Company, Tinnerman Stove & Range Company and finally, Tinnerman Products, Inc. The level of innovation in both kitchen stoves and fasteners at the company is illustrated by at least 106 United States patents filed between 1910 and 1949.³

Narrative Statement of Significance (Provide at least **one** paragraph for each area of significance.)

Elaboration

George A. Tinnerman (1845 – 1925)⁴ was about two years old when his parents emigrated from Prussia in 1847 and settled west of the Cuyahoga River, which became part of Cleveland in 1854. After a brief period as a farmer, Henry F. Tinnerman, George's father, resumed his trades of blacksmithing and wagon making and opened a business near the present day intersection of Lorain Avenue and Fulton Road. George Tinnerman completed a three-year apprenticeship in the tinner's trade while in his late teens and continued in his trade as a journeyman. Henry is last listed as a wagon maker in the 1866 *Cleveland Leader City Directory*, the same year George is listed as a tinner. George then opened his own business in 1867 selling stoves and tinware, from the location of his father's former business. The business soon evolved into a general hardware store, as shown by the illustration of his building in the 1874 *Atlas of Cuyahoga County* (Figure 21). By the mid-1880s, Tinnerman was well known in the city as a purveyor of a variety of hardware, paints and painting supplies, along with sheet metal fabrication of tin, copper, and iron, including roofing and gutters. He sold a broad selection of cooking and parlor (heating) stoves⁵ and used this knowledge to develop significant ideas for improving them. His first

³ Research was conducted in the U.S. Patent and Trade Office annual volumes, plus Google Patents (accessed September 24, 2016). Of the 107 patents identified, 17 involved stoves and ranges, and 89 involved fasteners. There was also one design patent for a gas and coal range. In addition, 44 Canadian patents, issued in 1950 or earlier, were identified on the European Patent Office website (accessed 24 September 2016).

⁴ Death notice, G. A. Tinnerman, *The Plain Dealer*, April 18, 1925, p. 25.

⁵ *Leading Manufacturers and Merchants of the City of Cleveland and Environs: A Half Century's Progress 1836-1886*. New York: International Publishing Co., 1886, p. 115.

Tinnerman Steel Range Company
Name of Property

Cuyahoga, OH
County and State

improvement was to manufacture ranges—defined as a cooking stove with an oven and a flat top with heating elements—from wrought steel⁶ instead of the traditional cast iron. According to accounts, Tinnerman tested his prototype by having his wife bring to the store a batch of biscuit dough, placed it in a heated oven, and told her the biscuits would be ready in seven minutes, which proved to be true. He then demonstrated the range to a number of his friends with the proposition: "Give me \$10 and your old stove and I will set up one of my ranges in your kitchen." In most instances his offer was accepted, and the new ranges worked satisfactorily.

Satisfied with the performance of the steel range after this informal marketing, by 1885 Tinnerman was manufacturing and selling⁷ what would be known first as Ohio Wrought Steel Ranges, and then more simply as Ohio Steel Ranges (Figures 22 and 23). He is listed as a stove manufacturer for the first time in the 1888 *Cleveland City Directory*, with the notation "wrought steel ranges." The company name Tinnerman Steel Range Company first appeared in the 1899 *Cleveland City Directory*. In 1900, the *Cleveland City Directory* listed six Stove Manufacturers, including Tinnerman. The number of listings for Stove and Range Manufacturers increased to nineteen in the 1910 *Cleveland City Directory* and 26 in the 1928 *Cleveland City Directory*. Not all of these companies were necessarily direct competitors of Tinnerman. For example, a company might manufacture only small, portable stoves for heating purposes, or kitchen ranges that did not provide the option of using gas piped into homes as a fuel source. Like many industries during the early 20th century, numerous small manufacturers satisfied consumer demand for stoves and ranges. Only later in the 20th century did kitchen appliance manufacturing consolidate among fewer manufacturers.

The Tinnerman Steel Range Company marketed its products for home, restaurant, and hotel use. Within fifteen years, Tinnerman was selling Ohio Steel Ranges as far away as the West Coast (Figure 24). In 1906⁸ Tinnerman introduced their version of a "combination gas and coal range," meaning an appliance that operated on gas or another fuel, such as coal, and the firm won awards at the 1909 Cleveland Industrial Exposition (Figure 25). One company advertisement touted that "if gas and coal are both unavailable, you can burn *wood, coke, empty boxes, or the BACK FENCE*" (Figure 26).

The first recorded location of the company's manufacturing plant was in the center of a block south of Lorain Avenue, not far from Tinnerman's store. Built c.1893, the building was originally accessible only via alleys off W. 38th (Mechanic) St. to the west and Chatham Ave. to the south (Figure 6). The company's success required expansion, so another building was constructed across a small alley to the south, and the foundation for the third addition was in place by 1896 (Figure 7). In 1914, a 60,000 square foot, three-story addition was built,⁹ which created frontage on Fulton Road (Figures 11, 12, and 19) by demolishing two houses. Shortly

⁶ Wrought steel is defined as any hot or cold working of the metal. In this instance, it would mean the forming of metal into the sheets needed to create a kitchen range.

⁷ Coates, William R. *A History of Cuyahoga County and the City of Cleveland*. Vol. 3, pp. 113-115. Chicago and New York: The American Historical Society, 1924; *Leading Manufacturers and Merchants of the City of Cleveland and Environs: A Half Century's Progress 1836-1886*. New York: International Publishing Co., 1886, p. 115.

⁸ Advertisement, *The Plain Dealer*, 28 November 1918, p. 9, noting that twelve years had passed since the introduction of their combination range.

⁹ Warehouse Building Permit, *The Plain Dealer*, 4 June 1914, p. 16.

Tinnerman Steel Range Company

Cuyahoga, OH

Name of Property

County and State

after the addition was completed, the name of the company was changed to the Tinnerman Stove & Range Company.¹⁰ The hardware store was closed in 1913 to focus on the stove and range manufacturing, in which the company had become a regional leader.¹¹ During the 1910s, the company received several patents related to improvements in burners and oven compartments for combination ranges.

George Tinnerman retired from the day-to-day operation of the business in 1916, handing management of the company over to his only surviving son, Albert H. Tinnerman.¹² A 1924 county history noted that, "... for nearly forty years the products of the Tinnerman stove and range manufactory have been recognized as representing an important factor in the industrial and commercial activities in Cleveland."¹³ George A. Tinnerman was also known for his civic stewardship and material advancement of Cleveland, especially the development of the West Side as one of the organizers and incorporators of the Lorain Street Savings Bank in 1890.¹⁴ Later renamed the Lorain Street Savings & Trust, George Tinnerman was bank vice president prior to becoming president May 12, 1897, a position he held until his death in 1925.¹⁵

Albert Tinnerman (1879-1961)¹⁶ like his father, continued to make product improvements in the kitchen range business. A breakthrough for the company was Albert's invention of a new fastening device, the "speed nut," which prevented loosening due to vibration by locking itself to a screw using spring tension. It eliminated the necessity for lock washers on bolts and dramatically reduced assembly time to secure metal pieces together by replacing riveting or welding in many applications. In the early 1920s, kitchen ranges were undergoing a major advancement with the change from combination fuel sources to solely gas, because of the widespread availability of natural gas pipes coming into homes. Manufacturers took advantage of the change to redesign kitchen ranges, introducing appliances with porcelain enamel exterior finishes. According to Albert Tinnerman, the first fasteners were produced for use on this new type of Tinnerman range. They had two advantages over previous methods: 1) eliminating the cracking of porcelain enamel stove surfaces due to over-tightened bolts and vibration during manufacture, shipment, and installation; and 2) could be concealed from view on the range exterior by being inserted through concealed flanges in the range panels. This spring tension fastener enabled Tinnerman Stove & Range Company to manufacture the first all-porcelain-enameled gas range using concealed fasteners (Figures 27-31).¹⁷

The spring tension fastener patent was issued in 1924 (Figure 32) and revolutionized assembly methods in the range industry and, ultimately, the entire fastening industry worldwide.¹⁸ For the

¹⁰ Cleveland City Directories, various years.

¹¹ "Tinnerman Adds to New Plant," *The Plain Dealer*, 6 June 1954, p. 13-C.

¹² *The Metal Worker, Plumber and Steam Fitter*, v.86, p. 661, Nov 24, 1916.

¹³ Coates, William R. *A History of Cuyahoga County and the City of Cleveland*. Vol. 3, pp. 113-115. Chicago and New York: The American Historical Society, 1924.

¹⁴ "Financial Institutions," *The Plain Dealer*, 10 May 1895, p. 18; "Mrs. Tinnerman Dies in Florida," *The Plain Dealer*, 16 March 1936, p. 6.

¹⁵ Alburn, Wilfred Henry. *This Cleveland of Ours*. Chicago: S. J. Clarke, 1933, vol. IV, pp. 773-776.

¹⁶ "Tinnerman Products Founder Dies at 82," *The Plain Dealer*, 5 September 1961, p. 34.

¹⁷ "Birthday – Albert H. Tinnerman," *The Plain Dealer*, 9 June 1943, p. 18; "Tinnerman Products Founder Dies at 82," *The Plain Dealer*, 5 September 1961, p. 34.

¹⁸ "Tinnerman Adds to New Plant," *The Plain Dealer*, 6 June 1954, p. 13-C.

Tinnerman Steel Range Company

Cuyahoga, OH

Name of Property

County and State

next fifteen years, the company pursued the manufacture of products in both the kitchen range and fastener industries. From the mid-1920s through the mid-1930s, Tinnerman obtained thirteen patents involving various aspects of stove construction, including the first oven thermostat mounted inside the oven, rather than on the exterior of the stove.

Tinnerman ranges continued to be widely sold during the 1920s and 1930s. For example, a 1920 newspaper advertisement listed more than eighty Cleveland retailers where Tinnerman ranges could be purchased.¹⁹ In addition, the ranges were marketed through downtown Cleveland department stores, including Halle Bros., Higbee's, May Company, and Sterling & Welch. In the 1929-1930 timeframe, Tinnerman ranges cost about \$140 to \$160, depending on options. During the 1930s those stores also sold kitchen ranges manufactured by Estate, Magic Chef, Round Oak, and Tappan.²⁰ Tinnerman's market area continued to be extensive, with a 1933 publication noting that Tinnerman "is now specializing in the manufacture of a high-grade gas range, marketed throughout the central states and metropolitan New York."²¹

Beginning in the mid-1930s, George A. Tinnerman II, grandson of the founder and son of Albert, successfully explored the application of the spring tension fastener to a wide range of other products. During the 1930s and 1940s, the company received at least 89 patents related to fastening devices. The rapidly expanding production of fasteners eclipsed range manufacturing, which was discontinued in 1940 when Tinnerman Products, Inc. was formed.²² To accommodate its increased production, the company expanded several times within the center of the block it occupied, such as building a 12,000 square foot addition in 1941. During 1941 through 1945, the company applied for at least 38 patents, as it developed specialty fasteners widely used in the production of U.S. military equipment such as fighter planes and bombers, trucks, jeeps, and tanks, but also specific products such as gas masks and hand grenades (Figures 33-36).

In the post-war market, the demand for spring tension fasteners grew rapidly. For example, their fastener application saved Ford Motor Company \$4,500,000 in production costs in 1950.²³ In addition to automobiles, other uses included air conditioners, refrigerators, dishwashers, fans, lighting, electronics, farm equipment, industrial heaters, office furniture, televisions, radios, and toys.²⁴ Albert Tinnerman held the positions of president and treasurer of the new corporation, and son George was vice president and general manager.²⁵ Like his father, Albert had a long association with the Lorain Street Savings & Trust, becoming its president in 1929.²⁶

¹⁹ Advertisement, *The Plain Dealer*, 17 October 1920, p. 10.

²⁰ Advertisements, *The Plain Dealer*. 12 June 1929 (May Company), 26 June 1930 (Halle Bros. Co.), 24 November 1930 (Sterling & Welch), plus 22 January 1937 (Higbee's).

²¹ Alburn, Wilfred Henry. *This Cleveland of Ours*. Chicago: S. J. Clarke, 1933, vol. IV, pp. 773-776.

²² "Stops Making Stoves," *The Plain Dealer*, 6 January 1940, p. 16.

²³ "Tinnerman Adds to New Plant," *The Plain Dealer*, 6 June 1954, p. 13-C.

²⁴ Tinnerman Products Speed Nut brand fasteners catalog, circa 1960. Private collection.

²⁵ "Stops Making Stoves," *The Plain Dealer*, 6 January 1940, p. 16.

²⁶ "Past Year One of Most Prosperous in Whole Chronicle of Local Banking," *The Plain Dealer*, 31 December 1929, p. 16.

Tinnerman Steel Range Company
Name of Property

Cuyahoga, OH
County and State

Due to the company's growth, Tinnerman Products opened a new and much larger manufacturing facility and corporate office in 1950 in Brooklyn, Ohio, a Cleveland suburb. Tinnerman Products used the Fulton Road building as a branch plant, finally closing and selling it in 1957. Several different companies have occupied the premises during the past six decades.

Conclusion

The Tinnerman Steel Range Company Building illustrates a period of almost 65 years from the late 19th through mid-20th centuries when three generations of the Tinnerman family and their industrial company created important innovations in the diverse fields of kitchen stoves and fasteners. The company's founder, George A. Tinnerman began producing kitchen ranges in the mid-1880s, as an outgrowth of his general line hardware store and sheet metalwork company dating to the 1860s. The success of the range manufactory necessitated creation of a separate business, and it was relocated to a new factory in the same neighborhood. Within fifteen years, Ohio Steel Ranges were being sold locally and throughout the country. Tinnerman obtained at least seventeen patents from the 1910s into the 1930s for improvements to kitchen range construction and operation. One patent, for a spring tension fastener to hold stove panels together without damaging the porcelain enamel exterior surface, launched a new business line that led to worldwide prominence for the company. During the 1930s and 1940s, the company received at least 89 patents related to fastening devices. During the years 1941 through 1945, the company applied for at least 38 patents, as it developed specialty fasteners widely used in the production of U.S. military equipment such as fighter planes and bombers, trucks, jeeps, and tanks, but also specific products such as gas masks and hand grenades. Marketed as the "Speed Nut," the fastener reduced assembly time and production costs and prevented the loosening of connections caused by vibration. The Speed Nut's success continued during the 1950s, with uses in items such as automobiles, air conditioners, refrigerators, dishwashers, fans, lighting, electronics, farm equipment, industrial heaters, office furniture, televisions, radios, and toys. The factory expanded several times, first for kitchen range production – ended in 1940 to focus on fastener production – and then for fastener production itself. Tinnerman's burgeoning fastener industry success, however, necessitated construction of a new manufacturing plant and corporate office in a suburban community. The Fulton Road plant in Cleveland continued to operate until closing in 1957, bringing to an end three generations of industrial innovation and production at the site.

Tinnerman Steel Range Company
Name of Property

Cuyahoga, OH
County and State

9. Major Bibliographical References

Bibliography (Cite the books, articles, and other sources used in preparing this form.)

Aerial Photos of Cuyahoga County. 1959, 1979. Cleveland Public Library Digital Collection, Cleveland, Ohio.

Alburn, Wilfred Henry. *This Cleveland of Ours*. Chicago: S. J. Clarke, 1933.

Atlas of Cleveland, Ohio. G. M. Hopkins, Co., 1881. Cleveland Public Library Digital Collection, Cleveland, Ohio.

Atlas of the City of Cleveland, Ohio. A. H. Mueller & Co., 1898. Cleveland Public Library Digital Collection, Cleveland, Ohio.

Atlas of Cuyahoga County and Cleveland, Ohio. George F. Cram & Co., 1892. Cleveland Public Library Digital Collection, Cleveland, Ohio.

Atlas of Cuyahoga County, Ohio. Titus, Simmons & Titus, 1874. Cleveland Public Library Digital Collection, Cleveland, Ohio.

Cleveland City Directories, various years.

Cleveland Historic Maps. Digital Collection, <http://peoplemaps.esri.com/cleveland/>

Cleveland Industrial Exposition catalog. Cleveland Chamber of Commerce, 1909. Cleveland Public Library Digital Collection, Cleveland, Ohio.

Cleveland Landmarks Commission, Cleveland Architects Database.

Cleveland Public Library Photograph Collection.

Coates, William R. *A History of Cuyahoga County and the City of Cleveland*. 3 vols. Chicago and New York: The American Historical Society, 1924.

Gallery of Cleveland Photographs. Cleveland Public Library Digital Collection, Cleveland, Ohio.

Google Maps.

History of the Cleveland Fire Department. Firemen's Relief Association, 1897. Cleveland Public Library Digital Collection, Cleveland, Ohio.

Tinnerman Steel Range Company
Name of Property

Cuyahoga, OH
County and State

Leading Manufacturers and Merchants of the City of Cleveland and environs. New York: International Publishing Company, 1886.

[Ohio Steel Ranges advertisement]. *Trade Register*. Vol. 18 (10) (8 March 1902).

Plat Book of the City of Cleveland. G. M. Hopkins Co., 1912, vol. 2; 1922, vol. 2. Cleveland Public Library Digital Collection, Cleveland, Ohio.

Sanborn Fire Insurance Maps, Cleveland, Ohio. 1886, vol. 2; 1891, vol. 2; 1896, vol. 2; 1912, vol. 3; 1951, vol. 3; 1952, vol. 3A. Cleveland Public Library Digital Collection, Cleveland, Ohio.

The Ohio Architect, Engineer and Builder. Cleveland Public Library Digital Collection, Cleveland, Ohio.

The Plain Dealer, various issues.

[Tinnerman, George A. retirement]. *The Metal Worker, Plumber and Steam Fitter*. Vol. 86 (24 November 1916).

United States Patent and Trademark Office. Washington, D.C. Online database.

Previous documentation on file (NPS):

- preliminary determination of individual listing (36 CFR 67) has been requested
- previously listed in the National Register
- previously determined eligible by the National Register
- designated a National Historic Landmark
- recorded by Historic American Buildings Survey # _____
- recorded by Historic American Engineering Record # _____
- recorded by Historic American Landscape Survey # _____

Primary location of additional data:

- State Historic Preservation Office
- Other State agency
- Federal agency
- Local government
- University
- Other

Name of repository: Cleveland Public Library

Tinnerman Steel Range Company
Name of Property

Cuyahoga, OH
County and State

Historic Resources Survey Number (if assigned): n/a

10. Geographical Data

Acreeage of Property 1.2

Use either the UTM system or latitude/longitude coordinates

Latitude/Longitude Coordinates

Datum if other than WGS84: _____

(enter coordinates to 6 decimal places)

- | | |
|----------------------|---------------------|
| 1. Latitude: 41.4798 | Longitude: -81.7110 |
| 2. Latitude: | Longitude: |
| 3. Latitude: | Longitude: |
| 4. Latitude: | Longitude: |

Or

UTM References

Datum (indicated on USGS map):

NAD 1927 or NAD 1983

- | | | |
|-------------|-----------------|-------------------|
| 1. Zone: 17 | Easting: 440622 | Northing: 4592074 |
| 2. Zone: | Easting: | Northing: |
| 3. Zone: | Easting: | Northing: |
| 4. Zone: | Easting : | Northing: |

Tinnerman Steel Range Company
Name of Property

Cuyahoga, OH
County and State

Verbal Boundary Description (Describe the boundaries of the property.)

Located on the west side of Fulton Road just south of Lorain Avenue, the Tinnerman Steel Range Company property (later the Tinnerman Stove & Range Company, and Tinnerman Products, Inc.) is contained on one lot known as Permanent Parcel Number 007-05-015 (Figure 1). It is further described as situated in the City of Cleveland, County of Cuyahoga, and State of Ohio, and known as being Sub Lot Number 1 in the Tinnerman Products Inc. Re-subdivision of Part of Original Brooklyn Township Lot 52 as shown by the recorded plot in Volume 41, Page 38 of Cuyahoga Map Records.

Boundary Justification (Explain why the boundaries were selected.)

The boundary follows the historic property lines of the parcel the Tinnerman Steel Range Company (later the Tinnerman Stove & Range Company, and Tinnerman Products, Inc.) occupied during the Period of Significance.

11. Form Prepared By

name/title: Heather Rudge, Historic Preservation Consultant (Rick Sicha & Marcia Moll, Consultants, S of S)

organization: Historic Preservation Group, LLC

street & number: 2425 West 11th Street, Suite 4

city or town: Cleveland state: OH zip code: 44113

e-mail: heather@hpgroup-llc.com

telephone: 216-302-3510

date: September 26, 2016

Additional Documentation

Submit the following items with the completed form:

- **Maps:** A **USGS map** or equivalent (7.5 or 15 minute series) indicating the property's location.
- **Sketch map** for historic districts and properties having large acreage or numerous resources. Key all photographs to this map.

Tinnerman Steel Range Company
Name of Property

Cuyahoga, OH
County and State

- **Additional items:** (Check with the SHPO, TPO, or FPO for any additional items.)

Photographs

Submit clear and descriptive photographs. The size of each image must be 1600x1200 pixels (minimum), 3000x2000 preferred, at 300 ppi (pixels per inch) or larger. Key all photographs to the sketch map. Each photograph must be numbered and that number must correspond to the photograph number on the photo log. For simplicity, the name of the photographer, photo date, etc. may be listed once on the photograph log and doesn't need to be labeled on every photograph.

Photo Log

Name of Property: Tinnerman Steel Range Company

City or Vicinity: Cleveland

County: Cuyahoga

State: OH

Photographer: Heather Rudge

Date Photographed: Spring 2016

Description of Photograph(s) and number, include description of view indicating direction of camera:

Photograph 1 of 44

Description: South and east (front) elevations of 1914 three-story addition facing onto Fulton Road.

Camera Direction: Northwest

Photograph 2 of 44

Description: East (front) elevation of 1914 three-story addition facing onto Fulton Road; became the street entrance to building.

Camera Direction: Northwest

Photograph 3 of 44

Description: North elevations of 1914 three-story addition.

Camera Direction: Southeast

Photograph 4 of 44

Description: North elevations of 1914 three-story addition and the original two-story Tinnerman manufacturing building.

Tinnerman Steel Range Company
Name of Property

Cuyahoga, OH
County and State

Camera Direction: Southeast

Photograph 5 of 44

Description: Detail of south elevation showing covered and replaced windows.

Camera Direction: West

Photograph 6 of 44

Description: View of the original alley entrance off W. 38th St. to the original Tinnerman manufacturing building set in the middle of the block behind adjacent residential buildings.

Camera Direction: East

Photograph 7 of 44

Description: Original alley entrance to the Tinnerman manufacturing building set in the middle of the block behind adjacent residential garages.

Camera Direction: East

Photograph 8 of 44

Description: North entrance elevation to the original Tinnerman manufacturing building and 1914 addition beyond.

Camera Direction: East

Photograph 9 of 44

Description: West elevation of Tinnerman manufacturing building abutting the rear of W. 38th St. residential properties.

Camera Direction: South

Photograph 10 of 44

Description: West and south elevations of additions to Tinnerman manufacturing building along W. 36th St.

Camera Direction: North

Photograph 11 of 44

Description: Parking lot and loading docks on south elevation of the Tinnerman manufacturing building.

Camera Direction: Northwest

Photograph 12 of 44

Description: South and east elevations of the Tinnerman manufacturing building looking up Japan Court with abutting residential buildings to the right.

Camera Direction: Northwest

Photograph 13 of 44

Description: Building entrance in south bay of 1914 three-story addition on Fulton Rd.; stair services all three floors.

Camera Direction: Southwest

Tinnerman Steel Range Company
Name of Property

Cuyahoga, OH
County and State

Photograph 14 of 44

Description: First floor of 1914 three-story addition with non-historic office buildout; typical of second and third floors.

Camera Direction: Southwest

Photograph 15 of 44

Description: First floor of 1914 three-story addition with painted boards covering the industrial steel sash windows.

Camera Direction: Southeast

Photograph 16 of 44

Description: View of structural steel framing and industrial steel sash windows along the north elevation behind a non-historic partition.

Camera Direction: North

Photograph 17 of 44

Description: View of structural steel framing and industrial steel sash windows along the north elevation behind a non-historic partition.

Camera Direction: Northeast

Photograph 18 of 44

Description: View of structural steel framing and industrial steel sash windows along the north elevation.

Camera Direction: North

Photograph 19 of 44

Description: View of freight elevator in 1914 three-story addition.

Camera Direction: Southeast

Photograph 20 of 44

Description: View of original building section with exposed structure and non-historic partitions.

Camera Direction: Southeast

Photograph 21 of 44

Description: View of two-story space in the original building section with exposed structure and industrial steel sash windows.

Camera Direction: Southwest

Photograph 22 of 44

Description: View of through connector into timber-frame addition.

Camera Direction: Southeast

Tinnerman Steel Range Company
Name of Property

Cuyahoga, OH
County and State

Photograph 23 of 44

Description: Circa 1896 addition with exposed heavy-timber construction.

Camera Direction: North

Photograph 24 of 44

Description: Circa 1896 addition with exposed heavy-timber construction and original industrial steel sash windows.

Camera Direction: Northeast

Photograph 25 of 44

Description: West addition with exposed structure and original industrial steel sash windows.

Camera Direction: Southwest

Photograph 26 of 44

Description: West addition with exposed structure and original industrial steel sash windows.

Camera Direction: South

Photograph 27 of 44

Description: West addition with exposed structure and original industrial steel sash windows on what was an exterior wall until south addition beyond was constructed.

Camera Direction: Southeast

Photograph 28 of 44

Description: South clerestory addition with exposed structure, original industrial steel sash windows, and non-historic partitions.

Camera Direction: Northeast

Photograph 29 of 44

Description: South clerestory addition with exposed structure, original industrial steel sash windows, and non-historic partitions.

Camera Direction: West

Photograph 30 of 44

Description: South clerestory addition with exposed structure and original industrial steel sash windows.

Camera Direction: North

Photograph 31 of 44

Description: South clerestory addition with exposed structure and original industrial steel sash windows.

Camera Direction: Southeast

Tinnerman Steel Range Company
Name of Property

Cuyahoga, OH
County and State

Photograph 32 of 44

Description: South clerestory addition with exposed structure and original industrial steel sash windows.

Camera Direction: North

Photograph 33 of 44

Description: Loading dock addition with exposed structure.

Camera Direction: Southeast

Photograph 34 of 44

Description: Historic stair and door between first and second floor of 1914 addition.

Camera Direction: Southwest

Photograph 35 of 44

Description: 1914 addition second floor, typical, with painted boards over windows.

Camera Direction: Southeast

Photograph 36 of 44

Description: 1914 addition second floor, typical non-historic partitions and dropped ceiling.

Camera Direction: Southwest

Photograph 37 of 44

Description: 1914 addition second floor, typical non-historic partitions and exposed ceiling.

Camera Direction: Southwest

Photograph 38 of 44

Description: 1914 addition second floor, typical non-historic partitions and dropped ceiling.

Camera Direction: North

Photograph 39 of 44

Description: 1914 addition second floor, non-historic partitions and original steel sash window.

Camera Direction: Northwest

Photograph 40 of 44

Description: Typical non-historic partitions and dropped ceiling in second floor portion of original building (connected to 1914 addition).

Camera Direction: Northwest

Photograph 41 of 44

Description: Second floor portion of original building (connected to 1914 addition) with replacement windows.

Camera Direction: West

Tinnerman Steel Range Company

Cuyahoga, OH

Name of Property

County and State

Photograph 42 of 44

Description: 1914 addition third floor, typical non-historic partitions and dropped ceiling.

Camera Direction: Northeast

Photograph 43 of 44

Description: 1914 addition third floor, typical, with painted boards over windows.

Camera Direction: Northwest

Photograph 44 of 44

Description: 1914 addition third floor, non-historic partitions and original steel sash window.

Camera Direction: Northwest

Figure Log:

Include figures on continuation pages at the end of the nomination.

Figure 1: Parcel Map (parcel indicated with star). Source: Cuyahoga Map Records, Sub Lot Number 1 in the Tinnerman Products Inc. Re-subdivision of Part of Original Brooklyn Township Lot 52, Volume 41, Page 38.

Figure 2: Context Map (added pin and L-shaped white roofing indicates building assembly).

Source: Google Maps -

<https://www.google.com/maps/place/2048+Fulton+Rd,+Cleveland,+OH+44113/@41.479899,-81.7120463,18z/data=!4m5!3m4!1s0x8830f015054e0b67:0x43b42b71f2f45766!8m2!3d41.479895!4d-81.710952>

Figure 3: 1881 map of future Tinnerman site (heavy black outline) with small residential parcels and vacant lots. Source: *City Atlas of Cleveland, Ohio, 1881, Plate 16; Cleveland Public Library Digital Collection, Cleveland, Ohio.*

Figure 4: Future Tinnerman site (outlined in black at bottom of map) still small residential parcels and vacant lots in 1886. Source: *Sanborn Fire Insurance Map, 1886, Vol. 2, Sheet 67; Cleveland Public Library Digital Collection, Cleveland, Ohio.*

Figure 5: Site of first the Tinnerman building (indicated with star) has been cleared and is vacant. Source: *Atlas of Cuyahoga County and Cleveland, Ohio, 1892, Sheet 41; Cleveland Public Library Digital Collection, Cleveland, Ohio.*

Figure 6: 1886 map corrected to 1894 shows a two-story building on the triangular lot (outlined in black) with the notation "STEEL RANGE M'F'Y". Source: *Sanborn Fire Insurance Map, 1891, Vol. 2, Sheet 67; Cleveland Public Library Digital Collection, Cleveland, Ohio.*

Figure 7: A second building, which was constructed at the same time or right after the first building (1), appears south of the original building on the south side of a narrow alley; the

Tinnerman Steel Range Company

Cuyahoga, OH

Name of Property

County and State

map shows the square, second building (2), a rectangular foundation to the south (3) with a note that it will receive a two-story addition, and houses on the adjacent parcels to the west and south. *Source: Sanborn Fire Insurance Map, 1896, Vol. 2, Sheet 139; Cleveland Public Library Digital Collection, Cleveland, Ohio.*

Figure 8: 1898 map shows the entire east half of the Tinnerman parcel between the alley and Bell (Vinton) St. built out with residential still adjacent to the west and south. *Source: Atlas of the City of Cleveland, Ohio, 1898; Cleveland Public Library Digital Collection, Cleveland, Ohio.*

Figure 9: Same mid-block building and parcel configurations; three-story addition on Fulton constructed in 1914 will replace two houses to the east of the Tinnerman parcels (labeled "SHOP"). *Source: Plat Book of the City of Cleveland, 1912, Vol. 2, Plate 11; Cleveland Public Library Digital Collection, Cleveland, Ohio.*

Figure 10: 1912 map showing Tinnerman Steel Range Co.; the two houses to the east of the triangular Tinnerman parcel will be replaced by a three-story addition on Fulton in 1914. *Source: Sanborn Fire Insurance Map, 1912, Vol. 3, Sheet 69; Cleveland Public Library Digital Collection, Cleveland, Ohio.*

Figure 11: Footprint of brick three-story addition on Fulton. *Source: Plat Book of the City of Cleveland, 1922, Vol. 2, Plate 8b; Cleveland Public Library Digital Collection, Cleveland, Ohio.*

Figure 12: Tinnerman Stove & Range Company (named changed c.1914) clearly shown with frontage on Fulton Road and the same mid-block building configurations with the connector across the alley, 1937. *Source: Cleveland Historic Maps, Digital Collection.*

Figure 13: 1937 Hopkins Map used to show alleys (Vinton Ave. SW and China Ct. SW) vacated by the City of Cleveland in 1941 to allow significant expansion of Tinnerman due to WWII manufacturing contracts. *Source: Cleveland Historic Maps, Digital Collection.*

Figure 14: 1951 map showing expansion and construction of additions and three, small free-standing buildings; the construction stopped at the vacated China Ct. SW. *Source: Sanborn Fire Insurance Map, 1951, Vol. 3, Sheet 69; Cleveland Public Library Digital Collection, Cleveland, Ohio.*

Figure 15: 1951 map showing parking (outlined in black) from the vacated alley (China Ct. SW; not shown on map) south to Chatham Ave. SW. *Source: Sanborn Fire Insurance Map, 1951, Vol. 3, Sheet 70; Cleveland Public Library Digital Collection, Cleveland, Ohio.*

Figure 16: 1952 map showing expansion and construction of additions and three, small free-standing buildings; the construction stopped at the vacated China Ct. SW. *Source: Sanborn Fire Insurance Map, 1952, Vol. 3A, Sheet 41A; Cleveland Public Library Digital Collection, Cleveland, Ohio.*

Tinnerman Steel Range Company
Name of Property

Cuyahoga, OH
County and State

Figure 17: Aerial photo of Tinnerman (outline added), 1959. *Source: Cleveland Public Library Digital Collection, Cleveland, Ohio.*

Figure 18: Aerial photo of Tinnerman (outline added), 1979. *Source: Cleveland Public Library Digital Collection, Cleveland, Ohio.*

Figure 19: Historic photo of the south and east (front) elevations of the 1914 addition on Fulton, looking northwest, date unknown. *Source: Cleveland Public Library Digital Collection, CP02759, Cleveland, Ohio.*

Figure 20: View of alley (W. 37th Place) at west boundary of Tinnerman property, looking south, 1945. *Source: Cleveland Public Library Photo Collection, BZA Case, 1945-09-26, Cleveland, Ohio.*

Figure 21: Advertisement for G. A. Tinnerman Hardware and Stove Store, 1874. *Source: Atlas of Cuyahoga County, Ohio.*

Figure 22: G. A. Tinnerman Hardware and Stove Store invoice, 1889. *Source: Private Collection.*

Figure 23: Advertisement for Tinnerman Steel Range Co., 1897. *Source: History of the Cleveland Fire Department, Cleveland Public Library Digital Collection, Cleveland, Ohio.*

Figure 24: Seattle, WA store advertisement for “Ohio Steel Ranges” made by Tinnerman Steel Range Co., 1902. *Source: Trade Register, Vol. 18 (10), p. 51, University Libraries, University of Washington,*
<http://digitalcollections.lib.washington.edu/cdm/ref/collection/advert/id/429>

Figure 25: Advertisement for Tinnerman Steel Range Co. prize-winning range at the 1909 Cleveland Industrial Exposition. *Source: The Plain Dealer, June 23, 1909, page 3.*

Figure 26: Advertisement for Tinnerman “OHIO” Ranges. *Source: The Plain Dealer, October 31, 1920, page 10.*

Figures 27 & 28: Photos of enameled stove manufactured by Tinnerman Stove & Range Co., manufactured 1926 or later. *Source: Private Collection.*

Figure 29: Photo of Tinnerman enameled stove model number badge, stove manufactured 1926 or later. *Source: Private Collection.*

Figure 30: Photo of Tinnerman enameled stove patent numbers, stove manufactured 1926 or later. *Source: Private Collection.*

Tinnerman Steel Range Company
Name of Property

Cuyahoga, OH
County and State

Figure 31: Advertisement for Tinnerman Ohio De Luxe All White Gas Range. This advertisement was published while the patent for the spring tension fastener was pending. *Source: The Plain Dealer, September 20, 1923, page 30.*

Figure 32: Portion of the "Spring Nut" patent filed by Albert H. Tinnerman. Filing Date: January 19, 1923; Issue Date: October 21, 1924, Patent 1,512,653. *Source: United States Patent and Trademark Office, Online Database, Washington, DC.*

Figure 33: Advertisement for Tinnerman Products, Inc. Speed Nut System, *Flying* magazine, August, 1943. *Source: Private Collection.*

Figure 34: Advertisement for Tinnerman Products, Inc. Speed Nuts, *Electronics* magazine, September, 1943. *Source: Private Collection.*

Figure 35: Photo of Tinnerman Products, Inc. Speed Nut Sample Plate, front, mid- to late 1940s. *Source: Private Collection.*

Figure 36: Photo of Tinnerman Products, Inc. Speed Nut Sample Plate, back, mid- to late 1940s. *Source: Private Collection.*

Paperwork Reduction Act Statement: This information is being collected for applications to the National Register of Historic Places to nominate properties for listing or determine eligibility for listing, to list properties, and to amend existing listings. Response to this request is required to obtain a benefit in accordance with the National Historic Preservation Act, as amended (16 U.S.C.460 et seq.).

Estimated Burden Statement: Public reporting burden for this form is estimated to average 100 hours per response including time for reviewing instructions, gathering and maintaining data, and completing and reviewing the form. Direct comments regarding this burden estimate or any aspect of this form to the Office of Planning and Performance Management, U.S. Dept. of the Interior, 1849 C. Street, NW, Washington, DC.

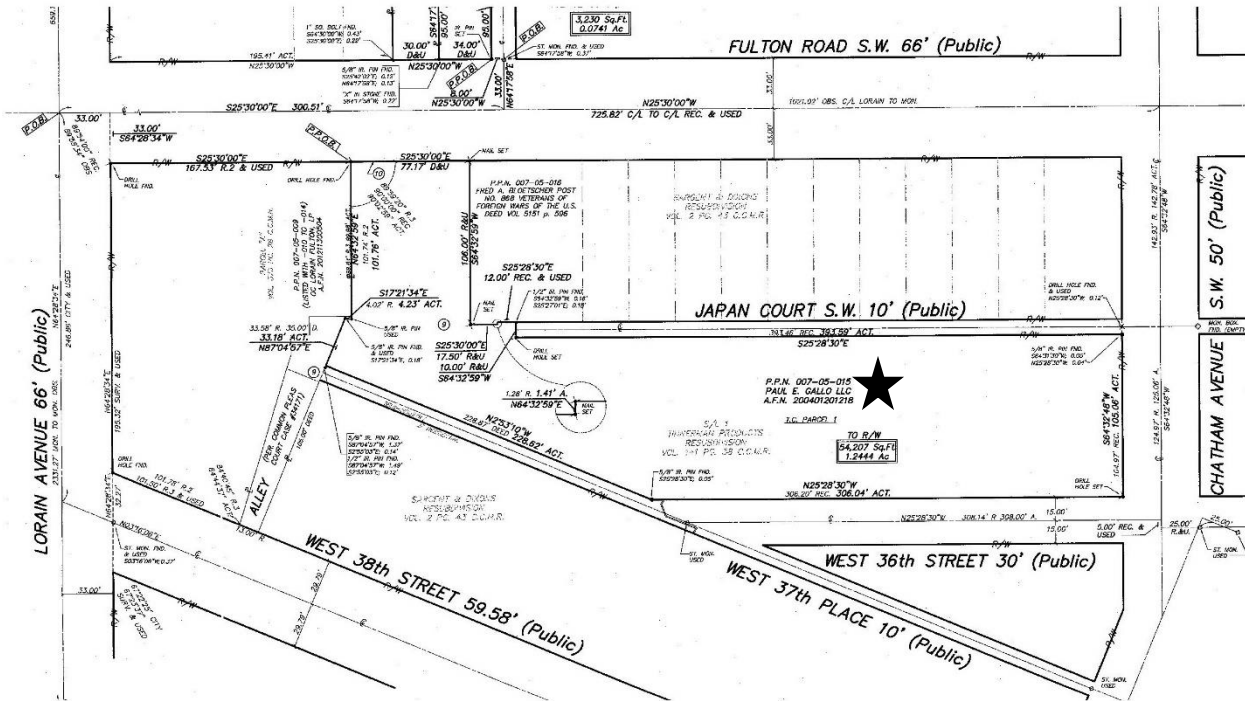
United States Department of the Interior
National Park Service

National Register of Historic Places
Continuation Sheet

Tinnerman Steel Range Company
Name of Property
Cuyahoga Co., OH
County and State
n/a
Name of multiple listing (if applicable)

Section number Figures Page 1

Figure 1: Parcel Map (parcel indicated with star). Source: Cuyahoga Map Records, Sub Lot Number 1 in the Tinnerman Products Inc. Re-subdivision of Part of Original Brooklyn Township Lot 52, Volume 41, Page 38.



United States Department of the Interior
National Park Service

National Register of Historic Places
Continuation Sheet

Tinnerman Steel Range Company

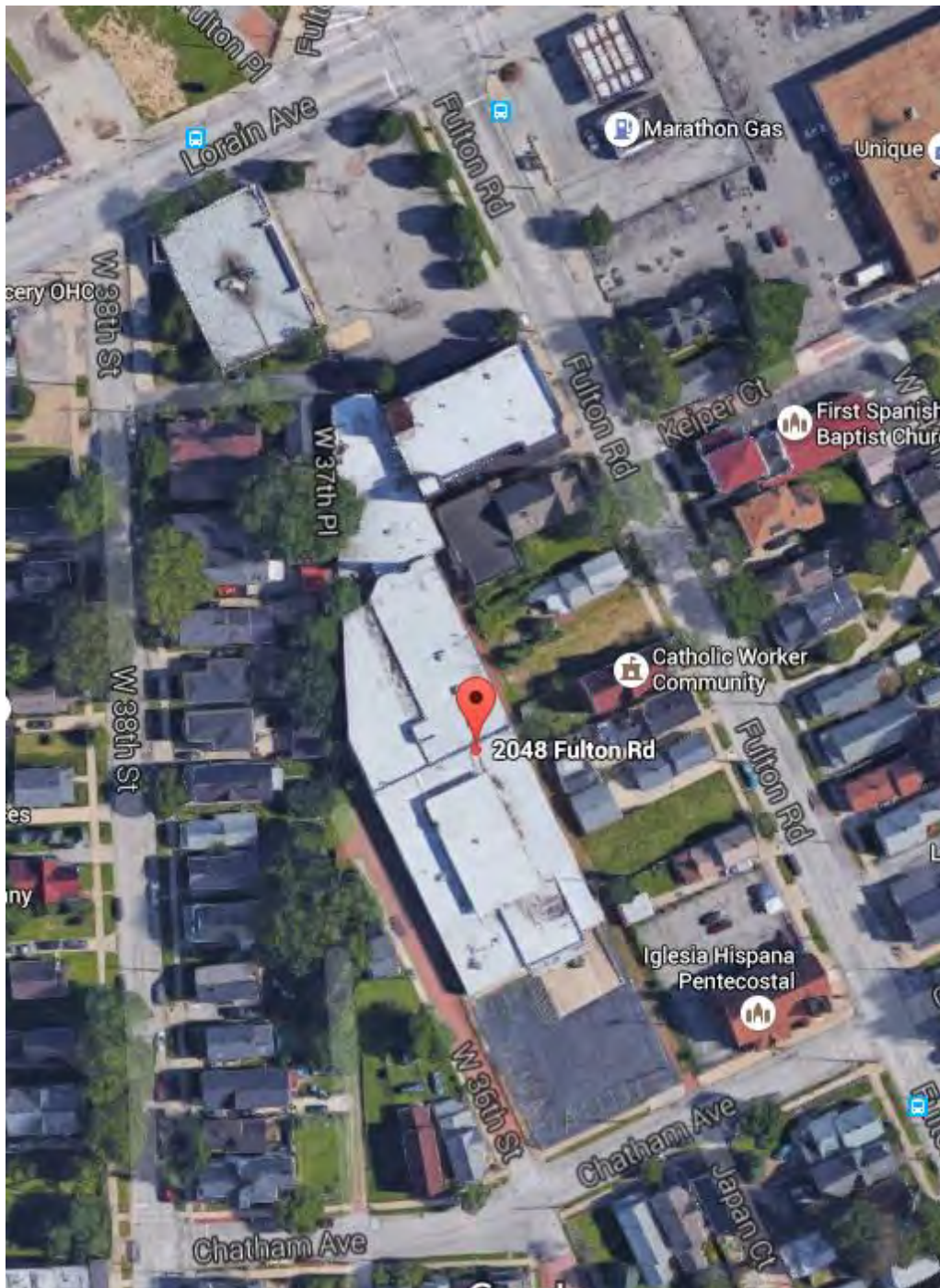
Name of Property
Cuyahoga Co., OH

County and State
n/a

Name of multiple listing (if applicable)

Section number Figures Page 2

Figure 2: Context Map (added pin and L-shaped white roofing indicates building assembly). Source: Google Maps - <https://www.google.com/maps/place/2048+Fulton+Rd,+Cleveland,+OH+44113/@41.479899,-81.7120463,18z/data=!4m5!3m4!1s0x8830f015054e0b67:0x43b42b71f2f45766!8m2!3d41.479895!4d-81.710952>



United States Department of the Interior
National Park Service

National Register of Historic Places
Continuation Sheet

Tinnerman Steel Range Company
Name of Property
Cuyahoga Co., OH
County and State
n/a
Name of multiple listing (if applicable)

Section number _____ Figures _____ Page 3

Figure 3: 1881 map of future Tinnerman site (heavy black outline) with small residential parcels and vacant lots. Source: City Atlas of Cleveland, Ohio, 1881, Plate 16; Cleveland Public Library Digital Collection, Cleveland, Ohio.



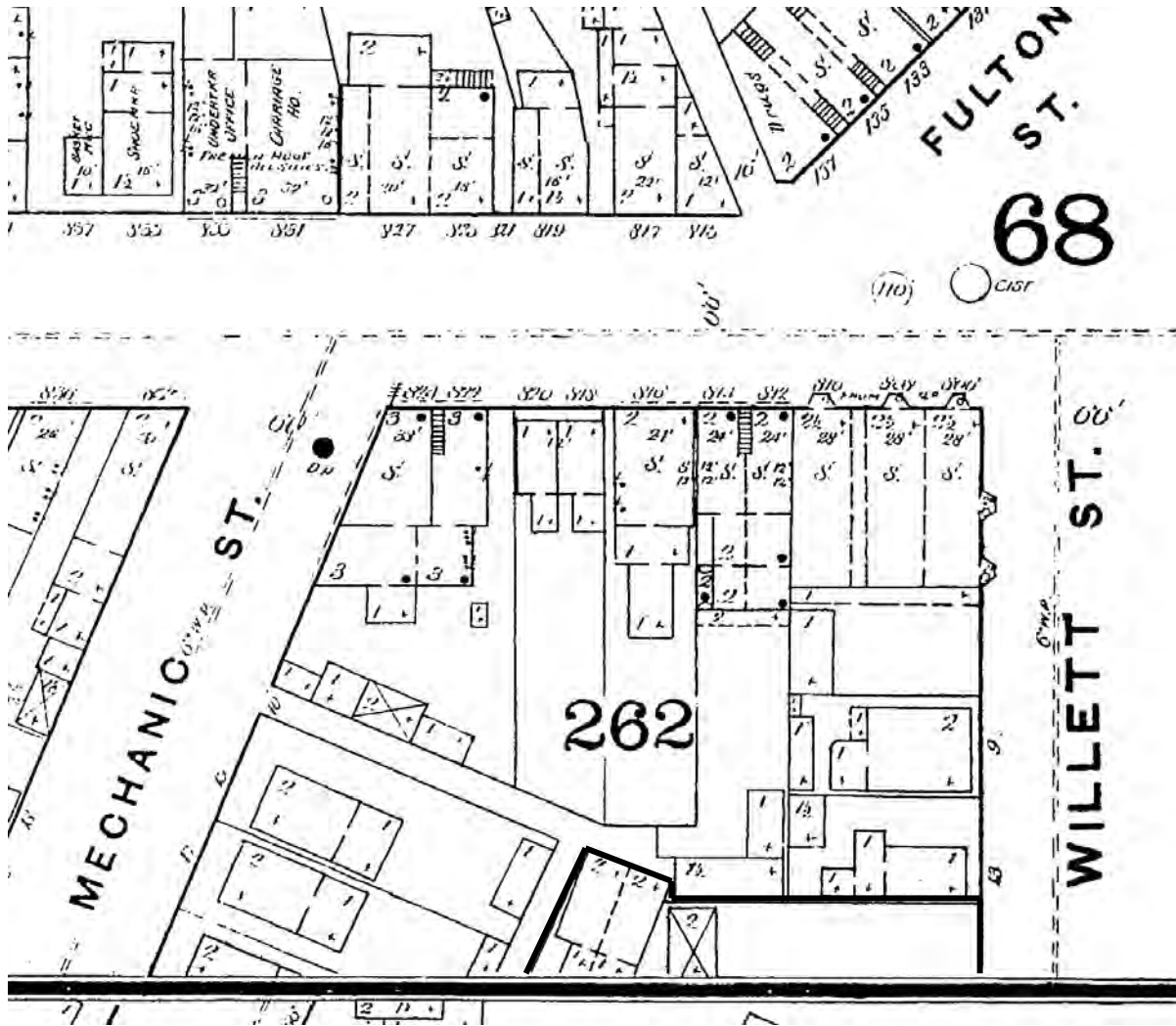
United States Department of the Interior
National Park Service

National Register of Historic Places
Continuation Sheet

Tinnerman Steel Range Company
Name of Property
Cuyahoga Co., OH
County and State
n/a
Name of multiple listing (if applicable)

Section number _____ Figures _____ Page 4

Figure 4: Future Tinnerman site (outlined in black at bottom of map) still small residential parcels and vacant lots in 1886. Source: Sanborn Fire Insurance Map, 1886, Vol. 2, Sheet 67; Cleveland Public Library Digital Collection, Cleveland, Ohio.



United States Department of the Interior
National Park Service

National Register of Historic Places Continuation Sheet

Tinnerman Steel Range Company
Name of Property
Cuyahoga Co., OH
County and State
n/a
Name of multiple listing (if applicable)

Section number Figures Page 5

Figure 5: Site of first the Tinnerman building (indicated with star) has been cleared and is vacant. *Source: Atlas of Cuyahoga County and Cleveland, Ohio, 1892, Sheet 41; Cleveland Public Library Digital Collection, Cleveland, Ohio.*



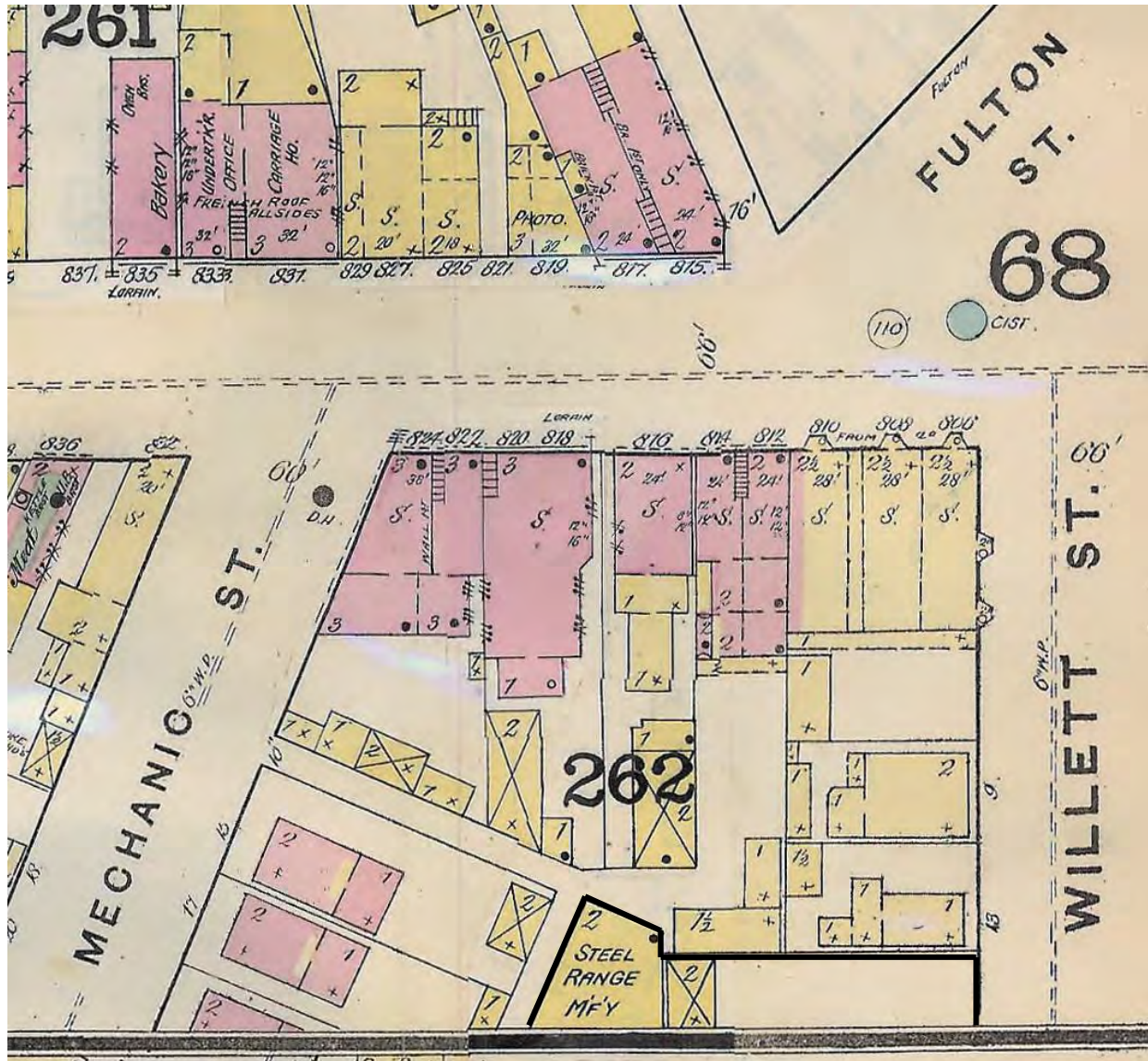
United States Department of the Interior
National Park Service

National Register of Historic Places
Continuation Sheet

Tinnerman Steel Range Company
Name of Property
Cuyahoga Co., OH
County and State
n/a
Name of multiple listing (if applicable)

Section number Figures Page 6

Figure 6: 1886 map corrected to 1894 shows a two-story building on the triangular lot (outlined in black) with the notation "STEEL RANGE M'F'Y". Source: Sanborn Fire Insurance Map, 1891, Vol. 2, Sheet 67; Cleveland Public Library Digital Collection, Cleveland, Ohio.



United States Department of the Interior
National Park Service

National Register of Historic Places
Continuation Sheet

Tinnerman Steel Range Company
Name of Property
Cuyahoga Co., OH
County and State
n/a
Name of multiple listing (if applicable)

Section number Figures Page 7

Figure 7: A second building, which was constructed at the same time or right after the first building (1), appears south of the original building on the south side of a narrow alley; the map shows the square, second building (2), a rectangular foundation to the south (3) with a note that it will receive a two-story addition, and houses on the adjacent parcels to the west and south. Source: Sanborn Fire Insurance Map, 1896, Vol. 2, Sheet 139; Cleveland Public Library Digital Collection, Cleveland, Ohio.



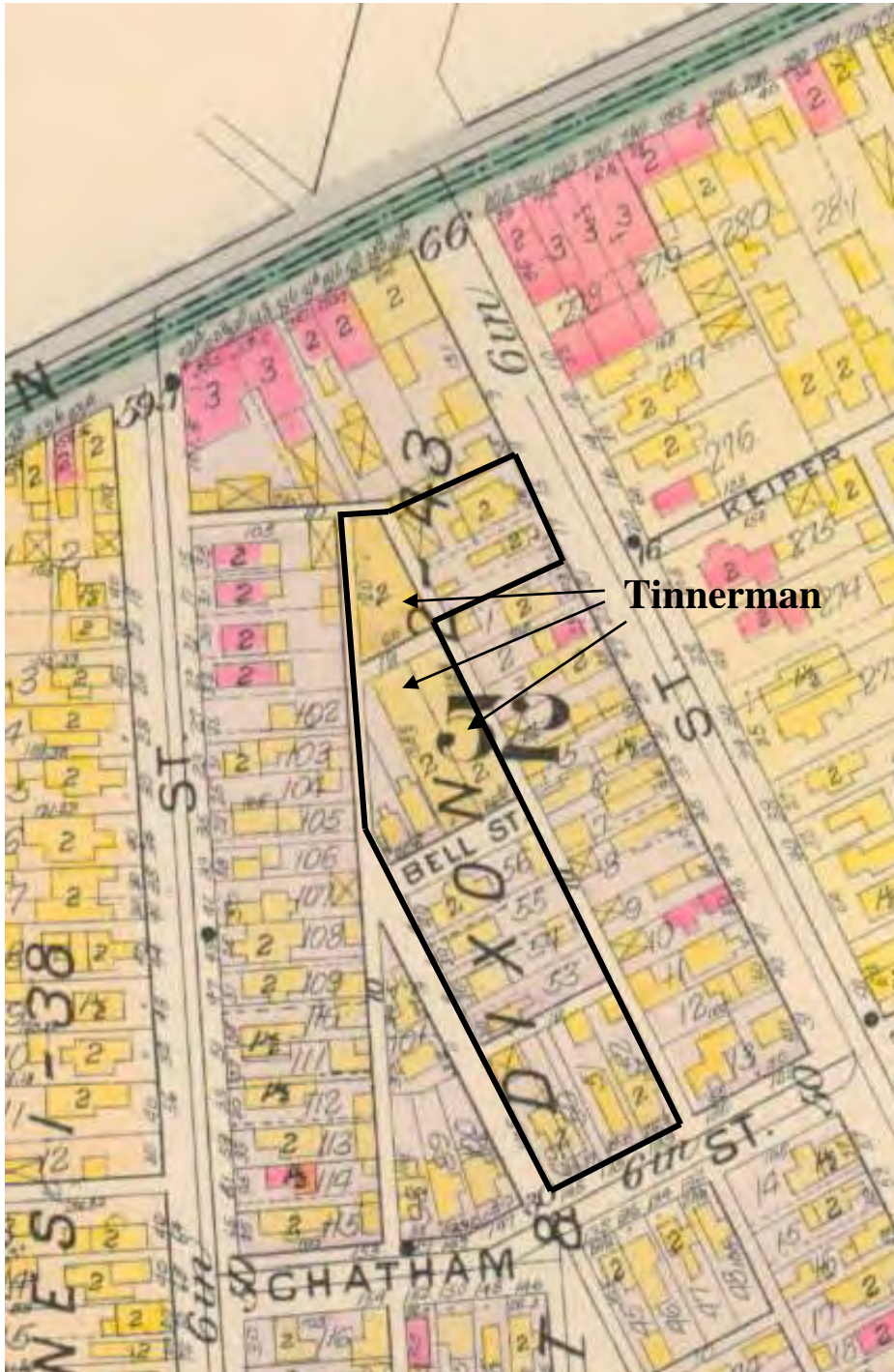
United States Department of the Interior
National Park Service

National Register of Historic Places
Continuation Sheet

Tinnerman Steel Range Company
Name of Property
Cuyahoga Co., OH
County and State
n/a
Name of multiple listing (if applicable)

Section number _____ Figures _____ Page 8

Figure 8: 1898 map shows the entire east half of the Tinnerman parcel between the alley and Bell (Vinton) St. built out with residential still adjacent to the west and south. *Source: Atlas of the City of Cleveland, Ohio, 1898; Cleveland Public Library Digital Collection, Cleveland, Ohio.*



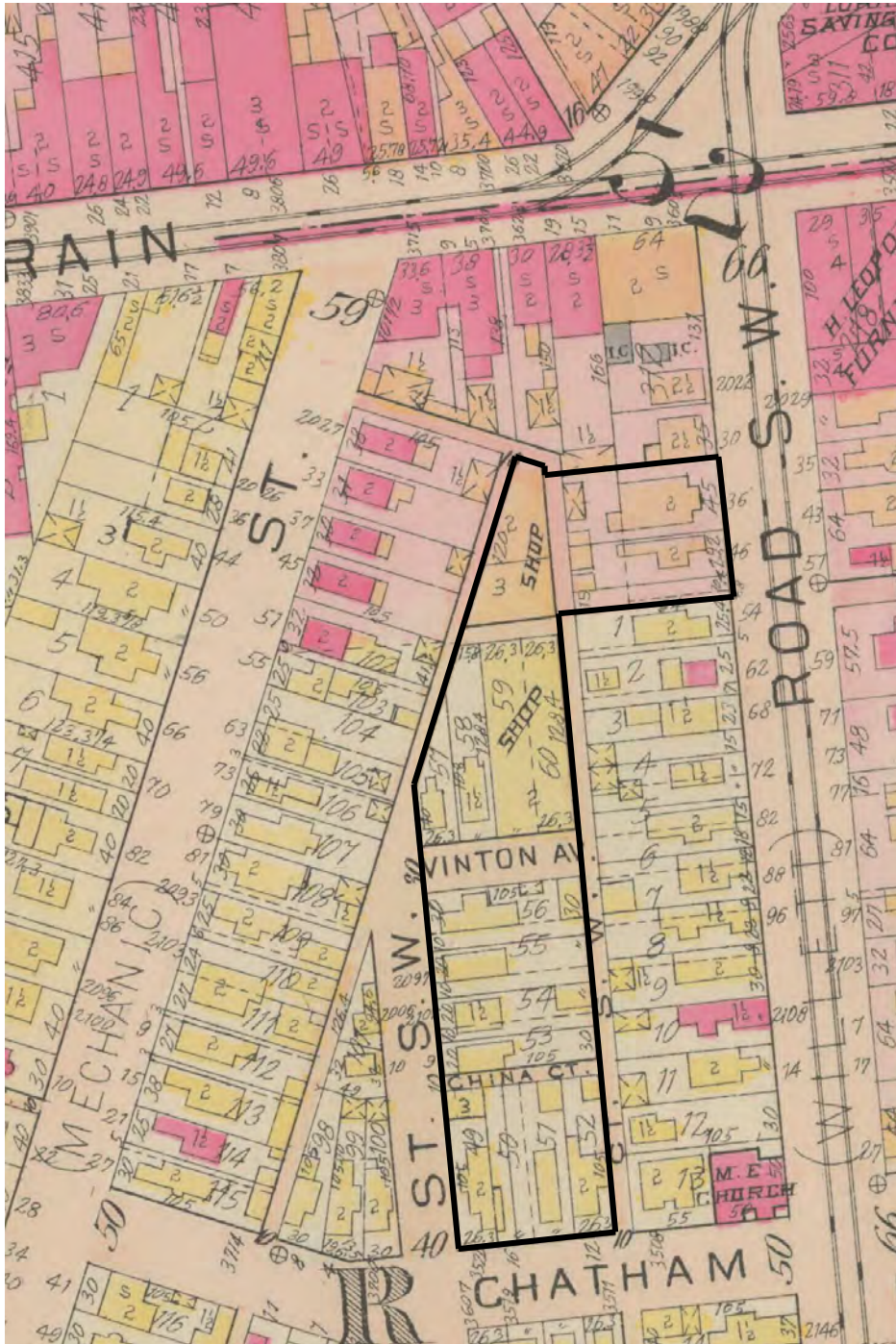
United States Department of the Interior
National Park Service

National Register of Historic Places
Continuation Sheet

Tinnerman Steel Range Company
Name of Property
Cuyahoga Co., OH
County and State
n/a
Name of multiple listing (if applicable)

Section number Figures Page 9

Figure 9: Same mid-block building and parcel configurations; three-story addition on Fulton constructed in 1914 will replace two houses to the east of the Tinnerman parcels (labeled "SHOP"). Source: Plat Book of the City of Cleveland, 1912, Vol. 2, Plate 11; Cleveland Public Library Digital Collection, Cleveland, Ohio.



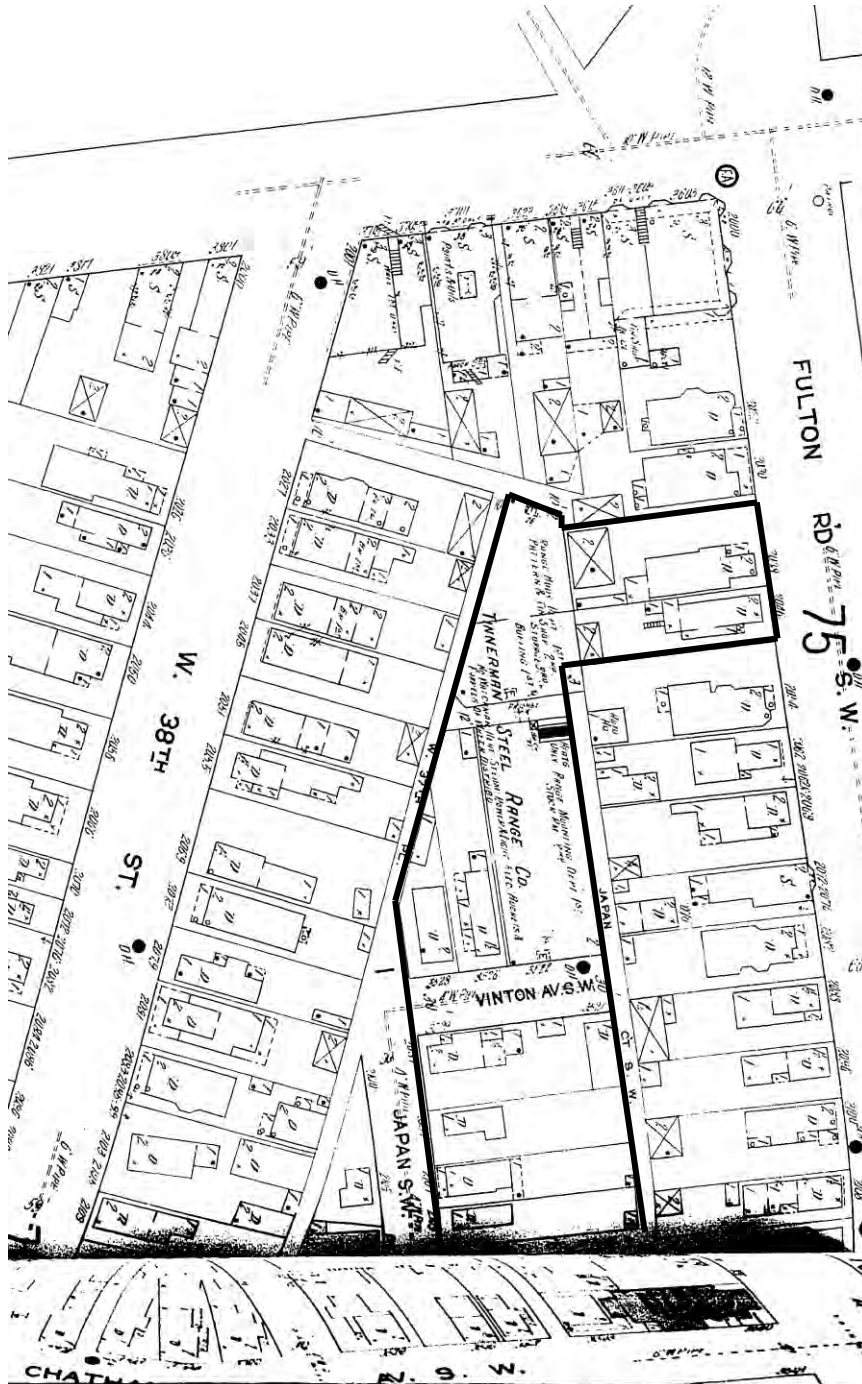
United States Department of the Interior
National Park Service

National Register of Historic Places
Continuation Sheet

Tinnerman Steel Range Company
Name of Property
Cuyahoga Co., OH
County and State
n/a
Name of multiple listing (if applicable)

Section number _____ Figures _____ Page 10

Figure 10: 1912 map showing Tinnerman Steel Range Co.; the two houses to the east of the triangular Tinnerman parcel will be replaced by a three-story addition on Fulton in 1914. Source: Sanborn Fire Insurance Map, 1912, Vol. 3, Sheet 69; Cleveland Public Library Digital Collection, Cleveland, Ohio.



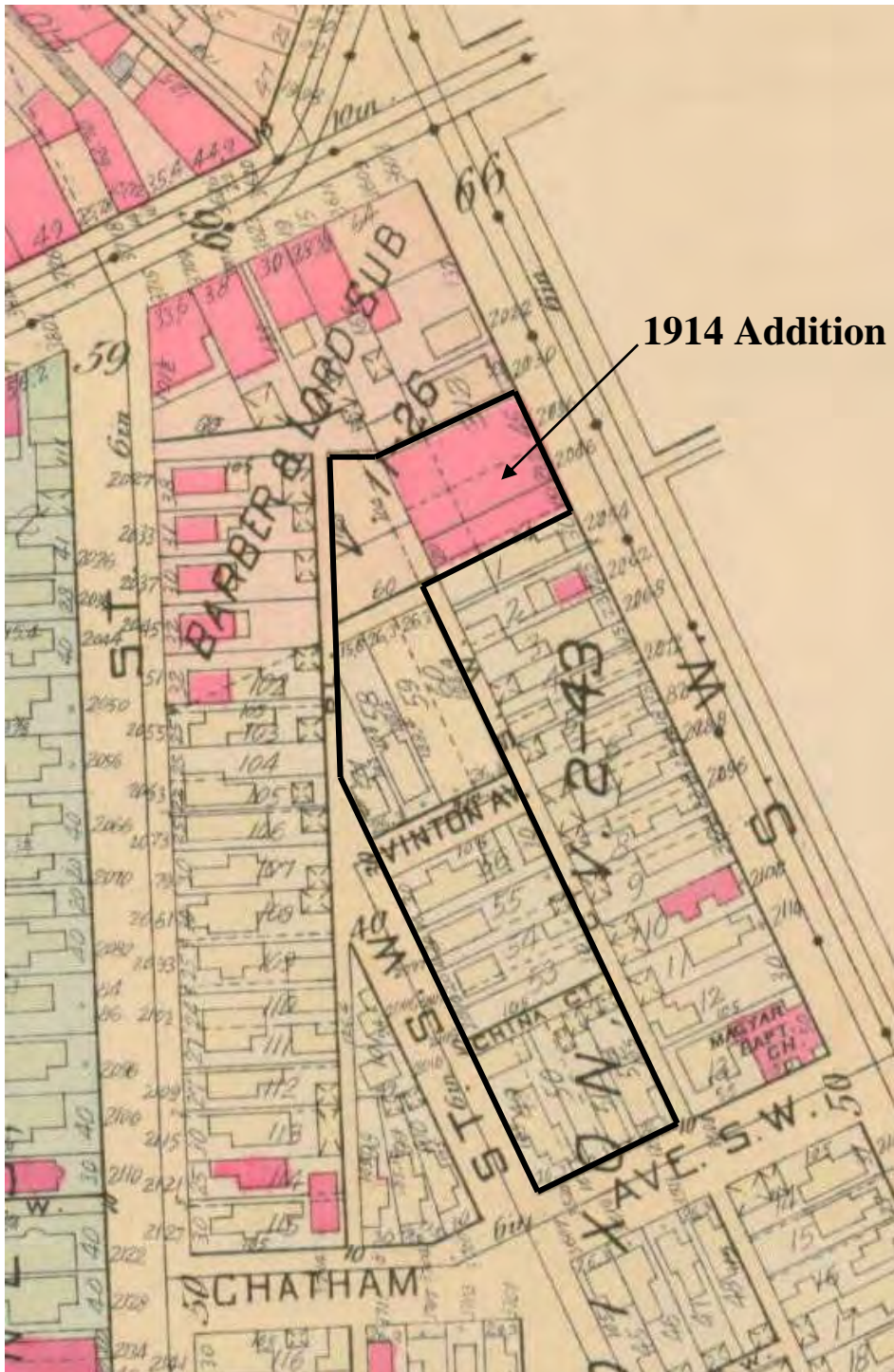
United States Department of the Interior
National Park Service

National Register of Historic Places
Continuation Sheet

Tinnerman Steel Range Company
Name of Property
Cuyahoga Co., OH
County and State
n/a
Name of multiple listing (if applicable)

Section number Figures Page 11

Figure 11: Footprint of brick three-story addition on Fulton. Source: *Plat Book of the City of Cleveland, 1922, Vol. 2, Plate 8b; Cleveland Public Library Digital Collection, Cleveland, Ohio.*



United States Department of the Interior
National Park Service

National Register of Historic Places
Continuation Sheet

Tinnerman Steel Range Company
Name of Property
Cuyahoga Co., OH
County and State
n/a
Name of multiple listing (if applicable)

Section number Figures Page 12

Figure 12: Tinnerman Stove & Range Company (named changed c.1914) clearly shown with frontage on Fulton Road and the same mid-block building configurations with the connector across the alley, 1937. Source: Cleveland Historic Maps, Digital Collection.



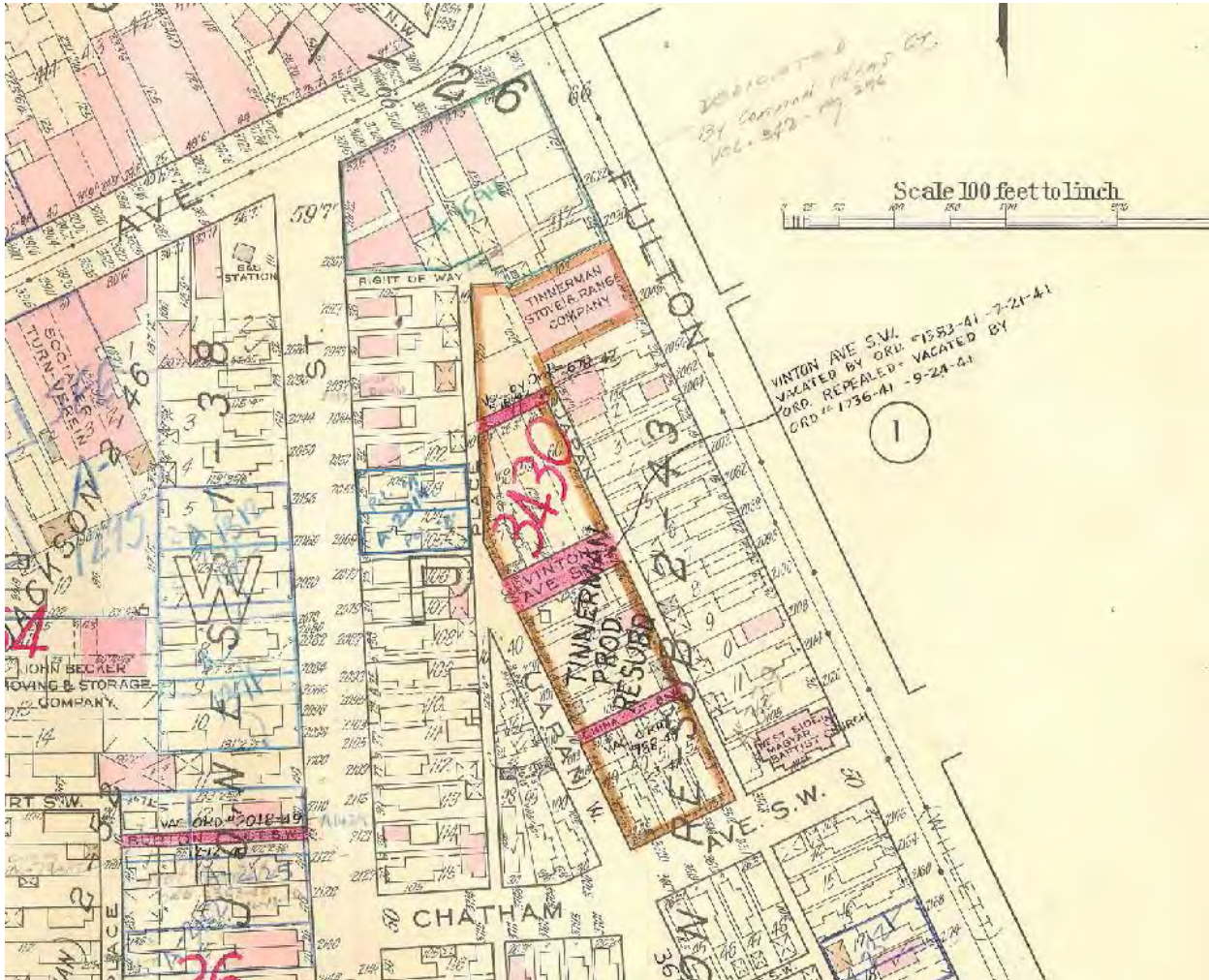
United States Department of the Interior
National Park Service

National Register of Historic Places
Continuation Sheet

Tinnerman Steel Range Company
Name of Property
Cuyahoga Co., OH
County and State
n/a
Name of multiple listing (if applicable)

Section number Figures Page 13

Figure 13: 1937 Hopkins Map used to show alleys (Vinton Ave. SW and China Ct. SW) vacated by the City of Cleveland in 1941 to allow significant expansion of Tinnerman due to WWII manufacturing contracts. Source: Cleveland Historic Maps, Digital Collection.



United States Department of the Interior
National Park Service

Timmerman Steel Range Company

Name of Property

Cuyahoga Co., OH

County and State

n/a

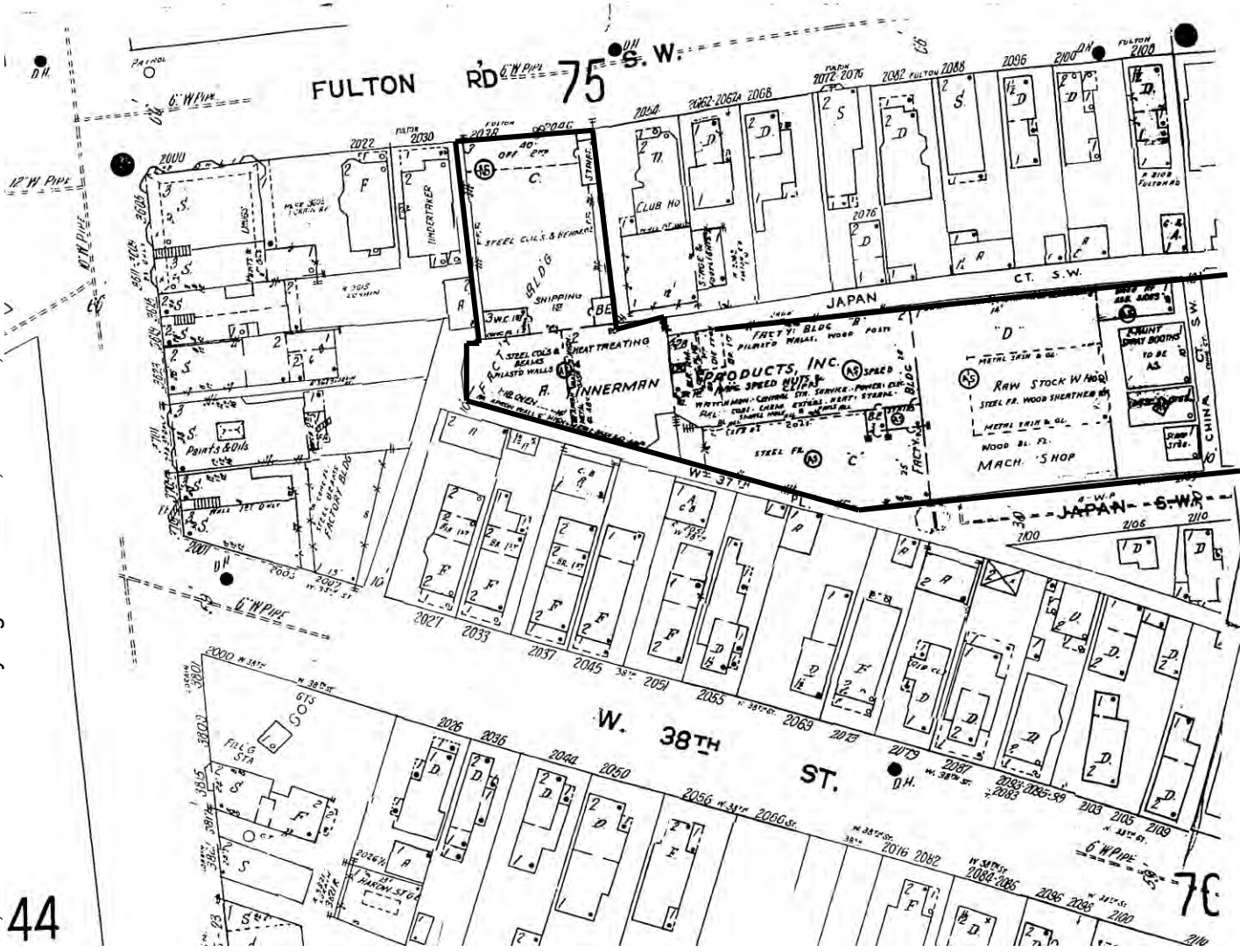
Name of multiple listing (if applicable)

National Register of Historic Places
Continuation Sheet

Section number Figures Page 14

Figure 14: 1951 map showing expansion and construction of additions and three, small free-standing buildings; the construction stopped at the vacated China Ct. SW. Source: Sanborn Fire Insurance Map, 1951, Vol. 3, Sheet 69; Cleveland Public Library Digital Collection, Cleveland, Ohio.

44



7C

United States Department of the Interior
National Park Service

National Register of Historic Places
Continuation Sheet

Tinnerman Steel Range Company

Name of Property
Cuyahoga Co., OH

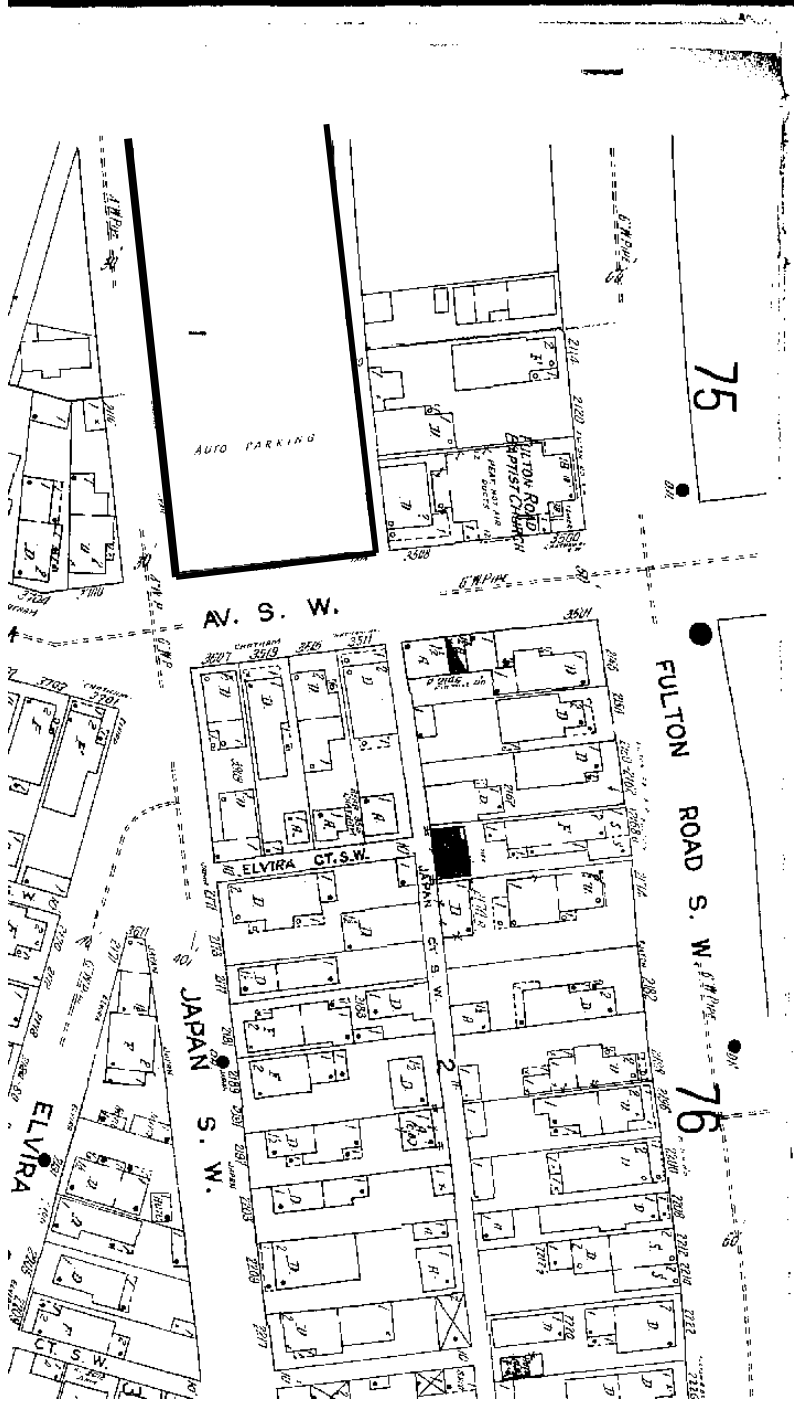
County and State

n/a

Name of multiple listing (if applicable)

Section number Figures Page 15

Figure 15: 1951 map showing parking (outlined in black) from the vacated alley (China Ct. SW; not shown on map) south to Chatham Ave. SW. Source: Sanborn Fire Insurance Map, 1951, Vol. 3, Sheet 70; Cleveland Public Library Digital Collection, Cleveland, Ohio.



United States Department of the Interior
National Park Service

National Register of Historic Places
Continuation Sheet

Tinnerman Steel Range Company
Name of Property
Cuyahoga Co., OH
County and State
n/a
Name of multiple listing (if applicable)

Section number Figures Page 16

Figure 16: 1952 map showing expansion and construction of additions and three, small free-standing buildings; the construction stopped at the vacated China Ct. SW. Source: Sanborn Fire Insurance Map, 1952, Vol. 3A, Sheet 41A; Cleveland Public Library Digital Collection, Cleveland, Ohio.



United States Department of the Interior
National Park Service

National Register of Historic Places
Continuation Sheet

Tinnerman Steel Range Company
Name of Property
Cuyahoga Co., OH
County and State
n/a
Name of multiple listing (if applicable)

Section number Figures Page 17

Figure 17: Aerial photo of Tinnerman (outline added), 1959. *Source: Cleveland Public Library Digital Collection, Cleveland, Ohio.*



United States Department of the Interior
National Park Service

National Register of Historic Places
Continuation Sheet

Tinnerman Steel Range Company

Name of Property
Cuyahoga Co., OH

County and State
n/a

Name of multiple listing (if applicable)

Section number Figures Page 18

Figure 18: Aerial photo of Tinnerman (outline added), 1979. *Source: Cleveland Public Library Digital Collection, Cleveland, Ohio.*



United States Department of the Interior
National Park Service

National Register of Historic Places
Continuation Sheet

Tinnerman Steel Range Company
Name of Property
Cuyahoga Co., OH
County and State
n/a
Name of multiple listing (if applicable)

Section number Figures Page 19

Figure 19: Historic photo of the south and east (front) elevations of the 1914 addition on Fulton, looking northwest, date unknown. *Source: Cleveland Public Library Digital Collection, CP02759, Cleveland, Ohio.*



United States Department of the Interior
National Park Service

National Register of Historic Places
Continuation Sheet

Tinnerman Steel Range Company
Name of Property
Cuyahoga Co., OH
County and State
n/a
Name of multiple listing (if applicable)

Section number Figures Page 20

Figure 20: View of alley (W. 37th Place) at west boundary of Tinnerman property, looking south, 1945. *Source: Cleveland Public Library Photo Collection, BZA Case, 1945-09-26, Cleveland, Ohio.*



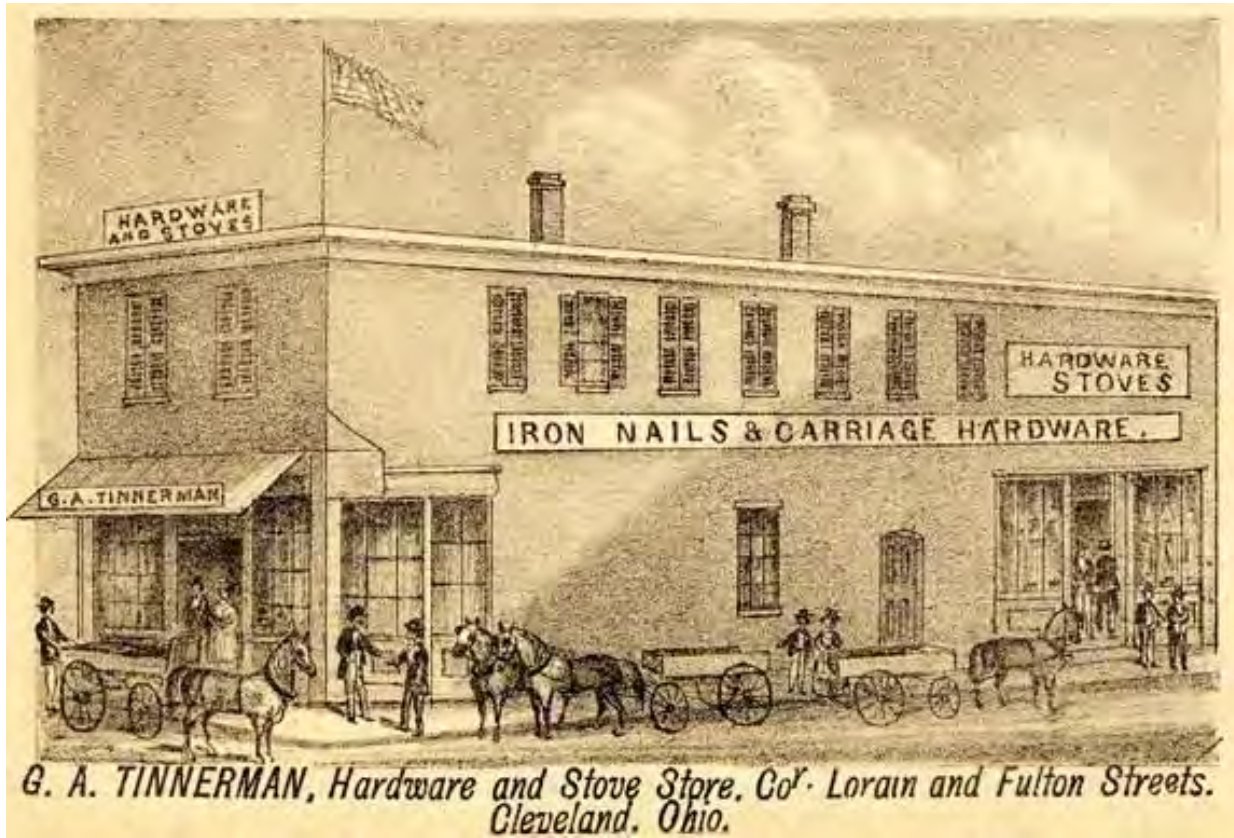
United States Department of the Interior
National Park Service

National Register of Historic Places
Continuation Sheet

Tinnerman Steel Range Company
Name of Property
Cuyahoga Co., OH
County and State
n/a
Name of multiple listing (if applicable)

Section number Figures Page 21

Figure 21: Advertisement for G. A. Tinnerman Hardware and Stove Store, 1874. Source: Atlas of Cuyahoga County, Ohio.



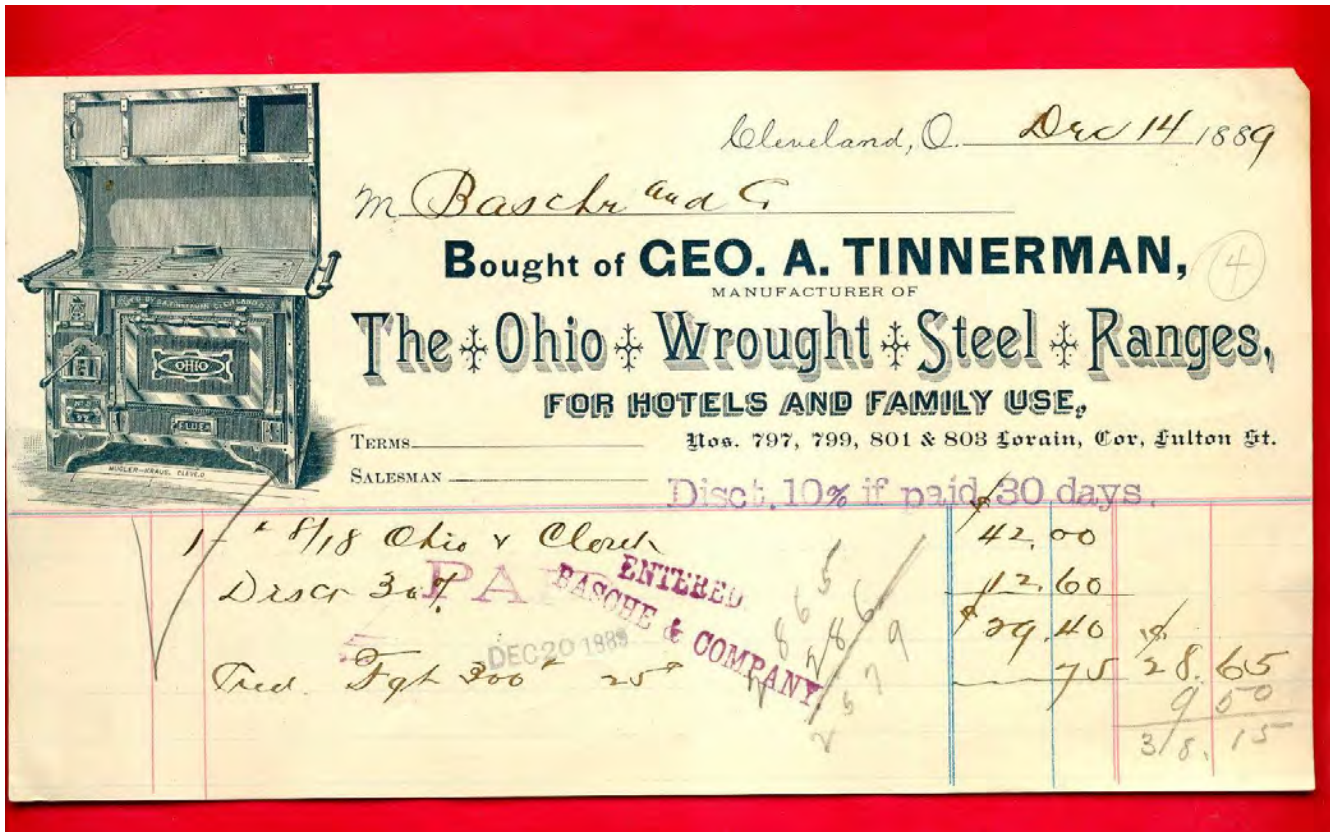
United States Department of the Interior
National Park Service

National Register of Historic Places
Continuation Sheet

Tinnerman Steel Range Company
Name of Property
Cuyahoga Co., OH
County and State
n/a
Name of multiple listing (if applicable)

Section number Figures Page 22

Figure 22: G. A. Tinnerman Hardware and Stove Store invoice, 1889. Source: Private Collection.



United States Department of the Interior
National Park Service

National Register of Historic Places
Continuation Sheet

Tinnerman Steel Range Company
Name of Property
Cuyahoga Co., OH
County and State
n/a
Name of multiple listing (if applicable)

Section number Figures Page **23**

Figure 23: Advertisement for Tinnerman Steel Range Co., 1897. *Source: History of the Cleveland Fire Department, Cleveland Public Library Digital Collection, Cleveland, Ohio.*



Tinnerman
Steel Range Co.

G. A. TINNERTAN, Prop.

MANUFACTURERS OF
THE CELEBRATED

“Ohio” STEEL ..
..RANGE

For Family, Restaurant and
Hotel Purposes.

799 LORAIN STREET
AND
130 FULTON STREET.

United States Department of the Interior
National Park Service

National Register of Historic Places
Continuation Sheet

Tinnerman Steel Range Company

Name of Property
Cuyahoga Co., OH
County and State

n/a
Name of multiple listing (if applicable)

Section number Figures Page 24

Figure 24: Seattle, WA store advertisement for "Ohio Steel Ranges" made by Tinnerman Steel Range Co., 1902.
Source: *Trade Register*, Vol. 18 (10), p. 51, University Libraries, University of Washington,
<http://digitalcollections.lib.washington.edu/cdm/ref/collection/advert/id/429>

We are now in position to fill all orders for

OHIO STEEL RANGES

promptly.

NONE BETTER MADE

Z. C. MILES & PIPER CO.

WHOLESALERS
1021-1023 FIRST AVE.
SEATTLE

 The Largest Stove House in the Northwest.

United States Department of the Interior
National Park Service

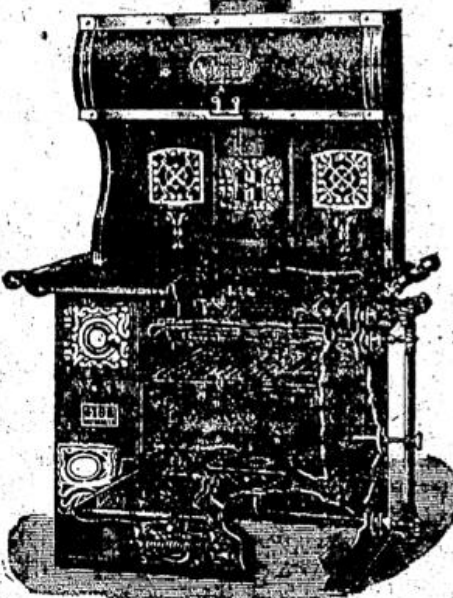
National Register of Historic Places
Continuation Sheet

Tinnerman Steel Range Company
Name of Property
Cuyahoga Co., OH
County and State
n/a
Name of multiple listing (if applicable)

Section number _____ Figures _____ Page 25

Figure 25: Advertisement for Tinnerman Steel Range Co. prize-winning range at the 1909 Cleveland Industrial Exposition. Source: *The Plain Dealer*, June 23, 1909, page 3.

PRIZE WINNERS
- OF THE -
Five Ohio Combined Coal and Gas Ranges
Exhibited at the Industrial Exposition by
The TINNEMAN STEEL RANGE Co.



The only perfect Coal and Gas Range on the market.

Insist on seeing this practical and economical range before placing your order.

No. 9313—Miss Hebbing, 1949 54th-st., N. W.
No. 2433—Frank Vitcha, 5028 Glazier-av.
No. 861—Wm. J. Slavin, 7908 Clark-av.
No. 16161—Mrs. H. L. Cole, Ravenna, O.
No. 17329—Mrs. Philippina Bechler, 2132 Hamilton-av.

Demonstrated Daily by the Following Dealers:

Skinner & Richards, Collinwood, O.	East Madison Furniture Co., 2759 E. 79th-st.
The Stoneman Co., 5126 Woodland-av.	John W. Moses, 8760 Broadway.
M. F. Broz, 4842 Broadway.	J. J. Petro, 9011 Buckeye-rd.
Chapman & Pierce, 12207 Euclid.	August F. Reese, 3127 Clark-av.
F. S. Ingersoll, Rocky River, O.	Spear Sample Furn. Co., 116 High.
Phil J. Wuertz, 2601 St. Clair-av.	W. C. Whitworth, 8010 Superior.
Herman J. Zern, 6622 St. Clair-av.	Seltzer & Stroock, 2030 W. 25th-st.

United States Department of the Interior
National Park Service

National Register of Historic Places
Continuation Sheet

Tinnerman Steel Range Company
Name of Property
Cuyahoga Co., OH
County and State
n/a
Name of multiple listing (if applicable)

Section number Figures Page 26

Figures 26: Advertisement for Tinnerman "OHIO" Ranges. Source: *The Plain Dealer*, October 31, 1920, page 10.

**Tinnerman "OHIO" Ranges
Give Perfect Service
TO THE ENTIRE FAMILY!**

What is more satisfying than a perfectly cooked, wholesome meal; Is there anything more discouraging to the housewife than failure in COOKING and BAKING results, due to a poor operating range? TINNERMAN "OHIO" RANGES are INSUR-

ANCE against all worries about gas or coal shortages or any other condition that may arise. If both gas and coal are not available you can burn *wood, coke, empty boxes or the BACK FENCE.*

There are many good combination ranges, but we claim the "OHIO" to be KING OF THEM ALL.

Tinnerman "Ohio" Ranges are perfect working in every particular, made of the best materials by skilled workmen who take pride in their work. Nothing has been spared to make the "Ohio" the

BEST COMBINATION RANGE ON THE MARKET

Tinnerman "Ohios" are made in many styles and sizes to meet every requirement.

Made also in beautiful BLUE or GRAY enameled finishes, which are properly insulated, so that they will not PEEL or BLISTER from the heat. PLAY SAFE. Investigate the "Ohio." We can CONVINCe YOU.

Phone for information and name of nearest dealer.

Lincoln 1685 DO IT NOW! Lorain 945W

Tinnerman Stove & Range Company
2038 Fulton Road
Cleveland (Fifth City)

United States Department of the Interior
National Park Service

National Register of Historic Places
Continuation Sheet

Tinnerman Steel Range Company
Name of Property
Cuyahoga Co., OH
County and State
n/a
Name of multiple listing (if applicable)

Section number Figures Page 27

Figures 27 & 28: Photo of Tinnerman enameled stove manufactured by Tinnerman Stove & Range Co., manufactured 1926 or later. *Source: Private Collection.*



United States Department of the Interior
National Park Service

National Register of Historic Places
Continuation Sheet

Tinnerman Steel Range Company
Name of Property
Cuyahoga Co., OH
County and State
n/a
Name of multiple listing (if applicable)

Section number Figures Page 28

Figure 29: Photo of Tinnerman enameled stove model number badge, stove manufactured 1926 or later. *Source: Private Collection.*



United States Department of the Interior
National Park Service

National Register of Historic Places
Continuation Sheet

Tinnerman Steel Range Company
Name of Property
Cuyahoga Co., OH
County and State
n/a
Name of multiple listing (if applicable)

Section number Figures Page 29

Figure 30: Photo of Tinnerman enameled stove patent numbers, stove manufactured 1926 or later. *Source: Private Collection.*



United States Department of the Interior
National Park Service

National Register of Historic Places
Continuation Sheet

Tinnerman Steel Range Company
Name of Property
Cuyahoga Co., OH
County and State
n/a
Name of multiple listing (if applicable)

Section number _____ Figures _____ Page _____ 30 _____

Figure 31: Advertisement for Tinnerman Ohio De Luxe All White Gas Range. This advertisement was published while the patent for the spring tension fastener was pending. Source: *The Plain Dealer*, September 20, 1923, page 30.

Tinnerman Ohio De Luxe



All White Gas Range

The Range of Many
Refinements

With *Concealed*
Oven Heat Control

50%^c Finer Than Any on the Market

No bolts
No raw edges
No rough corners

SANITARY

Don't buy until you have seen it.

AT ALL DEALERS
TINNERMAN STOVE & RANGE CO.
2038 Fulton Road—City

United States Department of the Interior
National Park Service

National Register of Historic Places
Continuation Sheet

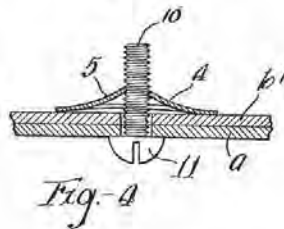
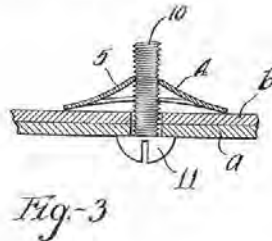
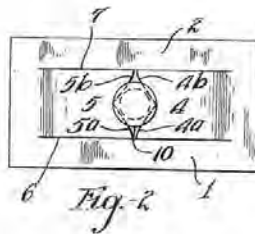
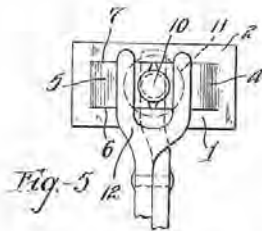
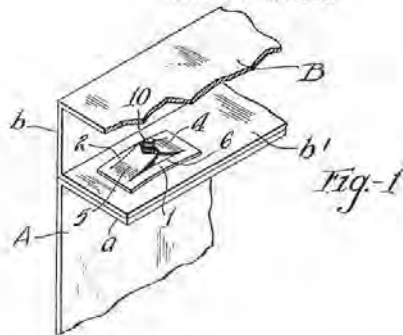
Tinnerman Steel Range Company
Name of Property
Cuyahoga Co., OH
County and State
n/a
Name of multiple listing (if applicable)

Section number Figures Page 31

Figure 32: Portion of the "Spring Nut" patent filed by Albert H. Tinnerman. Filing Date: January 19, 1923; Issue Date: October 21, 1924, Patent 1,512,653. Source: United States Patent and Trademark Office, Online Database, Washington, DC.

Oct. 21, 1924. 1,512,653

A. H. TINNEMAN
SPRING NUT
Filed Jan. 19, 1923



INVENTOR
Albert H. Tinnerman
BY: Bate & Machlin
ATTYS.

United States Department of the Interior
National Park Service

National Register of Historic Places
Continuation Sheet

Tinnerman Steel Range Company
Name of Property
Cuyahoga Co., OH
County and State
n/a
Name of multiple listing (if applicable)

Section number Figures Page 32

Figure 33: Advertisement for Tinnerman Products, Inc. Speed Nut System, *Flying* magazine, August, 1943.
Source: *Private Collection*.



United States Department of the Interior
National Park Service

National Register of Historic Places
Continuation Sheet

Tinnerman Steel Range Company

Name of Property
Cuyahoga Co., OH

County and State
n/a

Name of multiple listing (if applicable)

Section number Figures Page 33

Figure 34: Advertisement for Tinnerman Products, Inc. Speed Nuts, *Electronics* magazine, September, 1943.
Source: *Private Collection*.

More BOMBERS and FIGHTERS...

are on their way with NEW
Speed Nuts

Every day bombers and fighters are assembled with more and more SPEED NUTS. The increased use of SPEED NUTS rolls them off the line faster and tightens them for added useful load. These approved self-locking aircraft nuts grip the screws with a DOUBLE-SPRING-TENSION LOCK that resists vibration for the life of the plane.

The tons of metal conserved with the use of SPEED NUTS is almost impossible to calculate. And the man-hours assembly time saved runs into millions. Over 1,500 shapes and sizes including every new one just released. Approved for most all non-structural attachments by U. S. Army Air Forces and Navy Department Bureau of Aeronautics. Also used on trucks, jeeps and tanks. Write for our new book No. 185, illustrating some of our very latest developments.

TINNERMAN PRODUCTS INC., 2106 Fulton Road, Cleveland, Ohio
IN CANADA: Waltham Screw Co., Ltd., Hamilton, Ontario IN ENGLAND: Dennis Aerostatics, Ltd., London

FASTEST THING IN FASTENING!

United States Department of the Interior
National Park Service

National Register of Historic Places
Continuation Sheet

Tinnerman Steel Range Company
Name of Property
Cuyahoga Co., OH
County and State
n/a
Name of multiple listing (if applicable)

Section number Figures Page 34

Figure 35: Photo of Tinnerman Products, Inc. Speed Nut Sample Plate, front, mid- to late-1940s. Source: Private Collection.



United States Department of the Interior
National Park Service

National Register of Historic Places
Continuation Sheet

Tinnerman Steel Range Company
Name of Property
Cuyahoga Co., OH
County and State
n/a
Name of multiple listing (if applicable)

Section number Figures Page 35

Figure 36: Photo of Tinnerman Products, Inc. Speed Nut Sample Plate, back, mid- to late-1940s. Source: Private Collection.

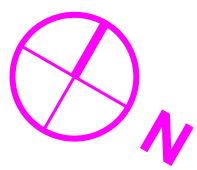
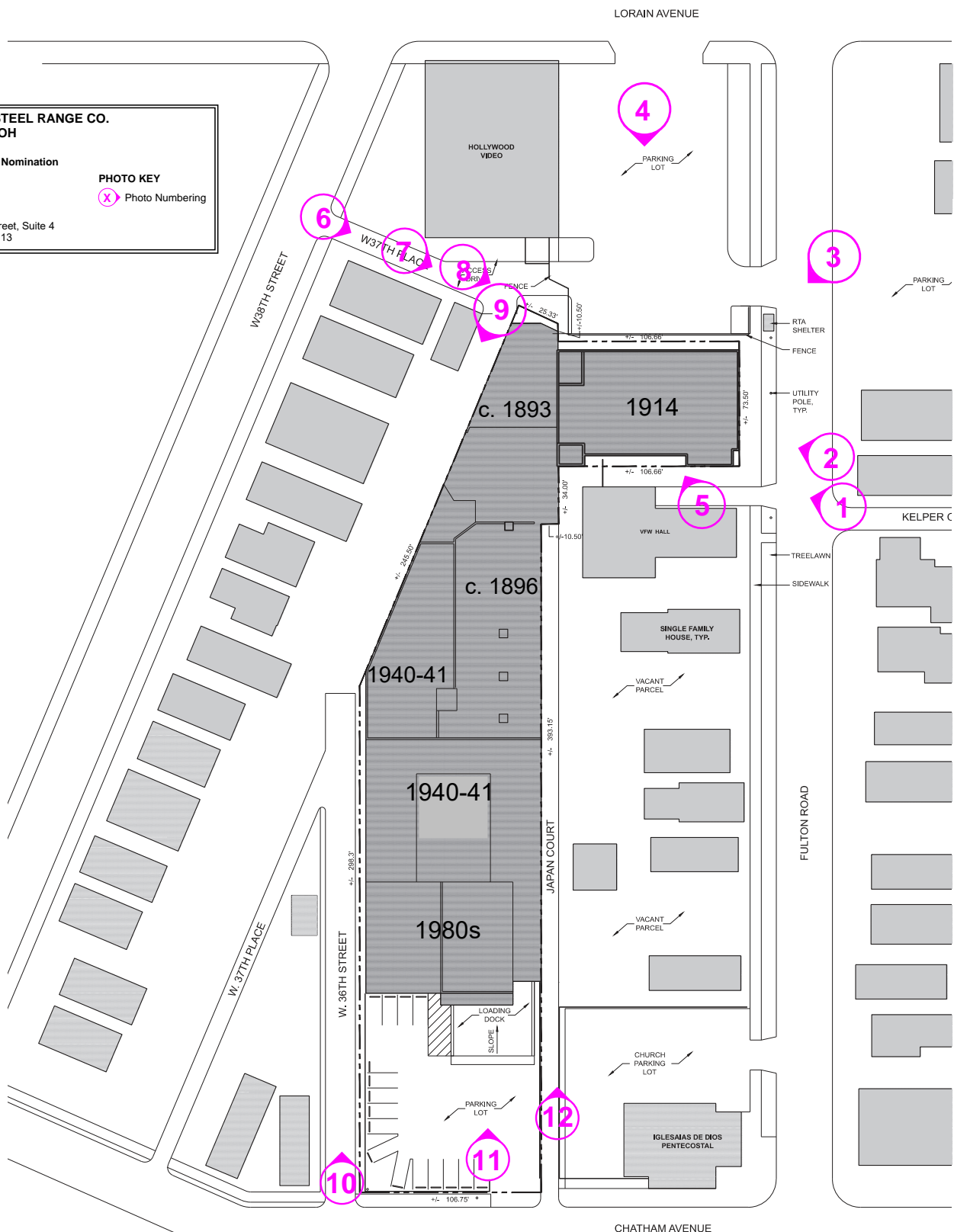


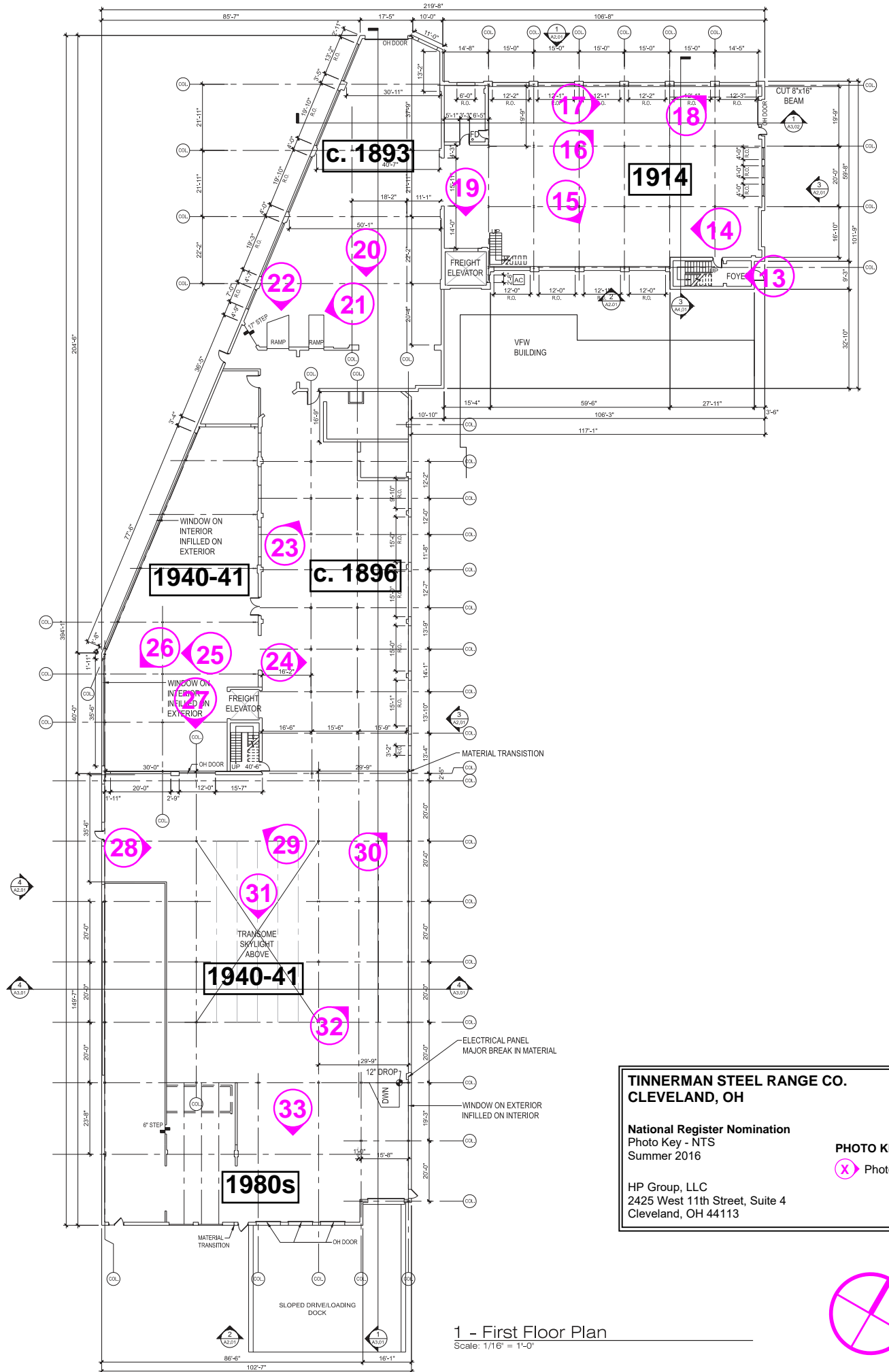
**TINNERMAN STEEL RANGE CO.
CLEVELAND, OH**

National Register Nomination
Photo Key - NTS
Summer 2016

PHOTO KEY
X Photo Numbering

HP Group, LLC
2425 West 11th Street, Suite 4
Cleveland, OH 44113





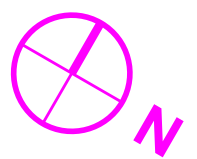
**TINNERMAN STEEL RANGE CO.
CLEVELAND, OH**

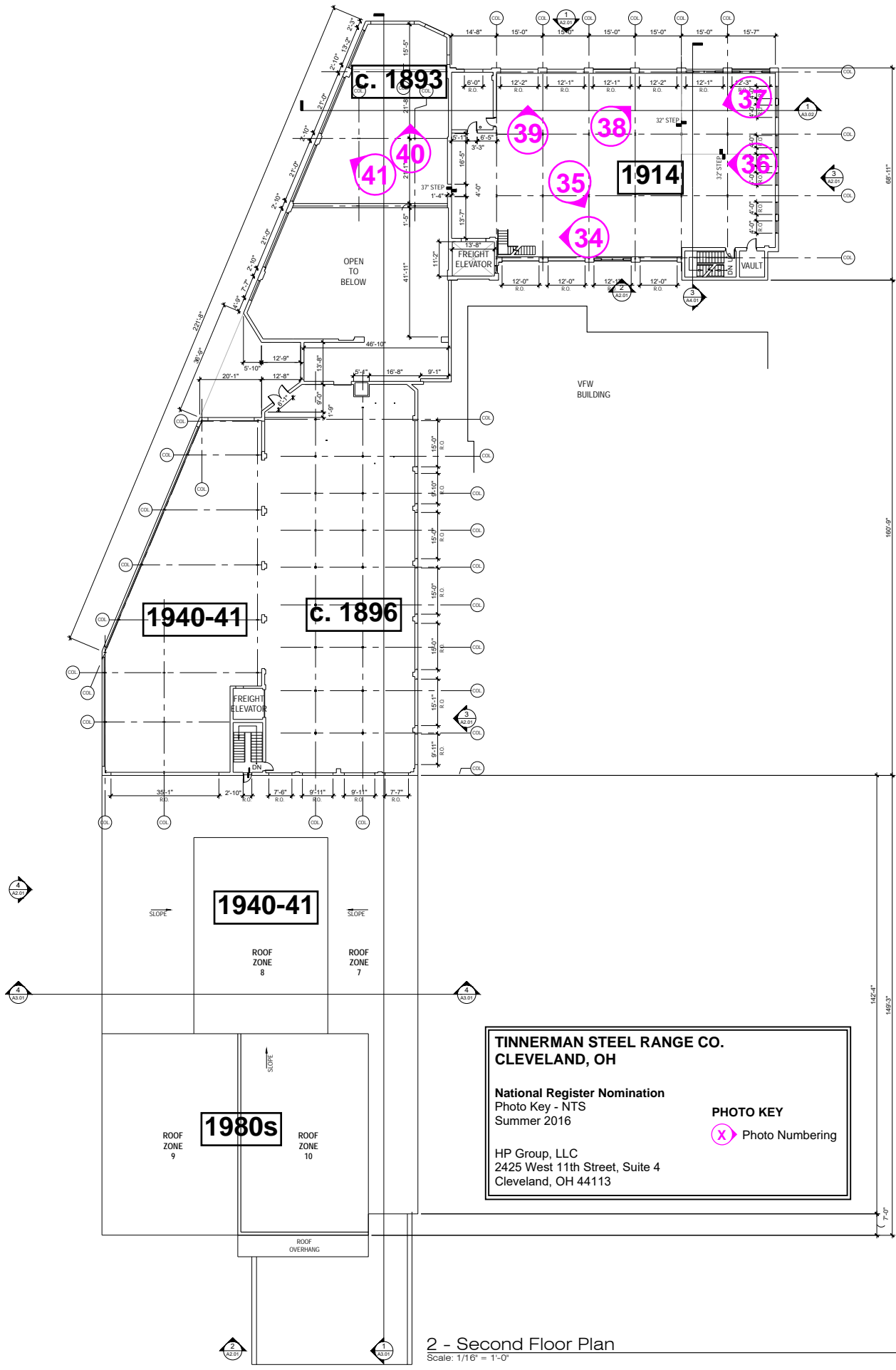
National Register Nomination
Photo Key - NTS
Summer 2016

PHOTO KEY
X Photo Numbering

HP Group, LLC
2425 West 11th Street, Suite 4
Cleveland, OH 44113


1 - First Floor Plan
Scale: 1/16" = 1'-0"





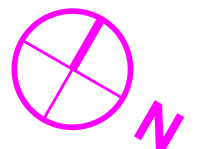
**TINNERMAN STEEL RANGE CO.
CLEVELAND, OH**

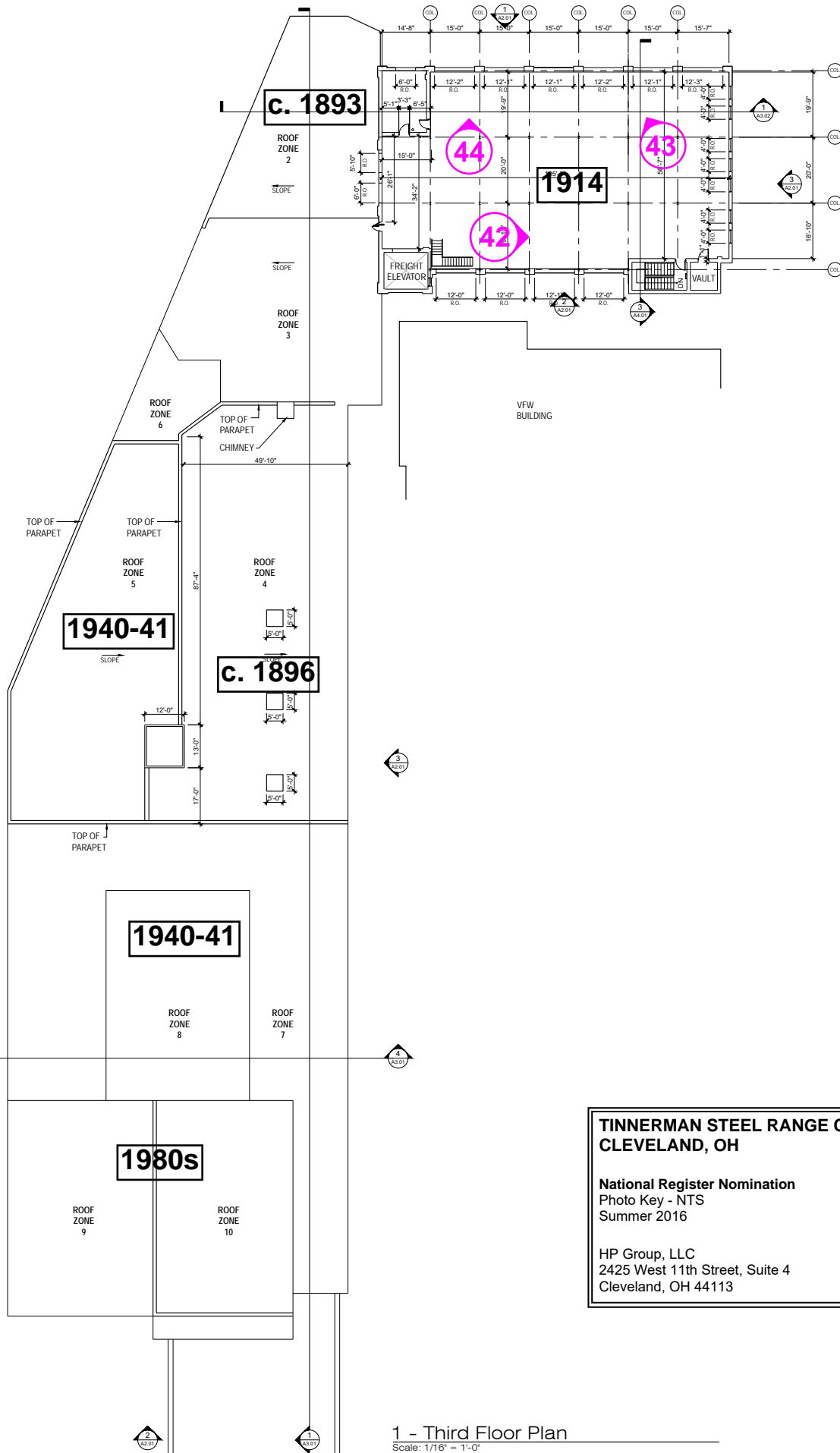
National Register Nomination
Photo Key - NTS
Summer 2016

PHOTO KEY
 Photo Numbering

HP Group, LLC
2425 West 11th Street, Suite 4
Cleveland, OH 44113

2 - Second Floor Plan
Scale: 1/16" = 1'-0"





c. 1893

1914

1940-41

c. 1896

1940-41

1980s

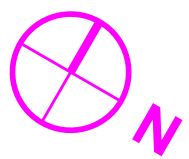
TINNERMAN STEEL RANGE CO.
CLEVELAND, OH

National Register Nomination
 Photo Key - NTS
 Summer 2016

PHOTO KEY
 (X) Photo Numbering

HP Group, LLC
 2425 West 11th Street, Suite 4
 Cleveland, OH 44113

1 - Third Floor Plan
 Scale: 1/16" = 1'-0"



Tinnerman Steel Range Co. - Boundary Map

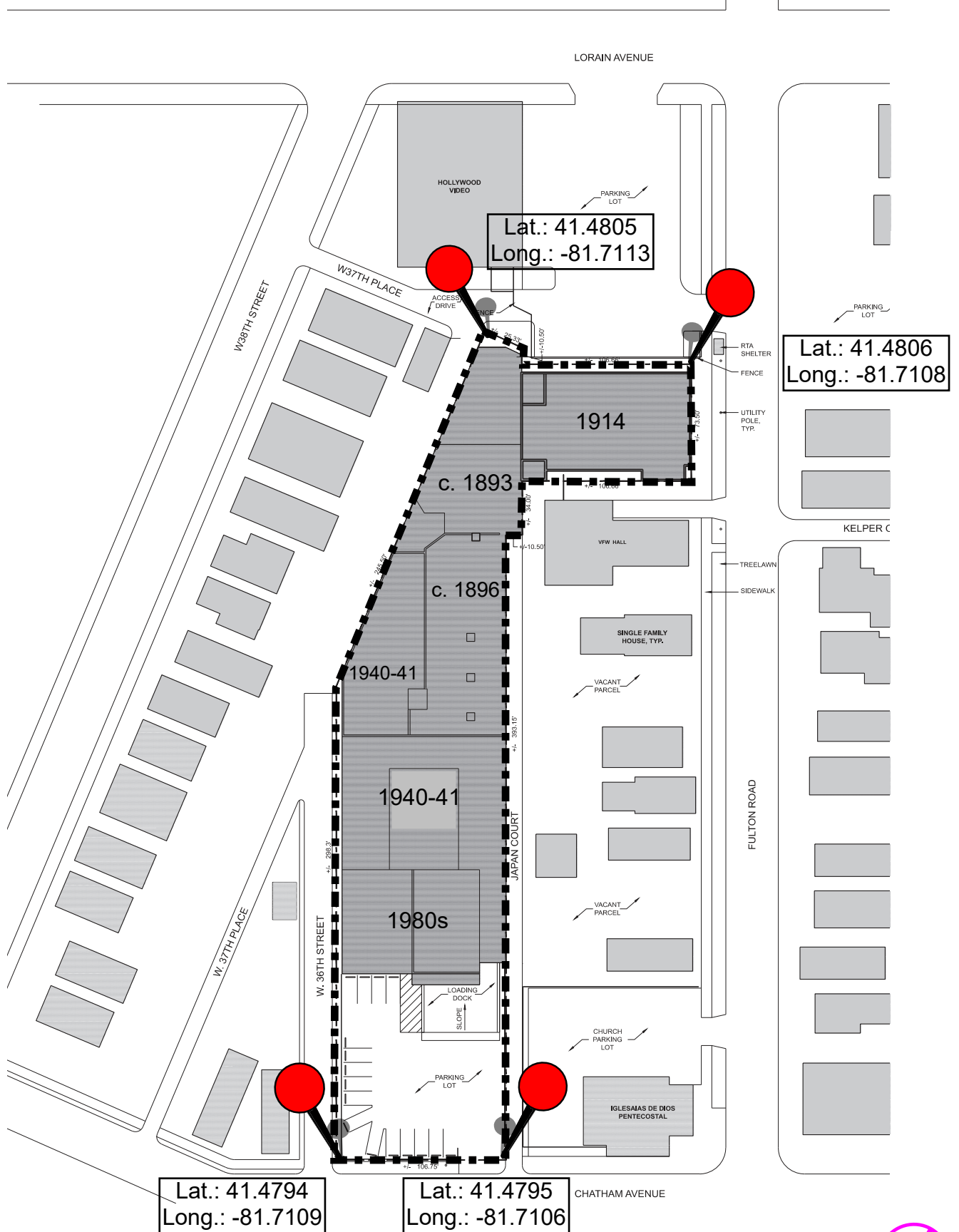
2048 Fulton Road, Cleveland, OH 44113

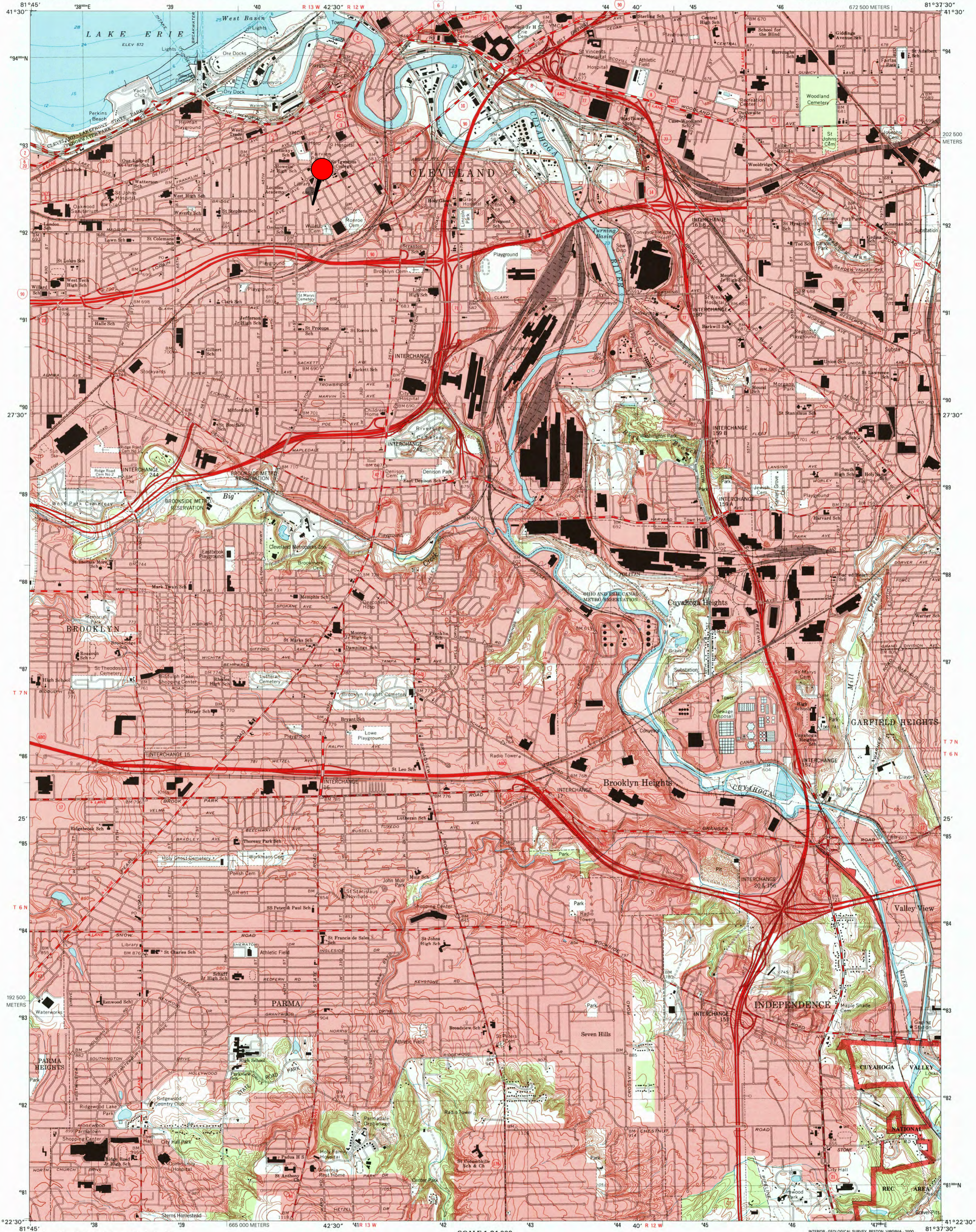
Summer 2016



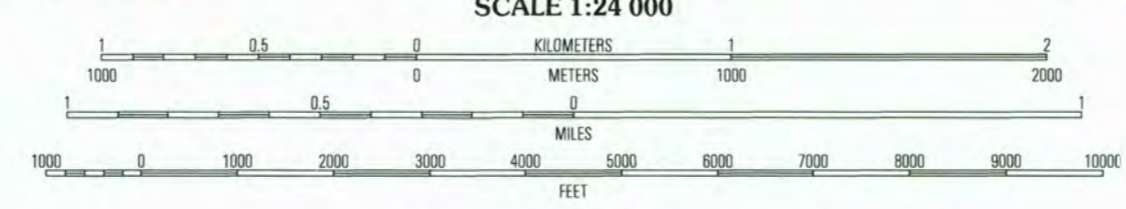
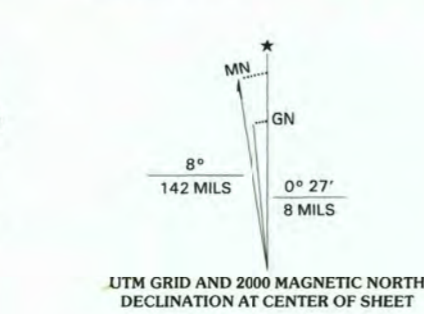
HP GROUP LLC

HISTORIC PRESERVATION GROUP





Produced by the United States Geological Survey Topography compiled 1952. Planimetry derived from imagery taken 1994 and other sources. Public Land Survey System and survey control current as of 1963. Selected hydrographic data compiled from NOS Charts 35 (1959) and 354 (1962). This information is not intended for navigational purposes. North American Datum of 1983 (NAD 83). Projection and 1 000-meter grid: Universal Transverse Mercator, zone 17 2 500-meter ticks: Ohio Coordinate System of 1983 (north zone) North American Datum of 1927 (NAD 27) is shown by dashed corner ticks. The values of the shift between NAD 83 and NAD 27 for 7.5-minute intersections are obtainable from National Geodetic Survey NADCON software. There may be private inholdings within the boundaries of the National or State reservations shown on this map. Entire area lies within the Connecticut Western Reserve. Dotted land lines established by private subdivision of the Connecticut Western Reserve. Landmark buildings verified 1963.



CONTOUR INTERVAL 10 FEET NATIONAL GEODETIC VERTICAL DATUM OF 1929 TO CONVERT FROM FEET TO METERS, MULTIPLY BY 0.3048 DEPTH CURVES AND SOUNDINGS IN FEET REFERENCE LEVEL 568.6 FEET; INTERNATIONAL GREAT LAKES DATUM THE RELATIONSHIP BETWEEN THE TWO DATUMS IS VARIABLE

THIS MAP COMPLIES WITH NATIONAL MAP ACCURACY STANDARDS FOR SALE BY U.S. GEOLOGICAL SURVEY, P.O. BOX 25286, DENVER, COLORADO 80225 A FOLDER DESCRIBING TOPOGRAPHIC MAPS AND SYMBOLS IS AVAILABLE ON REQUEST



Table with 2 columns: 1-8 and 1-8. 1 Cleveland North, 2 East Cleveland, 3 Lakewood, 4 Shaker Heights, 5 Berea, 6 Broadview Heights, 7 Northfield.

ROAD CLASSIFICATION Primary highway hard surface, Secondary highway hard surface, Interstate Route, U.S. Route, State Route, Light-duty road, hard or improved surface, Unimproved road.

CLEVELAND SOUTH, OH 1994 NIMA 4661 NW-SERIES V882





VISTA
2048
Edison Road

VISTA
COLOR IMAGING

CALL FOR
RENT
304-423-1234



VISTA
2048
Fulton Board

VISTA
COLOR IMAGING







VISTA
COLOR LAB
[216] 651-2830
2048 FULTON ROAD

JLG







NO
PARKING
IN
THIS
COURT



REPUBLIC
442-421-8787



REPUBLIC
SERVICES



REPUBLIC
SERVICES
440-450-5191
republicservices.com





NO
PARKING
IN
THIS
COURT

NO
PARKING
IN
THIS
COURT



THE
Taylor
GROUP
200 CHAMBERS STREET, NEW YORK, NY 10013

1000 1000 1000



Taylor











NEAL
PRINTS WASHED
DATE
BY

GENERAL
WORKING
ORDER
DATE
BY

NEAL
PRINTS WASHED
DATE
BY

NEAL
PRINTS WASHED
DATE
BY

NEAL
PRINTS WASHED
DATE
BY

NEAL
PRINTS WASHED
DATE
BY

NEAL
PRINTS WASHED
DATE
BY



EXIT





NOTICE
THIS PROPERTY IS
MONITORED BY
CLOSED CIRCUIT TV.









NO
SMOKING





PLEASE
TURN OFF
LIGHTS!!!
WHEN
FINISHED













OB ART







EXIT













EMERGENCY EXIT

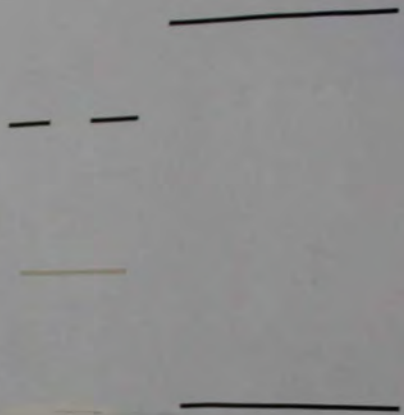








DO NOT OPEN





EMERGENCY EXIT

UNITED STATES DEPARTMENT OF THE INTERIOR
NATIONAL PARK SERVICE

NATIONAL REGISTER OF HISTORIC PLACES
EVALUATION/RETURN SHEET

Requested Action:

Property Name:

Multiple Name:

State & County:

Date Received: Date of Pending List: Date of 16th Day: Date of 45th Day: Date of Weekly List:

Reference number:

Nominator:

Reason For Review:

Accept Return Reject Date

Abstract/Summary Comments:

Recommendation/ Criteria

Reviewer Edson Beall Discipline Historian

Telephone _____ Date _____

DOCUMENTATION: see attached comments : No see attached SLR : No

If a nomination is returned to the nomination authority, the nomination is no longer under consideration by the National Park Service.

NATIONAL REGISTER OF HISTORIC PLACES
NPS TRANSMITTAL CHECK LIST

OHIO HISTORIC PRESERVATION OFFICE
800 E. 17th Avenue
Columbus, OH 43211
(614)-298-2000

The following materials are submitted on Dec. 30, 2016
For nomination of the Tinnerman Steel to the National Register of
Historic Places: Range Co., Cuyahoga Co, OH

- Original National Register of Historic Places nomination form
___ Paper PDF
- ___ Multiple Property Nomination Cover Document
___ Paper ___ PDF
- ___ Multiple Property Nomination form
___ Paper ___ PDF
- Photographs
___ Prints TIFFs
- CD with electronic images
- Original USGS map(s)
___ Paper Digital
- Sketch map(s)/Photograph view map(s)/Floor plan(s)
___ Paper PDF
- ___ Piece(s) of correspondence
___ Paper ___ PDF
- ___ Other _____

COMMENTS:

- ___ Please provide a substantive review of this nomination
- ___ This property has been certified under 36 CFR 67
- ___ The enclosed owner objection(s) do ___ do not ___
Constitute a majority of property owners
- ___ Other: _____



December 30, 2016

J. Paul Loether, Deputy Keeper and Chief, National Register
and National Historic Landmark Programs
National Park Service
National Register of Historic Places
1201 Eye St. NW, 8th Fl. (2280)
Washington D.C. 20005

Dear Mr. Loether:

Enclosed please find five (5) new National Register nominations for Ohio. All appropriate notification procedures have been followed for the new nominations submission.

NEW NOMINATION

William Kelley Hardware-Hayesville Odd Fellows Hall
Tinnerman Steel Range Company
Budd Dairy Company
The Edna
Lowrie, S. Gale and Agnes P., House

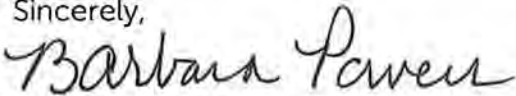
COUNTY

Ashland
Cuyahoga
Franklin
Franklin
Hamilton

The enclosed disks contain the true and correct copies of the nominations to the National Register of Historic Places for the following: Tinnerman Steel Range Company, Cuyahoga County and The Edna, Franklin County.

If you have questions or comments about these documents, please contact the National Register staff in the Ohio Historic Preservation Office at (614) 298-2000.

Sincerely,

for 
Lox A. Logan, Jr.
Executive Director and CEO2000
State Historic Preservation Officer
Ohio History Connection

Enclosures