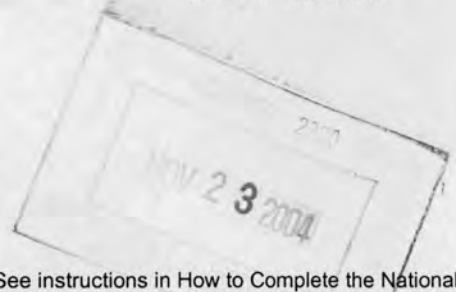


1430

United States Department of the Interior
National Park Service

National Register of Historic Places
Registration Form



This form is for use in nominating or requesting determinations for individual properties and districts. See instructions in How to Complete the National Register of Historic Places Registration Form (National Register Bulletin 16A). Complete each item by marking "x" in the appropriate box or by entering the information requested. If any item does not apply to the property being documented, enter "N/A" for "not applicable." For functions, architectural classification, materials, and areas of significance, enter only categories and subcategories from the instructions. Place additional entries and narrative items on continuation sheets (NPS Form 10-900a). Use a typewriter, word processor, or computer, to complete all items.

1. Name of Property

historic name Truman Parkway, Metropolitan Park System of Greater Boston

other names/site number _____

2. Location

street & number Truman Parkway n/a not for publication

city or town Boston, Milton n/a vicinity

state Massachusetts code MA county Suffolk, Norfolk code 025 021 zip code 02136, 02186

3. State/Federal Agency Certification

As the designated authority under the National Historic Preservation Act of 1986, as amended, I hereby certify that this nomination request for determination of eligibility meets the documentation standards for registering properties in the National Register of Historic Places and meets the procedural and professional requirements set forth in 36 CFR Part 60. In my opinion, the property meets does not meet the National Register Criteria. I recommend that this property be considered significant nationally statewide locally. (See continuation sheet for additional comments.)

Petsy Friedberg, National Register Director 11/15/04
Signature of certifying official/Title Cara H. Metz, State Historic Preservation Officer Date
Massachusetts Historical Commission

State or Federal agency and bureau _____

In my opinion, the property meets does not meet the National Register criteria. (See continuation sheet for additional Comments.)

Signature of certifying official/Title _____ Date _____

State or Federal agency and bureau _____

4. National Park Service Certification

I, hereby certify that this property is:
 entered in the National Register
 See continuation sheet.
 determined eligible for the National Register
 See continuation sheet.
 determined not eligible for the National Register
 removed from the National Register
 other (explain): _____

Signature of the Keeper Patrick Andrews Date of Action 1/5/2005

Truman Parkway
Name of Property

Suffolk, Norfolk, MA
County and State

5. Classification

Ownership of Property

(Check as many boxes as apply)

- private
- public-local
- public-State
- public-Federal

(Check only one box)

- building(s)
- district
- site
- structure
- object

Number of Resources within Property

(Do not include previously listed resources in the count.)

Contributing

Noncontributing

_____ building
_____ 1 _____ sites
_____ 3 _____ structures
_____ _____ objects
_____ 4 _____ Total

Name of related multiple property listing

(Enter "N/A" if property is not part of a multiple property listing.)

Metropolitan Park System of Greater Boston MPS

Number of contributing resources previously listed in the National Register

_____ 0 _____

6. Function or Use

Historic Functions

(Enter categories from instructions)

RECREATION/CULTURE: outdoor recreation

LANDSCAPE: park, natural feature

TRANSPORTATION: road-related

Current Functions

(Enter categories from instructions)

RECREATION/CULTURE: outdoor recreation

LANDSCAPE: park, natural feature

TRANSPORTATION: road-related

7. Description

Architectural Classification

(Enter categories from instructions)

N/A

Materials

(Enter categories from instructions)

foundation N/A

walls N/A

roof N/A

other asphalt, granite, concrete, plantings

Narrative Description

(Describe the historic and current condition of the property on one or more continuation sheets.)

United States Department of the Interior
National Park Service

National Register of Historic Places
Continuation Sheet

Truman Parkway
Metropolitan Park System of Greater Boston MPS
Boston/Milton (Suffolk/Norfolk), MA

Section number 7 Page 1

DESCRIPTION

Truman Parkway, constructed in 1931, is a nearly two-mile-long connecting and river parkway in greater Boston's Metropolitan Park System. Truman Parkway begins, at its northerly terminus, at Brush Hill Road and ends, at its southerly terminus, at Neponset Valley Parkway. The roadway begins in Milton and proceeds west into the Boston neighborhood of Hyde Park, on the east side of the Neponset River. It passes back into Milton near Cranmore Road, before crossing over the Neponset River and back into Boston (Hyde Park), where it terminates. Curving gently along the eastern bank of the Neponset River, Truman Parkway borders the Neponset River Reservation, which was created late in the nineteenth century for the Metropolitan Park Commission (MPC) by the firm of Olmsted, Olmsted and Eliot and its successor firm Olmsted Brothers. (Note: The MPC became the Metropolitan District Commission [MDC] in 1920; in 2003, the MDC was reorganized as the Division of Urban Parks and Recreation within the newly created Department of Conservation and Recreation [DCR]). For the purpose of this nomination, Truman Parkway will be discussed from north to south.

Truman Parkway (#1 on the data sheet) is a four-lane divided highway that travels through a variable setting of residential, commercial, and parklike recreational areas. (photo #1) Beginning, at its northern terminus, at Brush Hill Road in Milton, Truman Parkway travels in a northeast to southwest direction as it follows the Neponset River and, for two short segments, parallels the Metropolitan Boston Transit Authority (MBTA) Commuter Rail. A few early to mid-twentieth-century houses, barely discernable from the road, bound the southwest side of the road as it travels southwest from Brush Hill Road. The northeast side of the road is bounded by the Neponset River and an unpaved path. The MBTA Rail borders the river side of the road until just before it reaches Fairmount Avenue. Wooded areas and SS-type metal barriers make the railroad almost imperceptible from the road. A small DCR-owned pocket park, Phillip C. Bowie Square, is located on the northeastern side of the road where Beacon Street forks off to the northeast from Truman Parkway just north of the parkway's intersection with Fairmount Avenue. (photo #2) This small triangular park is raised about 2 1/2 feet above the parkway. Granite edging retains the sides of the park, and a few stairs are cut into the side of the retaining wall to allow access to the park from the abutting sidewalk. The park is turf with flowerbeds and a few fruit trees. Because the National Register boundary for this portion of the parkway corresponds to the back of the sidewalk, this park is considered a part of the setting and not part of the parkway for the purpose of this nomination.

Nearing Fairmount Avenue, the roadway enters a small commercial area in the primarily residential Fairmount neighborhood, whose buildings date to the late nineteenth and early twentieth centuries. The

(continued)

United States Department of the Interior
National Park Service

National Register of Historic Places
Continuation Sheet

Truman Parkway
Metropolitan Park System of Greater Boston MPS
Boston/Milton (Suffolk/Norfolk), MA

Section number 7 Page 2

southwest side of the road approaching Fairmount Avenue from the northeast consists of early to mid-twentieth-century houses set about 15 feet from the edge of the sidewalk.

As the roadway passes through the Truman Parkway/Fairmount Avenue intersection, early to mid-twentieth century two- and three-story wood frame houses border both sides of the road (photo #3). The Neponset River runs behind the houses that border the northwest side of the road. This setting continues until the roadway reaches Glenwood Avenue, and the MBTA Rail borders the northwest side of the road again. An SS-type rail buffers the parkway from the railroad. After Glenwood Avenue, the character of the southeast side of the roadway changes to scattered late-twentieth century houses that are set far back from the roadway. Hedges, planted on private property, screen the houses from the road.

The character of the roadway shifts again as the parkway passes Wakefield Street, also known as Washington Street. A municipal playground to the east and a municipal park to the west border the roadway. Trees associated with the playground and park bound both sides of the roadway through this section. (photo #5) A half-shell amphitheater, owned by DCR, is located in the park to the west of Truman Parkway. The playground to the east consists of recreational fields, including tennis courts, playgrounds, and ballfields. A small monument erected in 1968 honoring Paul C. Carter, Jr., a Marine Corps veteran of the Vietnam War, is located at the southeast corner of the playground. Like the playground, this monument is located outside of the boundary of the parkway nomination.

Several one- and two-story, post-World War II houses border the east side of the road just before it enters the Neponset River Reservation, where the Fowl Meadow Conservation Area, a DCR-owned wetland, borders both sides of the road. This setting continues until the road reaches its southern terminus at the Neponset River Reservation.

The configuration of the parkway itself is generally consistent for the entirety of its length: two 12-foot-wide lanes traveling in either direction divided by a **turf median** edged with granite curbs (**#2 on the data sheet, photo #4**). Parallel parking is permitted along both sides of the street, in 4-foot-wide lanes on either side. Median breaks have been provided at busy intersections to allow for left-hand turns. Sidewalks typically occur where there is dense residential and/or commercial development. An informal dirt path sporadically bounds the northwest (river) side of the parkway. Vertical granite curbs consistently border the roadway, although curb cuts have been provided for associated residences and businesses that border the road. Lighting, of the cobra-head type, hangs from municipal utility poles.

(continued)

United States Department of the Interior
National Park Service

National Register of Historic Places
Continuation Sheet

Truman Parkway
Metropolitan Park System of Greater Boston MPS
Boston/Milton (Suffolk/Norfolk), MA

Section number 7 Page 3

There is limited formal landscaping associated with the parkway except for the evenly spaced oak trees (**Truman Parkway Tree Allee, #3 on the data sheet, photo #5**) that border the outside edges of the median.

At its southern terminus, Truman Parkway is entirely encompassed by the Neponset River Reservation. The landscape in this area consists of the Fowl Meadow Conservation Area, a nature preserve that bounds the parkway on both sides. This is the only portion of the roadway that does not immediately follow the Neponset River. The Neponset River flows in a northwest-southeast direction from Paul's Bridge – Hubbard's Bridge (NR 1972), part of Neponset Valley Parkway near the Truman Parkway's southern terminus, until it crosses under the roadway north of Truman Parkway's intersection with Neponset Valley Parkway. A single-arch, granite-block bridge (**Neponset River Bridge, #4 on the data sheet**) that dates to the early twentieth-century carries the parkway over the Neponset River. This bridge is considered a contributing feature of Truman Parkway. An SS-type rail borders both sides of the roadway as it travels through the reservation; similar barriers occur intermittently along the parkway where it overlooks the Neponset River. While the geometry of the roadway is typically flat throughout its length, a stone retaining wall borders the road on its east side just north of Fairmount Avenue, where the surrounding topography rises above the parkway for a short distance. (photo #6) Elevations for the parkway itself are generally at 40 feet above sea level. The parkway's highest elevation, 96 feet, is just west of Cranmore Road at the Boston/Milton boundary.

Views along Truman Parkway are contained along the corridor where it is bounded by residential and commercial development. Despite bordering the Neponset River, vegetation along the banks of the river blocks it almost entirely from the view of the roadway. As the roadway travels toward its southern terminus, views open up toward the playgrounds, picnic areas, and marshlands within the adjoining city parks and Neponset River Reservation.

Archaeological Description

Known ancient Native American sites have been documented in close proximity to the Truman Parkway, including eleven sites in the general area (within one mile) and at least one site that abuts or originally extended into the parkway right of way. Site 19-NF-134 is located at the southern terminus of the parkway. Lithic artifacts and ceramics possibly representing the Transitional Archaic and Woodland Periods have been collected in the area. Environmental characteristics indicate a high potential for the presence of ancient Native American sites in

(continued)

United States Department of the Interior
National Park Service

**National Register of Historic Places
Continuation Sheet**

Section number 7 Page 4

**Truman Parkway
Metropolitan Park System of Greater Boston MPS
Boston/Milton (Suffolk/Norfolk), MA**

the Truman Parkway locale. The parkway includes several well-drained, level to moderately sloping terraces and other landforms located within 1,000 feet of the Neponset River, Trout Brook, Pine Tree Brook and other ponds, streams and wetlands. The entire parkway lies within the Neponset River drainage.

While known sites and high ancient Native American site potential are documented for the Truman Parkway area, the potential for locating significant Native resources within the parkway boundaries established for this nomination is low. Impacts related to construction and maintenance of the roadway and related facilities would have had an adverse effect on any ancient Native American resources that might have been located in the parkway right of way. Fragmented portions of archaeological sites, including deeply buried artifact concentrations and truncated features, may survive within the right of way; however, it is doubtful NR-eligible sites survive. Known sites, including any potential evidence of site 19-SU-134 that existed within or extended into the parkway right of way have been essentially destroyed.

Environmental characteristics and documented Colonial settlement patterns also indicate a high potential for the presence of historical archaeological sites in the vicinity of the Truman Parkway. European settlement has been documented in the Boston and Milton locale since early in the 17th century. Structural evidence and artifacts related to residential, commercial, and industrial resources may have been located originally within or abutting the nominated area. In general, however, given the same impacts associated with construction of the parkway described above for ancient Native American resources, the potential for recovering intact and significant historical archaeological resources is also low within the Truman Parkway right of way. Roadway construction has also destroyed potential historical archaeological resources within the nominated parkway area. Truncated features and/or deeply buried fragments of sites may survive, but the overall integrity of these sites has been compromised.

(end)

Truman Parkway _____

Name of Property

Suffolk, Norfolk, MA _____

County and State

8. Statement of Significance

Applicable National Register Criteria

(Mark "x" in one or more boxes for the criteria qualifying the property for National Register listing.)

- A** Property is associated with events that have made a significant contribution to the broad patterns of our history.
- B** Property is associated with the lives of persons significant in our past.
- C** Property embodies the distinctive characteristics of a type, period, or method of construction or represents the work of a master, or possesses high artistic values, or represents a significant and distinguishable entity whose components lack individual distinction.
- D** Property has yielded, or is likely to yield, information important in prehistory or history.

Criteria Considerations

(Mark "x" in all the boxes that apply.)

Property is:

- A** owned by religious institution or used for religious purposes.
- B** removed from its original location.
- C** a birthplace or grave.
- D** a cemetery.
- E** a reconstructed building, object, or structure.
- F** a commemorative property.
- G** less than 50 years of age or achieved significance within the past 50 years.

Narrative Statement of Significance

(Explain the significance of the property on one or more continuation sheets.)

9. Major Bibliographical References

(Cite the books, articles, and other sources used in preparing this form on one or more continuation sheets.)

Previous documentation on file (NPS):

- preliminary determination of individual listing (36 CFR 67) has been requested
- previously listed in the National Register
- previously determined eligible by the National Register
- designated a National Historic Landmark
- recorded by Historic American Buildings Survey # _____
- recorded by Historic American Engineering Record # _____

Areas of Significance

(Enter categories from instructions)

Community Planning and Development _____

Engineering _____

Landscape Architecture _____

Transportation _____

Period of Significance

1931-1956 _____

Significant Dates

1931 _____

Significant Person

(Complete if Criterion B is marked above)

Cultural Affiliation

Architect/Builder

Massachusetts Dept. of Public Works _____

Primary location of additional data:

- State Historic Preservation Office
- Other State agency
- Federal agency
- Local government
- University
- Other

Name of repository:

Massachusetts DCR _____

United States Department of the Interior
National Park Service

National Register of Historic Places
Continuation Sheet

Section number 8 Page 1 Truman Parkway
Metropolitan Park System of Greater Boston MPS
Boston/Milton (Suffolk/Norfolk), MA

SIGNIFICANCE

Truman Parkway has had an atypical existence within the Metropolitan Park System of Greater Boston. Unlike most of the other parkways included in this nomination, Truman Parkway did not come under the care and control of the former Metropolitan District Commission (MDC) until it was transferred from the City of Boston to the MDC (Statute 1971, chapter 1116) in 1971 as a result of the city's fiscal inability to maintain certain roadways. (Note: The Metropolitan Park Commission [MPC], established in 1893, became the Metropolitan District Commission [MDC] in 1920; in 2003, the MDC was reorganized as the Division of Urban Parks and Recreation within the newly created Department of Conservation and Recreation [DCR]). Parkway within the metropolitan park system should typically date from the period of significance, defined as 1893-1956. However, a small number of parkways now in the DCR system, including Truman Parkway, were built between 1893 and 1956 but were not transferred to the DCR until after the period of significance. Many of these parkways, including Truman Parkway, were constructed with a design intent similar to that of the core group of nominated parkways and have retained characteristics consistent with other parkways in the metropolitan park system. Because Truman Parkway fits into this category, it is considered eligible for inclusion in this Multiple Property Documentation Format nomination. Because of the way DCR has owned Truman Parkway, there is little information in the form of historic construction plans or agency Annual Reports to document this property. Additional information may be available through other sources of information that have yet to be discovered.

Truman Parkway possesses integrity of location, design, setting, materials, workmanship, feeling, and association. It meets National Register Criteria A and C in the significance areas of community planning and development, conservation, engineering, landscape architecture, and transportation at the state level and fulfills the Parkways Registration Requirements for the associated Connecting Parkway and River Parkway property subtypes, under Section F of this Multiple Property Documentation Format nomination. The period of significance for this property is from the 1931, when the parkway was built, to 1956.

Truman Parkway was built in 1931 as Truman Highway by the Massachusetts Department of Public Works. It was built primarily as a municipal link between two parkways owned and built by the MDC: the Neponset Valley Parkway and Brush Hill Road. In a reflection of design standards for an MDC River Parkway, such as Alewife Brook Parkway or Furnace Brook Parkway, the roadway was designed to follow the gentle curves of the Neponset River, which primarily borders its northwestern side. The parkway ultimately terminates at Neponset Valley Parkway inside of the Neponset River Reservation, one of the very first reservations to be established by the Metropolitan Park Commission in the last years of the 19th century. The physical configuration of the parkway, as well as the materials used to build and

(continued)

United States Department of the Interior
National Park Service

National Register of Historic Places Continuation Sheet

Section number 8 Page 2 Truman Parkway
Metropolitan Park System of Greater Boston MPS
Boston/Milton (Suffolk/Norfolk), MA

detail the roadway, are consistent with MDC parkways built during the same period. Two lanes in each direction, defined by granite curbing, divided by a turf median, and framed by an allee of trees, Truman Parkway displays characteristic features common to connecting and river parkways within the park system. Truman Parkway is so similar in appearance to an MDC-designed parkway that it would be difficult to distinguish between it and a parkway that was built as a part of the Metropolitan Park System of Greater Boston.

(end)

FOX RIVER BOND
25% COTTON

Truman Parkway
Name of Property

Suffolk, Norfolk, MA
County, State

10. Geographical Data

Acreage of Property approximately 8 acres

UTM References See continuation sheet.

(Place additional UTM references on a continuation sheet)

1. 19 Zone	326540 Easting	4680480 (Brush Hill Rd.) Northing	3. 19 Zone	324600 Easting	(Neponset 4678100 Bridge) Northing
2. 19 Zone	325220 Easting	4679740 (Fairmount Ave.) Northing	4. 19 Zone	324620 Easting	4677840 (Nep. Vall. Northing Parkway)

— See continuation sheet

Verbal Boundary Description

(Describe the boundaries of the property on a continuation sheet.)

Boundary Justification

(Explain why the boundaries were selected on a continuation sheet.)

11. Form Prepared By

name/title V. Adams, T. Orwig, S. Berg and E. Maass, PAL with Betsy Friedberg, NR director, MHC

organization Massachusetts Historical Commission date October 2004

street & number 220 Morrissey Boulevard telephone 617-727-8470

city or town Boston state MA zip code 02125

Additional Documentation

Submit the following items with the completed form:

Continuation Sheets

Maps

A **USGS map** (7.5 or 15 minute series) indicating the property's location.

A **sketch map** for historic districts and properties having large acreage or numerous resources.

Photographs

Representative **black and white photographs** of the property.

Additional items (Check with the SHPO or FPO for any additional items)

Property Owner

(Complete this item at the request of the SHPO or FPO.)

name Commonwealth of Massachusetts, DCR

street & number 251 Causeway Street telephone 617-727-5264

city or town Boston state MA zip code 02114

Paperwork Reduction Act Statement: This information is being collected for applications to the National Register of Historic Places to nominate properties for listing or determine eligibility for listing, to list properties, and to amend existing listings. Response to this request is required to obtain a benefit in accordance with the National Historic Preservation Act, as amended (16 U.S.C. 470 et seq.).

Estimated Burden Statement: Public reporting burden for this form is estimated to average 18.1 hours per response including the time for reviewing instructions, gathering and maintaining data, and completing and reviewing the form. Direct comments regarding this burden estimate or any aspect of this form to the Chief, Administrative Services Division, National Park Service, P.O. Box 37127, Washington, DC 20013-7127; and the Office of Management and Budget, Paperwork Reductions Project (1024-0018), Washington, DC 20503.

United States Department of the Interior
National Park Service

National Register of Historic Places Continuation Sheet

Section number 10 Page 1 Truman Parkway
Metropolitan park System of Greater Boston MPS
Boston/Milton (Suffolk/Norfolk), MA

BOUNDARY DESCRIPTION AND JUSTIFICATION

The National Register boundary for Truman Parkway is drawn to encompass property historically and currently associated with the roadway. This includes the parkway corridor and adjacent planting strips and sidewalks, where they exist. Where sidewalks and planting strips do not exist, the nomination includes all the land that extends back ten feet from the current edge of the parkway. The boundary does not include adjacent DCR-owned parkland that is not directly related to the parkway. The specific termini for Truman Parkway are as follows:

Truman Parkway: The northeastern terminus of Truman Parkway corresponds to a line of convenience drawn across the parkway from north to south where it adjoins Brush Hill Road in Milton. The southwestern terminus of the parkway corresponds to a line of convenience drawn along the eastern edge of Neponset Valley Parkway, Segment Two, in Boston (Hyde Park).

(end)

FOX RIVER BOND

**United States Department of the Interior
National Park Service**

**National Register of Historic Places
Continuation Sheet**

**Truman Parkway
Metropolitan Park System of Greater Boston MPS
Boston/Milton (Suffolk/Norfolk), MA**

Section number _____ Page _____

PHOTOGRAPHS

Photographer: Emily Maass, August 2002
Location of negatives: PAL, Pawtucket, RI

1. View looking SW along Truman parkway near Brush Hill Road
2. View facing SE toward intersection with Fairmount Avenue
3. View facing SW just south of Fairmount Avenue intersection
4. View facing N from Glenwood Avenue
5. View facing NW from Wakefield Avenue showing recreational grounds and park bordering parkway
6. View of Neponset River bridge facing S, near intersection of Neponset Valley Pkwy.

**Truman Highway
Boston and Milton, Massachusetts
District Data Sheet**

#	NRHP Listed	MHC #	Name	Town	Location	Date	Status	Type
#1			Truman Parkway	Boston and Milton	Connecting parkway between Brush Hill Road, Milton, and Neponset Valley Parkway, Segment 2, Milton	Built in 1931, acquired by MDC in 1971	C	Structure
#2			Truman Parkway Median	Boston and Milton	Throughout Truman Parkway	ca. 1930s	C	Structure
#3			Truman Parkway Tree Allee	Boston and Milton	Throughout Truman Parkway	early 20th century	C	Site
#4			Neponset River Bridge	Boston and Milton	Carries Truman Parkway over the Neponset River, just north of intersection with Neponset Valley Parkway, Segment 2	early 20th century	C	Structure

UNITED STATES DEPARTMENT OF THE INTERIOR
NATIONAL PARK SERVICE

NATIONAL REGISTER OF HISTORIC PLACES
EVALUATION/RETURN SHEET

REQUESTED ACTION: NOMINATION

PROPERTY NAME: Truman Parkway--Metropolitan Park System of Greater Boston

MULTIPLE NAME: Metropolitan Park System of Greater Boston MPS

STATE & COUNTY: MASSACHUSETTS, Suffolk

DATE RECEIVED: 11/23/04 DATE OF PENDING LIST: 12/21/04
DATE OF 16TH DAY: 1/05/05 DATE OF 45TH DAY: 1/06/05
DATE OF WEEKLY LIST:

REFERENCE NUMBER: 04001430

REASONS FOR REVIEW:

APPEAL: N DATA PROBLEM: N LANDSCAPE: N LESS THAN 50 YEARS: N
OTHER: N PDIL: N PERIOD: N PROGRAM UNAPPROVED: N
REQUEST: N SAMPLE: N SLR DRAFT: N NATIONAL: N

COMMENT WAIVER: N

ACCEPT RETURN REJECT 1/5/05 DATE

ABSTRACT/SUMMARY COMMENTS:

RECOM./CRITERIA accept A&C
REVIEWER Patricia Anderson DISCIPLINE Historian
TELEPHONE _____ DATE 1/5/2005

DOCUMENTATION see attached comments Y/N see attached SLR Y/N

If a nomination is returned to the nominating authority, the nomination is no longer under consideration by the NPS.



Truman Parkway
Boston, Massachusetts

#1



Truman Parkway
Boston, Massachusetts

#2



Truman Parkway
Boston, Massachusetts
#3



Truman Parkway
Boston, Massachusetts
#4



Truman Parkway
Boston, Massachusetts
#5



Truman Parkway
Boston, Massachusetts
#6

7.5 X 15 MINUTE SERIES (TOPOGRAPHIC)

Boston South
MASSACHUSETTS
METRO PARK SYSTEM OF GREATER BOSTON

1:25 000-scale metric topographic map

7.5 X 15 MINUTE QUADRANGLE SHOWING

- Contours and elevations in meters
- Highways, roads and other manmade structures
- Water features
- Woodland areas
- Geographic names

1987



Produced by the United States Geological Survey in cooperation with Massachusetts Department of Public Works Control by USGS, NOS/NOAA, and Commonwealth of Massachusetts agencies

Compiled by photogrammetric methods from aerial photographs taken 1976. Field checked 1979. Most of the 1987 Supplemental Newton and Boston South 1:25,000-scale maps dated 1970

Selected hydrographic data compiled from NOS charts 13270 (1982) and 13272 (1982). This information is not intended for navigational purposes

Projection and 3000-meter grid: Universal Transverse Mercator, zone 19

10,000-foot grid ticks based on Massachusetts coordinate system, modified scale

1927 North American Datum

To place on the projected North American Datum 1983, move the projection lines 6 meters south and 42 meters west as shown by dashed corner ticks

There may be private inholdings within the boundaries of the National or State reservations shown on this map

CONTOUR INTERVAL: 3 METERS

NATIONAL GEODESIC VERTICAL DATUM OF 1929 CONTROL ELEVATIONS SHOWN TO THE NEAREST 0.1 METER OTHER ELEVATIONS SHOWN TO THE NEAREST 0.5 METER DEPTH CURVES AND SOUNDINGS IN METERS

DATUM IS MEAN LOW WATER

THE RELATIONSHIP BETWEEN THE TWO DATUMS IS VARIABLE

SHORELINE SHOWN REPRESENTS THE APPROXIMATE LINE OF MEAN HIGH WATER

THE MEAN RANGE OF TIDE IS APPROXIMATELY 2.9 METERS

THIS MAP COMPLIES WITH NATIONAL MAP ACCURACY STANDARDS

Meters	Feet
1	3.28084
2	6.56168
3	9.84252
4	13.12336
5	16.40420
6	19.68504
7	22.96588
8	26.24672
9	29.52756
10	32.80840

Feet	Meters
1	0.3048
2	0.6096
3	0.9144
4	1.2192
5	1.5240
6	1.8288
7	2.1336
8	2.4384
9	2.7432
10	3.0480



Topographic Map Symbols

Primary highway, hard surface	—————
Secondary highway, hard surface	—————
Light-duty road, hard or improved surface	—————
Unimproved road, trail	—————
Route marker: Interstate, U. S. State	—————
Railroad: standard gage; narrow gage	—————
Bridge; drawbridge	—————
Footbridge; overpass; underpass	—————
Railroad area: only selected buildings shown	—————
House; barn; church; school; large structure	—————
Boundary:	—————
National, with monument	—————
State	—————
County, parish	—————
Civil township, precinct, district	—————
Incorporated city, village, town	—————
National or State reservation; land park	—————
Land grant with monument; land section corner	—————
U. S. public lands survey: range, township; section	—————
Range, township; section line: location approximate	—————
Face or field line	—————
Power transmission line, located tower	—————
Dam; dam with lock	—————
Demetary: grave	—————
Campground; picnic area; U. S. location monument	—————
Woodwell; well; well: spring	—————
Mine shaft; prospect; shaft or cave	—————
Control: horizontal station; vertical station; spot elevation	—————
Contours: index; intermediate; supplementary; depression	—————
Depressed surface: city, mine, lava, sand	—————
Soundings; depth curve	—————
Perennial lake and stream; intermittent lake and stream	—————
Rapids; large and small; falls, large and small	—————
Submerged marsh; marsh; swamp	—————
Land subject to controlled inundation; woodland	—————
Scrub; mangrove	—————
Orchard; vineyard	—————

zme 19

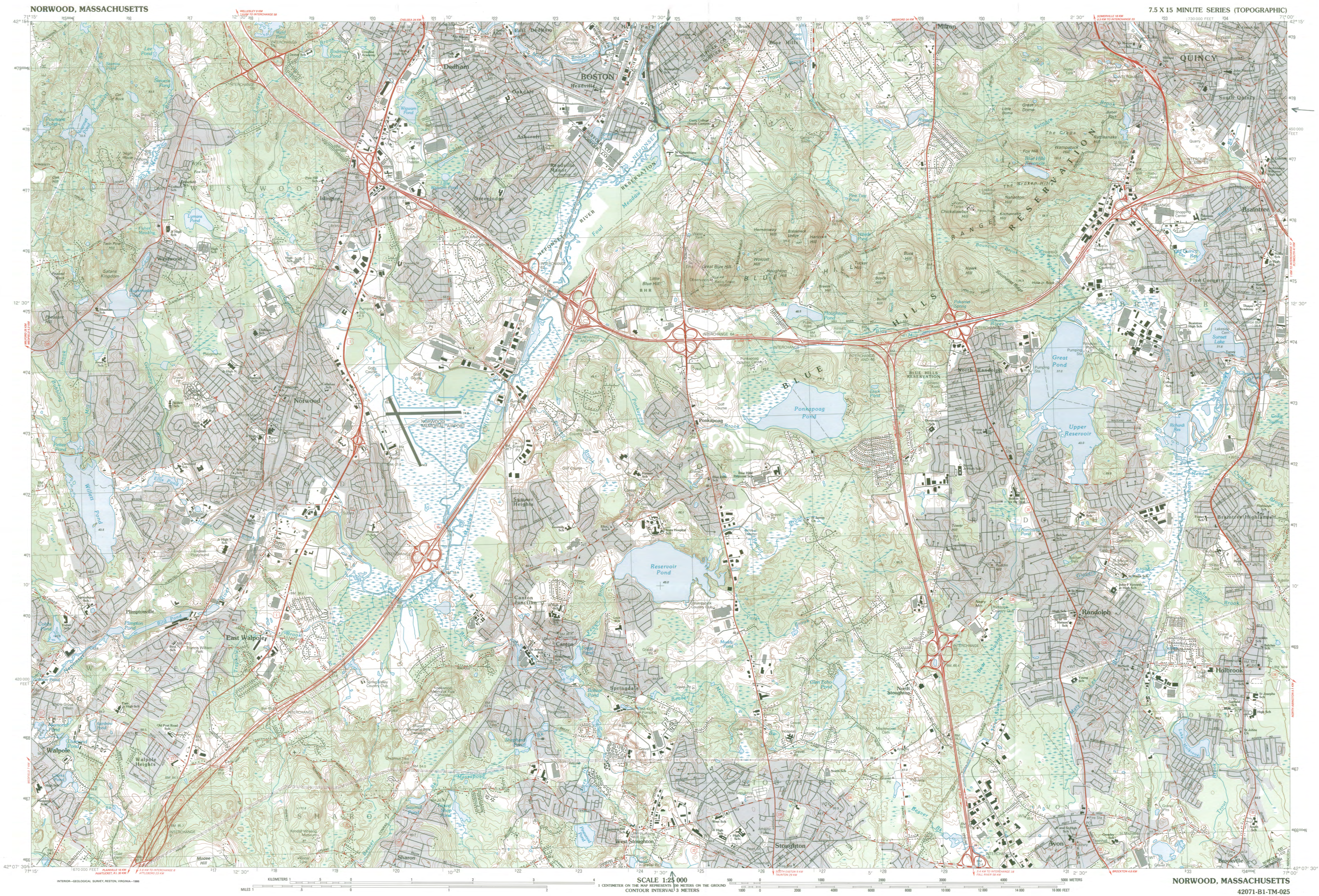
① 32650/4680480

② 325220/467740

③ 324600/4678100

④ 324620/4677840

- 3rd 19
- ① 326540/4680480
- ② 325220/4679140
- ③ 324600/4678100
- ④ 324620/467840



TRUMAN PARKWAY
BOSTON/MITCHELL, MA 42071-B1-TM-025

Norwood

MASSACHUSETTS
METROPOLITAN PARK SYSTEM OF
GREATER BOSTON, M.P.S.

1:25 000-scale metric
topographic map
SUFFOLK/NORFOLK, MA

Map 2
of 2

7.5 X 15 MINUTE QUADRANGLE
SHOWING

- Contours and elevations in meters
- Highways, roads and other manmade structures
- Water features
- Woodland areas
- Geographic names

U.S. GEOLOGICAL SURVEY

1985

Produced by the United States Geological Survey in cooperation with Massachusetts Department of Public Works
Control by USGS, NOS/NOAA, and Commonwealth of Massachusetts agencies

Compiled by photogrammetric methods from aerial photographs taken 1978. Field checked 1979. Map edited 1985. Supersedes Norwood and Blue Hills 1:25,000-scale maps dated 1970 and 1971.

Projection and 1000-meter grid: Universal Transverse Mercator, zone 18
10,000-foot grid ticks based on Massachusetts coordinate system, mainland zone. 1927 North American Datum
To place on the predicted North American Datum 1983 move the projection lines 6 meters south and 41 meters west as shown by dashed corner ticks

There may be private inholdings within the boundaries of the National or State reservations shown on this map.

CONTOUR INTERVAL 3 METERS
NATIONAL GEODETIC VERTICAL DATUM OF 1929
CONTROL ELEVATIONS SHOWN TO THE NEAREST 0.1 METER
OTHER ELEVATIONS SHOWN TO THE NEAREST 0.3 METER

THIS MAP COMPLIES WITH NATIONAL MAP ACCURACY STANDARDS

CONVERSION TABLE		DECLINATION DIAGRAM		ADJOINING MAPS		
Meters	Feet	MAGNETIC DECLINATION		1	2	3
1	3.2808	77° 30' 00" W		1	2	3
2	6.5617	77° 30' 00" W		4	5	6
3	9.8425	77° 30' 00" W		7	8	
4	13.1234	77° 30' 00" W				
5	16.4042	77° 30' 00" W				
6	19.6850	77° 30' 00" W				
7	22.9659	77° 30' 00" W				
8	26.2467	77° 30' 00" W				
9	29.5275	77° 30' 00" W				
10	32.8084	77° 30' 00" W				

To convert meters to feet multiply by 3.2808
To convert feet to meters multiply by 0.3048

UTM grid convergence (km) and 1983 magnetic declination (m) at center of map. Diagram is approximate.

ADJOINING MAPS:
1 Framingham
2 Boston South
3 Hull
4 Melville
5 Weymouth
6 Franklin
7 Brockton
8 Whitman

ISBN 0-607-23444-X
9 780607 234442

Topographic Map Symbols

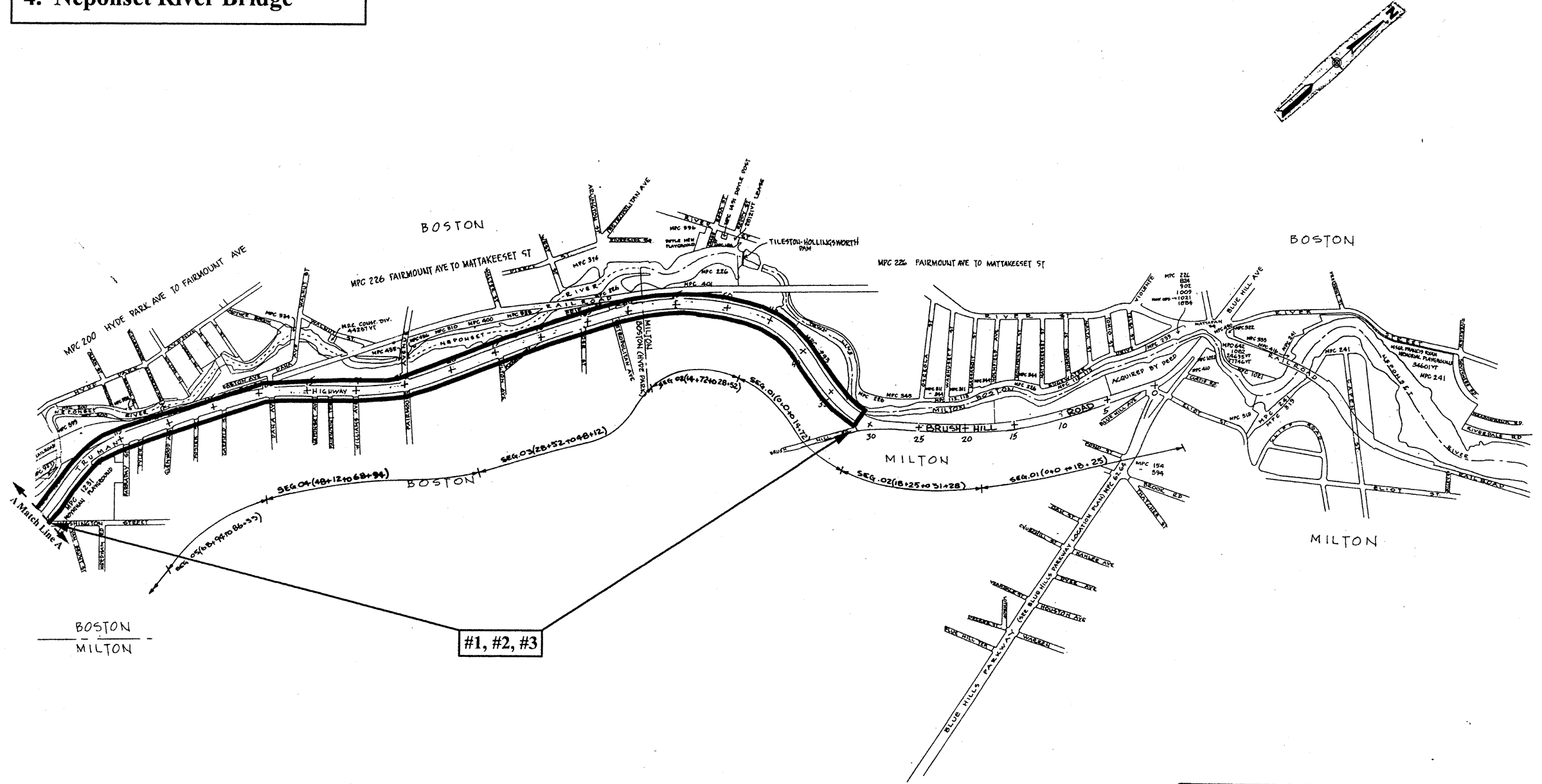
Primary highway, hard surface
Secondary highway, hard surface
Light-duty road, hard or improved surface
Unimproved road; trail
Route marker: interstate, U. S. State
Railroad: standard gauge, narrow gauge
Bridge: drawbridge
Footbridge; overpass; underpass
Build-up area: only selected landmark buildings shown
House; barn; church; school; large structure
Boundary:	
National, with monument
State
County, parish
Civil township, precinct, district
Incorporated city, village, town
National or State reservation, small park
Land grant with monument; found section corner
U. S. public lands survey: range, township, section
Range, township; section line: location approximate
Fence or field line
Power transmission line, located tower
Dam; dam with lock
Cemetery; grave
Compass; picnic area; U. S. location monument
Windmill; water well; spring
Mine shaft; prospect; adit or cave
Control: horizontal station; vertical station; spot elevation
Contours: index; intermediate; supplementary; depression
Distorted surface: strip mine, lava, sand
Bathymetric contours: index; intermediate
Perennial lake and stream; intermittent lake and stream
Rapids; large and small; falls, large and small
Submerged marsh; marsh, swamp
Land subject to controlled inundation; woodland
Stock: range
Orchard; vineyard

A pamphlet describing topographic maps is available on request


FOR SALE BY U.S. GEOLOGICAL SURVEY
P.O. BOX 25286, DENVER, COLORADO 80225

1985

1. Truman Parkway
2. Truman Parkway Median
3. Truman Parkway Tree Allee
4. Neponset River Bridge



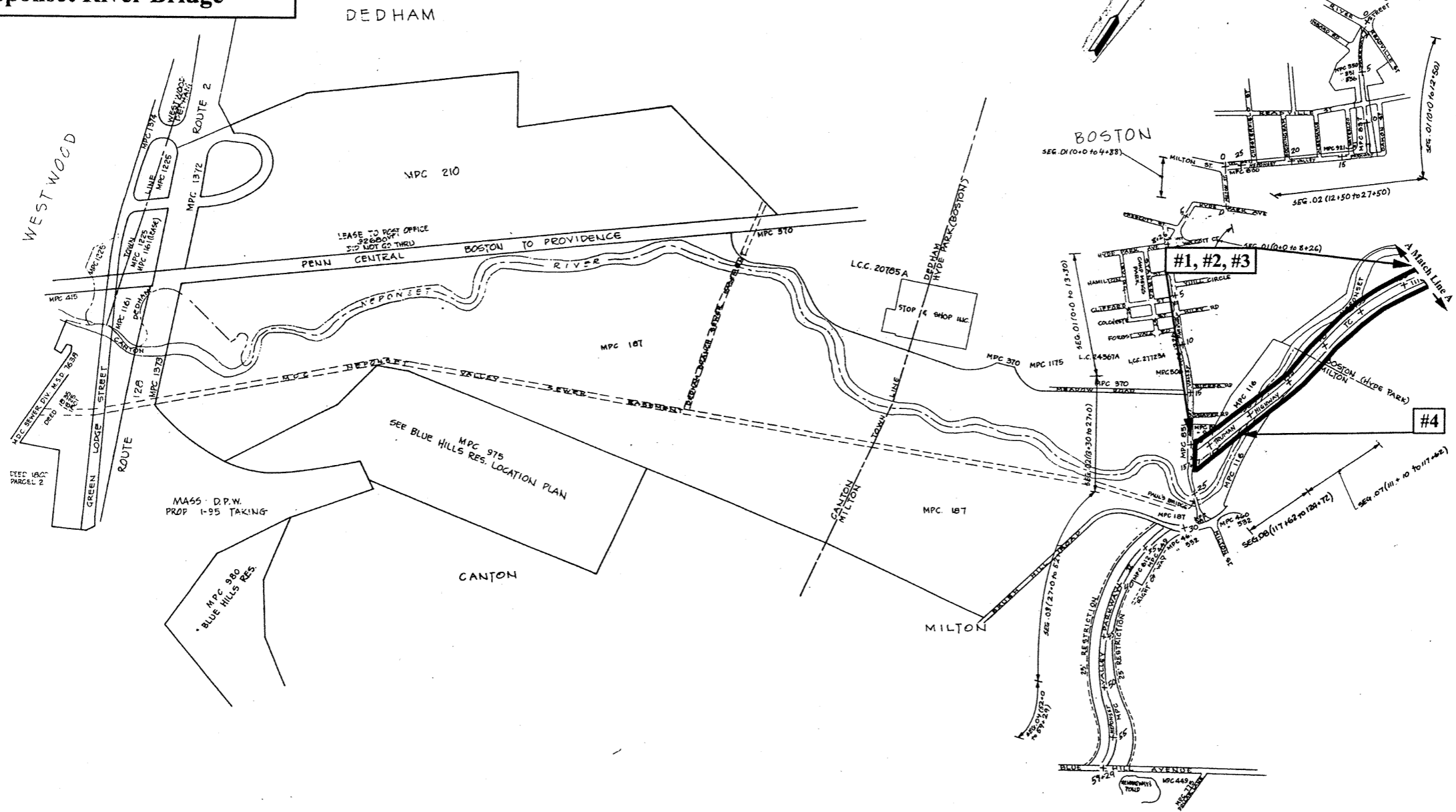
**STATION AND SEGMENT PLAN:
TRUMAN PARKWAY**

COMMONWEALTH OF MASSACHUSETTS METROPOLITAN DISTRICT COMMISSION		
PARKWAY MANAGEMENT SYSTEM - STA. AND SEG. PLAN BLUE HILLS DIVISION		
TRUMAN HIGHWAY - #712 SEG. 01 TO 3		
BRUSH HILL ROAD - #735		
 Vanasse/Hangen Consulting Engineers & Planners 60 Birmingham Parkway, Boston, MA 02135 617/783-7000		
DESIGNED BY VAG	DATE APRIL, 1986	DRAWING NO. BH-10
DRAWN BY NBF	SCALE NOT TO SCALE	JOB NO. 1120
CHECKED BY VAG	SHEET OF 54 56	

10/22/01 OK



1. Truman Parkway
2. Truman Parkway Median
2. Truman Parkway Tree Allee
3. Neponset River Bridge



COMMONWEALTH OF MASSACHUSETTS
METROPOLITAN DISTRICT COMMISSION

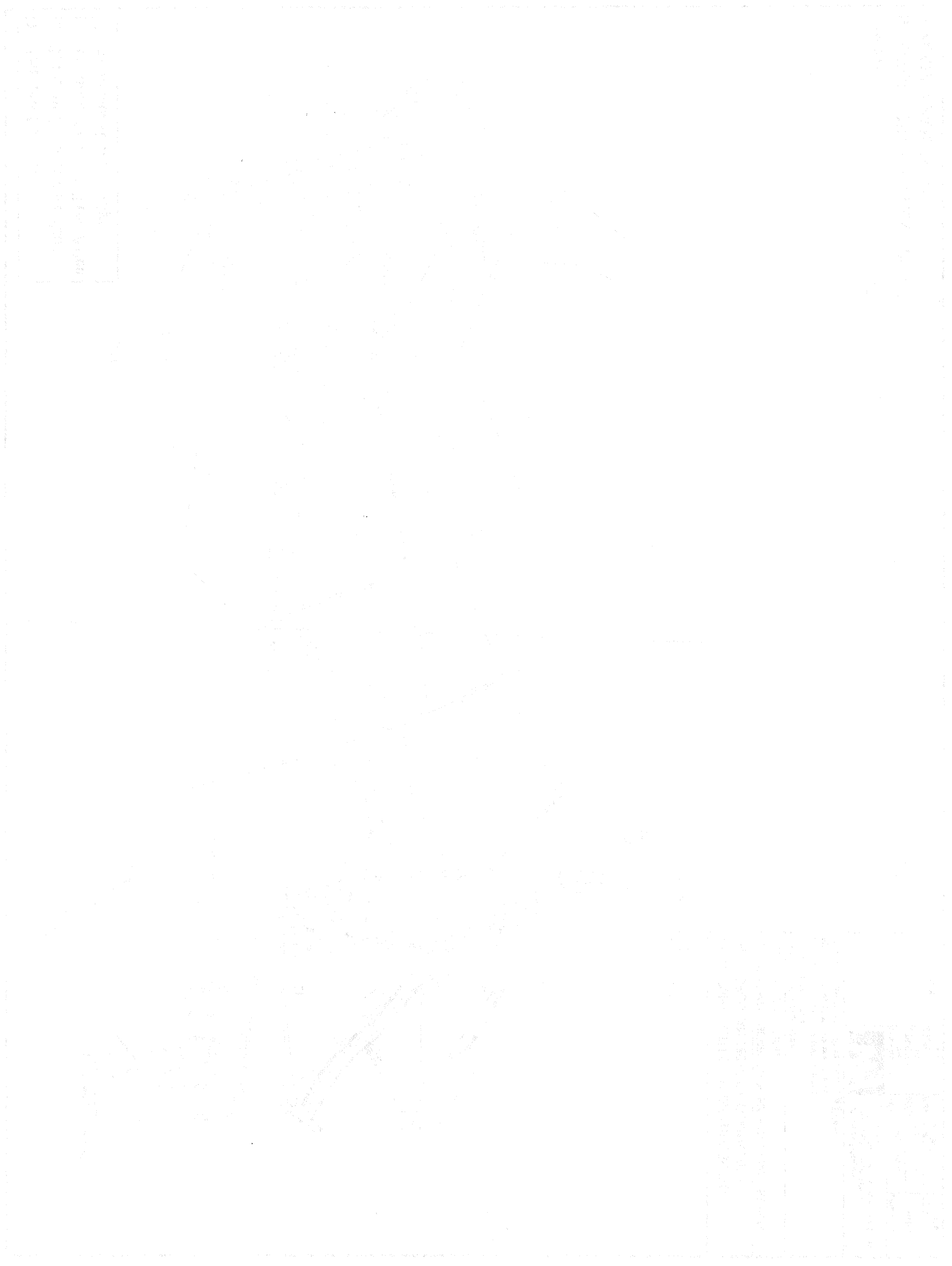
PARKWAY MANAGEMENT SYSTEM - STA. AND SEG. PLAN
BLUE HILLS DIVISION

HYDE PARK AVE. - #726
MILTON STREET - #711
NEPONSET VALLEY PKWY I - #705
NEPONSET VALLEY PKWY II - #706
TRUMAN HIGHWAY - #712 SEG. 06 TO 08

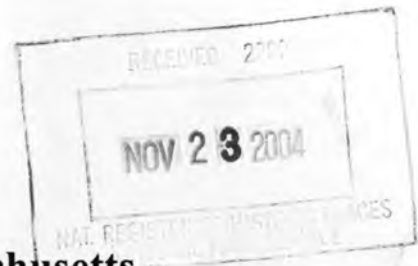
VH	Vanasse/Hangen	
	Consulting Engineers & Planners 60 Birmingham Parkway, Boston, MA 02135 617/783-7000	
	DESIGNED BY VAG	DATE APRIL, 1986
	DRAWN BY NBF	SCALE NOT TO SCALE
CHECKED BY VAG	SHEET OF 1120	DRAWING NO. BH-11

51614X

10/22/04 OC



10/22/04 OC



The Commonwealth of Massachusetts
William Francis Galvin, Secretary of the Commonwealth
Massachusetts Historical Commission

November 10, 2004

Ms. Carol Shull
National Register of Historic Places
Department of the Interior
National Park Service
1201 Eye Street, NW, 8th floor
Washington, DC 20005

Dear Ms. Shull:

Enclosed please find the following nomination:

Truman Parkway, Boston/Milton (Suffolk/Norfolk), MA
Metropolitan Park System of Greater Boston (Parkways) MPS

The nomination was voted eligible by the State Review Board and been signed by the State Historic Preservation Officer. The owners of the property in Milton were notified of pending State Review Board consideration 30 to 45 days before the meeting and were afforded the opportunity to comment. The owners of the property in the Certified Local Government community of Boston were notified of pending State Review Board consideration 60 to 90 days before the meeting and were afforded the opportunity to comment.

We request expedited review of this nomination.

Sincerely,

A handwritten signature in cursive script that reads "Betsy Friedberg".

Betsy Friedberg
National Register Director
Massachusetts Historical Commission

enclosure