

United States Department of the Interior

National Park Service

National Register of Historic Places Registration Form



This form is for use in nominating or requesting determinations for inclusion of historic properties in the National Register of Historic Places or districts. See instructions in *How to Complete the National Register of Historic Places Registration Form* (National Register Bulletin 16A). Complete each item by marking "x" in the appropriate box or by entering the information requested. If any item does not apply to the property being documented, enter "N/A" for "not applicable." For functions, architectural classification, materials, and areas of significance, enter only categories and subcategories from the instructions. Place additional entries and narrative items on continuation sheets (NPS Form 10-900a). Use a typewriter, word process, or computer, to complete all items.

1. Name of Property

historic name Crampton's Gap Historic District

other names/site number MIHP #F-4-017-A; WA-III-176

2. Location

street & number Route 17; Gapland Rd; Mt. Church Rd; Brownsville Pass Rd; Townsend Rd. not for publication

city or town Burkittsville/Brownsville vicinity

state Maryland code MD county Frederick/Washington code 021/043 zip code See Sec. 10

3. State/Federal Agency Certification

As the designated authority under the National Historic Preservation Act, as amended, I hereby certify that this nomination request for determination of eligibility meets the documentation standards for registering properties in the National Register of Historic Places and meets procedural and professional requirements set forth in 36 CFR Part 60. In my opinion, the property meets does not meet the National Register criteria. I recommend that this property be considered significant nationally statewide locally. (See continuation sheet for additional comments.)

7-8-10
Signature of certifying official/Title Date

State or Federal Agency or Tribal government

In my opinion, the property meets does not meet the National Register criteria. (See continuation sheet for additional comments.)

12/13/10
Signature of commenting official/Title Date

State or Federal agency or bureau

4. National Park Service Certification

I hereby certify that the property is:

entered in the National Register.
 See continuation sheet

determined eligible for the National Register.
 See continuation sheet.

determined not eligible for the National Register.

removed from the National Register.

other, (explain:) _____

Signature of the Keeper

Date of Action

1/12/2011

Crampton's Gap Historic District
F-4-017-A; WA-III-176
Name of Property

Frederick/Washington County, Maryland
County and State

5. Classification

Ownership of Property
(Check as many boxes as apply)

- Private
- public-local
- public-State
- public-Federal

Category of Property
(Check only one box)

- building(s)
- district
- site
- structure
- object

Number of Resources within Property
(Do not include previously listed resources in the count.)

Contributing	Noncontributing	
98	135	buildings
1	2	sites
7	12	structures
0	0	objects
106	149	Total

Name of related multiple property listing
(Enter "N/A" if property is not part of a multiple property listing.)

South Mountain Battlefield[s] – September 14, 1862

Number of contributing resources previously listed
In the National Register

71

6. Function or Use

Historic Functions
(Enter categories from instructions)

DOMESTIC/single dwelling

AGRICULTURE/SUBSISTENCE/outbuilding

AGRICULTURE/SUBSISTENCE/agricultural field

TRANSPORTATION/road-related

Current Functions
(Enter categories from instructions)

DOMESTIC/single dwelling

AGRICULTURE/SUBSISTENCE/outbuilding

AGRICULTURE/SUBSISTENCE/agricultural field

TRANSPORTATION/road-related

RECREATION AND CULTURE/outdoor recreation

7. Description

Architectural Classification
(Enter categories from instructions)

OTHER: Early to Mid-19th Century Log

OTHER: Early to Mid-19th Century Stone

OTHER: Timber Frame Pennsylvania-type Barn

Materials
(Enter categories from instructions)

foundation Stone

Walls wood

roof Metal; asphalt

Other Vinyl; aluminum; brick

Narrative Description
(Describe the historic and current condition of the property on one or more continuation sheets.)

United States Department of the Interior
National Park Service

National Register of Historic Places
Continuation Sheet

F-4-017-A; WA-III-176
Crampton's Gap Historic District
name of property

Frederick/Washington County, Maryland
county and state

Section number 7 Page 1

Physical Description

During the September 14, 1862 Battle of South Mountain the secondary push of Union troops took place over the road leading over the mountain at Crampton's Gap and the adjoining woodlots and fields. The collection of cultural resources associated with the Battle of South Mountain which occurred on September 14, 1862. These resources are described on the attached Inventory Table and are designated as contributing or non-contributing to the September 14, 1862 period of significance as part of the Multiple Property Documentation Form "South Mountain Battlefield[s] – September 14, 1862."

The Crampton's Gap Historic District is bounded on the west by the 800 foot contour line west of the crest of South Mountain. The west boundary is inclusive of the state park boundary. The district extends to the east where it is generally bounded by an unnamed tributary (west) of Broad Run. The district extends as far south as Ahalt Distillery Road. The boundary extends north to a point approximately ¼ mile south of Locust Valley.

The district is comprised of steep mountain terrain on the west and much more level valley/piedmont on the east side. There is a wide, relatively level area running down the center of the top of the mountain. Most of the steeper areas are heavily vegetated with trees such as hemlock, oak, hickory, and pine and once included an abundance of American chestnut (Baker 2003). Early farmers have long ago cleared the valley areas of natural vegetation for fire wood and for growing crops.

The Crampton's Gap Historic District was predominately rural during the Civil War; the town of Burkittsville (listed in the NR 11/30/1975, with 70 contributing resources), was the largest town in the area. In 1860, the Federal Census listed numerous farmers and trades people residing in "Burkittsville Post Office" area. The Crampton's Gap Historic District still remains largely rural today. Many of the farms, houses, and outbuildings are still scattered throughout the landscape, although, a few post-Civil War (mostly ranch-style) homes can be found in small pockets along some of the main roads. Buildings of this later era include wood frame houses with Gothic-Revival influences built soon after the close of the war, wood frame farmhouses from the late 18th and early 19th century, and a few bungalows built in the 1910s and 1920s. Some more recent buildings (1950s to present) are also scattered throughout the area; these are primarily one-story ranch-style houses.

Dwellings built prior to the Civil War primarily consist of small log houses with German siding and equally small domestic and agricultural outbuildings which include some very small bank barns, summer kitchens, smokehouses, springhouses, chicken houses, corn cribs, etc. These smaller houses are found predominately on the steep slopes of South Mountain. One can still see the contrast of these smaller subsistence farms as compared with larger scale farms reflected in the bigger buildings in the valley area just east of the mountain. Other houses in the Crampton's Gap Historic District include early to mid 19th century two-story stone houses and two-story brick houses. One of the larger houses belonging to Martin Shafer (1606 Gapland/Huffer Road) served as Union General William B. Franklin's headquarters during the battle. The Resurrection German Reformed Church in Burkittsville

Crampton's Gap Historic District
F-4-017-A; WA-III-176
Name of Property

Frederick/Washington County, Maryland
County and State

as well as many houses in town served as hospitals for Union and Confederate wounded during the battle and for months afterward (Reese 1994).

Outside of Burkittsville, commercial buildings were few in the area of South Mountain during the Civil War. The 1860 census of the area associated with the "Burkittsville Post Office" lists several people occupied in trades such as wagon makers, blacksmiths, cabinet makers, shoemakers, tailors, and merchants who presumably operated businesses within or very close to Burkittsville. Few buildings on the present South Mountain landscape are thought to have been commercial. None were noted in the Crampton's Gap Historic District during the current survey.

Stone walls were also part of the South Mountain landscape. Farmers constructed the dry laid stone walls of local rock to delineate the boundaries of their fields and contain livestock. Both Confederate and Union soldiers used the walls for defense during the Battle of South Mountain, and the walls were important in the Confederates' hold of the mountain for the better part of the day. Many of these stone walls are still in place over much of the battlefield.

Many of the present-day roads and paths traversing the Crampton's Gap Historic District landscape were in existence before the Battle of South Mountain. A few of the old roads are still unpaved or exist only as trails or traces through the woods, however, the majority of the roads have been paved and are currently in use. Most historic roads appear to closely follow their original routes across the battlefield landscape. Several dirt or gravel driveways have recently been added to provide access to new homes.

Old road beds known to have been significant to the battle include:

- Mountain Church Road and stone walls (F-2-99)
- Gapland Road, from Burkittsville to summit (F-2-100)
- Arnoldtown Road
- Burkittsville Road (State Route 17)
- Brownsville Pass Road

There are no known archeological sites within the Crampton's Gap Historic District. The battlefield within the Crampton's Gap Historic District where Union General William Franklin and his VI Corps forced the retreat of heavily outnumbered Confederate forces, is considered a historic site.

The Crampton's Gap Historic District includes 98 Contributing Buildings (70 of which are located within the NR-listed Burkittsville Historic District); 7 Contributing Structures; 1 Contributing Site; 135 Non-contributing Buildings; 12 Non-contributing Structures including the National Register-listed War Correspondents Memorial Arch, WA-II-117; and 2 Non-contributing Sites (cemeteries). See attached Resource Inventory Table for a full inventory of Contributing and Non-contributing resources within the Crampton's Gap Historic District.

Integrity

Although there are a large number of non-contributing resources within the district boundary, the visual landscape and significant contributing resources retain remarkable integrity to the September 14, 1862 appearance. Crampton's Gap Historic District possesses integrity of location. The District encompasses the area surrounding Crampton's Gap in which the advance of federal troops and fighting took place on September 14, 1862. The gap also possess integrity of setting: topographic features and vegetation are similar to the 1862 setting of South Mountain. The Crampton's Gap Historic District

Crampton's Gap Historic District
F-4-017-A; WA-III-176

Frederick/Washington County, Maryland

Name of Property

County and State

also retains the feeling and association of the historic battlefield. The area surrounding the gap is still largely rural and contains many wooded areas as well as numerous farms of various sizes which were present during the Civil War. Many of the roads present and used during the Battle of South Mountain still follow their historic routes. Many stone walls used by soldiers for defense during the battle still stand in their original alignments across the fields.

Crampton's Gap Historic District
F-4-017-A; WA-III-176

Frederick/Washington County, Maryland

Name of Property

County and State

8. Statement of Significance

Applicable National Register Criteria

(Mark "x" in one or more boxes for the criteria qualifying the property for National Register listing.)

- A** Property is associated with events that have made a significant contribution to the broad patterns of our history.
- B** Property is associated with the lives of persons significant in our past.
- C** Property embodies the distinctive characteristics of a type, period, or method of construction or represents the work of a master, or possesses high artistic values, or represents a significant and distinguishable entity whose components lack individual distinction.
- D** Property has yielded, or is likely to yield, information important in prehistory or history.

Criteria Considerations

(Mark "x" in all the boxes that apply.)

Property is:

- A** owned by a religious institution or used for religious purposes.
- B** removed from its original location.
- C** a birthplace or grave.
- D** a cemetery.
- E** a reconstructed building, object, or structure.
- F** a commemorative property.
- G** less than 50 years of age or achieved significance within the past 50 years.

Narrative Statement of Significance

(Explain the significance of the property on one or more continuation sheets.)

9. Major Bibliographical References

Bibliography

(Cite the books, articles, and other sources used in preparing this form on one or more continuation sheets.)

Previous documentation on file (NPS):

- preliminary determination of individual listing (36 CFR 67) has been requested
- previously listed in the National Register
- previously determined eligible by the National Register
- designed a National Historic Landmark
- recorded by Historic American Buildings Survey # _____
- recorded by Historic American Engineering Record # _____

Areas of Significance

(Enter categories from instructions)

Military

Period of Significance

September 14, 1862

Significant Dates

September 14, 1862

Significant Person

(Complete if Criterion B is marked above)

N/A

Cultural Affiliation

N/A

Architect/Builder

N/A

United States Department of the Interior
National Park Service

National Register of Historic Places
Continuation Sheet

F-4-017-A; WA-III-176
Crampton's Gap Historic District
name of property

Frederick/Washington County, Maryland
county and state

Section number 8 Page 1

Summary of Significance

The Crampton's Gap Historic District meets registration requirements outlined in Section F of the Multiple Property Documentation Form entitled "South Mountain Battlefield[s] – September 14, 1862" The District is eligible for the National Register under Criterion A in the area of military history for its association with the Battle of South Mountain, which took place on September 14th 1862. The most southern point of fighting that day took place on the fields and roads leading up to Crampton's Gap near Burkittsville. Here, after hours of preparation, Union General William Franklin and his VI Corps forced the evening retreat of the heavily outnumbered Confederate forces. But Franklin's delay allowed the Confederate's at Harpers Ferry their victory and capture of the Union garrison there. The Battle of South Mountain was significant in that on September 14, 1862, only three days prior to the Battle of Antietam at nearby Sharpsburg, a small number of Confederates briefly held off Union troops in order for Lee's divided army to reassemble. The major day-long battle took place in response to the loss of Confederate General Robert E. Lee's Special Order 191, his command to split the Southern army in order to capture the Union garrison at Harper's Ferry and its supply of weapons and ammunition. The discovery of those orders prompted Union General George McClellan's uncharacteristic boldness in his pursuit of the Confederate Army on South Mountain. The period of significance, as established in the Multiple Property Documentation Form "South Mountain Battlefield[s] – September 14, 1862" is limited to the day of the battle, September 14, 1862. Therefore, only resources which were present on that day are considered contributing.

Resource History

General McClellan's orders to Major General William B. Franklin, commanding the 6th Corps of the Army of the Potomac, were to seize Crampton's Gap and when that was completed to continue on to Rohrersville on the west side of the mountain. There Franklin's forces were to take the crossroads community with the objective of cutting off, destroying or capturing McLaws' two divisions, thereby relieving the Harpers Ferry garrison (Sears 1987:12). When Franklin received his orders, he was some twelve miles east of Burkittsville, the small Frederick County village on the east side of South Mountain at Crampton's Gap. General Franklin set up his headquarters in the home of Dr. John D. Garrett southeast of the quiet village of **Burkittsville**. After several hours consumed in moving his corps to the base of the mountain, Franklin's force was shelled by Confederate guns placed on the Burkittsville Road (**Gapland Road**) and on the **Brownsville Road** just to the south. This shelling led Franklin to conclude that there was a sizable Confederate force defending the pass:

The enemy was strongly posted on both sides of the road, which made a steep ascent through a narrow defile, wooded on both sides, and offering great advantages of cover and

Crampton's Gap Historic District
F-4-017-A; WA-III-176

Frederick/Washington County, Maryland

Name of Property

County and State

position. Their advance was posted near the base of the mountain, in the rear of a stone wall, stretching to the right of the road at a point where the ascent was gradual, and for the most part over open fields. Eight guns had been stationed on the road, and at points on the sides and summit of the mountain to the left of the pass. (in Luvaas & Nelson 1987:77)

In fact, the Confederate defense consisted of about 1,000 men under the direction of Colonel Thomas T. Munford and Colonel Parham, while Franklin's two divisions totaled 12,300 men (Sears 1987:14).

The Union advance against the Confederates at Crampton's Gap took place primarily to the north and west of Burkittsville. Facing the Confederate defensive line behind the **stone walls of Mountain Church Road**, the Union forces used the open fields to the east to build up for a direct assault. The **Wipp farm** and adjoining **Miller farm** (see 1858 Bond map) served as the staging area for General Henry Slocum's Division of the VI Corps. Colonel Joseph J. Bartlett's Brigade, straddling the Wipp Farm formed the right flank of the Federal line; Newton's Brigade formed the center covering the Miller Farm fields; and Torbert's Brigades were on the left bordering the Burkittsville Road (see Plate 27, Official Military Atlas). Recalled Colonel Joseph J. Bartlett: "It being decided that the attack should be made on the right and flank of the road leading over the mountains [Gapland Rd.], I was ordered to lead the column...to a large field near its base, where the column of attack was to be formed..." (in Luvaas & Nelson 1987:79). Franklin placed the First Maryland Battery "on the left and to the rear of the village," and "Smith's division was placed in reserve on the east side of the village...Captain Ayres' battery, of this division, was posted on a commanding ground to the left of the reserves..." (Ibid:77)

After a three hour delay, a result of General Franklin's indecision, Slocum sent his men on their charge (Sears 1983:147). Bartlett continued: "A moment's consultation with Colonel Torbert decided us to make the charge immediately at a double-quick...the command given to 'Charge,' and our whole line advanced with cheers, rushing over the intervening space to the stone wall and routing the enemy." (in Luvaas & Nelson 1987: 79-80) With the Confederate line along Mountain Church Road thus engaged by Slocum's Division, General Franklin "...directed General Brooks' brigade, of Smith's division, to advance upon the left of the road [Gapland Rd.], and dislodge the enemy from the woods upon Slocum's flank." (O.R., XIX, Pt I, p. 374) Brooks' Brigade moved out across the fields of the **Arnold Farm** where the Vermont regiments first met resistance at the stone wall marking the western edge of that farm at the Burkittsville Road. As Slocum's forces took the wall on Mountain Church Road, Brooks' Brigade advanced up the Burkittsville Road completing the rout. Confederate General Paul Semmes was at that moment coming up the road to Crampton's Gap on the west side of the mountain when he "encountered fugitives from the battle-field...the troops were met pouring down the road and through the wood, in great disorder..." (in Luvaas & Nelson 1987:81) Semmes reformed the line at the **Brownsville Gap** a mile to the south, but "the enemy made no further advance." (Ibid)

The sweep across the fields below the gap was successful; within hours Crampton's Gap belonged to the Federals. But Franklin's orders were not entirely fulfilled. Commanding General George B. McClellan's objective of freeing Harpers Ferry from the grip of the Confederates was postponed by Franklin at the crest of the gap, sealing the fate of the Union garrison at Harpers Ferry, and setting the stage for the September 17th battle at Sharpsburg across the Antietam Creek.

United States Department of the Interior
National Park Service

National Register of Historic Places
Continuation Sheet

F-4-017-A; WA-III-176
Crampton's Gap Historic District
name of property

Frederick/Washington County, Maryland
county and state

Section number 9 Page 1

Major Bibliographic References

- Frye, Dennis E. National Register draft nomination, South Mountain Battlefields, 1986.
- Luvaas, Jay and Harold W. Nelson, eds. The U.S. Army War College Guide to the Battle of Antietam: The Maryland Campaign of 1862. Carlisle, PA: South Mountain Press, 1987.
- Reese, Timothy J. "Letters from the Battlefield: Crampton's Gap, September 14, 1862." South Mountain Heritage Society, Maryland, 1994.
- Sears, Stephen W. "Fire on the Mountain," Blue and Gray Magazine December-January, 1987.
- Sears, Stephen W. Landscape Turned Red: The Battle of Antietam, New Haven and New York: Ticknor and Fields, 1983.
- U.S. Army, "Maps of Frederick County, Maryland," 1861.
- United States War Department. The War of the Rebellion: A Compilation of the Official Records of the Union and Confederate Armies, Washington, DC: Gov't Printing Office, series 1, vol. 19, parts 1 and 2, 1880-1901.
- Woodward-Clyde. South Mountain and Maryland Heights Battlefields: Historic Resources Survey, Gaithersburg, Maryland, May, 1998.

Maps

- Battles and Leaders of the Civil War, Vol II, p.568.
- Bond, Isaac. Map of Frederick County, 1858.
- Engineers Map, 1862, National Register draft nomination, South Mountain Battlefields F-4-17-A, 1986.
- Snedden, Robert Knox. "The Battle of Crampton's Gap: 5 miles south of Turner's Gap, South Mountain, Md. September 14th 1862." Library of Congress, Mss5: 7 Sn237:1 p. 237 (Robert Knox Sneden Diary, Virginia Historical Society).
- U.S. Army Corps of Topographical Engineers. "South Mountain showing the positions of the forces of the United States and the enemy..." 1872. Library of Congress, G3844.Bo35W5 1872 .U5 CW 258. (This map is also in The Official Military Atlas of the Civil War, Plate 27, Gramercy Books, New York, 1983.)

Crampton's Gap Historic District

Frederick/Washington County, Maryland

F-4-017-A; WA-III-176

Name of Property

County and State

10. Geographical Data

Acreage of Property Approx. 3494 acres

UTM References

(Place additional UTM references on a continuation sheet.)

1	1 8	2 7 1 8 6 0	4 3 6 6 2 2 0	3	1 8	2 7 3 9 4 5	4 3 6 5 6 5 0
	Zone	Easting	Northing		Zone	Easting	Northing
2	1 8	2 7 3 1 5 5	4 3 6 6 3 7 0	4	1 8	2 7 5 7 2 0	4 3 6 2 7 5 0
	Zone	Easting	Northing		Zone	Easting	Northing

See continuation sheet

Verbal Boundary Description

(Describe the boundaries of the property on a continuation sheet.)

Boundary Justification

(Explain why the boundaries were selected on a continuation sheet.)

11. Form Prepared By

name/title Paige Phifer, field technician; Edie Wallace, historian; Paula S. Reed, architectural historian

organization Paula S. Reed & Associates, Inc. date March 14, 2008 (rev. 6/10)

street & number 1 W. Franklin St., Suite 300 telephone 301-739-2070

city or town Hagerstown state Maryland zip code 21740

Additional Documentation

Submit the following items with the completed form:

Continuation Sheets

Maps

A **USGS map** (7.5 or 15 minute series) indicating the property's location.

A **Sketch map** for historic districts and properties having large acreage or numerous resources.

Photographs

Representative **black and white photographs** of the property.

Additional items

(Check with the SHPO or FPO for any additional items)

Property Owner

(Complete this item at the request of SHPO or FPO.)

name various

street & number _____ telephone _____

city or town _____ state _____ zip code _____

Paperwork Reduction Act Statement: This information is being collected for applications to the National Register of Historic Places to nominate properties for listing or determine eligibility for listing, to list properties, and to amend existing listings. Response to this request is required to obtain a benefit in accordance with the National Historic Preservation Act, as amended (16 U.S.C. 470 *et. seq.*). A federal agency may not conduct or sponsor, and a person is not required to respond to a collection of information unless it displays a valid OMB control number.

Estimated Burden Statement: Public reporting burden for this form is estimated to average 18.1 hours per response including the time for reviewing instructions, gathering and maintaining data, and completing and reviewing the form. Direct comments regarding this burden estimate or any aspect of this form to Keeper, National Register of Historic Places, 1849 "C" Street, N.W., Washington, DC 20240.

United States Department of the Interior
National Park Service

National Register of Historic Places
Continuation Sheet

F-4-017-A; WA-III-176
Crampton's Gap Historic District
name of property

Frederick/Washington County, Maryland
county and state

Section number 10 Page 1

Geographical Data

Zip Codes: The district overlaps the following zip codes: 21779, 21758, 21718, 21769

Verbal Boundary Description

This district covers an area of West Central Maryland in the Blue Ridge Mountain Range known as South Mountain. The boundaries which include cultural resources present during the military action surrounding Crampton's Gap during the Civil War Battle of South Mountain. The boundary includes land belonging to South Mountain State Park, the National Park Service, and numerous private properties along the crest of South Mountain and on the eastern and western slopes. The area includes portions of both Frederick and Washington counties, Maryland.

Beginning at a point in Washington County where the 800' contour line on the west slope of South Mountain, on the Keedysville USGS Quadrangle map intersects with a fence line at or near 39° 25' 2.36" N. latitude and 77° 38' 53.04" W. longitude and proceeding in a straight line to the east to a point at or near 39° 25' 4.35" N. latitude and 77° 38' 13.20 W. longitude on the east slope of South Mountain in Frederick County; then turning to the southeast and following South Mountain State Park boundary in part to a point on the east side of Mountain Church Road at or near 39° 24' 58.51 N. latitude and 77° 38' 13.20" W. longitude; then turning to the south to a point at or near 39° 24' 46.83" N. latitude and 77° 37' 51.68" W. longitude; then turning to the southeast and crossing Arnoldtown Road at a point at or near 39° 24' 45.34" N. latitude and 77° 37' 47.86" W. longitude and continuing to an intermittent stream bed for an unnamed tributary of Broad Run; then following the tributary in a southeasterly direction to and across Maryland Route 17 and to and across Catholic Church Road to the confluence with Broad Run at or near 39° 23' 11.08" N. latitude and 77° 36' 16.43" W. longitude; then turning to the southwest and following an unnamed tributary and drainage southwestward to Gapland (Huffer) Road at or near 39° 22' 53.18" N. latitude and 77° 36' 44.52" W. longitude; then following Gapland (Huffer) Road in a northwesterly direction to a culvert over an unnamed tributary at or near 39° 23' 3.99" N. latitude and 77° 37' 12.24" W. longitude; then turning southwest and following the tributary to a fence line and following the fence line southwestly to Ahalt Distillery Road at or near 39° 22' 44.61" N. latitude and 77° 37' 47.77" W. longitude; then following Ahalt Distillery Road west to Maryland Route 17; then continuing west to meet a southern boundary line of South Mountain State Park and continuing with the boundary line to the Washington County – Frederick County line, and continuing westward to a point which is also a corner in the South Mountain State Park western boundary at or near 39° 22' 42.50" N. latitude and 77° 39' 18.43 W. longitude; then turning northward and following the western boundary of South Mountain State Park to and along the east side of Shaff Road to its intersection with Gapland Road; then following the park boundary along Gapland Road to the 800' contour line as shown on the Keedysville USGS Quad sheet; and following the 800' contour line in a northerly direction to its crossing of Townsend Road; and continuing with the 800' contour line northward to the place of beginning.

F-4-017-A; WA-III-176

Frederick/Washington County, Maryland

Crampton's Gap Historic District

Name of Property

County and State

Boundary Justification

Boundaries were defined by the use of roads, topographic contour lines, natural drainages, as well as property lines of the State Park and other private lands. They include locations of significant events which took place during the Battle of South Mountain on September 14, 1862, as shown on the attached historic battle maps: "Battle-Fields of South Mountain," Sept. 14, 1862, Army Corps of Topographical Engineers (Official Atlas, Plate 27), and "Battle of Crampton's Gap," Sept. 14, 1862 (from the Robert Knox Diary, LOC digital collection). The boundary also incorporates the Burkittsville National Register Historic District.

UTMs Continued:

Zone 18

5. E 275000
N 4362120
6. E 273370
N 4361890
7. E 272690
N 4361850
8. E 271260
N 4361930

**Crampton's Gap Historic District (F-4-017-A; WA-III-176), Frederick and Washington Counties, Maryland
Resource Inventory Table**

NR #	Field #	Property Name	Description	C Dist	C Bdg	NC Bdg	C Str	NC Str	C Ob	NC Ob	C Site	NC Site	Notes
1	76	Crampton's Gap Shelter	3-sided log walled camp shelter with concrete and stone foundation	0	0	1	0	0	0	0	0	0	Park rustic style, 20 th c.
2	78	Crampton's Gap Outhouse	Frame privy with shed roof	0	0	1	0	0	0	0	0	0	20 th c.
3	79	60?? (E side) Gapland Rd	A-frame house, wood siding, asphalt shingle roof	0	0	1	0	0	0	0	0	0	Modern
4	80	Ceres Bethel African Methodist Episcopal Church & Cemetery	One-story frame house, composition siding (over clapboard?),	0	0	1	0	0	0	0	0	1	F-2-055; ca.1870
5	81	6030 Gapland Rd	3 part log house on stone foundation with vinyl siding	0	1	0	0	0	0	0	0	0	Mid 19 th c.
6	82	6025 Gapland Rd	One-story brick ranch-style house	0	0	1	0	0	0	0	0	0	20 th c.
7	83	6019 Gapland Rd	1 ½ story Log house, Window-Door-Window, central brick chimney	0	0	1	0	0	0	0	0	0	Late 19 th c.
8	84	West Side Gapland Rd	Pre-fabricated ranch-style house	0	0	1	0	0	0	0	0	0	20 th c.
9	85	Off E side Gapland Rd	Modern brick ranch-style house	0	0	1	0	0	0	0	0	0	20 th c.
10	86	6000B Gapland Rd	1 ½ story stone house	0	2	0	0	0	0	0	0	0	ca.1840
11	87	6000A Gapland Rd	Davis Description: 2-story house (former barn?), Stone end walls, Board and batten shed	0	2	0	0	0	0	0	0	0	Not accessible during this project
12	88	(Address unk.) Mountain Church Rd	Stone 2 story house with possible log and stone additions	0	1	1	0	0	0	0	0	0	Concrete Block barn with Gambrel roof ca.1840
13	89	6022 Mountain Church Rd	1 ½ story vinyl-sided log house, raised stone basement	0	1	0	0	0	0	0	0	0	Mid-19 th century
14	90	6038 Mountain Church Rd	Partial brick siding, split level frame house	0	0	1	0	0	0	0	0	0	1970s

C Dist-Contributing District
C Bdg-Contributing Building

C Str-Contributing Structure

C Ob-Contributing Object

C Site-Contributing Site

**Crampton's Gap Historic District (F-4-017-A; WA-III-176), Frederick and Washington Counties, Maryland
Resource Inventory Table**

NR #	Field #	Property Name	Description	C Dist	C Bdg	NC Bdg	C Str	NC Str	C Ob	NC Ob	C Site	NC Site	Notes
						NC Bdg-Non-Contributing Building	NC Str-Non-Contributing Structure	NC Ob-Non-Contributing Object	NC Site-Non-Contributing Site				
15	91	6040 Mountain Church Rd	Possible log house with aluminum siding, Stone foundation	0	0	1	0	0	0	0	0	0	late 19 th c.
16	92	6041 Mountain Church Rd	Not Accessible-Locked gate	0	U	U	U	U	U	U	0	0	Boordy Vineyards
17	93	6042 Mountain Church Rd	2-story Stone house; 3-part dormer, frame addition on N. side	0	1	3	0	0	0	0	0	0	Mid 19 th c.
18	94	6100 Mountain Church Rd	Modern block house with vinyl-siding	0	0	1	0	0	0	0	0	0	20 th c.
19	95	6104 Mountain Church Rd	2-Story Frame, Cross-Gable house	0	0	3	0	0	0	0	0	0	ca. 1870
20	96	6114 Mountain Church Rd	2-story, 3-bay frame, cross-gable house, separate garage	0	0	1	0	1	0	0	0	0	Projecting polygonal bay; late 19 th c.
21	97	Mountain Church Rd	New Large frame 2-story house	0	0	1	0	0	0	0	0	0	Unfinished
22	98	6118 Mountain Church Rd	2-story frame house, turned porch posts	0	0	1	0	0	0	0	0	0	Ca.1900
23	99	6203 Mountain Church Rd	2-story frame, cross-gable house; 2 chicken houses, garage, bank barn	0	0	5	0	0	0	0	0	0	ca. 1870
24	100	6203B Mountain Church Rd	Aluminum single-wide trailer	0	0	1	0	0	0	0	0	0	20 th c.
25	101	6218(?) Mountain Church Rd	2-story stone house, with Gambrel roof,	0	1	0	0	0	0	0	0	0	early 20 th century; "Bears Den"
26	102	Widow Tritt House, 6220 Mt. Church Rd.	1 ½ story log house with 2 additions	0	1	5	0	0	0	0	0	0	F-2-098; mid 19 th c.
27	103	6124 Mountain Church Rd	Two-story 3 bay frame house, vinyl siding and frame addition	0	0	1	0	0	0	0	0	0	mid-late 19 th c.
28	104	"Forest"/Miller Farmstead 6229A & 6229B, Mt. Church Rd	2-story brick farm house w/ 2 barns, 3 silos, and 2 domestic outbldgs.	0	5	4	0	3	0	0	0	0	Down driveway off East side of road. F-2-088
29	106	Wipp Farm-Char Mar Dairy, 6319	Late 18 th /early 19 th century stone house, L-shaped brick house,	0	3	1	0	6	0	0	0	0	F-2-097; on Isaac Bond map of Frederick Co, 1858

Crampton's Gap Historic District (F-4-017-A; WA-III-176), Frederick and Washington Counties, Maryland
Resource Inventory Table

NR #	Field #	Property Name	Description	C Dist	C Bdg	NC Bdg	C Str	NC Str	C Ob	NC Ob	C Site	NC Site	Notes
		Mt Church Rd.	ca.1850, 19 th century barn										
30	107	West side of Mountain Church Rd.	2-story log house, wood shingle siding, 6/6 windows, central brick chimney, deteriorating	0	1	0	0	0	0	0	0	0	On Isaac Bond map of Frederick Co, 1858
31	108	W. side Mountain Church Rd	Stone foundation; standing Frame bank barn	0	0	1	1	0	0	0	0	0	Late 19 th c.
32	109	6500 Mountain Church Road	2-story frame house, L-shaped, 1 st story porch	0	0	1	0	0	0	0	0	0	ca.1870
33	110	650(?) Mountain Church Road	1-story brick ranch-style house; Concrete block garage	0	0	2	0	0	0	0	0	0	20 th c.
34	111	6507 Mountain Church Road	1 ½ story log house, 5 bay, 2 entry, vinyl siding	0	0	1	0	0	0	0	0	0	3 newer dormers; late 19 th c.
35	112	65?? Mountain Church Rd (West side)	3 part, possible log house	0	1	0	0	0	0	0	0	0	Mid 19 th c.
36	113	65?? Mountain Church Rd (West Side)	2-story frame (?) house with standing seam metal roof	0	0	1	0	0	0	0	0	0	Late 19 th c.
37	114	6518 Mountain Church Road	Modern brick bottom, frame top house	0	0	1	0	0	0	0	0	0	20 th c.; Corner Arnoldtown Rd
38	116	1095 Arnoldtown Rd	Possibly historic- (inaccessible)	0	U	U	U	U	U	U	0	0	Behind 6518 Mtn Ch Rd
39	117	1029 Arnoldtown Rd	1-story stone house, 3 bay, interior stone end chimney	0	1	0	0	0	0	0	0	0	1840-1850
40	118	1038 Arnoldtown Rd	2-story log house with exposed stone basement, vinyl siding, stone barn behind house	0	2	0	0	0	0	0	0	0	ca.1850
41	119	1044 Arnoldtown Rd	1-story log house	0	0	1	0	0	0	0	0	0	20 th c.
42	120	1053 Arnoldtown Rd	1-story gray vinyl-sided modern house	0	0	1	0	0	0	0	0	0	20 th c.
43	121	1055Arnoldtown Rd	1-story white house, standing seam metal roof, brick interior end chimney	0	0	3	0	0	0	0	0	0	Late 19 th c.; E side Arnoldtown Rd;

**Crampton's Gap Historic District (F-4-017-A; WA-III-176), Frederick and Washington Counties, Maryland
Resource Inventory Table**

NR #	Field #	Property Name	Description	C Dist	C Bdg	NC Bdg	C Str	NC Str	C Ob	NC Ob	C Site	NC Site	Notes
44	122	1059 Arnoldtown Rd	2-story log house w/vinyl siding, salt-box style roof; summer kitchen	0	2	0	0	0	0	0	0	0	Mid 19 th c.
45	123	105? Arnoldtown Rd	Log house with central brick chimney; Shingle roof (behind 124)	0	0	1	0	0	0	0	0	0	Late 19 th century
46	124	105? Arnoldtown Rd	Modern 1-story frame house; Modern shed may have been built over original house foundation	0	0	2	0	0	0	0	0	0	20 th c.
47	125	1054 Arnoldtown Road	Vinyl-sided log house with addition;	0	0	1	0	0	0	0	0	0	late 19 th century with 20 th century additions
48	126	1056? (south of 1054) Arnoldtown Road	Deteriorated log house, asphalt siding, 2 over 2 windows	0	0	1	0	0	0	0	0	0	Late 19 th c.
49	127	1095 Arnoldtown Road	Tan vinyl-sided house, poss. Log	0	0	1	0	0	0	0	0	0	Late 19 th c.
50	128	6608 Mountain Church Rd	2-story frame house with asbestos siding	0	0	1	0	0	0	0	0	0	20 th c.; Corner Arnoldtown Rd
51	129	1109 Arnoldtown Rd	1 story frame ranch-style house, vinyl and rock siding	0	0	1	0	0	0	0	0	0	20 th c.
52	130	1113 Arnoldtown Rd	Newer rock-sided gambrel roof house	0	0	1	0	0	0	0	0	0	20 th c.
53	131	6605 Mountain Church Road	1 story blue, ranch-style house	0	0	1	0	0	0	0	0	0	20 th c.
54	132	6614 Mountain Church Road	2 Story frame or log, 2 interior end chimneys, 2/2 sash	0	0	3	0	0	0	0	0	0	Log smoke house and barn All late 19 th c.
55	140	20812 Gapland Road	Modern Stone-sided house	0	0	1	0	0	0	0	0	0	20 th c.
56	141	20808 Gapland Road	Small modern house (not fully visible from rd)	0	0	1	0	0	0	0	0	0	20 th c.
57	142	20752 Gapland Road	1 ½ story modern frame house, precast concrete foundation	0	0	1	0	0	0	0	0	0	20 th c.
58	177	1131 Arnoldtown Road	Brick & vinyl-sided ranch-style house	0	0	1	0	0	0	0	0	0	20 th c.
59	179	1133 Arnoldtown	Vinyl-sided double-wide mobile	0	0	1	0	0	0	0	0	0	20 th c.

**Crampton's Gap Historic District (F-4-017-A; WA-III-176), Frederick and Washington Counties, Maryland
Resource Inventory Table**

NR #	Field #	Property Name	Description	C Dist	C Bdg	NC Bdg	C Str	NC Str	C Ob	NC Ob	C Site	NC Site	Notes
		Road	home										
60	180	6624 Mountain Church Road	Brick Ranch-style house	0	0	1	0	0	0	0	0	0	1970s
61	181	6619 Mountain Church Road	rock & vinyl-sided ranch house	0	0	1	0	0	0	0	0	0	1990s
62	182	6621 Mountain Church Road	brick-sided ranch-style house	0	0	1	0	0	0	0	0	0	1970s
63	183	6630 Mountain Church Road	Yellow vinyl-sided house, 1 story with central brick chimney	0	0	1	0	0	0	0	0	0	Early 20 th Century
64	184	6636 Mountain Church Road	brick split-level house	0	0	1	0	0	0	0	0	0	1970s
65	185	6638 Mountain Church Road	White 2 story side-gable house, contributing house with asbestos siding, 4 contributing out-buildings	0	5	4	0	0	0	0	0	0	early 20 th c.
66	186	6718 Mountain Church Road	Brick 2-story house	0	0	1	0	0	0	0	0	0	built in last 30 years; Behind 6638
67	187	6710 Mountain Church Road	2 story log house with vinyl siding, 6/6 windows, small barn with forebay	0	1	0	0	0	0	0	0	0	Late 19 th century house; mid-19 th century barn
68	188	6622 Mountain Church Road	Modern 2 story house; Vinyl & brick-sided	0	0	1	0	0	0	0	0	0	
69	189	6006 Highway 17	stone-sided ranch-style house; Vinyl-sided addition	0	0	1	0	0	0	0	0	0	1950s or 1960s
70	190	1606 Gapland/Huffer Rd; Shafer-Motherway House	Yellow, brick Flemish bond, 2 story house; Fan light over door; 2 story frame summer kitchen, frame bank barn, board and batten outbuilding, stone outbuilding	0	5	0	0	0	0	0	0	0	1830s; Belonged to Martin Shafer in 1862; US Gen. Franklin's Headquarters during Battle
71	191	1519 Gapland Road	2 story, Cross-gable Gothic Revival house, Clapboard siding, molded lintels	0	0	1	0	0	0	0	0	0	Late 19 th c.
72	192	5533 Gapland Road	Not visible from public road	0	0	1	0	0	0	0	0	0	Late 19 th century (Davis)
73	193	5723 Burkittsville	2 story stone house; At least 3 large	0	1	10	0	0	0	0	0	0	Early 19 th century

**Crampton's Gap Historic District (F-4-017-A; WA-III-176), Frederick and Washington Counties, Maryland
Resource Inventory Table**

NR #	Field #	Property Name	Description	C Dist	C Bdg	NC Bdg	C Str	NC Str	C Ob	NC Ob	C Site	NC Site	Notes
		Road	frame barns built later										
74	194	NW corner of Brownsville Pass Rd and Burkittsville Rd	Two story salmon-colored brick modern house on west side of road	0	0	1	0	0	0	0	0	0	20 th c.
75	195	5636 Burkittsville Road	Two story Gothic Revival Farmhouse	0	0	1	0	0	0	0	0	0	Late 19 th c.
76	196	5630 Burkittsville Road	One-story concrete block house; Possible log section	0	0	1	0	0	0	0	0	0	20 th c.
77	197	5614 Burkittsville Road	3-bay cross gable, two-story house; Vert. board barn with forebay	0	0	2	0	0	0	0	0	0	Late 19 th c.
78	198	5605 Burkittsville Road-Distillery Springs Farm	Large farm, 3 bay cross gable house and large 2 story, new house	0	0	8	0	0	0	0	0	0	Late 19 th – 20 th c.; 6+ barns, numerous outbuildings
79	199	5606 Burkittsville Road	Gable front frame 2 story house, 2/2 sash, Yellow vinyl siding	0	0	1	0	0	0	0	0	0	Late 19 th c.
80	200	5542 Burkittsville Road	Two-story stone house; Small bank barn; gable-front stone outbuilding	0	3	0	0	0	0	0	0	0	Early-mid 19 th c.
81	201	5526 Burkittsville Road	Stone 2 story 3 bay house, 6/6 sash, stone and frame bank barn with forebay	0	2	0	0	0	0	0	0	0	Mid 19 th century
82	202	5506A Burkittsville Road	2 story, cross-gable house	0	0	1	0	0	0	0	0	0	Late 19 th c.
83	203	(Address unk.) Burkittsville Road	1 story pre-fabricated, vinyl-sided house	0	0	1	0	0	0	0	0	0	20 th c.
84	204	5506B Burkittsville Road	Not visible from public road	0	0	1	U	U	0	0	0	0	Blue Ridge Grill?-possible post-CW black restaurant
85	205	**** Burkittsville Road	Not visible from public road	0	U	U	U	U	U	U	0	0	
86	206	**** Burkittsville Road	Not visible from public road	0	U	U	U	U	U	U	0	0	
87	207	5426 Burkittsville Road	Stone cross-gable 2-story house, diamond window in 2 nd story gable	0	0	1	0	0	0	0	0	0	Late 19 th c.

Crampton's Gap Historic District (F-4-017-A; WA-III-176), Frederick and Washington Counties, Maryland

Resource Inventory Table

NR #	Field #	Property Name	Description	C Dist	C Bdg	NC Bdg	C Str	NC Str	C Ob	NC Ob	C Site	NC Site	Notes
88	208	5420 Burkittsville Road	Small Mobile home	0	0	1	0	0	0	0	0	0	20 th c.
89	209	5414 Burkittsville Road	Two-story log or frame house, 6/6 sash; Ext. brick end chimney	0	0	1	0	0	0	0	0	0	Late 19 th century
90	210	5406 Burkittsville Road	2 story cross gable house, vinyl and brick siding	0	0	1	0	0	0	0	0	0	Extensively remodeled
91	211	5402 Burkittsville Road	1 story frame house, recent siding, center stove chimney	0	0	1	0	0	0	0	0	0	Early 20 th c.
92	212	5341 Burkittsville Road	2 story exposed log house	0	1	0	0	0	0	0	0	0	Mid 19 th century
93	213	5331 Burkittsville Road	2 story log house, center chimney	0	1	0	0	0	0	0	0	0	Mid 19 th century
94	214	5325 Burkittsville Road	2 story side-gable log house with center chimney	0	0	1	0	0	0	0	0	0	late 19 th century
95	215	5319 Burkittsville Road	1 ½ story log house, center chimney, 2/2 sash	0	0	1	0	0	0	0	0	0	Late 19 th c.
96	216	5309 Burkittsville Road	Altered, gable front, 1 story house, Aluminum siding, Metal roof	0	0	1	0	0	0	0	0	0	Prob. Late 19 th c.
97	—	Stone Walls in Fields and along roads	Stone walls along property lines and fields, many of which probably served as troop defense	0	0	0	1	0	0	0	0	0	Multiple locations throughout district
98	—	Unk. Address Brownsville Pass Rd	1 ½ story stone house with recent frame addition	0	1	0	0	0	0	0	0	0	Mid 19 th century
99	—	Unk. Address Brownsville Pass Rd	Stone one-story house with frame addition	0	1	0	0	0	0	0	0	0	Mid 19 th century
100	—	Unk. Address Brownsville Pass Rd	2 story frame house (gray)	0	0	1	0	0	0	0	0	0	Early 20 th century
101	—	5800B Brownsville Pass Rd	Stone siding over double-wide mobile home	0	0	1	0	0	0	0	0	0	20 th c.

**Crampton's Gap Historic District (F-4-017-A; WA-III-176), Frederick and Washington Counties, Maryland
Resource Inventory Table**

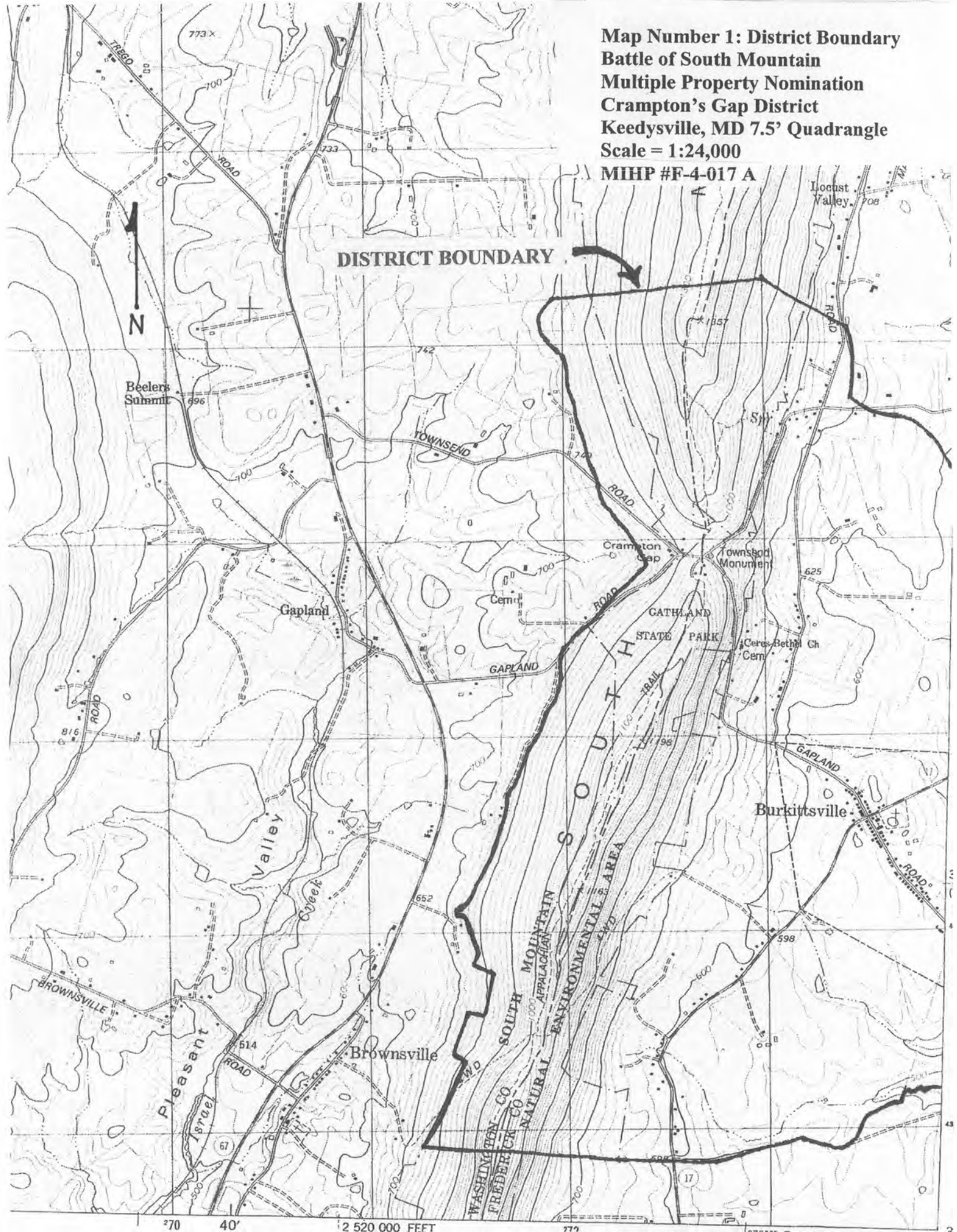
NR #	Field #	Property Name	Description	C Dist	C Bdg	NC Bdg	C Str	NC Str	C Ob	NC Ob	C Site	NC Site	Notes
102	-	Unk. Address Brownsville Pass Rd	One-story modern vinyl-sided ranch style house	0	0	1	0	0	0	0	0	0	20 th c.
103	-	Crampton's Gap battlefield	Mountain pass on Gapland Road and surrounding area	0	0	0	0	0	0	0	1	0	F-4-017-A; location of action during battle of South Mountain
104	-	Gapland Road/Huffer Road	Historic Road; Western portion was route of Confederate retreat	0	0	0	1	0	0	0	0	0	Appears on 1858 Isaac Bond map
105	-	Mountain Church Rd	Historic road from Gapland Road to Mountain Church Road	0	0	0	1	0	0	0	0	0	Appears on 1858 Isaac Bond map
106	-	Arnoldtown Road	Historic Road from Gapland Road to Mountain Church Road	0	0	0	1	0	0	0	0	0	Appears on 1858 Isaac Bond map
107	-	Burkittsville Road	Historic Road from Burkittsville to Petersville Road	0	0	0	1	0	0	0	0	0	Appears on 1858 Isaac Bond map
108	-	Brownsville Pass Rd	Historic Road	0	0	0	1	0	0	0	0	0	Appears on 1858 Isaac Bond map
109	-	Gath Farm Complex	Gapland Road at Crampton's Gap	0	0	4	0	1	0	0	0	1	WA-III-038; ca.1884 house, outbuildings, tomb
110	-	War Correspondent's Memorial Arch	55 foot high brownstone and limestone arch with plaques & stature dedicated to media war correspondents	0	0	0	0	1	0	0	0	0	Built 1896; Listed on NR in 1966 with Antietam Nat'l Battlefield; WA-III-117
111	-	Burkittsville Historic District	Village on Burkittsville Road, east side of South Mountain	1	70	0	0	0	0	0	0	0	Listed on NR 1975; F-2-10
112	138	NE Corner Gapland Rd & Townsend Rd	2-Story Stone house with board & batten addition; central brick chimney; 2 dormer windows on 2 nd floor	0	0	1	0	0	0	0	0	0	Late 19 th c.
113	139	Gapland Turnpike Toll House/Van Gilder Pottery	2 story, 3 bay stone house Board and batten barn	0	0	2	0	0	0	0	0	0	Turnpike established 1896; WA-111-123
114	239	Unk. Address on Townsend Rd	2 story frame house	0	0	1	0	0	0	0	0	0	Late 19 th c.; "Camp In a Tree" campground

**Crampton's Gap Historic District (F-4-017-A; WA-III-176), Frederick and Washington Counties, Maryland
Resource Inventory Table**

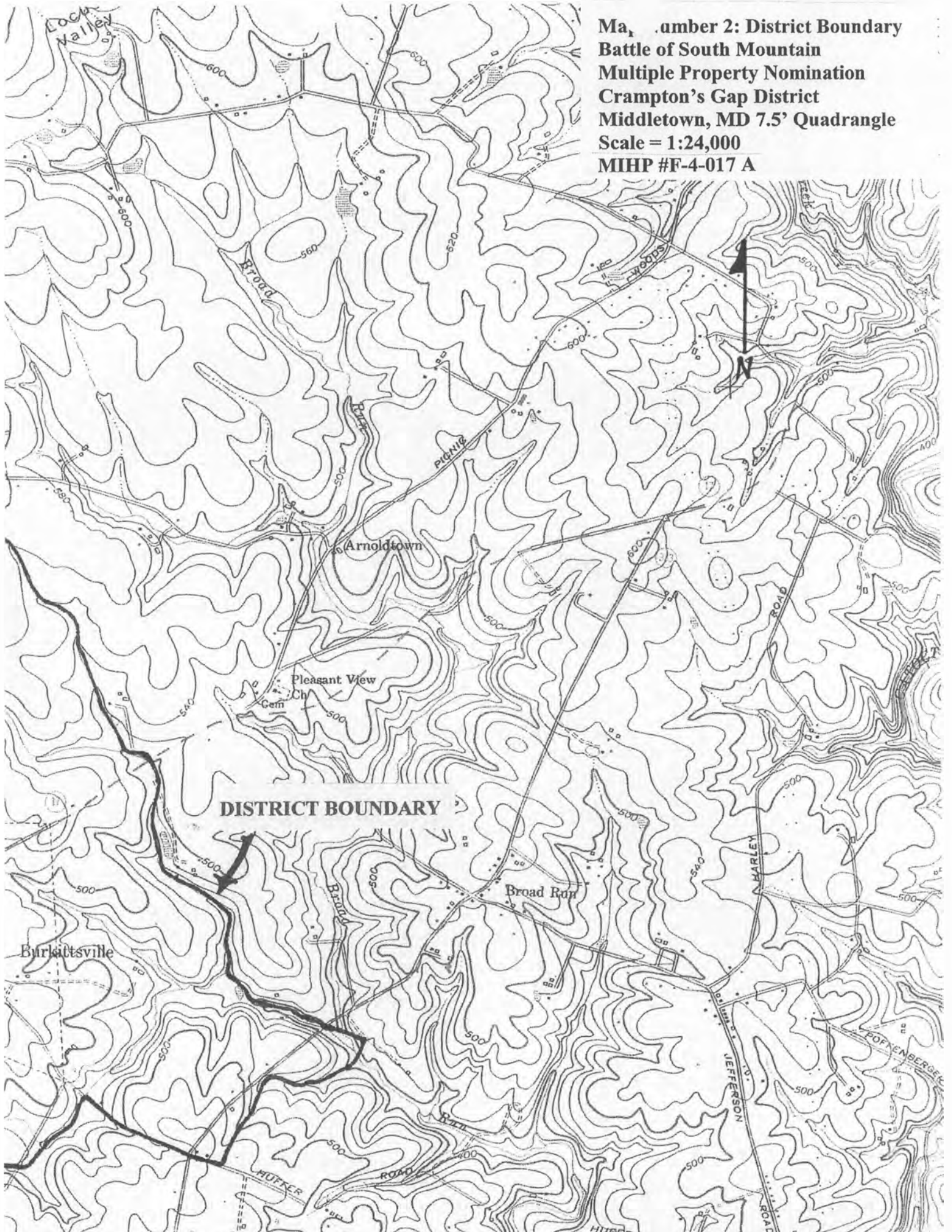
NR #	Field #	Property Name	Description	C Dist	C Bdg	NC Bdg	C Str	NC Str	C Ob	NC Ob	C Site	NC Site	Notes
115	240	Unk. Address on Townsend Rd	Modern 1 story frame house , vertical siding	0	0	1	0	0	0	0	0	0	20 th c.
116	241	20719 Townsend Road	Modern 1 story wood frame house	0	0	1	0	0	0	0	0	0	20 th c.
117	242	20735 Townsend Road	Modern 1 story wood frame house	0	0	1	0	0	0	0	0	0	20 th c.
118	243	20716(?) Townsend Road	1 room frame cabin on stilts	0	0	1	0	0	0	0	0	0	Built in last 30 years
119	244	20809(?) Townsend Road	2 story modern frame house	0	0	1	0	0	0	0	0	0	20 th c.
120	245	20807 Townsend Road	1 story modern frame house	0	0	1	0	0	0	0	0	0	20 th c.
121	246	Unk. address Townsend Road	1 ½ or 2 story log house	0	0	1	0	0	0	0	0	0	Prob. Late 19 th c.; Property not clearly visible from road.
122	247	20819 Townsend Road	2 story frame house with brick and vinyl siding	0	0	1	0	0	0	0	0	0	20 th c.

**Map Number 1: District Boundary
Battle of South Mountain
Multiple Property Nomination
Crampton's Gap District
Keedysville, MD 7.5' Quadrangle
Scale = 1:24,000**

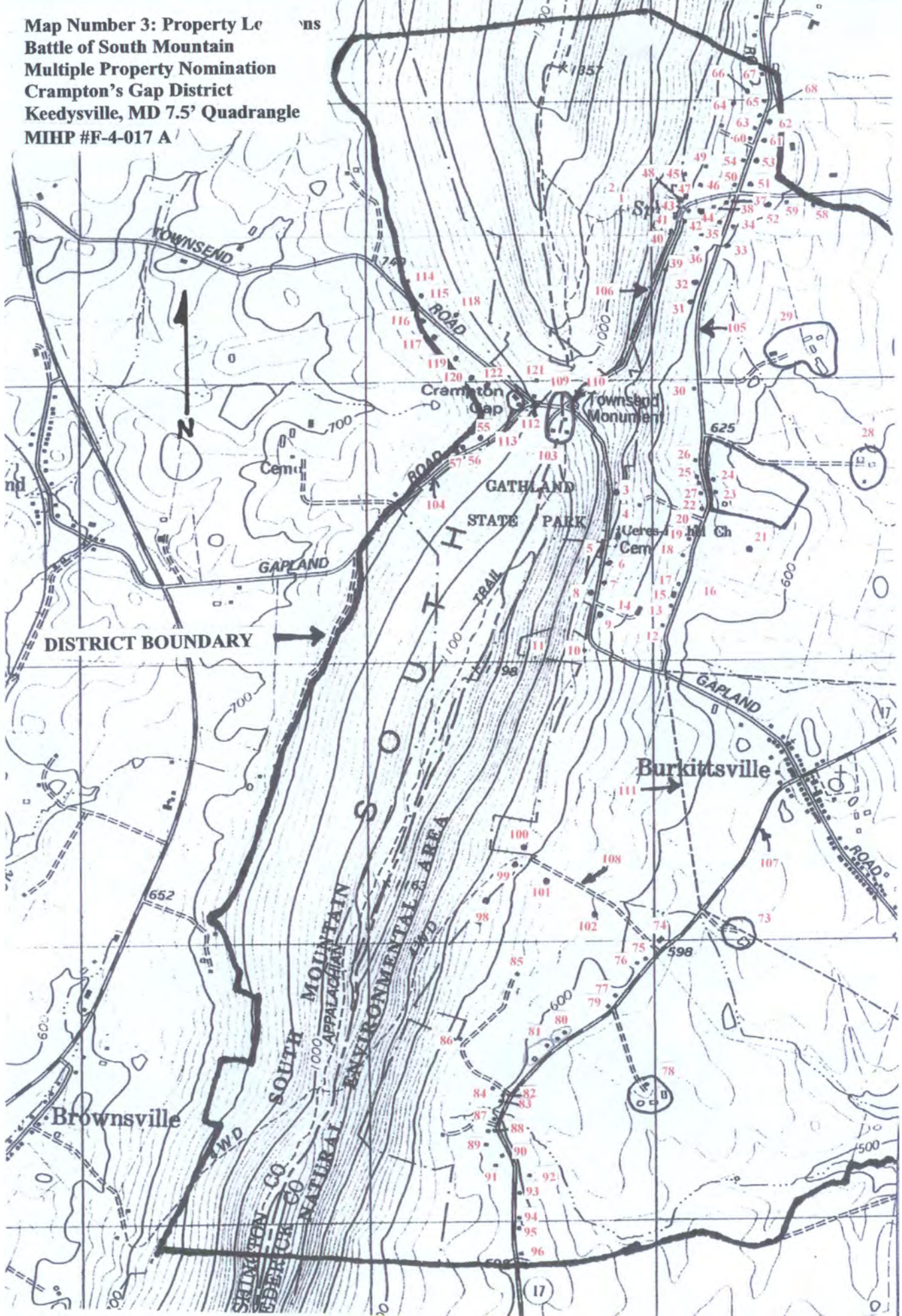
MIHP #F-4-017 A



Map Number 2: District Boundary
Battle of South Mountain
Multiple Property Nomination
Crampton's Gap District
Middletown, MD 7.5' Quadrangle
Scale = 1:24,000
MIHP #F-4-017 A



Map Number 3: Property Lots
Battle of South Mountain
Multiple Property Nomination
Crampton's Gap District
Keedysville, MD 7.5' Quadrangle
MIHP #F-4-017 A



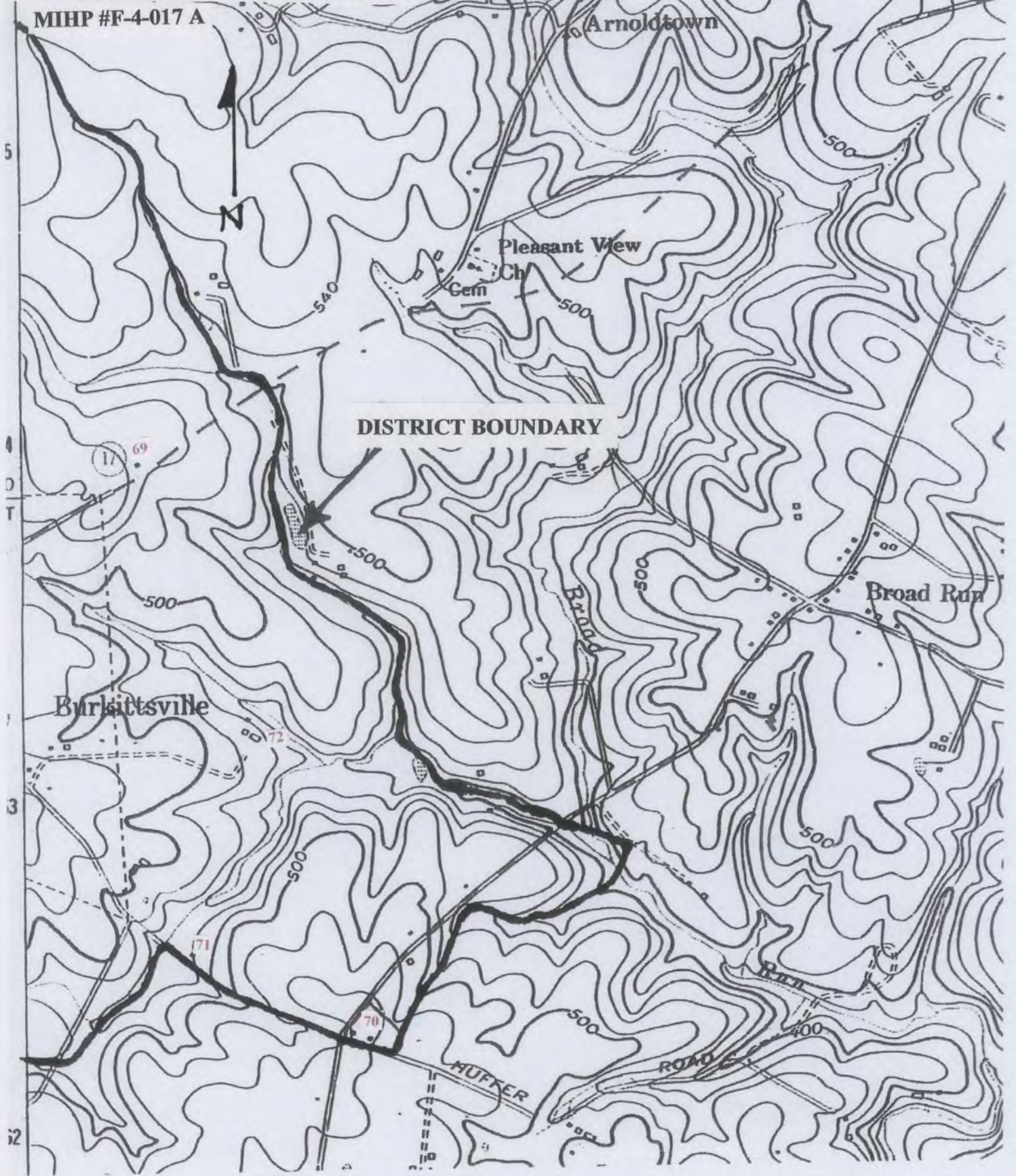
DISTRICT BOUNDARY

SOUTH MOUNTAIN ENVIRONMENTAL AREA

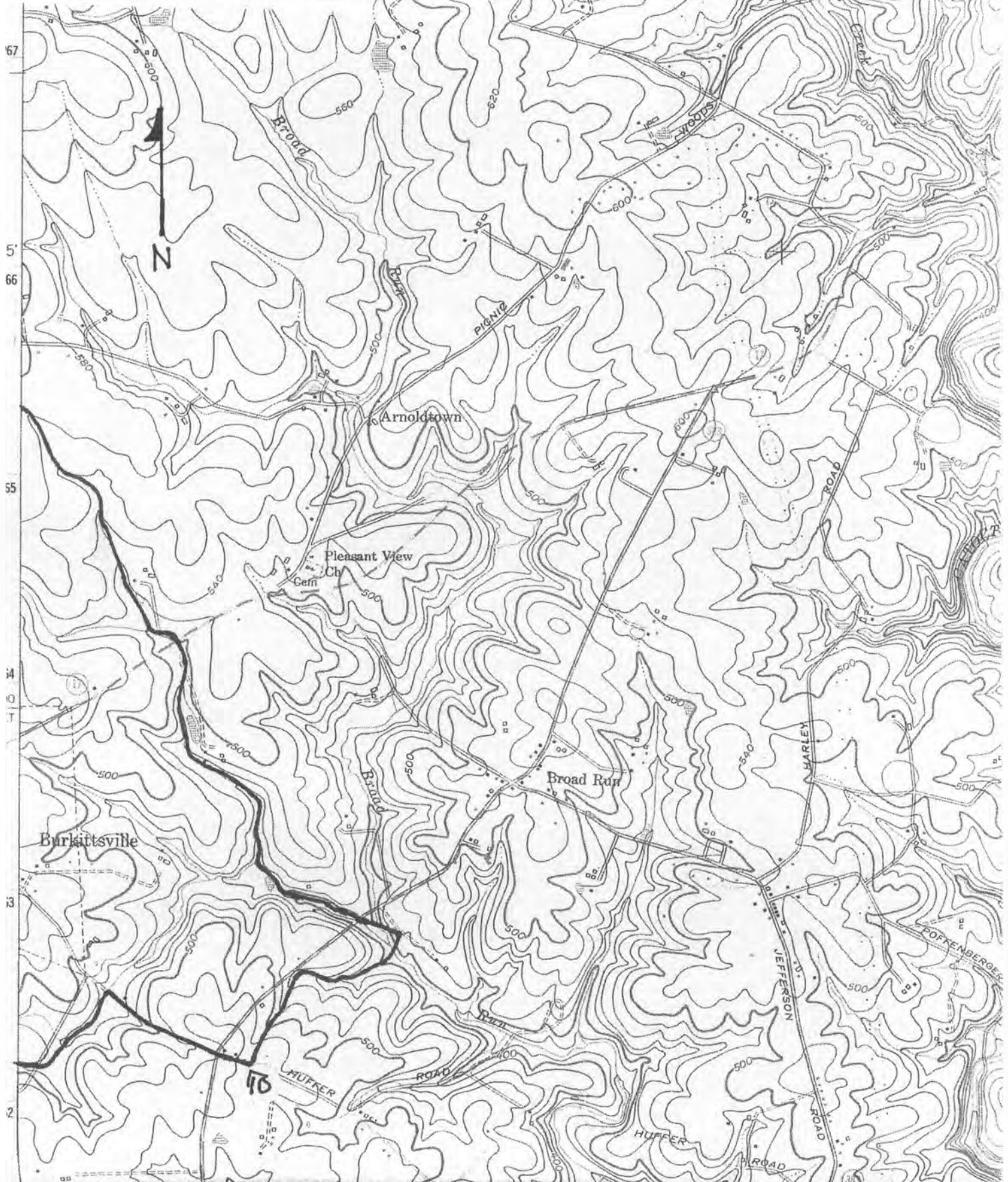
Brownsville

Burkittsville

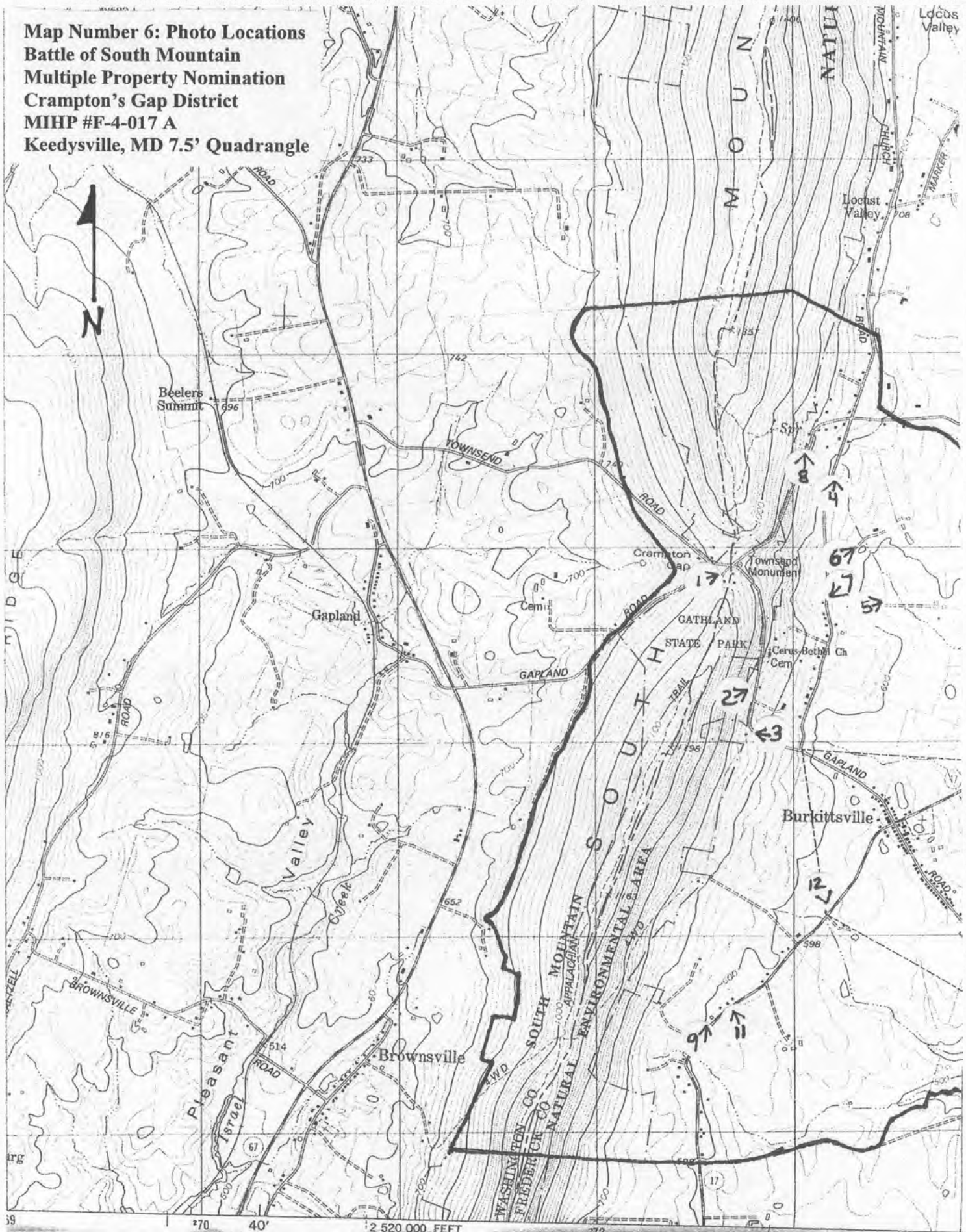
Map Number 4: Property Locations
Battle of South Mountain
Multiple Property Nomination
Crampton's Gap District
Middletown, MD 7.5' Quadrangle
MIHP #F-4-017 A



168 **Map Number 5: Photo Location.**
Battle of South Mountain
Multiple Property Nomination
Crampton's Gap District
MIHP #F-4-017 A
Middletown, MD 7.5' Quadrangle



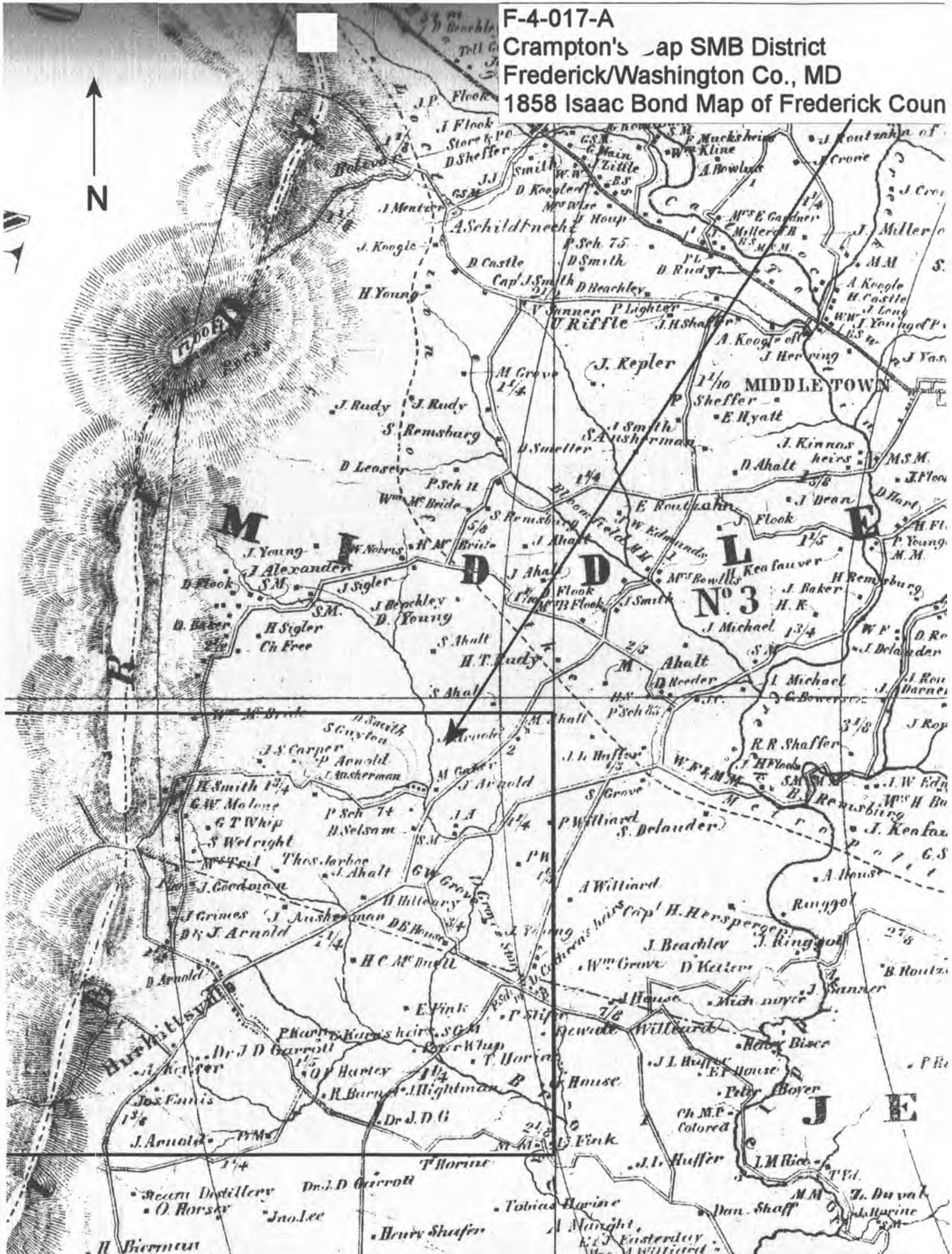
Map Number 6: Photo Locations
Battle of South Mountain
Multiple Property Nomination
Crampton's Gap District
MIHP #F-4-017 A
Keedysville, MD 7.5' Quadrangle



F-4-017-A

Crampton's Map SMB District
Frederick/Washington Co., MD

1858 Isaac Bond Map of Frederick Coun



TIDE

M

I

D

D

N° 3

L

E

J

E

H Bierbaum

Secum Distillery
O. Horsey

Dr. J. D. Carroll
Jno. Lee

Benny Shaffer

Tobias Harine

A. Mairght
E. J. Easterday
Mrs. A. Williard

Dan Shaff

J. Duval
J. Harine

Ch. M.P. Colored

House

Williard

House

Williard

House

Williard

House

Williard

House

Williard

House

Williard

House

Williard

House

Williard

House

Williard

House

Williard

House

Williard

House

Williard

House

Williard

House

Williard

House

Williard

House

Williard

House

Williard

House

Williard

House

Williard

House

Williard

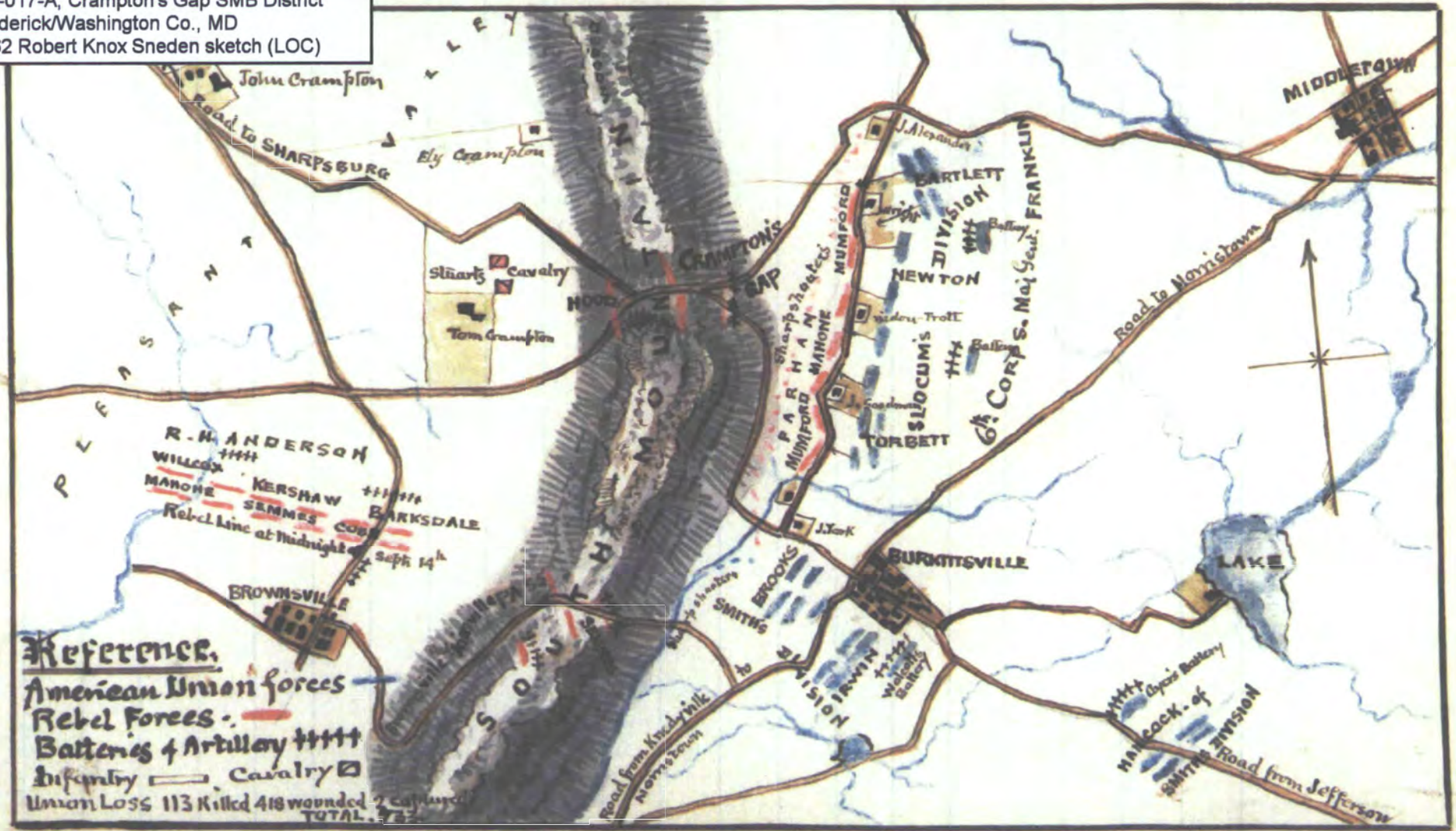
House

Williard

House

Williard

F-4-017-A, Crampton's Gap SMB District
 Frederick/Washington Co., MD
 1862 Robert Knox Sneden sketch (LOC)



Reference.
 American Union forces —
 Rebel Forces —
 Batteries & Artillery +++++
 Infantry — Cavalry □
 Union Loss 113 Killed 418 wounded 2 captured
 TOTAL 533

**THE BATTLE OF CRAMPTON'S GAP, 5 miles South of TURNER'S GAP, SOUTH MOUNTAIN Md.
 SEPTEMBER 14th 1862.**

UNITED STATES DEPARTMENT OF THE INTERIOR
NATIONAL PARK SERVICE

NATIONAL REGISTER OF HISTORIC PLACES
EVALUATION/RETURN SHEET

REQUESTED ACTION: NOMINATION

PROPERTY Crampton's Gap Historic District
NAME:

MULTIPLE South Mountain Battlefields -- September 14, 1862, MPS
NAME:

STATE & COUNTY: MARYLAND, Frederick

DATE RECEIVED: 7/12/10 DATE OF PENDING LIST: 8/18/10
DATE OF 16TH DAY: 9/02/10 DATE OF 45TH DAY: 8/26/10
DATE OF WEEKLY LIST:

REFERENCE NUMBER: 10000576

REASONS FOR REVIEW:

APPEAL: N DATA PROBLEM: N LANDSCAPE: N LESS THAN 50 YEARS: N
OTHER: N PDIL: N PERIOD: N PROGRAM UNAPPROVED: N
REQUEST: Y SAMPLE: N SLR DRAFT: N NATIONAL: Y

COMMENT WAIVER: N

ACCEPT RETURN REJECT 8/26/2010 DATE

ABSTRACT/SUMMARY COMMENTS:

See attached Return Sheet for detailed comment.

RECOM./CRITERIA Return

REVIEWER Patricia Andrus DISCIPLINE Historian

TELEPHONE _____ DATE 8/26/2010

DOCUMENTATION see attached comments Y/N see attached SLR Y/N

If a nomination is returned to the nominating authority, the nomination is no longer under consideration by the NPS.



United States Department of the Interior

NATIONAL PARK SERVICE
1849 C Street, N.W.
Washington, D.C. 20240

IN REPLY REFER TO:

United States Department of the Interior National Park Service

National Register of Historic Places Evaluation/Return Sheet

Property Name: Crampton's Gap Historic District (Frederick County, MARYLAND)
Reference Number: 10000576
Multiple Name: South Mountain Battlefields – September 14, 1862, MPS

Reason for Return: The nomination is being returned for a technical problem with the boundary description and questions about ownership and the resource count.

Verbal Boundary Description: The Verbal Boundary Description does not meet National Register documentation standards. The boundary description for this 3,494 acre district (Section 10, Page 1 of the registration form) is defined as a line drawn on the USGS maps. The National Register Bulletin, *How to Complete the National Register Registration Form*, stipulates (on page 58) that lines drawn on USGS maps can may be used in place of a verbal boundary description only if the boundaries correspond to a ploygon, section lines, or contour lines on the USGS map. The boundary as drawn on the USGS maps for the Crampton's Gap Historic District, are not a polygon, do not follow section lines, and do not follow contour lines.

Please provide either a narrative verbal boundary description defining the historic district boundary, or, in lieu of a narrative verbal boundary description, a map drawn to a scale of at least 1" = 200 feet can be used to define the boundary.

Ownership: In Section 10, p.1 of the registration form it is stated that "the boundary includes lands belonging to South Mountain State Park, the National Park Service, and numerous private property owners," but in Section 5 of the form (Ownership of Property) only private and public-State ownership are checked. Does the boundary encompass Federally-owned land and if so, was the Federal Preservation Officer for the National Park Service notified of the State's intent to nominate federally-owned land and given the opportunity to review and comment on the nomination prior to submitting it to the National Register as required by National Register regulations 36 CFR Part 60? If there are no federally-owned lands included within the boundary, please correct the wording found in Section 10 of the form.

United States Department of the Interior
National Park Service

National Register of Historic Places
Evaluation/Return Sheet

Property Name: Crampton's Gap Historic District (Frederick County, MARYLAND)

Reference Number: 10000576

Multiple Name: South Mountain Battlefields – September 14, 1862, MPS

p. 2

Resource Count: According to section 10 of the form, the nominated area includes the previously listed Burkittsville historic district, but it is not clear why the 70 contributing buildings in Burkittsville are not listed in Section 5 of the form under "Number of contributing resources previously listed in the National Register." Please amend section 5 of the form to show that the boundary includes these previously listed properties.

Please feel free to contact me with any questions concerning this return.



Patrick Andrus, Historian
National Register of Historic Places
202-354-2218
patrick_andrus@nps.gov
8/26/2010

UNITED STATES DEPARTMENT OF THE INTERIOR
NATIONAL PARK SERVICE

NATIONAL REGISTER OF HISTORIC PLACES
EVALUATION/RETURN SHEET

REQUESTED ACTION: RESUBMISSION

PROPERTY Crampton's Gap Historic District
NAME:

MULTIPLE South Mountain Battlefields -- September 14, 1862, MPS
NAME:

STATE & COUNTY: MARYLAND, Frederick

DATE RECEIVED: 12/10/10 DATE OF PENDING LIST:
DATE OF 16TH DAY: DATE OF 45TH DAY: 1/25/11
DATE OF WEEKLY LIST:

REFERENCE NUMBER: 10000576

DETAILED EVALUATION:

ACCEPT RETURN REJECT 1/12/2011 DATE

ABSTRACT/SUMMARY COMMENTS:

On resubmission the state notified the National Park Service Federal Preservation Officer (who commented in support of the nomination in a memorandum dated 10/8/2010), has provided a Verbal Boundary Description to replace the inadequate boundary provided with the original nomination, and has adjusted the resource count (Sec.5) to reflect the number of properties previously listed in the National Register.

RECOM./CRITERIA Accept/ Criterion A
REVIEWER Patricia Andum DISCIPLINE Historian
TELEPHONE _____ DATE 1/12/2011

DOCUMENTATION see attached comments Y/N see attached SLR Y/N



MIHP # F-4-017A, WA-III-176

Cramptons Gap South Mountain Battlefield District

Photo #1

Cramptons Gap at War Correspondents Memorial Arch
WA-III-117

View to East

Nov, 2007

Bigie Phifer, P.R.A. Inc.

MD SHPO



MIHP # F-4-017A, WA-111-176
Cramptons Gap South Mountain Battlefield District
Photo # 2

6019 Gaptand Rd

View to NE

Nov. 2007

Paige Phifer, PRA Inc.

MD SHPO



MIHP # F-4-017A, WA-111-176
Cramptons Gap South Mountain Battlefield District

Photo #3

6000B Gapland Rd

View to West

Nov, 2007

Paige Phifer, P.R.A., Inc

MD SH PO



MIHP # F-4-017A, WA-111-176

Cramptons Gap South Mountain Battlefield District

Photo # 4

Mountain Church Rd Landscape

View to North

Nov 2007

Paige Phifer, PRA, Inc.

MD SHPO



MIHP # F-4-017A, WA-111-176

Cramptons Gap South Mountain Battlefield District

Photo #5

6229 A+B Mountain Church Rd - Forest/Miller Farmstead

F-2-088

View to East

Nov, 2007

Paige Phifer, PRA, Inc.

MD SHPO

s/u



MIHP # F-4-017A, WA-111-176

Crampton's Gap South Mountain Battlefield District

Photo # 6

Wipp Farm - Char Mar Dairy - 6319 Mountain Church Rd

View to NE

F-2097

Nov, 2007

Paige Phifer, PRA, Inc.

MO SHPO



MIHP #F-4-017A, WA-111-176

Cramptons Gap South Mountain Battlefield District

Photo # 7

Widow Tritt House, F-2-098

View to SW

Nov, 2007

Paige Phifer, PIRA, Inc

MO SHPS



MEHP #F-4-017A, WA-111-176
Cramptons Gap South Mountain Battlefield District

Photo #8

1038 Arnoldtown Rd

View to North

Dec. 2007

Paige Phifer, P.R.A., Inc.

MD SHPO



MIHP # F-4-017A, WA-111-176

Crampton's Gap South Mountain Battlefield District

Photo #9

5526 Burkuttsville Rd

View to North

January 2008

Paige Phifer, P.R.A., Inc.

MD SHPO

9/11



MIHP # F-4-017A, WA-111-176

Crampton's Gap South Mountain Battlefield District

Photo # 10

Burkittsville Rd Landscape

View to NE

January 2008

Paige Phifer, P.R.A., Inc

MD SHPO

10/11



MIHP # F-4-017A, WA-111-176
Cramptons Gap South Mountain Battlefield District

Photo # 11

5723 Burkitsville Rd

View to Southeast

Jan 2008

Paige Phifer, P.R.A., Inc.

MD SHPO

11/11



F-4-017-A
WA-III-176

CRAMPTON'S
GAP W.D.
FREDERICK &
WASHINGTON
COUNTIES,
MD

- UTMs
- 1. N 4366220
E 271860
 - 2. N 4366370
E 273155
 - 3. N 4366520
E 273445
 - 4. N 4366670
E 273720
 - 5. N 4366820
E 275000
 - 6. N 4366970
E 273370
 - 7. N 4367120
E 272690
 - 8. N 4367270
E 271260

Mapped by the Corps of Engineers, U. S. Army
Edited and published by the Geological Survey

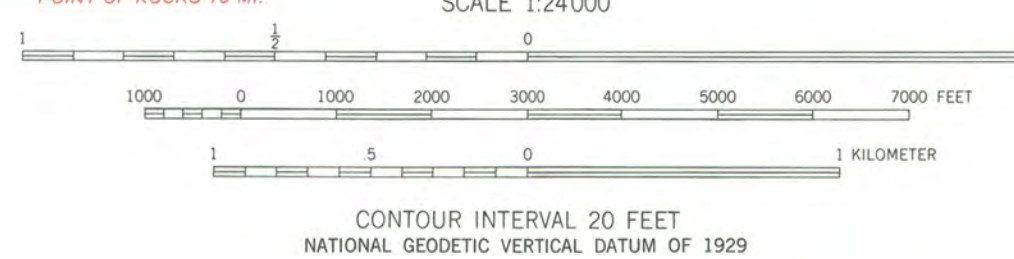
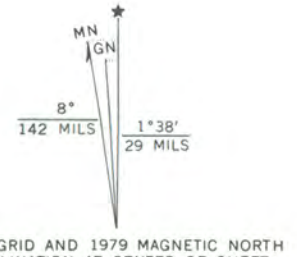
Control by USC&GS and USSCS

Topography from aerial photographs by stereophotogrammetric
methods. Aerial photographs taken 1943
Culture revised by the Geological Survey 1953

Polyconic projection. 1927 North American datum
10,000-foot grid based on Maryland coordinate system
1000-meter Universal Transverse Mercator grid ticks,
zone 18, shown in blue

To place on the predicted North American Datum 1983
move the projection lines 7 meters south and
25 meters west as shown by dashed corner ticks

There may be private inholdings within the boundaries of
the National or State reservations shown on this map



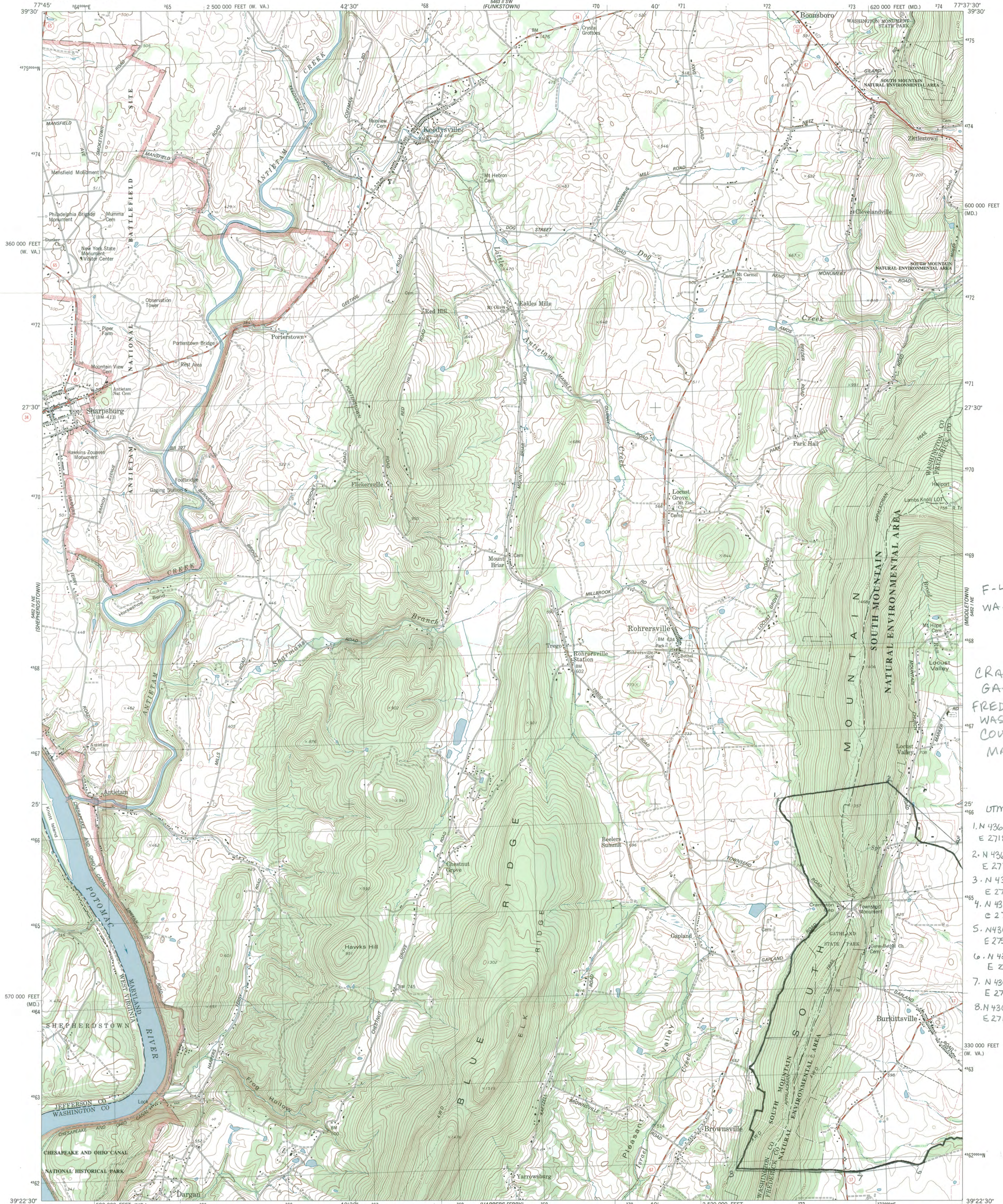
ROAD CLASSIFICATION

Heavy-duty	Light-duty
Medium-duty	Unimproved dirt
U.S. Route	State Route
	Interstate Route

THIS MAP COMPLIES WITH NATIONAL MAP ACCURACY STANDARDS
FOR SALE BY U. S. GEOLOGICAL SURVEY
DENVER, COLORADO 80225, OR RESTON, VIRGINIA 22092
A FOLDER DESCRIBING TOPOGRAPHIC MAPS AND SYMBOLS IS AVAILABLE ON REQUEST

Revisions shown in purple compiled by the Geological Survey from aerial
photographs taken 1977 and other source data. This information
not field checked. Map edited 1979
Boundary lines shown in purple compiled from latest
information available from the controlling authority

N3922.5-W7730/7.5
1953
PHOTOREVISED 1979
AMS 5462 1 NE-SERIES V833

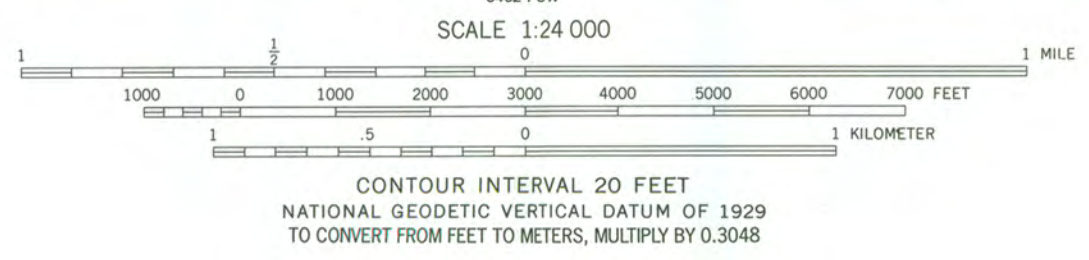
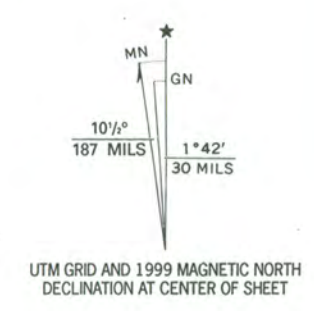


F-4-017-A
WA-111-176

Crampton's
GAP H.D.
FREDERICK &
WASHINGTON
COUNTIES,
MARYLAND

- UTMs
- 1. N 4366220
E 271860
 - 2. N 4366370
E 273155
 - 3. N 4366520
E 273945
 - 4. N 4366670
E 275240
 - 5. N 4366820
E 276030
 - 6. N 4366970
E 276820
 - 7. N 4367120
E 277610
 - 8. N 4367270
E 278400

Produced by the United States Geological Survey
Derived from imagery taken 1974 and other sources. Photospliced using imagery taken 1994; no major culture or drainage changes observed. Survey control current as of 1974
Boundaries, other than corporate, revised 1999
North American Datum of 1927 (NAD 27)
Projection: Maryland coordinate system (Lambert conformal conic)
10 000-foot ticks: Maryland coordinate system and West Virginia coordinate system, north zone
1000-meter Universal Transverse Mercator grid, zone 18
North American Datum of 1983 (NAD 83) is shown by dashed corner ticks. The values of the shift between NAD 27 and NAD 83 for 7.5-minute intersections are obtainable from National Geodetic Survey NADCON software
There may be private inholdings within the boundaries of the National or State reservations shown on this map



ROAD CLASSIFICATION

Primary highway, hard surface	Light-duty road, hard or improved surface
Secondary highway, hard surface	Unimproved road
Interstate Route	U. S. Route
	State Route

KEEDYSVILLE, MD.—W. VA.

1994

NIMA 5462 1 NW—SERIES V835

THIS MAP COMPLIES WITH NATIONAL MAP ACCURACY STANDARDS
FOR SALE BY U.S. GEOLOGICAL SURVEY, P.O. BOX 25286, DENVER, COLORADO 80225
A FOLDER DESCRIBING TOPOGRAPHIC MAPS AND SYMBOLS IS AVAILABLE ON REQUEST





United States Department of the Interior

NATIONAL PARK SERVICE

1849 C Street, N.W.
Washington, D.C. 20240

Memorandum

To: Chief, National Register of Historic Places and National Historic Landmarks

From: Chief Historian, National Park Service *Rebecca L. Muth 10/8/2010*

Subject: Turner's and Fox's Gap Historic District and Crampton's Gap Historic District National Register Nominations

Enclosed, please find the National Register of Historic Places (National Register) nominations for two districts related to the Civil War Battle of South Mountain. I have signed both nominations as eligible for the National Register. Both nominations are being nominated under Applicable Criterion A and with military as the area of significance.

I am a commenting authority on these nominations and have signed the appropriate box in Section 3 of the National Register form. The Appalachian Trail runs through the battlefield. The nominations are being nominated by the Maryland State Historic Preservation office (MDSHPO).

The MDSHPO did an excellent job documenting this important battle site. MDSHPO worked well with the Appalachian Natural Scenic Trail Environmental Protection Specialist Sarah Bransom. Ms. Bransom supports the nominations. Tanya Gossett of the American Battlefield Protection Program is also supportive of the nomination.



Maryland Department of Planning
Maryland Historical Trust

Martin O'Malley
Governor

Anthony G. Brown
Lt. Governor

Richard Eberhart Hall
Secretary

Matthew J. Power
Deputy Secretary

Mr. Robert Sutton
Chief Historian/Federal Preservation Officer
National Park Service
1201 I (eye) St., NW
Mail Stop 2280
Washington, DC 20005

RE: Turner's and Fox's Gaps Historic District
Crampton's Gap Historic District
Frederick and Washington counties, Maryland

Dear Mr. Sutton:

Enclosed is documentation for nominating the above-referenced properties to the National Register of Historic Places. Because the districts include Federally-owned property - namely the Reno Monument, and sections of the Appalachian Trail - I am forwarding the nominations for your review and concurrence.

Please don't hesitate to contact me with any questions or comments, by phone at (410) 514-7649 or email pkurtze@mdp.state.md.us. Thank you for your assistance.

Very truly yours,

Peter E. Kurtze
Administrator, Evaluation and Registration
Maryland Historical Trust