

United States Department of the Interior
National Park Service

National Register of Historic Places
Registration Form

This form is for use in nominating or requesting determinations for individual properties and districts. See instructions in *How to Complete the National Register of Historic Places Registration Form* (National Register Bulletin 16A). Complete each item by marking "x" in the appropriate box or by entering the information requested. If any item does not apply to the property being documented, enter "N/A" for "not applicable". For functions, architectural classification, materials, and areas of significance, enter only categories and subcategories from the instructions. Place additional entries and narrative items on continuation sheets (NPS Form 10-900a). Use a typewriter, word processor, or computer to complete all items.

1277

1. Name of Property

Historic name Columbus Izaak Walton League Lodge

Other names/site number NeHBS #PT00-262

2. Location

Street & number P.O. Box 394

Not for publication [n/a]

City or town Columbus

Vicinity [n/a]

State Nebraska Code NE County Platte Code 141 Zip code 68601

3. State/Federal Agency Certification

As the designated authority under the National Historic Preservation Act of 1986, as amended, I hereby certify that this nomination request for determination of eligibility meets the documentation standards for registering properties in the National Register of Historic Places and meets the procedural and professional requirements set forth in 36 CFR Part 60. In my opinion, the property meets does not meet the National Register Criteria. I recommend that this property be considered significant nationally statewide locally. (See continuation sheet for additional comments.)

Signature of certifying official

Date

Wendell Summer
Director, Nebraska State Historical Society
State or Federal agency and bureau

10/12/01

In my opinion, the property meets does not meet the National Register criteria. (See continuation sheet for additional comments.)

Signature of certifying official/Title

Date

State or Federal agency and bureau

4. National Park Service Certification

I, hereby, certify that this property is:

entered in the National Register.

see continuation sheet.

determined eligible for the National Register.

see continuation sheet.

determined not eligible for the National Register.

removed from the National Register.

other, (explain):

Edson H. Beall 11-29-01

Signature of Keeper

Date of Action

Beall

Columbus Izaak Walton League Lodge

Name of Property

Platte County, Nebraska

County and State

5. Classification

Ownership (Check as many boxes as apply)

Category of Property (Check only one box)

- Private
- Public-local
- Public-state
- Public-federal

- Building(s)
- District
- Site
- Structure
- Object

Number of Resources within Property

(Do not include previously listed resources in the count.)

Contributing	Noncontributing	
2		Buildings
		Sites
5		Structures
	4	Objects
7	4	Total

Name of related multiple property listing

(Enter "N/A" if property is not part of a multiple property listing.)

N/A

Number of contributing resources previously listed in the National Register

N/A

6. Function or Use

Historic Functions

(Enter categories from instructions.)

SOCIAL: meeting hall

RECREATION and CULTURE: outdoor recreation

Current Functions

(Enter categories from instructions.)

SOCIAL: meeting hall

RECREATION and CULTURE: outdoor recreation

7. Description

Architectural Classification

(Enter categories from instructions.)

OTHER

Materials

(Enter categories from instructions.)

Foundation CONCRETE

Walls WOOD: log, STONE

Roof ASPHALT

Other

Narrative Description

(Describe the historic and current condition of the property on one or more continuation sheets.)

8. Statement of Significance

Applicable National Register Criteria

(Mark "X" in one or more boxes for the criteria qualifying the property for National Register listing.)

- X A Property is associated with events that have made a significant contribution to the broad patterns of our history.
B Property is associated with the lives of persons significant in our past.
X C Property embodies the distinctive characteristics of a type, period, or method of construction or represents the work of a master, or possesses high artistic values, or represents a significant and distinguishable entity whose components lack individual distinction.
D Property has yielded, or is likely to yield information important in prehistory or history.

Areas of Significance

(Enter categories from instructions.)

CONSERVATION

ENTERTAINMENT/RECREATION

Period of Significance

1938-1951

Significant Dates

1938

Significant Person

(Complete if Criterion B is marked above.)

Cultural Affiliation

N/A

Architect/Builder

Emiel Christensen

Criteria Considerations

(Mark "X" in all the boxes that apply.)

Property is:

- A Owned by a religious institution or used for religious purposes.
B Removed from its original location.
C A birthplace or a grave.
D A cemetery.
E A reconstructed building, object, or structure.
F A commemorative property.
G Less than 50 years of age or achieved significance within the past 50 years.

Narrative Statement of Significance

(Explain the significance of the property on one or more continuation sheets.)

9. Major Bibliographical References

Bibliography

(Cite the books, articles, and other sources used in preparing this form on one or more continuation sheets.)

Previous documentation on file (NPS):

- Preliminary determination of individual listing (36 CFR 67) has been requested
Previously listed in the National Register
Previously determined eligible by the National Register
Designated a National Historic Landmark
Recorded by Historic American Buildings Survey #
Recorded by Historic American Engineering Record #

Primary location for additional data:

- X State Historic Preservation Office
Other State agency
Federal agency
Local Government
University
Other
Name of repository:

10. Geographical DataAcreage of property Approximately nine acres.

UTM References (place additional UTM references on a continuation sheet).

	Zone	Easting	Northing		Zone	Easting	Northing
1.	14	6336320	4585070	3.			
2.				4.			

[] See continuation sheet

Verbal Boundary Description

(Describe the boundaries of the property on a continuation sheet.)

Boundary Justification

(Explain why the boundaries were selected on a continuation sheet.)

11. Form Prepared By

name/title	<u>Greg Miller, Preservation Historian</u>	date	<u>August 2001</u>
organization	<u>Nebraska State Historical Society</u>	telephone	<u>(402) 471-4775</u>
street & number	<u>1500 R Street</u>	state	<u>NE</u> zip code <u>68501</u>
city or town	<u>Lincoln</u>		

Additional Documentation

Submit the following items with the completed form:

Continuation Sheets**Maps**A **USGS map** (7.5 or 15 minute series) indicating the property's location.A **Sketch map** for historic districts and properties having large acreage or numerous resources.**Photographs**Representative **black and white photographs** of the property.**Additional items**

(Check with the SHPO or FPO for any additional items.)

Property Owner

(Complete this item at the request of the SHPO or FPO.)

name/title	<u>Ikes Corporation</u>	telephone	<u>(402) 564-4218</u>
street & number	<u>P.O. Box 394</u>	state	<u>NE</u> zip code <u>68601</u>
city or town	<u>Columbus</u>		

Paperwork Reduction Act Statement: This information is being collected for applications to the National Register of Historic Places to nominate properties for listing or determined eligibility for listing, to list properties, and to amend existing listings. Response to this request is required to obtain a benefit in accordance with the National Historic Preservation Act, as amended, (15 USC 470 et seq.).

Estimated Burden Statement: Public reporting burden for this form is estimated to average 18.1 hours per response including the time for reviewing instructions, gathering and maintaining data, and completing and reviewing the form. Direct comments regarding this burden estimate or any aspect of this form to the chief, Administrative Services Division, National Park Service, P.O. Box 37127, Washington, DC 20013-7127; and the Office of Management and Budget, Paperwork Reductions Project (1024-0018), Washington, DC 20503.

**United States Department of the Interior
National Park Service**

**National Register of Historic Places
Continuation Sheet**

Columbus Izaak Walton League Lodge

Name of Property

Platte County, Nebraska

County and State

Section 7 Page 1

The Columbus Izaak Walton League Lodge and surrounding grounds are located in Columbus, the county seat of Platte County in eastern Nebraska. Although located on the southern edge of town along Highway 81, the lodge and its associated acreage maintain a rural setting. A tree lined drive leads up to the lodge that sits on the bank of Barnam Creek. Isolating the lodge and compound from the city is agricultural land that contributes to its rural setting. Originally chartered in 1925, the development of the nine acres that comprise the lodge and its surrounding environs did not begin until 1938. Within its boundaries are a number of architectural features.

Located approximately in the middle of the grounds is the lodge. Between the lodge and the highway is a green space with deciduous trees. The hall itself was constructed in 1938 in the rustic style with Arts and Crafts features. The one-story building, designed by noted local architect Emiel Christensen, is constructed of cottonwood logs with cement chinking. Because the logs were not allowed to cure properly they had a high moisture content. To ensure that this would not endanger the longevity of the lodge Mr. Christensen suggested a rock veneer be added to the exterior. The majority of rock used to complete this project came from the bluffs south of the Platte River.

The main façade, where the cottonwood logs are still visible, faces east and has a single entrance with two stone piers supporting an overhanging roof. The two piers at the entrance are decorated with commemorative native stones donated by Izaak Walton League chapters from every state in the union, each bearing the name of the state or region from which it came. Another feature of the entryway is a marble slab, embedded in the concrete floor, depicting the state of Nebraska and its major rivers. Overhanging eaves, along with the two piers, add to the Arts and Crafts detailing. The roof, now asphalt shingle, originally had wood shingles. The original "T"-shaped building also had a small screened in storage area in the southwest corner. An historic addition designed for use as a kitchen space occupies the northwest corner. Both the storage area and kitchen also have stone veneer on the exterior leaving the exterior with a high degree of integrity.

The main entrance leads to a small interior vestibule that subsequently opens to a large-open "T"-shaped room. The exposed interior walls show the cottonwood logs and chinking covered by the stone veneer on the exterior. The entire interior retains an extremely high degree of integrity. The supporting trusses, posts and decorative trim are of native oak. Additionally, the oak furniture, wall mounted light fixtures, and the hanging wagon wheel light are all original to the building. On the north side of the room is a stone fireplace. Inset in the stone are two facial images of Native Americans and a plaque with the inscription, "COLUMBUS CHAPTER, IZAAK WALTON LEAGUE OF AMERICA, ORGANIZED FEB. 4, 1925-INCORPORATED MAY 1, 1938." The celotex ceiling is original. Because of water damage from a flood in 1993 the original maple floor was replaced with a cement floor. Despite this one change the interior conveys the original atmosphere as when the lodge opened in 1938.

Even as the lodge was under construction other improvements on the grounds were proceeding. The nine-acre complex was landscaped, under the direction of the tree committee, with the planting of over 500 trees and shrubs. Additionally, one of the two existing blue rock trap shooting houses, both contributing structures, was constructed in 1938. In connection with the trap houses are two, triangular, spoke-shaped, cement pads (both contributing objects) for use by participating trap shooters. In June 1940 the Columbus chapter improved its trap shooting facility by purchasing and dismantling a house in town. The materials were then used to construct a trap shooting cabin which is a contributing building to the compound. A non-contributing bridge (1993) spans the Barnam Creek that connects the lodge area to the trap shooting facility.

Just north of the lodge is a small wood frame rectangular storage shed, and a rectangular frame machine shed covered with corrugated tin. Both of these are contributing structures are pheasant pens constructed in 1940. Originally, the pheasant chicks were raised in wire pens. As this activity gained importance to the local chapter, a more permanent facility became necessary. The new pens consisted of several aviaries surrounded by wood and wire fences. This allowed for a greater number of chicks to be raised with a higher survival rate.

**United States Department of the Interior
National Park Service**

**National Register of Historic Places
Continuation Sheet**

Columbus Izaak Walton League Lodge

Name of Property

Platte County, Nebraska

County and State

Section 8 Page 1

On January 14, 1922, fifty-four sportsmen met in Chicago, Illinois to discuss the deteriorating condition of America's fishing streams. Uncontrolled industrial discharges, raw sewage, and soil erosion threatened many of the country's most productive waterways. Realizing their mutual interests and concerns, that day, the group formed an organization to combat water pollution and other environmental abuses. As a reminder of this goal they named the group after Izaak Walton, the 17th century English angler-conservationist.

The Izaak Walton League of America (IWLA) grew rapidly. On April 19, 1923 they held their first national convention in Chicago. The thirty-four states that were represented passed a fourteen-point platform reinforcing their conservation program. Throughout its history the IWLA has continued to pursue their mission "to save outdoor America for future generations."

In 1924 the IWLA became active in Nebraska. Its first project was the establishment of a Walton Park in Fremont. Other chapters in Nebraska followed this up by calling for a network of county parks and support for storage reservoirs for greater water flow into the Platte River. Additional early achievements included the construction of nursery ponds for bass and trout. As the organization grew, many chapters created youth programs to educate students about conservation. League efforts included hunter education and marksmanship programs, essay contests, and anti-litter campaigns. Members also worked with farmers to teach habitat conservation and production practices. Currently (2001) there are eighteen IWLA chapters in Nebraska.

The Columbus Izaak Walton League (Ike) chapter was organized on February 4, 1925. From its inception they eagerly embraced the IWLA's mission of saving outdoor America for future generations. To achieve this goal the Columbus Ike's (as they became known) implemented several programs. On various occasions they stocked the waters in Platte County with fish, including 200,000 fish in 1938 alone. Members of the chapter gave conservation lectures at local schools on a regular basis and helped promote National Conservation Week. Other accomplishments included the planting of shade trees in rural school districts in the county, the promotion of Wildlife Restoration Week, the construction of bird houses, and raising pheasants and quail for later release into the wild. In addition, the Columbus Ike chapter has always been instrumental in promoting state legislation dealing with clean water, and habitat and wildlife protection.

Although chartered in 1925, the Columbus Ike chapter did not have a permanent home for a number of years. As the membership grew and became more active, it became increasingly evident that a lodge was necessary. By March 1937 a previously selected Building Committee reported they had looked at several buildings throughout the area that could be used as models for the Columbus Ike lodge. However, the committee still wanted to look at a new ballroom in nearby Schuyler, Nebraska. This structure was the Oak Ballroom (NeHBS #CX06-003, listed in the NRHP in 1983) designed by Emiel Christensen and completed in 1937.

In November 1937 as the planning for the lodge continued the Columbus chapter received an invaluable proposal. Its president, Harold Phillips, who owned nearby Buck Island, offered to donate all the cottonwood logs from that land free of charge if the Ikes would take them away. It did not take the members long to take advantage of this offer. By early December all the logs deemed necessary to complete the lodge were removed from the island.

While 1937 ended in a flurry with the gathering of the lumber for the lodge, 1938 saw an even more activity for the Columbus Ike chapter. In February the local Ikes began debating the question of where the new hall would be located. An offer of nine acres south of town was finally accepted by the membership in March. At sixty-five dollars per acre the total cost came to five hundred eighty-five dollars.

At the same time the chapter passed a motion stating the lodge be constructed according to architect Emiel Christensen's design. A combination of enthusiasm for the project and a lack of money led to the proposed lodge being built entirely by

United States Department of the Interior
National Park Service

National Register of Historic Places
Continuation Sheet

Columbus Izaak Walton League Lodge

Name of Property

Platte County, Nebraska

County and State

Section 8 Page 2

volunteer labor. Still, the new construction did require funding for materials. The Ikes raised the necessary funds through functions such as card parties, rummage sales, and by selling stock shares to members. With money coming in and volunteer help available, work on the lodge proceeded at a steady pace. The only delay occurred in mid-June when a robin's nest with fledglings was found beneath one portion of the roof. Adhering to their mission the members discontinued work in that area until the birds vacated the nest. The lodge was completed in August and dedicated on September 11, 1938.

The lodge, designed in the rustic style of architecture, also displays Arts and Crafts detail such as the overhanging eaves and the two large stone piers at the entrance. Constructed of logs with cement chinking the lodge, with the exception of the entrance, is covered with a stone veneer. The slightly pitched roof, originally covered with wood shingles, currently has asphalt shingles. The interior retains the same rustic design as the exterior, however the cottonwood logs are exposed and the remaining wood support structures and decorative trim are of native oak.

Even as the hall was under construction other improvements were also proceeding on the grounds. The nine-acre complex was landscaped, under the direction of the chapter's tree committee, with the planting of over 500 trees and shrubs. Additionally, the Columbus Ike chapter added two blue rock trap shooting houses, two triangular, spoke-shaped, cement pads for use by participating trap shooters, and a reconstructed (1940) trap shooting cabin all of which contributed to the importance and emphasis the IWLA's placed on outdoor recreation.

Another contributing structure to the lodge's compound was the pheasant pens constructed in 1940. The Columbus chapter had long been involved in the raising and distribution of pheasants. In the program's infancy the chicks were kept in wire pens. However, this activity picked up dramatically in 1939-40. As a result, with the help of the State Game Commission and the federal government, the Columbus Ikes constructed pheasant pens that would allow them to accommodate more chicks in a healthier environment. Again, this fit in with the IWLA's conservation mission.

The Columbus Izaak Walton League Lodge was designed by Emiel Christensen, a prominent Nebraska architect. Born in Washington County, Nebraska, on April 23, 1895, Mr. Christensen received his architectural education at Washington University in St. Louis, Missouri. Following World War I, he was employed with architectural firms in Omaha, Nebraska and Jacksonville, Florida. In 1928 Mr. Christensen established his own architectural office in Columbus, Nebraska. He is best known for his works involving projects dealing with small community planning and the conservation and utilization of the natural environment of Nebraska, especially dedicated to the creative use of leisure time for all people. His involvement in professional organizations included: Coordinator of Community Services at the University of Nebraska, member of the American Society of Planning Officials, the Community Planning Association of Canada, the Architectural Forums Editorial Advisory, Nebraska Chapter A.I.A., and consulting architect to farm journals and periodicals. Additionally, Mr. Christensen was very active in numerous civic activities. Although he was not a member of the Izaak Walton League his philosophy on the conservation and recreational use of the natural environment coincided very closely. This concept is especially reflected in two of his more prominent works. The first was the Oak Ballroom (CX06-003, 1937) in Schuyler. Based on this rustic-style design the building committee for the Columbus chapter of IWLA chose Mr. Christensen to design a similar style building for their lodge. When comparing these two buildings the similarity in design is quite obvious.

The Columbus Izaak Walton League Lodge is eligible at the local level under Criterion A. It is significant at the local level for its association with the Izaak Walton League of America and the fulfillment of its espoused conservation mission. From its inception, the Columbus Ike chapter actively pursued the stocking of fish and wild game birds. Additionally, the chapter took a strong interest in enforcing state hunting laws and promoting innovative legislation dealing with wildlife, water, and habitat conservation.

**United States Department of the Interior
National Park Service**

**National Register of Historic Places
Continuation Sheet**

Columbus Izaak Walton League Lodge

Name of Property

Platte County, Nebraska

County and State

Section 8 Page 3

Additionally, the Columbus Izaak Walton League Lodge is eligible at the local level under Criterion C for its association with architecture. The building stands as a major landmark in the area, designed by the renowned, local architect Emiel Christensen. Designed in the rustic style, the building also displays Arts and Crafts details. The idea of rustic architecture became popular during the late 19th century in the Adirondack Mountains in New York. The use of natural or "organic" materials in the lodge's construction gives the building its rustic character and reflects the architects desire to utilize available and plentiful resources. Furniture designed in this rustic style, i.e. the oak pedestal tables is also found in the interior of the lodge. Based on information in the Nebraska Historic Buildings Survey the Columbus Izaak Walton League Lodge is a unique structure that retains a remarkably high degree of integrity on both the interior and exterior.

**United States Department of the Interior
National Park Service**

**National Register of Historic Places
Continuation Sheet**

Columbus Izaak Walton League Lodge

Name of Property

Platte County, Nebraska

County and State

Section 9 Page 1

BIBLIOGRAPHY

Columbus Chapter of Izaak Walton League of America. Meeting Minutes.

Gilkerson, Joni. "Oak Ballroom." Lincoln: Nebraska State Historic Preservation Office, September 1982.

Newspapers

The Columbus News

Verbal Boundary Description

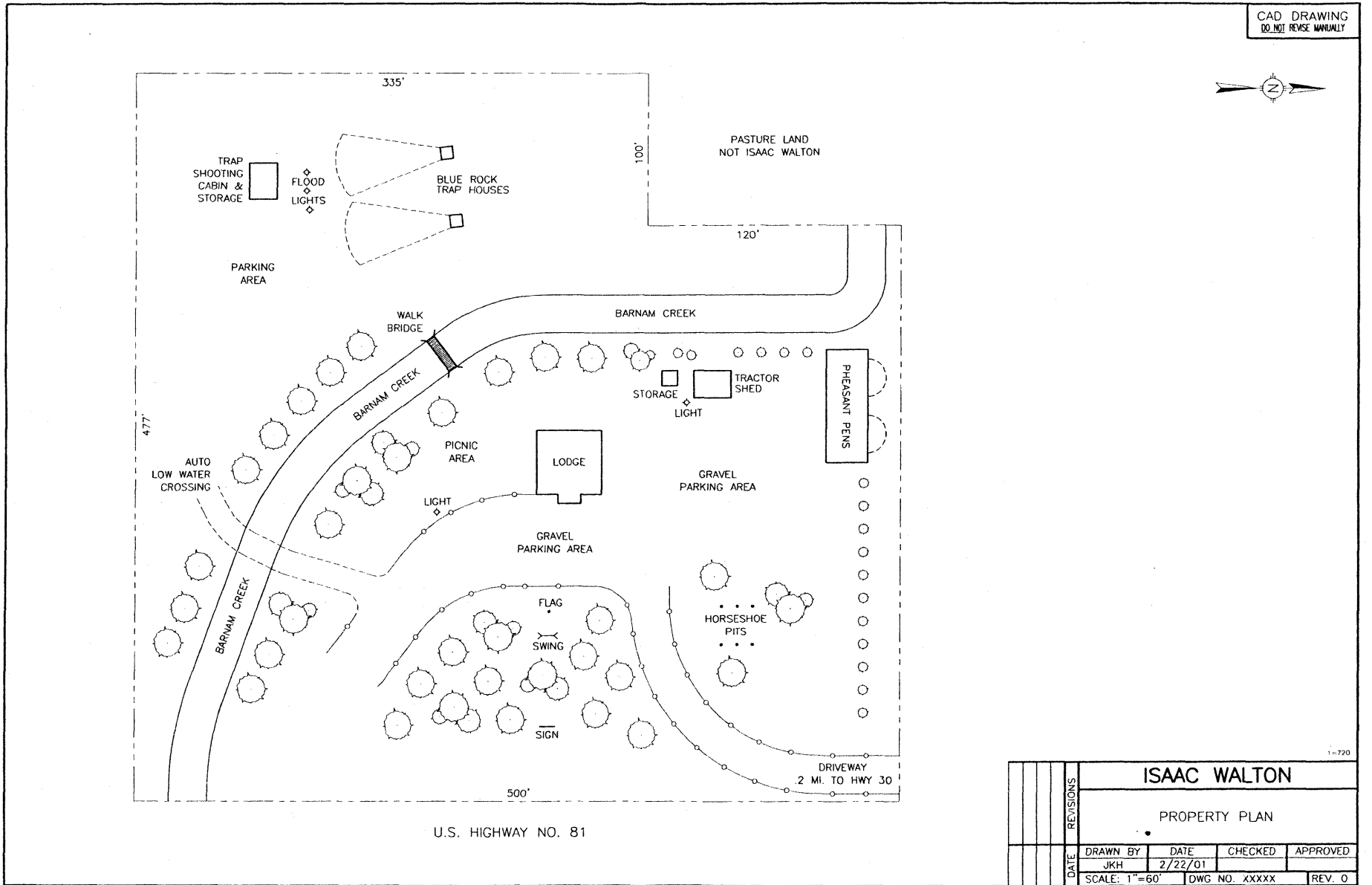
Beginning at a point 1,335.00 feet South and 50.00 feet West of the Northeast Section corner of said section 36; thence West 635 feet parallel with the north line of said section 36; thence North 640 feet parallel with the east line of said section 36 to the west line of the right-of-way of State Highway number 81; thence southerly along said west line of said right-of-way of Highway number 81 on a 1,196 feet radius curve to point of tangent; thence south parallel with the east line of said section 36 to the point of beginning; the parcel of land containing a calculated at 9 acres more or less.

Boundary Justification

The boundary contains that parcel of land which has historically been associated with the property

Columbus Izaak Walton League Lodge Platte County, Nebraska

CAD DRAWING
DO NOT REVISE MANUALLY



ISAAC WALTON			
PROPERTY PLAN			
DATE	DRAWN BY	DATE	CHECKED
	JKH	2/22/01	
	SCALE: 1"=60'		DWG NO. XXXXX
			REV. 0