



1. West Tampa Historic District
2. 1910 Lemon Street
(Hillsborough County), FL
3. Robin Krawitz
4. 1983
5. Florida Division of Archives,
History and Records Management
6. North Facade
7. Photo 1 of 309



1. West Tampa Historic District
2. 1917 Lemon Street
(Hillsborough County), FL
3. Robin Krawitz
4. 1983
5. Florida Division of Archives,
History and Records Management
6. South Facade
7. Photo 2 of 309



1. West Tampa Historic District
2. 2101 Lemon Street
(Hillsborough County), FL
3. Robin Krawitz
4. 1983
5. Florida Division of Archives,
History and Records Management
6. South Facade
7. Photo **3** of **309**



1. West Tampa Historic District
2. 2110 Lemon Street
(Hillsborough County), FL
3. Robin Krawitz
4. 1983
5. Florida Division of Archives,
History and Records Management
6. North Facade
7. Photo 4 of 309



1. West Tampa Historic District
2. 2122 West Chestnut Street
(Hillsborough County), FL
3. Robin Krawitz
4. 1983
5. Florida Division of Archives,
History and Records Management
6. North Facade
7. Photo **91** of **309**



1. West Tampa Historic District
2. 2510 W. Chestnut Street
(Hillsborough County), FL
3. Robin Krawitz
4. 1983
5. Florida Division of Archives,
History and Records Management
6. North Facade
7. Photo 92 of 309

FIRE STATION NO. 9



1. West Tampa Historic District
2. 2525 W. Chestnut Street
(Hillsborough County); FL
3. Robin Krawitz
4. 1983
5. Florida Division of Archives,
History and Records Management
6. South Facade
7. Photo **93** of *309*



1. West Tampa Historic District
2. 2706 W. Chestnut Avenue
(Hillsborough County), FL
3. Robin Krawitz
4. 1983
5. Florida Division of Archives,
History and Records Management
6. North Facade
7. Photo 94 of 309



1. West Tampa Historic District
2. 2739 W. Chestnut Street
(Hillsborough County), FL
3. Robin Krawitz
4. 1983
5. Florida Division of Archives,
History and Records Management
6. South Facade
7. Photo 95 of 309



1. West Tampa Historic District
2. 2402 W. Chestnut Street
(Hillsborough County), FL
3. Robin Krawitz
4. 1983
5. Florida Division of Archives,
History and Records Management
6. North Facade
7. Photo 96 of 309



1. West Tampa Historic District
2. West Chestnut Street, Tampa,
(Hillsborough County), FL
3. Carl Shiver
4. 1982
5. Florida Division of Archives,
History and Records Management
6. North Side of West Chestnut Street
Looking East Toward North Howard
Avenue
7. Photo

97 OF 309



1. West Tampa Historic District
2. 2927 West Chestnut
(Hillsborough County), FL
3. Robin Krawitz
4. 1983
5. Florida Division of Archives,
History and Records Management
6. North Facade
7. Photo 98 of 309



1. West Tampa Historic District
2. 1741 West Spruce Street
(Hillsborough County), FL
3. Robin Krawitz
4. 1983
5. Florida Division of Archives,
History and Records Management
6. South Facade
7. Photo **99** of **309**



1. West Tampa Historic District
2. 1904 West Spruce Street
(Hillsborough County), FL
3. Robin Krawitz
4. 1983
5. Florida Division of Archives,
History and Records Management
6. North Facade
7. Photo **100** of **309**



18207

1. West Tampa Historic District
2. 1909 West Spruce Street
(Hillsborough County), FL
3. Robin Krawitz
4. 1983
5. Florida Division of Archives,
History and Records Management
6. South Facade
7. Photo **101** of **309**



1. West Tampa Historic District
2. 1936 West Spruce Street
(Hillsborough County), FL
3. Robin Krawitz
4. 1983
5. Florida Division of Archives,
History and Records Management
6. North Facade
7. Photo **102** of **309**



1. West Tampa Historic District
2. 2105 West Spruce Street
(Hillsborough County), FL
3. Robin Krawitz
4. 1983
5. Florida Division of Archives,
History and Records Management
6. South Facade
7. Photo **103** of **309**



1. West Tampa Historic District
2. 2124 West Spruce Street
(Hillsborough County), FL
3. Robin Krawitz
4. 1983
5. Florida Division of Archives,
* History and Records Management
6. North Facade
7. Photo **104** of **309**



1. West Tampa Historic District
2. 2312 West Spruce Street
(Hillsborough County), Fl
3. Robin Krawitz
4. 1983
5. Florida Division of Archives,
History and Records Management
6. North Facade
7. Photo **105** of **309**



1. West Tampa Historic District
2. 2337 West Spruce Street
(Hillsborough County), FL
3. Robin Krawitz
4. 1983
5. Florida Division of Archives,
History and Records Management
6. South Facade
7. Photo **106** of **309**



1. West Tampa Historic District
2. 2531 W. Spruce Street
(Hillsborough County), FL
3. Robin Krawitz
4. 1983
5. Florida Division of Archives,
History and Records Management
6. S. Facade
7. Photo **107** of ~~309~~



1. West Tampa Historic District
2. 2715 West Spruce Street, Tampa
(Hillsborough County), FL
3. Carl Shiver
4. 1982
5. Florida Division of Archives,
History and Records Management
6. South (Main Entrance) Facade and
East Elevation
7. Photo

108 / 309



2724

1. West Tampa Historic District
2. 2724 West Spruce Street, Tampa
(Hillsborough County), FL
- 3.* Carl Shiver
4. 1982
5. Florida Division of Archives,
History and Records Management
6. North (Main Entrance) Facade
7. Photo

109 / 309



1. West Tampa Historic District
2. 2905 W. Spruce Street
(Hillsborough County), FL
3. Robin Krawitz
4. 1983
5. Florida Division of Archives,
History and Records Management
6. South Facade
7. Photo **110** of **309**



1. West Tampa Historic District
2. 2920 W. Spruce Street
(Hillsborough County), FL
3. Robin Krawitz
4. 1983
5. Florida Division of Archives,
History and Records Management
6. North Facade
7. Photo **111** of **309**



1. R. Mugge Cigar Factory, West Tampa Historic District
2. 1801 North Habana Avenue, Tampa (Hillsborough County), FL
3. Carl Shiver
4. 1982
5. Florida Division of Archives, History and Records Management
6. West (Main Entrance) Facade and South Elevation
7. Photo 112 / 309



1. West Tampa Historic District
2. 1802 N. Tampania Avenue
(Hillsborough County), FL
3. Robin Krawitz
4. 1983
5. Florida Division of Archives,
History and Records Management
6. East Facade
7. Photo **113** of **309**



1. West Tampa Historic District
2. 1808 N. Tampania Avenue
(Hillsborough County), FL
3. Robin Krawitz
4. 1983
5. Florida Division of Archives,
History and Records Management
6. North Facade
7. Photo **114** of **309**



1. West Tampa Historic District
2. 1902 N. Tampania Avenue
(Hillsborough County), FL
3. Robin Krawitz
4. 1983
5. Florida Division of Archives,
History and Records Management
6. ~~North~~ Facade
7. Photo 115 of 309



1. West Tampa Historic District
2. 1804-1810 North Armenia Avenue
3. Carl Shiver
4. 1982
5. Florida Division of Archives, History
and Records Management
6. East Facades of Houses on West Side
of Armenia Avenue Near Intersection of
West Union Street
7. Photo

116 / 309

1904

A. SANTAE LA
& CO.

SOUTHERN MILL CREEK PRODUCTS CO.



1. Santaella Cigar Factory, West Tampa
Historic District
2. 1906 North Armenia Avenue, Tampa
3. Carl Shiver
4. 1982
5. Florida Division of Archives,
History and Records Management
6. East (Main Entrance) Facade
7. Photo

117 / 309

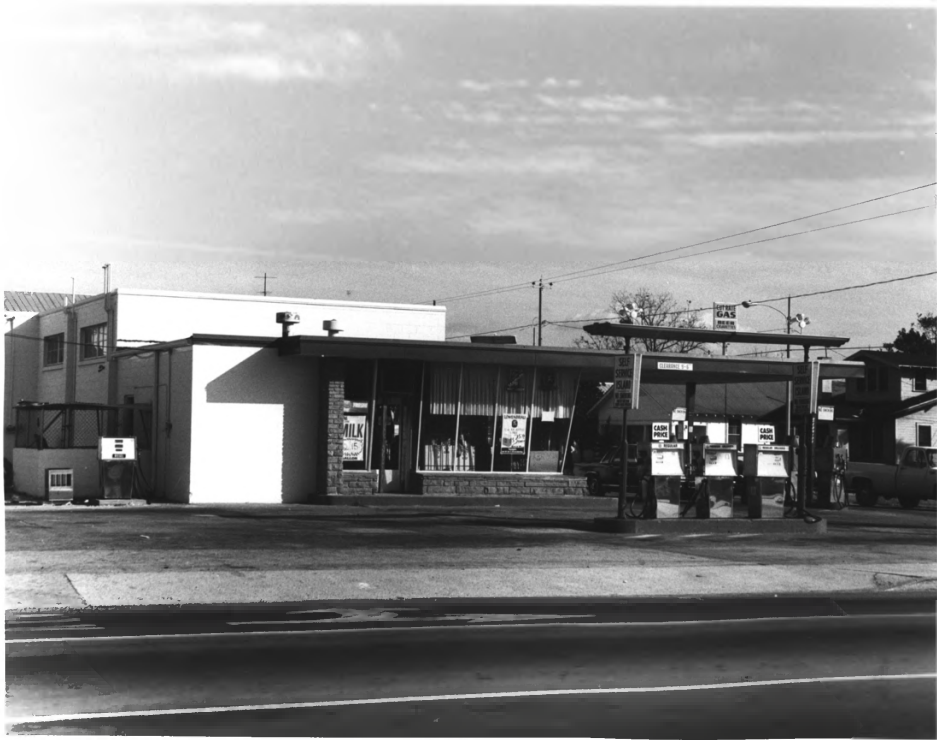


MAIN STREET OPTICAL

2001

OPEN

1. West Tampa Historic District
2. 2001 North Armenia Avenue
(Hillsborough County), FL
3. Robin Krawitz
4. 1983
5. Florida Division of Archives,
History and Records Management
6. West Facade
7. Photo **118** of **309**



1. West Tampa Historic District
2. 1714 North Armenia Avenue, Tampa
(Hillsborough County), FL
3. Carl Shiver
4. 1982
5. Florida Division of Archives, History
and Records Management
6. East Facade
7. Photo 119

309



GARDEN SUPPLIES

RENTAL TOOLS

PAINTS

HARDWARE

485 1807

485 1807

1. Old State Bank of West Tampa
West Tampa Historic District
2. 1615 North Howard Avenue, Tampa
(Hillsborough County), FL.
3. Carl Shiver
4. 1982
5. Florida Division of Archives,
History and Records Management
6. North (West Main Street) Facade
7. Photo

120 / 309



1. Carnegie Library, West Tampa Historic District
2. 1716 North Howard Avenue, Tampa (Hillsborough County), FL
4. 1982
5. Florida Division of Archives, History and Records Management
6. East (Main Entrance) Facade
7. Photo 121 / 309



1931

← ALESSI BREWERY →

Alessi
BAKERY

DOORS
LOCKS

1. Old Alessi Bakery, West Tampa
Historic District
2. 1812 North Howard Avenue, Tampa
(Hillsborough County), FL
3. Carl Shiver
4. 1982
5. Florida Division of Archives,
History and Records Management
6. East Facade
7. Photo

122 / 309

ssi

BI SALES STORE
PINT
DOORS
LOCKS

DOORS O N
S SALE!

HARDWARE

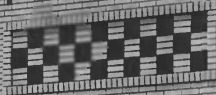
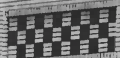


1. West Tampa Historic District
2. 1902 North Howard Avenue, Tampa
(Hillsborough County), FL
3. Robin Krawitz
4. 1983
5. Florida Division of Archives,
History and Records Management
6. South Elevation and East Facade
7. Photo **123** of **309**



1. West Tampa Historic District
2. 1911-19 North Howard Avenue
(Hillsborough County), FL
3. Robin Krawitz
4. 1983
5. Florida Division of Archives,
History and Records Management
6. West Facade
7. Photo 124 of 309

1928
LANUOVA VITA. INC.



1. West Tampa Historic District
2. 2011-2013 North Howard Avenue
(Hillsborough County), FL
3. Robin Krawitz
4. 1983
5. Florida Division of Archives,
History and Records Management
6. West Facade
7. Photo **125** of **309**



1. West Tampa Historic District
2. 1715-17 North Albany Avenue
(Hillsborough County), FL
3. Robin Krawitz
4. 1983
5. Florida Division of Archives,
History and Records Management
6. West Facade
7. Photo **126** of **309**

ALDEZ SETTLEMENT



1. West Tampa Historic District
2. 1802 North Albany Avenue
(Hillsborough County), FL
3. Robin Krawitz
4. 1983
5. Florida Division of Archives,
History and Records Management
6. East Facade
7. Photo **127** of **309**



1. Old West Tampa Methodist Episcopal Church,
West Tampa Historic District
2. 1805 North Albany Avenue, Tampa
(Hillsborough County), FL
3. Carl Shiver
4. 1982
5. Florida Division of Archives, History and
Records Management
6. West (Main Entrance) Facade and
North Elevation
7. Photo 128/309



1. West Tampa Historic District
2. 1916 North Albany Avenue
(Hillsborough County), FL
3. Robin Krawitz
4. 1983
5. Florida Division of Archives,
History and Records Management
6. East Facade
7. Photo **129** of **309**



1. West Tampa Historic District
2. 2140 West Walnut Street
(Hillsborough County), FL
3. Robin Krawitz
4. 1983
5. Florida Division of Archives,
History and Records Management
6. North Facade
7. Photo **136** of **309**



1. West Tampa Historic District
2. 2307 West Walnut Street
(Hillsborough County), FL
3. Robin Krawitz
4. 1983
5. Florida Division of Archives,
History and Records Management
6. South Facade
7. Photo **137** of **309**



1. West Tampa Historic District
2. 2330 West Walnut Street
(Hillsborough County), FL
3. Robin^r Krawitz
4. 1983
5. Florida Division of Archives,
History and Records Management
6. North Facade
7. Photo **138** of **309**



1. West Tampa Historic District
2. 2519 W. Walnut Street
(Hillsborough County), FL
3. Robin Krawitz
4. 1983
5. Florida Division of Archives,
History and Records Management
6. South Facade
7. Photo **139** of **309**



1. West Tampa Historic District
2. 2536 W. Walnut Street
(Hillsborough County), FL
3. Robin Krawitz
4. 1983
5. Florida Division of Archives,
History and Records Management
6. North Facade
7. Photo **140** of **309**



1. West Tampa Historic District
2. 2722 W. Walnut Street
(Hillsborough County), FL
3. Robin Krawitz
4. 1983
5. Florida Division of Archives,
History and Records Management
6. North Facade
7. Photo **141** of ~~309~~



1. West Tampa Historic District
2. 2914 W. Walnut Street
(Hillsborough County), FL
3. *Robin Krawitz
4. 1983
5. Florida Division of Archives,
History and Records Management
6. North Facade
7. Photo **142** of **309**



1. West Tampa Historic District
2. 2921 Walnut Street
(Hillsborough County), FL
3. Robin Krawitz
4. 1983
5. Florida Division of Archives,
History and Records Management
6. South Facade
7. Photo **143** of **309**



1. West Tampa Historic District
2. 1743 West Pine Street
(Hillsborough County), FL
3. Robin Krawitz
4. 1983
5. Florida Division of Archives,
History and Records Management
6. South Façade
7. Photo 144 of 309



1. West Tampa Historic District
2. 1916 West Pine Street
(Hillsborough County), FL
3. Robin Krawitz
4. 1983
5. Florida Division of Archives,
History and Records Management
6. North Facade
7. Photo **145** of **309**



1. West Tampa Historic District
2. 1929 West Pine Street
(Hillsborough County), FL
3. Robin Krawitz
4. 1983
5. Florida Division of Archives,
History and Records Management
6. South Facade
7. Photo **146** of **309**



1. West Tampa Historic District
2. 2102 West Pine Street
(Hillsborough County), FL
3. Robin Krawitz
4. 1983
5. Florida Division of Archives,
History and Records Management
6. North Facade
7. Photo **147** of **309**



1. West Tampa Historic District
2. 2129 West Pine Street
(Hillsborough County), FL
3. Robin Krawitz
4. 1983
5. Florida Division of Archives,
History and Records Management
6. South Facade
7. Photo 148 of 309



1. West Tampa Historic District
2. 2323 West Pine Street
(Hillsborough County), FL
3. Robin Krawitz
4. 1983
5. Florida Division of Archives,
History and Records Management
6. South Facade
7. Photo **150** of **309**



NO
PARKING

1. West Tampa Historic District
2. 2324 West Pine Street
(Hillsborough County), FL
3. Robin Krawitz
4. 1983
5. Florida Division of Archives,
History and Records Management
6. North Facade
7. Photo **151** of **309**



1. West Tampa Historic District
2. 2503 W. Pine Street
(Hillsborough County), FL
3. Robin Krawitz
4. 1983
5. Florida Division of Archives,
History and Records Management
6. South Facade
7. Photo **152** of **509**



1. West Tampa Historic District
2. 2538 W. Pine Street
(Hillsborough County), FL
3. Robin Krawitz
4. 1983
5. Florida Division of Archives,
History and Records Management
6. North Facade
7. Photo **153** of **309**



1. West Tampa Historic District
2. 2927 W. Pine Street
(Hillsborough County), FL
3. Robin Krawitz
4. 1983
5. Florida Division of Archives,
History and Records Management
6. South Facade
7. Photo **154** of **309**



1. West Tampa Historic District
2. 1902 West Cherry Street
(Hillsborough County), FL
3. Robin Krawitz
4. 1983
5. Florida Division of Archives,
History and Records Management
6. North Facade
7. Photo

155/309



1. West Tampa Historic District
2. 1911 West Cherry Street
(Hillsborough County), FL
3. Robin Krawitz
4. 1983
5. Florida Division of Archives,
History and Records Management
6. South Facade
7. Photo **156** of **309**



1. West Tampa Historic District
2. 1934 West Cherry Street
(Hillsborough County), FL
3. Robin Krawitz
4. 1983
5. Florida Division of Archives,
History and Records Management
6. North Facade
7. Photo **157** of **309**



1. West Tampa Historic District
2. 2109 West Cherry Street
(Hillsborough County), FL
3. Robin Krawitz
4. 1983
5. Florida Division of Archives,
History and Records Management
6. South Facade
7. Photo **158** of *309*



1. West Tampa Historic District
2. 2128 West Cherry Street
(Hillsborough County), FL
3. Robin Krawitz
4. 1983
5. Florida Division of Archives,
History and Records Management
6. North Facade
7. Photo **159** of **309**



1. West Tampa Historic District
2. 2314 West Cherry Street
(Hillsborough County), FL
3. Robin Krawitz
4. 1983
5. Florida Division of Archives,
History and Records Management
6. North Facade
7. Photo **160** of *309*



1. West Tampa Historic District
2. 2332-2334 West Cherry Street, Tampa
(Hillsborough County), FL
3. Carl Shiver
4. 1982
5. Florida Division of Archives,
History and Records Management
6. Houses on South Side of West
Cherry Street Near Intersection
of North Armenia Avenue
7. Photo **161** / 309



1. West Tampa Historic District
2. 2337 West Cherry Street
(Hillborough County), FL
3. Robin Krawitz
4. 1983
5. Florida Division of Archives,
History and Records Management
6. South Facade
7. Photo **162** of **309**



1. West Tampa Historic District
2. 2513 W. Cherry Street
(Hillsborough County), FL
3. Robin Krawitz
4. 1983
5. Florida Division of Archives,
History and Records Management
6. South Facade
7. Photo **163** of *309*



1. West Tampa Historic District
2. 2536 W. Cherry Street
(Hillsborough County), FL
3. Robin Krawitz
4. 1983
5. Florida Division of Archives,
History and Records Management
6. North Facade
7. Photo **164** of **309**



1. West Tampa Historic District
2. 2717 W. Cherry Street
(Hillsborough County), FL
3. Robin Krawitz
4. 1983
5. Florida Division of Archives,
History and Records Management
6. South Facade
7. Photo **165** of **309**



1. West Tampa Historic District
2. 2902 W. Cherry Street
(Hillsborough County), FL
3. Robin Krawitz
4. 1983
5. Florida Division of Archives,
History and Records Management
6. North Facade
7. Photo **166** of **309**



1. West Tampa Historic District
2. 2951 W. Cherry Street
(Hillsborough County), FL
3. Robin Krawitz
4. 1983
5. Florida Division of Archives,
History and Records Management
6. South Facade
7. Photo 167 of 309



1. West Tampa Historic District
2. 1722 West Palmetto Street
(Hillsborough County), FL
3. Robin Krawitz
4. 1983
5. Florida Division of Archives,
History and Records Management
6. North Facade
7. Photo 168 of 309



1. West Tampa Historic District
2. 1918 West Palmetto Street
(Hillsborough County), FL
3. Robin Krawitz
4. 1983
5. Florida Division of Archives,
History and Records Management
6. North Facade
7. Photo **169** of **309**



1. West Tampa Historic District
2. 2109 West Palmetto Street
(Hillsborough County), FL
3. Robin Krawitz
4. 1983
5. Florida Division of Archives,
History and Records Management
6. South Facade
7. Photo **173** of **309**



1. West Tampa Historic District
2. 2112 West Palmetto Street
(Hillsborough County), FL
3. Robin Krawitz
4. 1983
5. Florida Division of Archives,
History and Records Management
6. North Facade
7. Photo 171 of 309



1. West Tampa Historic District
2. 2308 West Palmetto Street
(Hillsborough County), FL
3. Robin Krawitz
4. 1983
5. Florida Division of Archives,
History and Records Management
6. North Facade
7. Photo 172 of 309



1. West Tampa Historic District
2. 2338 West Palmetto Street
(Hillsborough County), FL
3. Robin Krawitz
4. 1983
5. Florida Division of Archives,
History and Records Management
6. North Facade
7. Photo 173 of 309



1. West Tampa Historic District
2. 2510 W. Palmetto Street
(Hillsborough County), FL
3. Robin Krawitz
4. 1983
5. Florida Division of Archives,
History and Records Management
6. North Facade
7. Photo 174 of 309



1. West Tampa Historic District
2. 2529 W. Palmetto Street
(Hillsborough County), FL
3. Robin Krawitz
4. 1983
5. Florida Division of Archives,
* History and Records Management
6. South Facade
7. Photo 175 of 309



1. West Tampa Historic District
2. 2709 W. Palmetto Street
(Hillsborough County), FL
3. Robin Krawitz
4. 1983
5. Florida Division of Archives,
History and Records Management
6. South Facade
7. Photo 176 of 309



1. West Tampa Historic District
2. 2718 W. Palmetto
(Hillsborough County), FL
3. Robin Krawitz
4. 1983
5. Florida Division of Archives,
History and Records Management
6. North Facade
7. Photo 177 of 309



1. West Tampa Historic District
2. 2914 W. Palmetto Street
(Hillsborough County), FL
3. Robin Krawitz
4. 1983
5. Florida Division of Archives,
History and Records Management
6. North Facade
7. Photo 178 of 309



1. West Tampa Historic District
2. 2925 W. Palmetto Street
(Hillsborough County), FL
3. Robin Krawitz
4. 1983
5. Florida Division of Archives,
History and Records Management
6. South Facade
7. Photo 179 of 309



1. West Tampa Historic District
2. 1908 Beach Street
(Hillsborough County), FL
3. Robin Krawitz
4. 1983
5. Florida Division of Archives,
History and Records Management
6. North Facade
7. Page 180 of 309



1. West Tampa Historic District
2. 1933 Beach Street
(Hillsborough County), FL
3. Robin Krawitz
4. 1983
5. Florida Division of Archives,
History and Records Management
6. South Facade
7. Page 181 of 309



1. West Tampa Historic District
2. 2126 Beach Street
(Hillsborough County), FL
3. Robin Krawitz
4. 1983
5. Florida Division of Archives,
History and Records Management
6. North Facade
7. Page 182 of 309



1. West Tampa Historic District
2. 2139 Beach Street
(Hillsborough County), FL
3. Robin Krawitz
4. 1983
5. Florida Division of Archives,
History and Records Management
6. South Facade
7. Page 183 of 309



1. West Tampa Historic District
2. 2317 Beach Street
(Hillsborough County), FL
3. Robin Krawitz
4. 1983
5. Florida Division of Archives,
History and Records Management
6. South Facade
7. Page 184 of 309



1. West Tampa Historic District
2. 2334 West Beach Street, Tampa (Hillsborough County), FL
3. Carl Shiver
4. 1982
5. Florida Division of Archives, History and Records Management
6. North (Main Entrance) Facade and East Elevation
7. Photo 185/309



1. West Tampa Historic District
2. 2344 Beach Street
(Hillsborough County), FL
3. Robin Krawitz
4. 1983
5. Florida Division of Archives,
History and Records Management
6. North Facade
7. Page 186 of 309



1. West Tampa Historic District
2. 2705 W. Beach Street
(Hillsborough County), FL
3. Robin Krawitz
4. 1983
5. Florida Division of Archives,
History and Records Management
6. South Facade
7. Photo 187 of 309



1. West Tampa Historic District
2. 1904 St. Conrad Street
(Hillsborough County), FL
3. Robin Krawitz
4. 1983
5. Florida Division of Archives,
History and Records Management
6. North Facade
7. Page 188 of 309



1. West Tampa Historic District
2. 1917 St. Conrad Street
(Hillsborough County), FL
3. Robin Krawitz
4. 1983
5. Florida Division of Archives,
History and Records Management
6. South Facade
7. Page 189 of 309



1. West Tampa Historic District
2. 2125 St. Conrad Street
(Hillsborough County), FL
3. Robin Krawitz
4. 1983
5. Florida Division of Archives,
History and Records Management
6. South Facade
7. Photo 190 of 309



1. West Tampa Historic District
2. 2132 St. Conrad
(Hillsborough County), FL
3. Robin Krawitz
4. 1983
5. Florida Division of Archives,
History and Records Management
6. North Facade
7. Photo 191 of 309



1. West Tampa Historic District
2. 2517 W. St. Conrad Street
(Hillsborough County), FL
3. Robin Krawitz
4. 1983
5. Florida Division of Archives,
History and Records Management
6. South Facade
7. Photo 192 of 309



W St Conrad 314

314

1. West Tampa Historic District
2. 2606-08 St. Conrad Street
(Hillsborough County), FL
3. Robin Krawitz
4. 1983
5. Florida Division of Archives,
History and Records Management
6. North Facade
7. Photo 193 of 309



1. West Tampa Junior High School, West Tampa Historic District
2. 2105 North Habana Avenue, Tampa (Hillsborough County), FL
3. Carl Shiver
4. 1982
5. Florida Division of Archives, History and Records Management
6. West (Main Entrance) Facade
7. Photo

194/309



1. West Tampa Historic District
2. 2101 N. Armenia Avenue
(Hillsborough County), FL
3. Robin Krawitz
4. 1983
5. Florida Division of Archives,
History and Records Management
6. West Facade
7. Photo 195 of 309



1. West Tampa Historic District
2. 2110 N. Armenia Avenue
(Hillsborough County), FL
3. Robin Krawitz
4. 1983
5. Florida Division of Archives,
History and Records Management
6. East Facade
7. Photo 196 of 309



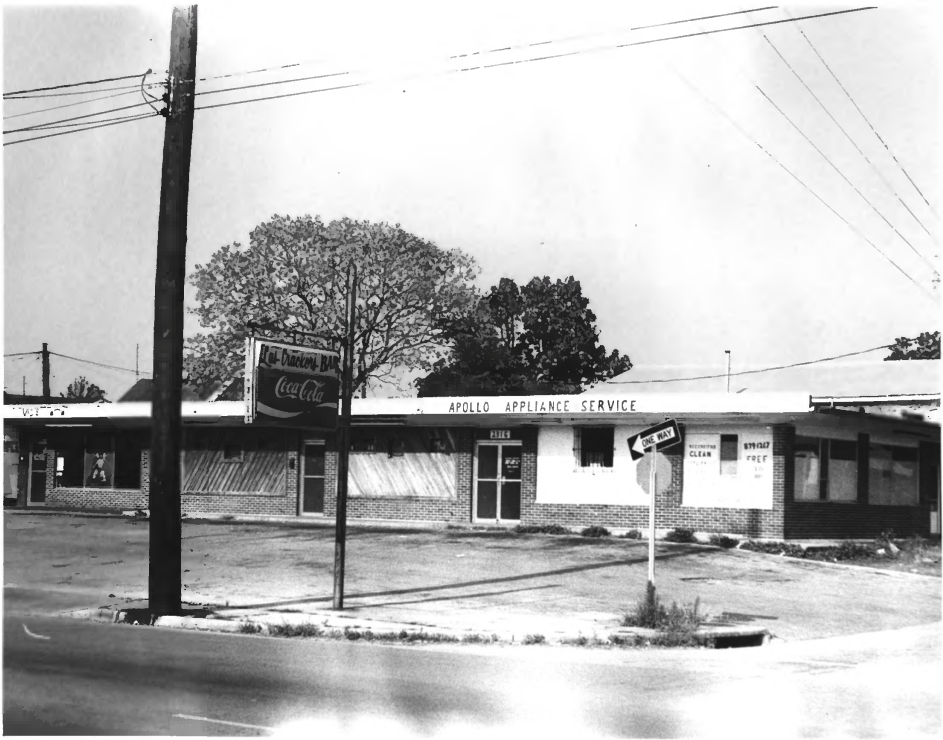
1. West Tampa Historic District
2. 2201 N. Armenia Avenue
(Hillsborough County), FL
3. Robin Krawitz
4. 1983
5. Florida Division of Archives,
History and Records Management
6. South Elevation
7. Photo 197 of 309



1. West Tampa Historic District
2. 2206-08 North Armenia Avenue
(Hillsborough County), FL
3. Robin Krawitz
4. 1983
5. Florida Division of Archives,
History and Records Management
6. East Facade
7. Photo 198 of 309



1. West Tampa Historic District
2. 2302-2306 North Armenia Avenue,
Tampa (Hillsborough County), FL
3. Carl Shiver
4. 1982
5. Florida Division of Archives,
History and Records Management
6. Houses on West Side of North
Armenia Avenue at the Intersection
of West Cherry Street
7. Photo 199 / 309



Pal-Dracow-Ban
Coca-Cola

APOLLO APPLIANCE SERVICE

REPAIRS

ONE WAY

REPAIRS
CLEAN
FREE

1. West Tampa Historic District
2. 2310-2316 North Armenia Avenue
(Hillsborough County), FL
3. Robin Krawitz
4. 1983
5. Florida Division of Archives,
History and Records Management
6. East Facade
7. Photo 200 of 309



1. West Tampa Historic District
2. ~~2213~~ 213 North Armenia Avenue, Tampa,
(Hillsborough County), FL
3. Carl Shiver
4. 1982
5. Florida Division of Archives,
History and Records Management
6. West Facade and South Elevation
7. Photo 201 / 309



1. West Tampa Historic District
2. 2404 North Armenia Avenue
(Hillsborough County), FL
3. Robin Krawitz
4. 1983
5. Florida Division of Archives,
History and Records Management
6. East Facade
7. Photo *202* of *309* :



1. West Tampa Historic District
2. 2411-2415 North Armenia Avenue, Tampa
(Hillsborough County), FL
3. Carl Shiver
4. 1982
5. Florida Division of Archives, History
and Records Management
6. Facades of Three Houses on West Side of
North Armenia Avenue at Intersection of
West Beach Street
7. Photo 203/309



1. West Tampa Historic District
2. 2511 North Armenia Avenue, Tampa
(Hillsborough County), FL
3. Carl Shiver
4. 1982
5. Florida Division of Archives, History
and Records Management
6. West (Main Entrance) Facade
7. Photo

204/309



JAZZ-AT GRILL

HOWARD AVENUE
Burger-Bars
Complete Building
Helliarc Gas and Arc.

Thun.



1. West Tampa Historic District
2. 2108-10 North Howard Avenue
(Hillsborough County), FL
3. Robin Krawitz
4. 1983
5. Florida Division of Archives,
History and Records Management
6. East Facade
7. Photo 205 of 309

Olympia BAKERY
AND
CATERERS

MAKERS OF
SANDWICHES



1. West Tampa Historic District
2. 2201 North Howard Avenue
(Hillsborough County), FL
3. Robin Krawitz
4. 1983
5. Florida Division of Archives,
History and Records Management
6. South Facade
7. Photo 206 of 809



LUCKEY 7
GROCERIES - MARKET

DRINK
Coca-Cola

1. West Tampa Historic District
2. 2207 North Howard Avenue
(Hillsborough County), FL
3. Robin Krawitz
4. 1983
5. Florida Division of Archives,
History and Records Management
6. West Facade
7. Photo 207 of 309



CENTRO ESPAÑOL

ONE WAY

STOP

MUSIC BUS 5400

CPO

1. Centro Espanol, West Tampa Historic District
2. 2300 North Howard Avenue, Tampa (Hillsborough County), FL
3. Carl Shiver
4. 1982
5. Florida Division of Archives, History and Records Management
6. East (Main Entrance) Facade
7. Photo 208 / 309



1. Cuesta Rey Cigar Factory, West Tampa
Historic District
2. 2416 North Howard Avenue, Tampa,
(Hillsborough County), FL
3. Carl Shiver
4. 1982
5. Florida Division of Archives, History
and Records Management
6. East (Main Entrance) Facade and
South Elevation
7. Photo 209 / 309



GOLD NUGGET
TAYLOR
RENT A CAR

GOLD NUGGET
TAYLOR
RENT A CAR

GOLD NUGGET
TAYLOR
RENT A CAR

1. West Tampa Historic District
2. 2502 North Howard Avenue, Tampa
(Hillsborough County), FL
3. Carl Shiver
4. 1982
5. Florida Division of Archives,
History and Records Management
6. South Elevation and East Facade
7. Photo

210 / 309



1. West Tampa Historic District
2. 2401 North Howard Avenue
(Hillsborough County), FL
3. Robin Krawitz
4. 1983
5. Florida Division of Archives,
History and Records Management
6. South Facade
7. Photo 211 of 309



ATLAS
ORNAMENTAL IRON WORKS
1000 GARDNER AVENUE - HOUSTON
DORIS T. GARDNER, M.P. - OWNER
EUGENE & HOWARD, JR. - MGRS.

1. West Tampa Historic District
2. 2512-2514 North Howard Avenue,
Tampa (Hillsborough County), FL
3. Carl Shiver
4. 1982
5. Florida Division of Archives,
History and Records Management
6. East Facades
7. Photo

212 / 309

• COIN LAUNDRY •

K AND M GROCERY



1. West Tampa Historic District
2. 2202-04 North Albany Avenue
(Hillsborough County), FL
3. Robin Krawitz
4. 1983
5. Florida Division of Archives,
History and Records Management
6. East Facade
7. Photo 213 of 309



1. Bustillo Bros. Cigar Factory, West
Tampa Historic District
2. 2111 North Albany Avenue, Tampa
(Hillsborough County), FL
3. Carl Shiver
4. 1982
5. Florida Division of Archives,
History and Records Management
6. North Elevation and West Facade
7. Photo

214 / 309



HILLSBORO
BOX
COMPANY

1. Pendas and Alvarez Cigar Factory, West Tampa Historic District
2. 2302 North Albany Avenue, Tampa (Hillsborough County), Fl
3. Carl Shiver
4. 1982
5. Florida Division of Archives, History and Records Management
6. West Facade and South Elevation
7. Photo

215/309



1. West Tampa Historic District
2. 2402 North Albany Avenue
(Hillsborough County), FL
3. Robin Krawitz
4. 1983
5. Florida Division of Archives,
History and Records Management
6. East Facade
7. Photo 214 of 309



1. West Tampa Historic District
2. 2511 Albany Avenue
(Hillsborough County), FL
3. Robin Krawitz
4. 1983
5. Florida Division of Archives,
History and Records Management
6. West Facade
7. Page 217 of 309



1. West Tampa Historic District
2. 2602 N. Albany Avenue
(Hillsborough County), FL
3. Robin Krawitz
4. 1983
5. Florida Division of Archives,
History and Records Management
6. East Facade
7. Page 218 of 309



1. West Tampa Historic District
2. 2607 N. Albany
(Hillsborough County), FL
3. Robin Krawitz
4. 1983
5. Florida Division of Archives,
History and Records Management
6. West Facade
7. Page 219 of 309



1. West Tampa Historic District
2. 1932 St. John Street
(Hillsborough County), FL
3. Robin Krawitz
4. 1983
5. Florida Division of Archives,
History and Records Management
6. North Facade
7. Page *20* of *309*

(813) 251-8690
Medical & Food Brokers

(813) 251-8690
Medical & Food Brokers



1. West Tampa Historic District
2. 2128 W. St. John Street
(Hillsborough County), FL
3. Robin Krawitz
4. 1983
5. Florida Division of Archives,
History and Records Management
6. West and South Elevations
7. Photo 221 of 309



1. West Tampa Historic District
2. 2139 W. St. John Street
(Hillsborough County), FL
3. Robin Krawitz
4. 1983
5. Florida Division of Archives,
History and Records Management
6. South Facade
7. Photo 222 of 309



1. West Tampa Historic District
2. 2335 St. John
(Hillsborough County), FL
3. Robin Krawitz
4. 1983
5. Florida Division of Archives,
History and Records Management
6. South Facade
7. Page 223 of 309



1. West Tampa Historic District
2. 2320 W. St. John Street
(Hillsborough County), FL
3. Robin Krawitz
4. 1983
5. Florida Division of Archives,
History and Records Management
6. North Facade
7. Photo 224 of 309



1. West Tampa Historic District
2. 2524 W. St. Johns Street
(Hillsborough County), FL
3. Robin Krawitz
4. 1983
5. Florida Division of Archives,
History and Records Management
6. North Facade
7. Photo 225 of 309



1. West Tampa Historic District
2. 2606 W. St. John Street
(Hillsborough County), FL
3. Robin Krawitz
4. 1983
5. Florida Division of Archives,
History and Records Management
6. North Facade
7. Photo 226 of 309



1. West Tampa Historic District
2. 2721 St. John Street
(Hillsborough County), FL
3. Robin Krawitz
4. 1983
5. Florida Division of Archives,
History and Records Management
6. South Facade
7. Page 227 of 309



1. West Tampa Historic District
2. 1902 St. Louis Street
(Hillsborough County), FL
3. Robin Krawitz
4. 1983
5. Florida Division of Archives,
History and Records Management
6. North Facade
7. Page 228 of 309



1. West Tampa Historic District
2. 1919 St. Louis Street
(Hillsborough County), FL
3. Robin Krawitz
4. 1983
5. Florida Division of Archives,
History and Records Management
6. South Facade
7. Page 229 of 309



1. West Tampa Historic District
2. 2107 St. Louis Street
(Hillsborough County), FL
3. Robin Krawitz
4. 1983
5. Florida Division of Archives,
History and Records Management
6. South Facade
7. Page 220 of 309



1. West Tampa Historic District
2. 2112 St. Louis Street
(Hillsborough County), FL
3. Robin Krawitz
4. 1983
5. Florida Division of Archives,
History and Records Management
6. North Facade
7. Page 231 of 309



1. West Tampa Historic District
2. 2306 St. Louis Street
(Hillsborough County), FL
3. Robin Krawitz
4. 1983
5. Florida Division of Archives,
History and Records Management
6. North Facade
7. Page *232* of *309*



2710

1. West Tampa Historic District
2. 2710 St. Louis Street
(Hillsborough County), FL
3. Robin Krawitz
4. 1983
5. Florida Division of Archives,
History and Records Management
6. North Facade
7. Page ~~233~~ of 309



1. West Tampa Historic District
2. 1906 St. Joseph Street
(Hillsborough County), FL
3. Robin Krawitz
4. 1983
5. Florida Division of Archives,
History and Records Management
6. North Facade
7. Photo *234* of *309*



1. West Tampa Historic District
2. 1923 St. Joseph Street
(Hillsborough County), FL
3. Robin Krawitz
4. 1983
5. Florida Division of Archives,
History and Records Management
6. South Facade
7. Photo 235 of 309



1. West Tampa Historic District
2. 2119 W. St. Joseph Street
(Hillsborough County), FL
3. Robin Krawitz
4. 1983
5. Florida Division of Archives,
History and Records Management
6. South Facade
7. Photo 236 of 309



1. West Tampa Historic District
2. 2130 St. Joseph Street
(Hillsborough County), FL
3. Robin Krawitz
4. 1983
5. Florida Division of Archives,
History and Records Management
6. North Facade
7. Photo 237 of 309



1. West Tampa Historic District
2. 2306 St. Joseph Street
(Hillsborough County), FL
3. Robin Krawitz
4. 1983
5. Florida Division of Archives,
History and Records Management
6. North Facade
7. Photo 238 of 309



1. West Tampa Historic District
2. 2513 St. Joseph Street
(Hillsborough County), FL
3. Robin Krawitz
4. 1983
5. Florida Division of Archives,
History and Records Management
6. South Facade
7. Photo 239 of 309



1. West Tampa Historic District
2. 2608 St. Joseph Street
(Hillsborough County), FL
3. Robin Krawitz
4. 1983
5. Florida Division of Archives,
History and Records Management
6. North Facade
7. Photo 240 of 309



1. West Tampa Historic District
2. 2617 St. Joseph Street
(Hillsborough County), FL
3. Robin Krawitz
4. 1983
5. Florida Division of Archives,
History and Records Management
6. South Facade
7. Photo 241 of 309



1. West Tampa Historic District
2. 2701 St. Joseph Street
(Hillsborough County), FL
3. Robin Krawitz
4. 1983
5. Florida Division of Archives,
History and Records Management
6. South Facade
7. Photo **242** of **309**



1. West Tampa Historic District
2. Tampania Avenue & Walnut Street
(Hillsborough County), FL
3. Robin Krawitz
4. 1983
5. Florida Division of Archives,
History and Records Management
6. Looking Northward
7. Photo 298 of 309



1. West Tampa Historic District
2. West Pine Street, Tampa (Hillsborough County), FL
3. Carl Shiver
4. 1982
5. Florida Division of Archives, History and Records Management
6. West Pine Street Looking West Toward North Howard Avenue
7. Photo 299/309

Cherry

W



1. West Tampa Historic District
2. North Howard Avenue, Tampa,
(Hillsborough County), FL
3. Carl Shiver
4. 1982
5. Florida Division of Archives, History
and Records Management
6. North Armenia Avenue at Intersection
of West Cherry Street Looking
South Toward I-275
7. Photo 300/309



Practicality Don't
Cost More
and More in the End

FOR SALE

WILSON

ST. JAMES

For Sale

1. West Tampa Historic District
2. Intersection of Armenia and Cherry
(Hillsborough County), FL
3. Robin Krawitz
4. 1983
5. Florida Division of Archives,
History and Records Management
6. Looking Eastward
7. Photo 301 of 309



1. West Tampa Historic District
2. Intersection of Albany and Beach
(Hillsborough County), FL
3. Robin Krawitz
4. 1983
5. Florida Division of Archives,
History and Records Management
6. Looking Southward
7. Page 302 of 309



1. West Tampa Historic District
2. North Howard Avenue, Tampa
(Hillsborough County), FL
3. Carl Shiver
4. 1982
5. Florida Division of Archives
History and Records Management
6. North Howard Avenue at Inter-
section of West Beach Street
Looking South Toward I-275
7. Photo 303 / 309



1. West Tampa Historic District
2. Intersection of Tampania and Beach
(Hillsborough County), FL
3. Robin Krawitz
4. 1983
5. Florida Division of Archives,
History and Records Management
6. Looking Eastward
7. Page 304 of 309



1. West Tampa Historic District
2. Intersection of Armenia and St. Conrad
(Hillsborough County), FL
3. Robin Krawitz
4. 1983
5. Florida Division of Archives,
History and Records Management
6. Looking Southward
7. Page 305 of 309



N Howard

1. West Tampa Historic District
2. Intersection of Howard and St. John
(Hillsborough County), FL
3. Robin Krawitz
4. 1983
5. Florida Division of Archives,
History and Records Management
6. Looking Westward
7. Page ~~306~~ of ~~309~~



1. West Tampa Historic District
2. Intersection of Habana and Columbus
(Hillsborough County), FL
3. Robin Krawitz
4. 1983
5. Florida Division of Archives,
History and Records Management
6. Looking Northward
7. Page 307 of



1. West Tampa Historic District
2. Intersection of Tampania and Kathleen
(Hillsborough County), FL
3. Robin Krawitz
4. 1983
5. Florida Division of Archives,
History and Records Management
6. Looking Westward
7. Page 308 of 309



1. West Tampa Historic District
2. Intersection of Albany and Columbus
(Hillsborough County), FL
3. Robin Krawitz
4. 1983
5. Florida Division of Archives,
History and Records Management
6. Looking Westward
7. Page 309 of 309