

**United States Department of the Interior
National Park Service**

**National Register of Historic Places
Continuation Sheet**

Section number _____ Page _____

SUPPLEMENTARY LISTING RECORD

NRIS Reference Number: 97001299

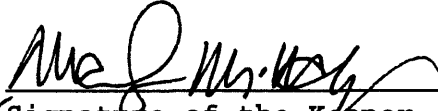
Date Listed: 11/17/97

Attala County Courthouse and
Confederate Monument
Property Name

Attala MISSISSIPPI
County State

N/A
Multiple Name

This property is listed in the National Register of Historic Places in accordance with the attached nomination documentation subject to the following exceptions, exclusions, or amendments, notwithstanding the National Park Service certification included in the nomination documentation.

for 
Signature of the Keeper

11/28/97
Date of Action

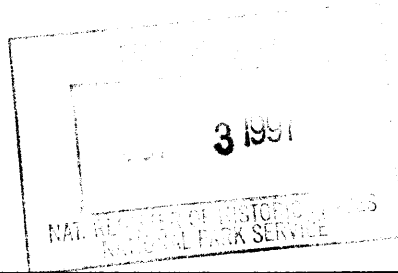
=====
Amended Items in Nomination:

Section No. 5: This nomination is amended to show that the category of property is Building(s).

Section No. 8: The area of significance for the Confederate Monument is changed from Art to Social History. This corresponds to the significance claimed in the narrative.

These changes have been confirmed with the Mississippi SHPO.

DISTRIBUTION:
National Register property file
Nominating Authority (without nomination attachment)



1299

**NATIONAL REGISTER OF HISTORIC PLACES
REGISTRATION FORM**

1. Name of Property

historic name: Attala County Courthouse and Confederate Monument
other names/site number:

2. Location

street & number: 230 West Washington Street not for publication n/a
city or town: Kosciusko vicinity n/a
state: Mississippi code MS county Attala code 7 zip code 39090

3. State/Federal Agency Certification

As the designated authority under the National Historic Preservation Act of 1986, as amended, I hereby certify that this X nomination request for determination of eligibility meets the documentation standards for registering properties in the National Register of Historic Places and meets the procedural and professional requirements set forth in 36 CFR Part 60. In my opinion, the property X meets does not meet the National Register Criteria. I recommend that this property be considered significant nationally statewide X locally. (See continuation sheet for additional comments.)

Kenneth H. P. Paul SEPT. 29, 1997
Signature of certifying official Date

Deputy State Historic Preservation Officer
State or Federal agency and bureau

In my opinion, the property meets does not meet the National Register criteria. (See continuation sheet for additional comments.)

Signature of commenting or other official Date

State or Federal agency and bureau

4. National Park Service Certification

I, hereby certify that this property is:
X entered in the National Register,
 See continuation sheet.
 determined eligible for the
National Register
 See continuation sheet.
 determined not eligible for the
National Register
 removed from the National Register
 other (explain): _____

for Signature of the Keeper Date of Action
Mary M. [Signature] 11/17/97

5. Classification

Ownership of Property:

PUBLIC/local

Number of Resources within Property:

(Do not include previously listed resources in the count)

Category of Property:

Building(s)

Object

Contributing

1

Noncontributing

buildings

sites

structures

1

5

objects

2

5

Total

Name of related multiple property listing

(Enter "N/A" if property is not part of a multiple property listing.)

N/A

Number of contributing resources previously listed**in the National Register: 0**

6. Function or Use

Historic Functions:

GOVERNMENT/courthouse

RECREATION & CULTURE/monument

Current Functions:

GOVERNMENT/courthouse

RECREATION & CULTURE/monument

7. Description

Architectural Classification(s):

Late 19th & 20th Century Revivals: Classical Revival

Materials:

foundation: brick, concrete

roof: asphalt

walls: brick

other tin, poured concrete, granite

Narrative Description:

See Continuation Sheets

8. Statement of Significance

Applicable National Register Criteria

- A** Property is associated with events that have made a significant contribution to the broad patterns of our history.
- B** Property is associated with the lives of persons significant in our past.
- C** Property embodies the distinctive characteristics of a type, period, or method of construction or represents the work of a master, or possesses high artistic values, or represents a significant and distinguishable entity whose components lack individual distinction.
- D** Property has yielded, or is likely to yield information important in prehistory or history.

Areas of Significance

Architecture
Politics/Government
Art

Period of Significance
1897-1947

Significant Dates
1897, 1911

Criteria Considerations:

Property is:

- A** owned by a religious institution or used for religious purposes.
- B** removed from its original location.
- C** a birthplace or a grave.
- D** a cemetery.
- E** a reconstructed building, object, or structure.
- F** a commemorative property.
- G** less than 50 years of age or achieved significance within the past 50 years.

Significant Person(s)
N/A

Cultural Affiliation(s)
N/A

Architect/Builder
Andrew J. Bryan/
Lindamood & Puckett,

Contractors

Narrative Statement of Significance: See continuation sheets.

9. Major Bibliographical References

Bibliography See continuation sheet.

Previous documentation on file (NPS)

- preliminary determination of individual listing (36 CFR 67) has been requested.
- previously listed in the National Register
- previously determined eligible by the National Register
- designated a National Historic Landmark
- recorded by Historic American Buildings Survey

- recorded by Historic American Engineering Record

Primary Location of Additional Data

- State Historic Preservation Office
- Other State agency
- Federal agency
- Local government
- University
- Other
- Name of repository:

MS Dept. of Archives & History

10. Geographical Data

Acreage of Property: less than 1 acre

UTM References:	Zone	Easting	Northing	Zone	Easting	Northing
A	16	258180	3660550	C		
B				D		

___ See continuation sheet.

Verbal Boundary Description See continuation sheet.

Boundary Justification: See continuation sheet.

11. Form Prepared By

name/title: Deborah G. Wise; Architectural Historian Intern

organization: Mississippi Department of Archives & History

street & number: Post Office Box 571

city or town: Jackson

state: Mississippi

date:

telephone: (601)359-6940

zip code: 39201

Additional Documentation

Submit the following items with the completed form:

Continuation Sheets

Maps

A USGS map (7.5 or 15 minute series) indicating the property's location.

A sketch map for historic districts and properties having large acreage or numerous resources.

Photographs

Representative black and white photographs of the property.

Additional items (Check with the SHPO or FPO for any additional items)

Property Owner(s)

name: Attala County Board of Supervisors

street & number: 230 W. Washington St.

city or town: Kosciusko

state: MS

telephone: (601)289-2921

zip code: 39090

Paperwork Reduction Act Statement: This information is being collected for applications to the National Register of Historic Places to nominate properties for listing or determine eligibility for listing, to list properties, and to amend existing listings. Response to this request is required to obtain a benefit in accordance with the National Historic Preservation Act, as amended (16 U.S.C. 470 et seq.).

Estimated Burden Statement: Public reporting burden for this form is estimated to average 18.1 hours per response including the time for reviewing instructions, gathering and maintaining data, and completing and reviewing the form. Direct comments regarding this burden estimate or any aspect of this form to the Chief, Administrative Services Division, National Park Service, P.O. Box 37127, Washington, DC 20013-7127; and the Office of Management and Budget, Paperwork Reductions Project (1024-0018), Washington, DC 20503.

**United States Department of the Interior
National Park Service**

**NATIONAL REGISTER OF HISTORIC PLACES
CONTINUATION SHEET**

Section: 7

Page: 1

Attala County Courthouse
Attala County, MS

Narrative Description

The Attala County Courthouse, located on the courthouse square in Kosciusko, Mississippi, is a Classical Revival style public building significant under Criterion A for its contributions as a county courthouse for one hundred years and Criterion C as an excellent example of Late 19th Century architecture in the Classical Revival style.

The Attala County Courthouse is a brick, two story Classical Revival style building in a Greek cross plan, with porticos projecting from the north and south. The building has a central block topped by a hipped roof and resting on a brick foundation. On either side of the central block are two-story two-bay wings of slightly smaller proportion. The wings are topped with a flat roof. The entire building is trimmed with a concrete water table.

The most dominant features of the Attala County Courthouse are the projecting tetrastyle porticos on its north and south elevations. The columns were once fitted with stamped metal, Corinthian capitals. These have been removed. However, all of the other pressed metal decorations remain, including the fluted columns; bases; and the decorative details of the entablature, with its dentils and modillions in the cornice. Two brick pilasters stand directly behind the outside columns. The approach to the portico is constructed of sandstone steps and a marble floor.

The south facade's projecting block is a five bays wide by one bay deep with the two-bay wings on either side. The entrance is a double one-light-and-panel door centrally located with a one-light transom. The entrance is topped with pressed metal lintel fashioned to look like brackets supporting a pediment. The four windows on the first floor are single one-over-one double-hung sash, while the five windows on the second story are paired one-over-one double-hung sash with a paired transom above. All windows have concrete sills, and are topped with a pressed metal lintel resembling brackets and hood-molds. The recessed wings on the south elevation have two single one-over-one double-hung sash windows on both the first and second floors. The first floor windows on the easternmost bay have been enclosed.

The end wall of the east wing is characterized by five bays, created by the placement of four pilasters. There is also a decorative cornice below an articulated brick parapet surrounding the top of the wing. Above each of the pilasters, there is a projection of the cornice. The three central bays are filled by the one-over-one double-hung sash windows. The double one-light-and-panel door is located centrally with a

**United States Department of the Interior
National Park Service**

**NATIONAL REGISTER OF HISTORIC PLACES
CONTINUATION SHEET**

Section: 7

Page: 2

Attala County Courthouse
Attala County, MS

Narrative Description (continued)

pressed metal lintel also made to look like a pediment supported by brackets. The one-light transom has been enclosed. Four of the windows on this side have metal awnings placed over them, but the majority of the windows are original. There is an entrenched sidewalk, cut into the grounds, that leads to a service entrance in the basement.

The north elevation is identical to the south facade; however it is currently under restoration. There is also a cornerstone on the west side of the central block. It reads, "ATTALA CO. COURTHOUSE / ERECTED 1897 / BOARD OF SUPERVISORS / P.T. STEPHENS, PRESIDENT, / J.A. MAULDIN / Z.R. BRISTER / R.C. STINLEY / W.S. GILLILAND / ANDREW J. BRYAN & CO. ARCHITECTS / LINDAMOOD & PUCKETT, CONTRACTORS".

The end of the west wing is similar to the east wing. However, it lacks a sidewalk that leads to the basement. Instead, it has a ramp leading to a small service door, that might have been used for coal. This side also has five bays, divided by four pilasters, with the three central bays filled by one-over-one double-hung sash windows and a central, double one-light-and-panel door. The door transom has been enclosed. The second floor windows have a one-light transom. Three of these windows have metal awnings over them.

Another impressive detail about the Attala County Courthouse is the Classical cupola resting at the peak of the roof. The base of the cupola is a square, with two fluted pilasters topped by Ionic capitals supporting a frieze and pediment on each side. Dentils and carved details decorate the frieze and pediments. There is also a clock face on each side of the base. Above the clock is a drum with circular louvered ventilators and carved details between. The cupola is topped with a copper dome and decorative weathervane.

The interior of the Attala County Courthouse has been well preserved. The entrances from the north, south, east and west lead into corridors. These corridors radiate from a central circular space, with stairwells in the east and west corridors. There are two rooms placed symmetrically on either side of the corridors running north and south, as well as two rooms in each of the east and west wings.

**United States Department of the Interior
National Park Service**

**NATIONAL REGISTER OF HISTORIC PLACES
CONTINUATION SHEET**

Section: 7

Page: 3

Attala County Courthouse
Attala County, MS

Narrative Description (continued)

While there is a new dropped ceiling throughout, the beadboard wainscoting is still intact. The first story has marble floors. The door frames are original, many with the transoms still intact. Some of the original five-panel doors also remain.

The second story has been altered much more. There is a corridor around the perimeter of this floor, as well as one down the center. The courtroom is located on this floor. While the courtroom retains its historic composition, many of its decorative features have been removed and replaced with waist-high paneling, probably in the late 1970's or early 1980's.

The small third story is located over the courtroom.

Also located on the Courthouse Square are six monuments. The only one of these that is contributing is the Confederate Monument, located on the northeast corner of the square. The monument was erected by the United Daughters of the Confederacy in 1911. The north side of this monument reads, "1861-1865 / ATTALA COUNTY'S / TRIBUTE TO THE / BOYS IN GREY / OUR HEROES". A Confederate flag is carved in the center. On the west it reads, "C.S.A. / TO THE SOUTHERN / SOLDIERS. / THOUGH YOUR RANKS / NOW FAST ARE FADING / AND THE STARS AND / BARS ARE FURLED, / YET THE SOUTH / WILL LIVE FOREVER / IN THE GLORY OF / YOUR WORLD." The south side reads, "1861-1865 / LORD GOD OF HOSTS / BE WITH US YET / LEST WE FORGET, / LEST WE FORGET / THE NOBLE WOMEN OF THE SOUTH, WHO, / WITH EYES UNDIMMED, BY EAR AND HEARTS / OF SPARTAN COURAGE / GAVE THE LOVED ONES / TO OUR COUNTRY, TO / CONQUER OR TO DIE, / FOR TRUTH AND RIGHT, / AND WHO ENSHRINED / THEIR DEEDS IN / DEATHLESS LOVE / TO KEEP VIGIL O'ER / SACRED GRAVES." While, the east side has a listing of the Attala County companies who served. The base of the east side reads, "ERECTED BY / KOSCIUSKO CHAPTER U.D.C. 634". The monument is topped with a Confederate soldier in uniform, facing north, standing at rest. The monument was recorded by the Save Outdoor Sculpture project in 1994.

The other monuments include four ceramic beehives, one on each corner of the grounds (NC). These were placed on the square in 1993 to capitalize on the logo of the local newspaper, "Kosciusko-the Beehive of the Hills". Located on the southwest corner of the square, facing southeast, is a circa 1980 monument to the armed forces. It is a rectangular granite monument with a flag pole next to it (NC).

**United States Department of the Interior
National Park Service**

**NATIONAL REGISTER OF HISTORIC PLACES
CONTINUATION SHEET**

Section: 8

Page: 4

Attala County Courthouse
Attala County, MS

Statement of Significance

The Attala County Courthouse in Kosciusko, Mississippi is a significant local representation of Classical Revival architecture. The Attala County Courthouse is being nominated under Criterion A for its contributions as a county Courthouse for one hundred years, and Criterion C as an excellent example of late nineteenth-early twentieth century civic architecture in the Classical Revival style. The Confederate Monument located on the square is being nominated under Criterion A for its local importance as a representation of a movement to memorialize the Confederacy; Criterion C for Art and is subject to Consideration F as a commemorative property.

The Classical Revival's monumental style was often used in civic buildings because it represented democracy. This is illustrated in the fact that the Attala County Courthouse is the most impressive building in Kosciusko and has been prominently placed in the center of town. This position allows the courthouse to be the heart of the town, with prime business locations surrounding it.

Attala County was founded in 1833. The location of the county seat was chosen for its abundant supply of spring water and its location on the Natchez Trace.¹ While this location has always been the same, there have been several name changes. Some of these include: Red Bud Springs, Greenville and Paris. The name Kosciusko was adopted in 1836, honoring the Polish patriot who fought in the American Revolution. The town is slightly north of the geographic center of the state.²

The original courthouse, erected in 1837, was a log building on the town square. When it burned in 1858, the seat of government was moved off the square to a building near the Methodist Church. This structure burned in 1860. The town then decided to build another courthouse on the town square. This building would survive the Civil War, but it was destroyed by fire in 1896. The present Attala County Courthouse was erected on the square in Kosciusko in 1897 at an estimated cost of \$20,000.³ Like the other buildings, it too overlooked the surrounding businesses of Kosciusko. The courthouse was designed by Andrew J. Bryan & Co. with Lindamood & Puckett as contractors for the construction.

¹ Attala County, WPA Records.

² Bill Gurney, Mississippi Courthouses: Then and Now, (Ripley, MS: Old Timer Press, 1987), pg. 8.

³ L.S. Sanders, Jr., "Present Home of Attala's Government," Star-Herald September 12, 1946.

**United States Department of the Interior
National Park Service**

**NATIONAL REGISTER OF HISTORIC PLACES
CONTINUATION SHEET**

Section: 8

Page: 5

Attala County Courthouse
Attala County, MS

Statement of Significance (continued)

For the last one hundred years, the courthouse has been the center for many town and county functions. These include a Fiddler's Contest held each year in the courtroom of the courthouse.⁴ This contest continues today in another location. Although renovations have occurred to the interior, the building retains a relatively high degree of historic integrity.

The Confederate Monument located on the grounds of the Attala County Courthouse is locally significant for its association with the Confederate Memorial movement. This social movement played an important part in developing the Southern regional identity from the 1870's until the First World War. Many of these monuments were placed on courthouse grounds, in parks and cemeteries. And while some were works of art, most were stock sculptures important only for their historical significance. The Confederate Monument on the grounds of the Attala County Courthouse is one of the more common types.

⁴ Attala County, WPA Records.

**United States Department of the Interior
National Park Service**

**NATIONAL REGISTER OF HISTORIC PLACES
CONTINUATION SHEET**

Section: 9 & 10

Page: 6

Attala County Courthouse
Attala County, MS

Major Bibliographical References

Attala County, Mississippi. WPA Records. Mississippi Department of Archives and History, Jackson.

Gurney, Bill. Mississippi Courthouses: Then and Now. Ripley, MS: Old Timer Press, 1987.

Sanders, L.S. "Present Home of Attala's Government." Star-Herald (Kosciusko, MS) September 12, 1946.

Geographical Data

Verbal Boundary Description

The Courthouse Square of Attala County sits on Parcel 1305212VC12 in the NW quarter of the Attala County Tax Assessor map 21147. It is a rectangular lot, measuring 230 x 227 feet.

Verbal Boundary Justification

The boundary includes the courthouse square and those properties that have been historically associated with the square and maintained their historic integrity.

**United States Department of the Interior
National Park Service**

**NATIONAL REGISTER OF HISTORIC PLACES
CONTINUATION SHEET**

Section: Photos

Page: 7

Attala County Courthouse
Attala County, MS

1. Attala County Courthouse
2. Kosciusko, Attala Co., MS
3. Deborah G. Wise
4. May 1997
5. Mississippi Department of Archives and History (MDAH)

Photo 1 South facade, view to north

Photo 2 South facade detail, entablature

Photo 3 East facade, view to west

Photo 4 West facade, view to east

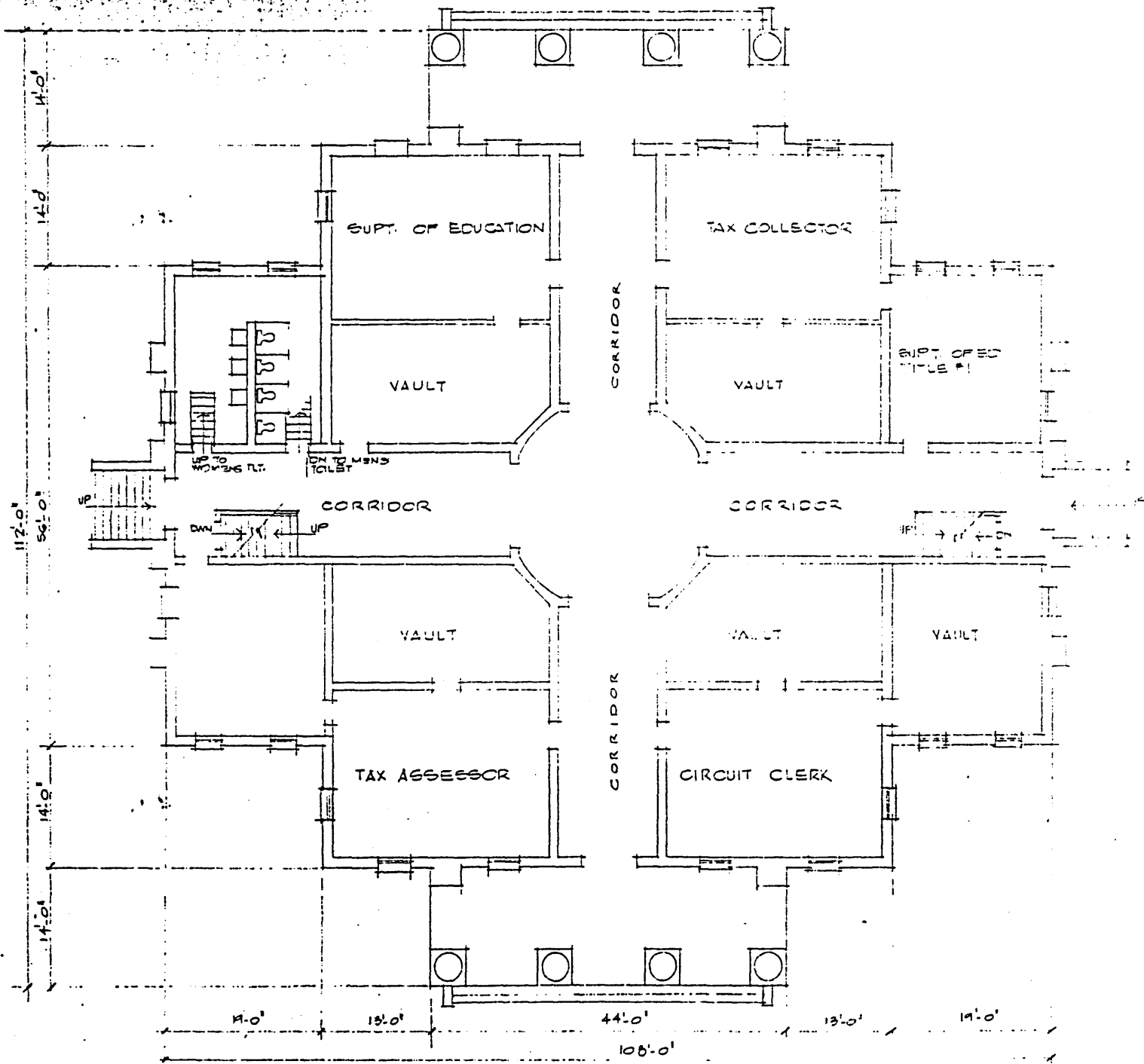
Photo 5 Cupola

Photo 6 Interior staircase

Photo 7 Interior

Photo 8 War Monument, c. 1980

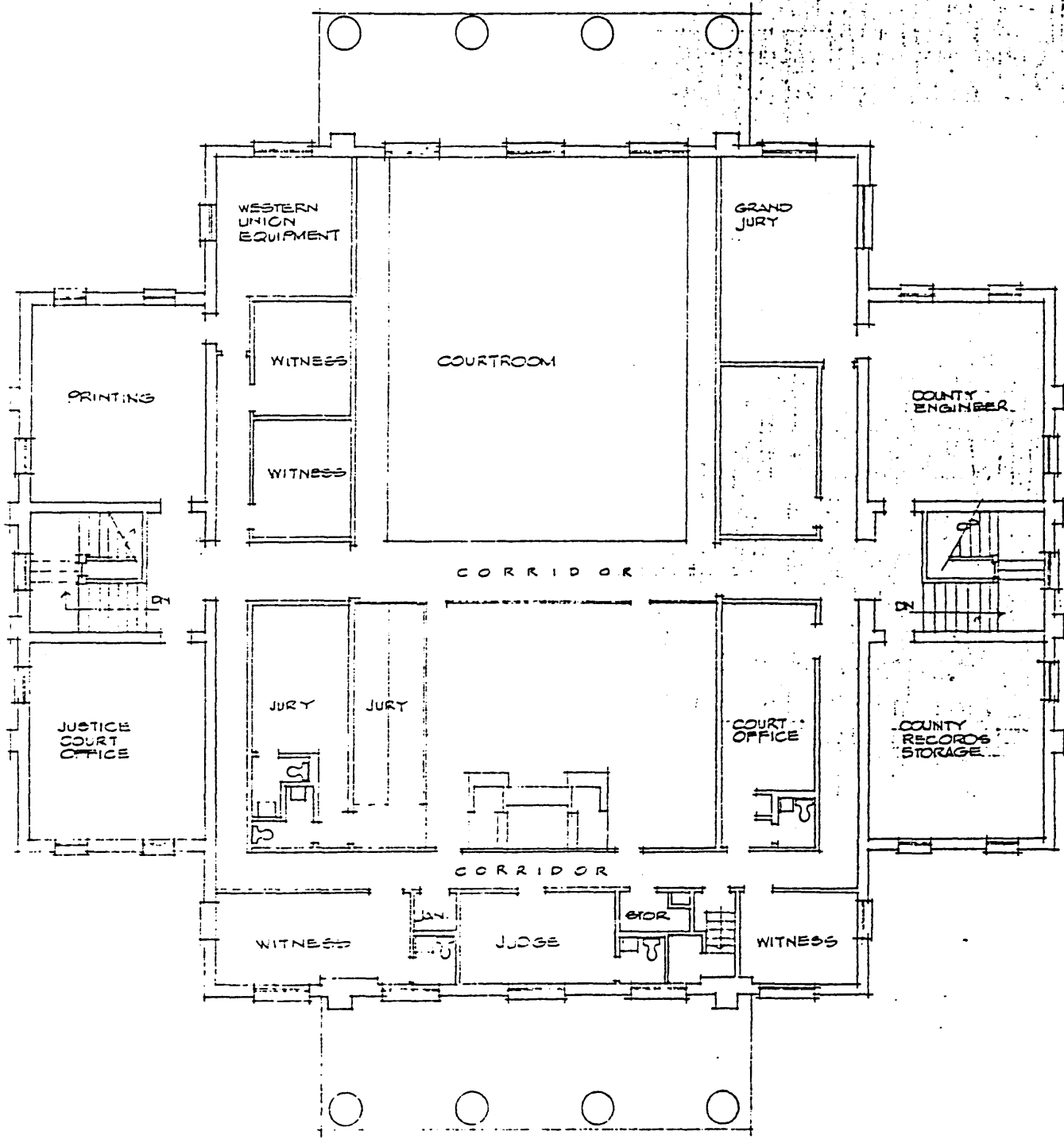
Photo 9 Confederate Monument, 1911



EXISTING FIRST FLOOR PLAN
 SCALE: 1" = 19' 0"



Attala County Courthouse
 Kosciusko, Attala Co., MS



EXISTING SECOND FLOOR PLAN
 SCALE: 1" = 19'0"

Attala County Courthouse
 Kosciusko, Attala Co., MS

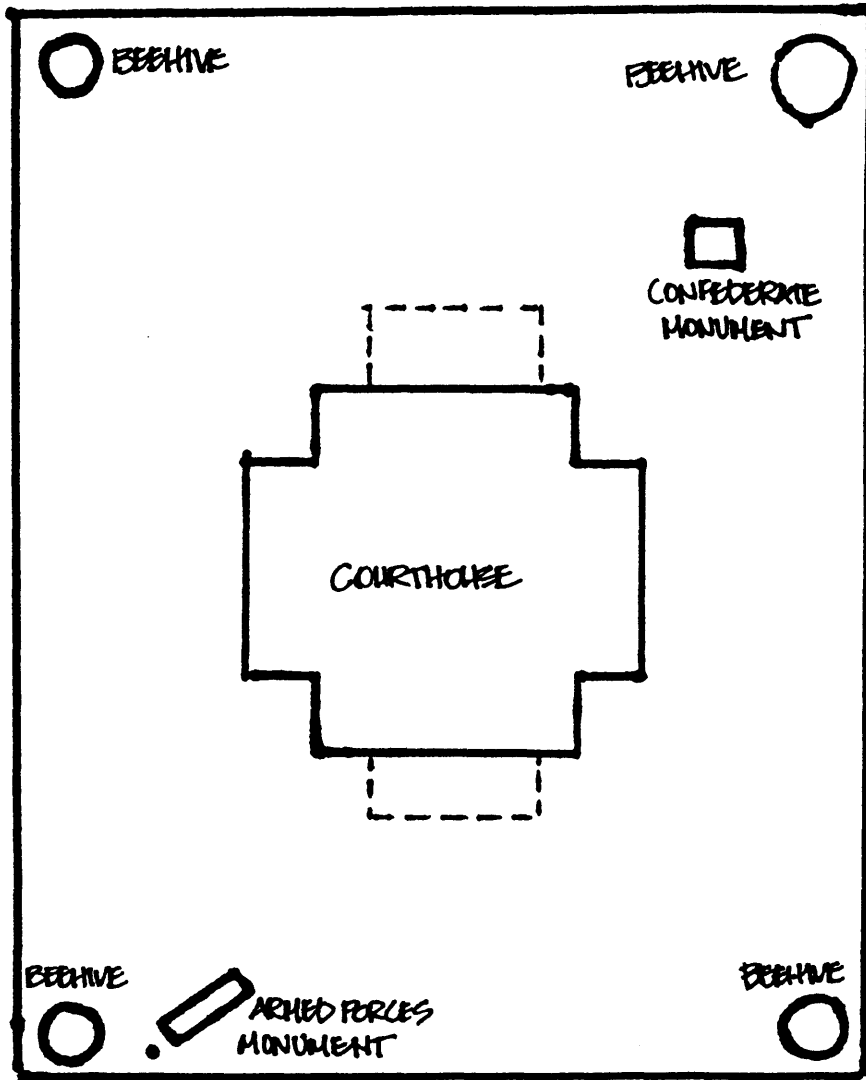
GODFREY, BARRETT,
 MAIBEL & TUMINELLO
 ARCHITECTS, LTD.
 JACKSON/VICKSBURG, MS.

G B M T

DATE	7/19/82
DESIGNED	AJK
DRAWN	LW
CHECKED	AJK

ELEVATOR & HANDICAP FACILITIES FOR
 ATTALA COUNTY COURTHOUSE
 KOSCIUSKO - MISSISSIPPI

226



Attala County Courthouse
Kosciusko, Attala Co., MS