



ST. JOHN CHURCH

EAGER & VALLEY STS. BALTIMORE CITY

PHOTO BY JEFFREY HONICK

JUNE 1980

FEB 8 1982

NEG. AT CHAP

VIEW FROM N.W. (EXTERIOR)

1/13

COMMISSION FOR HISTORICAL &
ARCHITECTURAL PRESERVATION

Baltimore, Md. 21202



ST JOHN CHURCH
EAGER & VALLEY STS. - BALTIMORE CITY
PHOTO BY JEFFREY HONICK
JUNE 1980

FEB 8 1982

NEG. AT CHAP

MAIN FACADE FROM N.W.
(EXTERIOR)

2/13

**COMMISSION FOR HISTORICAL &
ARCHITECTURAL PRESERVATION**

Baltimore, Md. 21202



CENTRAL NEIGHBORHOOD IMPROVEMENT ASSOC., CORP.

Building a better way for our Community

CENTRAL
NEIGHBORHOOD
GYMNASIUM

COMMISSION FOR HISTORICAL &
ARCHITECTURAL PRESERVATION

Baltimore, Md. 21202

ST. JOHN'S CHURCH
EAGER & VALLEY STS. - BALTIMORE CITY
PHOTO BY JEFFREY HONICK
FEB. 1980
NEG. AT CHAP
MAIN ENTRANCE
(EXTERIOR)

FEB 8 1982

3/13

CENTRAL NEIGHBORHOOD IMPROVEMENT ASSOC., CORP.
building a better way for our Community

10
CENTRAL
NEIGHBORHOOD
GYMNASIUM



ST. JOHN CHURCH

EAGER & VALLEY STS. - BALTIMORE CITY

PHOTO BY JEFFREY HONICK FEB 8 1982

JUNE 1980

NEG. AT CHAP →

COMMISSION FOR HISTORICAL &
ARCHITECTURAL PRESERVATION

MAIN ENTRANCE - NORTH FACADE
EXTERIOR

4/13



COMMISSION FOR HISTORICAL &
ARCHITECTURAL PRESERVATION

Baltimore, Md. 21202

ST JOHN CHURCH
EAGER & VALLEY STS. - BALTIMORE CITY
PHOTO BY JEFFREY HONICK

JUNE 1980

FEB 8 1982

NEG. AT CHAP

SIDE ENTRANCE - WEST SIDE OF WEST TOWER
(EXTERIOR)

5/13



ST. JOHN CHURCH

EAGER & VALLEY STS. - BALTIMORE CITY

PHOTO BY JEFFREY HONICK

JUNE 1980


NEG. AT CHAP

VIEW FROM S.W.

(EXTERIOR)

FEB 8 1982

6/13



**COMMISSION FOR HISTORICAL
ARCHITECTURAL PRESERVATION**

Baltimore, Md. 21202



ST. JOHN CHURCH

EAGER & VALLEY STS. - BALTIMORE CITY

PHOTO BY JEFFREY HONICK

JUNE 1980

NEG. AT CHAP

FEB 8 1982

REAR ADDITION OF 1882; VIEW FROM WEST
(EXTERIOR) 7/13

COMMISSION FOR HISTORICAL &
ARCHITECTURAL PRESERVATION

Baltimore, Md. 21202



ST JOHN CHURCH

EAGER & VALLEY STS. - BALTIMORE CITY

PHOTO BY JEFFREY HONICK

FEB. 1980

FEB 8 1982

NEG. AT CHAP

VIEW FROM ORGAN LOFT TOWARD APSE
(INTERIOR) 8/13

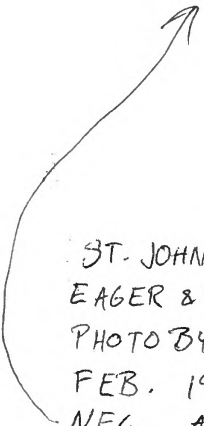
**COMMISSION FOR HISTORICAL &
ARCHITECTURAL PRESERVATION**

Baltimore, Md. 21202



COMMISSION FOR HISTORICAL &
ARCHITECTURAL PRESERVATION

Baltimore, Md. 21202



ST. JOHN'S CHURCH
EAGER & VALLEY STS. - BALTIMORE CITY
PHOTO BY JEFFREY HONICK
FEB. 1980
NEG. AT CHAP
VIEW FROM LOFT TOWARD APSE
(INTERIOR)

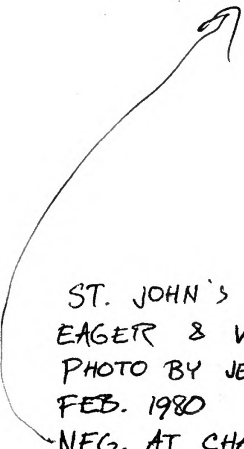
FEB 8 1982

9/13



COMMISSION FOR HISTORICAL
ARCHITECTURAL PRESERVATION

Baltimore, Md. 21202



ST. JOHN'S CHURCH
EAGER & VALLEY STS. - BALTIMORE CITY
PHOTO BY JEFFREY HONICK
FEB. 1980
FEB 8 1982
NEG. AT CHAP

INTERIOR VIEW FROM ALTAR AREA TOWARD
ORGAN LOFT (INTERIOR) 10/13



COMMISSION FOR HISTORICAL &
ARCHITECTURAL PRESERVATION

Baltimore, Md. 21202

ST. JOHN'S CHURCH

EAGER & VALLEY STS. - BALTIMORE CITY

PHOTO BY JEFFREY HONICK FEB 8 1982

FEB. 1980

NEG. AT CHAP

COMMISSION FOR HISTORICAL &
ARCHITECTURAL PRESERVATION

ORGAN LOFT (INTERIOR) 11/13



COMMISSION FOR HISTORICAL &
ARCHITECTURAL PRESERVATION

Baltimore, Md. 21202

ST. JOHN'S CHURCH

EAGER and VALLEY STS. - BALTIMORE CITY

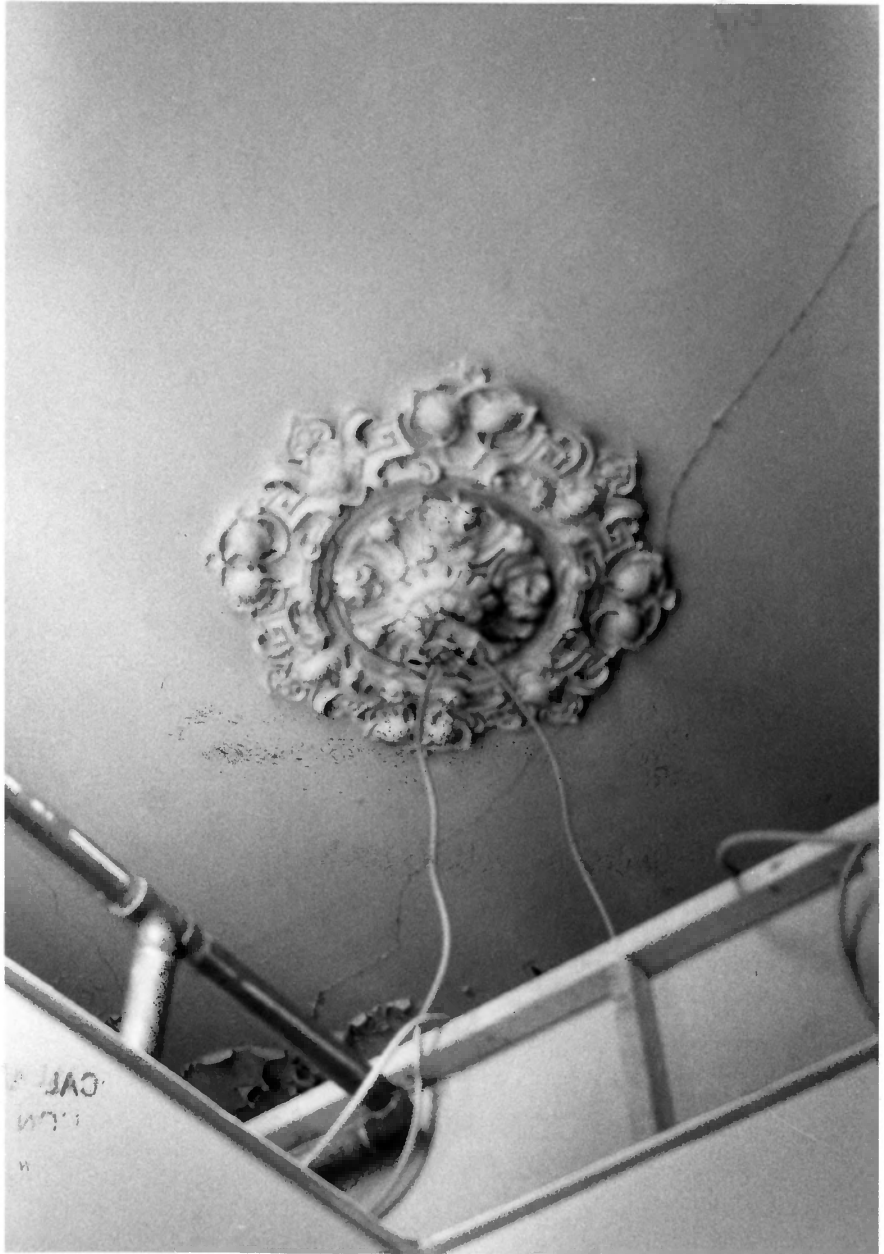
PHOTO BY JEFFREY HONICK FEB 8 1982

FEB. 1980

COMMISSION FOR HISTORICAL &

NEG. AT CHAP ARCHITECTURAL

TYPICAL CAST IRON COLUMN ~~PH~~ 12/13
(INTERIOR)



CAV
1.00
M

ST. JOHN'S CHURCH
EAGER & VALLEY STS. - BALTIMORE CITY
PHOTO BY JEFFREY HONICK
FEB 1980

FEB 8 1982

NEG. AT CHAP
LIGHT FIXTURE ROSETTE IN CEILING OF ROOM
IN 1882 ADDITION (INTERIOR) 13/13

COMMISSION FOR HISTORICAL &
ARCHITECTURAL PRESERVATION

Baltimore, Md. 21202