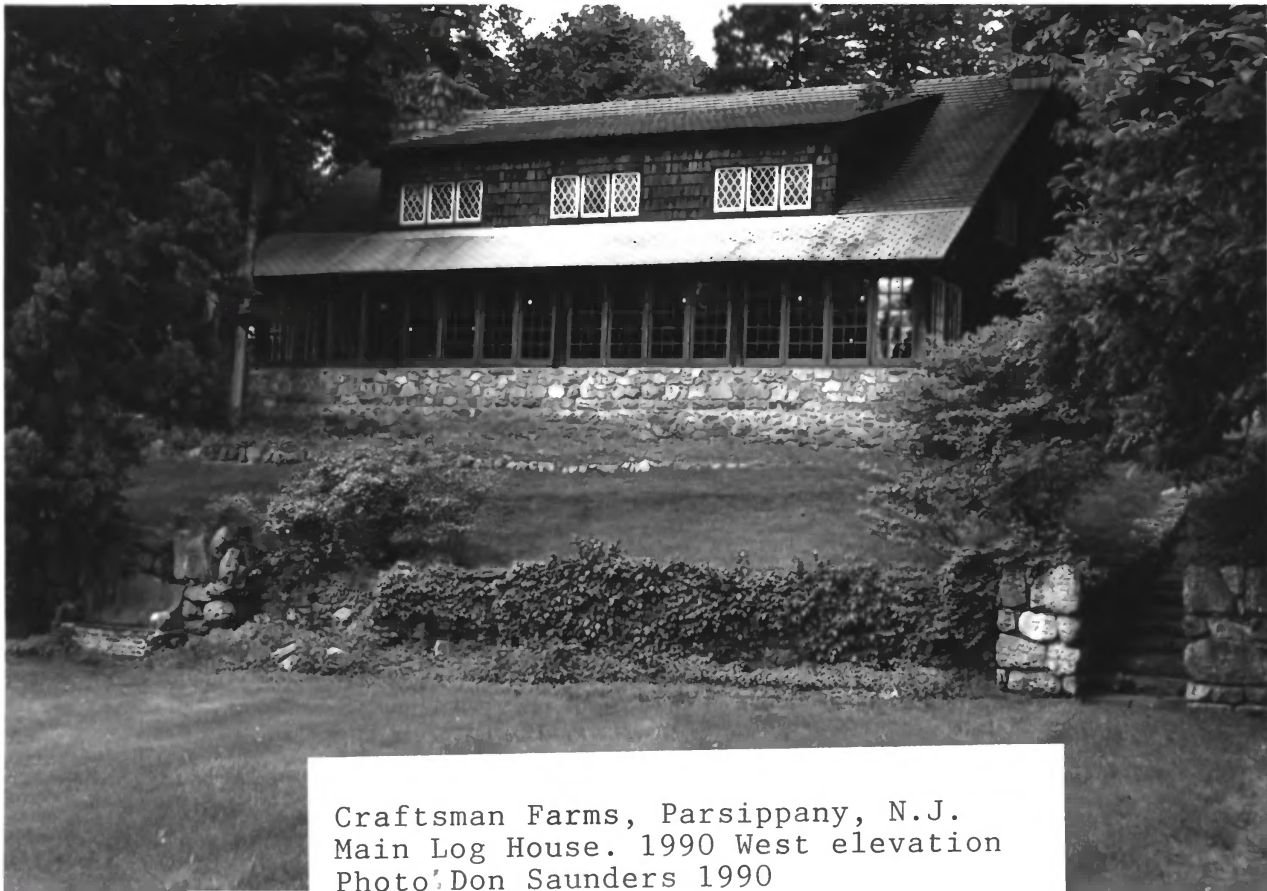
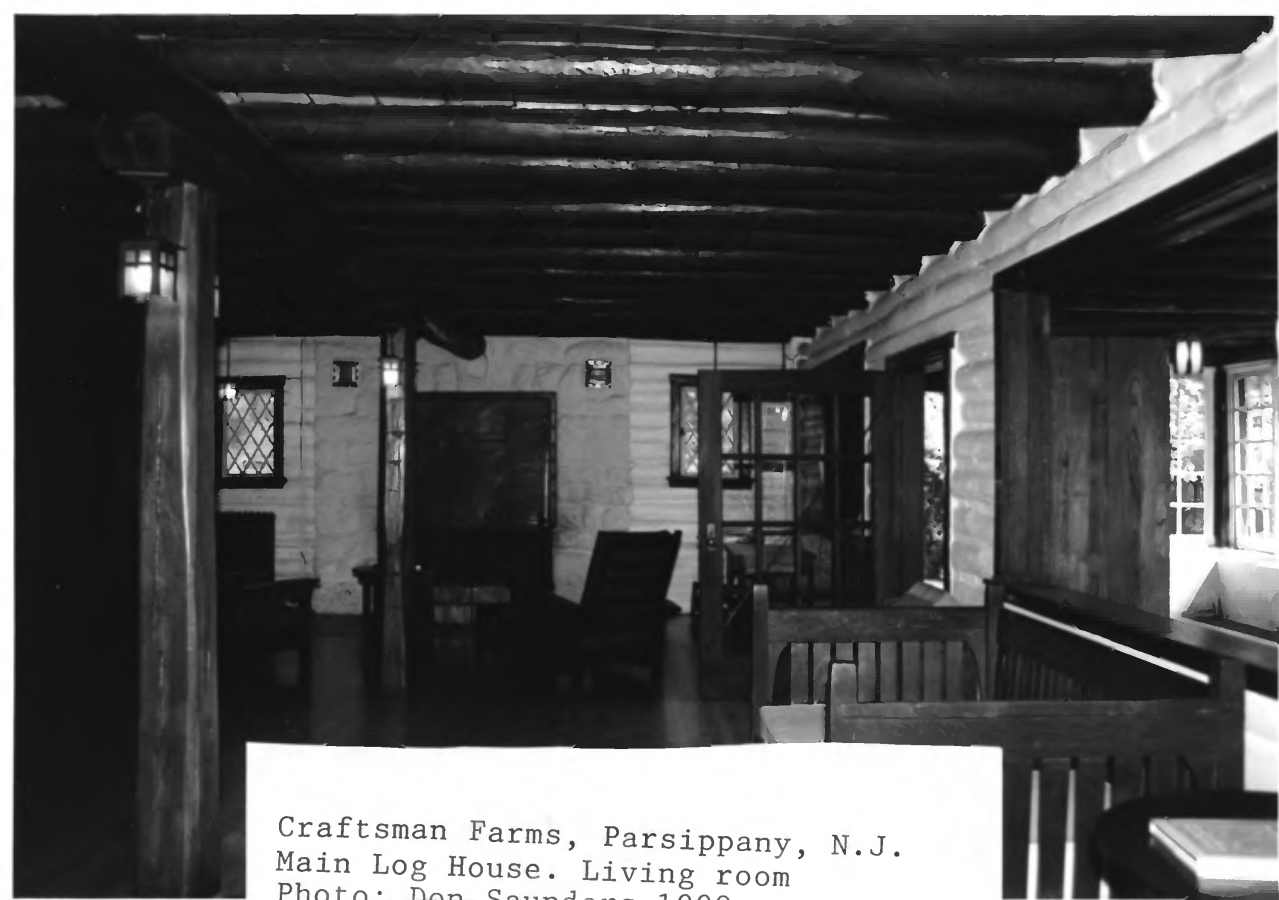


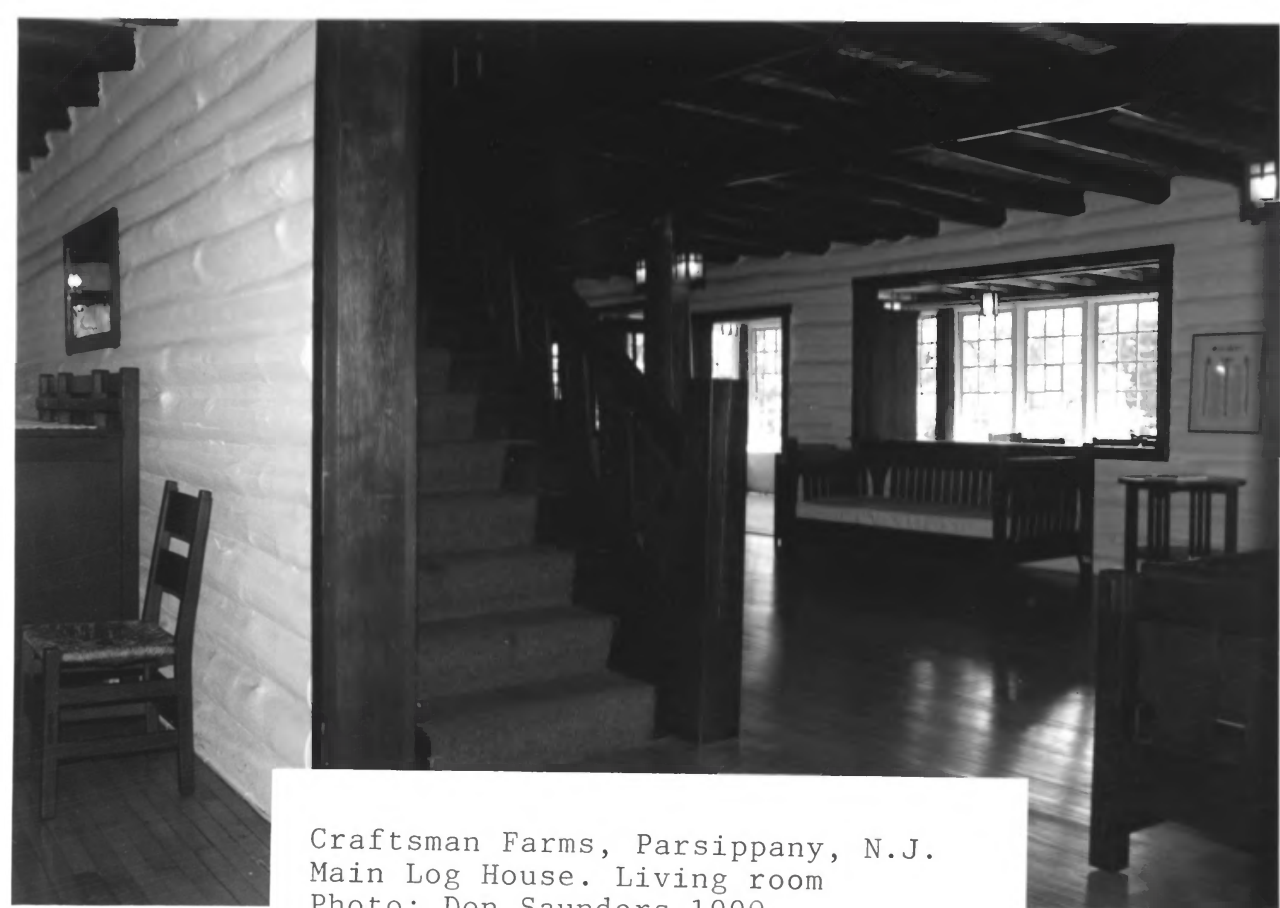
Craftsman **Farms**, Parsippany, N.J.
Main Log House. East elevation
Photo: Don Saunders 1990



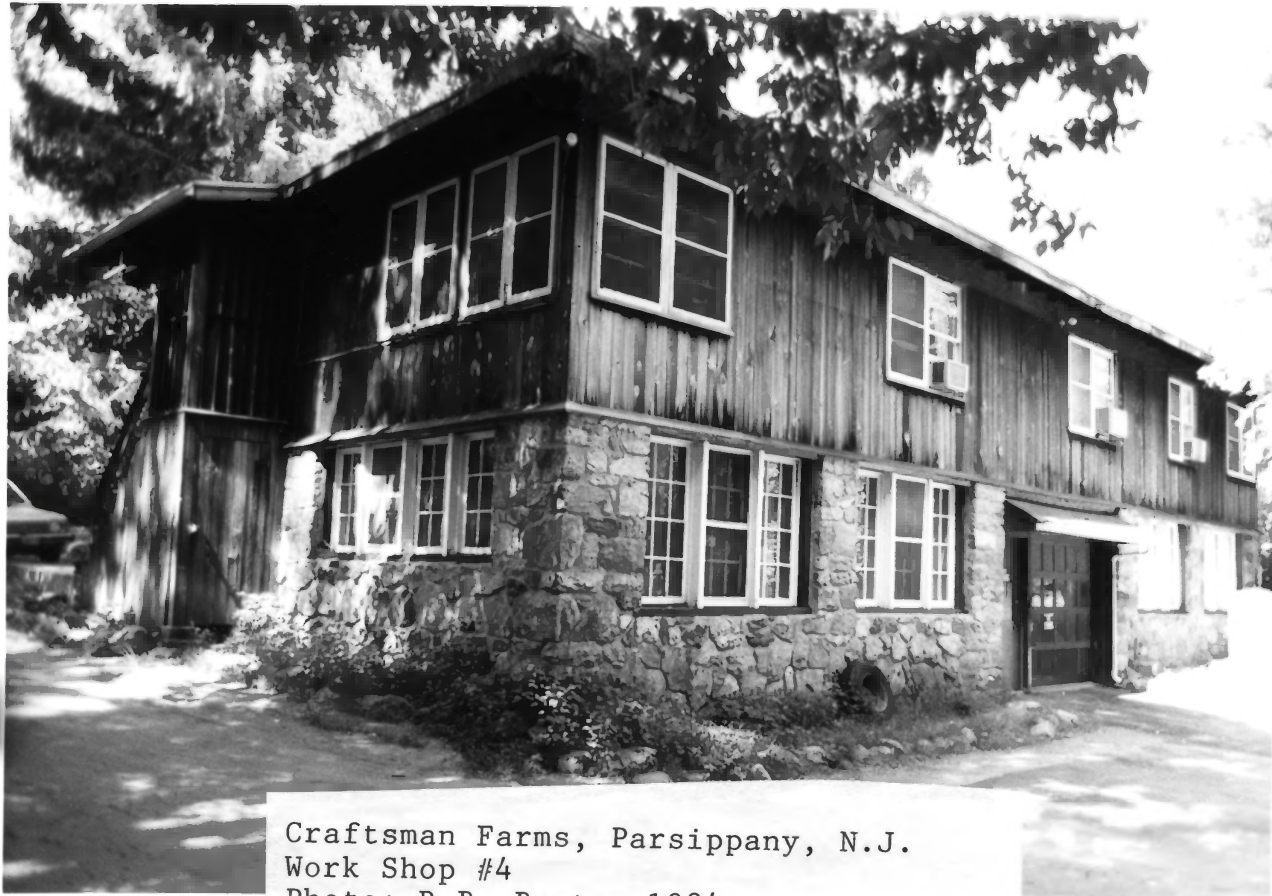
Craftsman Farms, Parsippany, N.J.
Main Log House. 1990 West elevation
Photo: Don Saunders 1990



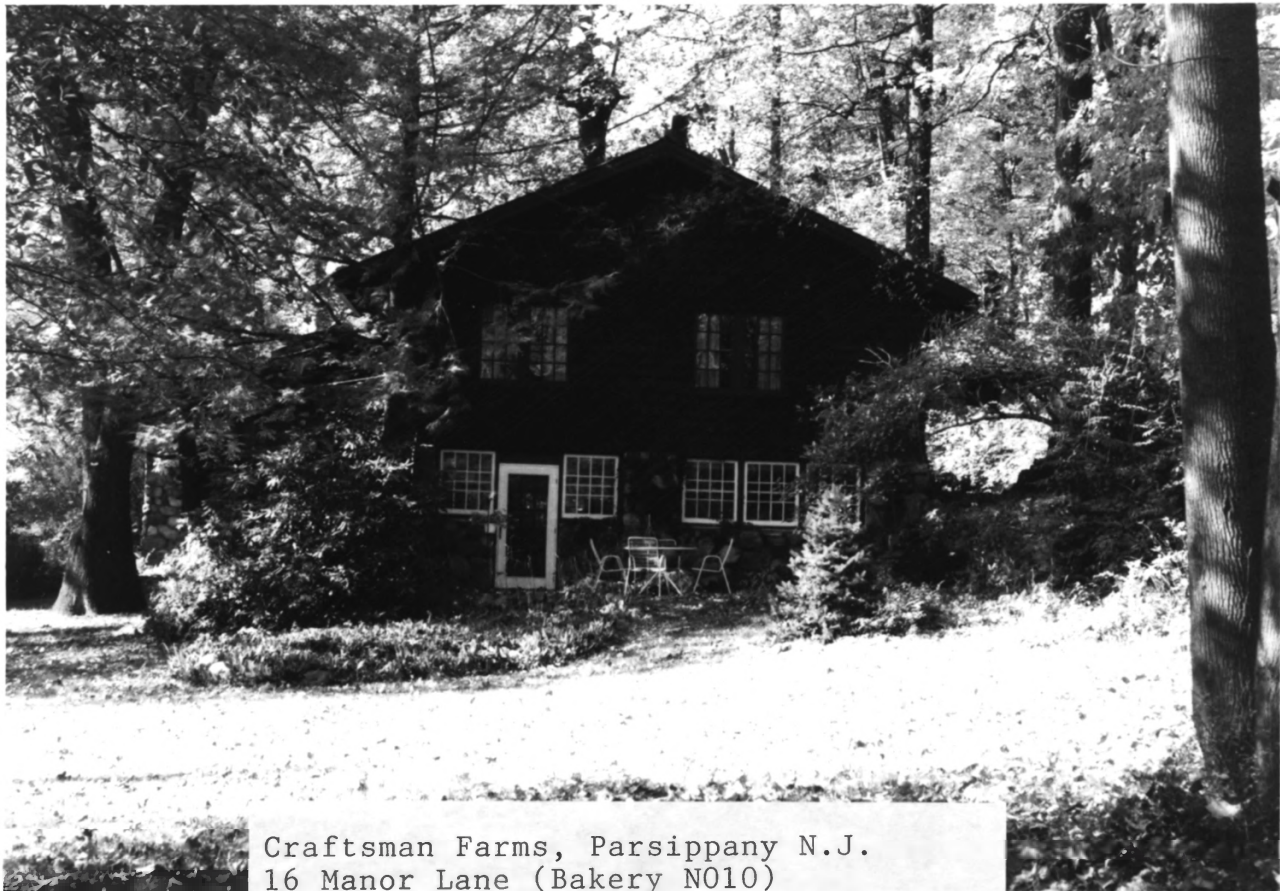
Craftsman Farms, Parsippany, N.J.
Main Log House. Living room
Photo: Don Saunders 1990



Craftsman Farms, Parsippany, N.J.
Main Log House. Living room
Photo: Don Saunders 1990



Craftsman Farms, Parsippany, N.J.
Work Shop #4
Photo: R.B. Benton 1984.




Craftsman Farms, Parsippany N.J.

16 Manor Lane (Bakery N010)

Photo: R.B. Benton 1986



Craftsman Farms, Parsippany, N.J.
16 Manor Lane (Bakery, No.10)
Photo: R.B. Benton 1984



Craftsman Farms, Parsippany, N.J.
Cottages. No 3.

Photo: R.B. Benton 1984



Craftsman Farms, Manor Lane
Parsippany-Troy Hills, Morris-
Co., NJ, R.B. Benton, July 1984
Office of NJ Heritage (CRS 1429)
View N., Neg. File No. 18-29

Main log house, c. 1908 (#1)

#3 of 27



Craftsman Farms, Manor Lane
Parsippany-Troy Hills, Morris-
Co., NJ, R. B. Benton, 1984
Office of NJ Heritage (CRS 1429)
View W., Neg. File No. 19-3

Cottage on hill, c. 1908-12
No. 6 on tax map

#13 of 27



Craftsman Farms, Manor Lane
Parsippany-Troy Hills, Morris-
Co., NJ, R. B. Benton, 1984
Office of NJ Heritage (CRS 1429
View NE., Neg. File No. 19-28

Cow stable ruins, c. 1908-12
No. 13 on tax map

#122 of 27



Craftsman Farms, Manor Lane
Parsippany-Troy Hills, Morris-
Co., NJ, R. B. Benton, 1984
Office of NJ Heritage (CRS 1429)
View N., Neg. File No. 19-22.

Horse stable, c. 1908-12
No. 11 on tax map

20 of 27